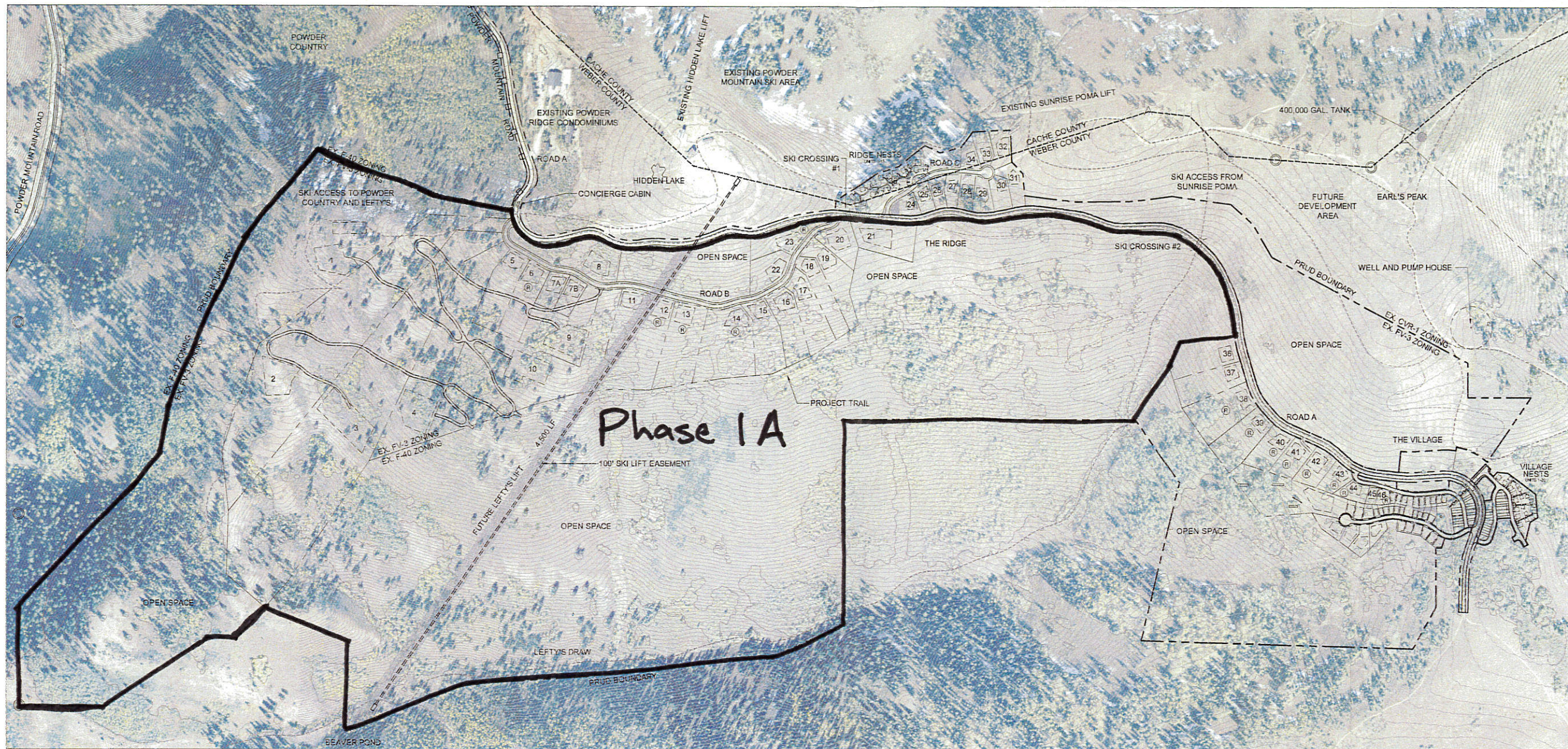
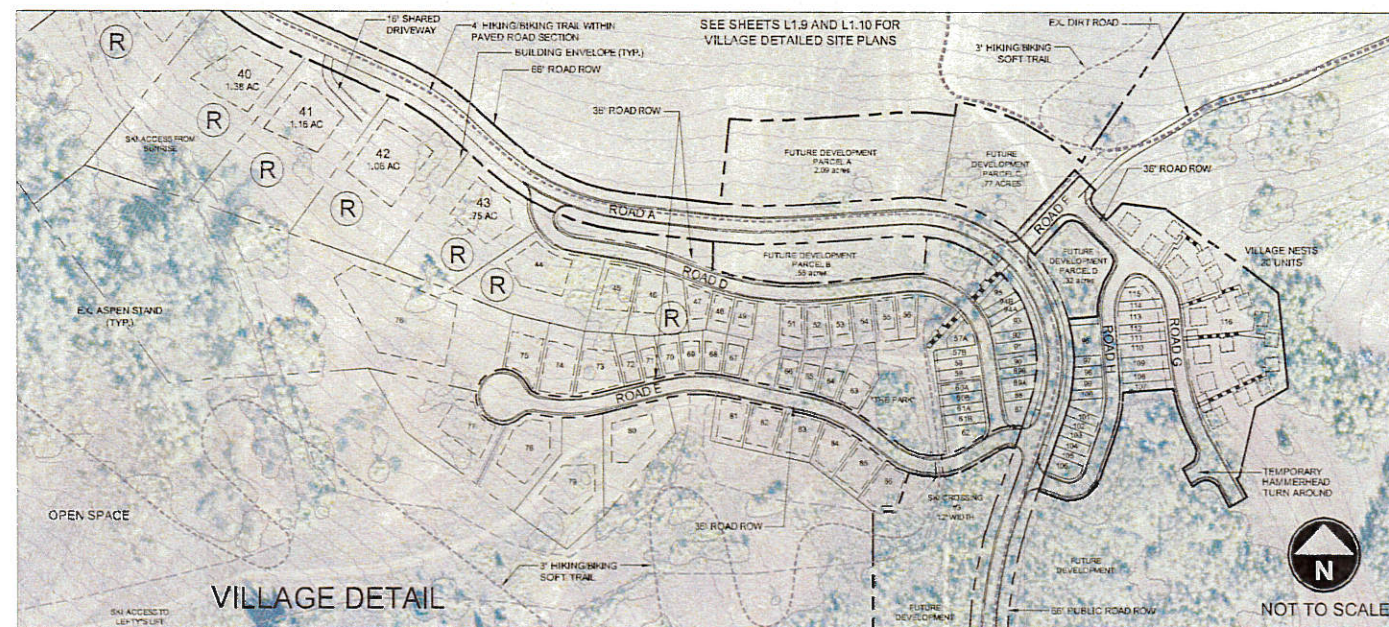


Exhibit B



PRUD DEVELOPMENT DATA

TOTAL PRUD BOUNDARY AREA	594.23 ACRES
ZONE FV-3 AREA	392.04 ACRES
ZONE F-40 AREA	194.83 ACRES
ZONE CVR-1 AREA	2.46 ACRES
CACHE COUNTY AREA	4.90 ACRES
ROAD ROW AREA	18.96 ACRES
SLOPES > 40%	111.85 ACRES
NET DEVELOPABLE AREA	463.42 ACRES
PROPOSED LOTS	116 LOTS
PROPOSED UNITS	154 UNITS
RANCH SINGLE FAMILY	6 UNITS
ESTATE SINGLE FAMILY	26 UNITS
CABIN SINGLE FAMILY	11 UNITS
HILLSIDE SINGLE FAMILY	36 UNITS
VILLAGE SINGLE FAMILY	17 UNITS
VILLAGE LIVE/WORK SF NESTS	23 UNITS
NESTS	35 UNITS
PROPOSED DENSITY	1 UNIT/3.85 ACRES
PROPOSED OPEN SPACE	384.19 ACRES (64.6%)



SUMMIT EDEN PHASE 1 PRUD SUBMITTAL

POWDER MOUNTAIN, WEBER COUNTY, UTAH



DATE:	MAY 24, 2013
PROJECT:	000.0000.00
DRAWN BY:	EL
REVIEW BY:	EL
VERSION:	PRUD
REVISIONS:	
5/24/13 - LOT ADJUSTMENTS - PRUD	
REVISIONS	

SHEET TITLE:
OVERALL SITE PLAN

SHEET NUMBER:
L1.3