

Legend

(Note: All items may not appear on drawing)

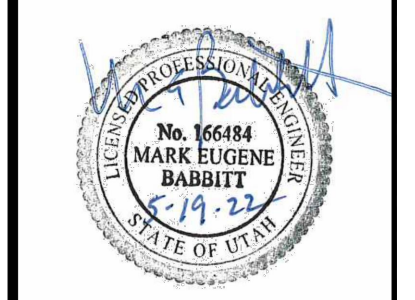
- | | | | |
|------------------------------------------|-------|----------------------------|------------|
| San. Sewer Manhole | ⊙ | Top of Walk | TW |
| Water Manhole | ⊙ | Top of Concrete | TCN |
| Storm Drain Manhole | ⊙ | Natural Ground | NG |
| Clearcut | ⊙ | Finish Grade | FG |
| Electrical Manhole | ⊙ | Match Existing | ME |
| Catch Basins | ⊙ | Finish Contour | FC |
| Exist. Fire Hydrant | ⊙ | Fire Department Connection | FDC |
| Fire Hydrant | ⊙ | Exist. Contour | EC |
| Fire Department Connection | ⊙ | Finish Grade | 90-95.337A |
| Post Indicator Valve | ⊙ | Exist. Contour | 95.124 |
| Exist. Water Valve | ⊙ | Exist. Grade | R |
| Water Valve | ⊙ | Ridge Line | R |
| Sanitary Sewer | —S— | Direction of Flow | → |
| Culinary Water | —W— | Existing Asphalt | ▨ |
| Water Valve | ⊙ | New Asphalt | ▨ |
| Irrigation Line | —I— | Heavy Duty Asphalt | ▨ |
| Storm Drain | —SD— | Existing Concrete | ▨ |
| Telephone Line | —T— | New Concrete | ▨ |
| Secondary Waterline | —SW— | Demo'd Road Base | ▨ |
| Power Line | —P— | Spill Curb & Gutter | ▨ |
| Fire Line | —F— | Demo Tree | ⊙ |
| Land Drain | —LD— | Tree To Remain in Place | ⊙ |
| Power pole w/guy | ⊙ | | |
| Light Pole | ⊙ | | |
| Fence | —X— | | |
| Flowline of ditch | —OHP— | | |
| Overhead Power line | —CMP— | | |
| Corrugated Metal Pipe | —RCP— | | |
| Concrete Pipe | —CP— | | |
| Reinforced Concrete Pipe | —RCP— | | |
| Ductile Iron | —DI— | | |
| Polyvinyl Chloride | —PVC— | | |
| Top of Asphalt | ⊙ | | |
| Edge of Asphalt | ⊙ | | |
| Centerline | ⊙ | | |
| Flowline | ⊙ | | |
| Finish Floor | ⊙ | | |
| Top of Curb | ⊙ | | |
| Top of Wall | ⊙ | | |
| Buildable area | ▨ | | |
| Existing Boundary | ▨ | | |
| Set Hub & Tack | ⊙ | | |
| A will be set Nail in Curb | ⊙ | | |
| ⊙ Extension of Property | ⊙ | | |
| Set 5/8" x 24" Long Rebar & Cap w/ Lathe | ⊙ | | |
| Monument to be set | ⊙ | | |
| Found Centerline Monument | ⊙ | | |
| Radial Line (Rad.) | ⊙ | | |
| Non-Radial Line (N/R) | ⊙ | | |
| Public Utility Easement | ▨ | | |
| Public Utility & Drainage Easement | ▨ | | |

4 Lot Subdivision
Total Area: 4.00 Acres

OWNER
Owner: James & Vicki Berger
Client: Phillip Clawson
HI-C Construction and Design
Office@hiconstructiondesign.com
801-603-2727

ENGINEER
Mark Babbitt, PE/PLS
Great Basin Engineering
5746 South 1475 East
South Ogden, UT 84403
801-394-1545
MarkB@GreatBasinENG.com

REV	DATE	DESCRIPTION

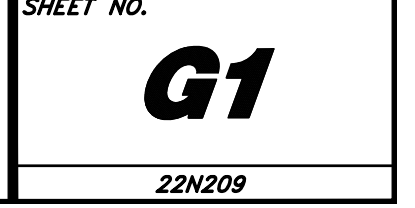


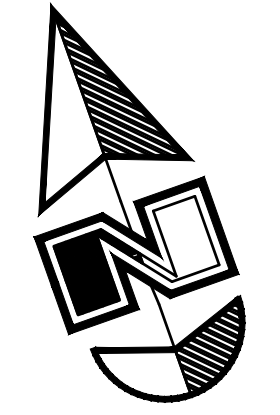
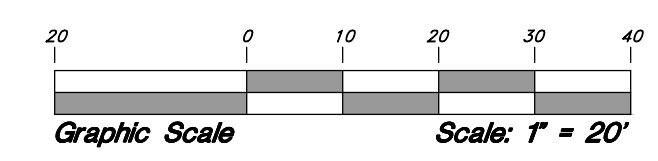
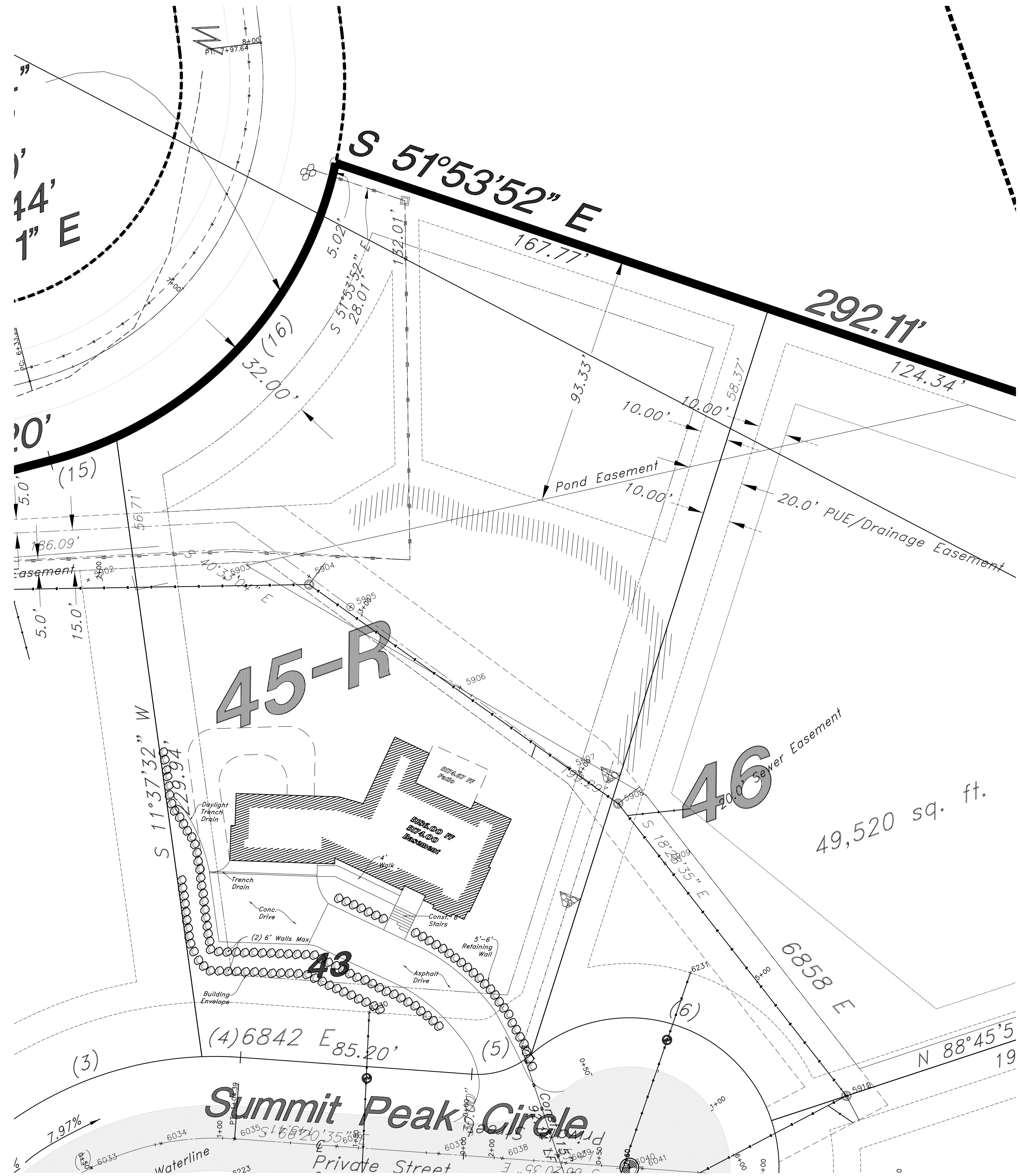
GREAT BASIN ENGINEERING

5746 SOUTH 1475 EAST, S. OGDEN, UTAH 84403
WWW.GREATBASINENGINEERING.COM

Grading & Drainage Plan
HI-C Construction Lot# 45R
Summit at Ski Lake #2
8842 East Summit Peak Circle
Huntsville, Utah 84317
A part of Northeast Quarter Section 24, T6N, R1E, S18&M, U.S. Survey

May 19, 2022





Legend

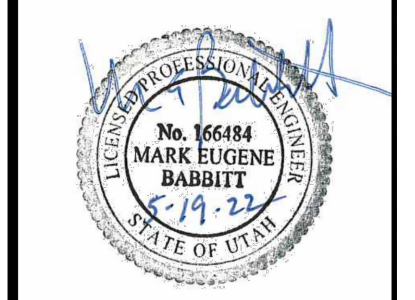
(Note: All items may not appear on drawing)

San. Sewer Manhole	⊙	Top of Walk	TW
Water Manhole	⊙	Top of Concrete	TCN
Storm Drain Manhole	⊙	Natural Ground	NG
Cleanout	⊙	Finish Grade	FG
Electrical Manhole	⊙	Match Existing	ME
Catch Basins	⊙	Fire Department Connection	FDC
Exist. Fire Hydrant	⊙	Finish Contour	90-
Fire Hydrant	⊙	Exist. Contour	90-
Fire Department Connection	⊙	Finish Grade	95.3374
Post Indicator Valve	⊙	Exist. Grade	95.724
Exist. Water Valve	⊙	Ridge Line	R
Water Valve	⊙	Direction of Flow	→
Sanitary Sewer	—S—	Existing Asphalt	▨
Culinary Water	—W—	New Asphalt	▨
Gas Line	—G—	Heavy Duty Asphalt	▨
Irrigation Line	—IW—	Existing Concrete	▨
Storm Drain	—SD—	New Concrete	▨
Telephone Line	—T—	Demo'd Road Base	▨
Secondary Waterline	—SW—	Spill Curb & Gutter	▨
Power Line	—P—	Demo Tree	⊙
Fire Line	—F—	Tree To Remain in Place	⊙
Land Drain	—LD—		
Power pole w/guy	⊙		
Light Pole	⊙		
Fence	—X—		
Flowline of ditch	—OHP—		
Overhead Power line	—CMP—		
Corrugated Metal Pipe	—RCP—		
Concrete Pipe	—CP—		
Reinforced Concrete Pipe	—RCP—		
Ductile Iron	—DI—		
Polyvinyl Chloride	—PVC—		
Top of Asphalt	—TA—		
Edge of Asphalt	—EA—		
Centerline	—CL—		
Flowline	—FL—		
Finish Floor	—FT—		
Top of Curb	—TC—		
Top of Wall	—TWL—		
Buildable area	▨		
Existing Boundary	—		
Set Hub & Tack	⊙		
A will be set Nail in Curb	⊙		
⊙ Extension of Property	⊙		
Set 5/8" x 24" Long Rebar & Cap w/ Lathe	⊙		
Monument to be set	⊙		
Found Centerline Monument	⊙		
Radial Line (Rad.)	⊙		
Non-Radial Line (N/R)	⊙		
Public Utility Easement	▨		
Public Utility & Drainage Easement	▨		

OWNER
 Owner: James & Vicki Berger
 Client: Phillip Clawson
 HI-C Construction and Design
 Office@hiconstructiondesign.com
 801-603-2727

ENGINEER
 Mark Babbitt, PE/PLS
 Great Basin Engineering
 5746 South 1475 East
 South Ogden, UT 84403
 801-394-1545
 MarkB@GreatBasinENG.com

REV	DATE	DESCRIPTION



GREAT BASIN ENGINEERING
 5746 SOUTH 1475 EAST, SODEN, UTAH 84403
 WWW.GREATBASINENGINEERING.COM

Site Plan
HI-C Construction Lot# 45R
Summit at Ski Lake #2
 8842 East Summit Peak Circle
 Huntsville, Utah 84317
 A part of Northeast Quarter Section 24, T6N, R1E, S18&M, U.S. Survey

May 19, 2022

SHEET NO.
S1