

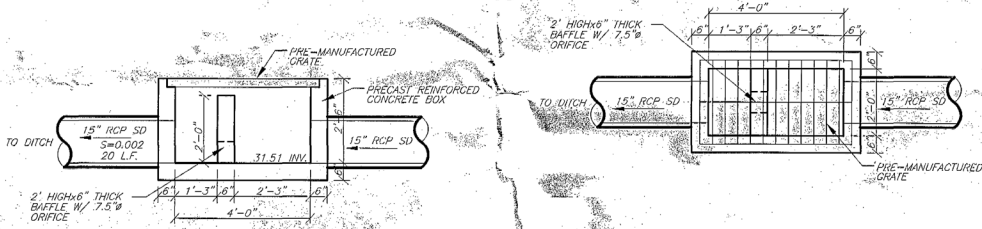
- Legend**
- SW — = PROPOSED SECONDARY WATER LINE
 - EX-SW — = EXISTING SECONDARY WATER LINE
 - SS — = PROPOSED SANITARY SEWER LINE
 - EX-SS — = EXISTING SANITARY SEWER LINE
 - W — = PROPOSED CULINARY WATER LINE
 - EX-W — = EXISTING CULINARY WATER LINE
 - SD — = PROPOSED STORM DRAIN
 - EX-SD — = EXISTING STORM DRAIN
 - = PROPOSED FIRE HYDRANT
 - = PROPOSED MANHOLE
 - = PROPOSED GATE VALVE
 - = PLUG W/ 2" BLOW-OFF
 - = PROPOSED SINGLE GRATE CATCH BASIN WITH BICYCLE-SAFE GRATE
 - = PROPOSED REDUCERS
 - = PLUG & BLOCK
 - = AIR-VAC ASSEMBLY
 - = PROPOSED STREET LIGHT
 - = EXISTING WATER METER

This is the storm drain outlet to this development

NOTE: ALL CONSTRUCTION IS TO CONFORM TO THE STANDARD DRAWINGS & SPECIFICATIONS OF WEBER COUNTY.

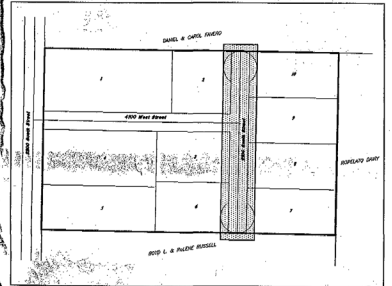
2100 South Street

SCALES: HORIZ. 1"=20'
VERT. 1"=2'

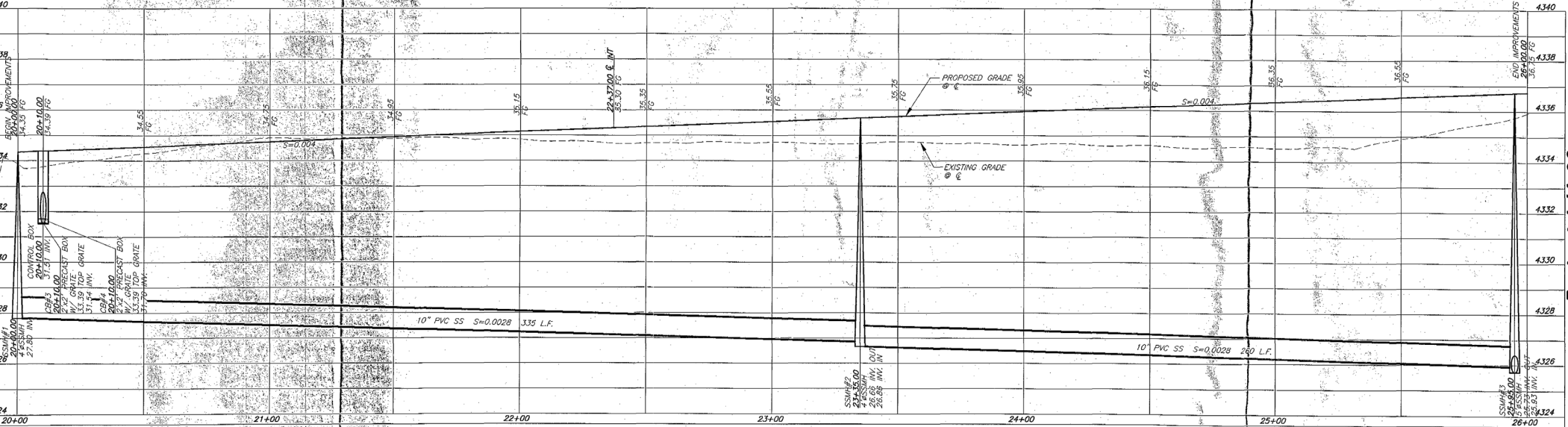


Section Detention Basin Control Box
SCALE: 1"=2'

Plan



Key Map
SCALE: NONE



Revised 1-14-03