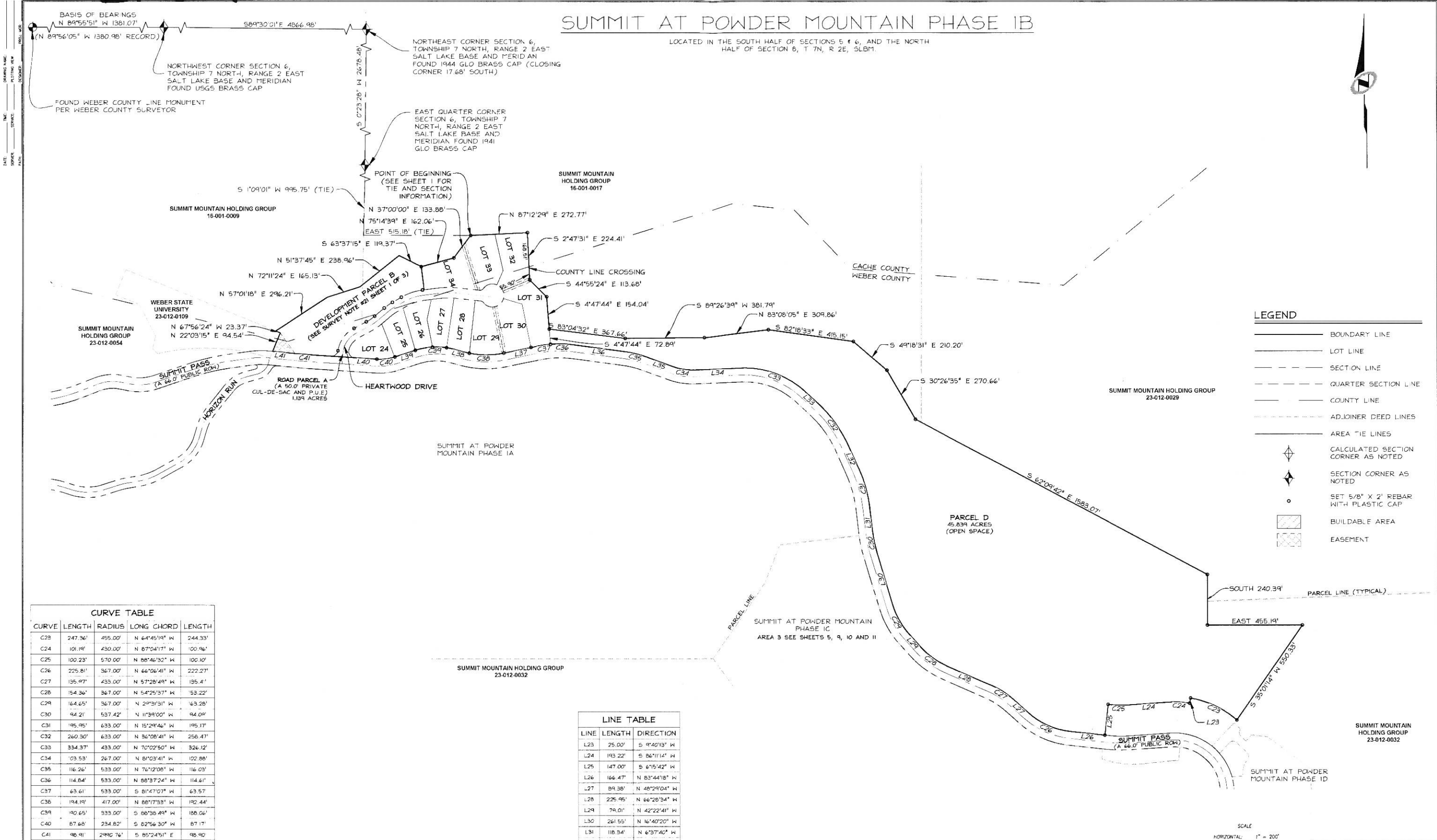


Exhibit A

SUMMIT AT POWDER MOUNTAIN PHASE 1B

LOCATED IN THE SOUTH HALF OF SECTIONS 5 & 6, AND THE NORTH HALF OF SECTION 8, T 7N, R 2E, S16M.



LEGEND

- BOUNDARY LINE
- LOT LINE
- - - SECTION LINE
- - - QUARTER SECTION LINE
- - - COUNTY LINE
- - - ADJOINER DEED LINES
- - - AREA TIE LINES
- ◆ CALCULATED SECTION CORNER AS NOTED
- ◆ SECTION CORNER AS NOTED
- SET 5/8" X 2" REBAR WITH PLASTIC CAP
- ▨ BUILDABLE AREA
- ▩ EASEMENT

CURVE TABLE

CURVE	LENGTH	RADIUS	LONG CHORD	LENGTH
C23	247.36'	455.00'	N 64°45'19" W	244.33'
C24	101.19'	430.00'	N 87°04'17" W	100.96'
C25	100.23'	570.00'	N 88°46'32" W	100.40'
C26	225.81'	367.00'	N 66°06'41" W	222.27'
C27	135.97'	433.00'	N 57°28'49" W	135.41'
C28	154.36'	367.00'	N 54°25'37" W	153.22'
C29	164.65'	367.00'	N 29°31'31" W	163.28'
C30	94.21'	537.42'	N 11°39'00" W	94.09'
C31	195.95'	633.00'	N 15°29'46" W	195.17'
C32	260.30'	633.00'	N 36°08'41" W	258.47'
C33	334.37'	433.00'	N 70°02'50" W	326.12'
C34	103.53'	267.00'	N 81°03'41" W	102.88'
C35	116.26'	533.00'	N 76°12'08" W	116.03'
C36	114.84'	533.00'	N 88°37'24" W	114.61'
C37	63.61'	533.00'	S 81°47'07" W	63.57'
C38	194.19'	417.00'	N 88°17'33" W	192.44'
C39	190.65'	333.00'	S 88°35'49" W	188.06'
C40	87.68'	234.82'	S 82°56'30" W	87.17'
C41	98.91'	2990.76'	S 85°24'51" E	98.90'

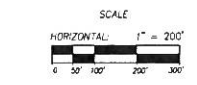
LINE TABLE

LINE	LENGTH	DIRECTION
L23	25.00'	S 9°40'13" W
L24	193.22'	S 86°11'14" W
L25	147.00'	S 61°15'42" W
L26	166.47'	N 83°44'18" W
L27	89.38'	N 48°29'04" W
L28	225.95'	N 66°28'34" W
L29	79.01'	N 42°22'41" W
L30	261.55'	N 16°40'20" W
L31	118.34'	N 6°37'40" W
L32	113.52'	N 24°21'51" W
L33	81.02'	N 47°55'31" W
L34	231.14'	S 87°49'50" W
L35	126.40'	N 69°57'12" W
L36	241.01'	N 82°27'04" W
L37	163.17'	N 78°21'54" E
L38	46.14'	N 74°57'04" W
L39	103.92'	S 72°14'41" W
L40	297.63'	N 86°21'42" W
L41	105.46'	S 84°28'01" E

**SUMMIT AT POWDER MOUNTAIN PHASE 1D
AREA 2 BOUNDARY & PARCEL D**

LOCATED IN SECTION 8 OF
TOWNSHIP 7 NORTH, RANGE 2 EAST, SALT LAKE
BASE AND MERIDIAN, WEBER COUNTY, UTAH

NO.	BY	DATE	REVISIONS
1	TD	2013-09-17	PLAT NOTES & LEGAL DESCRIPTIONS



RECORDED #

STATE OF UTAH, COUNTY OF WEBER,
RECORDED AND FILED AT THE
REQUEST OF:

ENTRY NO. _____
DATE: _____ TIME: _____
BOOK: _____ PAGE: _____
FEE \$ _____

WEBER COUNTY RECORDER

Sheet 2 of 3

NV5
NOLTE VERTICAL FIVE

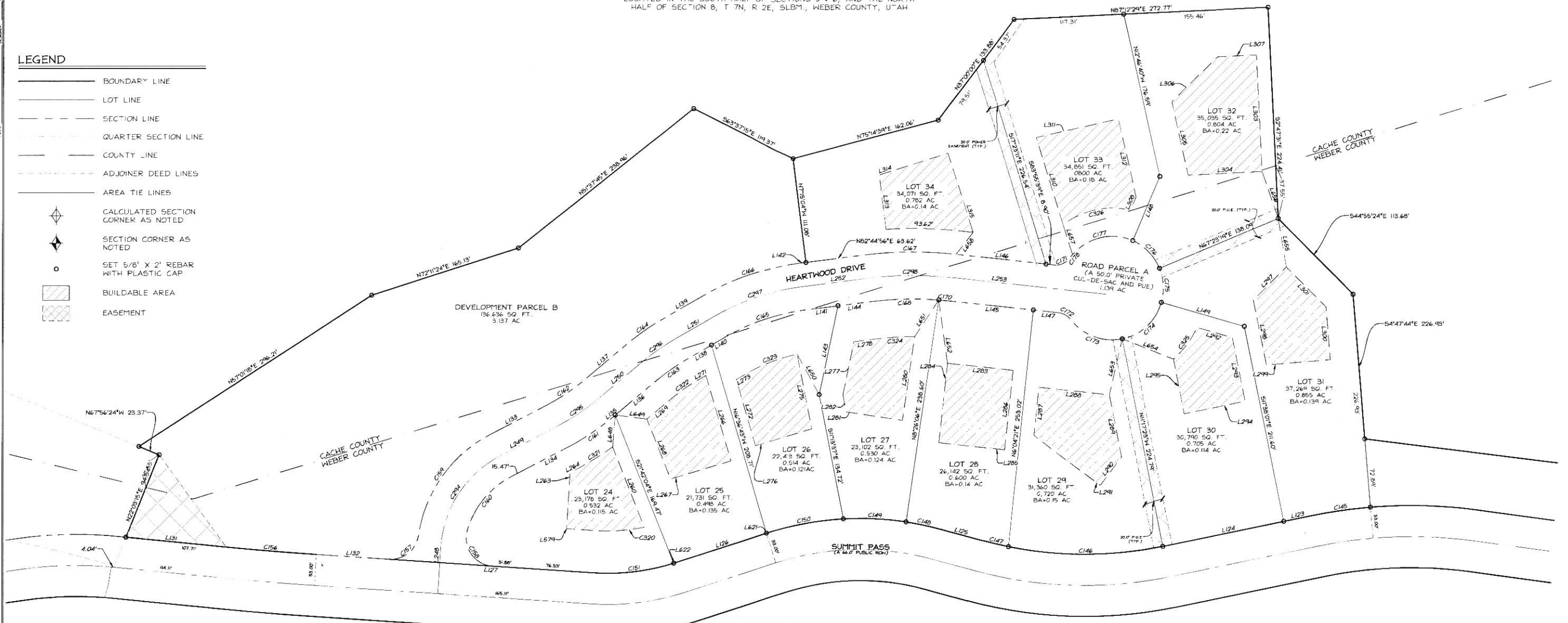
5217 SOUTH STATE STREET, SUITE 320 MURRAY, UT 84107
801.743.1300 TEL. 801.743.0200 FAX. WWW.NOLTE.COM

SUMMIT AT POWDER MOUNTAIN PHASE 1B

LOCATED IN THE SOUTH HALF OF SECTIONS 5 & 6, AND THE NORTH HALF OF SECTION 8, T 7N, R 2E, S16M, WEBER COUNTY, UTAH

LEGEND

- BOUNDARY LINE
- LOT LINE
- SECTION LINE
- QUARTER SECTION LINE
- COUNTY LINE
- ADJOINER DEED LINES
- AREA TIE LINES
- CALCULATED SECTION CORNER AS NOTED
- SECTION CORNER AS NOTED
-
- BUILDABLE AREA
- EASEMENT



CURVE	LENGTH	RADIUS	LONG CHORD	LENGTH
C145	63.61'	533.00'	S 81°47'07" W	63.57'
C146	166.44'	417.00'	N 89°48'02" E	165.33'
C147	27.76'	417.00'	S 76°51'29" E	27.75'
C148	38.44'	333.00'	N 78°15'29" W	38.42'
C149	67.91'	333.00'	N 87°24'27" W	67.80'
C150	84.30'	333.00'	S 79°29'51" W	84.08'
C151	87.68'	234.82'	N 82°56'30" E	87.71'
C156	98.91'	2990.76'	S 85°24'51" E	98.90'
C157	44.59'	30.00'	N 5°03'40" E	40.60'
C158	54.01'	30.00'	S 34°47'21" E	47.00'
C159	136.58'	145.00'	S 35°28'08" W	131.59'
C160	75.72'	95.00'	S 39°13'07" W	73.74'
C161	59.02'	275.00'	N 56°18'22" E	58.90'
C162	48.29'	225.00'	N 56°18'22" E	48.00'
C163	39.27'	225.00'	S 55°09'31" W	39.22'
C164	48.00'	275.00'	S 55°09'31" W	47.94'
C165	88.71'	225.00'	S 71°27'14" W	88.41'
C166	108.42'	275.00'	S 71°27'14" W	107.72'
C167	98.83'	425.00'	S 89°24'38" W	98.61'
C168	74.35'	375.00'	S 88°25'44" W	74.23'

CURVE	LENGTH	RADIUS	LONG CHORD	LENGTH
C170	12.85'	375.00'	N 84°54'34" W	12.85'
C171	19.01'	18.00'	N 65°48'35" E	18.14'
C172	14.67'	18.00'	N 60°35'11" W	14.26'
C173	61.48'	55.00'	S 69°16'03" E	58.33'
C174	60.31'	55.00'	N 47°17'43" E	57.34'
C175	36.95'	55.00'	N 3°21'56" W	36.26'
C176	42.31'	55.00'	N 44°39'02" W	41.28'
C177	70.00'	55.00'	S 76°50'57" W	65.37'
C178	4.65'	55.00'	S 37°58'04" W	4.65'
C204	123.18'	120.00'	S 33°02'46" W	117.85'
C205	53.65'	250.00'	N 56°18'22" E	53.55'
C206	43.64'	250.00'	S 55°09'31" W	43.58'
C207	98.57'	250.00'	S 7°27'14" W	97.93'
C208	93.02'	400.00'	S 89°24'38" W	92.81'
C320	51.59'	189.82'	S 85°51'07" W	51.43'
C321	43.32'	300.00'	N 58°19'02" E	43.28'
C322	34.91'	200.00'	N 55°09'31" E	34.87'
C323	57.90'	180.00'	N 69°22'26" E	57.65'
C324	43.26'	335.00'	N 86°26'53" E	43.23'
C325	42.24'	100.00'	N 36°36'31" E	41.93'

CURVE	LENGTH	RADIUS	LONG CHORD	LENGTH
C326	75.24'	85.00'	S 77°47'15" W	72.81'

LINE	LENGTH	DIRECTION
L148	74.13'	N 23°18'36" E
L149	92.59'	S 74°07'11" E
L248	15.22'	N 3°38'18" E
L249	67.41'	N 62°27'14" E
L250	60.24'	N 50°09'29" E
L251	49.03'	N 60°09'33" E
L252	71.93'	N 82°44'56" E
L253	64.14'	S 82°55'39" E
L260	91.90'	S 21°42'04" E
L263	59.86'	N 3°38'18" E
L264	9.94'	N 62°27'14" E
L266	94.83'	S 16°36'43" E
L267	67.61'	S 73°23'17" W
L268	68.55'	N 21°42'04" E
L269	34.17'	N 50°09'29" E
L271	9.43'	N 60°09'33" E
L273	13.49'	N 60°09'33" E
L275	80.87'	S 11°13'37" E
L276	63.05'	S 73°23'17" W
L277	57.70'	N 12°00'14" E

LINE	LENGTH	DIRECTION
L123	30.58'	N 78°21'59" E
L124	132.59'	N 78°21'59" E
L125	46.14'	S 74°57'04" E
L127	219.49'	S 86°21'42" E
L131	114.11'	S 64°28'01" E
L132	78.15'	S 86°21'42" E
L133	67.41'	N 62°27'14" E
L134	67.41'	S 62°27'14" W
L136	57.55'	S 50°09'29" W
L137	60.24'	N 50°09'29" E
L138	30.71'	S 60°09'33" E
L139	49.03'	N 60°09'33" E
L140	18.32'	S 60°09'33" W
L141	36.96'	S 82°44'56" E
L142	8.31'	N 82°44'56" E
L143	96.47'	N 12°00'14" E
L144	34.97'	S 82°44'56" E
L145	88.66'	N 83°55'39" W
L146	97.08'	S 83°55'39" E
L147	27.76'	N 83°55'39" W

LINE	LENGTH	DIRECTION
L278	22.46'	N 82°44'56" E
L280	90.02'	S 82°06" W
L281	61.29'	N 81°33'54" W
L282	18.46'	N 11°13'37" W
L283	70.00'	N 83°55'39" W
L284	85.00'	S 6°04'21" W
L285	70.00'	S 83°55'39" E
L286	85.00'	N 6°04'21" E
L287	51.44'	N 6°04'21" E
L288	74.99'	S 83°55'39" E
L289	67.32'	S 11°13'37" E
L290	37.86'	S 36°59'11" W
L291	88.15'	N 53°00'49" W
L292	39.62'	S 74°07'11" E
L293	68.96'	S 11°13'37" E
L295	59.34'	N 11°13'37" W
L297	50.15'	S 45°04'36" W
L298	70.44'	S 11°13'37" W
L299	68.76'	N 85°12'16" E
L300	56.22'	N 4°47'44" W

LINE	LENGTH	DIRECTION
L301	60.21'	N 44°55'24" W
L303	123.92'	S 2°47'31" E
L304	79.38'	S 87°2'29" W
L305	80.00'	N 12°46'40" W
L306	68.29'	N 45°50'30" E
L307	42.00'	N 87°12'29" E
L308	15.11'	S 23°18'36" W
L310	96.87'	N 17°23'11" W
L311	84.49'	N 77°13'20" E
L312	85.06'	S 12°46'40" E
L313	58.07'	N 7°15'04" W
L314	78.00'	N 72°36'49" E
L315	88.05'	S 17°23'11" E
L579	32.19'	N 86°21'42" W
L618	15.56'	N 9°04'09" E
L621	0.06'	S 72°18'00" W
L622	1.04'	S 72°22'20" W
L653	60.89'	S 12°57'09" W
L654	59.15'	S 68°59'41" E
L655	52.03'	S 9°42'51" E

LINE	LENGTH	DIRECTION
L656	52.67'	N 19°20'13" W
L657	33.25'	N 17°23'11" W
L658	29.35'	N 37°39'48" E

SUMMIT AT POWDER MOUNTAIN PHASE 1D
LOTS 15 TO 34

LOCATED IN SECTION 8 OF TOWNSHIP 7 NORTH, RANGE 2 EAST, SALT LAKE BASE AND MERIDIAN, WEBER COUNTY, UTAH

NO.	BY	DATE	REVISIONS
1	T.D.	2013-09-17	PLAT NOTES & LEGAL DESCRIPTIONS

SUMMIT AT POWDER MOUNTAIN PHASE 1A



SCALE
 HORIZONTAL: 1" = 50'
 VERTICAL: 1" = 25'

RECORDED #

STATE OF UTAH, COUNTY OF WEBER, RECORDED AND FILED AT THE REQUEST OF:

ENTRY NO. _____

DATE: _____ TIME: _____

BOOK: _____ PAGE: _____

FEE \$ _____

WEBER COUNTY RECORDER

Sheet 3 of 3

NV5
 NOTLE VERTICAL FIVE

5217 SOUTH STATE STREET, SUITE 300, KIRBY, UT 84137
 REG. 743.1300 TEL. 801.743.6300 FAX. WWW.NVFC.COM