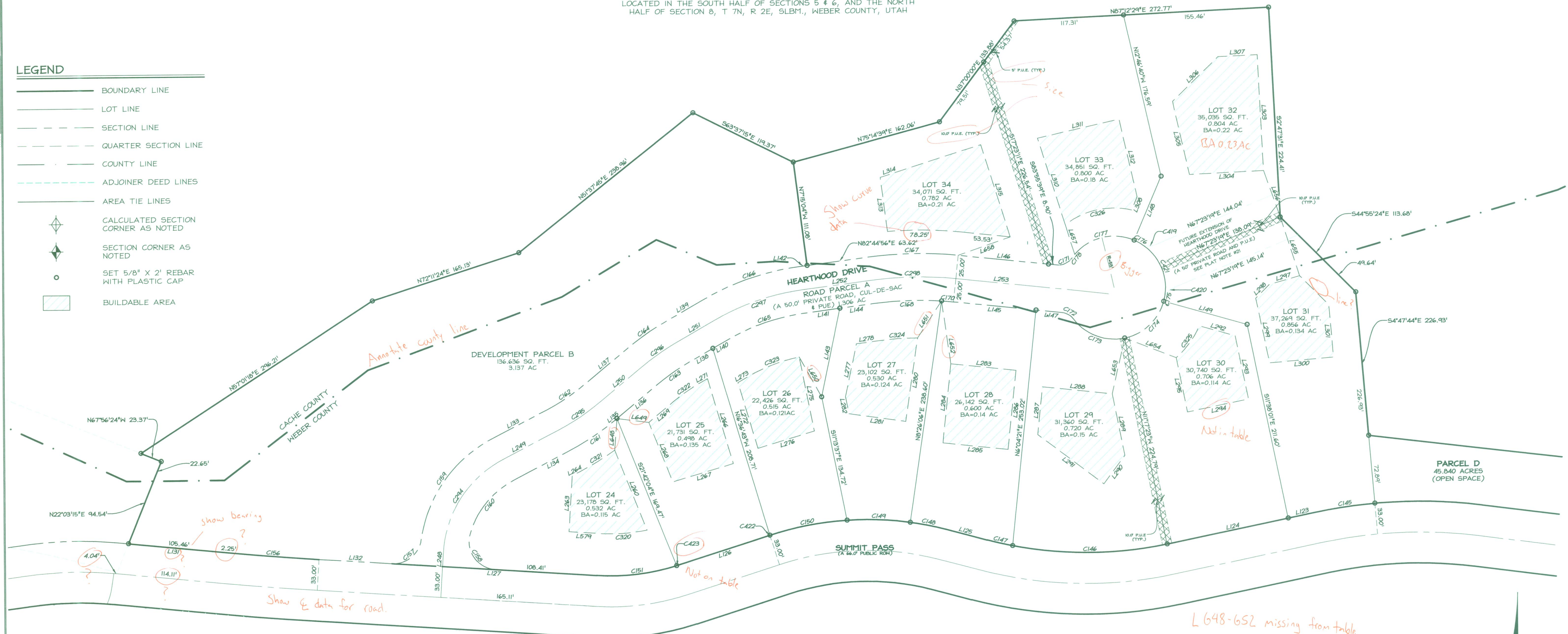


SUMMIT AT POWDER MOUNTAIN PHASE 1B

LOCATED IN THE SOUTH HALF OF SECTIONS 5 & 6, AND THE NORTH HALF OF SECTION 8, T 7N, R 2E, SLB1M., WEBER COUNTY, UTAH

LEGEND	
	BOUNDARY LINE
	LOT LINE
	SECTION LINE
	QUARTER SECTION LINE
	COUNTY LINE
	ADJOINER DEED LINES
	AREA TIE LINES
	CALCULATED SECTION CORNER AS NOTED
	SECTION CORNER AS NOTED
	SET 5/8" X 2' REBAR WITH PLASTIC CAP
	BUILDABLE AREA



CURVE TABLE				
CURVE	LENGTH	RADIUS	DELTA	LONG CHORD
C145	63.61'	533.00'	6°50'17"	63.57'
C146	166.44'	417.00'	22°52'06"	165.33'
C147	27.76'	417.00'	3°48'50"	27.75'
C148	38.44'	333.00'	6°36'50"	38.42'
C149	67.91'	333.00'	11°41'06"	67.80'
C150	84.30'	333.00'	14°30'16"	84.08'
C151	87.68'	234.82'	21°23'37"	87.17'
C156	98.91'	2990.76'	1°53'41"	98.90'
C157	44.59'	30.00'	85°09'16"	40.60'
C158	54.01'	30.00'	103°08'42"	47.00'
C159	136.58'	145.00'	53°58'12"	131.59'
C160	75.72'	95.00'	45°40'14"	73.74'
C161	59.02'	275.00'	12°17'45"	58.90'
C162	48.29'	225.00'	12°17'45"	48.19'
C163	39.27'	225.00'	10°00'04"	39.22'
C164	48.00'	275.00'	10°00'04"	47.94'
C165	88.71'	225.00'	22°35'23"	88.14'
C166	108.42'	275.00'	22°35'23"	107.72'
C167	98.83'	425.00'	13°19'25"	98.61'
C168	74.35'	375.00'	11°21'36"	74.23'

CURVE TABLE				
CURVE	LENGTH	RADIUS	DELTA	LONG CHORD
C170	12.85'	375.00'	1°57'48"	12.85'
C171	19.01'	18.00'	60°31'31"	18.14'
C172	14.67'	18.00'	46°40'57"	14.26'
C173	61.48'	55.00'	6°40'24"	58.33'
C174	66.38'	55.00'	6°40'24"	62.42'
C175	6.07'	55.00'	6°19'13"	6.06'
C176	11.74'	55.00'	12°13'40"	11.72'
C177	70.00'	55.00'	72°55'19"	65.37'
C178	4.65'	55.00'	4°50'27"	4.65'
C244	123.18'	120.00'	58°48'56"	117.85'
C245	53.65'	250.00'	12°17'45"	53.55'
C246	43.64'	250.00'	10°00'04"	43.58'
C247	98.57'	250.00'	22°35'23"	97.93'
C248	93.02'	400.00'	13°19'25"	92.81'
C320	51.59'	189.82'	15°34'22"	51.43'
C321	43.32'	300.00'	8°16'24"	43.28'
C322	34.91'	200.00'	10°00'04"	34.87'
C323	57.90'	180.00'	18°25'45"	57.65'
C324	43.26'	335.00'	7°23'55"	43.23'
C325	42.24'	100.00'	24°12'11"	41.93'

CURVE TABLE				
CURVE	LENGTH	RADIUS	DELTA	LONG CHORD
C326	75.24'	85.00'	50°43'01"	72.81'
C419	12.27'	18.00'	39°03'49"	12.04'
C420	12.68'	18.00'	40°21'51"	12.42'
C421	61.46'	55.00'	6°40'12"	58.31'
C422	0.06'	333.00'	0°00'37"	0.06'

423 | 1.04 | 234.82 | 0°15'16" | 372°22'20" | 1.04'

Curve 30 from leg 1?

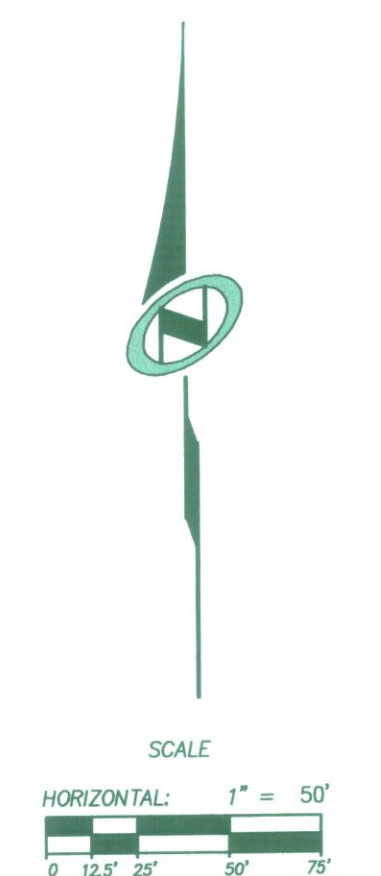
LINE TABLE		
LINE	LENGTH	DIRECTION
L146	97.08'	S 83°55'39" E
L147	27.76'	N 83°55'39" W
L148	74.13'	N 23°18'36" E
L149	92.59'	S 74°07'11" E
L248	15.22'	N 3°38'18" E
L131	114.11'	S 84°28'01" E
L250	60.24'	N 50°09'29" E
L251	49.03'	N 60°09'33" E
L252	71.93'	N 82°44'56" E
L253	164.14'	S 83°55'39" E
L260	91.90'	S 21°42'04" E
L263	59.86'	N 3°38'18" E
L264	9.94'	N 62°27'14" E
L266	94.83'	S 16°36'43" E
L267	67.61'	S 73°23'17" W
L268	68.55'	N 21°42'04" W
L269	34.17'	N 50°09'29" E
L271	9.43'	N 60°09'33" E
L273	13.49'	N 60°09'33" E
L275	80.87'	S 11°13'37" E

LINE TABLE		
LINE	LENGTH	DIRECTION
L123	30.58'	N 78°21'59" E
L124	132.59'	N 78°21'59" E
L125	46.14'	S 74°57'04" E
L126	103.92'	N 72°14'41" E
L127	219.49'	S 86°21'42" E
L131	114.11'	S 84°28'01" E
L132	78.15'	S 86°21'42" E
L133	67.41'	N 62°27'14" W
L134	67.41'	S 62°27'14" W
L135	2.69'	S 50°09'29" W
L136	57.55'	S 50°09'29" W
L137	60.24'	N 50°09'29" E
L138	30.71'	S 60°09'33" W
L139	49.03'	N 60°09'33" E
L140	18.32'	S 60°09'33" E
L141	36.96'	S 82°44'56" E
L142	8.31'	N 82°44'56" E
L143	96.47'	N 12°00'14" E
L144	34.97'	S 82°44'56" E
L145	88.66'	N 83°55'39" W

LINE TABLE		
LINE	LENGTH	DIRECTION
L276	63.05'	S 73°23'17" W
L277	57.70'	N 12°00'14" E
L278	22.46'	N 82°44'56" E
L280	90.02'	S 8°26'06" W
L281	61.29'	N 81°33'54" W
L282	18.46'	N 11°13'37" W
L283	70.00'	N 83°55'39" W
L284	85.00'	S 6°04'21" W
L285	70.00'	S 83°55'39" E
L286	85.00'	N 6°04'21" E
L287	51.44'	N 6°04'21" E
L288	74.99'	S 83°55'39" E
L289	67.32'	S 11°17'23" E
L290	37.86'	S 36°59'11" W
L291	88.15'	N 53°00'49" W
L292	39.62'	S 74°07'11" E
L293	68.96'	S 11°30'01" E
L295	59.34'	N 11°17'23" W
L297	33.72'	S 74°03'46" W
L298	20.65'	S 45°04'36" E

LINE TABLE		
LINE	LENGTH	DIRECTION
L299	70.44'	S 11°38'01" E
L300	68.76'	N 85°12'16" E
L301	56.22'	N 4°47'44" W
L303	123.92'	S 2°47'31" E
L304	79.38'	S 87°12'29" W
L305	80.00'	N 12°46'40" W
L306	68.29'	N 45°50'30" E
L307	42.00'	N 87°12'29" E
L308	15.11'	S 23°18'36" W
L310	96.87'	N 17°23'11" W
L311	89.49'	N 77°13'20" E
L312	85.06'	S 12°46'40" E
L313	58.07'	N 7°15'04" W
L314	113.00'	N 72°36'49" E
L315	103.24'	S 17°23'11" E
L318	58.07'	N 86°21'42" W
L579	32.19'	N 86°21'42" W
L618	15.56'	N 9°04'09" E
L653	60.89'	S 12°57'09" W
L654	59.15'	S 68°59'41" E
L655	66.06'	S 17°54'49" E

LINE TABLE		
LINE	LENGTH	DIRECTION
L656	52.67'	N 19°20'13" W
L657	33.25'	N 17°23'11" W
L658	59.08'	N 71°02'16" E



SUMMIT AT POWDER MOUNTAIN PHASE 1B
LOTS 24 TO 34

LOCATED IN SECTION 5, 6 AND 8 OF TOWNSHIP 7 NORTH, RANGE 2 EAST, SALT LAKE BASE AND MERIDIAN, WEBER COUNTY, UTAH

NO.	BY	DATE	REVISIONS:
2	TD	2013-10-29	COUNTY REDLINES
1	TD	2013-09-17	PLAT NOTES & LEGAL DESCRIPTIONS

Sheet **3** of 3

RECORDED #

STATE OF UTAH, COUNTY OF WEBER, RECORDED AND FILED AT THE

REQUEST OF: _____

ENTRY NO: _____

DATE: _____ TIME: _____

BOOK: _____ PAGE: _____

FEE \$ _____

NV5
NOLTE VERTICALFIVE

5217 SOUTH STATE STREET, SUITE 300 MURRAY, UT 84107
801.743.1300 TEL. 801.743.0300 FAX WWW.NOLTE.COM

WEBER COUNTY RECORDER