

SW 1/4

46

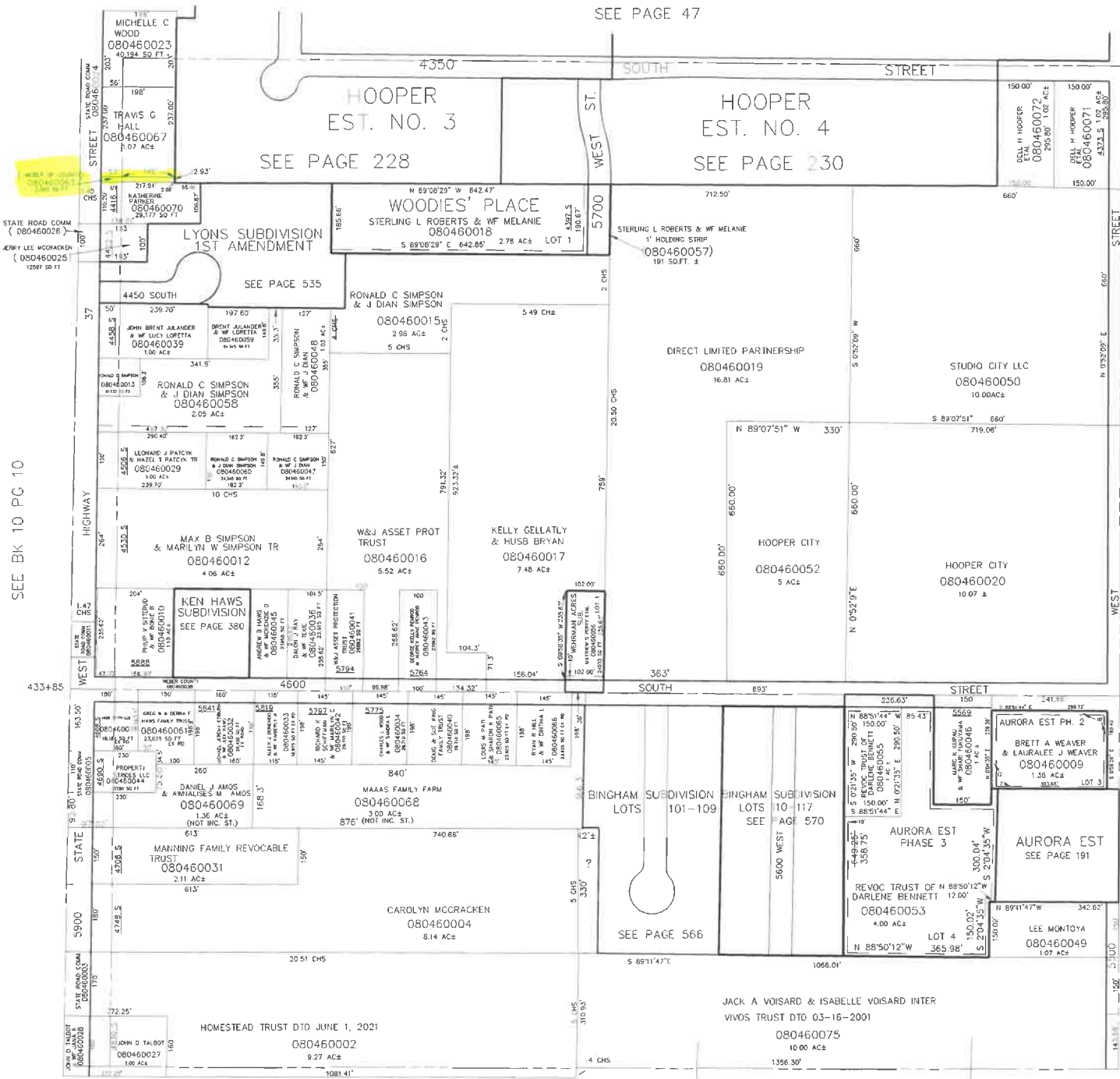
SECTION 7, T5N, R2W, S.L.B. & M.

IN HOOPER CITY

SCALE 1"=200'

TAXING UNIT: 376

SEE PAGE 47



SEE BK 10 PG 10

SEE PAGE 45

SEE BK 9 PG 77

FOR TAX PURPOSES ONLY

8

S.H.L. 6-87