

SUMMIT AT POWDER MOUNTAIN PHASE ID

LOCATED IN THE NORTH HALF OF SECTION 8, T 7N, R 2E, 51B1M., WEBER COUNTY, UTAH.

BASIS OF BEARINGS
 N 89°55'5" W 1381.07'
 (N 89°56'05" W 1380.98' RECORD)

NORTHWEST CORNER SECTION 6,
 TOWNSHIP 7 NORTH, RANGE 2 EAST
 SALT LAKE BASE AND MERIDIAN
 FOUND USGS BRASS CAP

FOUND WEBER COUNTY LINE MONUMENT
 PER WEBER COUNTY SURVEYOR

NORTHEAST CORNER SECTION 6,
 TOWNSHIP 7 NORTH, RANGE 2 EAST
 SALT LAKE BASE AND MERIDIAN
 FOUND 1944 GLO BRASS CAP (CLOSING
 CORNER 17.68' SOUTH)

EAST QUARTER CORNER SECTION 6,
 TOWNSHIP 7 NORTH, RANGE 2 EAST
 SALT LAKE BASE AND
 MERIDIAN FOUND 1941
 GLO BRASS CAP

BOUNDARY CURVE TABLE				
CURVE	LENGTH	RADIUS	LONG CHORD	LENGTH
C65	36.13'	23.00'	S 1°01'52" E	32.53'
C66	101.94'	343.00'	S 21°30'10" E	101.57'
C67	75.14'	218.00'	N 10°22'29" E	74.77'
C68	91.89'	58.50'	N 65°14'58" E	82.73'
C69	175.76'	283.00'	N 2°28'52" E	172.95'
C70	80.26'	118.00'	S 15°18'44" W	78.73'
C71	32.45'	23.00'	N 5°36'59" W	29.82'
C72	36.13'	23.00'	S 88°58'09" W	32.53'
C73	50.07'	283.00'	N 46°01'51" W	50.00'

LINE TABLE		
LINE	LENGTH	DIRECTION
L216	59.03'	N 69°45'02" W
L217	59.03'	N 69°45'02" W
L218	59.01'	N 69°45'02" W
L219	11.80'	S 41°6'00" E
L220	20.00'	S 41°6'00" E
L221	59.01'	N 69°45'02" W
L222	11.81'	S 41°6'00" E
L223	15.88'	S 41°6'00" E
L224	18.00'	S 41°6'00" E
L225	18.00'	S 41°6'00" E
L226	18.00'	S 41°6'00" E
L227	10.00'	S 41°6'00" E
L228	16.00'	S 41°6'00" E
L229	5.27'	S 34°47'56" W
L230	1.63'	N 53°50'59" W
L231	16.01'	N 5°42'44" W
L232	10.00'	N 5°42'44" W
L233	18.01'	N 5°42'44" W
L234	18.01'	N 5°42'44" W
L235	18.01'	N 5°42'44" W

LINE TABLE		
LINE	LENGTH	DIRECTION
L236	59.10'	S 69°45'02" E
L237	32.00'	N 20°16'34" E
L238	16.00'	N 20°14'58" E
L239	20.00'	N 20°18'24" E
L241	18.00'	N 20°14'58" E
L242	10.23'	N 20°16'40" E
L247	15.64'	N 20°14'58" E
L254	18.00'	N 20°14'58" E
L255	20.00'	N 20°14'58" E
L256	16.00'	N 20°14'58" E
L257	9.00'	N 20°14'58" E
L258	18.00'	N 41°6'00" W
L758	10.00'	N 41°6'00" W
L759	69.35'	S 82°37'10" W
L845	9.72'	S 41°6'00" E
L846	6.70'	N 5°42'44" W

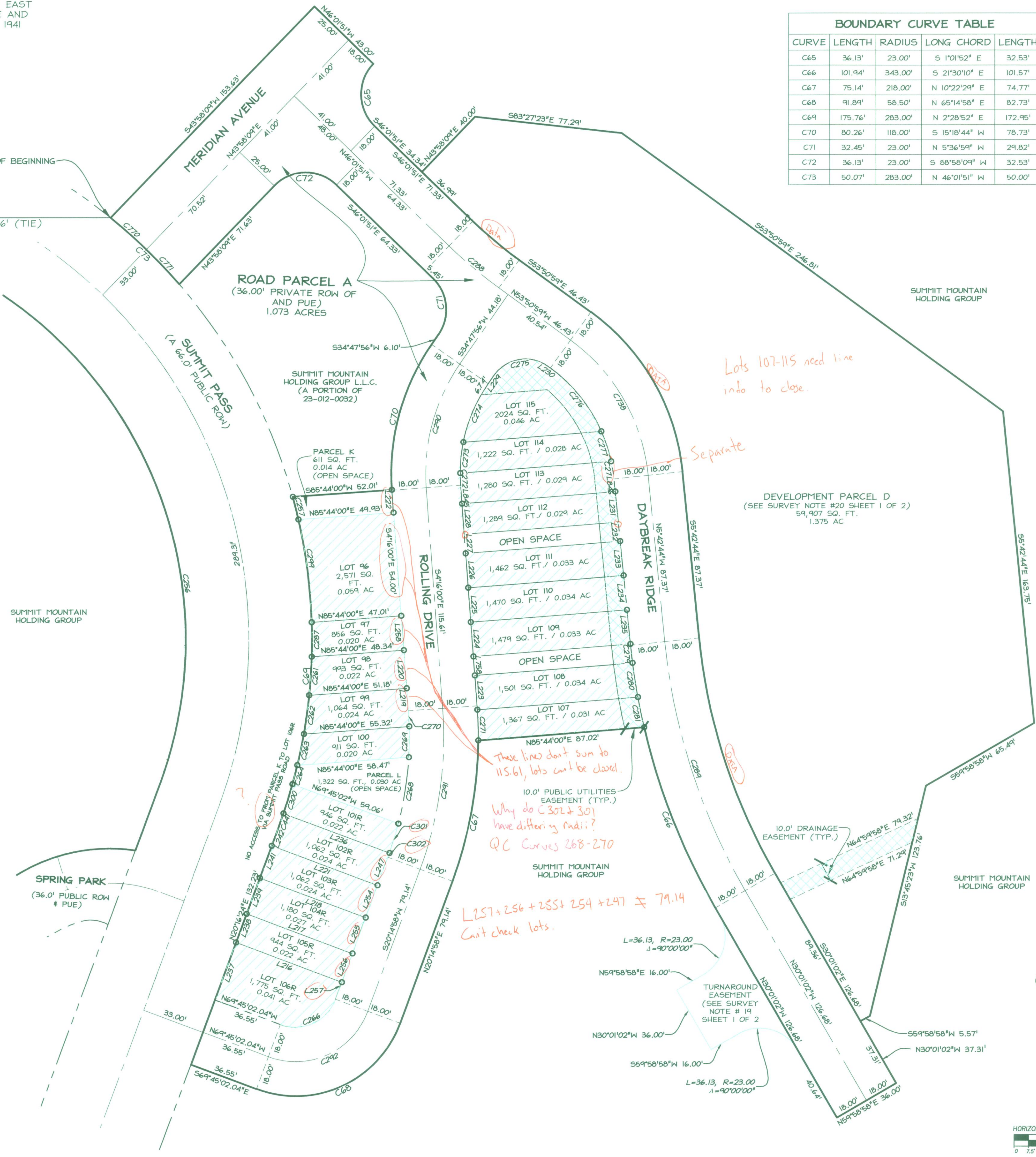
BUILD AREA TABLE	
LOT #	AREA IN ACRES
96	0.059
97	0.020
98	0.022
99	0.024
100	0.020
101	0.020
102	0.024
103	0.024
104	0.027
105	0.022
106	0.041
107	0.031
108	0.038
109	0.045
110	0.045
111	0.029
112	0.029
113	0.044
114	0.028
115	0.046

LEGEND	
	BOUNDARY LINE
	LOT LINE
	SECTION LINE
	QUARTER SECTION LINE
	COUNTY LINE
	ADJOINER DEED LINES
	AREA TIE LINES
	CALCULATED SECTION CORNER AS NOTED
	SECTION CORNER AS NOTED
	SET 5/8" X 2' REBAR WITH PLASTIC CAP
	BUILDING ENVELOPES
	EASEMENT

NO.	BY	DATE	REVISIONS
2	TD	2013-11-06	COUNTY REDLINES
1	TD	2013-09-17	PLAT NOTES & LEGAL DESCRIPTIONS

SUMMIT AT POWDER MOUNTAIN PHASE ID
 LOTS 57-62, 87-115,
 PARCEL K AND PARCEL L

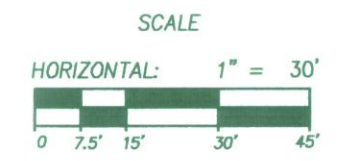
LOCATED IN SECTION 8 OF
 TOWNSHIP 7 NORTH, RANGE 2 EAST, SALT LAKE
 BASE AND MERIDIAN, WEBER COUNTY, UTAH



CURVE TABLE					
CURVE	LENGTH	RADIUS	DELTA	LONG CHORD	LENGTH
C257	12.18'	283.00'	2°27'57"	N 14°04'42" W	12.18'
C261	20.21'	283.00'	4°05'27"	N 3°49'12" E	20.20'
C262	20.47'	283.00'	4°08'37"	N 7°56'14" E	20.46'
C263	16.64'	283.00'	3°22'11"	N 11°41'38" E	16.64'
C264	10.26'	283.00'	2°04'38"	N 14°25'03" E	10.26'
C266	35.33'	22.50'	89°57'45"	N 65°13'49" E	31.81'
C268	35.21'	182.00'	11°05'01"	N 8°54'59" E	35.15'
C269	16.07'	182.00'	5°03'31"	N 0°50'43" E	16.06'
C270	8.20'	182.00'	2°34'57"	N 2°58'31" W	8.20'
C271	16.02'	218.00'	4°12'38"	N 1°36'19" W	16.02'
C272	6.28'	82.00'	4°23'20"	S 2°04'20" E	6.28'
C273	16.28'	82.00'	11°22'24"	S 5°48'32" W	16.25'
C274	33.35'	82.00'	23°18'12"	S 23°08'50" W	33.12'
C275	31.89'	20.00'	91°21'05"	S 80°28'24" W	28.62'
C276	43.06'	82.00'	30°05'09"	N 38°48'24" W	42.57'
C277	16.50'	82.00'	11°31'41"	N 17°59'59" W	16.47'
C278	9.34'	82.00'	6°31'24"	N 8°58'26" W	9.33'
C279	10.01'	345.68'	1°39'32"	S 6°26'39" E	10.01'
C280	18.06'	343.00'	3°00'59"	S 8°47'06" E	18.06'
C281	16.13'	343.00'	2°41'43"	S 11°38'27" E	16.13'

CURVE TABLE					
CURVE	LENGTH	RADIUS	DELTA	LONG CHORD	LENGTH
C287	18.05'	283.02'	3°39'16"	N 0°03'10" W	18.05'
C288	34.12'	250.00'	7°49'07"	S 49°56'25" E	34.09'
C289	137.86'	325.00'	24°18'18"	S 17°51'53" E	136.83'
C290	68.18'	100.00'	39°03'56"	S 15°15'58" W	66.87'
C291	85.58'	200.00'	24°30'58"	S 7°59'29" W	84.93'
C292	63.62'	40.50'	90°00'00"	S 65°14'58" W	57.28'
C299	66.34'	283.00'	13°25'52"	S 8°35'44" E	66.19'
C300	16.03'	283.00'	3°14'41"	N 17°04'42" E	16.02'
C301	16.03'	182.00'	5°02'49"	S 16°58'54" W	16.03'
C302	2.36'	264.15'	0°30'46"	S 20°14'58" W	2.36'
C441	7.77'	283.00'	1°34'21"	S 19°29'13" W	7.77'
C738	84.02'	100.00'	48°08'14"	N 29°46'51" W	81.57'
C770	25.03'	283.00'	5°04'05"	S 48°33'54" E	25.02'
C771	25.03'	283.00'	5°04'05"	S 43°29'49" E	25.02'

RECORDED #
 STATE OF UTAH, COUNTY OF WEBER,
 RECORDED AND FILED AT THE
 REQUEST OF:
 ENTRY NO. _____
 DATE: _____ TIME: _____
 BOOK: _____ PAGE: _____
 FEE \$ _____
WEBER COUNTY RECORDER



Sheet 2 of 2

NV5
NOLTE VERTICALFIVE
 5217 SOUTH STATE STREET, SUITE 300 MURRAY, UT 84107
 801.743.1300 TEL. 801.743.0300 FAX WWW.NOLTE.COM