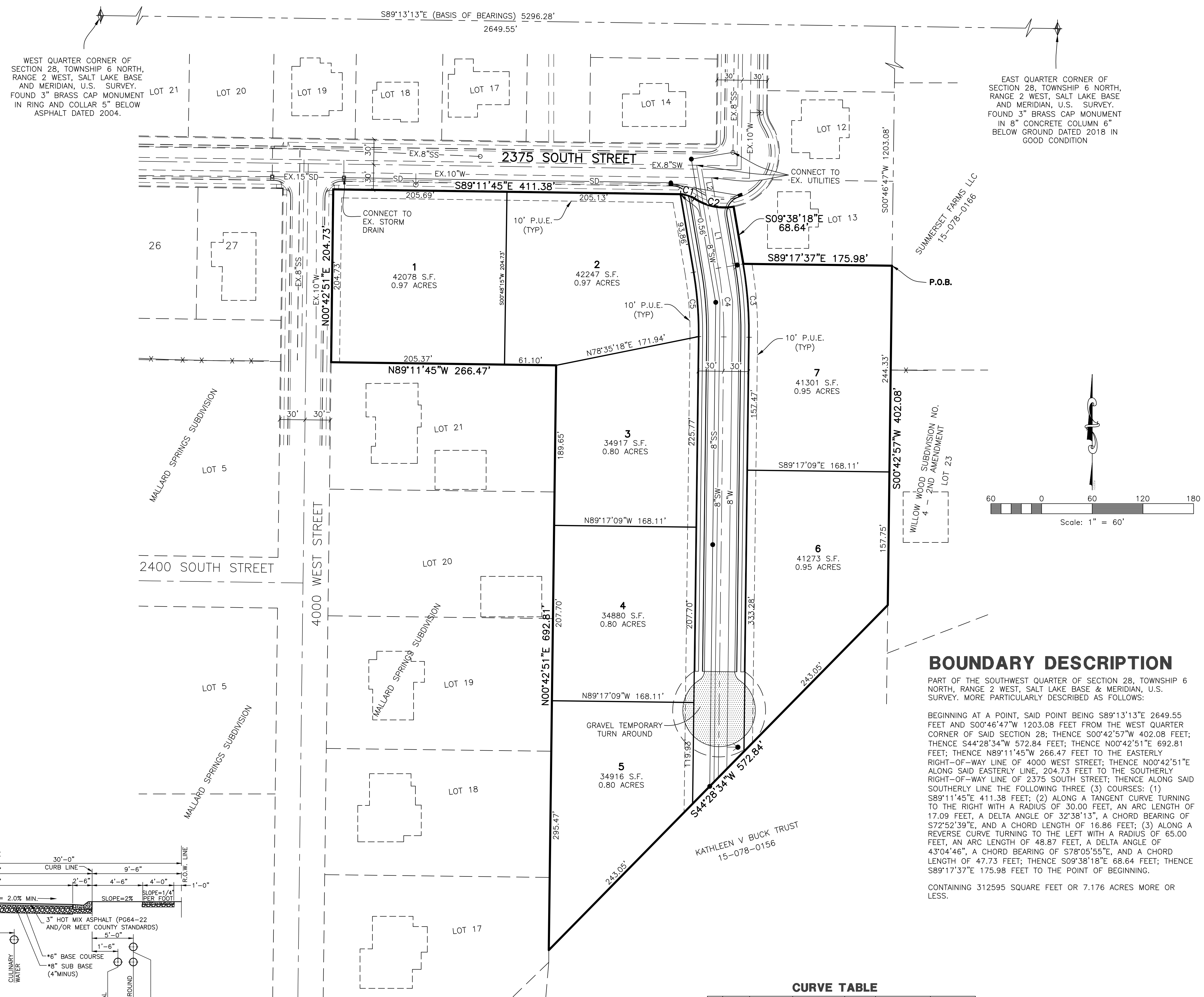




VICINITY MAP
SCALE: NONE



WEST QUARTER CORNER OF SECTION 28, TOWNSHIP 6 NORTH, RANGE 2 WEST, SALT LAKE BASE AND MERIDIAN, U.S. SURVEY. FOUND 3" BRASS CAP MONUMENT IN RING AND COLLAR 5" BELOW ASPHALT DATED 2004.

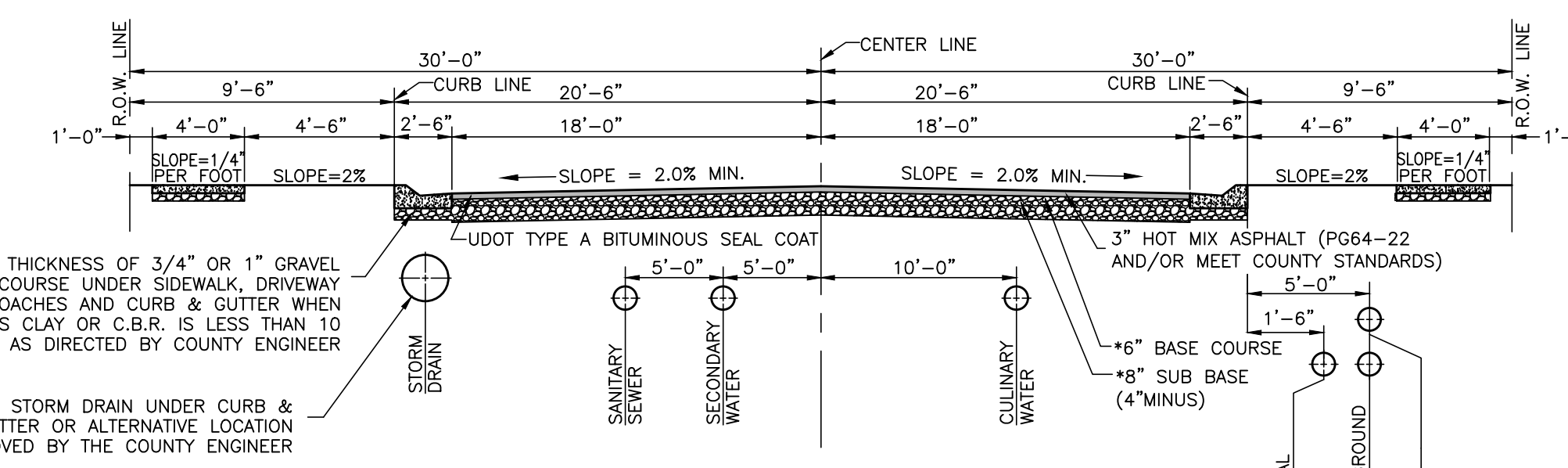
EAST QUARTER CORNER OF SECTION 28, TOWNSHIP 6 NORTH, RANGE 2 WEST, SALT LAKE BASE AND MERIDIAN, U.S. SURVEY. FOUND 3" BRASS CAP MONUMENT IN 8" CONCRETE COLUMN 6" BELOW GROUND DATED 2018 IN GOOD CONDITION

- LEGEND**
- ◆ = SECTION CORNER
 - = BOUNDARY LINE
 - - - = LOT LINE
 - - - = ADJOINING PROPERTY
 - - - = CENTERLINE
 - - - = EASEMENTS
 - - - = SECTION TIE LINE
 - SS— = PROPOSED SANITARY SEWER LINE
 - -EX.SS- - = EXISTING SANITARY SEWER LINE
 - SW— = PROPOSED SECONDARY WATER LINE
 - -EX.SW- - = EXISTING SECONDARY WATER LINE
 - W— = PROPOSED CULINARY WATER LINE (SIZE VARIES)
 - -EX.W- - = EXISTING CULINARY WATER LINE
 - SD— = PROPOSED STORM DRAIN (SIZE VARIES)
 - -EX.SD- - = EXISTING STORM DRAIN
 - X— = EXISTING FENCE LINE
 - = PROPOSED FIRE HYDRANT
 - = EXISTING FIRE HYDRANT
 - = PROPOSED SANITARY SEWER MANHOLE
 - = EXISTING SANITARY SEWER/STORM DRAIN MANHOLE
 - = PROPOSED STORM DRAIN MANHOLE
 - = PROPOSED SINGLE GRATE CATCH BASIN WITH BICYCLE-SAFE GRATE
 - = EXISTING CATCH BASIN
 - P.U.E. = PUBLIC UTILITY EASEMENT
 - — — = EXISTING STRUCTURE

BOUNDARY DESCRIPTION
PART OF THE SOUTHWEST QUARTER OF SECTION 28, TOWNSHIP 6 NORTH, RANGE 2 WEST, SALT LAKE BASE & MERIDIAN, U.S. SURVEY. MORE PARTICULARLY DESCRIBED AS FOLLOWS:

BEGINNING AT A POINT, SAID POINT BEING S89°13'13"E 2649.55 FEET AND S00°46'47"W 1203.08 FEET FROM THE WEST QUARTER CORNER OF SAID SECTION 28; THENCE S00°42'57"W 402.08 FEET; THENCE S44°28'34"W 572.84 FEET; THENCE N00°42'51"E 692.81 FEET; THENCE N89°11'45"W 266.47 FEET TO THE EASTERLY RIGHT-OF-WAY LINE OF 4000 WEST STREET; THENCE N00°42'51"E ALONG SAID EASTERLY LINE, 204.73 FEET TO THE SOUTHERLY RIGHT-OF-WAY LINE OF 2375 SOUTH STREET; THENCE ALONG SAID SOUTHERLY LINE THE FOLLOWING THREE (3) COURSES: (1) S89°11'45"E 411.38 FEET; (2) ALONG A TANGENT CURVE TURNING TO THE RIGHT WITH A RADIUS OF 30.00 FEET, AN ARC LENGTH OF 17.09 FEET, A DELTA ANGLE OF 32°38'13"; A CHORD BEARING OF S72°52'39"E, AND A CHORD LENGTH OF 16.86 FEET; (3) ALONG A REVERSE CURVE TURNING TO THE LEFT WITH A RADIUS OF 65.00 FEET, AN ARC LENGTH OF 48.87 FEET, A DELTA ANGLE OF 43°04'46", A CHORD BEARING OF S78°05'55"E, AND A CHORD LENGTH OF 47.73 FEET; THENCE S09°38'18"E 68.64 FEET; THENCE S89°17'37"E 175.98 FEET TO THE POINT OF BEGINNING.

CONTAINING 312595 SQUARE FEET OR 7.176 ACRES MORE OR LESS.



Street Section (60' R.O.W.)
SCALE: NONE

NOTE: THESE PAVEMENT THICKNESS SHALL BE CONSIDERED AS MINIMUMS AND MAY BE INCREASED BY THE COUNTY ENGINEER WHEN THE SUBGRADE C.B.R. IS LESS THAN 10 OR WHEN A GREATER DEPTH IS NECESSARY TO PROVIDE SUFFICIENT STABILITY. DEVELOPER MAY SUBMIT AN ALTERNATIVE PAVEMENT DESIGN BASED ON A SOILS ANALYSIS FOR APPROVAL BY THE COUNTY ENGINEER. COMPACTION TESTS ON BOTH SUB-BASE AND BASE COURSES WILL BE REQUIRED.

*VERIFY LOCATION WITH PHONE, GAS AND POWER COMPANIES.

CURVE TABLE

#	RADIUS	ARC LENGTH	CHORD LENGTH	TANGENT	CHORD BEARING	DELTA ANGLE
C1	30.00'	17.09'	16.86'	8.78'	S72°52'39"E	32°38'13"
C2	65.00'	48.87'	47.73'	25.66'	S78°05'55"E	43°04'46"
C3	483.26'	87.32'	87.20'	43.78'	S04°27'43"E	10°21'09"
C4	453.26'	81.90'	81.79'	41.06'	S04°27'43"E	10°21'09"
C5	423.26'	76.48'	76.37'	38.34'	S04°27'43"E	10°21'09"

LINE TABLE

LINE	BEARING	DISTANCE
L1	N09°38'18"W	75.98'
L2	N09°38'18"W	42.85'

Cameron Pointe Subdivision

Weber County, Utah

Reeve & Associates, Inc.
TRA
5160 S. 1500 W. RIVERDALE, UTAH 84405
TEL: (801) 621-3100 FAX: (801) 621-2666 WWW.REEVE-ASSOC.COM
LAND PLANNERS • CIVIL ENGINEERS • LAND SURVEYORS
TRAFFIC ENGINEERS • STRUCTURAL ENGINEERS • LANDSCAPE ARCHITECTS

REVISIONS

NO.	DATE	DESCRIPTION

Cameron Pointe Subdivision
PART OF THE SW 1/4 OF SECTION 28, T.6N., R.2W., S.L.B.&M., U.S. SURVEY
WEBER COUNTY, UTAH

Preliminary Plan

Project Info.
Engineer: N. Reeve
Planner: C. Cove
Designer: E. Roche
Date: 8-26-21
Name: CAMERON POINTE
Number: 3442-A48

Developer:
Doug Hamblin
Hamblin Investments
P.O. Box 625
Roy, UT. 84067
(801) 725-3782