

**THE RETREAT - PHASE 2
SUBDIVISION IMPROVEMENT DOCUMENTS
WEBER COUNTY, UTAH**

**OWNER:
CAPON CAPITAL, LLC
5577 EAST ELKHORN DRIVE
EDEN, UT 84310**

**DEVELOPER:
LEWIS HOMES INC.
5577 EAST ELKHORN DRIVE
EDEN, UT 84310**

**SITE ENGINEER:
MULHOLLAND DEVELOPMENT SOLUTIONS
P.O. BOX 680925
PARK CITY, UTAH 84068**

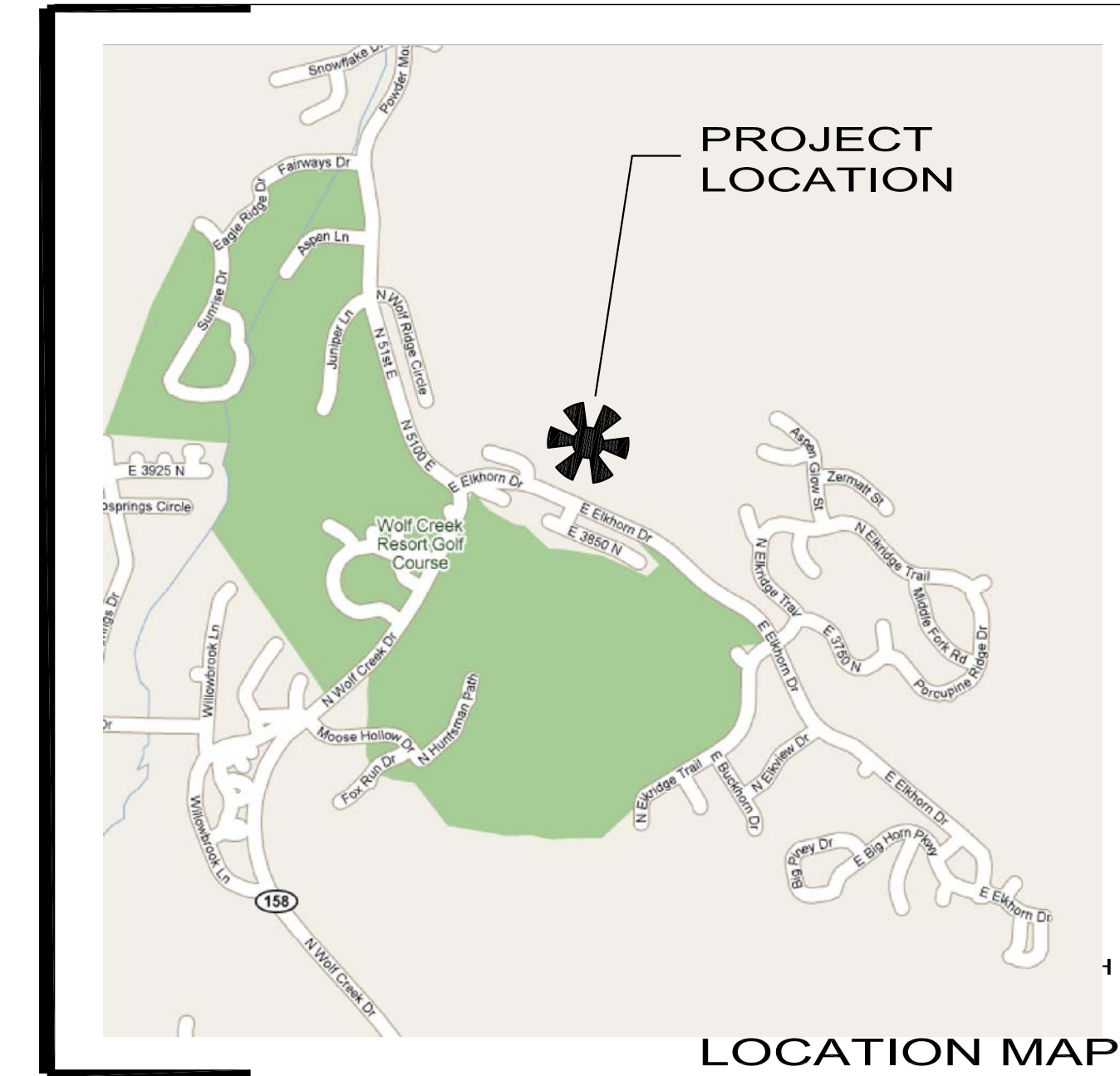
SUBMITTED: NOVEMBER 7, 2013

NOTES:

1. ALL MATERIALS AND CONSTRUCTION SHALL CONFORM TO WEBER COUNTY DESIGN STANDARDS, CONSTRUCTION SPECIFICATIONS AND STANDARD DRAWINGS, WOLF CREEK WATER CONSERVANCY INC. DEVELOPMENT PROCEDURES, DESIGN STANDARDS AND CONSTRUCTION SPECIFICATIONS, WOLF CREEK SEWER IMPROVEMENT DISTRICT CONSTRUCTION SPECIFICATIONS AND STANDARD DRAWINGS AND WOLF CREEK WATER COMPANY INC DEVELOPMENT PROCEDURES, DESIGN STANDARDS AND CONSTRUCTION SPECIFICATIONS AND TO CONTRACT DOCUMENTS PREPARED FOR THIS PROJECT.
2. FINISH GRADES ARE AT ROADWAY CENTERLINE, UNLESS OTHERWISE SPECIFICALLY NOTED.
3. ALL ROADWAY SIDE SLOPES ARE TO BE 2:1 SLOPES EXCEPT WHERE SPECIFICALLY NOTED OTHERWISE, OR AS DIRECTED BY THE ENGINEER.
4. MULHOLLAND DEVELOPMENT SOLUTIONS ASSUMES NO RESPONSIBILITY FOR EXISTING UTILITY LOCATIONS. THE UTILITIES SHOWN ON THESE DRAWINGS HAVE BEEN PLOTTED FROM THE BEST AVAILABLE INFORMATION. IT IS THE CONTRACTORS RESPONSIBILITY TO VERIFY THE LOCATION OF ALL UTILITIES PRIOR TO COMMENCEMENT OF ANY CONSTRUCTION.
5. CONTRACTOR SHALL CONFINE CONSTRUCTION ACTIVITY TO AREAS WITHIN THE RIGHT-OF-WAY, UTILITY EASEMENTS, AND DESIGNATED STORAGE, STAGING, ACCESS, CONSTRUCTION AND MATERIAL WASTE AREAS. CONTRACTOR SHALL ABIDE BY EROSION CONTROL REQUIREMENTS AS SET FORTH HEREIN AND AS REQUIRED BY STATE, COUNTY, AND LOCAL LAWS.
6. STABILIZATION MEASURES SHALL BE INITIATED AS SOON AS POSSIBLE IN DISTURBED PORTIONS OF THE SITE WHERE CONSTRUCTION ACTIVITIES HAVE TEMPORARILY OR PERMANENTLY CEASED.

SHEET INDEX

C101	COVER SHEET
	THE RETREAT - PHASE 2 SUBDIVISION PLAT
C201	INDEX PLAN
C202	MASTER UTILITY PLAN
C203	MASTER GRADING & EROSION CONTROL PLAN
C301	MOUNTAIN RIDGE DRIVE PLAN AND PROFILE STA 14+25 - 19+25
C302	MOUNTAIN RIDGE DRIVE PLAN AND PROFILE STA 14+25 - END PH 2
C303	BLAZING STAR DRIVE PLAN AND PROFILE STA 10+00 - END
C304	BLAZING STAR DRIVE PLAN AND PROFILE STA 10+00 - END
C305	YARROW DRIVE PLAN AND PROFILE STA 10+00-10+60
C401	OFF ROAD SEWER 1 PLAN AND PROFILE STA 10+00 - END
C501	MOUNTAIN RIDGE DRIVE CROSS SECTIONS
C502	BLAZING STAR DRIVE CROSS SECTIONS
C601	STANDARD DETAILS



path: M:\01_MDS\01_Eng\097_LDS\Wolf Creek\04_Design\RETREAT PH2\ file names: C101-RS-PH2-COVR.dwg | plot date: November 07, 2013 | plotted by: owner



THE RETREAT - PHASE 2
LEWIS HOMES INC.
5577 EAST ELKHORN DRIVE
EDEN, UT 84310



MULHOLLAND DEVELOPMENT SOLUTIONS

MAIL: P.O. BOX 680925 PARK CITY, UTAH 84068
VOICE: 435.901.2940 - cell 435.615.6550 - office 435.615.6546 - fax
IN PERSON: 5100 N. SILVER SPRINGS ROAD PARK CITY, UTAH 84098
kristlan@mulhollanddevelopment.com

NOT FOR CONSTRUCTION

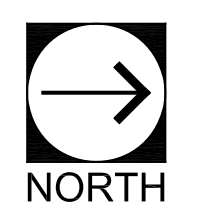
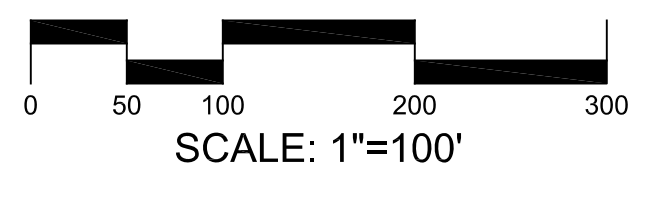
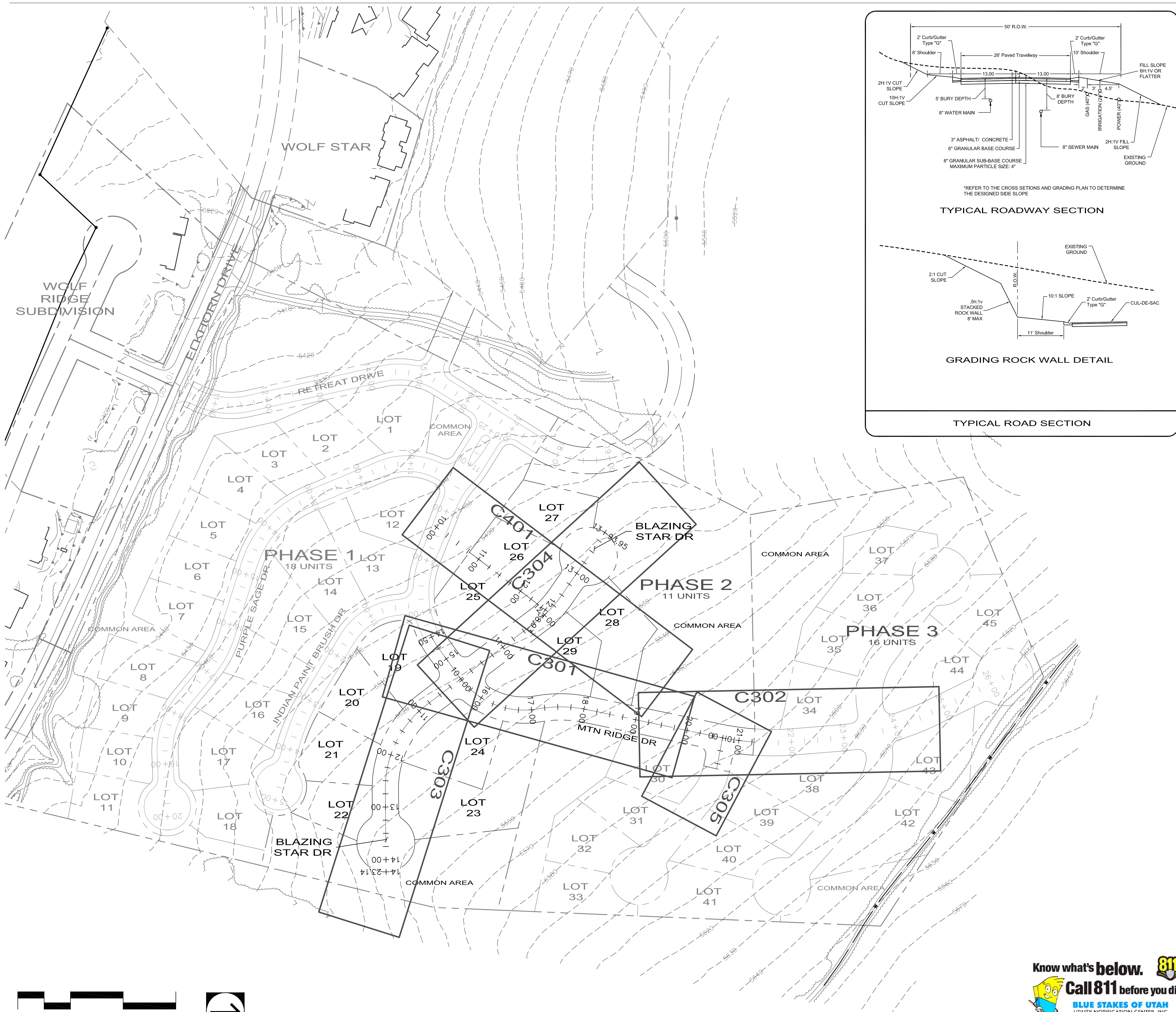
DATE: NOVEMBER 7, 2013
DESIGN BY: KJM
DRAWN BY: KJM
REVIEW BY:
PROJECT NO: RETREAT - PH 2
ISSUE: 2nd County Submittal

REVISIONS:
*
*
*
*

SHEET TITLE:
COVER

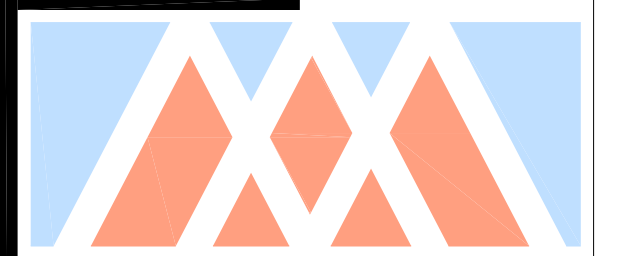
SHEET NUMBER:
C101

path: M:\01_MDS101_Eng\097_LDS\Wolf Creek\04_Design\RETREAT PH2
 file names: C201-R-PH2-INDEX.dwg | plot date: November 07, 2013 | plotted by: owner



LEWIS HOMES, INC.
 5677 EAST ELK HORN DRIVE
 EDEN, UT 84310

THE RETREAT - PHASE 2



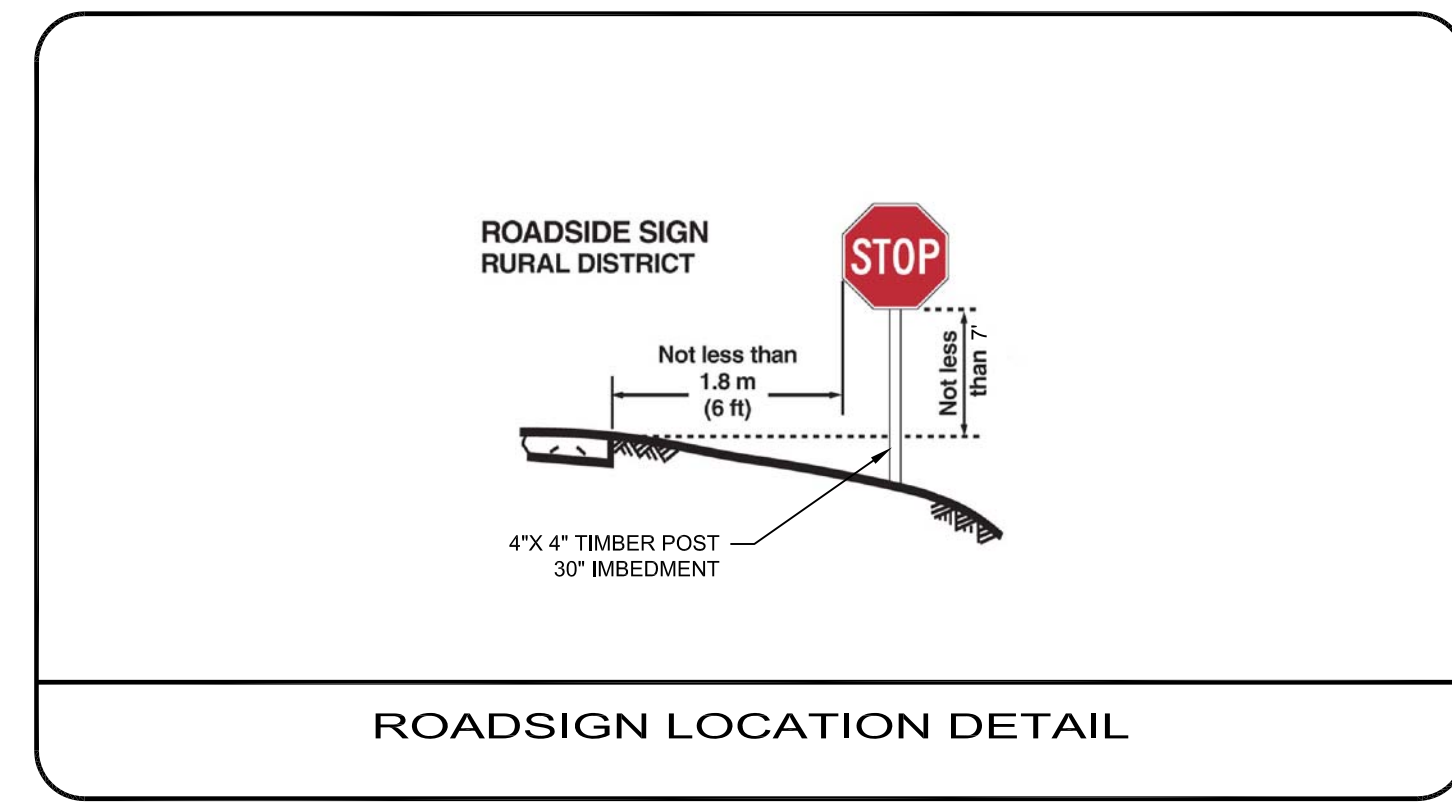
MULHOLLAND DEVELOPMENT SOLUTIONS
 MAIL: P.O. BOX 680925, PARK CITY, UTAH 84068
 VOICE: 435.901.2940, 435.615.6550, 435.615.6546
 IN PERSON: 5190 N. SILVER SPRINGS ROAD, PARK CITY, UTAH 84098
 kristlang@mulholland-development.com

NOT FOR CONSTRUCTION

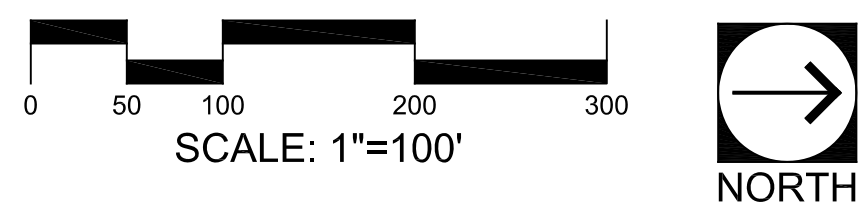
DATE:	NOVEMBER 7, 2013
DESIGN BY:	KJM
DRAWN BY:	KJM
REVIEW BY:	
PROJECT NO:	RETREAT - PH 2
ISSUE:	2nd County Submittal
REVISIONS:	

SHEET TITLE:
INDEX PLAN

SHEET NUMBER:
C201



path: M:\01_MDS\01_Eng\997_LDC\Wolf Creek\04_Design\RETREAT PH2
 file name: C202-R-UPH2-UTIL.dwg | plot date: November 07, 2013 | plotted by: owner



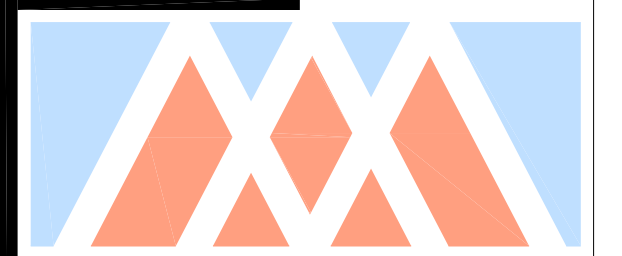
LEGEND

	8" DIP WATERLINE
	EXISTING 8" DIP WATERLINE
	FIRE HYDRANT
	EXISTING FIRE HYDRANT
	6" PVC IRRIGATION LINE
	EXISTING 6" PVC IRRIGATION LINE
	8" PVC SANITARY SEWER LINE
	EXISTING 8" PVC SANITARY SEWER LINE
	SANITARY SEWER MH
	EXISTING SANITARY SEWER MH



THE RETREAT - PHASE 2

LEWIS HOMES, INC.
 5677 EAST ELKHORN DRIVE
 EDEN, UT 84310



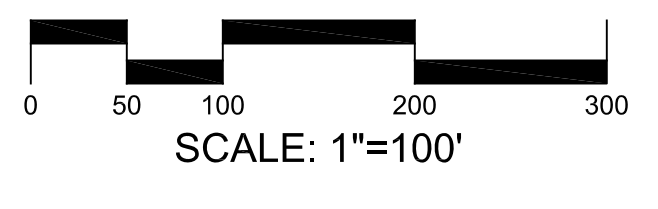
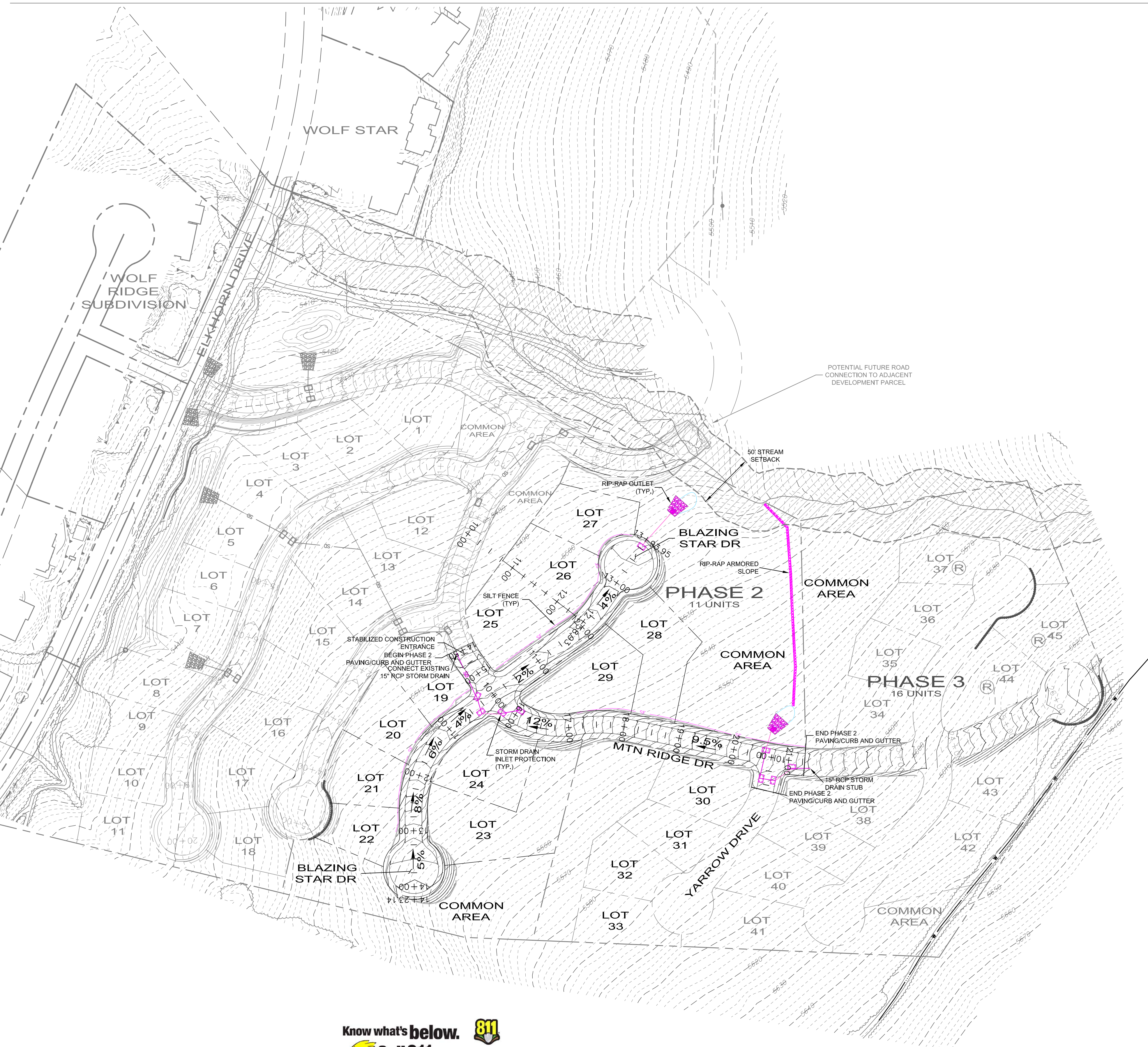
MULHOLLAND DEVELOPMENT SOLUTIONS
 MAIL VOICE
 P.O. BOX 680925 435.001.2940 - cell
 PARK CITY, UTAH 84068 435.615.6550 - office
 435.615.6546 - fax
 IN PERSON
 5100 N. SILVER SPRINGS ROAD
 PARK CITY, UTAH 84098
 kristlang@mulholland-development.com

NOT FOR CONSTRUCTION

DATE:	NOVEMBER 7, 2013
DESIGN BY:	KJM
DRAWN BY:	KJM
REVIEW BY:	
PROJECT NO:	RETREAT - PH 2
ISSUE:	2nd County Submittal
REVISIONS:	
SHEET TITLE:	

MASTER UTILITY PLAN
 SHEET NUMBER:
C202

path: M:\01_MDS\01_Eng\997_LDS\Wolf Creek\04_Design\RETREAT PH2
 file names: C202-R-2-PH2-UTIL.dwg | plot date: November 07, 2013 | plotted by: owner



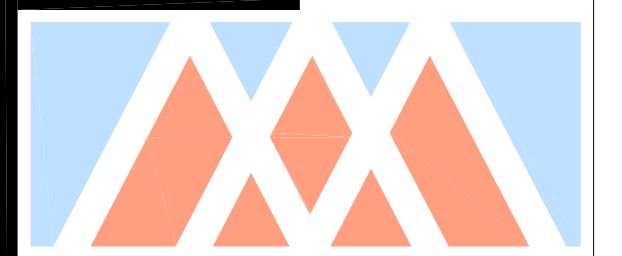
Know what's below. 811
Call 811 before you dig.
 BLUE STAKES OF UTAH
 UTILITY NOTIFICATION CENTER, INC.
 www.bluestakes.org
 1-800-662-4111

- 15' RCP STORM DRAIN LINE
- 15' CP STORM DRAIN LINE
- EXISTING 15' STORM DRAIN LINE
- STORM DRAIN INLET
- EXISTING STORM DRAIN INLET
- RIP-RAP OUTLET
- EXISTING RIP-RAP OUTLET



THE RETREAT - PHASE 2

LEWIS HOMES, INC.
 5677 EAST ELKHORN DRIVE
 EDEN, UT 84310



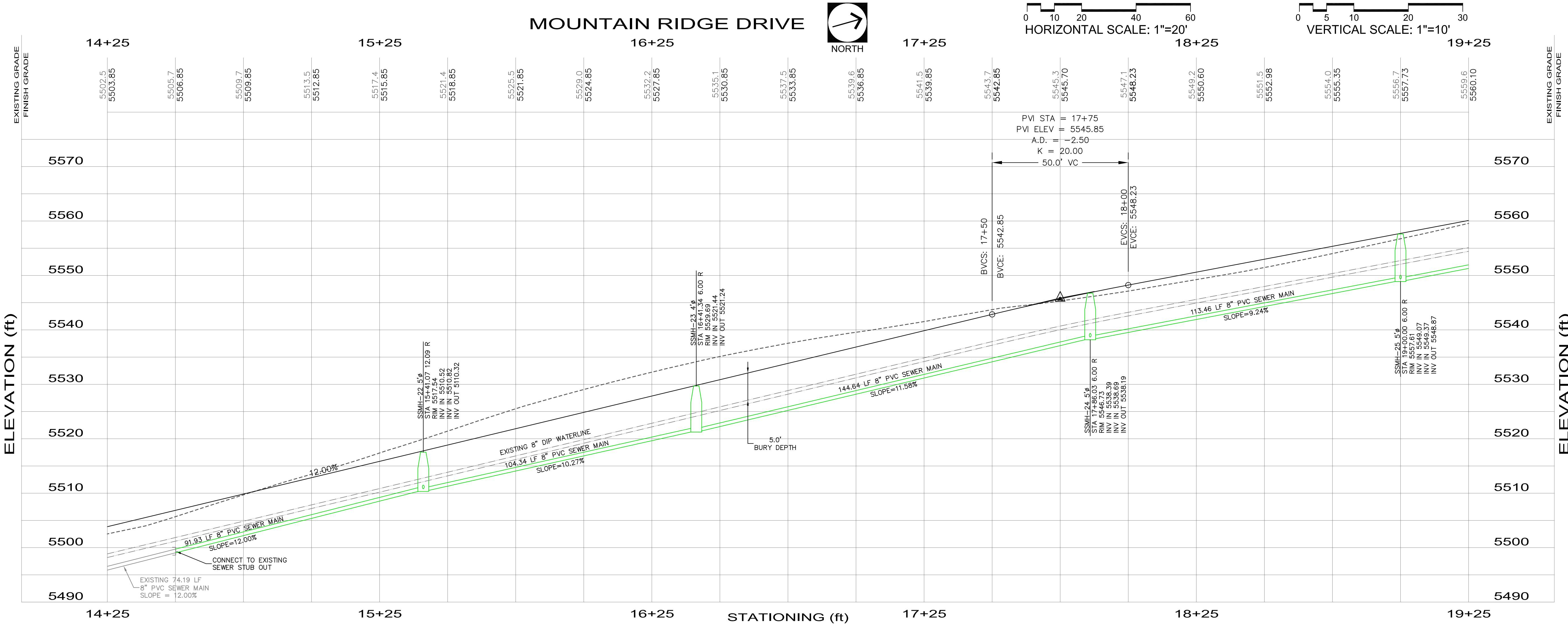
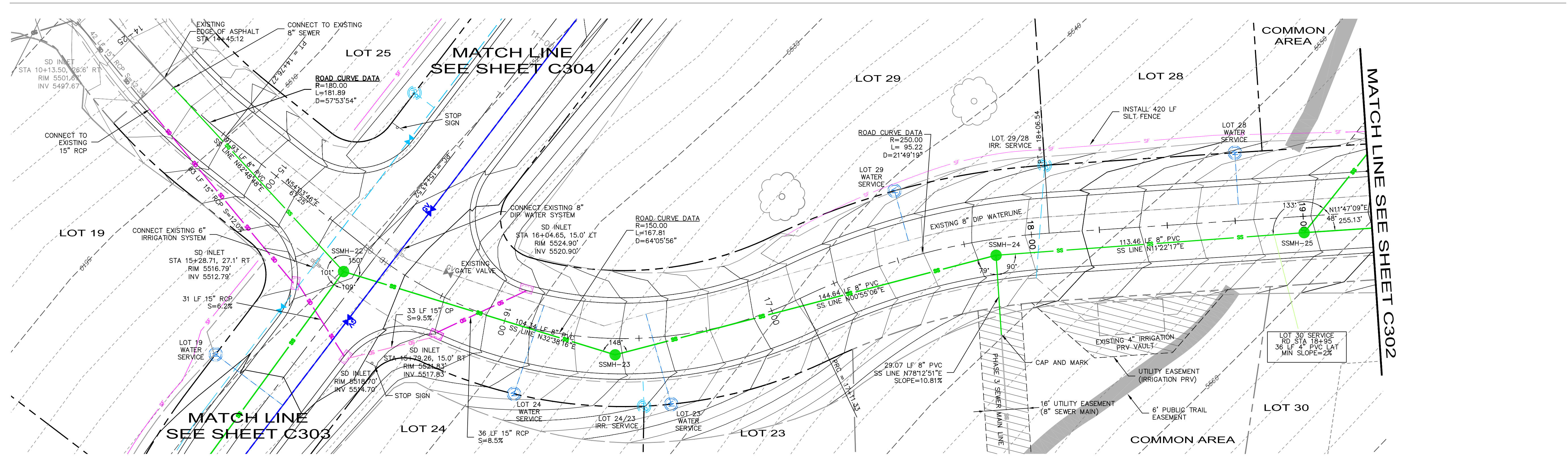
MULHOLLAND DEVELOPMENT SOLUTIONS
 MAIL VOICE:
 P.O. BOX 680925 435.901.2940 - call
 PARK CITY, UTAH 84068 435.615.6550 - office
 435.615.6546 - fax
 IN PERSON
 5190 N. SILVER SPRINGS ROAD
 PARK CITY, UTAH 84098
 kristlang@mulholland-development.com

NOT FOR CONSTRUCTION

DATE:	NOVEMBER 7, 2013
DESIGN BY:	KJM
DRAWN BY:	KJM
REVIEW BY:	
PROJECT NO:	RETREAT - PH 2
ISSUE:	2nd County Submittal
REVISIONS:	

SHEET TITLE:
EROSION CONTROL AND GRADING PLAN

SHEET NUMBER:
C203



path: M:\01_MDS\01_Erign\997_LDC\Wofl_Creek\04_Design\RETREAT PH2
 file names: C301-RC-PH2-RD2-Rowg | plot date: November 07, 2013 | plotted by: owner



THE RETREAT - PHASE 2

LEWIS HOMES, INC.
5677 EAST ELKHORN DRIVE
EDEN, UT 84310



MULHOLLAND DEVELOPMENT SOLUTIONS

MAIL: P.O. BOX 680925
PARK CITY, UTAH 84068

VOICE: 435.901.2940 - cell
435.615.6550 - office
435.615.6546 - fax

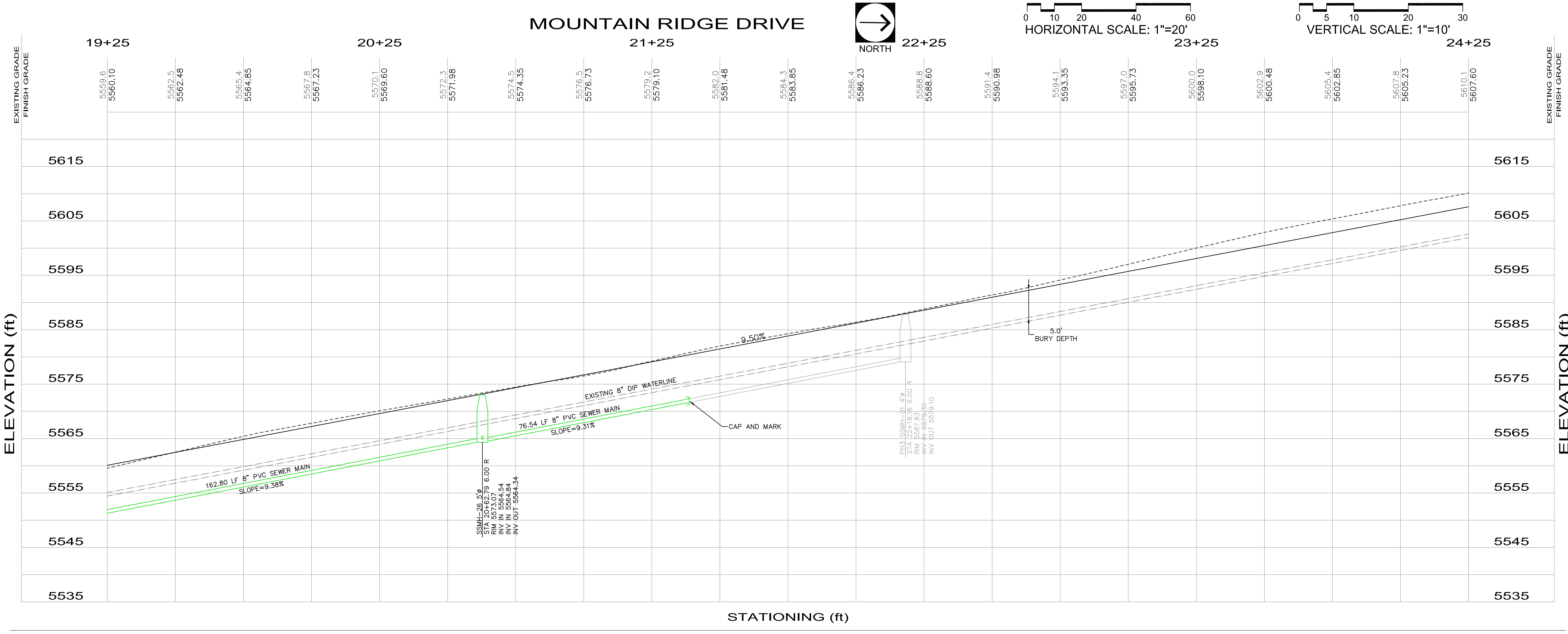
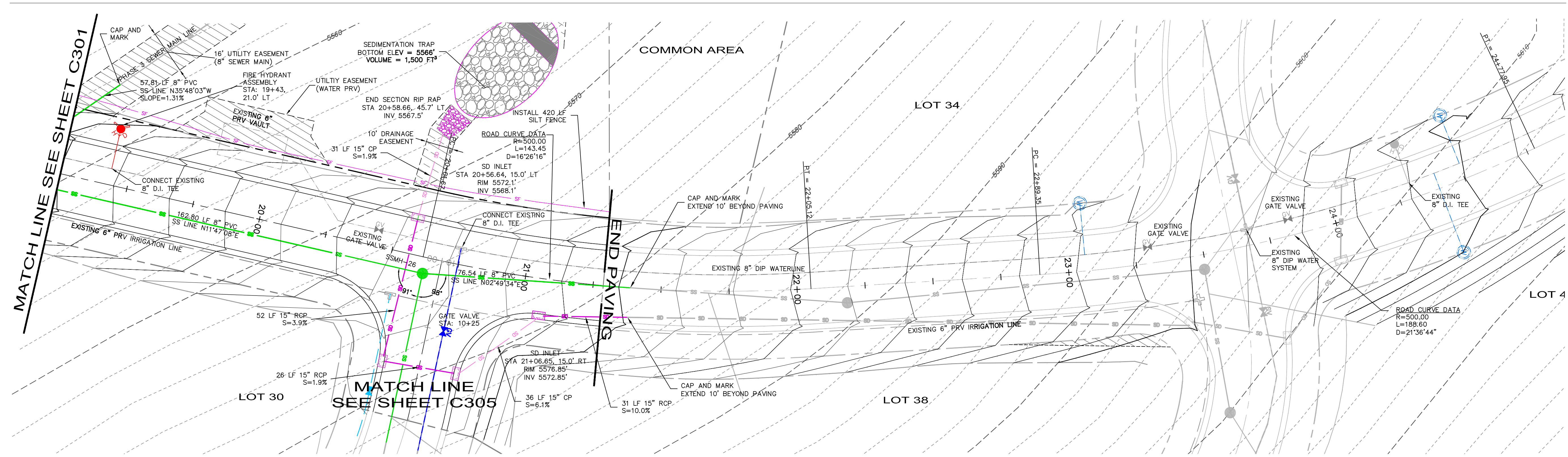
IN PERSON: 5160 N. SILVER SPRINGS ROAD
PARK CITY, UTAH 84098

krstian@mulholland-development.com

NOT FOR CONSTRUCTION

DATE:	NOVEMBER 7, 2013
DESIGN BY:	KJM
DRAWN BY:	KJM
REVIEW BY:	
PROJECT NO:	RETREAT - PH 2
ISSUE:	2nd County Submittal
REVISIONS:	
SHEET TITLE:	MTN RIDGE DR PLAN & PROFILE STA 14+25 - 19+25
SHEET NUMBER:	C301

path: M:\01_MDS\01_Eng\097_LDS\WOLF_Creek\04_Design\RETREAT_PH2
 file name: C301-RC-PH2-RD2-RC.dwg | plot date: November 06, 2013 | plotted by: owner





THE RETREAT - PHASE 2

LEWIS HOMES, INC.
 5677 EAST ELKHORN DRIVE
 EDEN, UT 84310



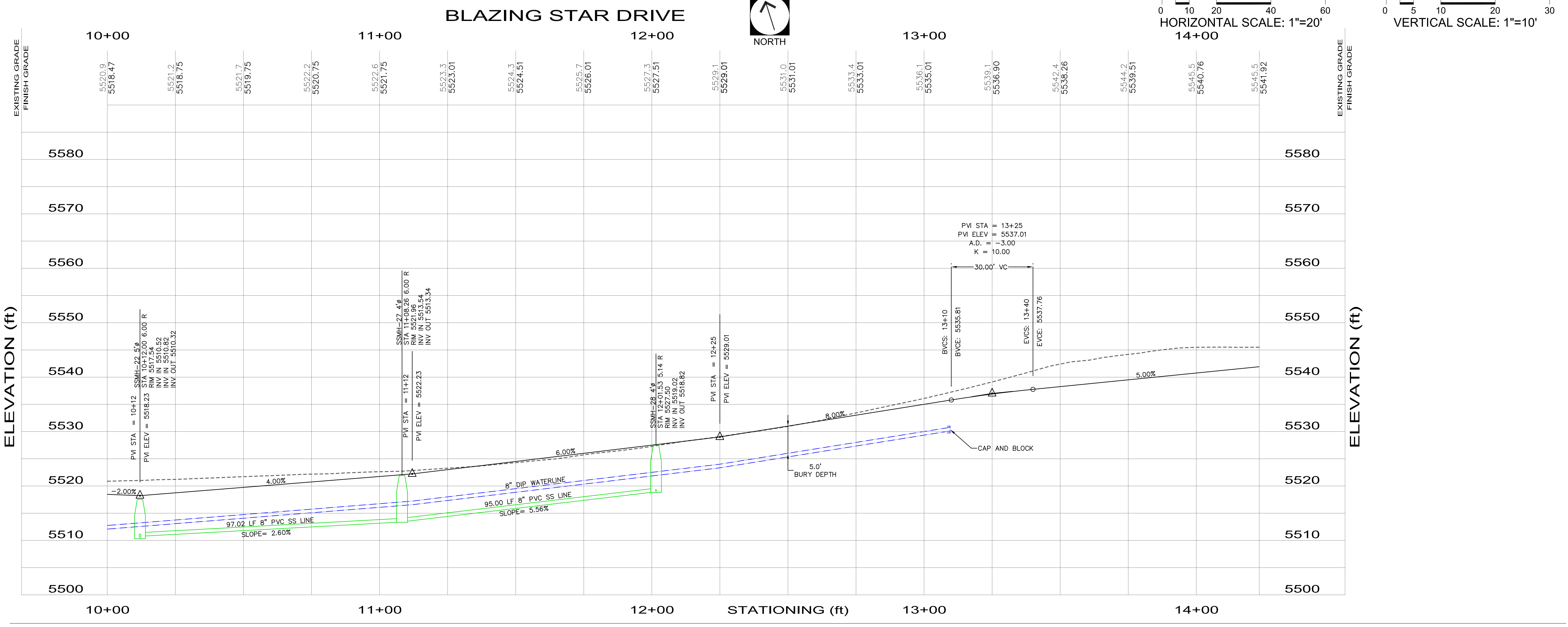
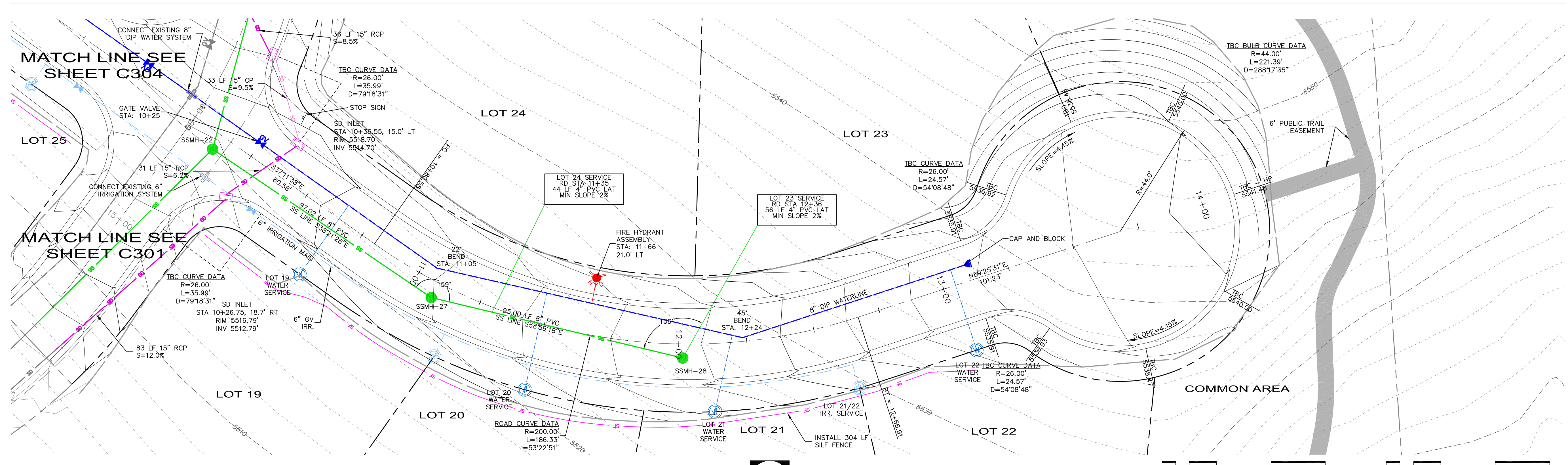
MULHOLLAND DEVELOPMENT SOLUTIONS

MAIL: P.O. BOX 680925, PARK CITY, UTAH 84068
 VOICE: 435.901.2940, 435.615.6550 - office, 435.615.6546 - fax
 IN PERSON: 5180 N. SILVER SPRINGS ROAD, PARK CITY, UTAH 84098
 kristlang@mulholland-development.com

NOT FOR CONSTRUCTION

DATE:	NOVEMBER 7, 2013
DESIGN BY:	KJM
DRAWN BY:	KJM
REVIEW BY:	
PROJECT NO:	RETREAT - PH 2
ISSUE:	2nd County Submittal
REVISIONS:	
SHEET TITLE:	MTN RIDGE DR PLAN & PROFILE STA 19+25 - 21+28.72
SHEET NUMBER:	C302

path: M:\01_MDS\01_Eng\097_LDS\Wolf Creek\04_Design\RETREAT PH2
 file names: C303-R-RETREAT-PLAN.dwg | plot date: November 07, 2013 | plotted by: owner



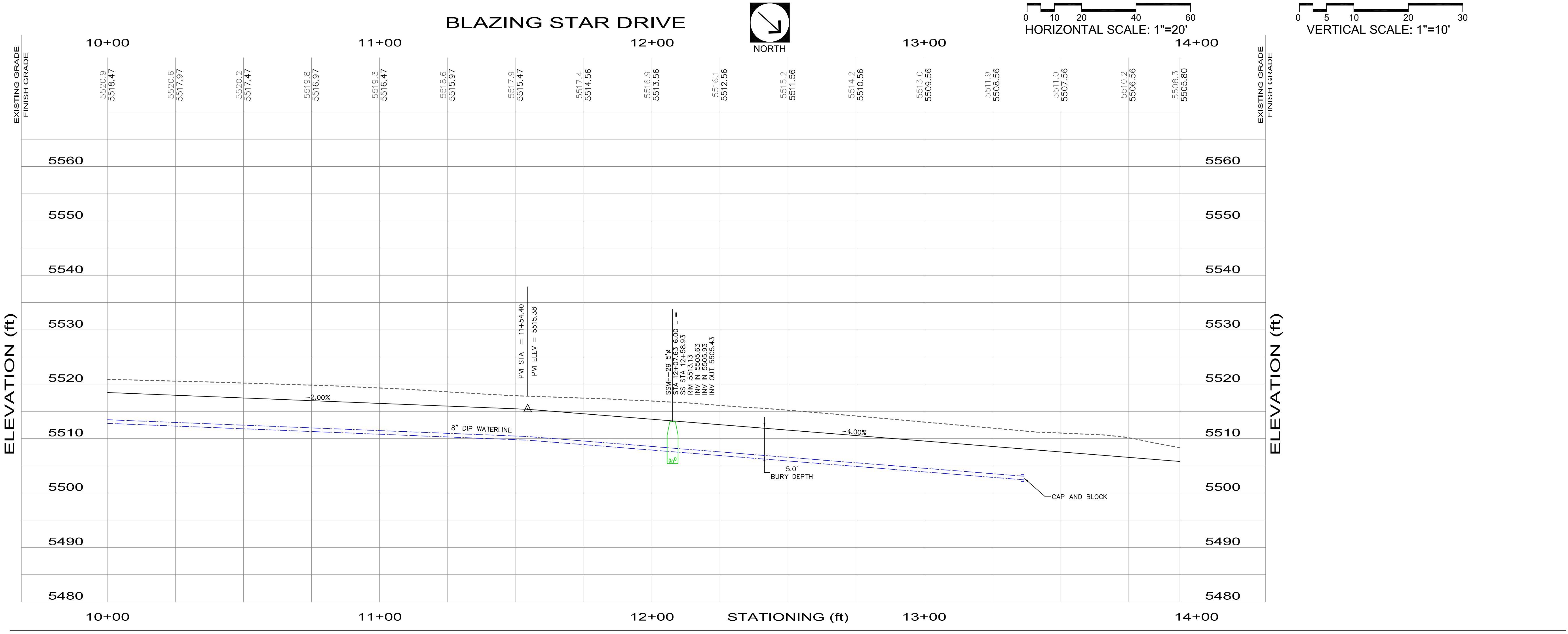
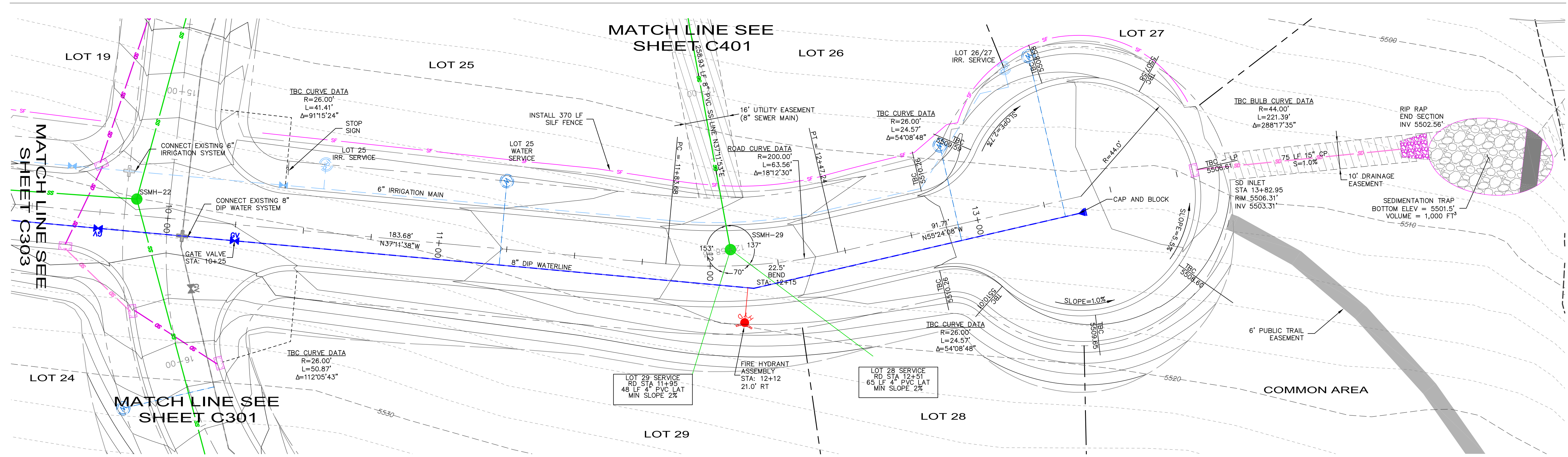
THE RETREAT - PHASE 2
 LEWIS HOMES, INC.
 5677 EAST EULKORN DRIVE
 EDEN, UT 84310

MULHOLLAND DEVELOPMENT SOLUTIONS
 MAIL: P.O. BOX 680925, PARK CITY, UTAH 84068
 VOICE: 435.901.2940, 435.615.6550
 IN PERSON: 5160 N. SILVER SPRINGS ROAD, PARK CITY, UTAH 84098
 FAX: 435.615.6546, 435.615.6546
 kristlang@mulholland-development.com

NOT FOR CONSTRUCTION

DATE:	NOVEMBER 7, 2013
DESIGN BY:	KJM
DRAWN BY:	KJM
REVIEW BY:	
PROJECT NO:	RETREAT - PH 2
ISSUE:	2nd County Submittal
REVISIONS:	
SHEET TITLE: BLAZING STAR DRIVE PLAN & PROFILE STA 10+00 - END	
SHEET NUMBER: C303	

path: M:\01_MDS\01_Eng\097_LDS\Wolf_Creek\04_Design\RETREAT_PH2
 file name: C304-R3-PH2-RD6-GHW.dwg | plot date: November 06, 2013 | plotted by: owner





THE RETREAT - PHASE 2

LEWIS HOMES, INC.
 5677 EAST ELKHORN DRIVE
 EDEN, UT 84310



MULHOLLAND DEVELOPMENT SOLUTIONS

MAIL: P.O. BOX 680925
 PARK CITY, UTAH 84068

VOICE: 435.901.2940
 435.615.6550 - office
 435.615.6546 - fax

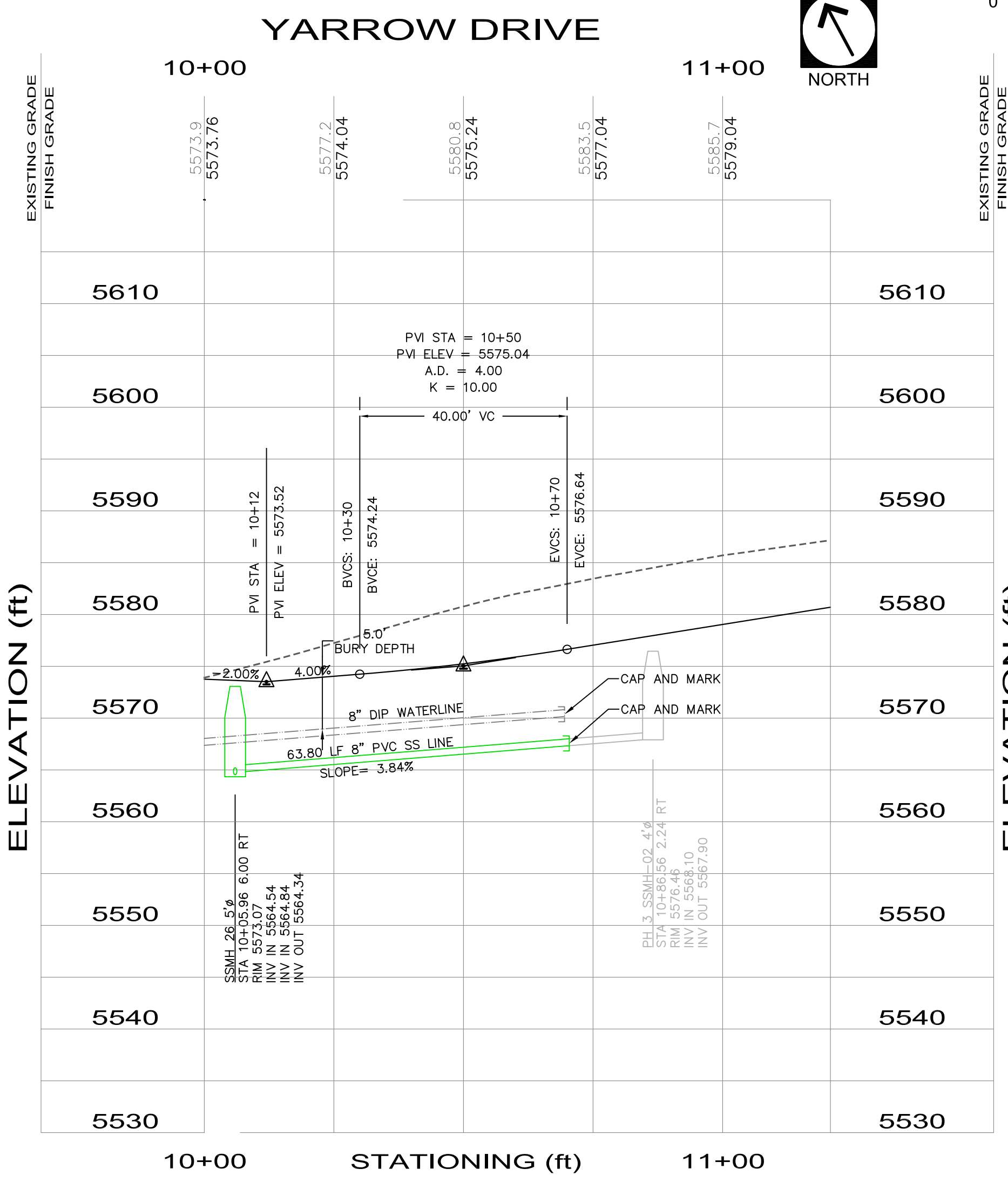
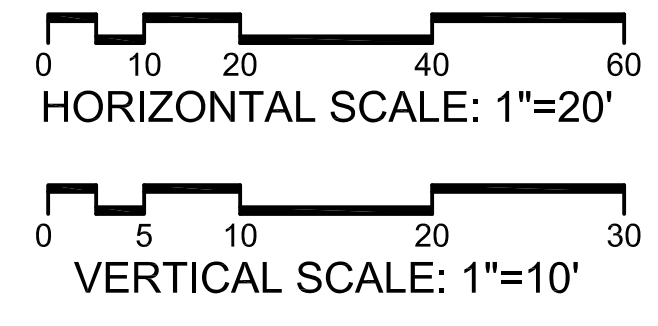
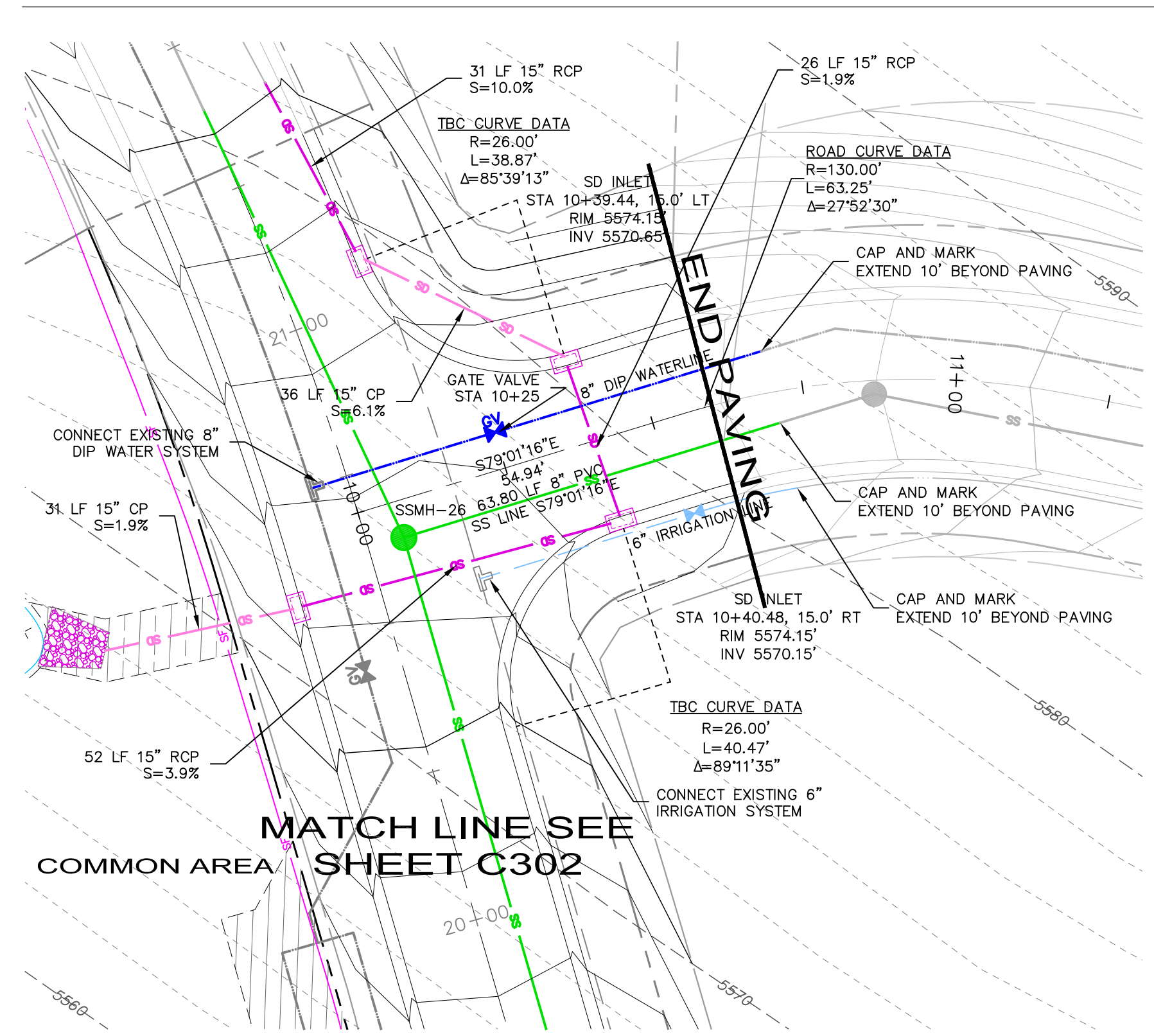
IN PERSON: 5160 N. SILVER SPRINGS ROAD
 PARK CITY, UTAH 84098

kristlang@mulholland-development.com

NOT FOR CONSTRUCTION

DATE:	NOVEMBER 7, 2013
DESIGN BY:	KJM
DRAWN BY:	KJM
REVIEW BY:	
PROJECT NO:	RETREAT - PH 2
ISSUE:	2nd County Submittal
REVISIONS:	
SHEET TITLE: BLAZING STAR DRIVE PLAN & PROFILE STA 10+00 - END	
SHEET NUMBER: C304	

path: M:\01_MDS\01_Eng\097_LDS\Wolf Creek\04_Design\RETREAT PH2 | plot date: November 07, 2013 | plotted by: owner
 file name: C305-R-RETREAT PH2-BC.dwg



THE RETREAT - PHASE 2
 LEWIS HOMES, INC.
 5677 EAST ELKHORN DRIVE
 EDEN, UT 84310



MULHOLLAND DEVELOPMENT SOLUTIONS
 MAIL VOICE
 P.O. BOX 680925 435.001.2940 - cell
 PARK CITY, UTAH 84068 435.615.6550 - office
 435.615.6546 - fax
 IN PERSON
 5160 N. SILVER SPRINGS ROAD
 PARK CITY, UTAH 84098
 kristlang@mulholland-development.com

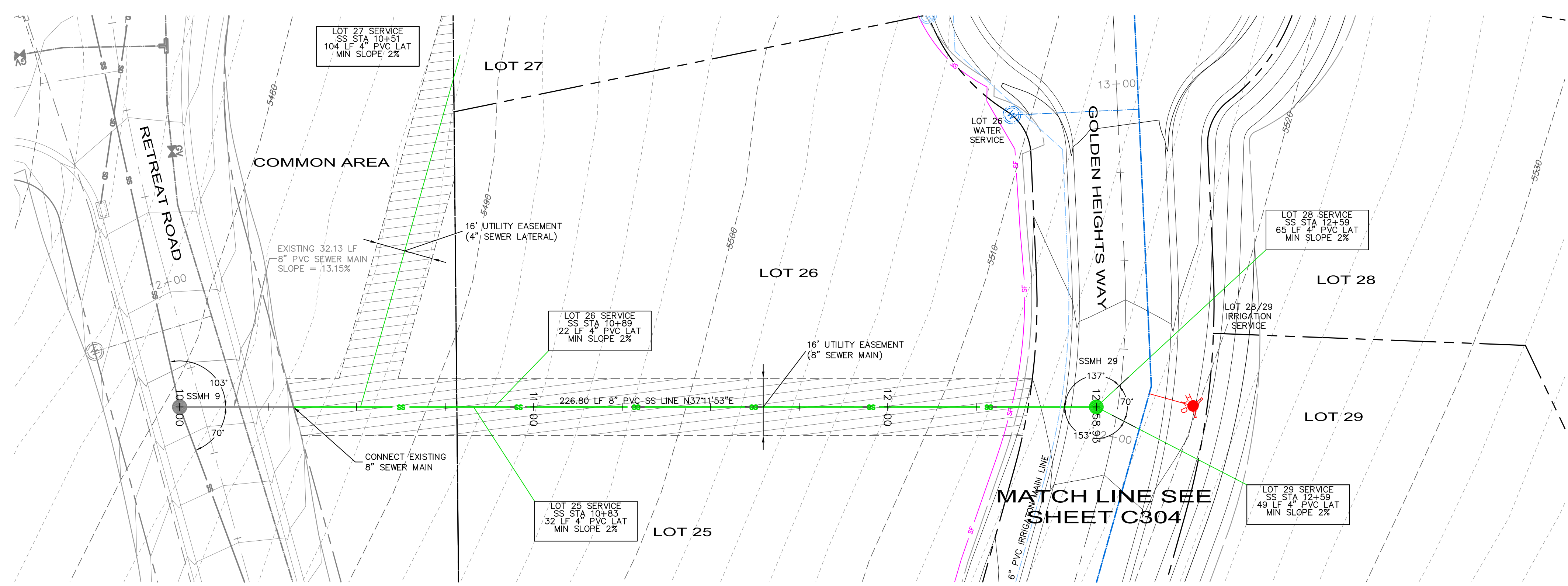
NOT FOR CONSTRUCTION

DATE:	NOVEMBER 7, 2013
DESIGN BY:	KJM
DRAWN BY:	KJM
REVIEW BY:	
PROJECT NO:	RETREAT - PH 2
ISSUE:	2nd County Submittal
REVISIONS:	

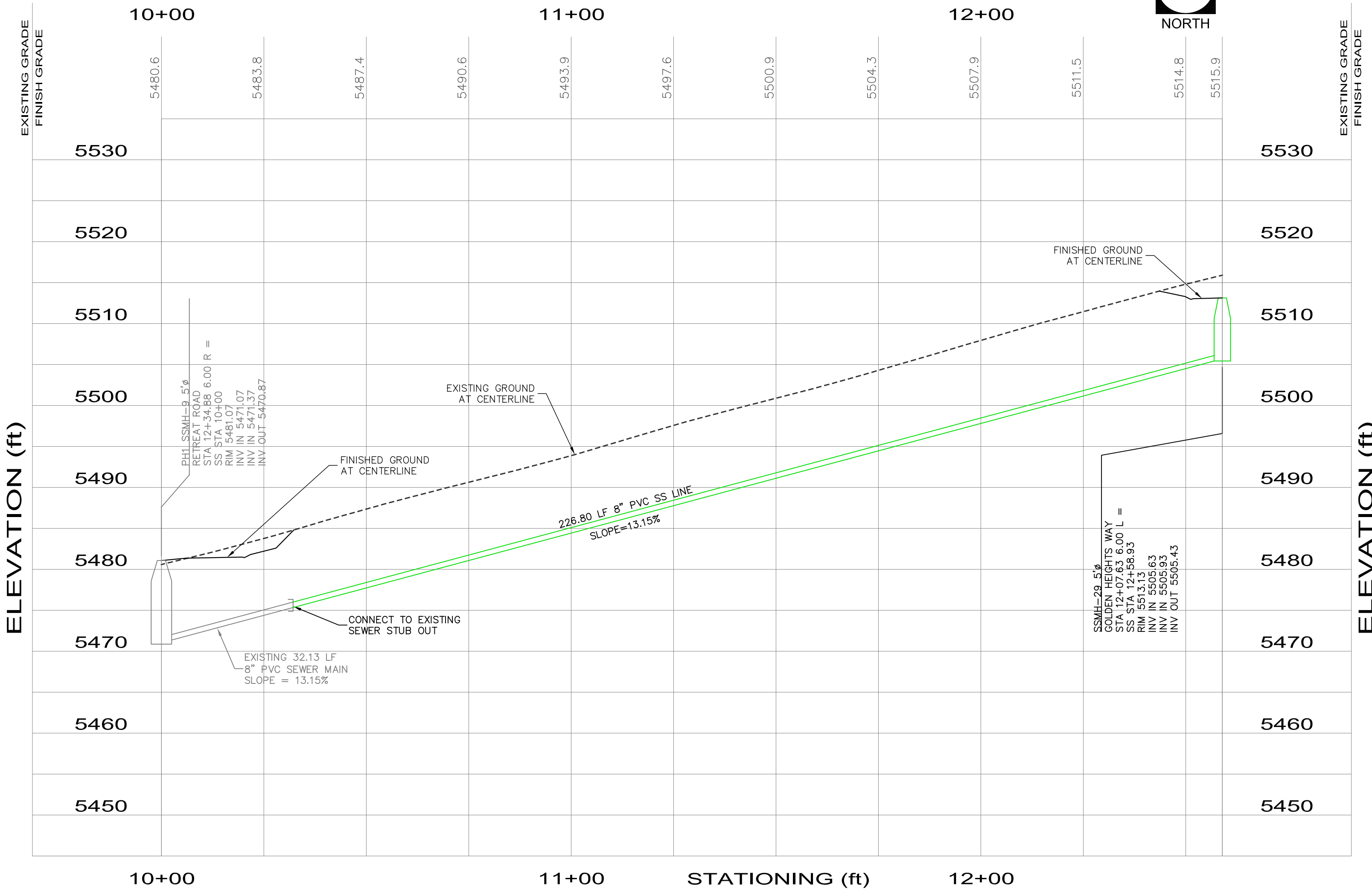
SHEET TITLE:
**YARROW DRIVE
 PLAN & PROFILE
 STA 10+00 - 10+60**

SHEET NUMBER:
C305

path: M:\01_MDS\01_Eng\097_LDS\Wof Creek\04_Design\RETREAT PH2\ file names: C401-R-PPH2-SS-BKL.dwg | plot date: November 07, 2013 | plotted by: owner

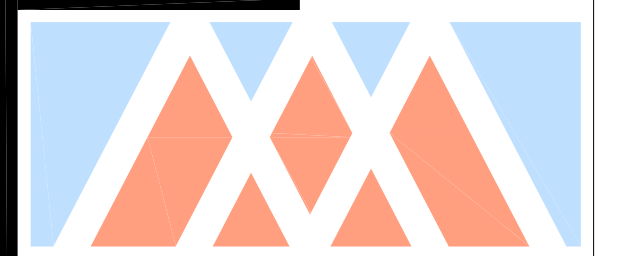


OFF ROAD SEWER LINE 1



THE RETREAT - PHASE 2

LEWIS HOMES, INC.
5677 EAST ELKHORN DRIVE
EDEN, UT 84310



MULHOLLAND DEVELOPMENT SOLUTIONS
MAIL VOICE
P.O. BOX 680925 435.901.2940 - cell
PARK CITY, UTAH 84068 435.615.6550 - office
435.615.6546 - fax
IN PERSON
5160 N. SILVER SPRINGS ROAD
PARK CITY, UTAH 84098
kristlang@mulholland-development.com

NOT FOR CONSTRUCTION

DATE:	NOVEMBER 7, 2013
DESIGN BY:	KJM
DRAWN BY:	KJM
REVIEW BY:	
PROJECT NO:	RETREAT - PH 2
ISSUE:	2nd County Submittal
REVISIONS:	

SHEET TITLE:
OFF ROAD SEWER
PLAN & PROFILE

SHEET NUMBER:
C401

MOUNTAIN RIDGE DRIVE



LEWIS HOMES, INC.
5677 EAST ELKHORN DRIVE
EDEN, UT 84310

THE RETREAT - PHASE 2



MULHOLLAND DEVELOPMENT SOLUTIONS
MAIL: P.O. BOX 680925 VOICE: 435.901.2940 - cell
PARK CITY, UTAH 84068 435.615.6550 - office 435.615.6546 - fax
IN PERSON: 5160 N. SILVER SPRINGS ROAD
PARK CITY, UTAH 84098
kristlang@mulholland-development.com

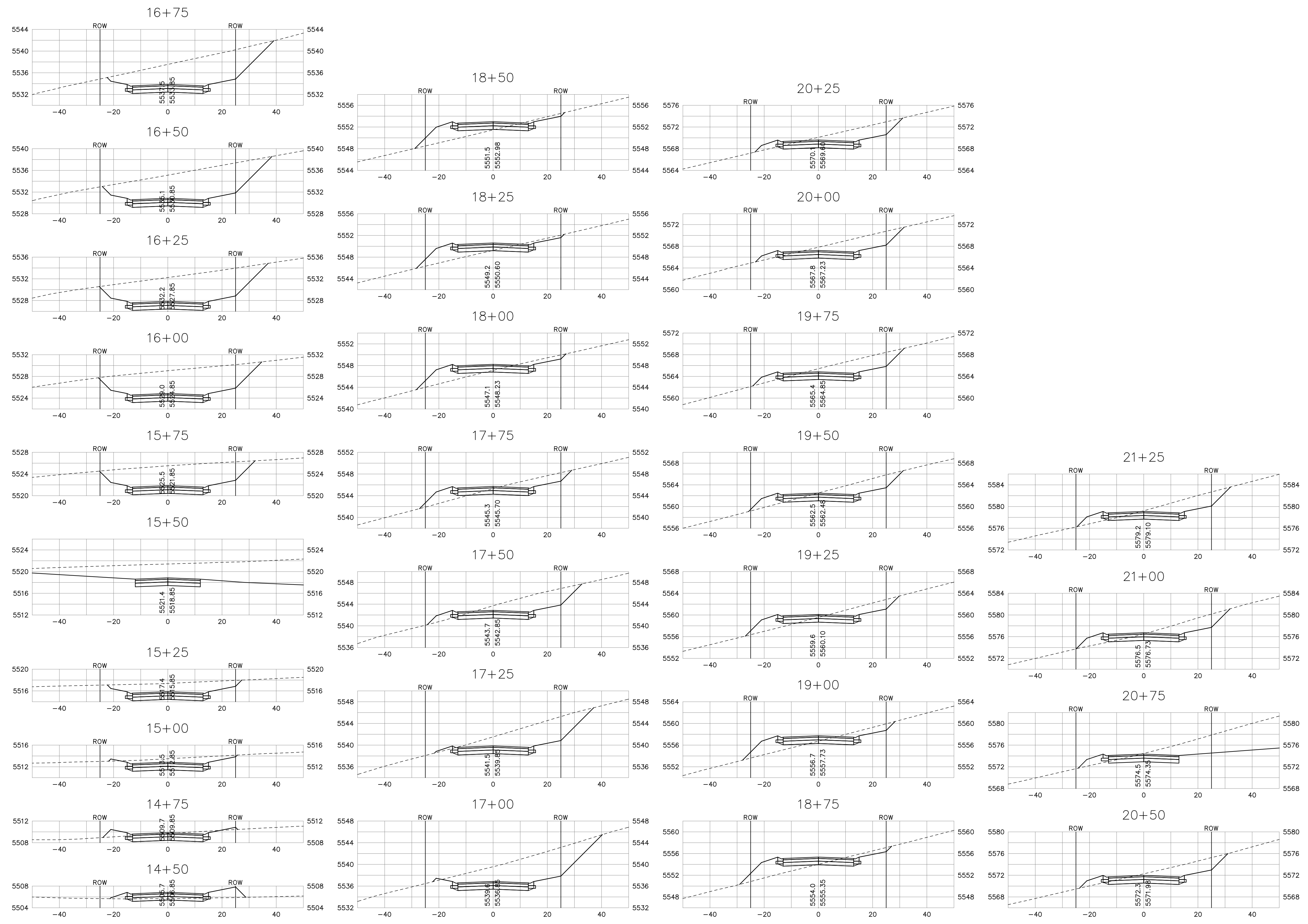
NOT FOR CONSTRUCTION

DATE:	NOVEMBER 7, 2013
DESIGN BY:	KJM
DRAWN BY:	KJM
REVIEW BY:	
PROJECT NO.:	RETREAT - PH 2
ISSUE:	2nd County Submittal

REVISIONS:	
•	
•	
•	
•	

SHEET TITLE:
**MTN RIDGE DR
CROSS SECTIONS**

SHEET NUMBER:
C501

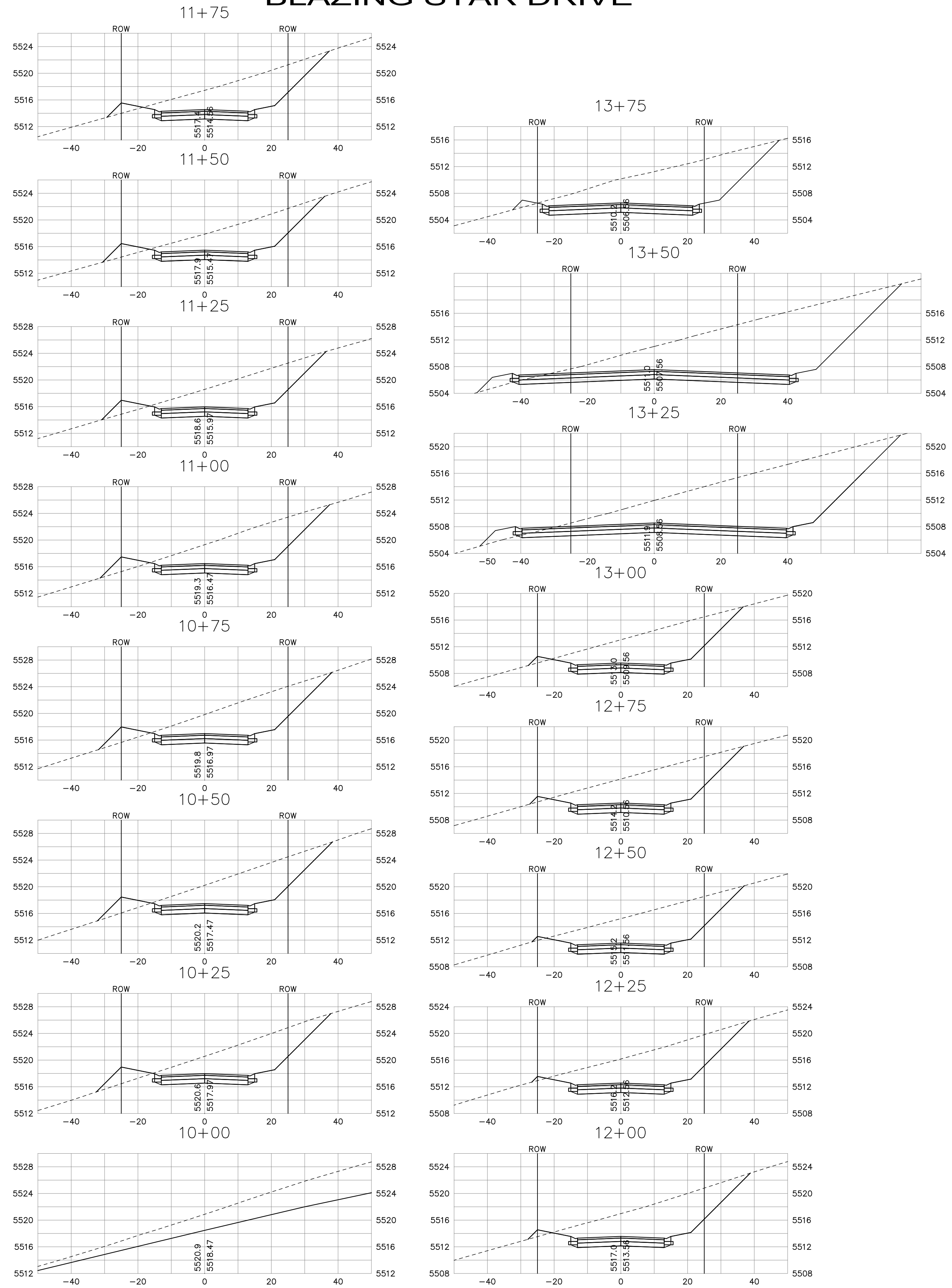


SCALE
1"=20' HORIZONTAL
1"=10' VERTICAL

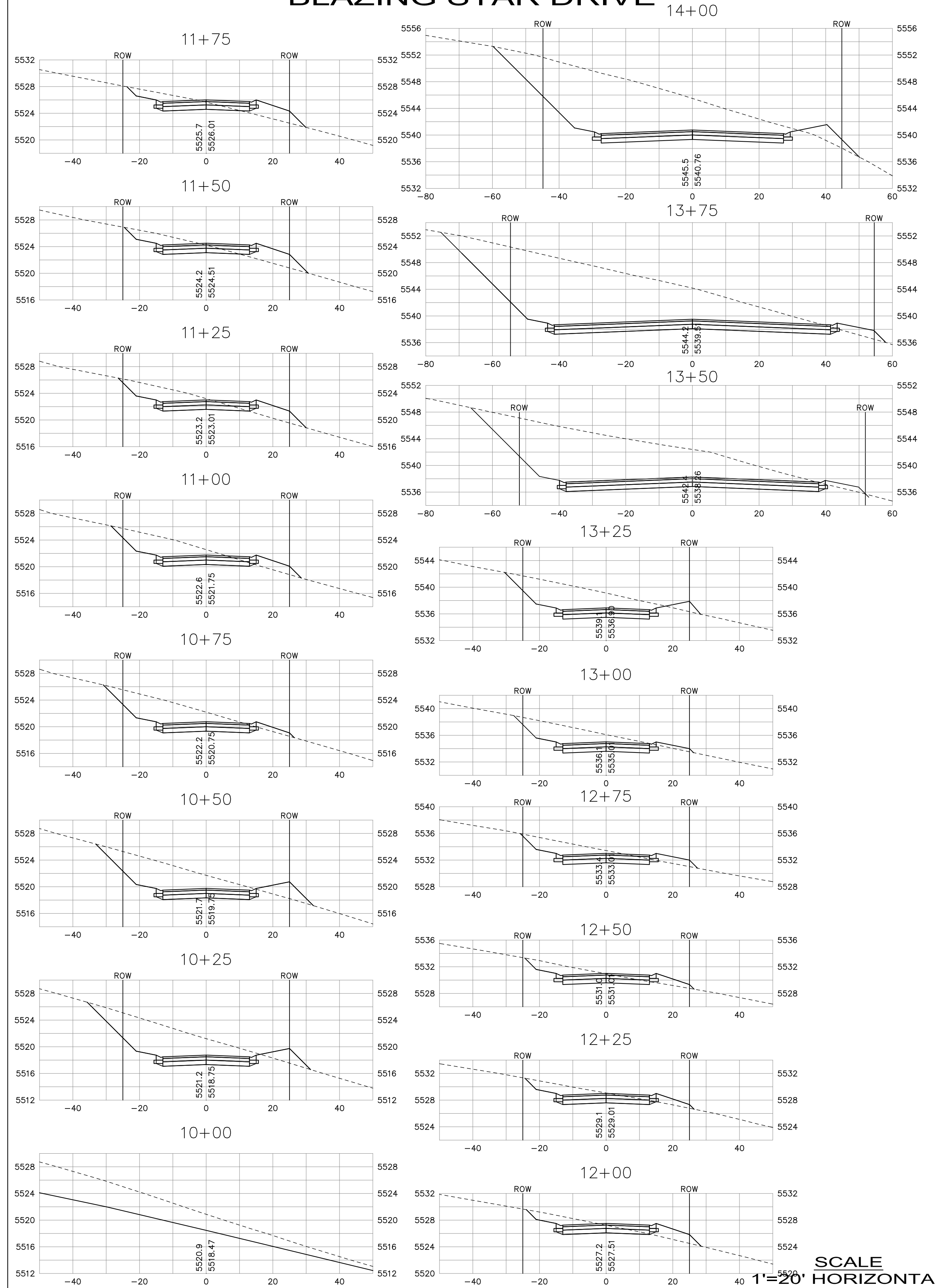
path: M:\01_MDS101_Eng\1997_LDC\Wolf_Creek\04_Design\RETREAT_PH2\ file names: C501-RC-PH2-XSEC.dwg | plot date: November 06, 2013 | plotted by: owner

path: M:\01_MDS\01_Eng\997_LDS\Wolf_Creek\04_Design\RETREAT_PH21
 file name: C501-R-RETREAT-SEC.dwg | plot date: November 07, 2013 | plotted by: owner

BLAZING STAR DRIVE

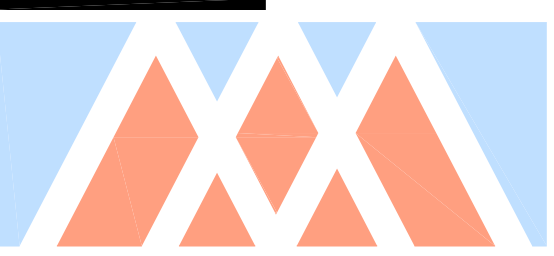


BLAZING STAR DRIVE



LEWIS HOMES, INC.
 5677 EAST ELK HORN DRIVE
 EDEN, UT 84310

THE RETREAT - PHASE 2



MULHOLLAND DEVELOPMENT SOLUTIONS
 MAIL: P.O. BOX 680925, PARK CITY, UTAH 84068
 VOICE: 435.901.2940, 435.615.6550 - office, 435.615.6546 - fax
 IN PERSON: 5180 N. SILVER SPRINGS ROAD, PARK CITY, UTAH 84098
 krlslang@mulholland-development.com

NOT FOR CONSTRUCTION

DATE:	NOVEMBER 7, 2013
DESIGN BY:	KJM
DRAWN BY:	KJM
REVIEW BY:	
PROJECT NO:	RETREAT - PH 2
ISSUE:	2nd County Submittal
REVISIONS:	

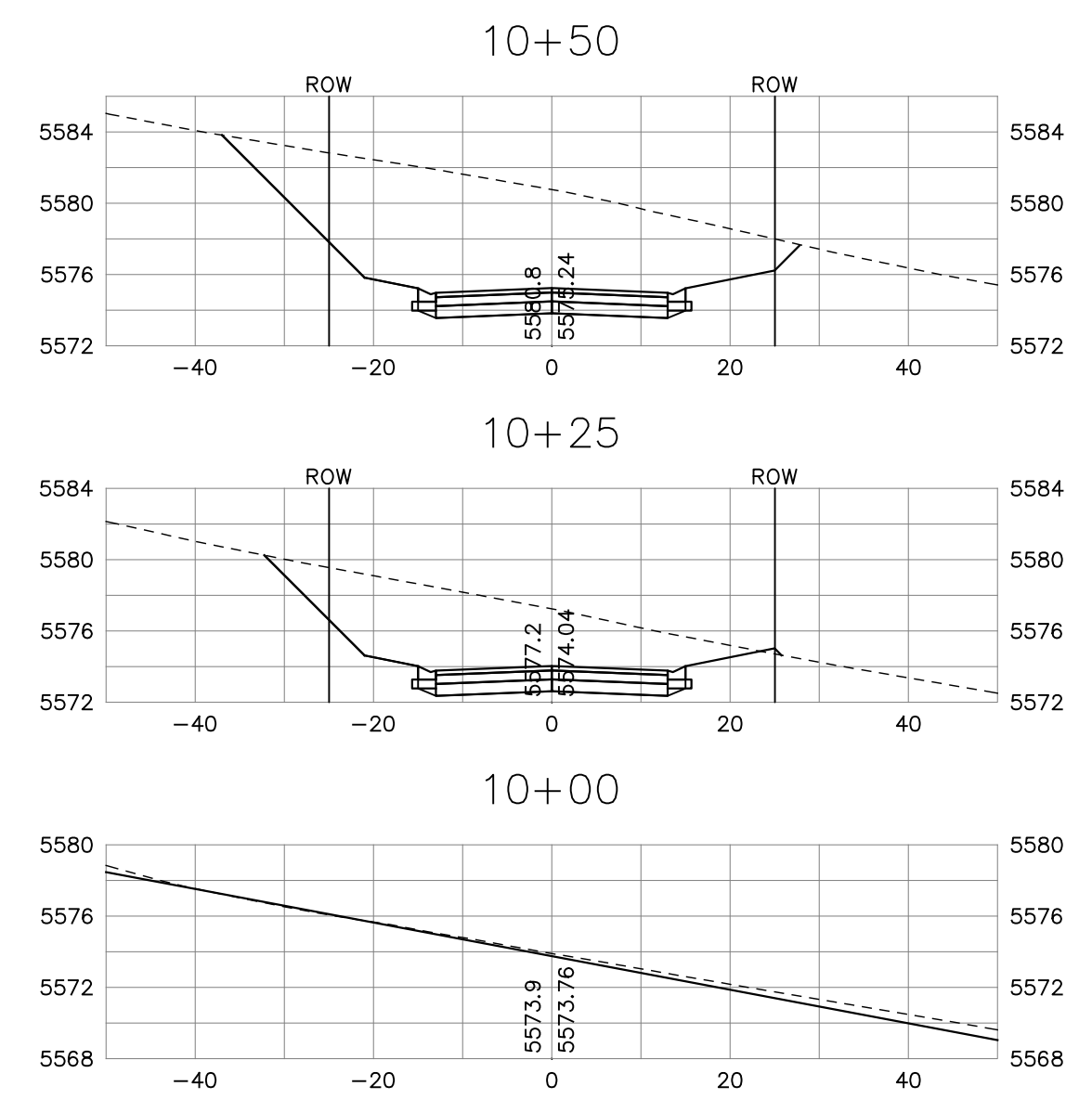
SHEET TITLE:
BLAZING STAR DRIVE CROSS SECTIONS

SHEET NUMBER:
C502

SCALE
 1"=20' HORIZONTAL
 1"=10' VERTICAL

path: M:\01_MDS\01_Eng\997_LDS\Wolf_Creek\04_Design\RETREAT_PH2\ file names: C501-RS-PH2-XSEC.dwg | plot date: November 07, 2013 | plotted by: owner

YARROW DRIVE

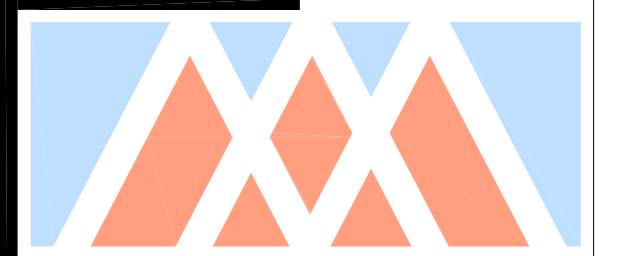


SCALE
1"=20' HORIZONTAL
1"=10' VERTICAL



LEWIS HOMES, INC.
5677 EAST ELKHORN DRIVE
EDEN, UT 84310

THE RETREAT - PHASE 2

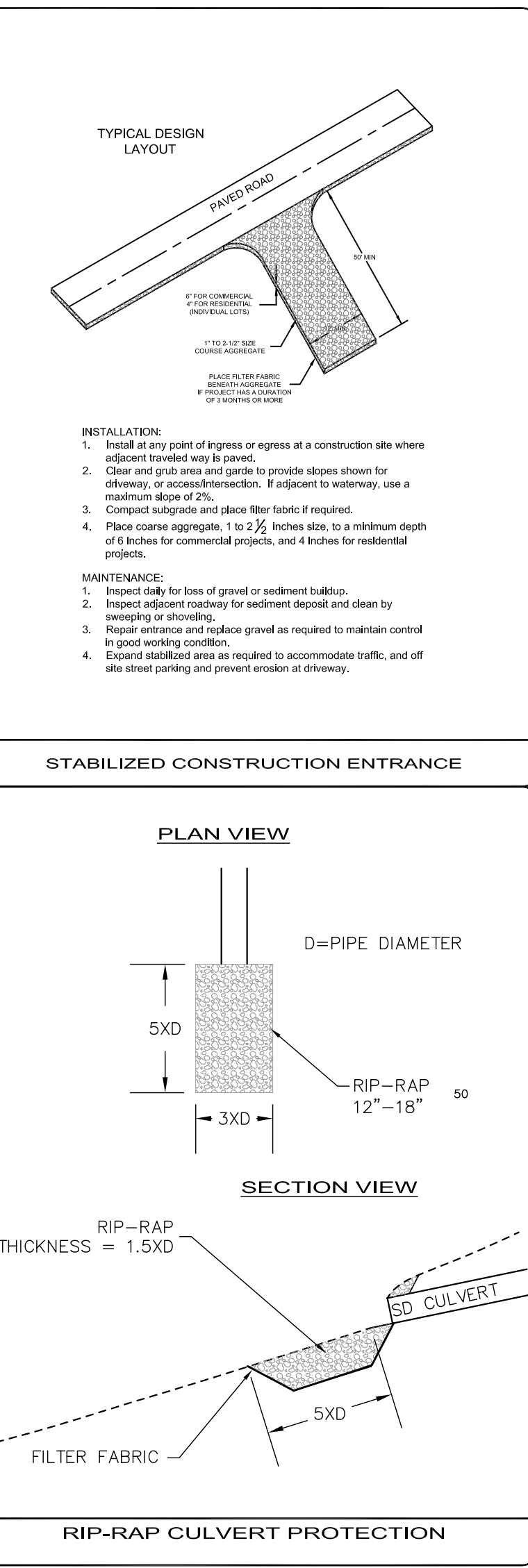
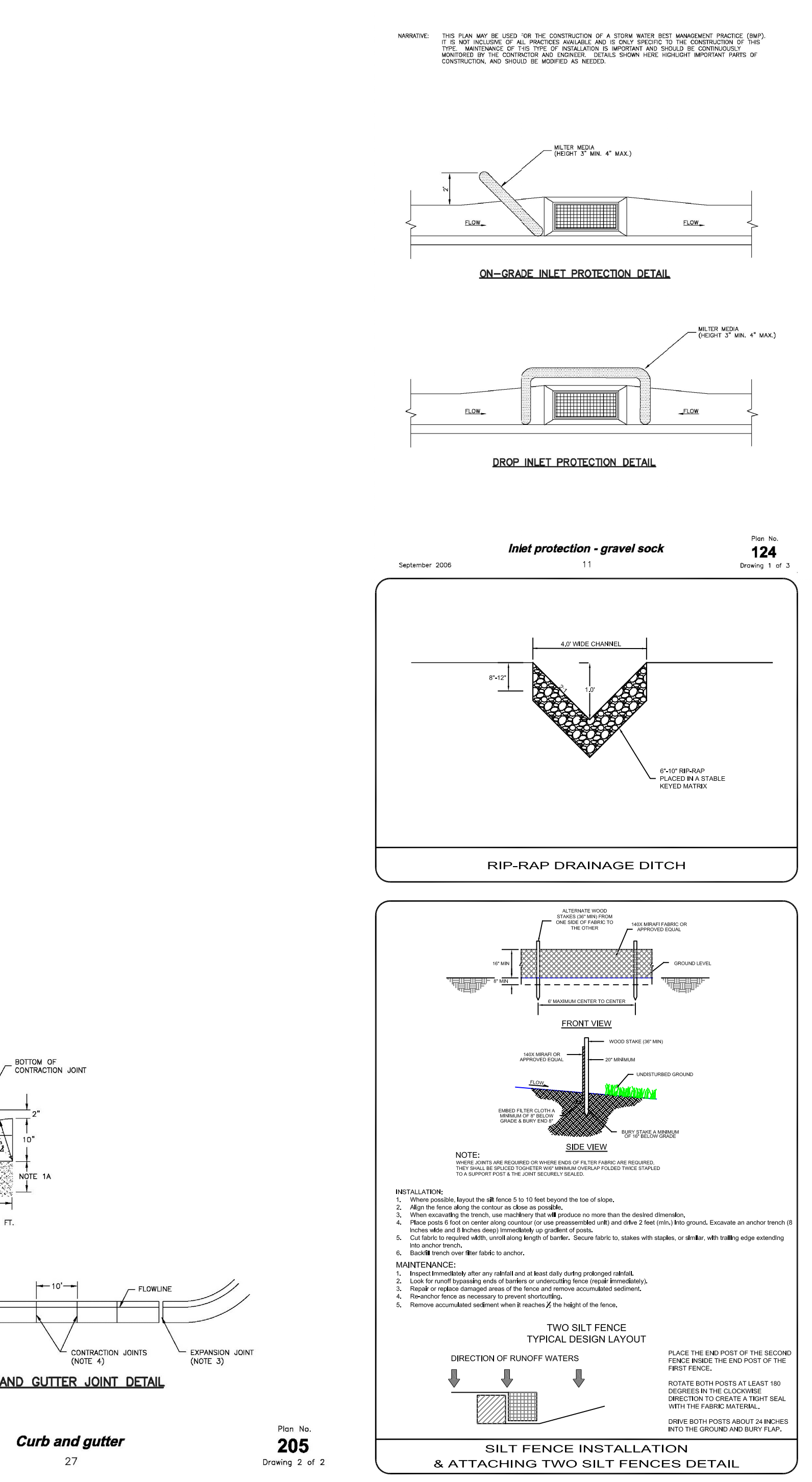
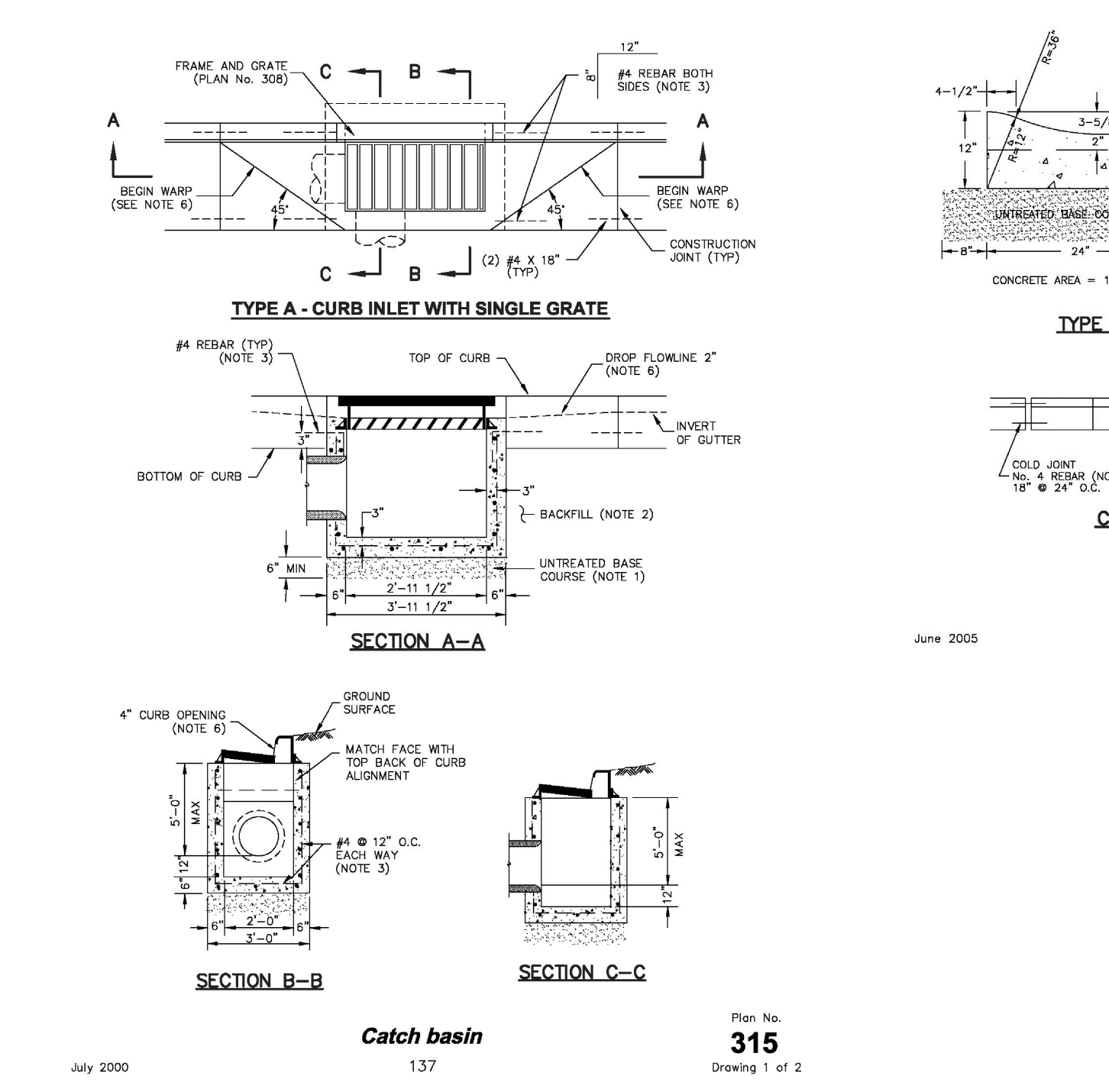
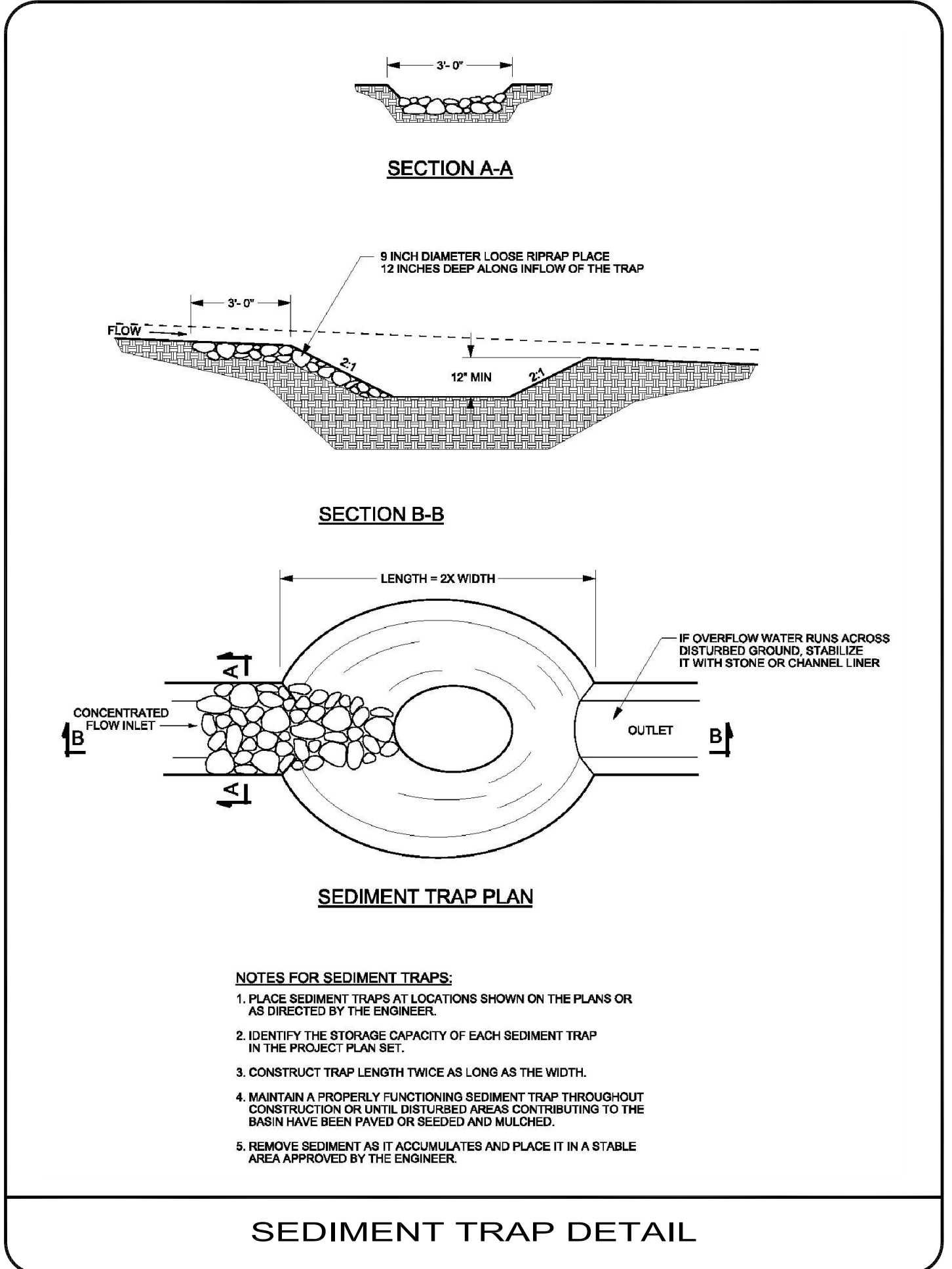
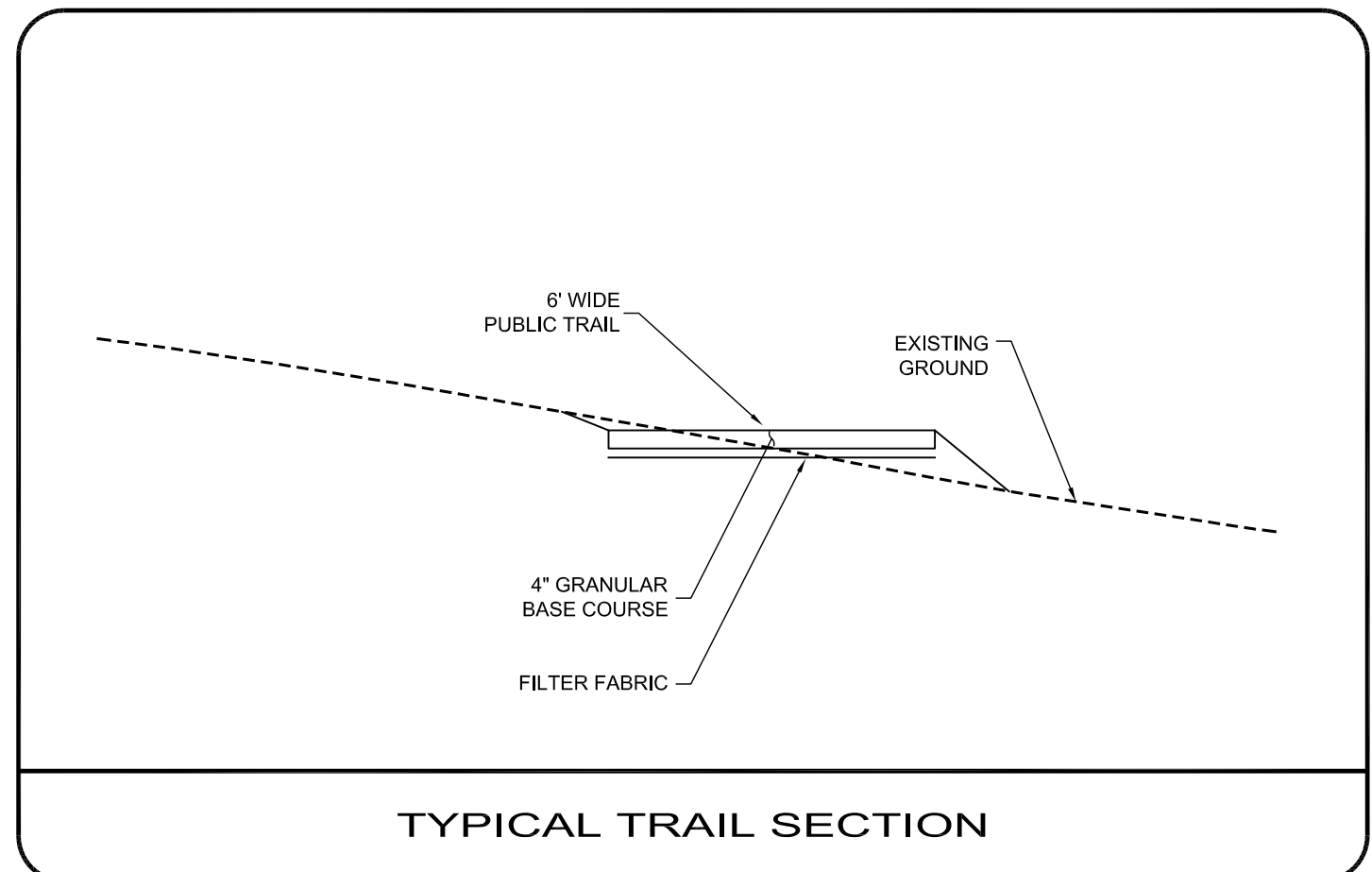
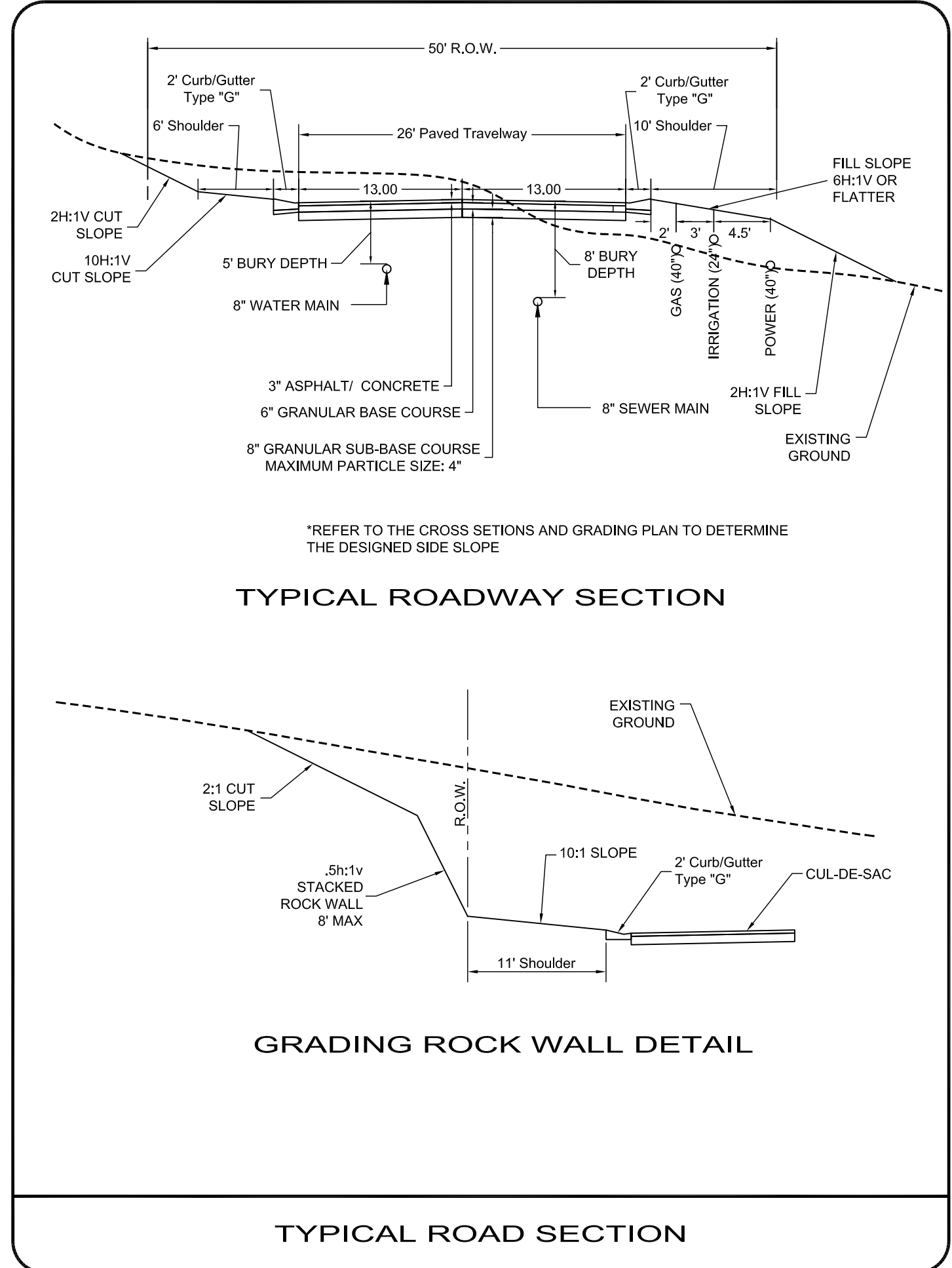


MULHOLLAND
DEVELOPMENT SOLUTIONS
MAIL: P.O. BOX 680925
PARK CITY, UTAH 84068
VOICE: 435.901.2940 - cell
435.615.6550 - office
435.615.6546 - fax
IN PERSON: 5160 N. SILVER SPRINGS ROAD
PARK CITY, UTAH 84098
kristlan@mulholland-development.com

NOT FOR
CONSTRUCTION

DATE:	NOVEMBER 7, 2013
DESIGN BY:	KJM
DRAWN BY:	KJM
REVIEW BY:	
PROJECT NO:	RETREAT - PH 2
ISSUE:	2nd County Submittal
REVISIONS:	
SHEET TITLE:	YARROW DRIVE CROSS SECTIONS
SHEET NUMBER:	C503

path: M:\01_MDS\010_Eng\1997_LDS\Wolf Creek\04_Design\RETREAT_PH21
 file name: C601-R-CPH2-DTLs.dwg | plot date: November 06, 2013 | plotted by: Kristian



LEWIS HOMES

THE RETREAT - PHASE 2

LEWIS HOMES, INC.
 5677 EAST ELKHORN DRIVE
 EDEN, UT 84310

MULHOLLAND DEVELOPMENT SOLUTIONS

MAIL VOICE:
 P.O. BOX 680925 435.901.2940 - cell
 PARK CITY, UTAH 84068 435.615.6550 - office
 435.615.6546 - fax

IN PERSON
 5100 N. SILVER SPRINGS ROAD
 PARK CITY, UTAH 84098

kristian@mulholland-development.com

NOT FOR CONSTRUCTION

DATE: NOVEMBER 7, 2013

DESIGN BY: KJM

DRAWN BY: KJM

REVIEW BY:

PROJECT NO: RETREAT - PH 2

ISSUE: 2nd County Submittal

REVISIONS:

SHEET TITLE: STANDARD DETAILS

SHEET NUMBER: C601

Know what's below. **811**
 Call 811 before you dig.
 BLUE STAKES OF UTAH
 UTILITY NOTIFICATION CENTER, INC.
 www.bluestakes.org
 1-800-662-4111