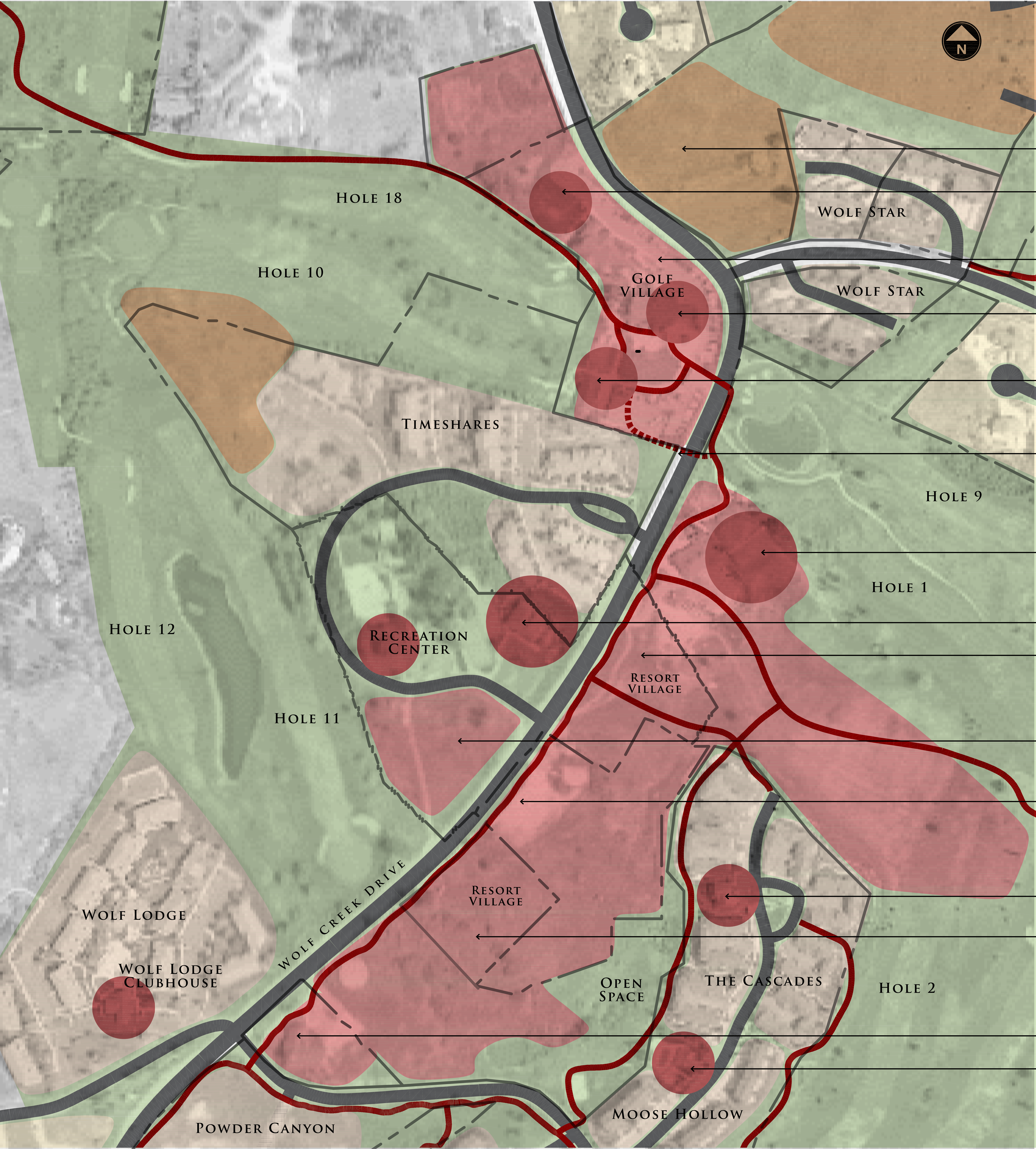






# WOLF CREEK RESORT



## LAND USE LEGEND

EXISTING DEVELOPMENT  
SINGLE FAMILY

EXISTING DEVELOPMENT  
MULTI FAMILY

FUTURE DEVELOPMENT  
SINGLE FAMILY

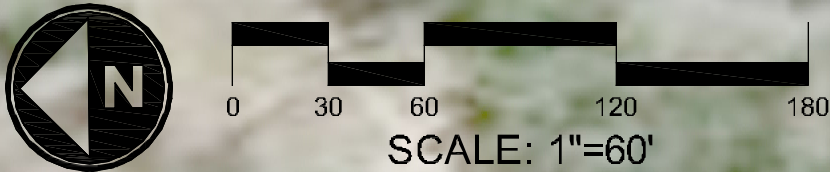
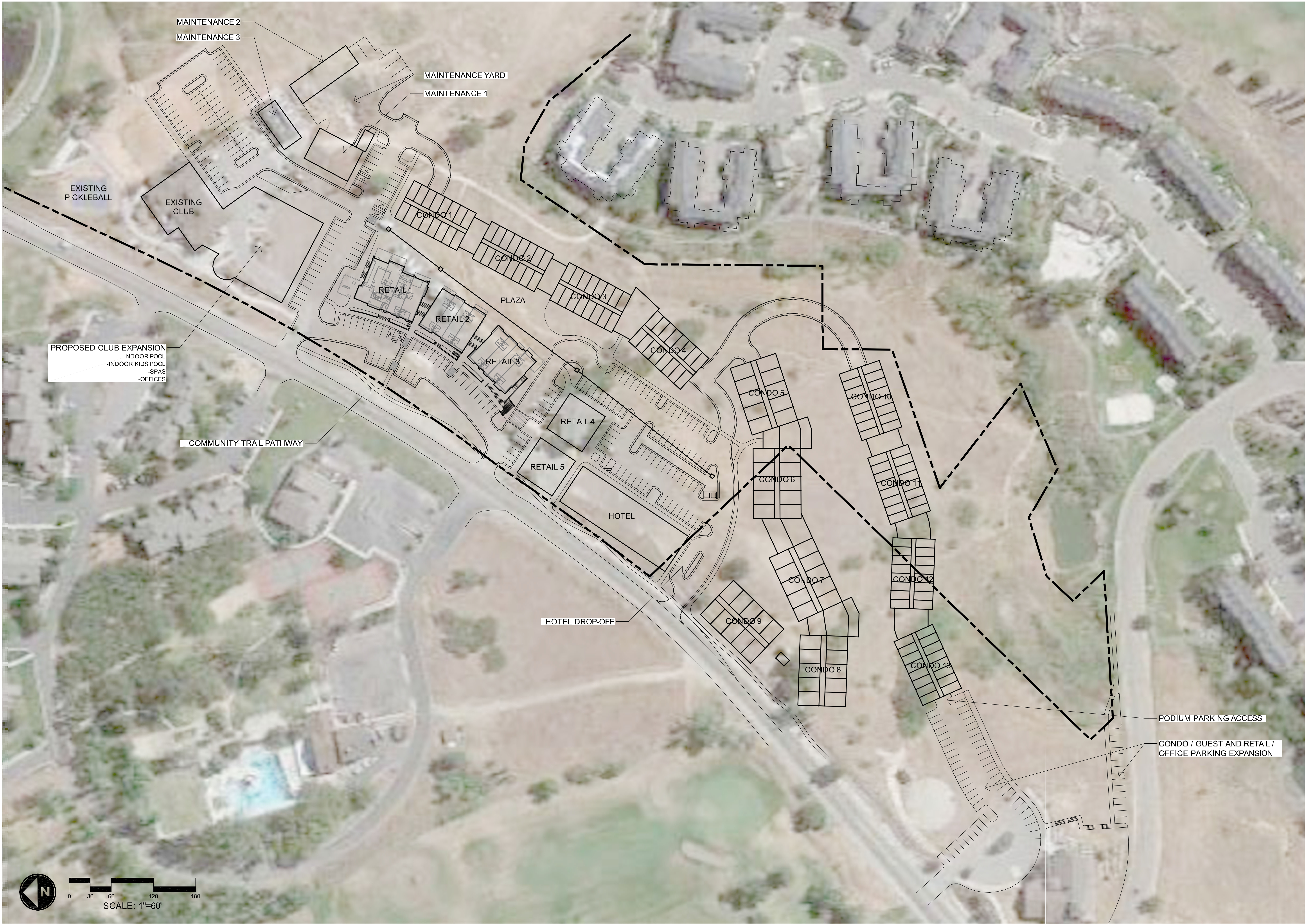
FUTURE DEVELOPMENT  
MULTI FAMILY

FUTURE DEVELOPMENT  
RESORT CORE

- FUTURE MULTI FAMILY
- WOLF CREEK CLUBHOUSE/POWDER HUB EXPANSION
- EXISTING PINEVIEW LODGE
- EXISTING POWDER HUB AND RESTAURANT
- GOLF CLUB, PRACTICE GREEN, EVENT TENT AND CART STORAGE
- POTENTIAL FUTURE TRAIL UNDERPASS CONNECTING RESORT AND GOLF VILLAGES
- EXISTING FITNESS CLUB AND RESORT MAINTENANCE FACILITY
- EXISTING WORLDMARK RECREATION FACILITY AND CLUB
- FUTURE CONDOMINIUM HOTEL, RETAIL VILLAGE AND RESORT PARKING
- WOLF CREEK WATER AND SEWER IMPROVEMENT DISTRICT
- RESORT TRAIL SYSTEM
- THE CASCADES CLUBHOUSE
- FUTURE CONDOMINIUM HOTEL, RETAIL VILLAGE AND RESORT PARKING
- EXISTING WELCOME CENTER
- MOOSE HOLLOW CLUBHOUSE

THE INFORMATION AND/OR RENDERINGS HEREIN ARE FOR THE SOLE PURPOSE OF DEPICTING A POSSIBLE USE OF THE PROPERTIES. FOR DETAILS OF EXISTING DEVELOPED PROPERTIES, REFER TO THE RECORDED PLATS AT WEBER COUNTY. THE OWNERS OF THE PROPERTIES AND THEIR SUCCESSORS AND ASSIGNS RESERVE THE RIGHT TO MAKE ZONING, DEVELOPMENT AND/OR USE CHANGES FOR ANY PART(S) OF THE PROPERTIES.





# WOLF CREEK RESORT CORE

## CONCEPTUAL PLAN

DATE:	JANUARY 2022
PROJECT:	000.0000.00
DRAWN BY:	TK
REVIEW BY:	TK
VERSION:	
REVISIONS:	

SHEET TITLE:  
**SITE PLAN**

SHEET NUMBER:  
**L1.0**



**Wolf Creek Resort**  
Zoning Development Agreement Amendment  
Master Planned Development Overlay Zone  
January 2022

**The Exchange**

**Resort Commercial**

