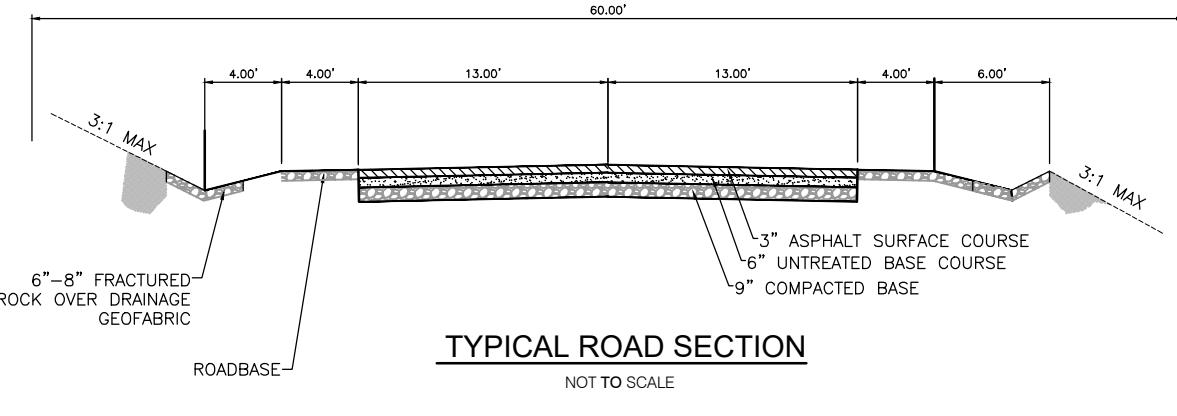
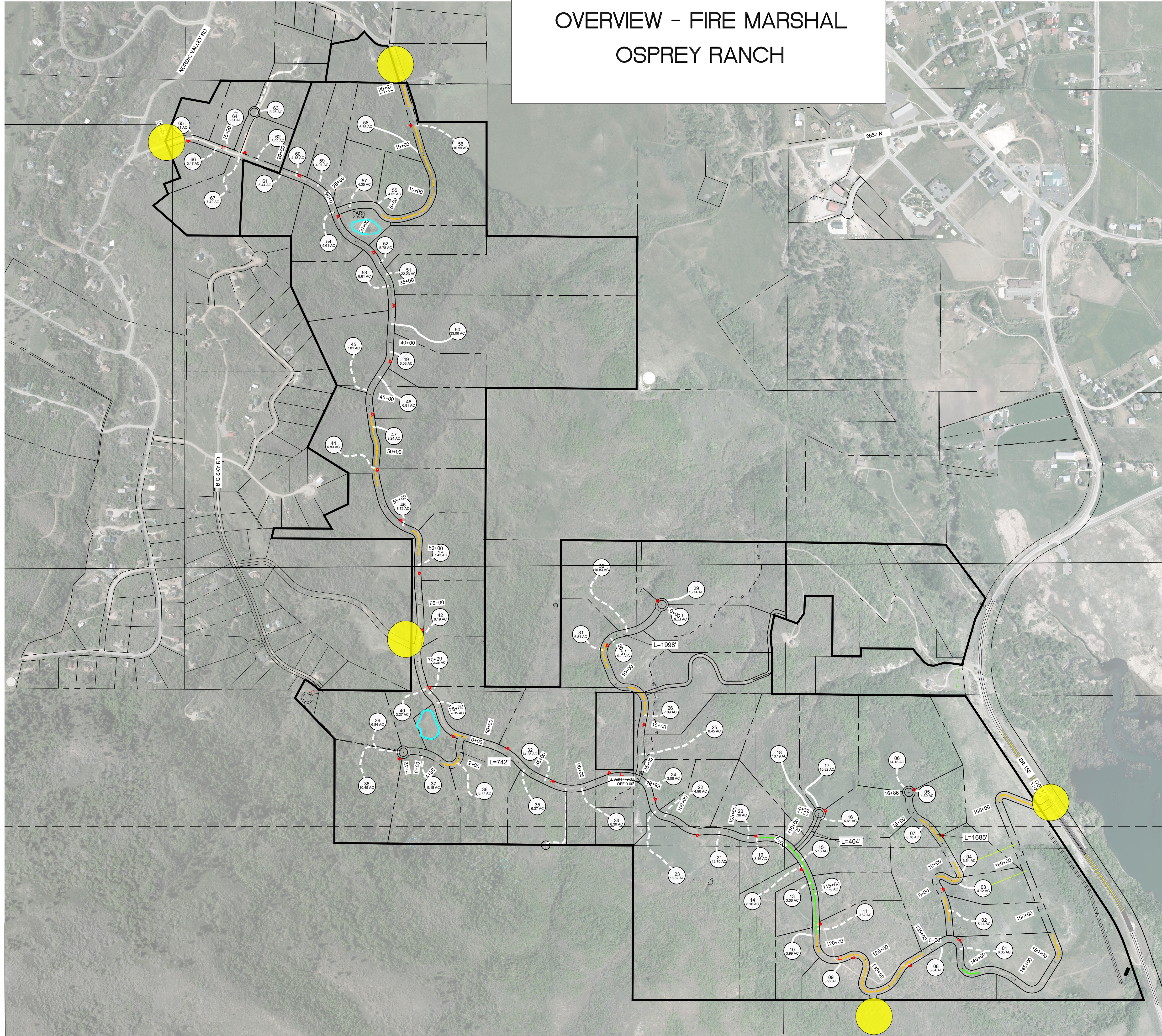
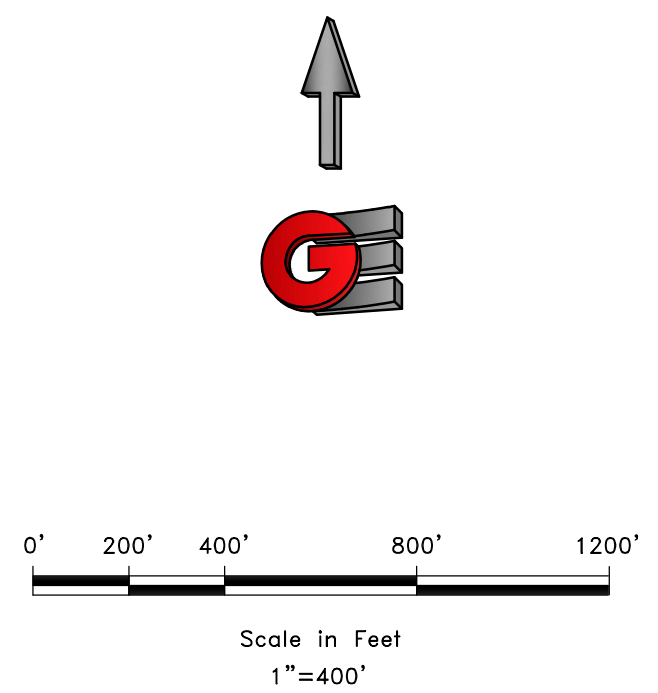


OVERVIEW - FIRE MARSHAL OSPREY RANCH



- PROPOSED FIRE HYDRANT
- ROAD PROFILES 10-11%
- ROAD PROFILES 11-12%
- CONNECTION TO EXISTING ROAD

Road	Road slope	10-11%		11-12%		Total Length
		Total Length	11-12%	Total Length	11-12%	
Main Road	7.93%	18.73%	1269.7	2998.05	16007.84	
All Roads	5.56%	26.15%	1269.7	7242.34	22842.92	



REVISIONS	DATE	DESCRIPTION

OVERVIEW - FIRE MARSHAL
OSPREY RANCH
UT-158
EDEN, WEBER, UTAH

**GARDNER
ENGINEERING**

CIVIL • LAND PLANNING
MUNICIPAL • LAND SURVEYING

5150 SOUTH 375 EAST OGDEN, UT
OFFICE: 801-476-0202 FAX: 801-476-0066

EX1

04/12/21 - LEWIS, HOWES & SONS - OSPREY RANCH, UTAH OSPREY FIRE MARSHAL SHEET - ADDED ROAD - KAN, DWG

SCALE: 1"=400'
 DATE: 6-22-21
 DESIGNER: KAN
 DRAWN: KAN
 CHECKED: RC

DWG: