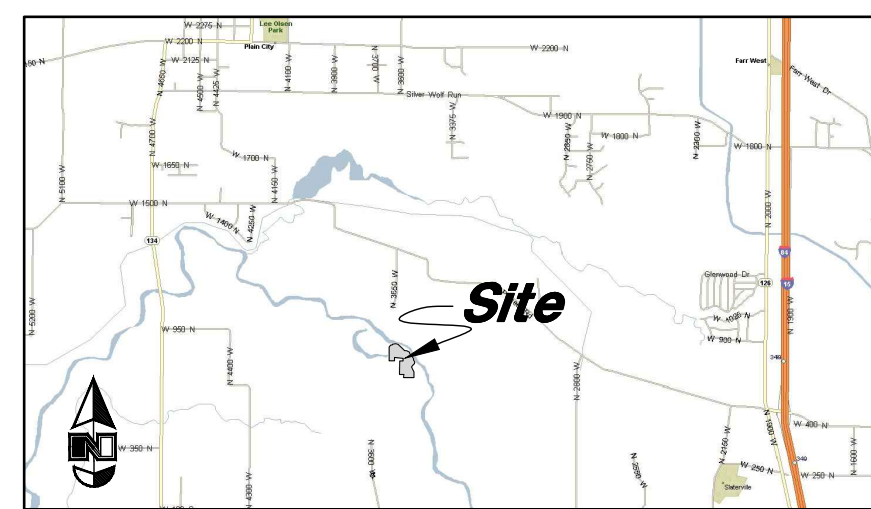


Tarakee Farm® - No. 1

A PRUD Subdivision

A part of the Southeast Quarter of Section 9, T6N, R2W, SLB&M, U.S. Survey
Weber County, Utah
November 2021



VICINITY MAP (Not to Scale)

NARRATIVE

This Subdivision Plat was requested by Mr. Brad Blanch for the purpose of creating forty (40) residential Lots and five (1) Open Space Parcel.

Brass Cap Monuments were found at the Southeast Corner and the South Quarter Corner of Section 17, T6N, R2W, SLB&M.

A line bearing North 89°05'07" West between these two monuments was used as the Basis of Bearings.

Property Corners were monumented as depicted on this plat.

If Curb and Gutter is installed, "Rivets will be set in the Top Back of Curb on the extension of the Property Line.

If Curb and Gutter is deferred, the front Property Corners will be required to have Rebar and Cap set.

SEE ROS# \_\_\_\_\_ Filed with the Weber County Surveyor's Office for Overall Boundary Retracement Details.

DESCRIPTION

A part of the Southeast Quarter of Section 9, Township 6 North, Range 2 West, Salt Lake Base and Meridian, Beginning at the Northwest corner of Lot 1 McFarland Subdivision (Weber County Recorder Entry # 1672850) said point being 397.19 feet South 89°26'19" East along the Section line and 1,049.27 feet North 00°33'41" East from the South Quarter corner of said Section, and running thence North 89°03'30" West 17.49 feet along the North Line of said McFarland Subdivision to the Easterly line of the Richard and Carisa Hipwell property (Parcel #15-028-0054); thence North 00°46'31" East 55.61 feet along said Easterly line; thence South 89°13'13" East 64.06 feet to a point of curvature; thence Easterly along the arc of a 74.97 foot radius curve to the left a distance of 54.39 feet (Central Angle equals 41°34'11" and Long Chord bears North 69°59'42" East 53.21 feet); thence North 49°12'36" East 448.50 feet to a point of curvature; thence Northeasterly along the arc of a 175.00 foot radius curve to the left a distance of 47.74 feet (Central Angle equals 15°37'45" and Long Chord bears North 41°23'44" East 47.59 feet) to a point of compound curvature thence Northerly along the arc of a 10.00 foot radius curve to the left a distance of 15.75 feet (Central Angle equals 90°15'26" and Long Chord bears North 11°32'52" West 14.17 feet); thence along a line non-tangent to said curve, North 33°19'25" East, a distance of 50.00 feet; thence South 56°40'35" East 233.49 feet to a point of curvature; thence Easterly along the arc of a 375.00 foot radius curve to the left a distance of 227.11 feet (Central Angle equals 34°42'00" and Long Chord bears South 74°01'35" East 223.66 feet); thence North 88°37'25" East 53.32 feet to a point of curvature; thence Northeasterly along the arc of a 75.00 foot radius curve to the left a distance of 107.01 feet (Central Angle equals 81°45'10" and Long Chord bears North 47°44'49" East 98.16 feet); thence along a line non-tangent to said curve, South 83°07'46" East, a distance of 50.00 feet to the point of curve of a non-tangent curve, of which the radius point lies North 83°07'46" West; thence Southerly along the arc of a 125.00 foot radius curve to the right a distance of 4.82 feet (Central Angle equals 02°12'30" and Long Chord bears South 07°58'29" West 4.82 feet); thence along a line non-tangent to said curve, South 73°49'55" East, a distance of 79.81 feet to the point of curve of a non-tangent curve, of which the radius point lies North 48°41'54" East; thence Southeasterly along the arc of a 3,551.68 foot radius curve to the left a distance of 277.57 feet (Central Angle equals 04°28'40" and Long Chord bears South 43°32'26" East 277.50 feet) to a point of compound curvature thence Easterly along the arc of a 15.00 foot radius curve to the left a distance of 11.81 feet (Central Angle equals 45°05'36" and Long Chord bears South 68°19'33" East 11.50 feet) to the point of curve of a non-tangent curve, of which the radius point lies South 00°55'17" East; thence Southeasterly along the arc of a 179.65 foot radius curve to the right a distance of 297.40 feet (Central Angle equals 94°51'02" and Long Chord bears South 43°29'46" East 264.59 feet); thence along a line non-tangent to said curve, South 01°26'04" West, 292.07 feet; thence North 89°04'28" West 1,056.69 feet to the Southeast corner of said McFarland Subdivision; thence two (2) courses along the East and North Boundaries of said Subdivision as follows (1) North 00°56'30" East 362.32 feet; and (2) North 89°03'30" West 438.81 feet to the point of curve of a non-tangent curve, of which the radius point lies South 30°56'09" East; thence Southwesterly along the arc of a 88.67 foot radius curve to the left a distance of 89.65 feet (Central Angle equals 57°55'36" and Long Chord bears South 30°06'03" West 85.88 feet) to the East right of way line of 3600 West Street as delineated on said Subdivision; thence North 00°49'22" East 75.00 feet along said East right of way line to the POINT OF BEGINNING.
Containing 17.704 acres, more or less.

PROPERTY LINE CURVE DATA table with columns: Curve, Delta, Radius, Length, Chord, Chord Bearing. Rows C1 to C20.

PROPERTY LINE CURVE DATA table with columns: Curve, Delta, Radius, Length, Chord, Chord Bearing. Rows C21 to C40.

PROPERTY LINE CURVE DATA table with columns: Curve, Delta, Radius, Length, Chord, Chord Bearing. Rows C41 to C60.

PROPERTY LINE CURVE DATA table with columns: Curve, Delta, Radius, Length, Chord, Chord Bearing. Rows C61 to C80.

PROPERTY LINE CURVE DATA table with columns: Curve, Delta, Radius, Length, Chord, Chord Bearing. Rows C81 to C100.

PROPERTY LINE CURVE DATA table with columns: Curve, Delta, Radius, Length, Chord, Chord Bearing. Rows C101 to C120.

LINE DATA table with columns: Line, Bearing, Length. Rows L1 to L108.

CENTERLINE CURVE DATA table with columns: Curve, Delta, Radius, Length, Chord, Chord Bearing. Rows C201 to C210.

WEBER COUNTY SURVEYOR

I hereby certify that the Weber County Surveyor's Office has reviewed this plat for mathematical correctness, section corner data, and for harmony with lines and monument on record in County Offices.

WEBER COUNTY ATTORNEY

I have examined the financial guarantee and other documents associated with this subdivision plat, and in my opinion they conform with the County Ordinance applicable thereto and now in force and effect.

ENGINEER: Great Basin Engineering Inc, c/o Andy Hubbard, 5746 South 1475 East Suite 200, Ogden, Utah 84405, (801) 394-4515

DEVELOPER: Tarakee Investments, LLC, c/o Brad Blanch, 1060 East 3400 North North Ogden, UT 84414, (801) 688-8365



SURVEYOR'S CERTIFICATE

I, Andy Hubbard, do hereby certify that I am a Professional Land Surveyor in the State of Utah, and that I hold Certificate No. 6242920 in accordance with Title 58, Chapter 22, of the Professional Engineers and Land Surveyors Licensing Act.

Signed this 11/09/2021 day of November, 2021. Andy Hubbard, Surveyor No. 6242920

11/09/2021 4:35:48 PM OWNERS DEDICATION

We the undersigned owners of the herein described tract of land, do hereby set apart and subdivide the same into lots as shown on the plat and name said tract Tarakee Farms No. 1 - A PRUD Subdivision and do hereby dedicate and grant to Weber County a perpetual right and easement on and over the Open Space parcels for agriculture preservation easements to guarantee to Weber County that the Open Space parcels remain open and undeveloped except for approved agricultural, recreational, and open space purposes except to be used and maintained by the owner of said parcel(s) for approved agricultural purposes, and also do grant and dedicate a perpetual right and easement over, upon and under the lands designated herein as Private Streets and/or public utility easements, the same to be used for the maintenance and operation of Sanitary Sewer lines and Structures, Storm Drainage Lines and Structures and/or public utility service lines and storm drainage facilities, whichever is applicable as may be authorized by the governing authority, with no buildings or structures being erected within such easements.

We also dedicate and reserve unto ourselves, their heirs, their grantees and assigns, a right-of-way to be used in common with all others within said Subdivision (and those adjoining Subdivisions that may be subdivided by the undersigned owners, their successors, or assigns) on, over and across all those portions or parts of said tract of land designated on said plat as Private Streets (Private rights-of-way) as access to the individual lots, to be maintained by Tarakee Farms, Inc, their grantees, successors, or assigns.

We also do hereby dedicate, grant and convey to Tarakee Farm, Inc, the Parcels referred to as Parcel A to be used as Agri-tourism events, also dedicate and grant a perpetual right and easement over, upon and under the lands designated herein as Parcel A to be used as Agri-tourism, for Storm Water Detention, Landscaping, and Secondary Water facility purposes. The same to be used for the maintenance and operation of storm drainage facilities, Secondary Water facilities as applicable as may be authorized by the governing authority, with no residential buildings or structures being erected within such parcels unless otherwise defined in the Codes, Covenants, and Restrictions (CC&R's) for this development.

- X -

X - Title

ACKNOWLEDGMENT

State of Utah County of }

The foregoing instrument was acknowledged before me this 11/09/2021 day of November, 2021 by X

Residing At: A Notary Public commissioned in Utah Commission Number: Commission Expires: Print Name

AGRICULTURAL NOTE

Agriculture is the preferred use in the agriculture zones. Agricultural operations as specified in the Land Use Code for a particular zone are permitted at any time including the operation of farm machinery and no allowed agricultural use shall be subject to restrictions on the basis that it interferes with activities of future residents of this subdivision.

WEBER COUNTY ENGINEER

I hereby certify that the required public improvement standards and drawings for this subdivision conform with County standards and the amount of the financial guarantee is sufficient for the installation of these improvements.

WEBER COUNTY PLANNING COMMISSION APPROVAL

This is to certify that this subdivision plat was duly approved by the Weber County Planning Commission. Signed this 11/09/2021 day of November, 2021.

Chairman, Weber County Planning Commission

Weber County Engineer

WEBER COUNTY COMMISSION ACCEPTANCE

This is to certify that this subdivision plat, the dedication of streets and other public ways and financial guarantee of public improvements associated with this subdivision, thereon are hereby approved and accepted by the Commissioners of Weber County, Utah. Signed this 11/09/2021 day of November, 2021.

Chairman, Weber County Commission

Attest: Title:

TENTATIVE FINAL

Sheet 1 of 2

WEBER COUNTY RECORDER

ENTRY NO. FEE PAID RECORDED FILED FOR RECORD AND AT RECORDED IN BOOK OF OFFICIAL RECORDS, PAGE RECORDED FOR

WEBER COUNTY RECORDER

BY: DEPUTY

# Terakee Farm® PRUD No. 1

A PRUD Subdivision  
 A part the Southeast Quarter of Section 9, T6N, R2W, SLB&M, U.S. Survey  
 Weber County, Utah  
 November 2021

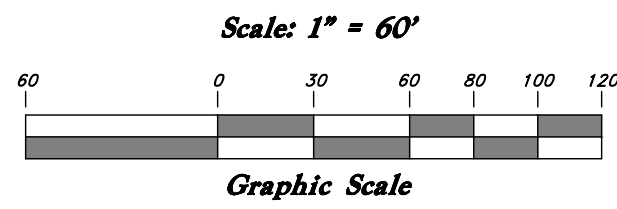
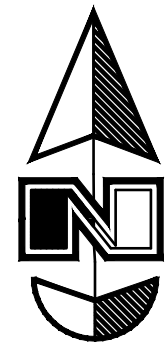
Northeast Corner of Section 9,  
 T6N, R2W, SLB&M, U.S. Survey

Northeast Corner of Section 9,  
 T6N, R2W, SLB&M, U.S. Survey

(S 89°15'28" E W.C.S.)

(2640.03' W.C.S.)

Center of Section 9,  
 T6N, R2W, SLB&M, U.S. Survey



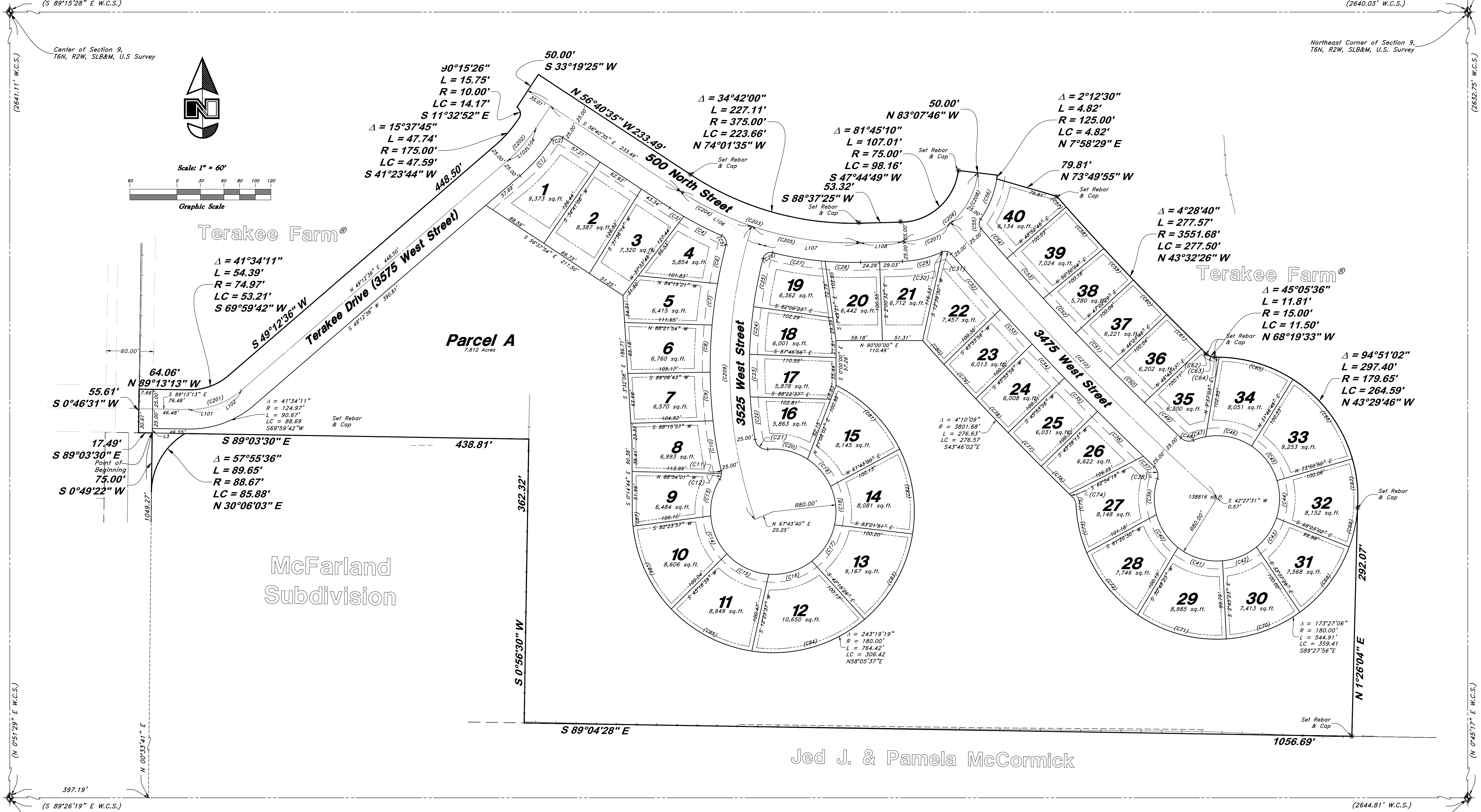
Terakee Farm®

Terakee Farm®

McFarland  
 Subdivision

Jed J. & Pamela McCormick

Parcel A  
 7.812 Acres



### AGRICULTURAL NOTE

Agriculture is the preferred use in the agriculture zones. Agricultural operations as specified in the Land Use Code for a particular zone are permitted at any time including the operation of farm machinery and no allowed agricultural use shall be subject to restrictions on the basis that it interferes with activities of future residents of this subdivision.

### NOTES:

- 10' wide Public Utility and Drainage Easements (P.U.&D.E.) on front lot lines as indicated by dashed lines except as otherwise shown.
- All Lots will have a 20' Frontage and 5' Side (20' Corner) and Rear Yard Building Setback except as otherwise shown.

TENTATIVE FINAL

**GREAT BASIN ENGINEERING**  
 5746 SOUTH 1475 EAST OGDEN, UTAH 84403  
 MAIN (801) 394-4515 S.L.C. (801) 521-0222 FAX (801) 392-7544  
 WWW.GREATBASINENGINEERING.COM

ENGINEER:  
 Great Basin Engineering Inc  
 c/o Andy Hubbard  
 5746 South 1475 East Suite 200  
 Ogden, Utah 84405  
 (801) 394-4515

DEVELOPER:  
 Terakee Investments, LLC  
 c/o Brad Blanch  
 1020 East 3400 North  
 North Ogden, UT 84414  
 (801) 668-8565

Sheet 2 of 2

WEBER COUNTY RECORDER

ENTRY NO. \_\_\_\_\_ FEE PAID \_\_\_\_\_  
 FILED FOR RECORD AND  
 RECORDED \_\_\_\_\_ AT \_\_\_\_\_  
 IN BOOK \_\_\_\_\_ OF OFFICIAL  
 RECORDS, PAGE \_\_\_\_\_ RECORDED  
 FOR \_\_\_\_\_

WEBER COUNTY RECORDER

BY: \_\_\_\_\_ DEPUTY