

UNLESS A PROFESSIONAL SEAL WITH SIGNATURE AND DATE IS AFFIXED, THIS DOCUMENT IS PRELIMINARY AND IS NOT INTENDED FOR CONSTRUCTION, RECORDING PURPOSES, OR IMPLEMENTATION

C.W. URBAN

THE DESIGNS SHOWN AND DESCRIBED HEREIN INCLUDING ALL TECHNICAL DRAWINGS, GRAPHIC REPRESENTATIONS & MODELS, THEREOF, ARE PROPRIETARY & CAN NOT BE COPIED, DUPLICATED, OR COMMERCIALY EXPLOITED IN WHOLE OR IN PART WITHOUT THE SOLE AND EXPRESS WRITTEN PERMISSION FROM CW URBAN

PROJECT
theBASIN
Old Snow Basin Road

REVISIONS:

TITLE:
Floor Plan - Bsmt

SHEET:
A101

ISSUE DATE: 12.11.2020

Design Development



1 Floor Bsmt
1/4" = 1'-0"

TOTAL SQUARE FOOTAGE	
Name	Area
BSMT	1,185 SF
	1,185 SF
LEVEL 1	1,384 SF
LEVEL 2	1,595 SF
	2,979 SF
Grand total	4,164 SF

UNLESS A PROFESSIONAL SEAL WITH SIGNATURE AND DATE IS AFFIXED, THIS DOCUMENT IS PRELIMINARY AND IS NOT INTENDED FOR CONSTRUCTION, RECORDING PURPOSES, OR IMPLEMENTATION.

C.W. URBAN

THE DESIGNS SHOWN AND DESCRIBED HEREIN INCLUDING ALL TECHNICAL DRAWINGS, GRAPHIC REPRESENTATIONS & MODELS, THEREOF, ARE PROPRIETARY & CAN NOT BE COPIED, DUPLICATED, OR COMMERCIALY EXPLOITED IN WHOLE OR IN PART WITHOUT THE SOLE AND EXPRESS WRITTEN PERMISSION FROM CW URBAN.



1 Floor Main
1/4" = 1'-0"

TOTAL SQUARE FOOTAGE	
Name	Area
BSMT	1,185 SF
	1,185 SF
LEVEL 1	1,384 SF
LEVEL 2	1,595 SF
	2,979 SF
Grand total	4,164 SF

PROJECT
theBASIN
Old Snow Basin Road

REVISIONS:

TITLE:
Floor Plan - Level 1

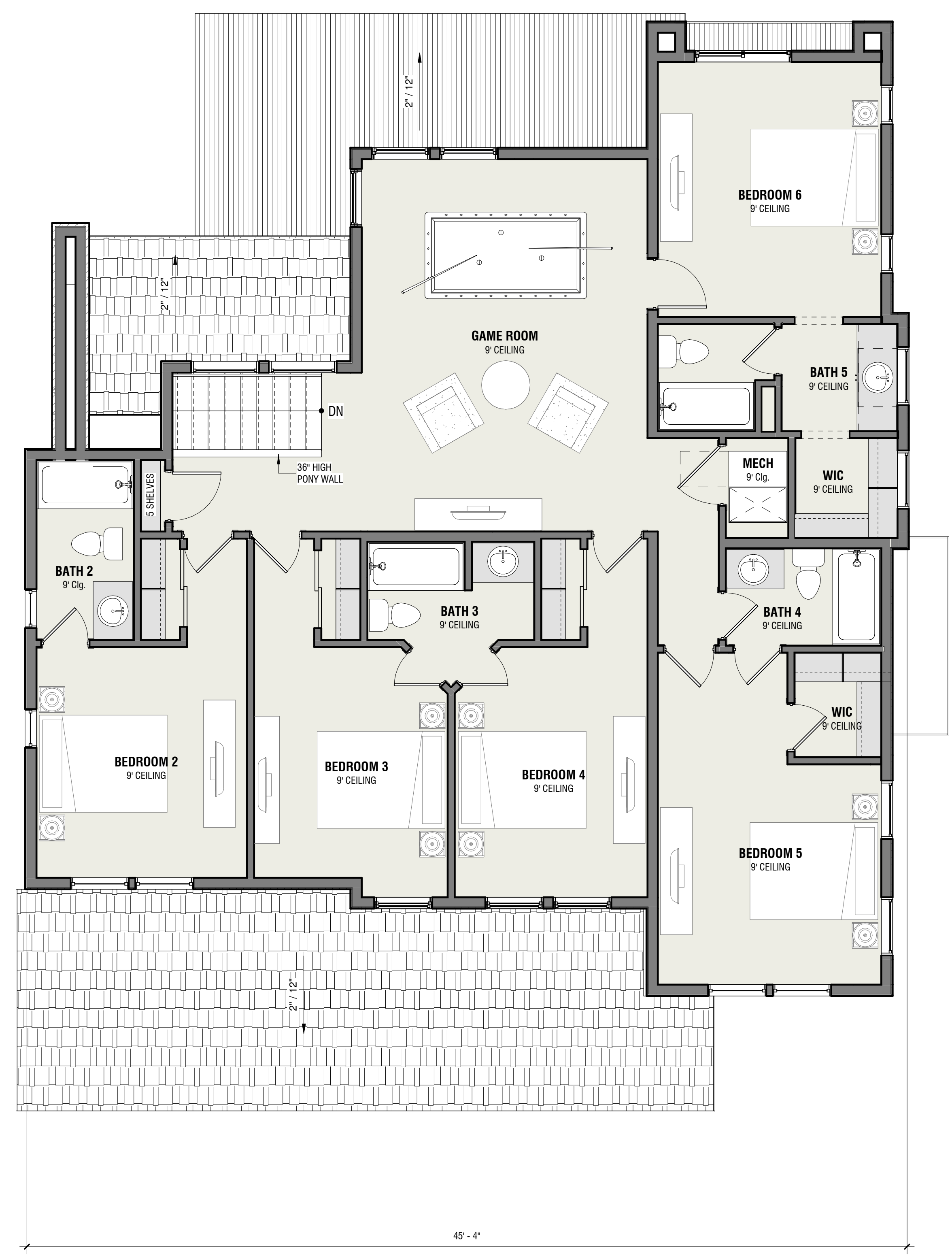
SHEET:
A102

ISSUE DATE: 12.11.2020
Design Development

UNLESS A PROFESSIONAL SEAL WITH SIGNATURE AND DATE IS AFFIXED, THIS DOCUMENT IS PRELIMINARY AND IS NOT INTENDED FOR CONSTRUCTION, RECORDING PURPOSES, OR IMPLEMENTATION

C.W.
URBAN

THE DESIGNS SHOWN AND DESCRIBED HEREIN INCLUDING ALL TECHNICAL DRAWINGS, GRAPHIC REPRESENTATIONS & MODELS, THEREOF, ARE PROPRIETARY & CAN NOT BE COPIED, DUPLICATED, OR COMMERCIALY EXPLOITED IN WHOLE OR IN PART WITHOUT THE SOLE AND EXPRESS WRITTEN PERMISSION FROM CW URBAN



1 Floor Upper
1/4" = 1'-0"

TOTAL SQUARE FOOTAGE	
Name	Area
BSMT	1,185 SF
	1,185 SF
LEVEL 1	1,384 SF
LEVEL 2	1,595 SF
Grand total	4,164 SF

PROJECT
theBASIN
Old Snow Basin Road

REVISIONS:

TITLE:
Floor Plan - Level 2

SHEET:
A103

ISSUE DATE: 12.11.2020
Design Development



UNLESS A PROFESSIONAL SEAL WITH SIGNATURE AND DATE IS AFFIXED, THIS DOCUMENT IS PRELIMINARY AND IS NOT INTENDED FOR CONSTRUCTION, RECORDING PURPOSES, OR IMPLEMENTATION.

C.W.
URBAN

THE DESIGNS SHOWN AND DESCRIBED HEREIN INCLUDING ALL TECHNICAL DRAWINGS, GRAPHIC REPRESENTATIONS & MODELS, THEREOF, ARE PROPRIETARY & CAN NOT BE COPIED, DUPLICATED, OR COMMERCIALY EXPLOITED IN WHOLE OR IN PART WITHOUT THE SOLE AND EXPRESS WRITTEN PERMISSION FROM CW URBAN.

PROJECT
theBASIN
Old Snow Basin Road

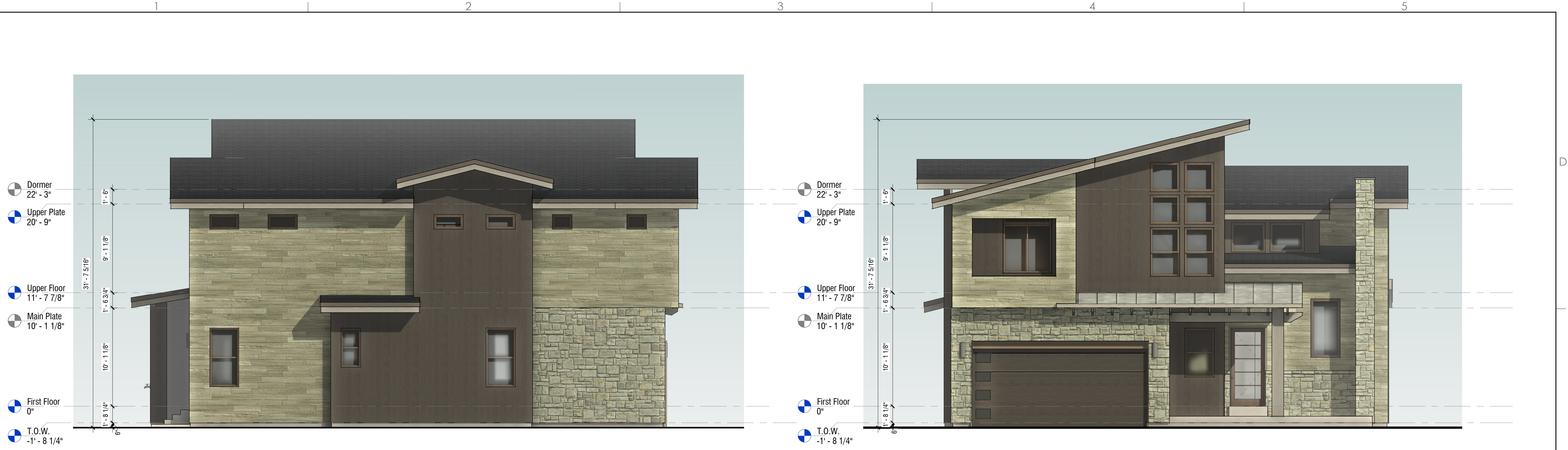
REVISIONS:

TITLE:
Renderings

SHEET:
A200

ISSUE DATE : 12.11.2020

Design Development



- Dormer 22' - 3"
- Upper Plate 20' - 9"
- Upper Floor 11' - 7 7/8"
- Main Plate 10' - 1 1/8"
- First Floor 0"
- T.O.W. -1' - 8 1/4"

- Dormer 22' - 3"
- Upper Plate 20' - 9"
- Upper Floor 11' - 7 7/8"
- Main Plate 10' - 1 1/8"
- First Floor 0"
- T.O.W. -1' - 8 1/4"

4 Left Elevation
3/16" = 1'-0"

1 Front Elevation
3/16" = 1'-0"

UNLESS A PROFESSIONAL SEAL WITH SIGNATURE AND DATE IS AFFIXED, THIS DOCUMENT IS PRELIMINARY AND IS NOT INTENDED FOR CONSTRUCTION, RECORDING PURPOSES, OR IMPLEMENTATION.

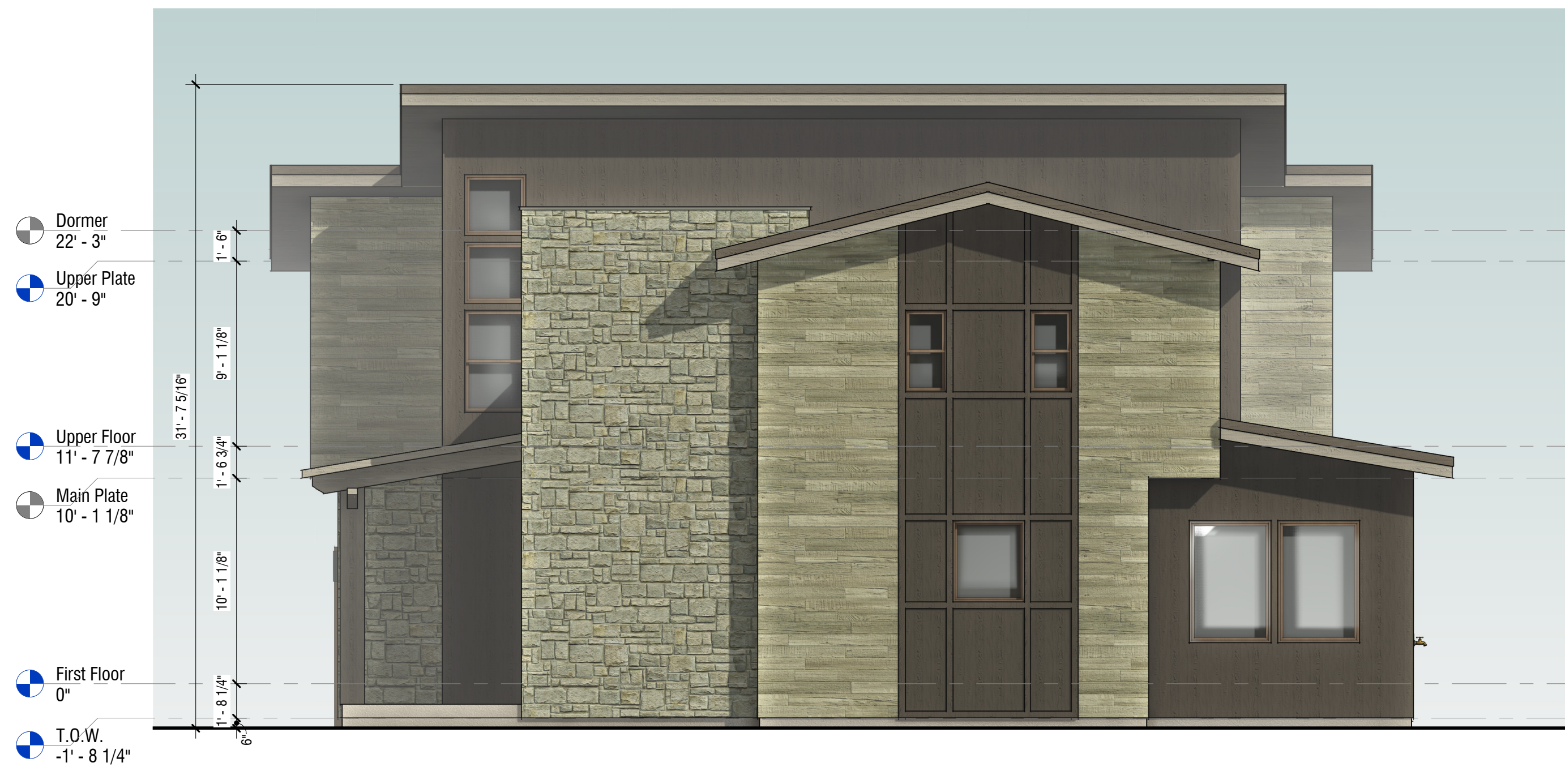
C.W.
URBAN

THE DESIGNS SHOWN AND DESCRIBED HEREIN INCLUDING ALL TECHNICAL DRAWINGS, GRAPHIC REPRESENTATIONS & MODELS, THEREOF, ARE PROPRIETARY & CAN NOT BE COPIED, DUPLICATED, OR COMMERCIALY EXPLOITED IN WHOLE OR IN PART WITHOUT THE SOLE AND EXPRESS WRITTEN PERMISSION FROM CW URBAN.



- Dormer 22' - 3"
- Upper Plate 20' - 9"
- Upper Floor 11' - 7 7/8"
- Main Plate 10' - 1 1/8"
- First Floor 0"
- T.O.W. -1' - 8 1/4"

3 Rear Elevation
3/16" = 1'-0"



- Dormer 22' - 3"
- Upper Plate 20' - 9"
- Upper Floor 11' - 7 7/8"
- Main Plate 10' - 1 1/8"
- First Floor 0"
- T.O.W. -1' - 8 1/4"

2 Right Elevation
3/16" = 1'-0"

PROJECT
theBASIN
Old Snow Basin Road

REVISIONS:

TITLE:
Exterior Elevations

SHEET:
A201

ISSUE DATE: 12.11.2020

Design Development