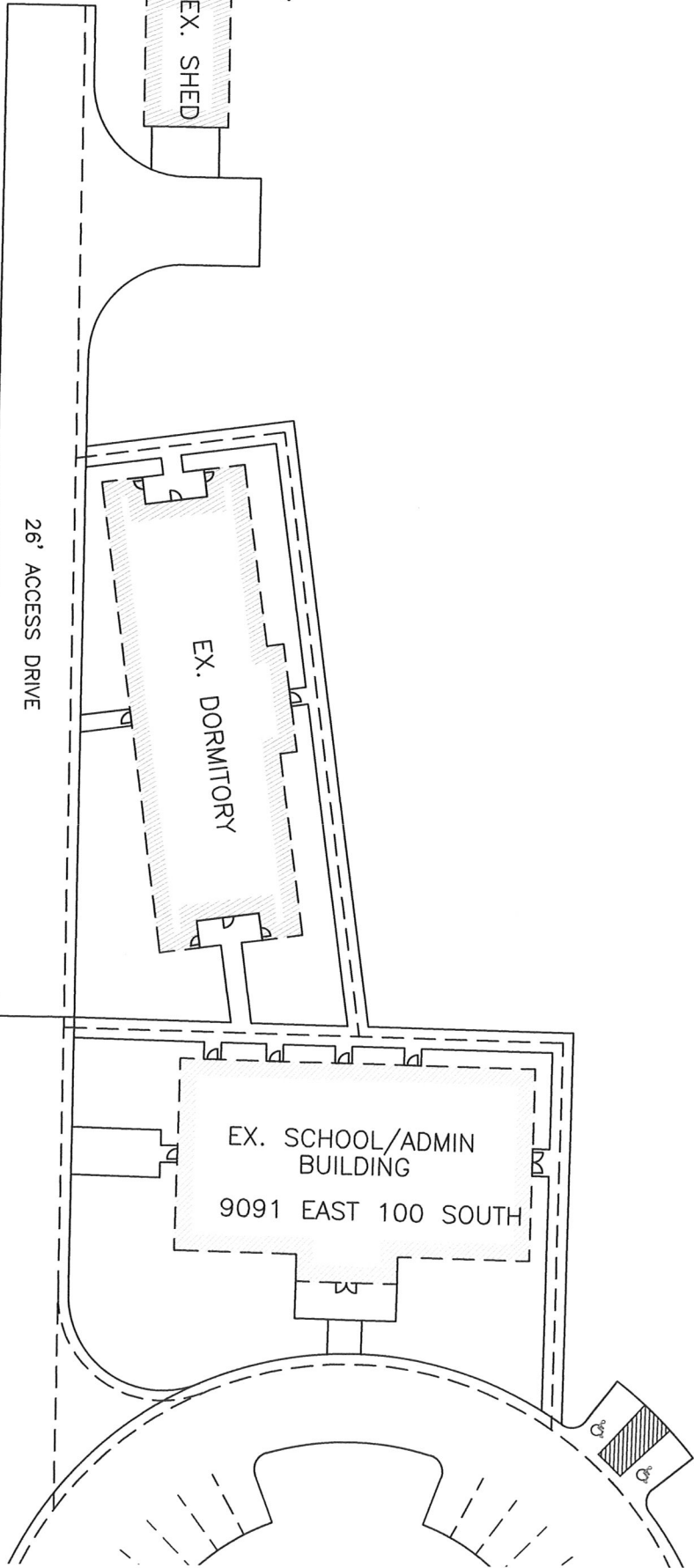
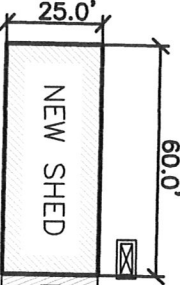




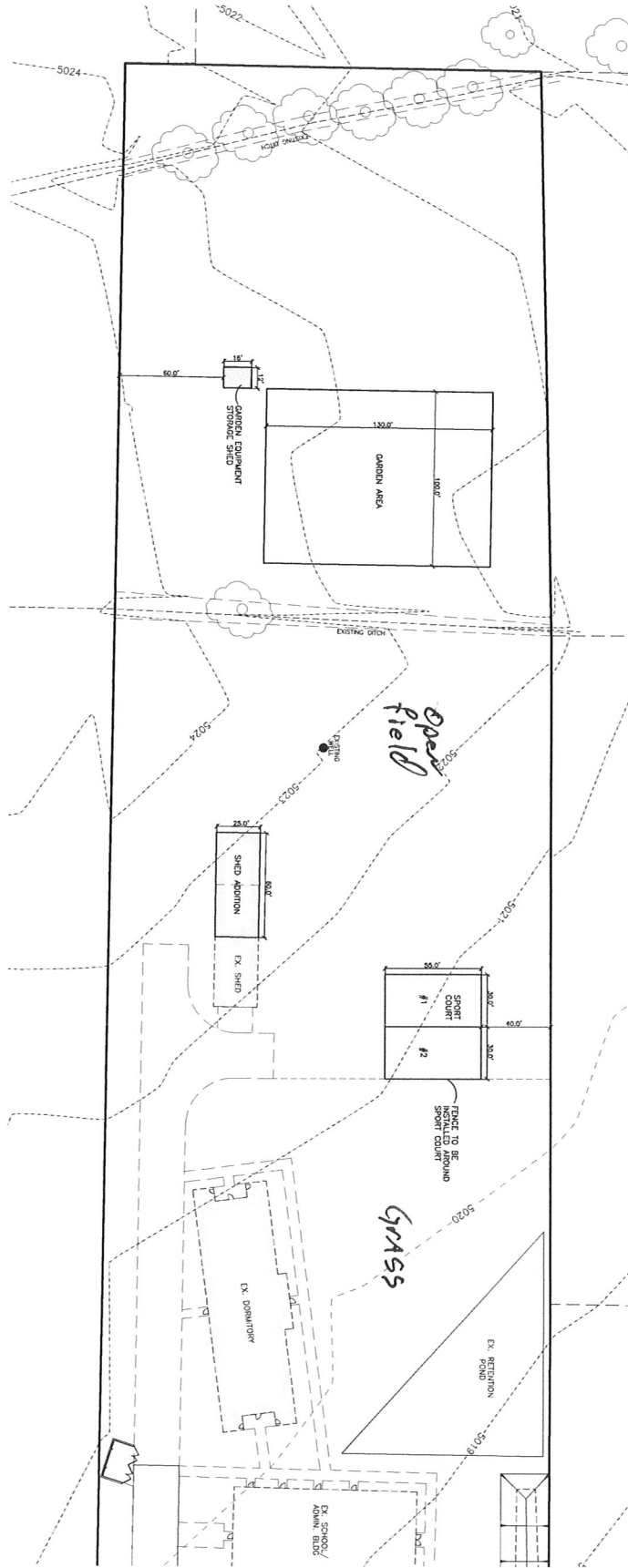
N00°01'44"W 383.21'

N



S00°52'33"W 1287.64'

DUMPSTER ENCLOSURE



THESE PLANS AND SPECIFICATIONS ARE THE PROPERTY OF REEVE & ASSOCIATES, INC., 4102 S. HANCOCK BLVD., OGDEN, UTAH 84403. ANY REUSE, REPRODUCTION, OR COPIES OF ANY PART OF THESE PLANS WITHOUT THE WRITTEN PERMISSION OF REEVE & ASSOCIATES, INC. IS STRICTLY PROHIBITED. THE OWNER AND CONTRACTOR SHALL BE RESPONSIBLE FOR ANY CHANGES OR MODIFICATIONS MADE TO THESE PLANS ON THE FIELD THEREON WITHOUT THEIR CONSENT.

Reeve & Associates, Inc. - Solutions You Can Build On

Project No.	5020-01
Client	GREEN VALLEY ACADEMY
Location	9091 East 100 South, Weber County, Utah
Scale	1" = 30'
Sheet	1 of 1



Green Valley Academy
9091 East 100 South
 WEBER COUNTY, UTAH
Site Amenity Expansion Plan

REVISIONS	
DATE	DESCRIPTION

Reeve & Associates, Inc.
4102 S. HANCOCK BLVD., SUITE 210, OGDEN, UTAH 84403
 TEL: (801) 241-2100 FAX: (801) 241-2000 WWW: WWW.REEVE-ASSOCIATES.COM
 LEAD ARCHITECTS & CIVIL ENGINEERS • LEAD SURVEYORS
 CIVIL ENGINEERS • STRUCTURAL ENGINEERS • LANDSCAPE ARCHITECTS