

NOTICE!

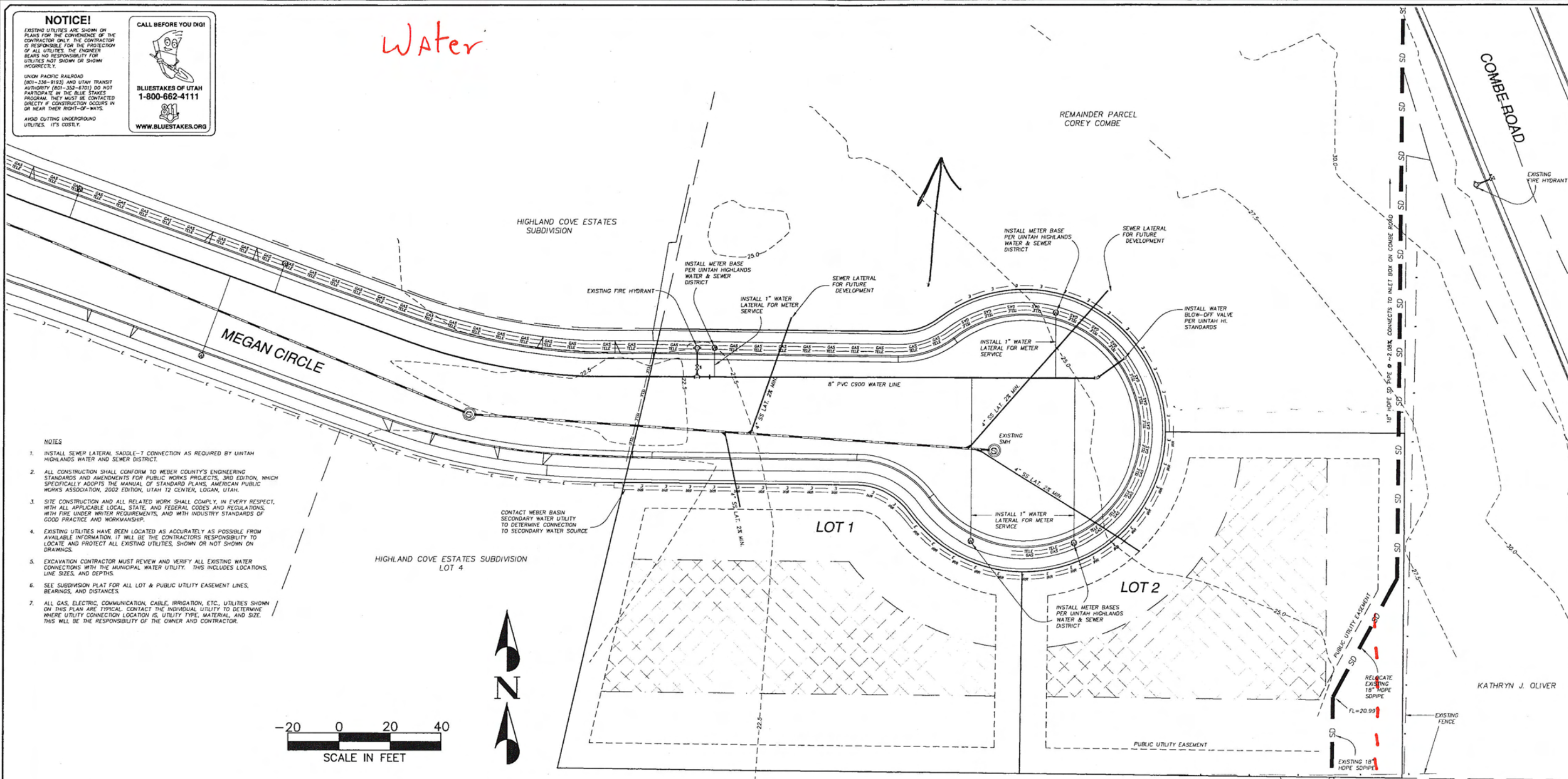
EXISTING UTILITIES ARE SHOWN ON PLANS FOR THE CONVENIENCE OF THE CONTRACTOR ONLY. THE CONTRACTOR IS RESPONSIBLE FOR THE PROTECTION OF ALL UTILITIES. THE ENGINEER BEARS NO RESPONSIBILITY FOR UTILITIES NOT SHOWN OR SHOWN INCORRECTLY.

CALL BEFORE YOU DIG!

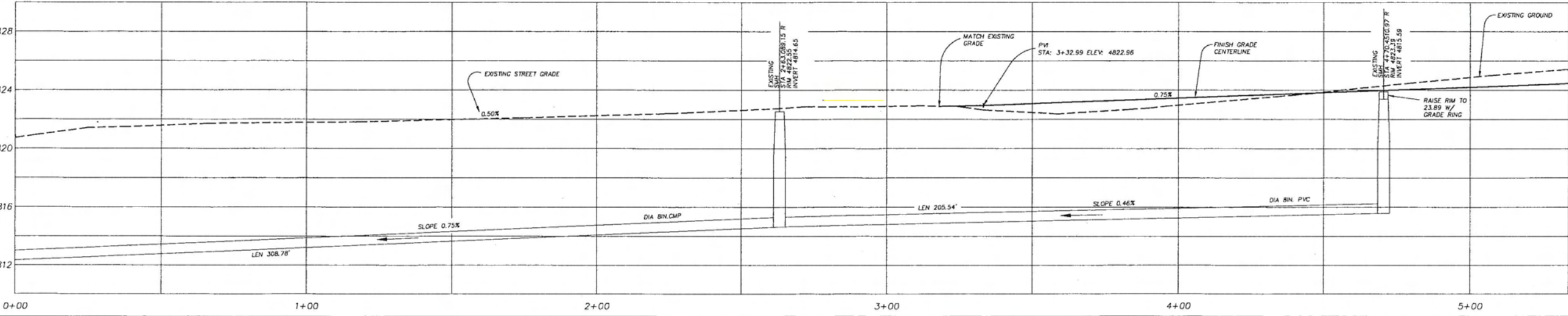
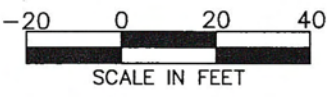


BLUESTAKES OF UTAH
1-800-662-4111
WWW.BLUESTAKES.ORG

Water



- NOTES
1. INSTALL SEWER LATERAL SADDLE-T CONNECTION AS REQUIRED BY UTAH HIGHLANDS WATER AND SEWER DISTRICT.
 2. ALL CONSTRUCTION SHALL CONFORM TO WEBER COUNTY'S ENGINEERING STANDARDS AND AMENDMENTS FOR PUBLIC WORKS PROJECTS, 3RD EDITION, WHICH SPECIFICALLY ADOPTS THE MANUAL OF STANDARD PLANS, AMERICAN PUBLIC WORKS ASSOCIATION, 2002 EDITION, UTAH T2 CENTER, LOGAN, UTAH.
 3. SITE CONSTRUCTION AND ALL RELATED WORK SHALL COMPLY, IN EVERY RESPECT, WITH ALL APPLICABLE LOCAL, STATE, AND FEDERAL CODES AND REGULATIONS, WITH FIRE UNDERWRITER REQUIREMENTS, AND WITH INDUSTRY STANDARDS OF GOOD PRACTICE AND WORKMANSHIP.
 4. EXISTING UTILITIES HAVE BEEN LOCATED AS ACCURATELY AS POSSIBLE FROM AVAILABLE INFORMATION. IT WILL BE THE CONTRACTOR'S RESPONSIBILITY TO LOCATE AND PROTECT ALL EXISTING UTILITIES, SHOWN OR NOT SHOWN ON DRAWINGS.
 5. EXCAVATION CONTRACTOR MUST REVIEW AND VERIFY ALL EXISTING WATER CONNECTIONS WITH THE MUNICIPAL WATER UTILITY. THIS INCLUDES LOCATIONS, LINE SIZES, AND DEPTHS.
 6. SEE SUBDIVISION PLAT FOR ALL LOT & PUBLIC UTILITY EASEMENT LINES, BEARINGS, AND DISTANCES.
 7. ALL GAS, ELECTRIC, COMMUNICATION, CABLE, IRRIGATION, ETC., UTILITIES SHOWN ON THIS PLAN ARE TYPICAL. CONTACT THE INDIVIDUAL UTILITY TO DETERMINE WHERE UTILITY CONNECTION LOCATION IS, UTILITY TYPE, MATERIAL, AND SIZE. THIS WILL BE THE RESPONSIBILITY OF THE OWNER AND CONTRACTOR.



NO.	REV.	DESCRIPTION	DATE
1.	REV. PER SURVEYOR PLAT, IMPROVEMENTS		9-20-07
2.	REV. PER SURVEYOR PLAT, IMPROVEMENTS		3-1-08
3.	REV. PER SURVEYOR PLAT, IMPROVEMENTS		4-1-08

J.O. GLIDDEN CONSULTING, L.L.C.
 CIVIL DESIGN ENGINEERING
 1009 23rd ST. • OGDEN, UTAH 84401
 (801) 726-5934 • jglidden@jglidden.com
 www.jglidden.com

COMBE SOUTH SUBDIVISION NO. 2
 IMPROVEMENT PLANS
 UTILITIES
 KATHRYN J. OLIVER
 PROJECT NUMBER: 0071
 DRAWING FILE: 02_Improvements
 PLOT DATE: 4-18-08

NOTICE!

EXISTING UTILITIES ARE SHOWN ON PLANS FOR THE CONVENIENCE OF THE CONTRACTOR ONLY. THE CONTRACTOR IS RESPONSIBLE FOR THE PROTECTION OF ALL UTILITIES. THE ENGINEER BEARS NO RESPONSIBILITY FOR UTILITIES NOT SHOWN OR SHOWN INCORRECTLY.

UNION PACIFIC RAILROAD (801-338-9183) AND UTAH TRANSIT AUTHORITY (801-325-6700) DO NOT PARTICIPATE IN THE BLUE STAKES PROGRAM. THEY MUST BE CONTACTED DIRECTLY IF CONSTRUCTION OCCURS IN OR NEAR THEIR RIGHT-OF-WAYS.

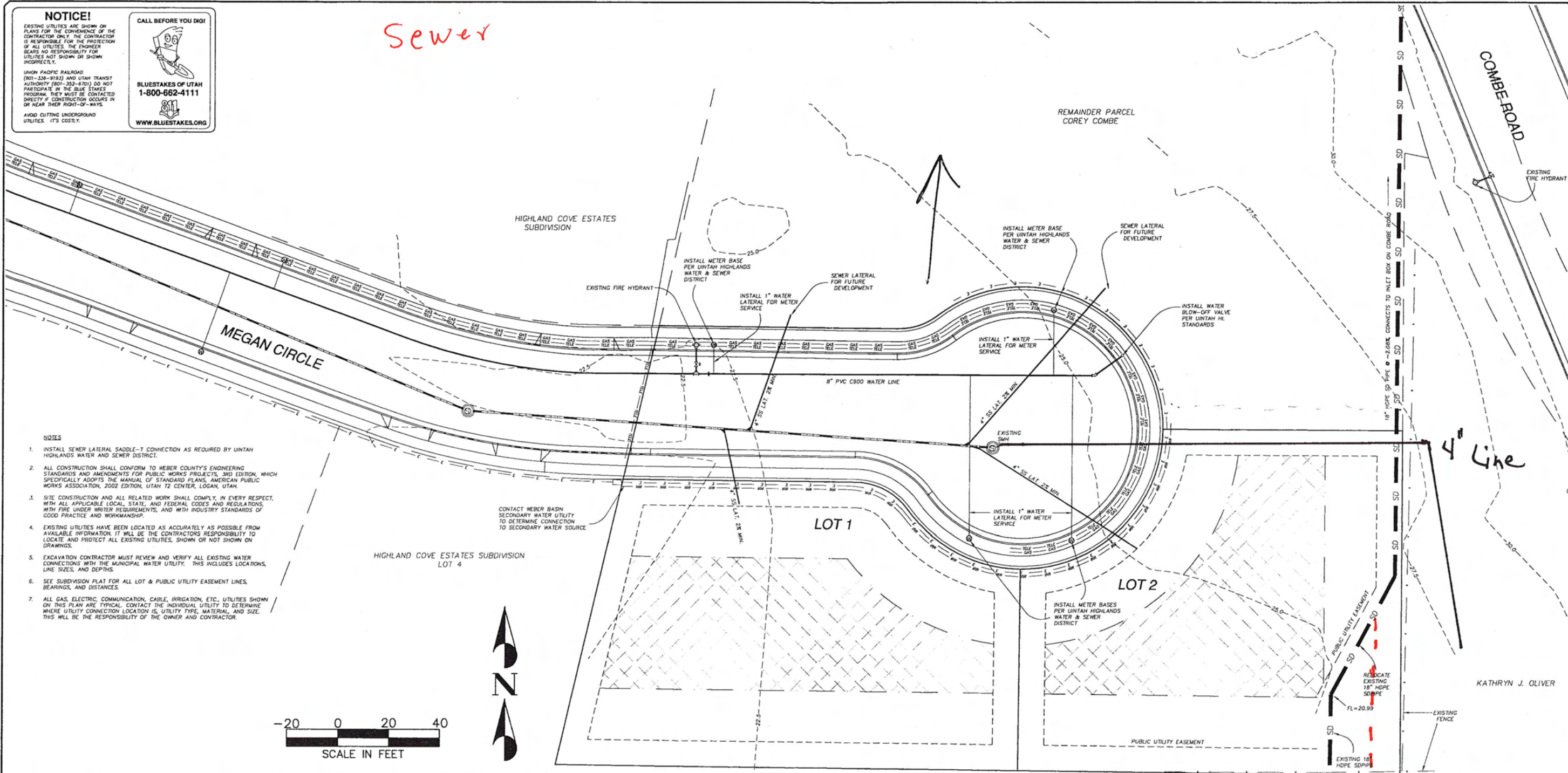
AVOID CUTTING UNDERGROUND UTILITIES. IT'S COSTLY.

CALL BEFORE YOU DIG!

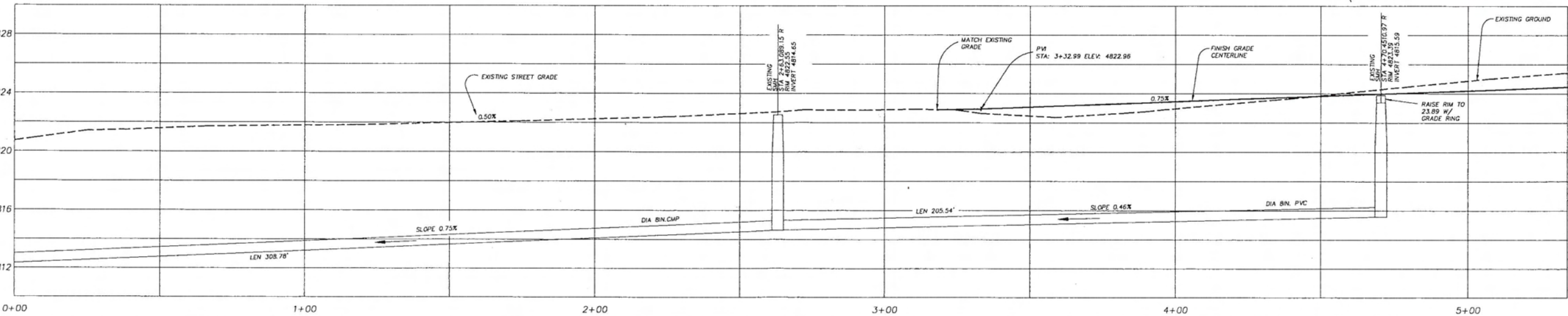
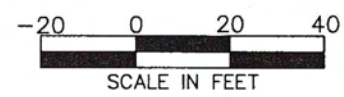


BLUESTAKES OF UTAH
1-800-662-4111
WWW.BLUESTAKES.ORG

Sewer



- NOTES**
1. INSTALL SEWER LATERAL SADDLE-T CONNECTION AS REQUIRED BY UTAH HIGHLANDS WATER AND SEWER DISTRICT.
 2. ALL CONSTRUCTION SHALL CONFORM TO WEBER COUNTY'S ENGINEERING STANDARDS AND AMENDMENTS FOR PUBLIC WORKS PROJECTS, 3RD EDITION, WHICH SPECIFICALLY ADOPTS THE MANUAL OF STANDARD PLANS, AMERICAN PUBLIC WORKS ASSOCIATION, 2002 EDITION, UTAH T2 CENTER, LOGAN, UTAH.
 3. SITE CONSTRUCTION AND ALL RELATED WORK SHALL COMPLY, IN EVERY RESPECT, WITH ALL APPLICABLE LOCAL, STATE, AND FEDERAL CODES AND REGULATIONS, WITH FIRE UNDER WRITER REQUIREMENTS, AND WITH INDUSTRY STANDARDS OF GOOD PRACTICE AND WORKMANSHIP.
 4. EXISTING UTILITIES HAVE BEEN LOCATED AS ACCURATELY AS POSSIBLE FROM AVAILABLE INFORMATION. IT WILL BE THE CONTRACTOR'S RESPONSIBILITY TO LOCATE AND PROTECT ALL EXISTING UTILITIES, SHOWN OR NOT SHOWN ON DRAWINGS.
 5. EXCAVATION CONTRACTOR MUST REVIEW AND VERIFY ALL EXISTING WATER CONNECTIONS WITH THE MUNICIPAL WATER UTILITY. THIS INCLUDES LOCATIONS, LINE SIZES, AND DEPTHS.
 6. SEE SUBDIVISION PLAT FOR ALL LOT & PUBLIC UTILITY EASEMENT LINES, BEARINGS, AND DISTANCES.
 7. ALL GAS, ELECTRIC, COMMUNICATION, CABLE, IRRIGATION, ETC., UTILITIES SHOWN ON THIS PLAN ARE TYPICAL. CONTACT THE INDIVIDUAL UTILITY TO DETERMINE WHERE UTILITY CONNECTION LOCATION IS, UTILITY TYPE, MATERIAL, AND SIZE. THIS WILL BE THE RESPONSIBILITY OF THE OWNER AND CONTRACTOR.



REV.	REV. SURVEYOR PLAT	DATE	DESCRIPTION
1.	REV. PER SURVEYOR PLAT	9-29-07	JOG
2.	REV. PER SURVEYOR PLAT, IMPROVEMENTS	3-1-08	JOG
3.	REV. PER SURVEYOR PLAT, IMPROVEMENTS	4-1-08	JOG

NO.	SCALE	DESCRIPTION
20		

J.O. GLIDDEN CONSULTING, L.L.C.
CIVIL DESIGN ENGINEERING

1009 23rd ST. • CODEN, UTAH 84401
(801) 726-5334 • joglidden@joglidden.com
www.joglidden.com

COMBE SOUTH SUBDIVISION NO. 2
IMPROVEMENT PLANS
UTILITIES

PROJECT NUMBER: 0071
DRAWING FILE: 02-Improvements

WEBER COUNTY

SHEET NO. 2/3

REMAINDER PARCEL
COREY COMBE

Sub.#2

HIGHLAND COVE ESTATES
SUBDIVISION

EXISTING FIRE HYDRANT

INSTALL METER BASE
PER UTAH HIGHLANDS
WATER & SEWER
DISTRICT

INSTALL 1" WATER
LATERAL FOR METER
SERVICE

SEWER LATERAL
FOR FUTURE
DEVELOPMENT

INSTALL METER BASE
PER UTAH HIGHLANDS
WATER & SEWER
DISTRICT

SEWER LATERAL
FOR FUTURE
DEVELOPMENT

INSTALL 1" WATER
LATERAL FOR METER
SERVICE

8" PVC C900 WATER LINE

EXISTING
SIDE

INSTALL 1" WATER
LATERAL FOR METER
SERVICE

3" V 3" PIPE
CONTACT WEBER BASIN
SECONDARY WATER UTILITY
TO DETERMINE CONNECTION
TO SECONDARY WATER SOURCE

LOT 1

HIGHLAND COVE ESTATES SUBDIVISION
LOT 4

LOT 2

INSTALL METER BASES
PER UTAH HIGHLANDS
WATER & SEWER
DISTRICT

Gas
Weber Basin
Power

