

Smart Fields Phase 1

A part of the Southwest Quarter of Section 21, T6N, R2W, SLB&M, U.S. Survey
Weber County, Utah
Aug 2021

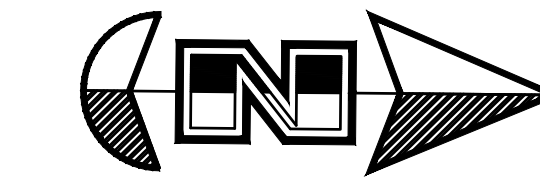


VICINITY MAP
Not to Scale

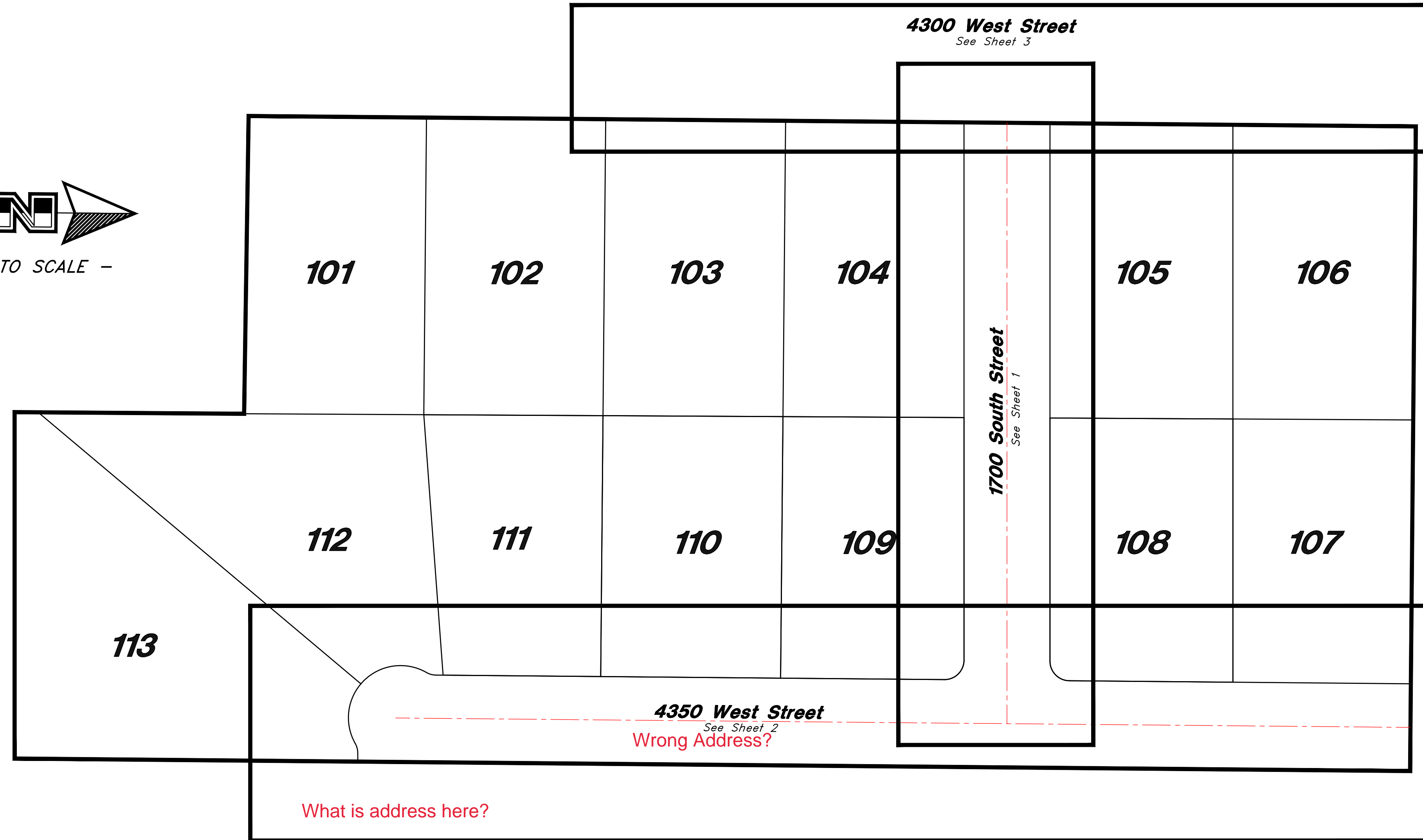
* See All Sheets *

NOTES

- All construction shall conform to Weber County standards and specifications.
- Underground utility piping materials will meet or exceed Weber County Standards.
- Culinary water services will be 3/4" Dia. C-900 DR14 PVC to be centered on the frontage and extended 10' beyond the right of way line.
- 4" Sanitary sewer laterals to be constructed 10' down slope from the center of the lot and extended 10' beyond the right of way line.
- All Utility trenches within the Street right of way shall have a County approved imported granular backfill.
- Thrust block all water line fittings.
- All inlet grates shall be bicycle safe.
- All fire hydrants and access roads shall be installed prior to any construction of any buildings.
- All fire hydrants shall be placed with 4 1/2 inch connections facing the point of access for the Fire Department Apparatus.
- Prior to the beginning of construction of any buildings, a fire flow test of new hydrants shall be conducted to verify the actual fire flow for this project. The Fire Prevention Division shall witness this test and shall be notified a minimum of 48 hours prior to the test.
- Curb & gutter will be set to ensure a 1.5% minimum/3.0% Maximum cross slope from edge of asphalt. Contractor to verify prior to construction of curb.
- An excavation permit is required for all work done within the existing Right of Way.
- A Storm Water Construction Activity Permit is required for any construction that disturbs more than 5000 Sq. Ft. or 200 Cubic Yards.
- All improvements need to be either installed or escrowed prior to recording of the subdivision.
- If construction activity will disturb more than an acre then a State SWPPP will be required. This includes the construction of the homes etc. on each lot.
- Roadways and signage shall comply with appendix D of the 2015 International Fire Code as adopted by Weber Fire District.
- Construct ADA Ramps with Truncated Domes with detectable warning systems cast in place, gray in color per APWA Plan 235.1.



- NOT TO SCALE -



Legend

(Note: All items may not appear on drawing)

- San. Sewer Manhole
- Water Manhole
- Storm Drain Manhole
- Cleanout
- Electrical Manhole
- Catch Basins
- Exist. Fire Hydrant
- Fire Hydrant
- Exist. Water Valve
- Water Valve
- Sanitary Sewer
- Culinary Water
- Gas Line
- Irrigation Line
- Storm Drain
- Telephone Line
- Secondary Waterline
- Power Line
- Fire Line
- Land Drain
- Power pole
- Power pole w/guy
- Light Pole
- Fence
- Flowline of ditch
- Overhead Power line
- Corrugated Metal Pipe
- Concrete Pipe
- Ductile Iron
- Polyvinyl Chloride
- Top of Asphalt
- Edge of Asphalt
- Centerline
- Flowline
- Finish Floor
- Top of Curb
- Top of Wall
- Top of Walk
- Top of Concrete
- Natural Ground
- Finish Grade
- Match Existing
- Fire Department Connection
- Finish Contour
- Exist. Contour
- Finish Grade
- Exist. Grade
- Ridge Line
- Direction of Flow
- Existing Asphalt
- New Asphalt
- Existing Concrete
- New Concrete

GENERAL UTILITY NOTES:

- Coordinate all utility connections to building with plumbing plans and building contractor.
- Verify depth and location of all existing utilities prior to constructing any new utility lines. Notify Civil Engineer of any discrepancies or conflicts prior to any connections being made.
- All catch basin and inlet box grates are to be bicycle proof.
- All inlet boxes located in curb and gutter are to be placed parallel to the curb and gutter and set under the frame and grate. Improperly placed boxes will be removed and replaced at no additional cost to the owner. Precast or cast in place boxes are acceptable.
- Refer to the site electrical plan for details and locations of electrical lines, transformers and light poles.
- Gas lines, telephone lines, and cable TV lines are not a part of these plans unless otherwise noted.
- Water meters are to be installed per water district standards and specifications. It will be the contractor's responsibility to install all items required.
- Water lines, valves, fire hydrants, fittings etc. are to be constructed as shown. Contractor is responsible to construct any vertical adjustments necessary to clear sewer, storm drain or other utilities as necessary including valve boxes and hydrant spools to proper grade.
- Field verify all existing and/or proposed Roof Drain/Roof Drain down spout connections to Storm Water System with Civil, Plumbing & Architectural plans. Notify Engineer of any discrepancies.
- All gravity flow utility lines shall be installed prior to any pressurized utilities unless written permission is obtained from the engineer of record before construction begins.

UTILITY PIPING MATERIALS:

All piping to be installed per manufacturers recommendations. Refer to project specifications for more detailed information regarding materials, installation, etc.

CULINARY SERVICE LATERALS

- 3/4" to 2" diameter pipe - copper tube ASTM B, Type K, Soft Temper
- Over 2" diameter pipe - AWWA C-900 Class 150 pipe

WATER MAIN LINES AND FIRE LINES

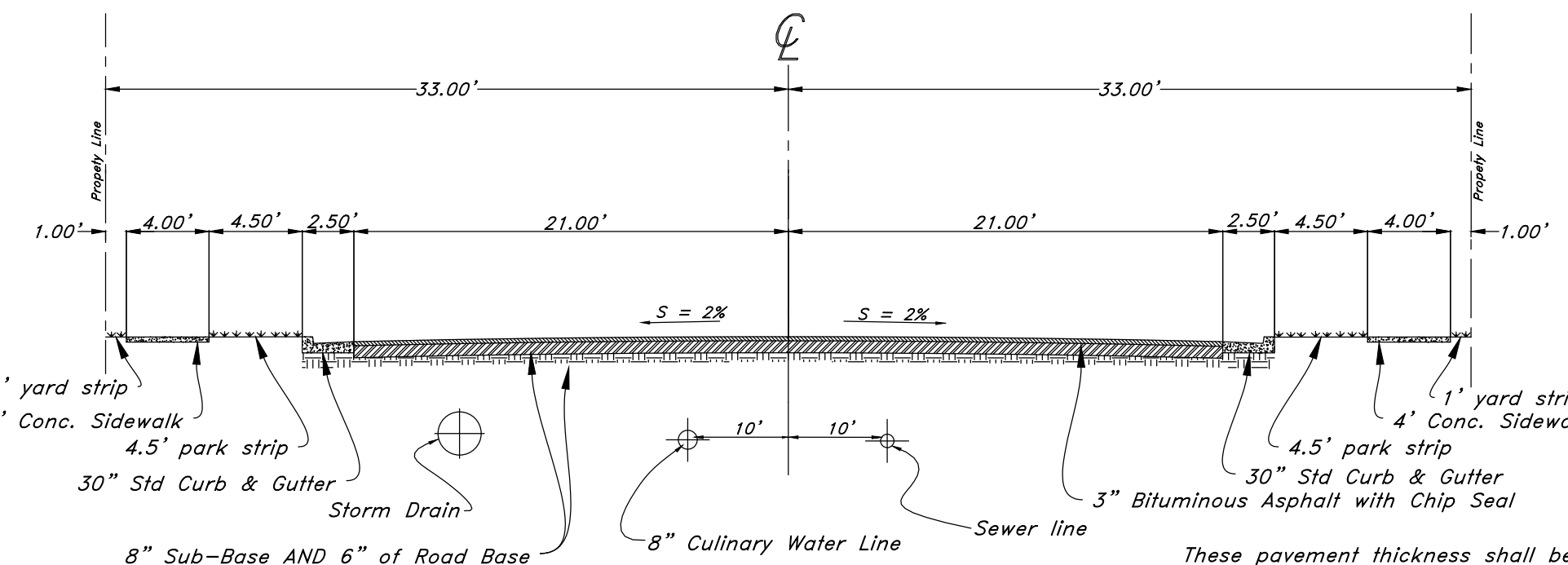
- Pipe material as shown on utility plan view or to meet County standards.

SANITARY SEWER LINES

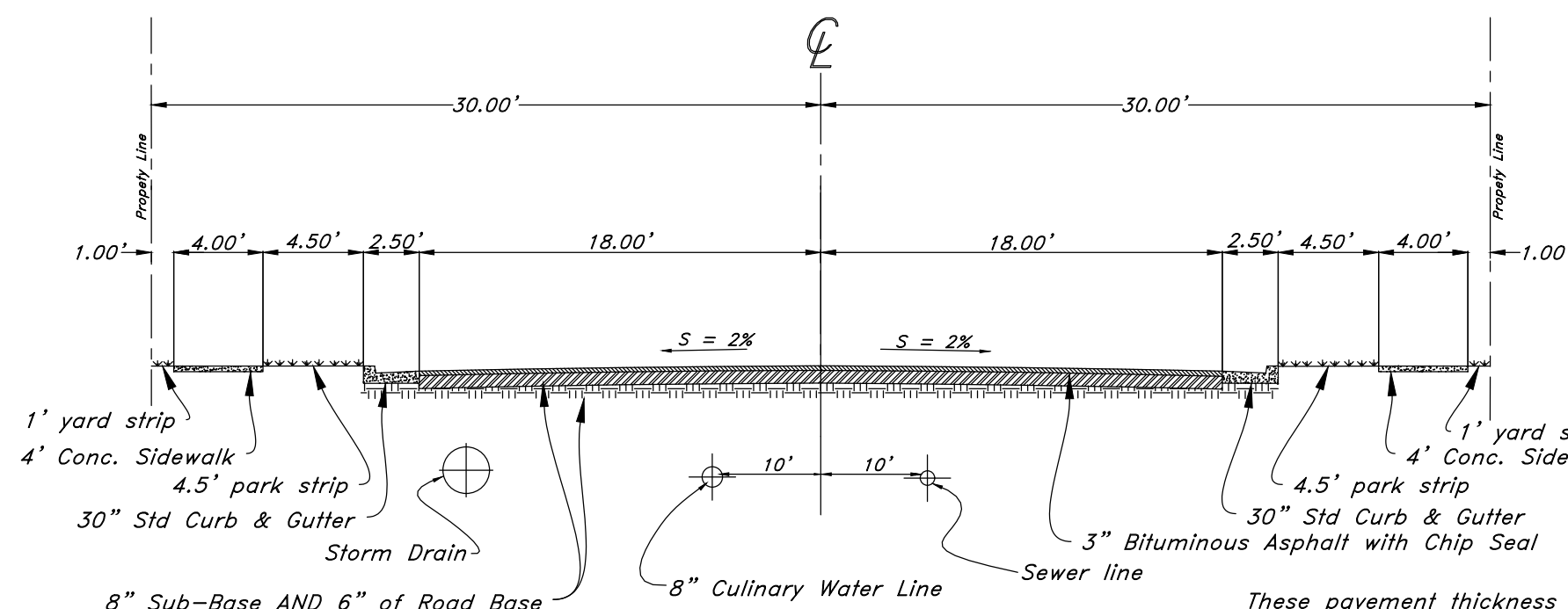
- All sewer piping to be Polyvinyl Chloride (PVC) sewer pipe, ASTM D 3034, Type PSM, SDR 35

STORM DRAIN LINES

- 10" pipes or smaller - Polyvinyl Chloride (PVC) sewer pipe, ASTM D3034, Type PSM, SDR 35
- 12" to 21" pipes - Reinforced Concrete Pipe, ASTM C14, Class III up to 13' of cover. For greater than 13' feet of cover, use reinforced concrete pipe and classes listed below.
- 24" pipes or larger - Reinforced Concrete Pipe, ASTM C76, Class III up to 13' of cover, Class IV for 13' to 21' of cover, Class V for 21' to 32' of cover, and Special Design for cover greater than 32 feet.



4300 West Roadway Section



Standard Rural Roadway Section

These pavement thickness shall be considered as minimums as may be increased by the County Engineer when the subgrade C.B.R. is less than 10 or when a greater depth is necessary to provide sufficient suability. Developer may submit and alternative pavement design based on a soils analysis for approval by the County Engineer. Compaction test on both sub-base and base courses will be required.

These pavement thickness shall be considered as minimums as may be increased by the County Engineer when the subgrade C.B.R. is less than 10 or when a greater depth is necessary to provide sufficient suability. Developer may submit and alternative pavement design based on a soils analysis for approval by the County Engineer. Compaction test on both sub-base and base courses will be required.

Please show ped ramps for the crossings.



PRIVATE ENGINEER'S NOTICE TO CONTRACTORS

The Contractor agrees that he shall assume sole and complete responsibility for job site conditions during the course of construction of this project, including safety of all persons and property; that this requirement shall apply continuously and not be limited to normal working hours; and that the contractor shall defend, indemnify, and hold the owner and the engineer harmless from any and all liability, real or alleged, in connection with the performance of work on this project, excepting for liability arising from the sole negligence of the owner or the engineer.

CAUTION NOTICE TO CONTRACTOR

The contractor is specifically cautioned that the location and/or elevation of existing utilities as shown on these plans are based on records of the various utility companies and, where possible, measurements taken in the field. The information is not to be relied on as being exact or complete. The contractor must call the appropriate utility company at least 48 hours before any excavation to request exact field location of utilities. It shall be the responsibility of the contractor to relocate all existing utilities which conflict with the proposed improvements shown on the plans.

NOT FOR CONSTRUCTION

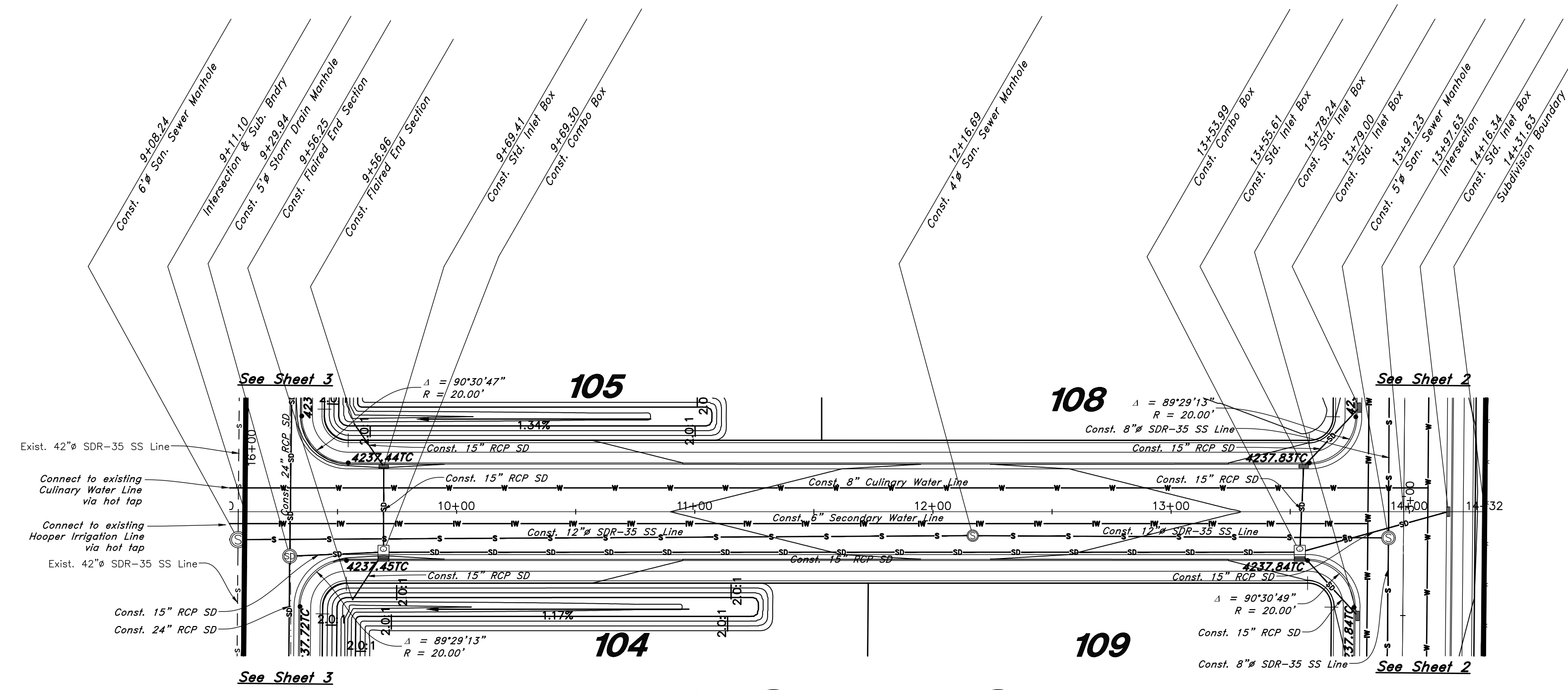
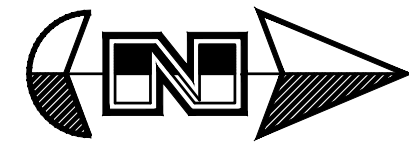
GREAT BASIN ENGINEERING
5746 SOUTH 1475 EAST OGDEN, UTAH 84403
MAIN (801) 994-4515 S.L.C. (801) 521-0222 FAX (801) 395-7544
WWW.GREATBASINENGINEERING.COM

Plan and Profile
Smart Fields
Approx. 1800 South 4300 West Street
Ogden City, Weber County, Utah
A part of Section 21, T6N, R2W, SLB&M, U.S. Survey

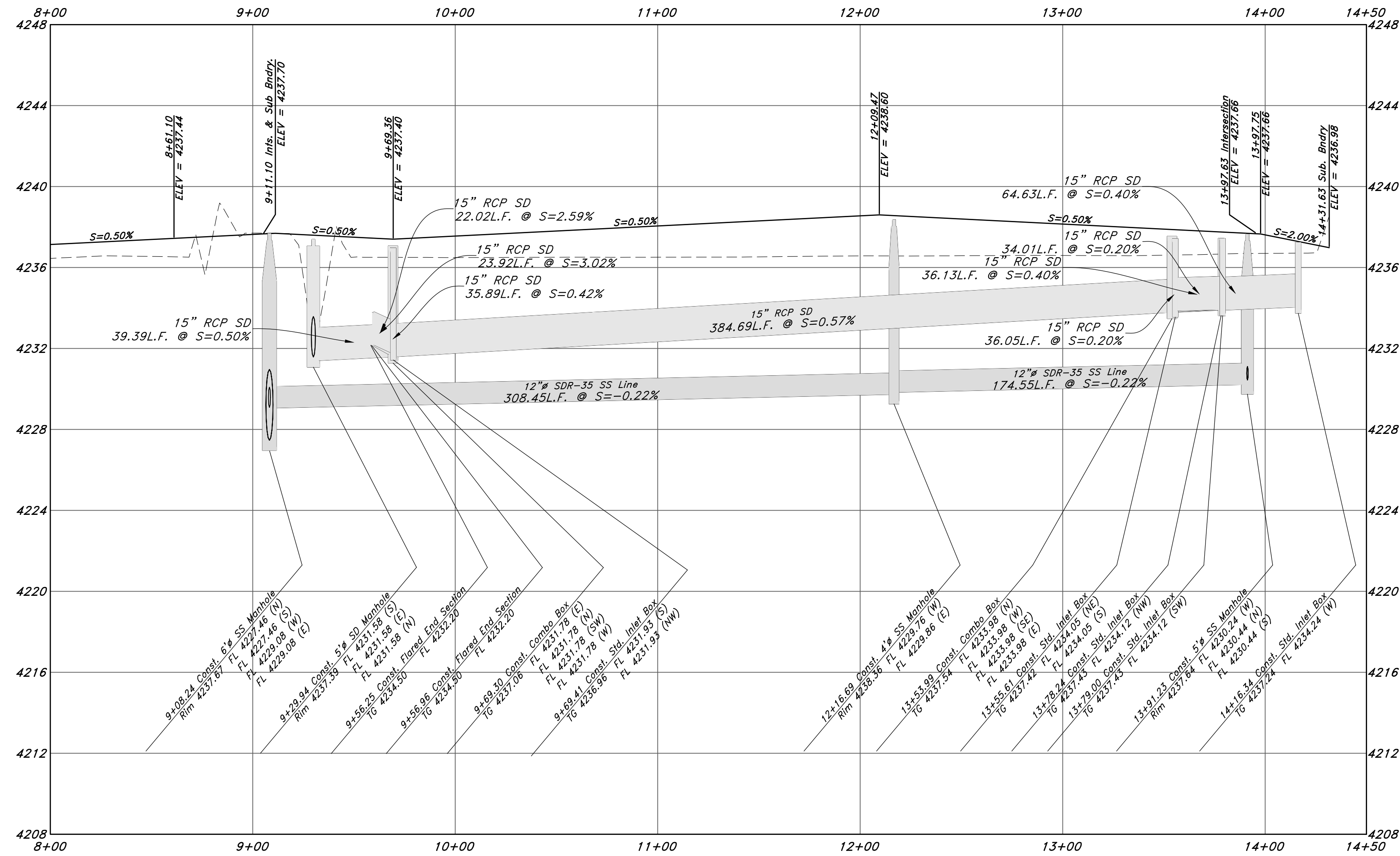
August 2021

SHEET NO. **CO**

21N700



1700 South Street



No culinary or secondary water lines
in profiles.

Legend

- (Note: All items may not appear on drawing)
- San. Sewer Manhole
 - Water Manhole
 - Storm Drain Manhole
 - Electrical Manhole
 - Catch Basins
 - Exist. Fire Hydrant
 - Fire Hydrant
 - Exist. Water Valve
 - Water Valve
 - Sanitary Sewer
 - Culinary Water
 - Gas Line
 - Irrigation Line
 - Storm Drain
 - Telephone Line
 - Secondary Waterline
 - Power Line
 - Fire Line
 - Land Drain
 - Power pole w/guy
 - Light Pole
 - Fence
 - Flowline of ditch
 - Overhead Power line
 - Corrugated Metal Pipe
 - Concrete Pipe
 - Reinforced Concrete Pipe
 - Ductile Iron
 - PVC
 - TA
 - EA
 - CL
 - FL
 - FF
 - TC
 - TWL
 - TW
 - TGN
 - NG
 - Flowline
 - Finish Floor
 - Top of Curb
 - Top of Wall
 - Top of Walk
 - Top of Concrete
 - Natural Ground
 - Finish Contour
 - Exist. Contour
 - Finish Grade
 - Ridge Line
 - Direction of Flow
 - Existing Asphalt
 - New Asphalt
 - Heavy Duty Asphalt
 - Concrete
 - Open Face
 - Curb & Gutter

GREAT BASIN ENGINEERING
 5746 SOUTH 1475 EAST OGDEN, UTAH 84403
 MAIN (801)394-4451 S.L.L.C. (801)521-0222 FAX (801)392-7544
 WWW.GREATBASINENGINEERING.COM

Plan and Profile
Smart Fields
 Approx. 1800 South 4300 West Street
 Ogden City, Weber County, Utah
 A part of Section 21, T6N, R2W, SLB&M, U.S. Survey

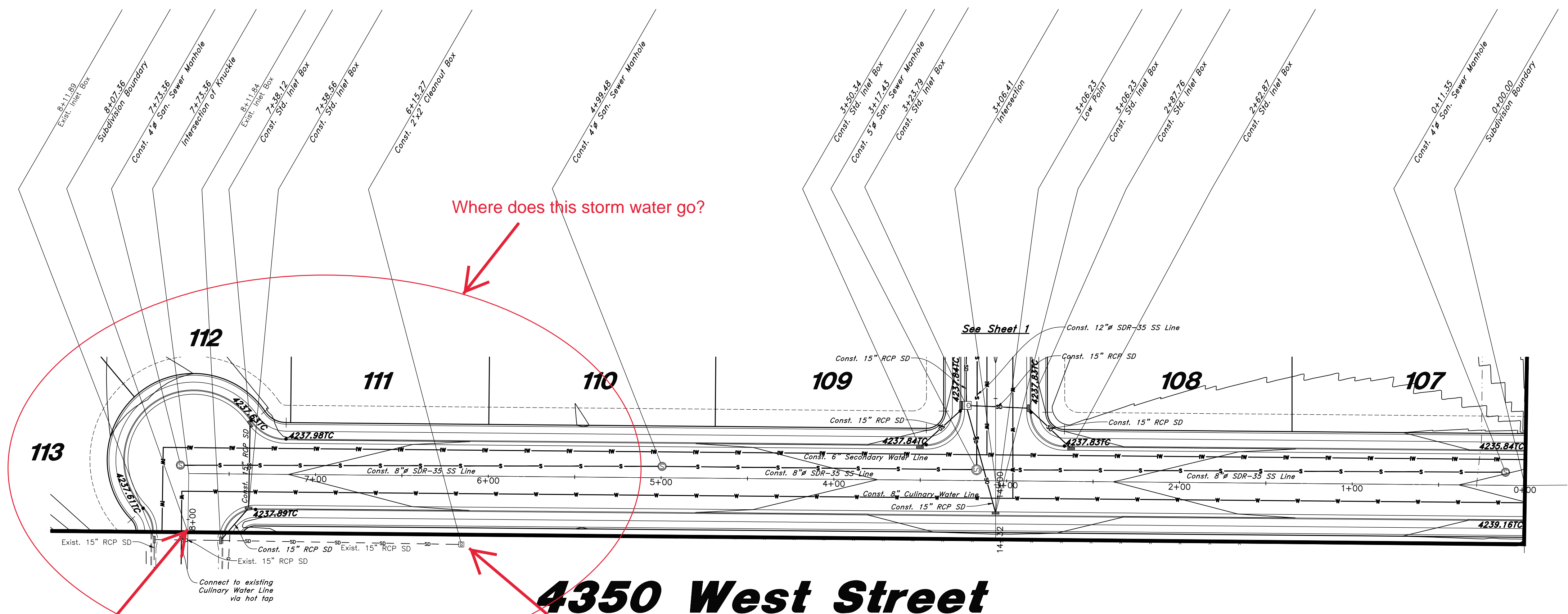
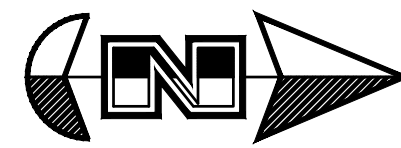


August 2021

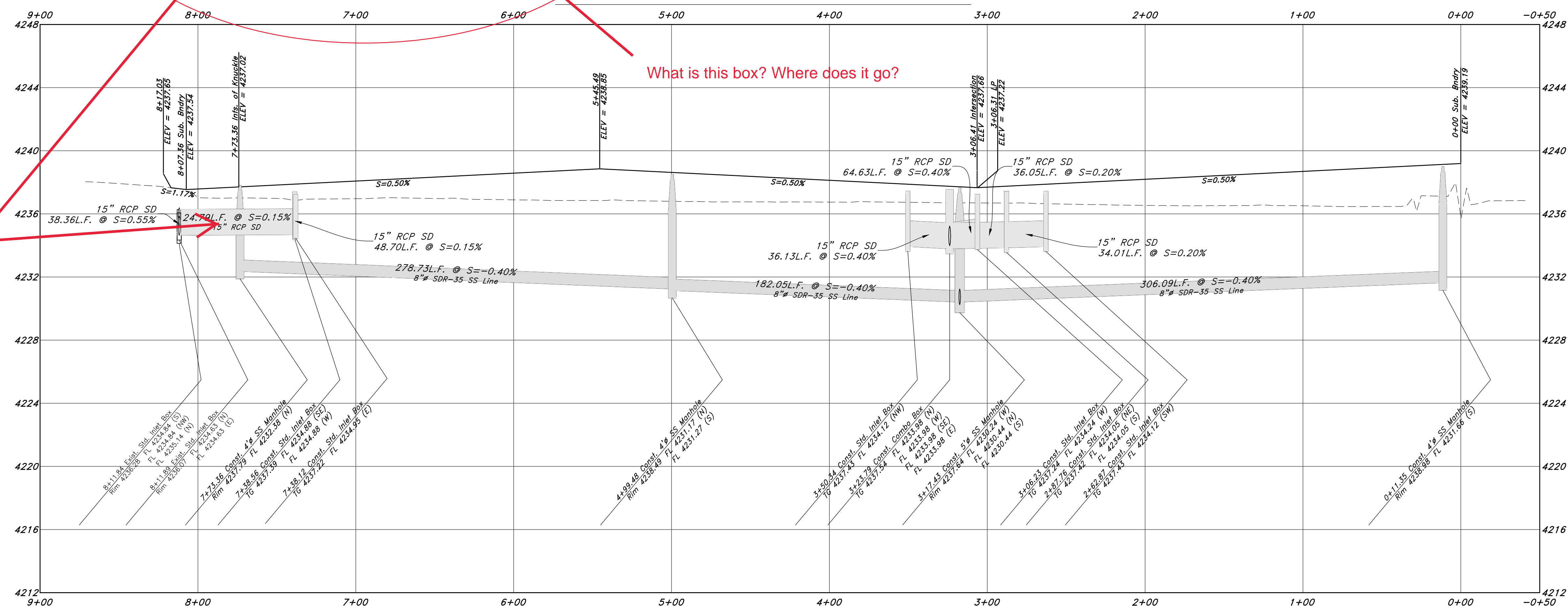
SHEET NO.

C1

21N700



4350 West Street



Legend

- (Note: All items may not appear on drawing)
- San. Sewer Manhole
 - Water Manhole
 - Storm Drain Manhole
 - Electrical Manhole
 - Catch Basins
 - Exist. Fire Hydrant
 - Fire Hydrant
 - Exist. Water Valve
 - Water Valve
 - Sanitary Sewer
 - Culinary Water
 - Gas Line
 - Irrigation Line
 - Storm Drain
 - Telephone Line
 - Secondary Waterline
 - Power Line
 - Fire Line
 - Land Drain
 - Power pole w/guy
 - Light Pole
 - Fence
 - Flowline of ditch
 - Overhead Power line
 - Corrugated Metal Pipe
 - Concrete Pipe
 - Reinforced Concrete Pipe
 - Ductile Iron
 - Polyvinyl Chloride
 - Top of Asphalt
 - EA
 - CL
 - FL
 - FF
 - TC
 - TWL
 - Top of Wall
 - Top of Concrete
 - Natural Ground
 - Finish Contour
 - Exist. Contour
 - Finish Grade
 - Exist. Grade
 - Ridge Line
 - Direction of Flow
 - Existing Asphalt
 - New Asphalt
 - Heavy Duty Asphalt
 - Concrete
 - Open Face Curb & Gutter

GREAT BASIN ENGINEERING

5746 SOUTH 1475 EAST OGDEN, UTAH 84403
 MAIN (801)394-4515 S.L.L.C. (801)521-0222 FAX (801)392-7544
 WWW.GREATBASINENGINEERING.COM

Plan and Profile

Smart Fields

Approx. 1800 South 4300 West Street
 Ogden City, Weber County, Utah
 A part of Section 21, T6N, R2W, S18&M, U.S. Survey

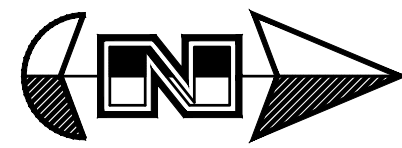


August 2021

SHEET NO.

C2

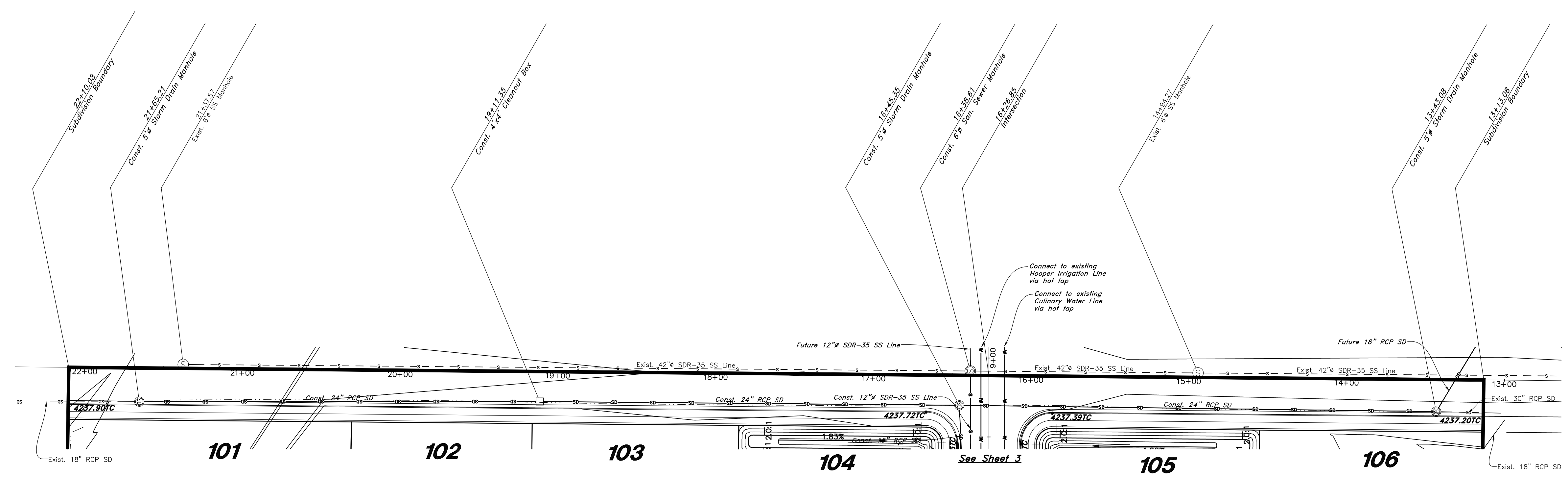
21N700



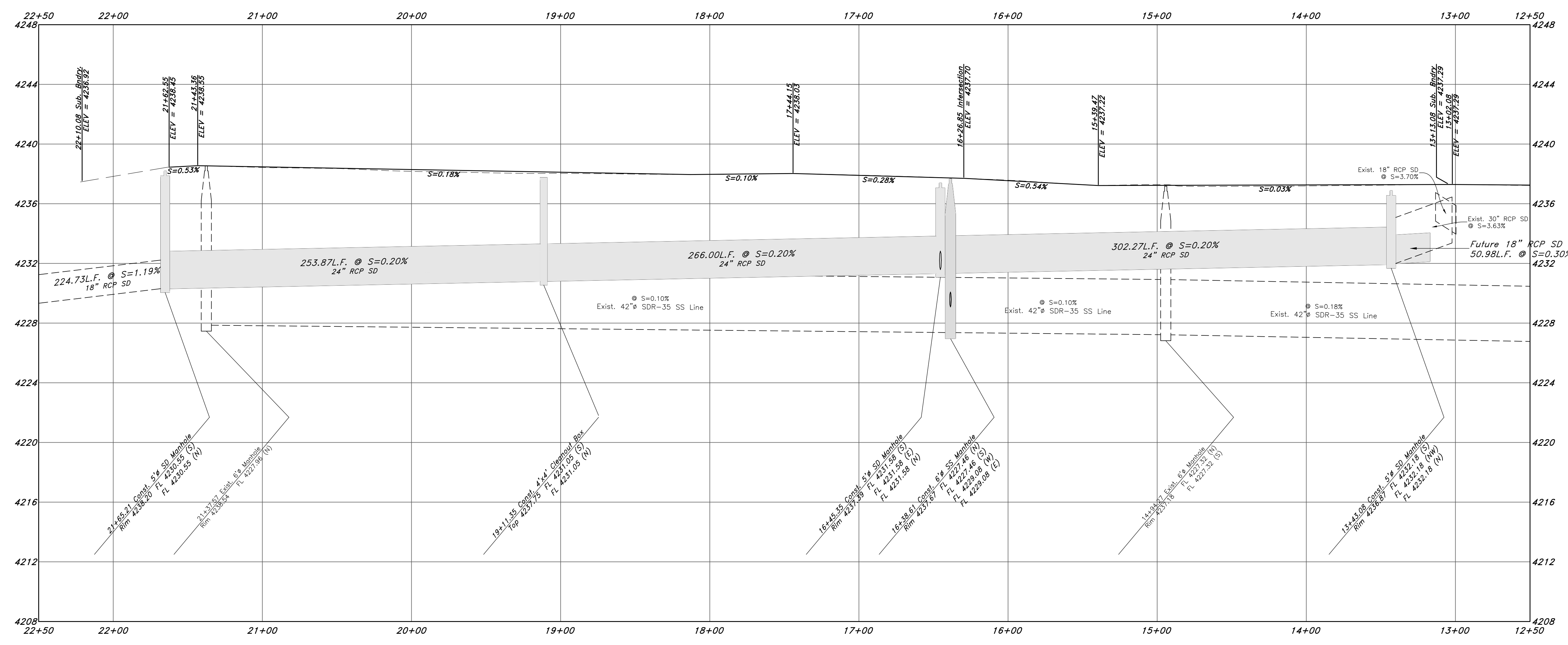
Legend

(Note: All items may not appear on drawing)

- Son. Sewer Manhole
- Water Manhole
- Storm Drain Manhole
- Electrical Manhole
- Catch Basins
- Exist. Fire Hydrant
- Fire Hydrant
- Exist. Water Valve
- Water Valve
- Sanitary Sewer
- Culinary Water
- Gas Line
- Irrigation Line
- Storm Drain
- Telephone Line
- Secondary Waterline
- Power Line
- Fire Line
- Land Drain
- Power pole
- Power pole w/guy
- Light Pole
- Fence
- Flowline of ditch
- Overhead Power line
- Corrugated Metal Pipe
- Concrete Pipe
- RCP
- DI
- PVC
- TA
- EA
- CL
- FL
- Centerline
- Flowline
- Finish Floor
- Top of Curb
- Top of Wall
- Top of Walk
- Top of Concrete
- Natural Ground
- Finish Contour
- Exist. Contour
- Finish Grade
- Ridge Line
- Direction of Flow
- Existing Asphalt
- New Asphalt
- Heavy Duty Asphalt
- Concrete
- Open Face Curb & Gutter



4300 West Street



GREAT BASIN ENGINEERING
 5746 SOUTH 1475 EAST OGDEN, UTAH 84403
 MAIN (801)394-4515 S.L.L.C. (801)521-0222 FAX (801)392-7544
 WWW.GREATBASINENGINEERING.COM

Plan and Profile
Smart Fields
 Approx. 1800 South 4300 West Street
 Ogden City, Weber County, Utah
 A part of Section 21, T6N, R2W, S18&M, U.S. Survey

Detention Pond Exhibit for Smart Fields

Please provide Storm Drain Calcs

Please show details for each pond.

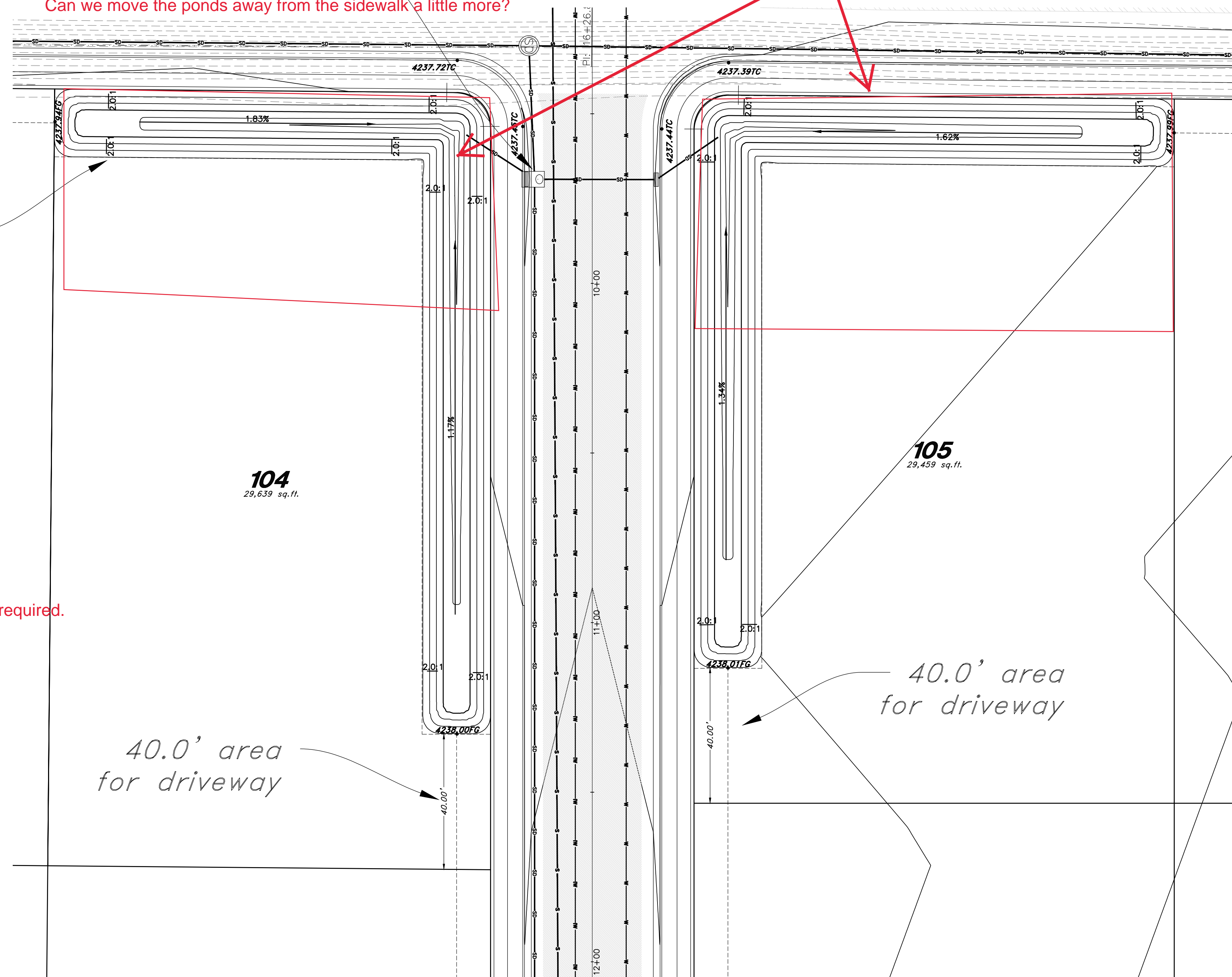
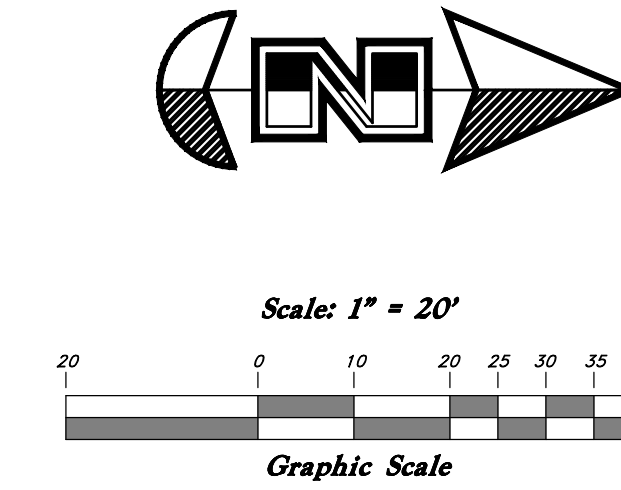
Location of water restricting Orifice Plate

We would prefer the ponds to be just to one side and not along two property lines.

Is it possible to move the ponds to more of a rectangle?

Can we move the ponds away from the sidewalk a little more?

20.0' Drainage Easement



POND NOTES:

1. Pond Designed to accommodate the 100yr storm.
2. Detention Pond Volume Required: 21,965 cf
3. Detention Pond Volume Provided: 22,383 cf
4. Excess Volume: 418 cf
5. Free board: 0.5'
6. Maximum Pond Depth: 4.98' **A minimum of 1' of free board is required.**
7. Pond Side slopes not to exceed 2:1
8. Pond Sides to be rock.
9. Orifice in Orifice Plate to be 4.45" in Diameter, located on western outfall pipe of combo box

NOTES:

1. No access to Lot 104 & 105 from 4300 W.

REV	DATE	DESCRIPTION

GREAT BASIN ENGINEERING
 5746 SOUTH 1475 EAST, OGDEN, UTAH 84403
 WWW.GREATBASINENGINEERING.COM

Pond Exhibit
Smart Fields
 Approx. 1800 South 4300 West Street
 Ogden City, Weber County, Utah
 A part of Section 20, T6N, R21W, SLB&M, U.S. Survey

August 2021

SHEET NO. **C4**

ENGINEER:
 Great Basin Engineering North
 c/o Andy Hubbard, PLS.
 AndyH@greatbasineng.com
 5746 South 1475 East Suite 200
 Ogden, Utah 84405
 (801) 394-4515

DEVELOPER:
 Lync Construction, LLC
 1407 North Mountain Road
 Ogden Utah
 (801)-710-2234