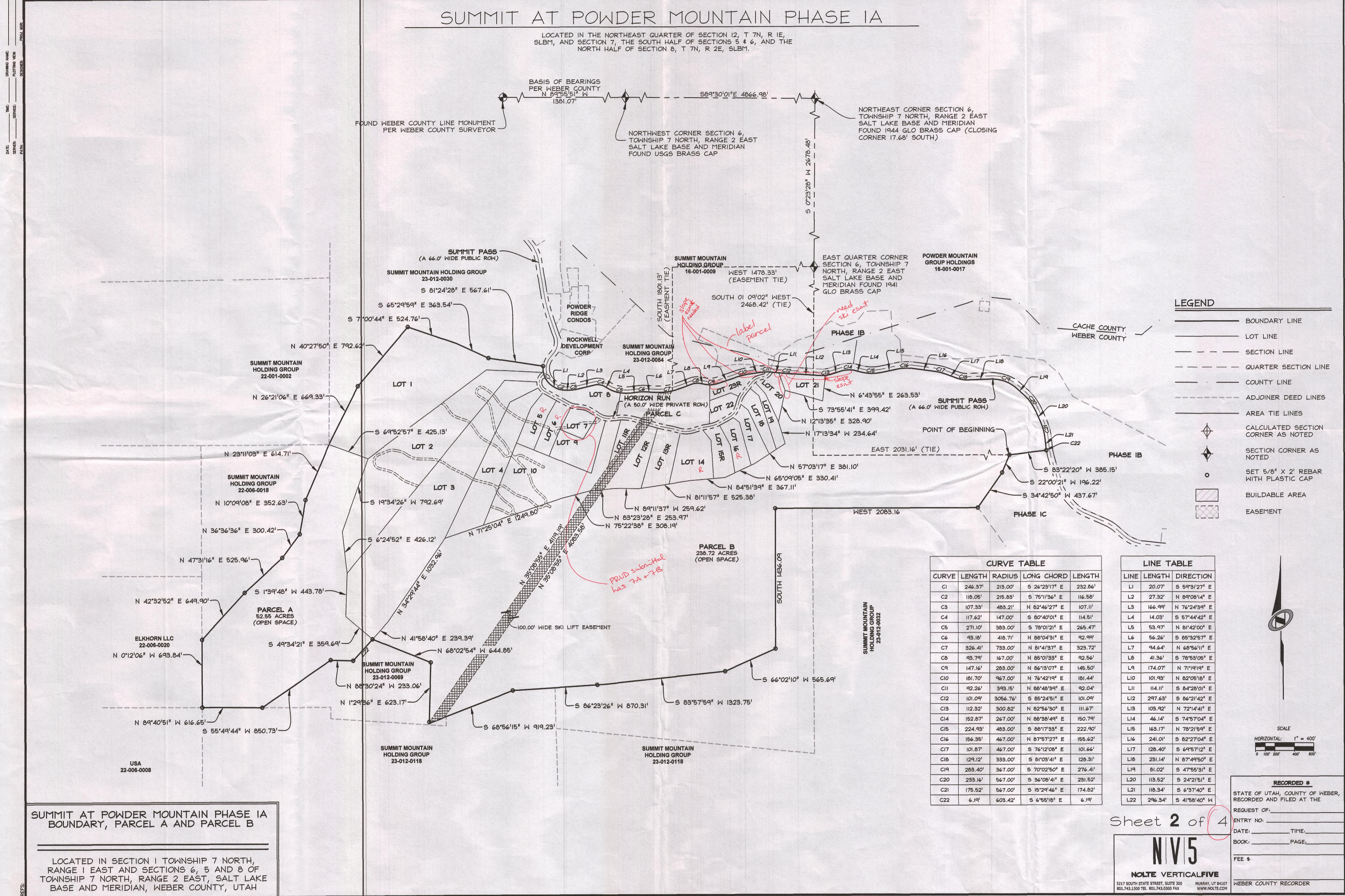


# SUMMIT AT POWDER MOUNTAIN PHASE 1A

LOCATED IN THE NORTHEAST QUARTER OF SECTION 12, T 7N, R 1E, SLBM, AND SECTION 7, THE SOUTH HALF OF SECTIONS 5 & 6, AND THE NORTH HALF OF SECTION 8, T 7N, R 2E, SLBM.



### LEGEND

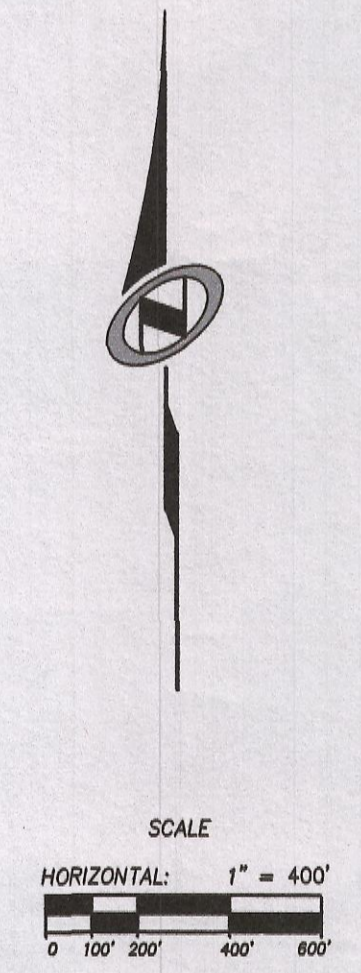
- BOUNDARY LINE
- LOT LINE
- SECTION LINE
- QUARTER SECTION LINE
- COUNTY LINE
- ADJOINER DEED LINES
- AREA TIE LINES
- CALCULATED SECTION CORNER AS NOTED
- SECTION CORNER AS NOTED
- SET 5/8" X 2" REBAR WITH PLASTIC CAP
- BUILDABLE AREA
- EASEMENT

### CURVE TABLE

CURVE	LENGTH	RADIUS	LONG CHORD	LENGTH
C1	246.37'	213.00'	S 26°23'17" E	232.86'
C2	118.05'	215.83'	S 75°11'36" E	116.55'
C3	107.33'	483.21'	N 82°46'27" E	107.11'
C4	117.62'	147.00'	S 80°40'01" E	114.51'
C5	271.10'	383.00'	S 78°01'21" E	265.47'
C6	93.18'	418.71'	N 88°04'31" E	92.99'
C7	326.41'	733.00'	N 81°41'37" E	323.72'
C8	93.79'	167.00'	N 85°01'33" E	92.56'
C9	147.16'	283.00'	N 86°13'07" E	145.50'
C10	181.70'	967.00'	N 76°42'19" E	181.44'
C11	92.26'	393.15'	N 88°48'39" E	92.04'
C12	101.09'	3056.76'	S 85°24'51" E	101.09'
C13	112.32'	300.82'	N 82°56'30" E	111.67'
C14	152.87'	267.00'	N 88°38'49" E	150.79'
C15	224.93'	483.00'	S 88°17'33" E	222.90'
C16	156.35'	467.00'	N 87°57'27" E	155.62'
C17	101.87'	467.00'	S 76°12'08" E	101.66'
C18	129.12'	333.00'	S 81°03'41" E	128.31'
C19	283.40'	367.00'	S 70°02'50" E	276.41'
C20	233.16'	567.00'	S 36°08'41" E	231.52'
C21	175.52'	567.00'	S 15°29'46" E	174.82'
C22	6.19'	603.42'	S 6°55'18" E	6.19'

### LINE TABLE

LINE	LENGTH	DIRECTION
L1	20.07'	S 59°31'27" E
L2	27.32'	N 89°08'14" E
L3	166.99'	N 76°24'39" E
L4	14.03'	S 57°44'42" E
L5	53.97'	N 81°42'00" E
L6	56.26'	S 85°32'57" E
L7	94.64'	N 68°56'11" E
L8	41.36'	S 78°53'05" E
L9	174.07'	N 71°19'19" E
L10	101.93'	N 82°05'18" E
L11	114.11'	S 84°28'01" E
L12	297.63'	S 86°21'42" E
L13	103.92'	N 72°14'41" E
L14	46.14'	S 74°57'04" E
L15	163.17'	N 78°21'59" E
L16	241.01'	S 82°27'04" E
L17	128.40'	S 69°57'12" E
L18	231.14'	N 87°49'50" E
L19	81.02'	S 47°55'31" E
L20	113.52'	S 24°21'51" E
L21	118.34'	S 6°37'40" E
L22	296.34'	S 41°58'40" W



**SUMMIT AT POWDER MOUNTAIN PHASE 1A BOUNDARY, PARCEL A AND PARCEL B**

LOCATED IN SECTION 1 TOWNSHIP 7 NORTH, RANGE 1 EAST AND SECTIONS 6, 5 AND 8 OF TOWNSHIP 7 NORTH, RANGE 2 EAST, SALT LAKE BASE AND MERIDIAN, WEBER COUNTY, UTAH

Sheet 2 of 4

**NIV5**  
**NOLTE VERTICALFIVE**  
 5217 SOUTH STATE STREET, SUITE 300 HURRAY, UT 84107  
 801.743.1300 TEL. 801.743.0300 FAX WWW.NOLTE.COM

**RECORDED #**  
 STATE OF UTAH, COUNTY OF WEBER, RECORDED AND FILED AT THE REQUEST OF:  
 ENTRY NO. \_\_\_\_\_ TIME \_\_\_\_\_  
 DATE: \_\_\_\_\_ PAGE \_\_\_\_\_  
 BOOK: \_\_\_\_\_  
 FEE \$ \_\_\_\_\_  
 WEBER COUNTY RECORDER