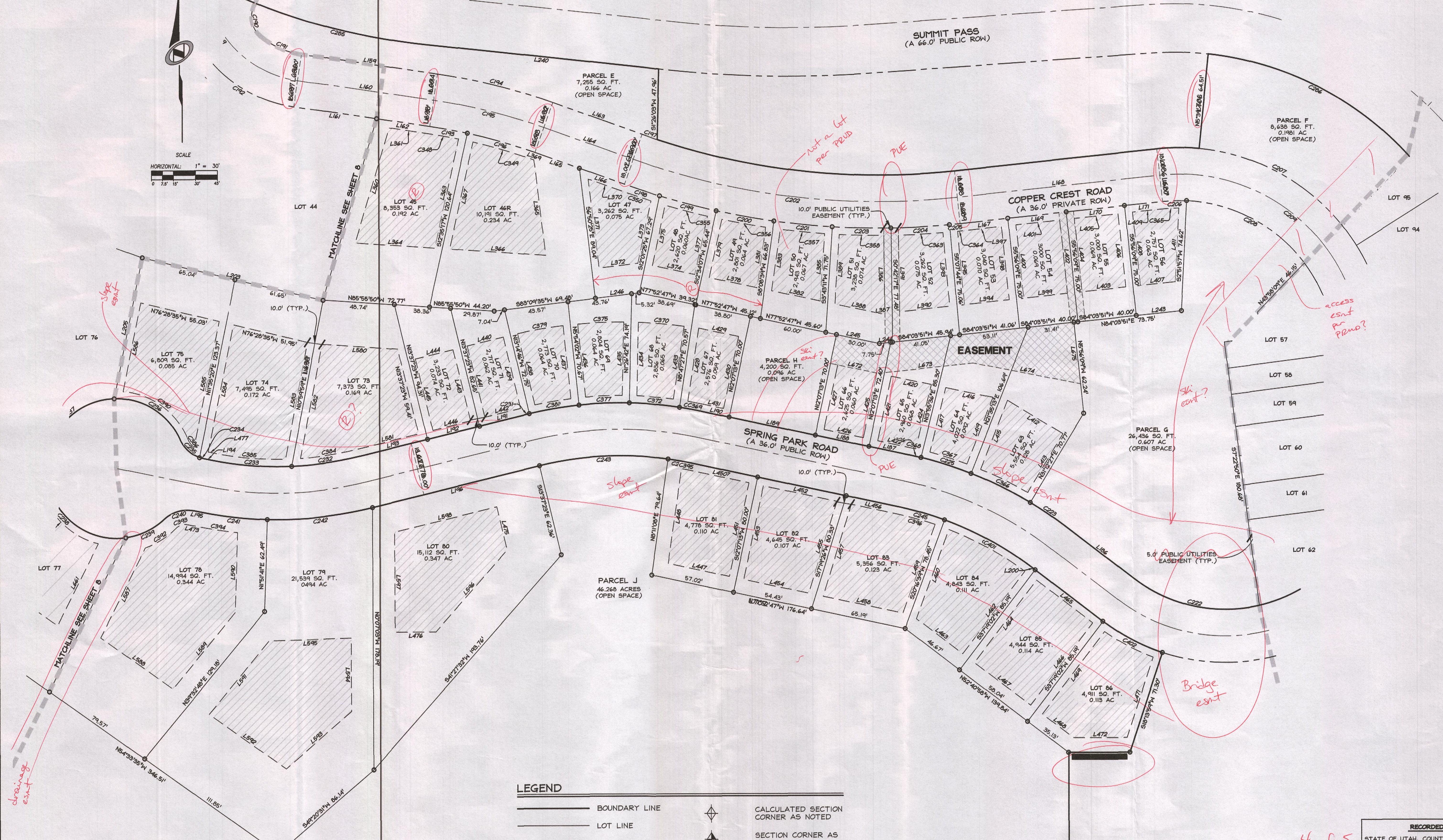
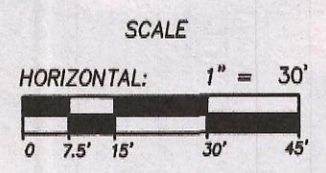
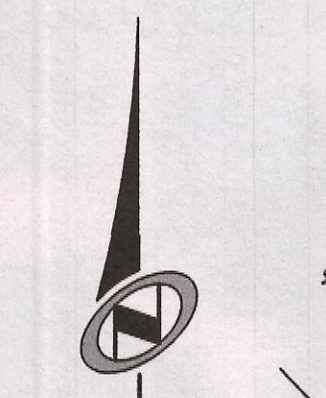


SUMMIT AT POWDER MOUNTAIN PHASE 1C

LOCATED IN THE SOUTH HALF OF SECTION AND THE NORTH HALF OF SECTION 8, T 7N, R 2E, SLBM., WEBER COUNTY, UTAH.

DATE: _____
 DRAWING NAME: _____
 SERVICE: _____
 PLUTING YEAR: _____
 PATE: _____
 REVISIONS: _____
 PULL MARK: _____



SUMMIT AT POWDER MOUNTAIN PHASE 1C
 LOTS 45-56, 63-75, 78-86, & PARCELS E-J

LOCATED IN SECTIONS 5 AND 8 OF TOWNSHIP 7 NORTH, RANGE 2 EAST, SALT LAKE BASE AND MERIDIAN, WEBER COUNTY, UTAH

LEGEND	
	BOUNDARY LINE
	LOT LINE
	SECTION LINE
	QUARTER SECTION LINE
	COUNTY LINE
	ADJOINER DEED LINES
	AREA TIE LINES
	CALCULATED SECTION CORNER AS NOTED
	SECTION CORNER AS NOTED
	SET 5/8" X 2' REBAR WITH PLASTIC CAP
	BUILDABLE AREA
	EASEMENT

4 of 5

Sheet 3 of 6

NIV5

NOLTE VERTICALFIVE

8217 SOUTH STATE STREET, SUITE 300 MURRAY, UT 84107
 801.743.1300 TEL 801.743.0300 FAX WWW.NOLTE.COM

RECORDED #	
STATE OF UTAH, COUNTY OF WEBER, RECORDED AND FILED AT THE	
REQUEST OF:	ENTRY NO.:
DATE:	TIME:
BOOK:	PAGE:
FEE \$	

WEBER COUNTY RECORDER