

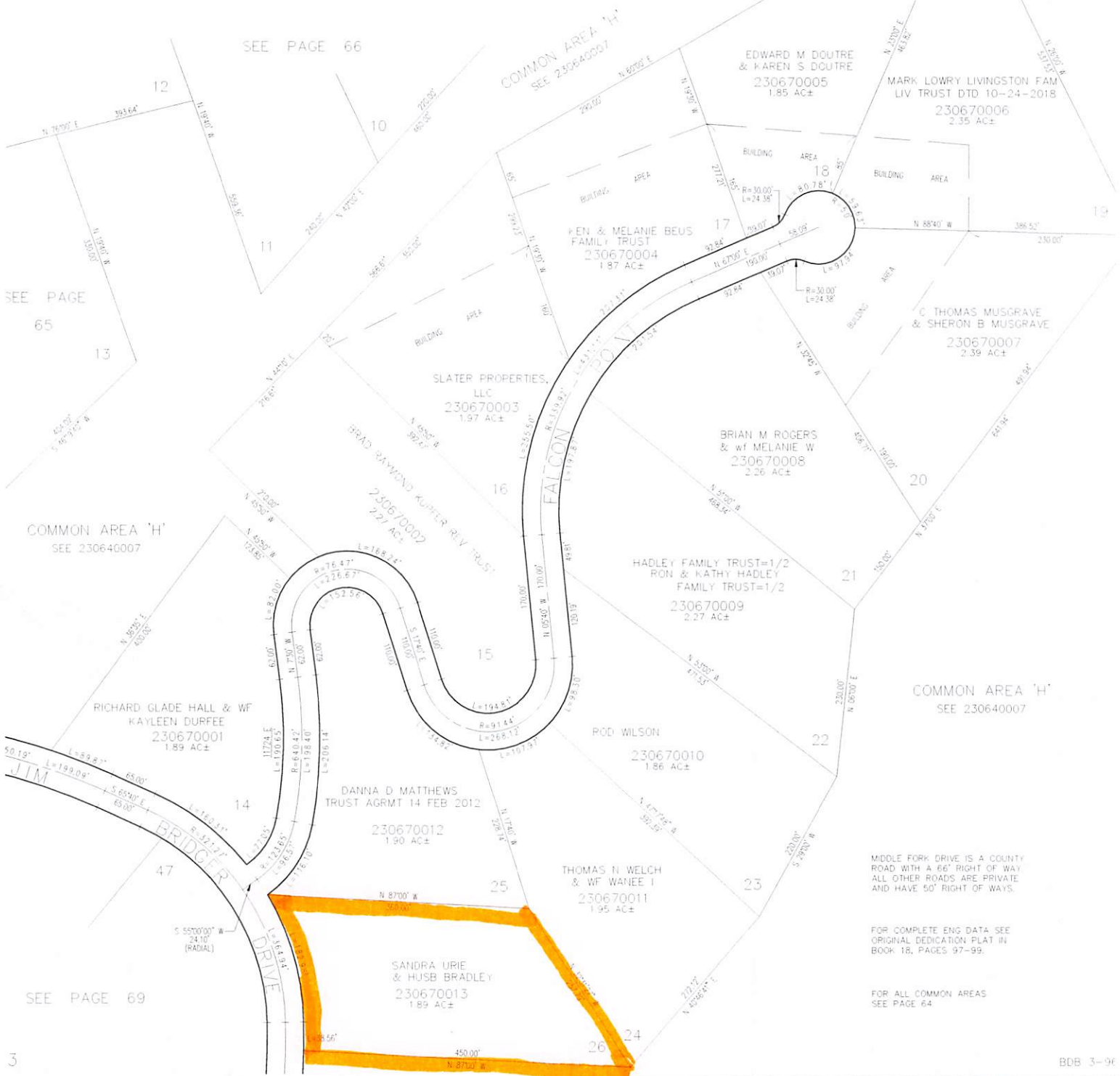
SUNRIDGE HIGHLANDS NO. 1

LOTS 14 TO 26

IN WEBER COUNTY

SCALE 1" = 100'

TAXING UNIT: 520



SEE PAGE 66

SEE PAGE 65

COMMON AREA "H"
SEE 230640007

RICHARD GLADE HALL & WF
KAYLEEN DURFEE
230670001
1.89 AC±

DANNA D MATTHEWS
TRUST AGRMT 14 FEB 2012
230670012
1.90 AC±

SANDRA URIE
& HUSB BRADLEY
230670013
1.89 AC±

COMMON AREA "H"
SEE 230640007

SLATER PROPERTIES,
LLC
230670003
1.97 AC±

BRAD RAYMOND KUPFER REV TRUST
230670002
2.21 AC±

PEN & MELANIE BEUS
FAMILY TRUST
230670004
1.87 AC±

EDWARD M DOUTRE
& KAREN S DOUTRE
230670005
1.85 AC±

MARK LOWRY LIVINGSTON FAM
LIV TRUST DTD 10-24-2018
230670006
2.35 AC±

C THOMAS MUSGRAVE
& SHERON B MUSGRAVE
230670007
2.39 AC±

BRIAN M ROGERS
& wf MELANIE W
230670008
2.26 AC±

HADLEY FAMILY TRUST=1/2
RON & KATHY HADLEY
FAMILY TRUST=1/2
230670009
2.27 AC±

POD WILSON
230670010
1.86 AC±

THOMAS N WELCH
& WF WANEE I
230670011
1.95 AC±

COMMON AREA "H"
SEE 230640007

MIDDLE FORK DRIVE IS A COUNTY
ROAD WITH A 66' RIGHT OF WAY
ALL OTHER ROADS ARE PRIVATE
AND HAVE 50' RIGHT OF WAYS.

FOR COMPLETE ENG DATA SEE
ORIGINAL DEDICATION PLAT IN
BOOK 18, PAGES 97-99.

FOR ALL COMMON AREAS
SEE PAGE 64

SEE PAGE 69

PART OF THE NE 1/4, OF SECTION 36, T 9N, R 2E, S 1B & M
SUNRIDGE HIGHLANDS NO. 1
LOT 27, COMMON AREA H AND H1, 1ST AMENDMENT

124

TAXING UNIT: 58

IN WEBER COUNTY
 SCALE 1" = 100'

SEE PAGE 60

SEE PAGE 67

SEE PAGE 68

SEE PAGE 68

10' UTILITY & DRAINAGE EASEMENTS EACH
 SIDE OF PROPERTY LINES AS INDICATED
 BY DASHED LINES EXCEPT AS OTHERWISE
 SHOWN.

FOR COMPLETE END DATA SEE
 ORIGINAL DEDICATION PLAT IN
 BOOK 67, PAGE 63 OF RECORDS.

