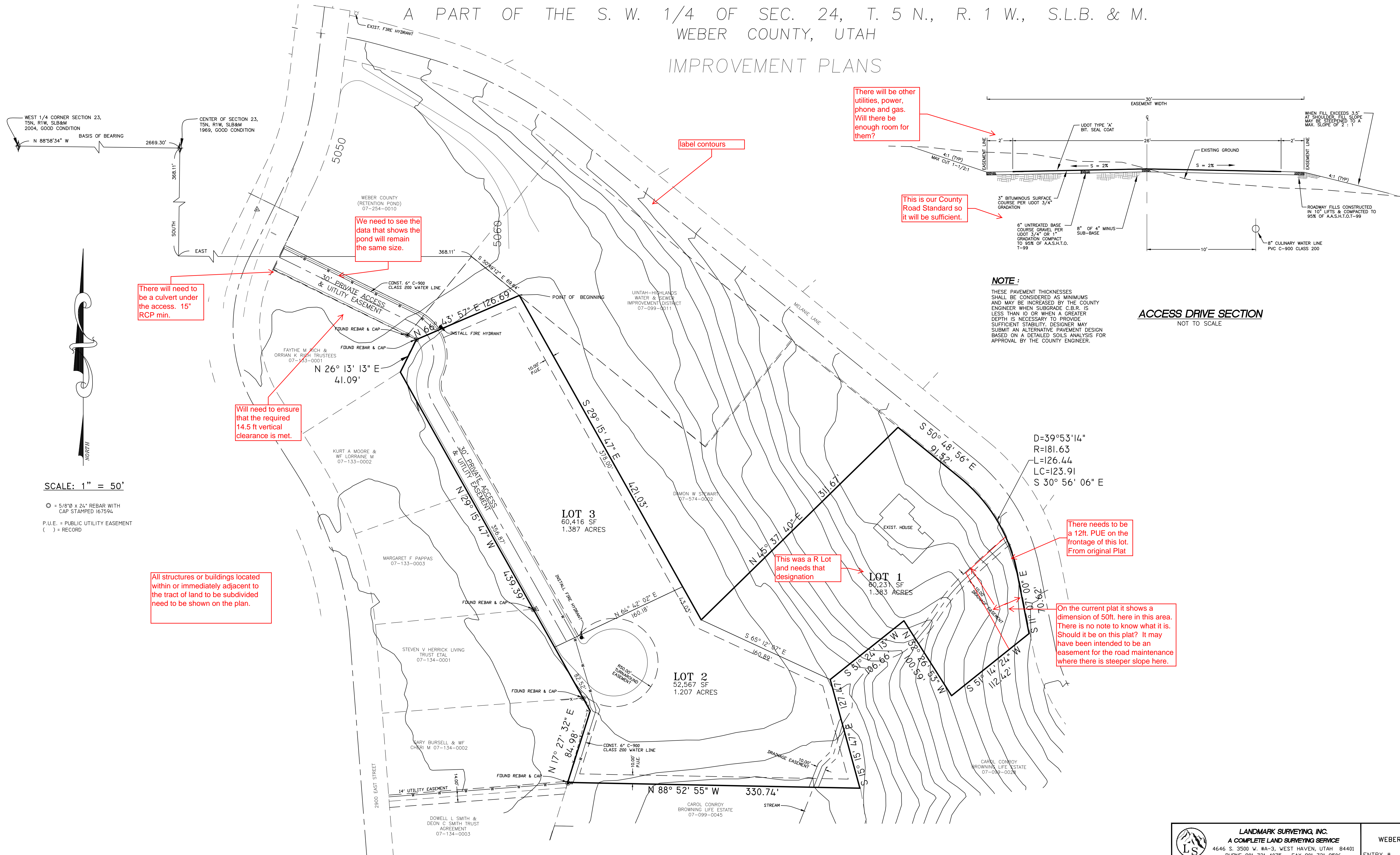


# PAS DE CALAIS SUBDIVISION

A PART OF THE S. W. 1/4 OF SEC. 24, T. 5 N., R. 1 W., S.L.B. & M.  
WEBER COUNTY, UTAH  
IMPROVEMENT PLANS



<b>LANDMARK SURVEYING, INC.</b> A COMPLETE LAND SURVEYING SERVICE 4646 S. 3500 W. #A-3, WEST HAVEN, UTAH 84401 PHONE 801-731-4075 FAX 801-731-8506		WEBER COUNTY RECORDER	
CLIENT: MATT RASMUSSEN		ENTRY # _____ FEE _____	
LOCATION: PART OF THE S.W. 1/4 OF SEC. 24, T.5N., R.1W., S.L.B.&M.		FILED FOR RECORD & RECORDED THIS ____ DAY OF _____ 20__	
SURVEYED: JUNE 2013		AT _____ IN BOOK _____ OF _____ PAGE _____	
REVISIONS:	DRAWN BY: T.K.	WEBER COUNTY RECORDER	
	CHECKED BY: D.B.	BY _____	
	DATE: 6-12-13	DEPUTY	
	FILE: 3236-PAS DE CALAIS		