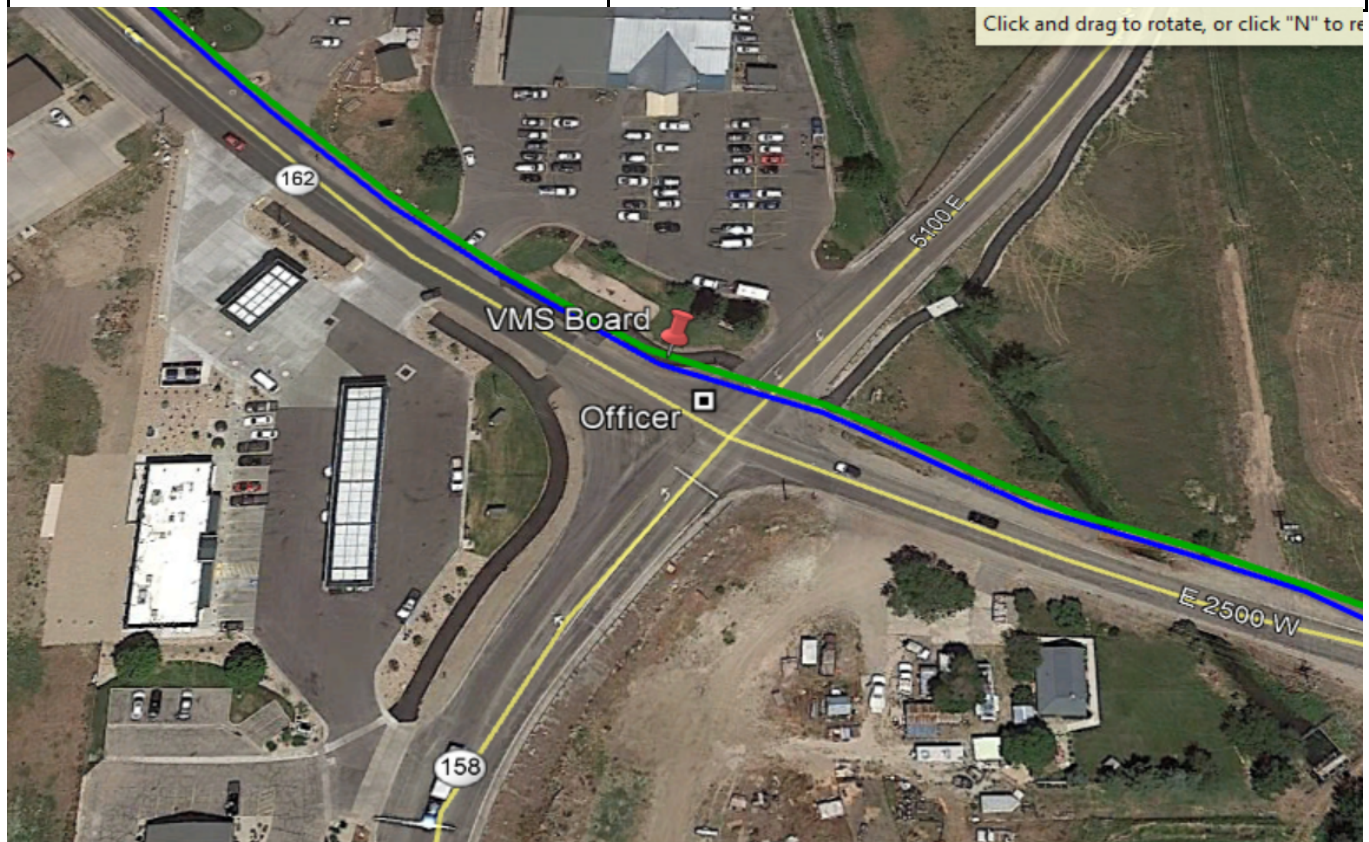


Police/Location	Race Info
Leg	8
Time/Day	June 12, 2021 11:00 AM - 4:00 PM
Location	Intersection of SR 162 and SR 158
Company Name	Weber County Sheriff
Company Contact	Brent Butler, bbutler@co.weber.ut.us
Office Phone	801-778-6614
Race Day Contact Name	
Race Day Contact Cell	
Duty/Instructions	2 officers Stationed at S.R 162 and 158. Helping runners cross 158



Exchange	10
Time/Day	June 12, 2021 12:30 PM - 6:00 PM
Location	Intersection of 500 S and SR 39
Company Name	Weber County Sheriff
Company Contact	Brent Butler, bbutler@co.weber.ut.us
Office Phone	801-778-6614
Race Day Contact Name	
Race Day Contact Cell	
Duty/Instructions	2 officers stationed at S.R 39 and 500 S. Help runners cross S.R 39 heading East on 500 S



Leg	11
Time/Day	June 12, 2021 2:00 PM - 7:00 PM
Location	Intersection of SR167 (Trappers Loop) and SR 39
Company Name	Weber County Sheriff
Company Contact	Brent Butler, bbutler@co.weber.ut.us
Office Phone	801-778-6614
Race Day Contact Name	
Duty/Instructions	Stationed at S.R 39 and Trappers Loop. Help runners cross Trappers loop heading west on SR 39

