



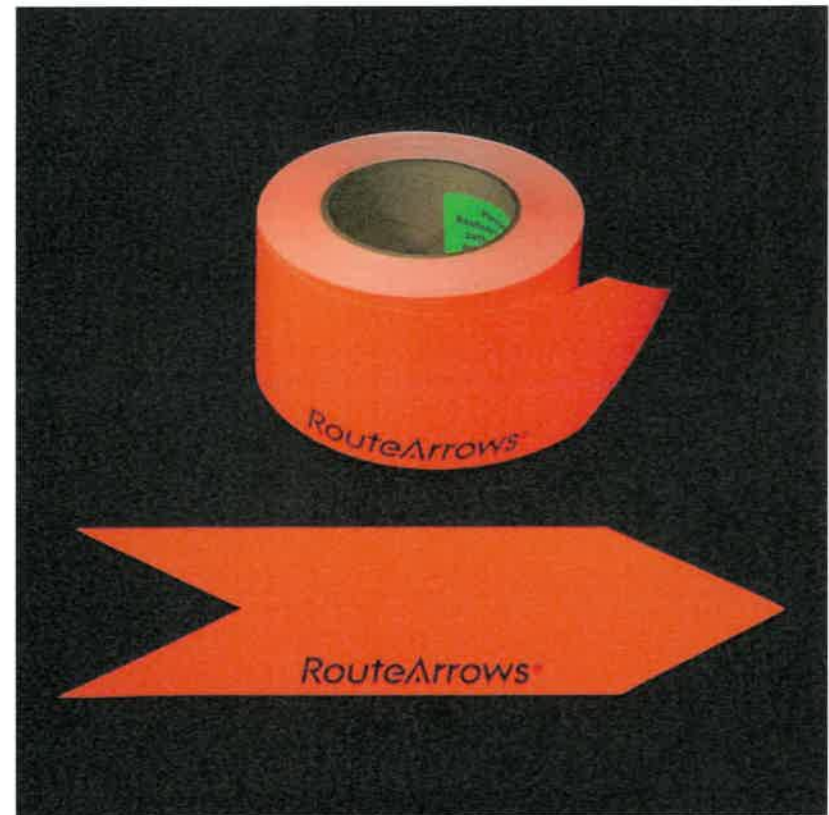
ENVE GRODEO 2021





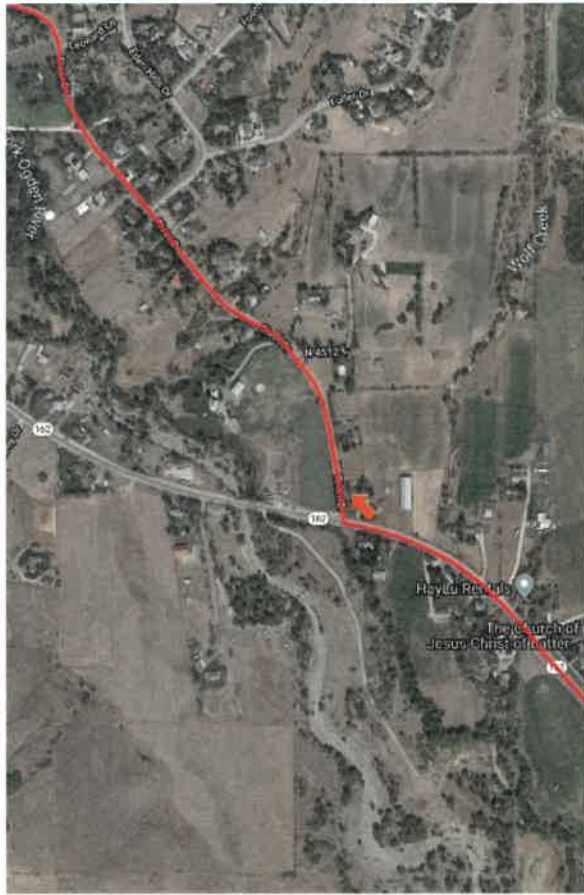
COURSE ARROW INFO

- Riders are required to have GPS for course navigation
- Two arrows will be placed leading up to areas where turns are made on the pavement
 - Approximately 10 locations
 - Approximately 20 arrows
- RouteArrows
 - Color: Red-orange (see pic)
 - Each arrow is 3"x 11.9" (tip to tail)
 - Eco-friendly paper, water-based ink, non-toxic adhesive- temporary and/or removable
 - Can disintegrate in one day if they get wet or in a couple weeks with dry weather and light traffic
 - Color will fade to white from daily sun exposure
 - Will remove after ride if requested





↑ COURSE ARROW MAPS





COURSE ARROW MAPS



