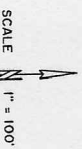


HUNTER PLACE SUBDIVISION
PART OF THE SOUTHWEST QUARTER OF SECTION 28, T. 6 N., R. 2 W., S. L. B. 8 M.
WEBER COUNTY, UTAH
MAY 2001



CURVE DATA table with columns: BEARING, ARC, CHORD, CHORD BRING, POINT OF BEGINNING, POINT OF ENDING, CHORD BEARING, CHORD DISTANCE.

LOT INFORMATION

Table with columns: AREA (SF), ADDRESS, and lot numbers 1 through 13.

TEST HOLE ELEV. table with columns: NO., GROUND TOP WATER, BOTT. DRIV., and elevations for lots 1 through 13.

LOT BEARING and CENTERLINE tables with columns: LOT NO., BEARING, DIST., NO., BEARING, DIST.

SWITCHING CORNER... SOUTHWEST CORNER... (RECORD)

NAME OF WATER TABLE AND DEPTH... VALUE OF WATER... (RECORD)

WEBER-MORGAN HEALTH DEPARTMENT... I HEREBY CERTIFY THAT THE SOILS... (RECORD)

WEBER COUNTY SURVEYOR... I HEREBY CERTIFY THAT THE WEBER COUNTY SURVEYORS OFFICE... (RECORD)

WEBER COUNTY ENGINEER... I HAVE EXAMINED THE FINANCIAL GUARANTEE AND OTHER DOCUMENTS... (RECORD)

WEBER COUNTY ATTORNEY... I HAVE EXAMINED THE FINANCIAL GUARANTEE AND OTHER DOCUMENTS... (RECORD)

CORPORATE ACKNOWLEDGEMENT... STATE OF UTAH... (RECORD)

STATE OF UTAH... I, G. MEL SMITH, A REGISTERED LAND SURVEYOR... (RECORD)

SURVEYOR'S CERTIFICATE... I, G. MEL SMITH, A REGISTERED LAND SURVEYOR IN THE STATE OF UTAH... (RECORD)

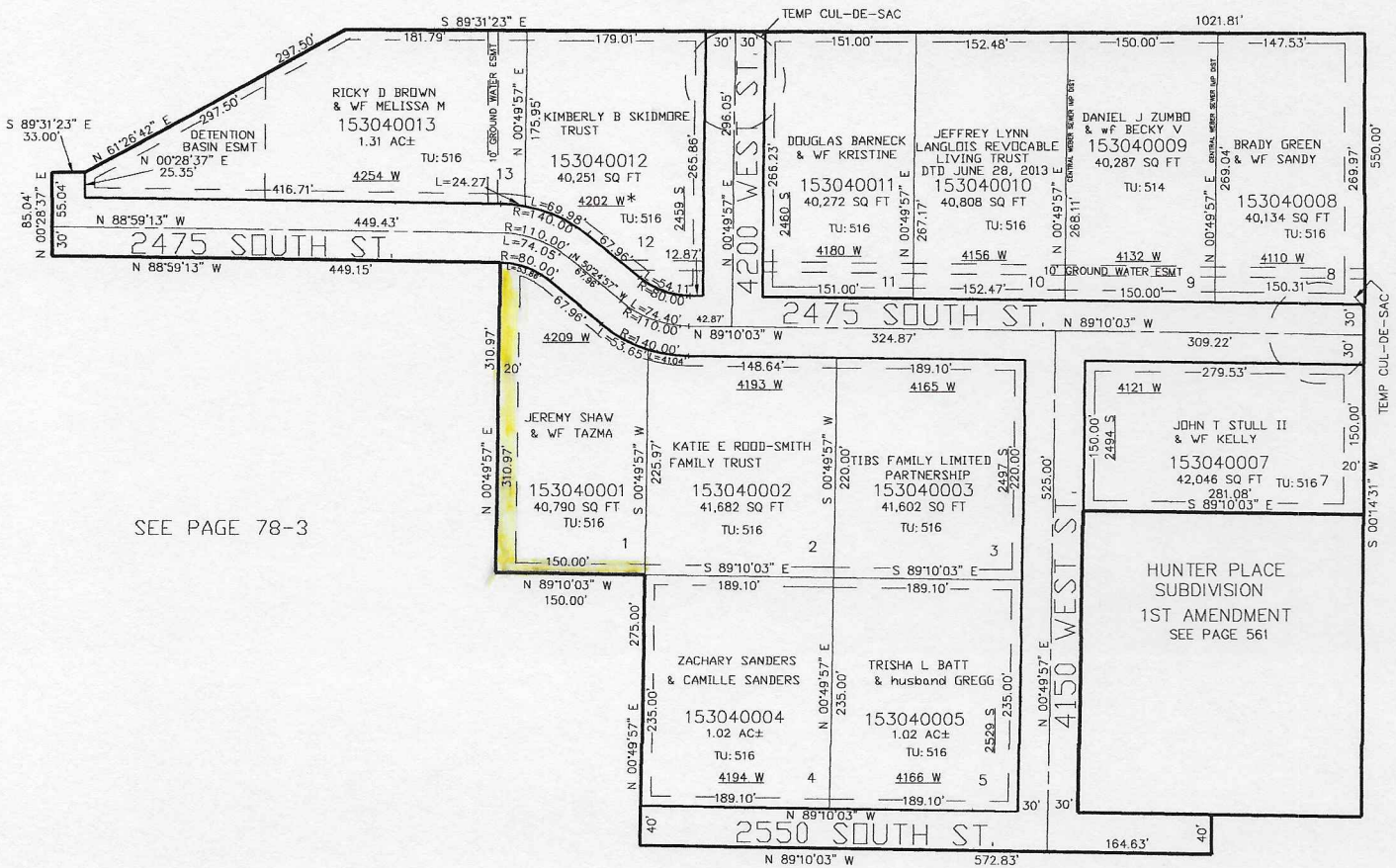
PART OF THE SW 1/4, OF SECTION 28, T.6N., R.2W., S.L.B. & M.
HUNTER PLACE SUBDIVISION

WEBER COUNTY
SCALE 1" = 100'

TAXING UNIT: 514,516

SEE PAGE 78-3

* CORRECTION AFFIDAVIT E#2370021



SEE PAGE 78-3

SEE PAGE 78-3

SEE PAGE 78-3

10' UTILITY & DRAINAGE EASEMENTS EACH SIDE OF PROPERTY LINES AS INDICATED BY DASHED LINES EXCEPT AS OTHERWISE SHOWN.

FOR COMPLETE ENG DATA SEE ORIGINAL DEDICATION PLAT IN BOOK 54, PAGE 21 OF RECORDS.