

LEGEND

- WEBER COUNTY SECTION CORNER
LOT CORNER (SET 1/4 REBAR AND CAP)
BOUNDARY CORNER (SET 1/4 REBAR AND CAP)
P.U.E. PUBLIC UTILITY EASEMENT
STREET MON. (TO BE CONST.)
SECTION LINE
BOUNDARY LINE
LOT LINE
STREET CENTERLINE
EASEMENT LINE
RIGHT OF WAY LINE

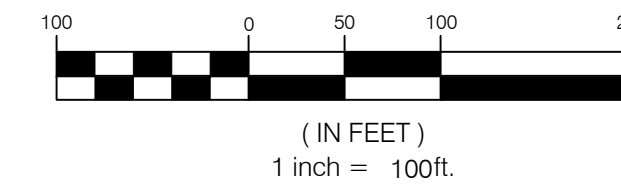
WINSTON PARK SUBDIVISION

LOCATED IN THE NORTHEAST QUARTER OF SECTION 28, TOWNSHIP 6 NORTH NORTH, RANGE 2 WEST, SALT LAKE BASE AND MERIDIAN WEBER COUNTY, UTAH 2021

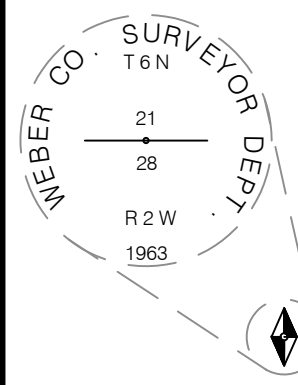
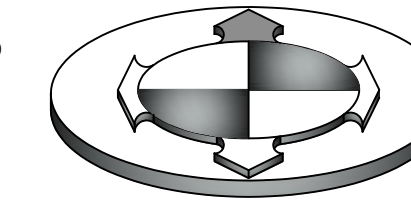
*When street monuments are required, send "Subdivision Monumentation Letter" to developer of Subdivision to notify of the MIA and its associated costs.

Monument Agreement Letter and Payment must be submitted before signing of the plat.

GRAPHIC SCALE



NORTH



NORTH QUARTER CORNER OF SECTION 28, TOWNSHIP 6 NORTH, RANGE 2 WEST (FOUND 3" BRASS CAP MONUMENT SET IN CONCRETE FLUSH WITH ROAD SURFACE. MONUMENT SET IN 1963 BY WEBER COUNTY SURVEYOR DEPARTMENT. GOOD CONDITION)

RAY L. BERTODI, TR PARCEL No. 15-057-0006

JEFFERY & TRUDY EAST PARCEL No. 15-057-0027

JEFFERY & TRUDY EAST PARCEL No. 15-057-0004

WEBER COUNTY BENCHMARK 62121-2-5217 SURVEY BENCHMARK ELEVATION NGVD 88 = 4241.87 (FOUND 3" BRASS CAP SET IN 6" CONCRETE POST. SET IN 1954 BY BUREAU OF RECLAMATION. GOOD CONDITION)

NORTHEAST CORNER OF SECTION 28, TOWNSHIP 6 NORTH, RANGE 2 WEST (FOUND 3" BRASS CAP MONUMENT SET IN CONCRETE 2" BELOW ROAD SURFACE. MONUMENT SET IN 1963 BY WEBER COUNTY SURVEYOR DEPARTMENT. GOOD CONDITION)



1800 SOUTH ST. (PUBLIC ROAD)

S 89°15'08" E 1830.36'

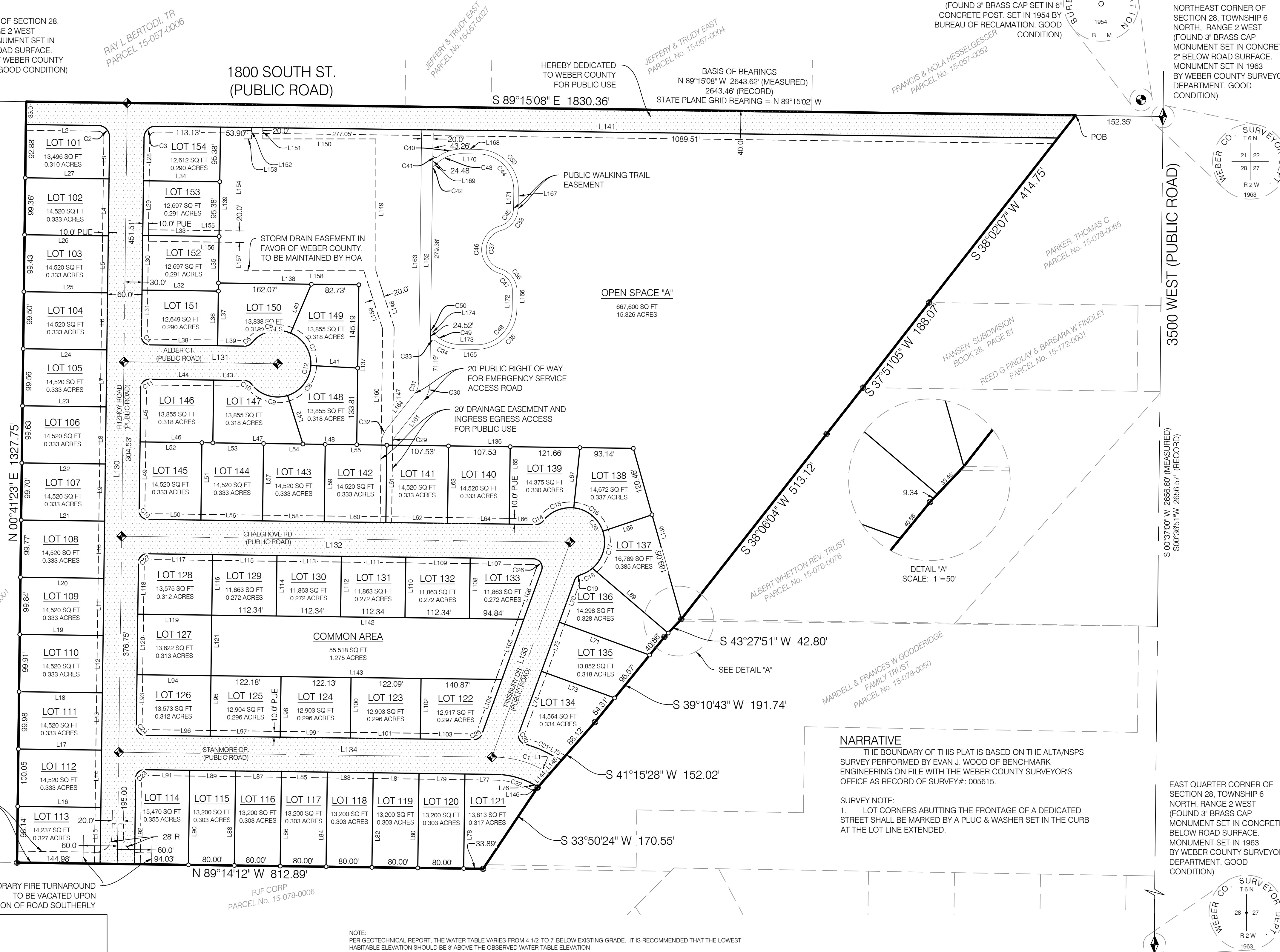
BASIS OF BEARINGS N 89°15'08" W 2643.62' (MEASURED) 2643.46' (RECORD) STATE PLANE GRID BEARING = N 89°15'02" W

WEBER COUNTY BENCHMARK 62121-2-5217 SURVEY BENCHMARK ELEVATION NGVD 88 = 4241.87 (FOUND 3" BRASS CAP SET IN 6" CONCRETE POST. SET IN 1954 BY BUREAU OF RECLAMATION. GOOD CONDITION)

NORTHEAST CORNER OF SECTION 28, TOWNSHIP 6 NORTH, RANGE 2 WEST (FOUND 3" BRASS CAP MONUMENT SET IN CONCRETE 2" BELOW ROAD SURFACE. MONUMENT SET IN 1963 BY WEBER COUNTY SURVEYOR DEPARTMENT. GOOD CONDITION)

NOTES: 1. FOR LOT ADDRESSES SEE PAGE 2

2. AGRICULTURE IS THE PREFERRED USE IN THE AGRICULTURE ZONES. AGRICULTURAL OPERATIONS AS SPECIFIED IN THE LAND USE CODE FOR A PARTICULAR ZONE ARE PERMITTED AT ANY TIME INCLUDING THE OPERATION OF FARM MACHINERY AND NO ALLOWED AGRICULTURAL USE SHALL BE SUBJECT TO RESTRICTIONS ON THE BASIS THAT IT INTERFERES WITH ACTIVITIES OF FUTURE RESIDENTS OF THIS SUBDIVISION." WCO 106-1-8(C)(5).



NARRATIVE

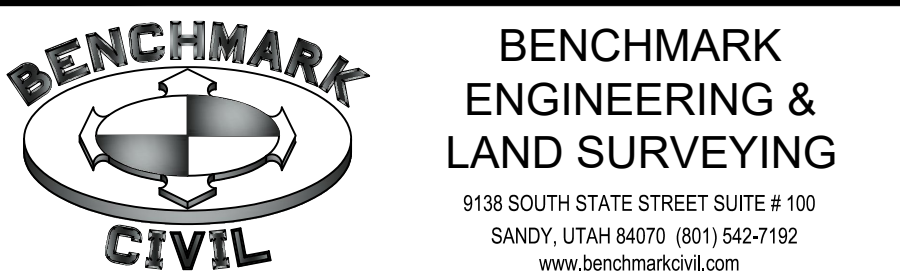
THE BOUNDARY OF THIS PLAT IS BASED ON THE ALTA/NSPS SURVEY PERFORMED BY EVAN J. WOOD OF BENCHMARK ENGINEERING ON FILE WITH THE WEBER COUNTY SURVEYORS OFFICE AS RECORD OF SURVEY#: 005615.

SURVEY NOTE: 1. LOT CORNERS ABUTTING THE FRONTAGE OF A DEDICATED STREET SHALL BE MARKED BY A PLUG & WASHER SET IN THE CURB AT THE LOT LINE EXTENDED.

EAST QUARTER CORNER OF SECTION 28, TOWNSHIP 6 NORTH, RANGE 2 WEST (FOUND 3" BRASS CAP MONUMENT SET IN CONCRETE 1" BELOW ROAD SURFACE. MONUMENT SET IN 1963 BY WEBER COUNTY SURVEYOR DEPARTMENT. GOOD CONDITION)

NOTE: PER GEOTECHNICAL REPORT, THE WATER TABLE VARIES FROM 4 1/2 TO 7' BELOW EXISTING GRADE. IT IS RECOMMENDED THAT THE LOWEST HABITABLE ELEVATION SHOULD BE 9' ABOVE THE OBSERVED WATER TABLE ELEVATION

OWNER / DEVELOPER: NAME: IGOR MAKSYMIW TELEPHONE: (801) 209-6759 IGORMAKSYMIW@AOL.COM



WEBER COUNTY SURVEYOR I HEREBY CERTIFY THAT THE WEBER COUNTY SURVEYORS OFFICE HAS REVIEWED THIS PLAT AND ALL CONDITIONS FOR APPROVAL BY THIS OFFICE HAVE BEEN SATISFIED. THE APPROVAL OF THIS PLAT BY THE WEBER COUNTY SURVEYOR DOES NOT RELIEVE THE LICENSED LAND SURVEYOR WHO EXECUTED THIS PLAT FROM THE RESPONSIBILITIES AND/OR LIABILITIES ASSOCIATED THEREWITH. SIGNED THIS DAY OF 2021.

WEBER COUNTY PLANNING COMMISSION ACCEPTANCE THIS IS TO CERTIFY THAT THIS SUBDIVISION PLAT WAS DULY APPROVED BY THE WEBER COUNTY, PLANNING COMMISSION ON THE DAY OF 2021

WEBER COUNTY ENGINEER I HEREBY CERTIFY THAT THE REQUIRED PUBLIC IMPROVEMENT STANDARDS AND DRAWINGS FOR THIS SUBDIVISION CONFORM WITH THE COUNTY STANDARDS AND THE AMOUNT OF THE FINANCIAL GUARANTEE IS SUFFICIENT FOR THE INSTALLATION OF THESE IMPROVEMENTS. SIGNED THIS DAY OF 2021

WEBER COUNTY COMMISSION ACCEPTANCE THIS IS TO CERTIFY THAT THIS SUBDIVISION PLAT, THE DEDICATION OF STREETS AND OTHER OTHER PUBLIC WORKS AND FINANCIAL GUARANTEE OF PUBLIC IMPROVEMENTS ASSOCIATED WITH THIS SUBDIVISION, THEREON ARE HEREBY APPROVED AND ACCEPTED BY THE COMMISSIONERS OF WEBER COUNTY, UTAH THIS DAY OF 2021

WEBER COUNTY ATTORNEY I HAVE EXAMINED THE FINANCIAL GUARANTEE AND OTHER DOCUMENTS ASSOCIATED WITH THIS SUBDIVISION PLAT AND IN MY OPINION THEY CONFORM WITH THE COUNTY ORDINANCE APPLICABLE THERETO AND NOW IN FORCE AND AFFECT. SIGNED THIS DAY OF 2021

WEBER COUNTY RECORDER ENTRY NO. FEE PAID. FILED FOR RECORD AND RECORDED AT BOOK OF OFFICIAL RECORDS. PAGE RECORDED FOR: WEBER COUNTY RECORDER DEPUTY

SURVEYOR'S CERTIFICATE

I, BRIAN A. LINAM DO HEREBY CERTIFY THAT I AM A LICENSED PROFESSIONAL LAND SURVEYOR, IN THE STATE OF UTAH IN ACCORDANCE WITH TITLE 58, CHAPTER 22, PROFESSIONAL ENGINEERS AND LAND SURVEYORS ACT, AND THAT I HOLD CERTIFICATE NO. 7240531; AND THAT I HAVE COMPLETED A SURVEY OF THE PROPERTY DESCRIBED ON THIS PLAT IN ACCORDANCE WITH SECTION 17-23-17 AND HAVE VERIFIED ALL MEASUREMENTS, AND HAVE PLACED MONUMENTS AS REPRESENTED ON THIS PLAT ON THIS PLAT, AND THAT THIS PLAT OF WINSTON PARK SUBDIVISION IN WEBER COUNTY, UTAH, HAS BEEN DRAWN CORRECTLY TO THE DESIGNATED SCALE AND IS A TRUE AND CORRECT REPRESENTATION OF THE HEREIN DESCRIBED LANDS INCLUDED IN SAID SUBDIVISION, BASED UPON DATA COMPILED FROM RECORDS IN THE WEBER COUNTY RECORDERS OFFICE AND FROM SAID SURVEY MADE BY ME ON THE GROUND. I FURTHER CERTIFY THAT THE REQUIREMENTS OF ALL APPLICABLE STATUTES AND ORDINANCES OF WEBER COUNTY CONCERNING ZONING REQUIREMENTS REGARDING LOT MEASUREMENTS HAVE BEEN COMPILED WITH.

WINSTON PARK SUBDIVISION

BOUNDARY DESCRIPTION BEGINNING AT A POINT ON THE EXISTING FENCE LINE EXTENDED DEFINED AS THE WESTERLY BANK OF A SLOUGH, SAID POINT BEING NORTH 89°15'08" WEST ALONG THE QUARTER SECTION LINE 152.35 FEET FROM THE NORTHEAST CORNER OF SECTION 28, TOWNSHIP 6 NORTH, RANGE 2 WEST, SALT LAKE BASE AND MERIDIAN AND RUNNING THENCE ALONG SAID EXISTING FENCE AND WESTERLY BANK OF SAID SLOUGH THE FOLLOWING SEVEN (7) COURSES: 1) SOUTH 38°02'07" WEST 414.75 FEET; 2) SOUTH 37°51'05" WEST 188.07 FEET; 3) SOUTH 38°06'04" WEST 513.12 FEET; 4) SOUTH 43°27'51" WEST 42.80 FEET; 5) SOUTH 39°10'43" WEST 191.74 FEET; 6) SOUTH 41°15'28" WEST 152.02 FEET; 7) SOUTH 33°50'24" WEST 170.55 FEET TO A POINT ON THE 40 ACRE LINE; THENCE NORTH 89°14'12" WEST 812.89 FEET ALONG SAID 40 ACRE LINE; THENCE NORTH 00°41'23" EAST 1327.75 FEET TO THE QUARTER SECTION LINE; THENCE SOUTH 89°15'08" EAST ALONG SAID QUARTER SECTION LINE 1830.36 FEET TO THE POINT OF BEGINNING.

CONTAINS 40.259 ACRES 54 RESIDENTIAL LOTS & 2 OPEN SPACES Common Area & Open Space

OWNERS DEDICATION WE THE UNDERSIGNED OWNERS OF THE HEREIN DESCRIBED TRACT OF LAND, DO HEREBY SET APART AND SUBDIVIDE THE SAME INTO LOTS AND STREETS AS SHOWN ON THE PLAT AND NAME SAID TRACT, WINSTON PARK SUBDIVISION, AND DO HEREBY DEDICATE, FOR PERPETUAL USE OF THE PUBLIC ALL PARCELS OF LAND, TRAILS AND ROADS INTENDED FOR PUBLIC USE AND ALSO TO GRANT AND DEDICATE A PERPETUAL RIGHT AND EASEMENT OVER, UPON AND UNDER THE LANDS DESIGNATED HEREON AS PUBLIC UTILITY EASEMENTS, STORM WATER DETENTION PONDS, SEWER EASEMENTS, AND DRAINAGE EASEMENTS; THE SAME TO BE USED FOR THE INSTALLATION, MAINTENANCE, AND OPERATION OF PUBLIC UTILITY SERVICE LINE, AND STORM DRAINAGE FACILITIES, WITH NO BUILDINGS OR STRUCTURES BEING ERRECTED WITHIN SUCH EASEMENTS, AND DO ALSO HEREBY DEDICATE AND GRANT TO WEBER COUNTY A PERPETUAL RIGHT AND EASEMENT ON AND OVER OPEN SPACE PARCELS TO GUARANTEE TO WEBER COUNTY THAT SAID OPEN SPACE PARCELS REMAIN OPEN AND UNDEVELOPED, AND OPEN SPACE PURPOSES.

AND DO ALSO GRANT AND CONVEY TO THE SUBDIVISION LOT OWNERS ASSOCIATION, ALL THOSE PARTS OR PORTIONS OF SAID TRACT OF LAND DESIGNATED AS COMMON AREAS TO BE USED FOR RECREATIONAL AND OPEN SPACE PURPOSES FOR THE BENEFIT OF EACH LOT OWNERS ASSOCIATION MEMBER IN COMMON WITH ALL OTHERS IN THE SUBDIVISION AND GRANT AND DEDICATE TO THE COUNTY A PERPETUAL OPEN SPACE RIGHT AND EASEMENT ON AND OVER THE COMMON AREAS TO GUARANTEE TO WEBER COUNTY THAT THE COMMON AREAS REMAIN OPEN AND UNDEVELOPED EXCEPT FOR APPROVED RECREATIONAL, PARKING AND OPEN SPACE PURPOSES.

SIGNED THIS DAY OF 2021

WINSTON PARK SUBDIVISION

ACKNOWLEDGMENT WADE RUMSEY State of County of } S.S.

ON THE DAY OF 20 PERSONALLY APPEARED BEFORE ME, THE UNDERSIGNED NOTARY PUBLIC, WADE RUMSEY, OF THE ABOVE OWNERS DEDICATION AND CERTIFICATION, WHO BEING BY ME DULY SWORN, DID ACKNOWLEDGE TO ME THAT HE SIGNED IT FREELY, VOLUNTARILY, AND FOR THE PURPOSES THEREIN MENTIONED.

MY COMMISSION NUMBER: NOTARY PUBLIC (PRINT NAME) MY COMMISSION EXPIRES: NOTARY PUBLIC RESIDING IN COUNTY

WINSTON PARK SUBDIVISION LOCATED IN THE NORTHEAST QUARTER OF SECTION 28, TOWNSHIP 6 NORTH NORTH, RANGE 2 WEST, SALT LAKE BASE AND MERIDIAN WEBER COUNTY, UTAH MARCH, 2021

WINSTON PARK SUBDIVISION

LOCATED IN THE NORTHEAST QUARTER OF SECTION 28,
TOWNSHIP 6 NORTH NORTH, RANGE 2 WEST,
SALT LAKE BASE AND MERIDIAN
WEBER COUNTY, UTAH
2021



VICINITY MAP
SCALE: N.T.S.

CURVE TABLE					
CURVE #	LENGTH	RADIUS	DELTA	CHORD BEARING	CHORD DISTANCE
C1	77.39	170.00	26°04'54"	N 76°11'45" W	76.72'
C2	31.42	20.00	90°00'00"	N 44°15'08" W	28.28'
C3	31.42	20.00	90°00'00"	S 45°44'52" W	28.28'
C4	23.56	15.00	90°00'00"	S 44°15'08" E	21.21'
C5	13.60	15.00	51°56'37"	N 64°46'33" E	13.14'
C6	75.07	58.00	74°09'36"	S 75°53'03" W	69.94'
C7	70.98	58.00	70°06'57"	N 31°58'41" W	66.63'
C8	70.33	58.00	69°28'26"	N 37°49'01" E	66.10'
C9	71.00	58.00	70°08'15"	S 72°22'39" E	66.65'
C10	13.60	15.00	51°56'37"	N 63°16'50" W	13.14'
C11	23.56	15.00	90°00'00"	S 45°44'52" W	21.21'
C12	287.38	58.00	283°53'13"	N 00°44'52" E	71.51'
C13	23.56	15.00	90°00'00"	S 44°15'08" E	21.21'
C14	13.91	15.00	53°07'48"	N 64°10'57" E	13.42'
C15	61.00	60.00	58°15'11"	S 66°44'39" W	58.41'
C16	68.77	60.00	65°40'01"	N 51°17'46" W	65.06'
C17	71.36	60.00	68°08'43"	N 15°36'37" E	67.23'
C18	24.58	60.00	23°28'25"	N 61°25'11" E	24.41'
C19	13.91	15.00	53°07'48"	S 46°35'29" W	13.42'
C20	24.81	15.00	94°46'35"	S 27°21'43" E	22.08'
C21	40.47	200.00	11°35'42"	N 68°57'09" W	40.41'
C22	63.73	140.00	26°04'54"	N 76°11'45" W	63.18'
C23	23.57	15.00	90°00'57"	S 45°45'20" W	21.22'
C24	23.56	15.00	89°59'03"	S 44°14'40" E	21.21'
C25	18.52	15.00	70°44'14"	N 55°23'42" E	17.37'
C26	28.61	15.00	109°16'43"	N 34°36'47" W	24.47'
C27	23.56	15.00	90°00'00"	S 45°44'52" W	21.21'
C28	225.71	60.00	215°32'20"	N 34°36'47" W	114.28'
C29	18.43	28.00	37°42'19"	S 19°36'01" W	18.10'
C30	31.59	48.00	37°42'19"	N 19°36'01" E	31.02'
C31	18.43	28.00	37°42'19"	N 19°36'01" E	18.10'
C32	31.59	48.00	37°42'19"	S 19°36'01" W	31.02'
C33	11.11	5.00	127°17'04"	S 64°23'23" W	8.96'
C34	45.55	70.00	37°17'02"	S 70°36'37" E	44.75'
C35	109.96	70.00	90°00'00"	N 45°44'52" E	98.99'
C36	52.00	40.00	74°28'45"	N 36°29'31" W	48.41'
C37	90.32	34.74	148°57'29"	S 00°44'52" W	66.95'
C38	52.00	40.00	74°28'45"	N 37°59'14" E	48.41'
C39	109.96	70.00	90°00'00"	N 44°15'08" W	98.99'
C40	45.48	70.00	37°13'40"	S 72°08'02" W	44.69'
C41	11.10	5.00	127°13'40"	S 62°51'58" E	8.96'
C42	3.93	5.00	45°00'03"	S 23°14'50" W	3.83'
C43	48.69	62.00	45°00'00"	S 68°14'52" W	47.45'
C44	97.39	62.00	90°00'00"	N 44°15'08" W	87.68'
C45	41.60	32.00	74°28'45"	N 37°59'14" E	38.73'
C46	111.12	42.74	148°57'29"	S 00°44'52" W	82.37'
C47	41.60	32.00	74°28'45"	N 36°29'31" W	38.73'
C48	97.39	62.00	90°00'00"	N 45°44'52" E	87.68'
C49	48.82	62.00	45°06'54"	S 66°41'41" E	47.57'
C50	3.92	5.00	44°53'06"	S 21°41'41" E	3.82'

PARCEL LINE TABLE		
LINE #	BEARING	DISTANCE
L1	S 63°09'18" E	22.14'
L2	S 89°15'08" E	126.28'
L3	S 00°44'52" W	72.88'
L4	S 00°44'52" W	99.36'
L5	S 00°44'52" W	99.43'
L6	S 00°44'52" W	99.50'
L7	S 00°44'52" W	99.56'
L8	S 00°44'52" W	99.63'
L9	S 00°44'52" W	99.70'
L10	S 00°44'52" W	99.77'
L11	S 00°44'52" W	99.84'
L12	S 00°44'52" W	99.91'
L13	S 00°44'52" W	99.98'
L14	S 00°44'52" W	100.05'
L15	S 00°44'52" W	98.18'
L16	N 89°15'08" W	145.08'
L17	S 89°15'08" E	145.18'
L18	N 89°15'08" W	145.28'
L19	S 89°15'08" E	145.38'
L20	N 89°15'08" W	145.48'
L21	S 89°15'08" E	145.58'
L22	N 89°15'08" W	145.68'
L23	S 89°15'08" E	145.79'
L24	N 89°15'08" W	145.89'
L25	S 89°15'08" E	145.99'
L26	N 89°15'08" W	146.09'
L27	S 89°15'08" E	146.19'
L28	S 00°44'52" W	75.38'
L29	S 00°44'52" W	95.38'
L30	S 00°44'52" W	95.38'
L31	S 00°44'52" W	80.38'
L32	S 89°15'08" E	133.13'
L33	S 89°15'08" E	133.13'
L34	S 89°15'08" E	133.13'
L35	S 00°44'52" W	95.38'
L36	S 00°44'52" W	95.38'
L37	S 00°44'52" W	109.50'
L38	S 89°15'08" E	118.13'
L39	S 89°15'08" E	47.61'
L40	N 22°57'51" E	92.69'

PARCEL LINE TABLE		
LINE #	BEARING	DISTANCE
L41	S 86°55'12" E	81.83'
L42	S 17°26'47" E	88.84'
L43	S 89°15'08" E	53.77'
L44	S 89°15'08" E	111.97'
L45	S 00°44'52" W	94.50'
L46	S 89°15'08" E	126.97'
L47	S 89°15'08" E	157.10'
L48	S 89°15'08" E	93.86'
L49	S 00°44'52" W	120.03'
L50	N 89°15'08" W	92.89'
L51	S 00°44'52" W	135.03'
L52	S 89°15'08" E	107.89'
L53	S 89°15'08" E	107.53'
L54	N 89°15'08" W	107.53'
L55	N 89°15'08" W	107.53'
L56	N 89°15'08" W	107.53'
L57	S 00°44'52" W	135.03'
L58	N 89°15'08" W	107.53'
L59	S 00°44'52" W	135.03'
L60	N 89°15'08" W	107.53'
L61	S 00°44'52" W	135.03'
L62	N 89°15'08" W	107.53'
L63	S 00°44'52" W	135.03'
L64	N 89°15'08" W	107.53'
L65	S 00°44'52" W	135.03'
L66	N 89°15'08" W	46.87'
L67	N 05°52'14" E	105.69'
L68	S 71°32'15" W	90.42'
L69	S 49°27'36" E	173.69'
L70	N 20°01'35" E	77.72'
L71	N 69°58'25" W	167.70'
L72	N 20°01'35" E	91.22'
L73	N 69°58'25" W	136.01'
L74	N 20°01'35" E	114.23'
L75	S 63°09'18" E	29.85'
L76	S 63°09'18" E	14.43'
L77	S 89°14'12" E	53.73'
L78	S 00°45'48" W	165.00'
L79	S 89°14'12" E	80.00'
L80	N 00°45'48" E	165.00'

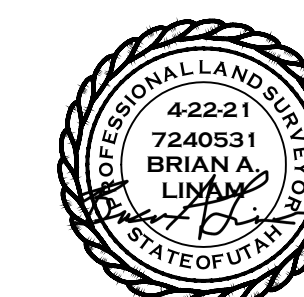
PARCEL LINE TABLE		
LINE #	BEARING	DISTANCE
L81	S 89°14'12" E	80.00'
L82	S 00°45'48" W	165.00'
L83	S 89°14'12" E	80.00'
L84	N 00°45'48" E	165.00'
L85	S 89°14'12" E	80.00'
L86	S 00°45'48" W	165.00'
L87	S 89°14'12" E	80.00'
L88	N 00°45'48" E	165.00'
L89	S 89°14'12" E	80.00'
L90	S 00°45'48" W	165.00'
L91	S 89°14'12" E	79.07'
L92	S 00°44'52" W	150.00'
L93	S 00°44'52" W	90.57'
L94	N 89°15'08" W	129.00'
L95	S 00°44'52" W	105.60'
L96	S 89°14'12" E	114.02'
L97	S 89°14'12" E	122.18'
L98	S 00°44'52" W	105.63'
L99	S 89°14'12" E	122.13'
L100	S 00°44'52" W	105.67'
L101	S 89°14'12" E	122.09'
L102	S 00°44'52" W	105.70'
L103	S 89°14'12" E	93.25'
L104	N 20°01'35" E	101.36'
L105	N 20°01'35" E	111.87'
L106	N 20°01'35" E	90.74'
L107	N 89°15'08" W	110.64'
L108	S 00°44'52" W	105.60'
L109	N 89°15'08" W	112.34'
L110	S 00°44'52" W	105.60'
L111	N 89°15'08" W	112.34'
L112	S 00°44'52" W	105.60'
L113	N 89°15'08" W	112.34'
L114	S 00°44'52" W	105.60'
L115	N 89°15'08" W	112.34'
L116	S 00°44'52" W	105.60'
L117	N 89°15'08" W	114.01'
L118	S 00°44'52" W	90.60'
L119	N 89°15'08" W	129.00'
L120	S 00°44'52" W	105.60'

PARCEL LINE TABLE		
LINE #	BEARING	DISTANCE
L121	S 00°44'52" W	105.60'
L122	S 89°32'47" E	17.45'
L123	S 00°27'13" W	10.00'
L124	S 89°32'47" E	17.40'
L125	N 20°59'25" W	24.13'
L126	N 89°15'08" W	50.00'
L130	S 00°44'52" W	1327.80'
L131	S 89°15'08" E	268.22'
L132	N 89°15'08" W	782.43'
L133	N 20°01'35" E	399.33'
L134	S 89°14'12" E	657.81'
L135	S 15°42'00" E	309.51'
L136	S 89°15'08" E	482.44'
L137	S 00°44'52" W	279.01'
L138	S 89°15'08" E	244.80'
L139	S 00°44'52" W	279.01'
L142	N 89°15'08" W	544.20'
L143	S 89°15'08" E	507.27'
L144	N 41°15'28" E	30.97'
L145	N 41°15'28" E	30.97'
L146	N 41°15'28" E	1.95'
L147	S 00°44'15" W	205.94'
L148	N 17°55'14" W	103.47'
L149	S 00°00'00" E	230.00'
L150	N 90°00'00" E	197.07'
L151	S 00°00'00" E	19.64'
L152	S 00°00'00" E	19.90'
L153	N 90°00'00" W	12.93'
L154	S 00°00'00" E	160.70'
L155	N 89°15'08" W	166.45'
L156	N 89°15'08" W	166.71'
L157	N 00°00'00" E	49.30'
L158	N 90°00'00" W	208.98'
L159	N 17°55'14" W	106.65'
L160	S 00°44'15" W	202.65'
L161	S 38°27'11" W	78.01'
L162	S 00°44'52" W	442.81'
L163	N 00°44'52" E	442.81'
L164	N 38°27'11" E	78.01'
L165	N 89°15'08" W	29.47'

PARCEL LINE TABLE		
LINE #	BEARING	DISTANCE
L166	S 00°44'52" W	32.47'
L167	S 00°44'52" W	32.47'
L168	S 89°15'08" E	29.53'
L169	S 45°44'52" W	7.17'
L170	N 89°15'08" W	29.53'
L171	N 00°44'52" E	32.47'
L172	N 00°44'52" E	32.47'
L173	S 89°15'08" E	29.47'
L174	S 44°08'14" E	7.15'

LOT	ADDRESS
101	
102	
103	
104	
105	
106	
107	
108	
109	
110	
111	
112	
113	
114	
115	
116	
117	
118	
119	
120	
121	
122	
123	
124	
125	
126	
127	
128	
129	
130	
131	
132	
133	
134	
135	
136	

LOT	ADDRESS
137	
138	
139	
140	
141	
142	
143	
144	
145	
146	
147	
148	
149	
150	
151	
152	
153	
154	



PAGE 2 OF 2

WEBER COUNTY RECORDER