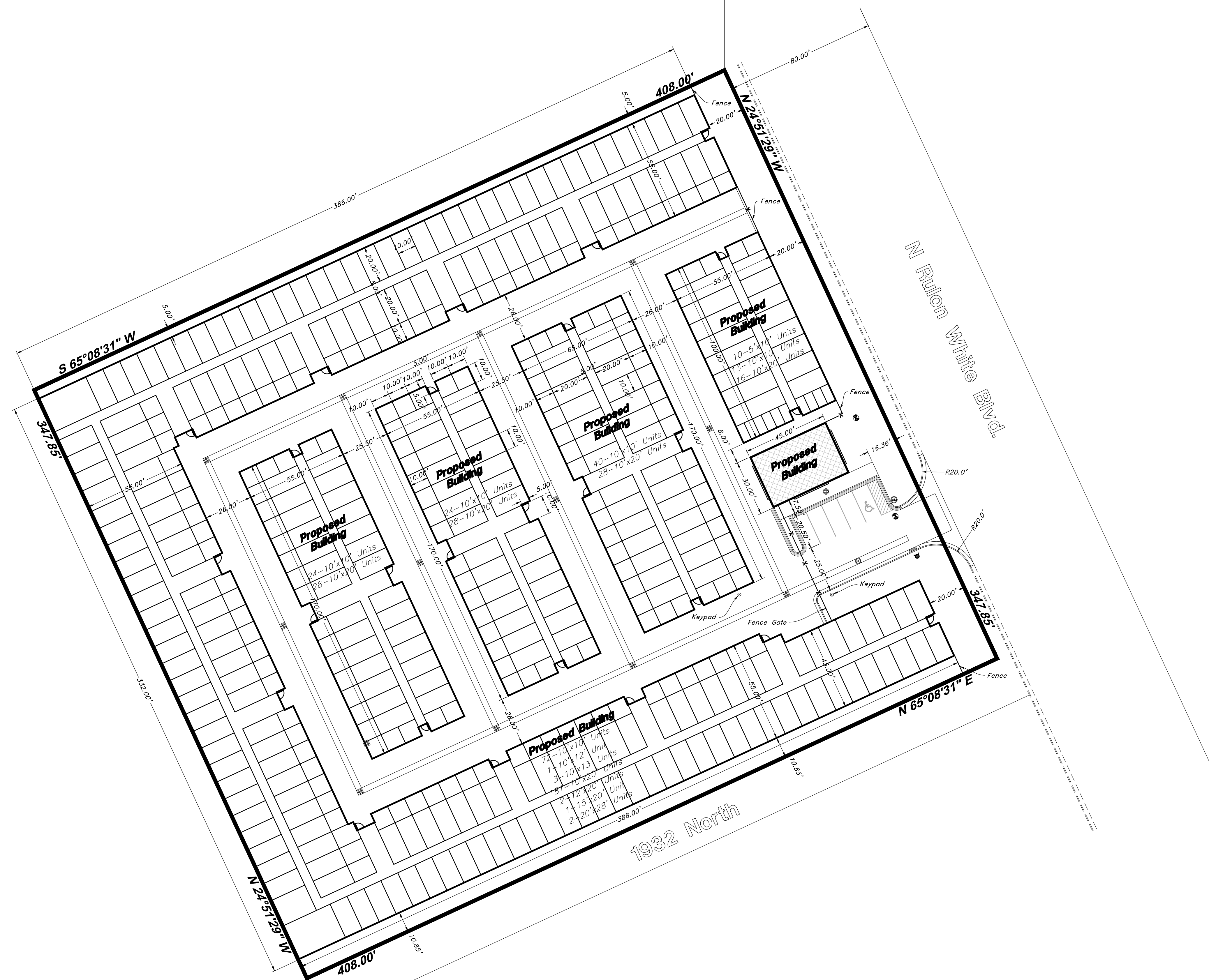


Legend

(Note: All items may not appear on drawing)

- Keypad
- San. Sewer Manhole
- Water Manhole
- Storm Drain Manhole
- Electrical Manhole
- Catch Basins
- Exist. Fire Hydrant
- Exist. Water Valve
- Water Valve
- Sanitary Sewer
- Culinary Water
- Gas Line
- Irrigation Line
- Storm Drain
- Telephone Line
- Secondary Waterline
- Power Line
- Fire Line
- Land Drain
- Power pole
- Power pole w/guy
- Light Pole
- Fence
- Flowline of ditch
- Overhead Power line
- Corrugated Metal Pipe
- Concrete Pipe
- Reinforced Concrete Pipe
- Ductile Iron
- Polyvinyl Chloride
- Top of Asphalt
- Edge of Asphalt
- Centerline
- Flowline
- Finish Floor
- Top of Curb
- Top of Wall
- Top of Walk
- Top of Concrete
- Natural Ground
- Finish Grade
- Fire Department Connection
- Finish Contour
- Exist. Contour
- Finish Grade
- Exist. Grade
- Ridge Line
- Direction of Flow
- Unused Space
- Existing Asphalt
- New Asphalt
- Heavy Duty Asphalt
- Concrete
- Spill
- Curb & Gutter
- Demo Tree



TOTAL
 10-5'x10' Units
 173-10'x10' Units
 1-10'x12' Unit
 3-10'x13' Units
 281-10'x20' Units
 2-12'x20' Units
 1-15'x20' Unit
 2-20'x28' Units

NO.	DESCRIPTION	DATE	REV.

GREAT BASIN ENGINEERING

5746 SOUTH 1475 EAST OGDEN, UTAH 84403
 MAIN (801)394-4515 S.L.L.C. (801)521-0222 FAX (801)392-7544
 WWW.GREATBASINENGINEERING.COM

Site Plan
Weber Storage Sheds
 1957 N. Rulon White Blvd.
 Ogdan City, Weber County, Utah
 A part of Section ??, T3N, R2W, SLB&M, U.S. Survey

Apr 1, 2021

SHEET NO.

C1

21N713