

PLANTING NOTES

1. EXAMINE THE SITE CONDITIONS, THE SUBGRADE AND VERIFY THE DEPTHS OF TOPSOIL AND MULCH. NOTIFY THE ARCHITECT IN WRITING OF ANY UNSATISFACTORY CONDITIONS. DO NOT BEGIN LANDSCAPE WORK UNTIL UNSATISFACTORY CONDITIONS HAVE BEEN RESOLVED.
2. VERIFY LOCATIONS OF ALL UTILITIES PRIOR TO ANY DIGGING. ANY DAMAGE TO EXISTING UTILITIES CAUSED BY THIS CONTRACTOR SHALL BE REPAIRED AT NO ADDITIONAL EXPENSE TO THE OWNER.
3. TOPSOIL IS TO BE IMPORTED TO THE SITE. SCREEN AND AMEND AS NECESSARY TO MEET "ACCEPTABLE" STANDARDS FOR TOPSOIL AS DESCRIBED IN "TOPSOIL QUALITY GUIDELINES FOR LANDSCAPING" (KOEING, ISAMAN, UTAH STATE UNIVERSITY) <http://extension.usu.edu/files/publications/publication/AG-50-02.pdf> CONTRACTOR IS RESPONSIBLE FOR PROVIDING 12" OF TOPSOIL AROUND SHRUBS AND TREES PER DETAIL.
4. THE LANDSCAPE CONTRACTOR IS RESPONSIBLE FOR FINISH GRADE ELEVATIONS. ALLOW FOR A MINIMUM OF 6" THICK MULCH LAYER. COORDINATE ROUGH GRADING WITH THE GENERAL CONTRACTOR.
5. ALL PLANT MATERIAL MUST MEET THE SIZES AS INDICATED ON THE PLANT SCHEDULE. PLANT MATERIAL THAT DOES NOT MEET THE QUALITY STANDARDS OF THE PROJECT WILL BE REFUSED BY THE LANDSCAPE ARCHITECT.
6. TURFGRASS SOD SHALL BE CERTIFIED NUMBER 1 QUALITY/PREMIUM SOD - SEE SPECIFICATIONS

PLANT SCHEDULE

TREES	QTY	BOTANICAL / COMMON NAME	CONT	CAL	SIZE
CAR FRA	1	<i>Carpinus betulus</i> 'Franz Fontaine' / Franz Fontaine Hornbeam	B&B	2"Cal	
GYM DIO	2	<i>Gymnocladus dioica</i> 'Espresso' / Kentucky Coffeetree	B&B	2"Cal	
PIN ORE	8	<i>Pinus nigra</i> 'Oregon Green' / Oregon Green Pine	B&B		6-7' HT
ZEL MUS	5	<i>Zelkova serrata</i> 'Musashino' / Sawleaf Zelkova	B&B	2"Cal	

SHRUBS	QTY	BOTANICAL / COMMON NAME	SIZE
PIN SLO	23	<i>Pinus mugo</i> 'Slowmound' / Mugo Pine	5 gal
PRU OTT	45	<i>Prunus laurocerasus</i> 'Otto Luyken' / Luykens Laurel	5 gal
RHU GRO	43	<i>Rhus aromatica</i> 'Gro-Low' / Gro-Low Fragrant Sumac	5 gal
RIB RED	16	<i>Ribes rubrum</i> 'Red Lake' / Red Lake Currant	5 gal
ROS KNO	9	<i>Rosa</i> x 'Knockout' TM / Rose	5 gal

GRASSES	QTY	BOTANICAL / COMMON NAME	SIZE
CAL KAR	25	<i>Calamagrostis</i> x <i>acutiflora</i> 'Karl Foerster' / Feather Reed Grass	1 gal
DES CAE	8	<i>Deschampsia cespitosa</i> 'Northern Lights' / Northern Lights Hair Grass	1 gal

GROUND COVERS	QTY	BOTANICAL / COMMON NAME	CONT	TYPE
	15,157 sf	Decorative Gravel Mulch / 1.5"-2" Washed Crushed/Angular Gravel Place 3" Deep Over Dewitt Pro5 Weed Barrier Fabric	Stone Mulch	

LANDSCAPE IRRIGATION AREA CALCULATIONS

DRIP IRRIGATION AT EACH TREE (38 SF EACH)
 14 TREES x 38 SF = 532 SF

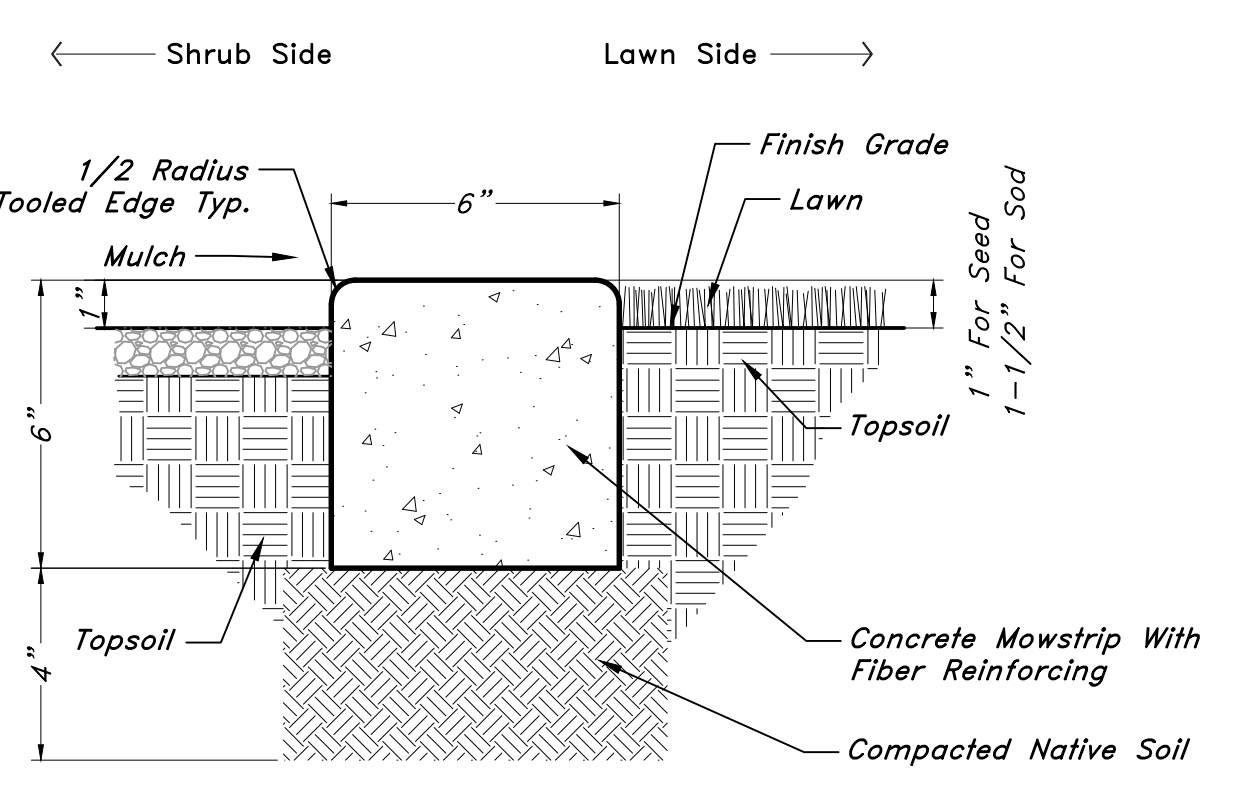
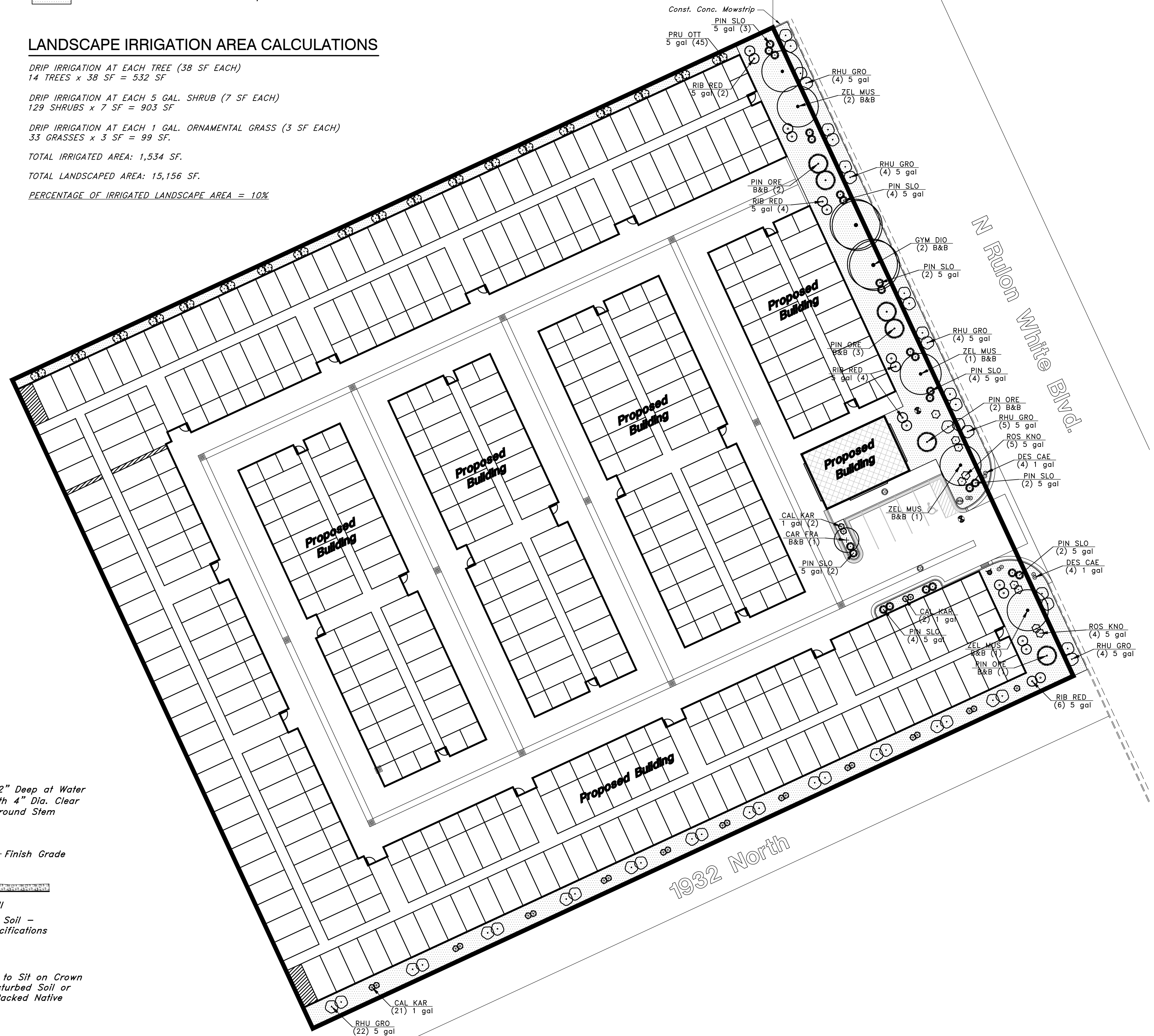
DRIP IRRIGATION AT EACH 5 GAL. SHRUB (7 SF EACH)
 129 SHRUBS x 7 SF = 903 SF

DRIP IRRIGATION AT EACH 1 GAL. ORNAMENTAL GRASS (3 SF EACH)
 33 GRASSES x 3 SF = 99 SF

TOTAL IRRIGATED AREA: 1,534 SF.

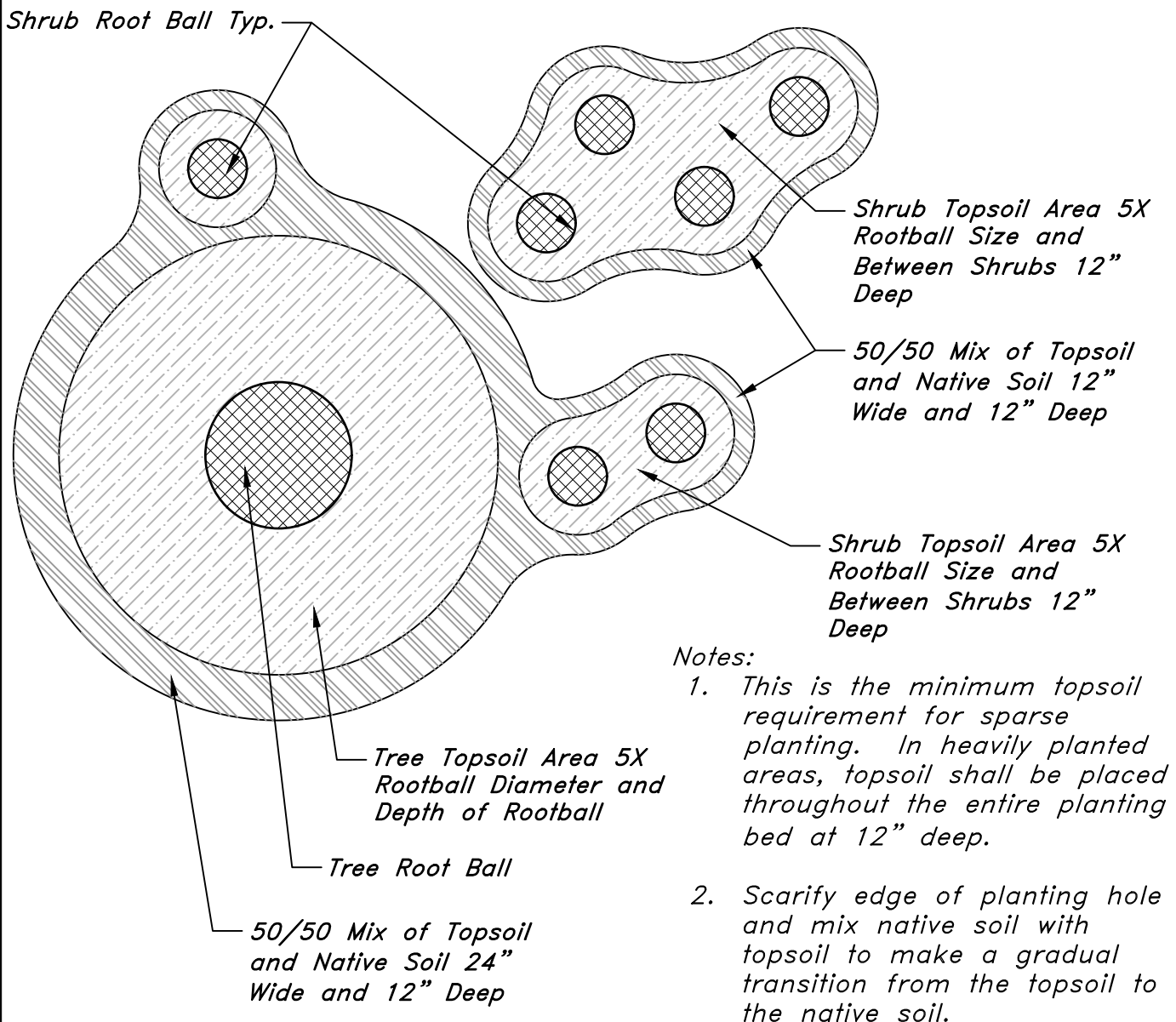
TOTAL LANDSCAPED AREA: 15,156 SF.

PERCENTAGE OF IRRIGATED LANDSCAPE AREA = 10%



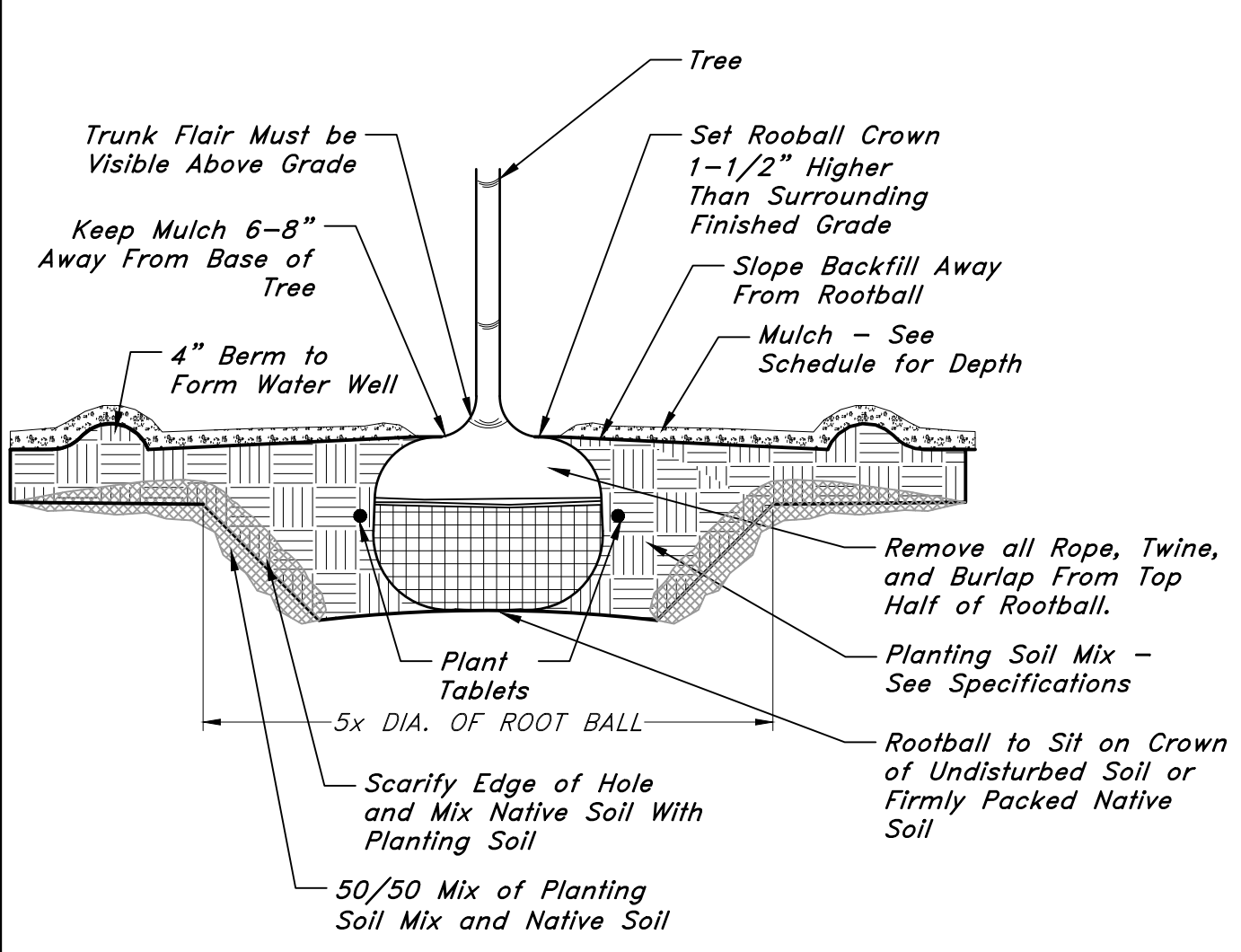
4 6" MOWSTRIP

3" = 1'-0" 329413.19-07



3 TOPSOIL PLACEMENT AT SHRUBS AND TREES

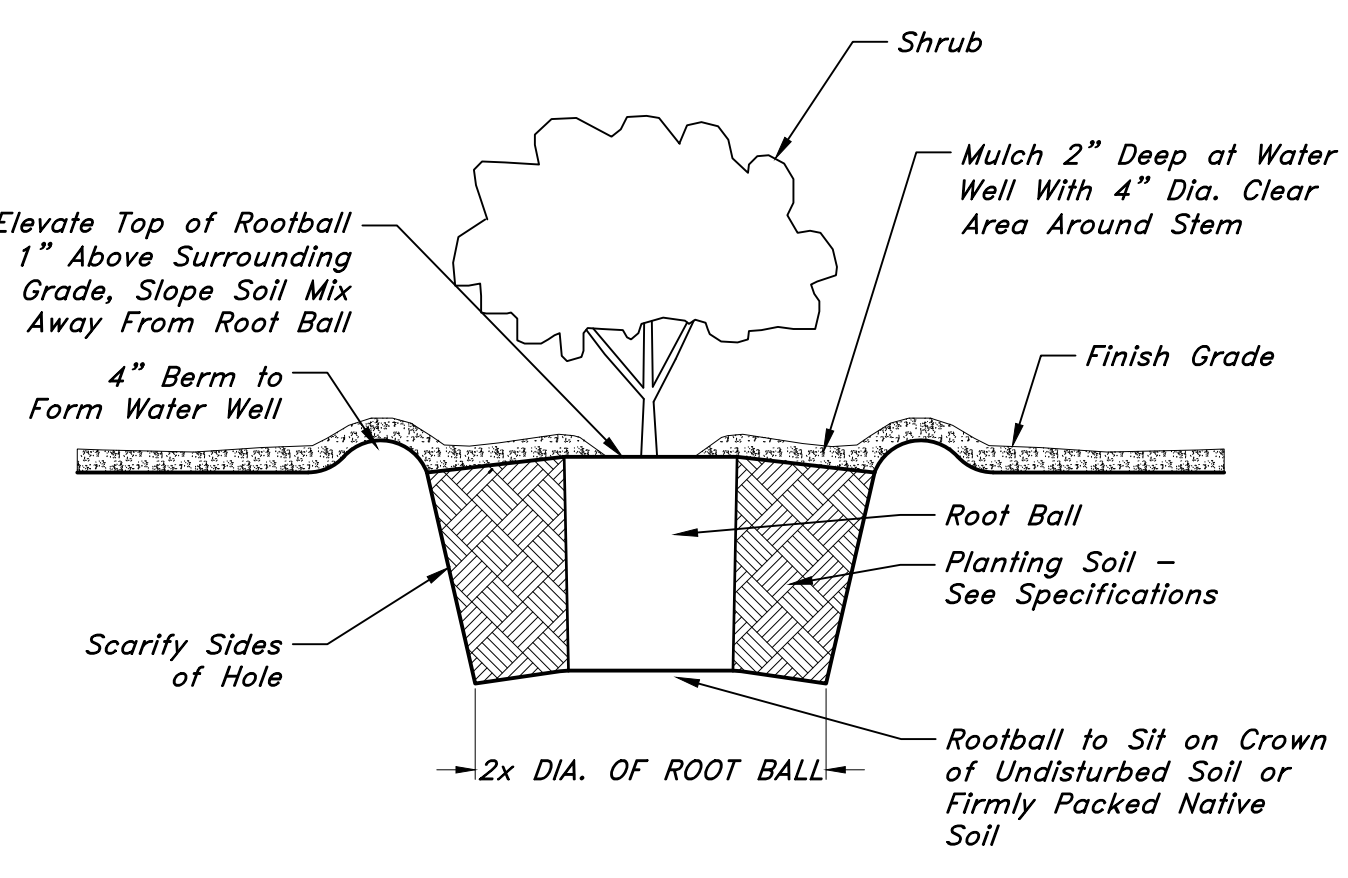
NTS 32 9406-01



Notes:
 1. If Wire Basket is Present, Cut and Fold Down Top Half of Wire Basket.

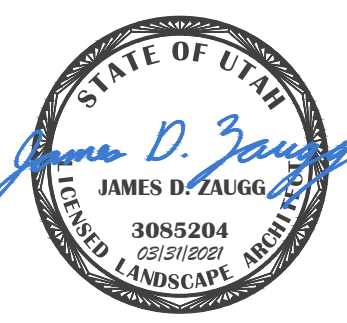
2 TREE PLANTING

NTS 32 9343.01-01



1 SHRUB PLANTING

NTS 32 9333.01-01



GREAT BASIN ENGINEERING
 5746 SOUTH 1475 EAST OGDEN, UTAH 84403
 MAIN (801)394-4515 S.L.L.C. (801)521-0222 FAX (801)392-7544
 WWW.GREATBASINENGINEERING.CO.U

Landscape Plan
Weber Storage Sheds
 1957 N. Rulon White Blvd.
 Ogden City, Weber County, Utah
 A part of Section ??, T7N, R7W, SLB&M, U.S. Survey

Mar. 31, 2021

SHEET NO.

L1
 21N713