

### PROPERTY DESCRIPTION

Date Time: 01-APR-2021 08:56 AM

Serial No.    As of  Change Year and Code   Acres

\* The following description \* SQ FT

\* for taxation purposes only\*

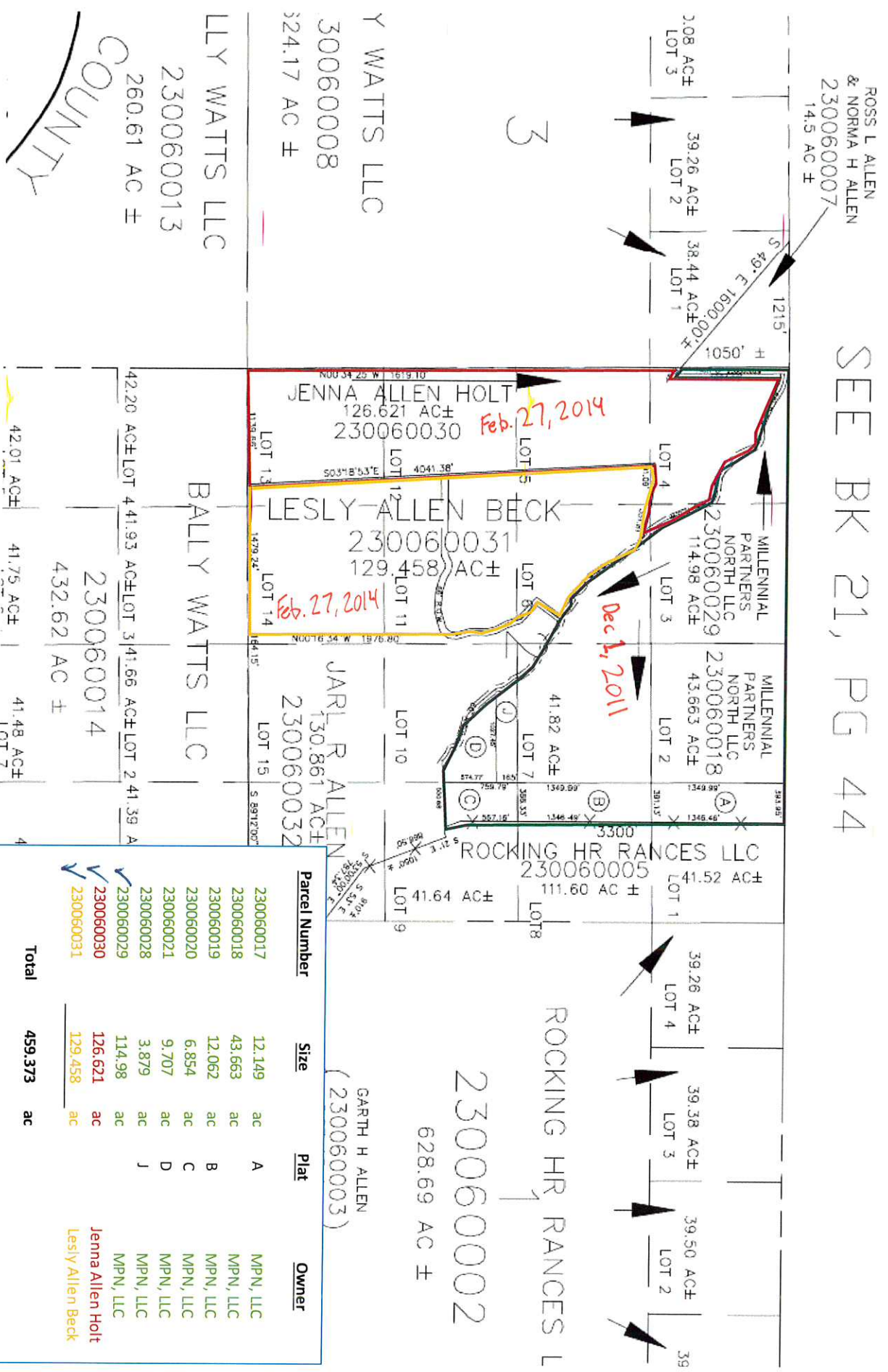
Nbr.	Description
▲ 11	THE FOLLOWING IS THE CENTERLINE OF AN EXISTING ROAD TRAVERSING
12	SECTION 2, TOWNSHIP 5 NORTH, RANGE 2 EAST, SALT LAKE BASE AND
13	MERIDIAN US SURVEY: BEGINNING AT A POINT ON THE SOUTHERLY
14	RIGHT OF WAY LINE OF A ROAD WHICH LIES NORTH 89D41'56" EAST
15	1694.42 FEET ALONG THE NORTH LINE OF SECTION 2, AND SOUTH
16	00D18'04" EAST 1510.91 FEET FROM THE NORTHWEST ACORNER OF SAID
17	SECTION 2, THENCE ALONG SAID RIGHT OF WAY THE FOLLOWING TWENTY
18	(20) COURSES: (1) SOUTH 65D07'31" EAST 59.32 FEET; (2) THENCE
19	SOUTH 59D00'41" EAST 11.62 FEET; (3) THENCE SIYTH 45D28'42"
20	EAST 19.90 FEET; (4) THENCE SOUTH 23D15'32" EAST 75.55 FEET;
21	(5) THENCE SOUTH 33D36'21" EAST 37.37 FEET (6) THENCE SOUTH
22	41D02'47" EAST 144.51 FEET; (7) THENCE SOUTH 32D19'05" EAST
23	37.00 FEET; (8) THENCE SOUTH 21D00'32" EAST 62.42 FEET; (9)
24	THENCE SOUTH 28D24'50" EAST 37.57 FEET; (10) THENCE SOUTH
25	38D20'33" EAST 73.03 FEET; (11) THENCE SOUTH 33D06'04" EAST
26	127.13 FEET; (12) THENCE SOUTH 44D58'21" EAST 39.26 FEET; (13)
27	THENCE SOUTH 70D30'31" EAST 59.13 FEET; (14) THENCE SOUTH
▼ 28	53D42'06" EAST 36.02 FEET; (15) THENCE SOUTH 37D07'06" EAST



5N, 2 E, Sec. 2

Sheep Herd Ranch

SEE BK 21, PG 44



Parcel Number	Size	Plat	Owner
230060017	12.149 ac	A	MPN, LLC
230060018	43.663 ac		MPN, LLC
230060019	12.062 ac	B	MPN, LLC
230060020	6.854 ac	C	MPN, LLC
230060021	9.707 ac	D	MPN, LLC
230060028	3.879 ac	J	MPN, LLC
230060029	114.98 ac		MPN, LLC
230060030	126.621 ac		Jenna Allen Holt
230060031	129.458 ac		Lesly Allen Beck
<b>Total</b>	<b>459.373</b>		
MPN, LLC	203.294 ac		

# T.5N., R.2E., S.L.B. & M.

WEBER COUNTY

SCALE 1" = 2000'

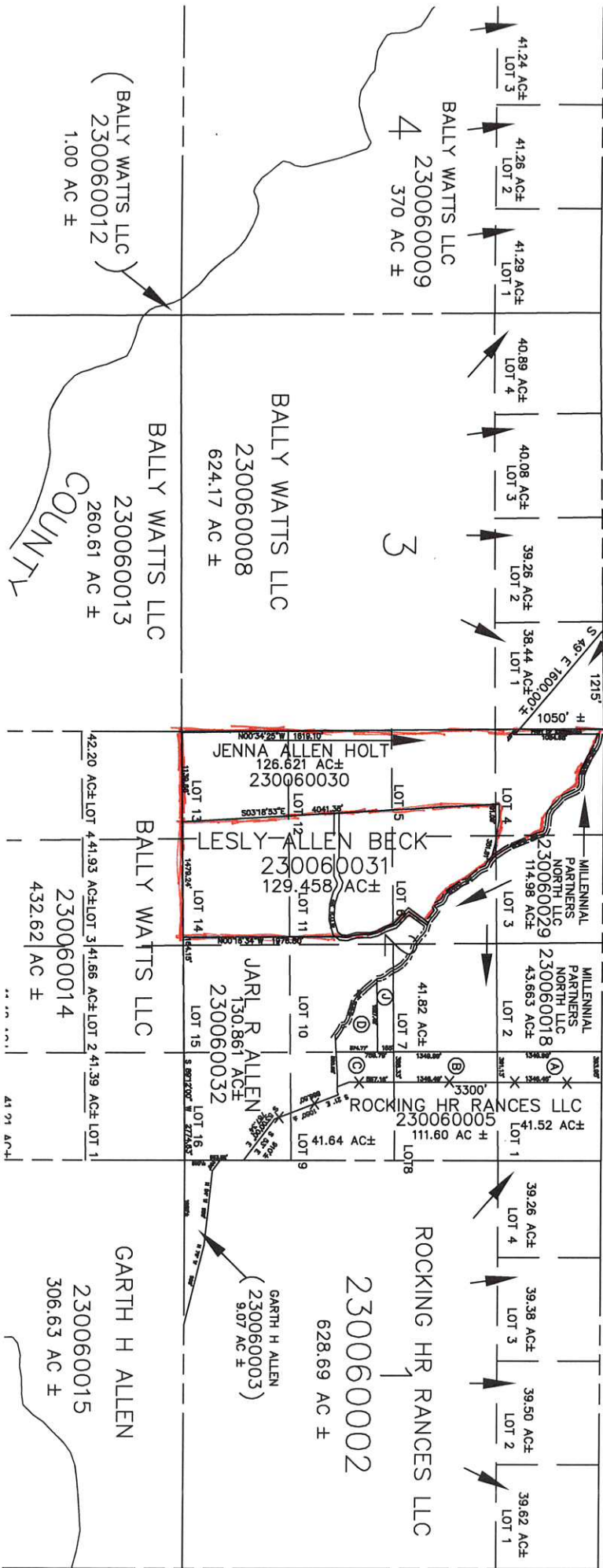
SEE BK 21, PG 43

BK 21, PG 42

SEE BK 21, PG 44

2014

(A)	MILLENNIAL PARTNERS NORTH LLC 230060017 121.49 AC±	(B)	MILLENNIAL PARTNERS NORTH LLC 230060019 120.82 AC±	(C)	MILLENNIAL PARTNERS NORTH LLC 230060020 81.85 AC±	(D)	MILLENNIAL PARTNERS NORTH LLC 230060021 9.707 AC±	(E)	JARL R ALLEN ETAL 230060023 29.015 SQ FT	(J)	MILLENNIAL PARTNERS NORTH LLC 230060028 3.879 AC±
-----	--	-----	--	-----	---	-----	---	-----	--	-----	---



SEE PAGE 121

T.5N., R.2E., S.L.B. & M.  
 WEBER COUNTY

SCALE 1" = 2000'

BK 21, PG 42

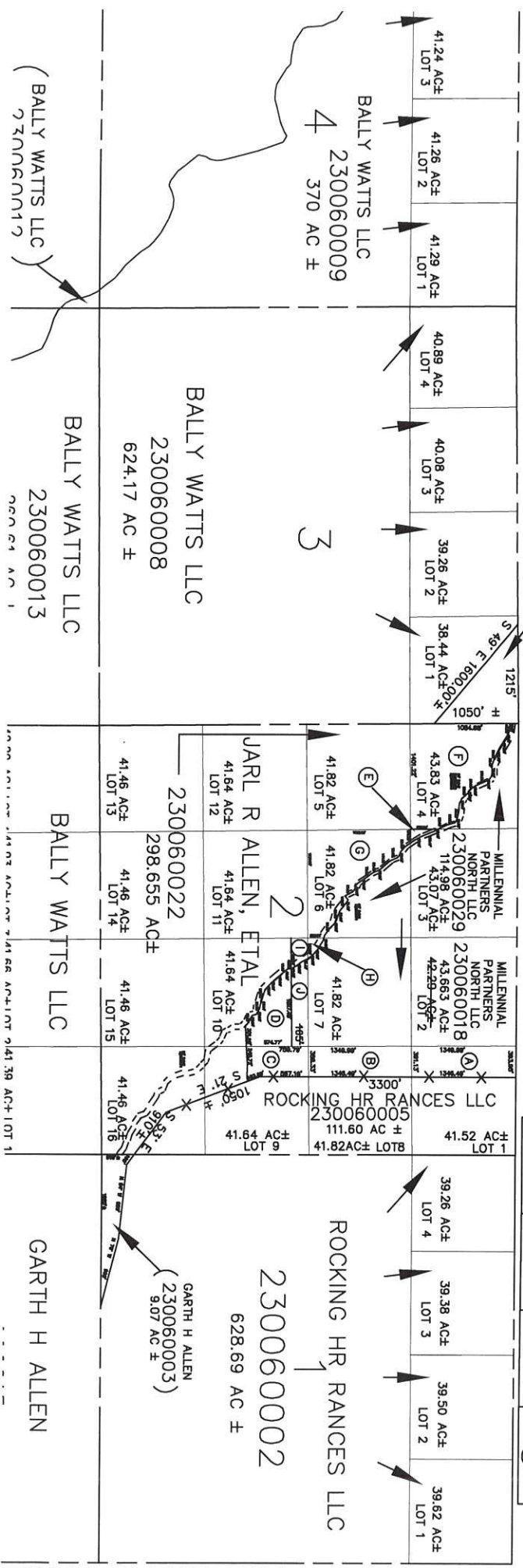
SEE BK 21, PG 43

SEE BK 21, PG 44

20013

(A)	MILLENNIAL PARTNERS NORTH LLC 230060017 12.149 AC±	(B)	MILLENNIAL PARTNERS NORTH LLC 230060019 12.062 AC±	(C)	MILLENNIAL PARTNERS NORTH LLC 230060020 6.854 AC±	(D)	MILLENNIAL PARTNERS NORTH LLC 230060021 9.707 AC±	(E)	JARL R ALLEN ETAL 230060023 29.015 SQ FT	(F)	JARL R ALLEN ETAL 230060024 29.074 AC±
-----	--	-----	--	-----	---	-----	---	-----	--	-----	--

(G)	JARL R ALLEN ETAL 230060025 24.983 AC±	(H)	JARL R ALLEN ETAL 230060026 36,678 SQ FT	(I)	JARL R ALLEN ETAL 230060027 1.331 AC ±	(J)	MILLENNIAL PARTNERS NORTH LLC 230060028 3.879 AC±
-----	--	-----	--	-----	--	-----	---



T.5N., R.2E., S.L.B. & M.  
 IN WEBER COUNTY

SCALE 1" = 2000'  
 SEE BK 21, PG 43

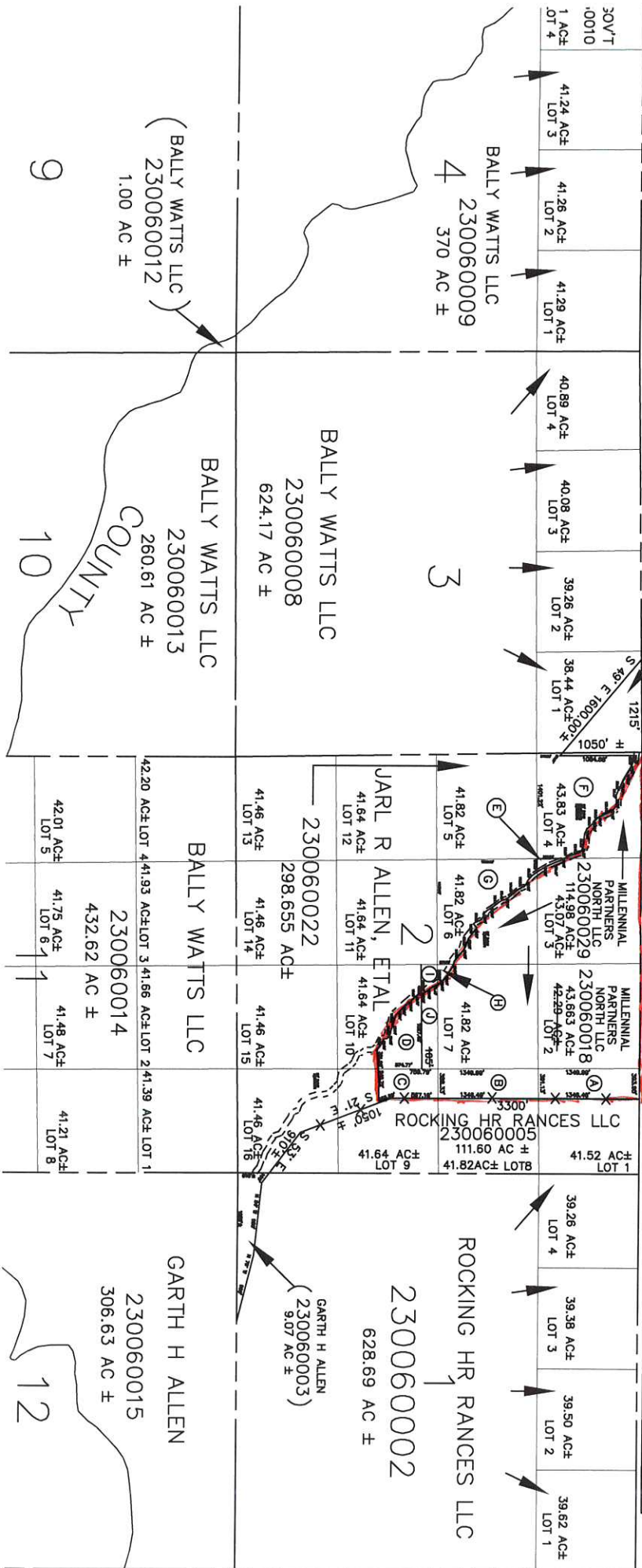
SEE BK 21, PG 42

SEE BK 21, PG 44

2011

(A)	MILLENNIAL PARTNERS NORTH LLC 230060017 12.149 AC±	(B)	MILLENNIAL PARTNERS NORTH LLC 230060019 12.062 AC±	(C)	MILLENNIAL PARTNERS NORTH LLC 230060020 6.854 AC±	(D)	MILLENNIAL PARTNERS NORTH LLC 230060021 9.707 AC±	(E)	JARL R ALLEN ETAL 230060023 29.015 SQ FT	(F)	JARL R ALLEN ETAL 230060024 29.074 AC±
-----	--	-----	--	-----	---	-----	---	-----	--	-----	--

(G)	JARL R ALLEN ETAL TRUSTEES 230060007 14.5 AC ±	(H)	JARL R ALLEN ETAL 230060026 36.878 SQ FT	(I)	JARL R ALLEN ETAL 230060027 1.331 AC ±	(J)	MILLENNIAL PARTNERS NORTH LLC 230060028 3.879 AC±
-----	--	-----	--	-----	--	-----	---

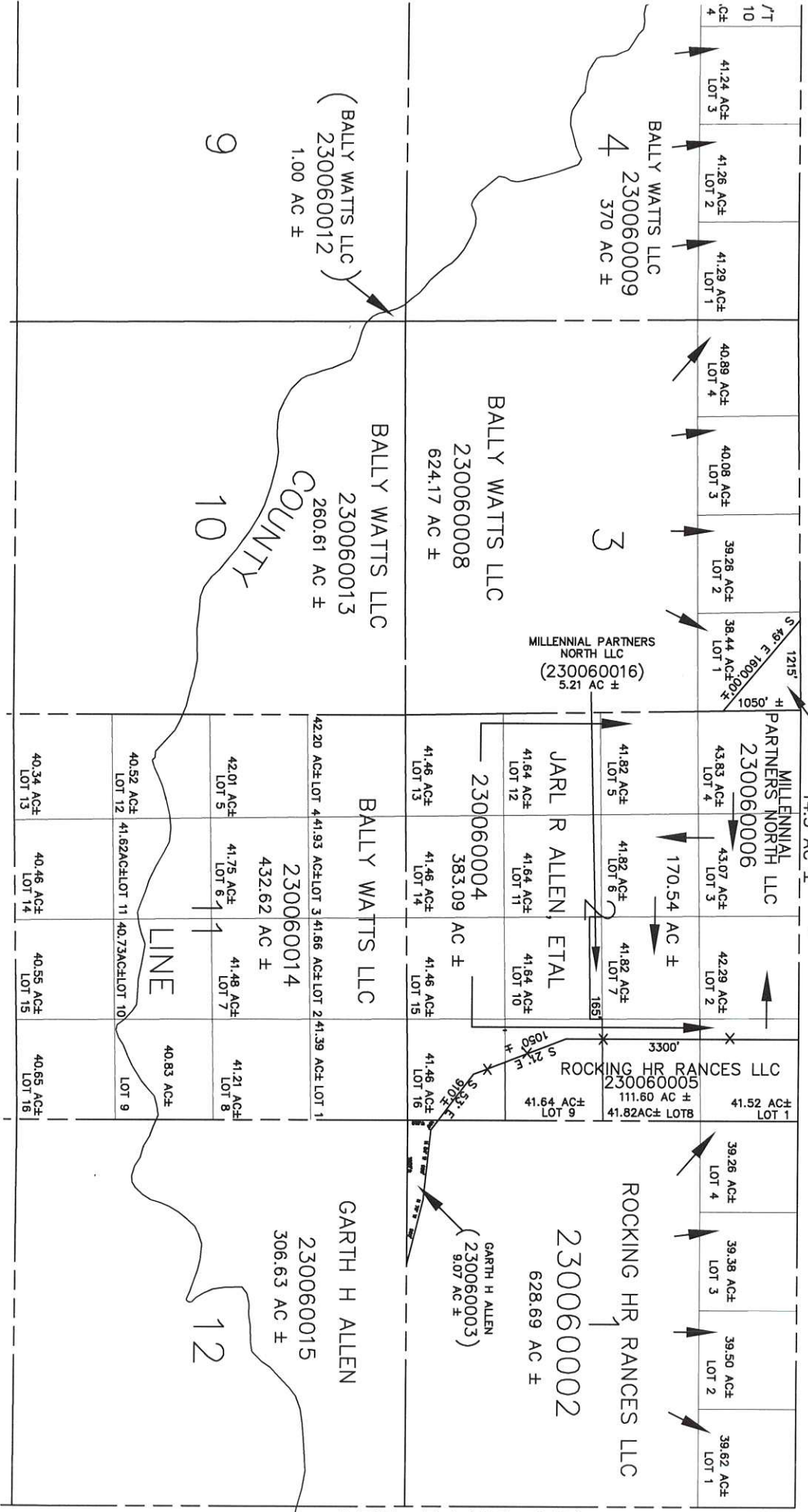


SEE PAGE 121

T.5N., R.2E., S.L.B. & M.  
IN WEBER COUNTY SCALE 1" = 2000'

2010

SEE BK 21, PG 42 SEE BK 21, PG 43 (ETAL, TRUSTEES)  
ROSS L ALLEN SEE BK 21, PG 44  
230060007 14.5 AC ±



SEE PAGE 121