

PROPERTY DESCRIPTION

Date/Time: 01-APR-2021 09:02 AM

Serial No. As of Change Year and Code Acres

* The following description * SQ FT

* for taxation purposes only*

Nbr. Description

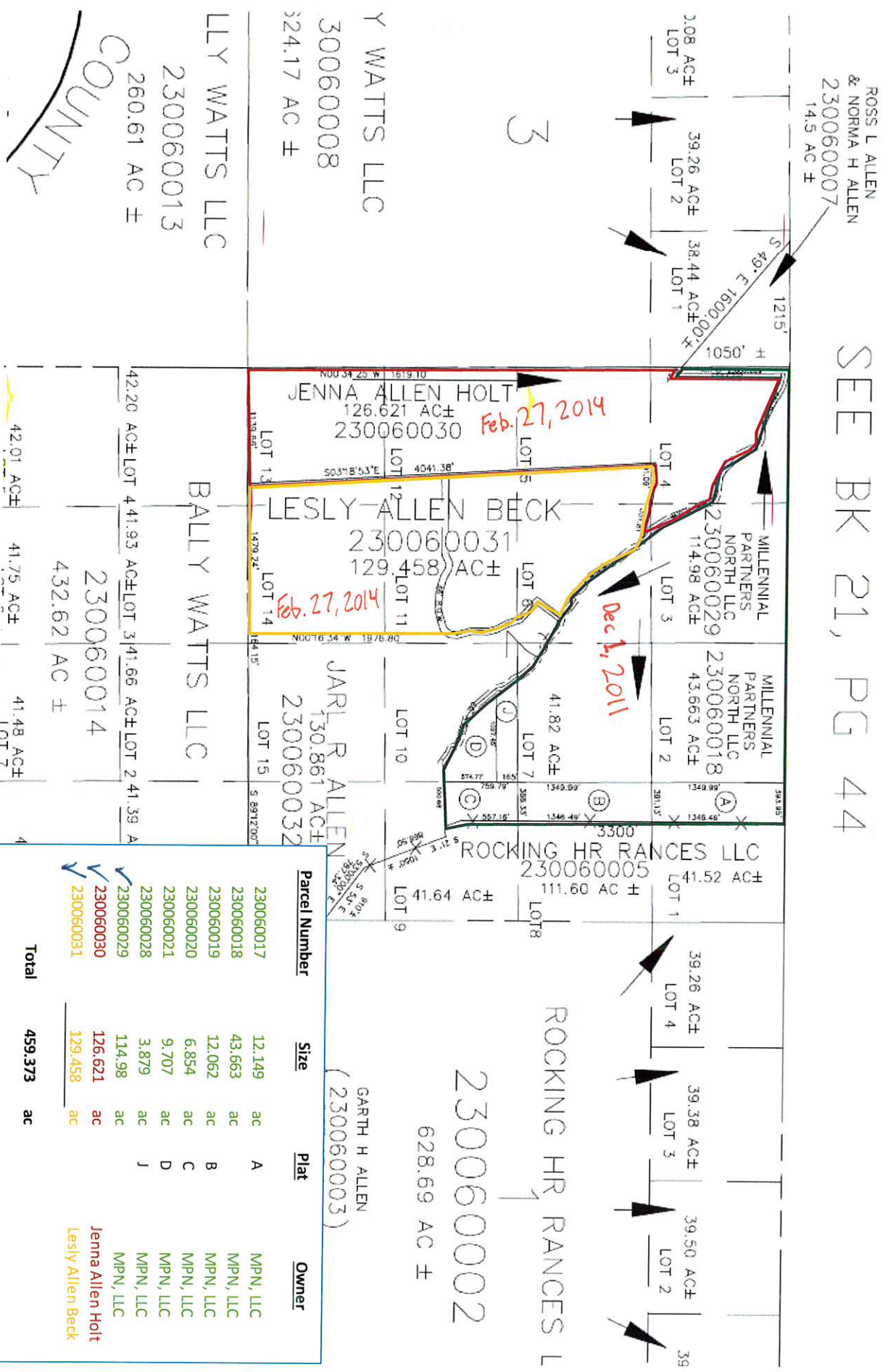
▲ 11	THE FOLLOWING IS THE CENTERLINE OF AN EXISTING ROAD TRAVERSING
12	SECTION 2, TOWNSHIP 5 NORTH, RANGE 2 EAST, SALT LAKE BASE AND
13	MERIDIAN, US SURVEY: BEGINNING AT A POINT ON THE SOUTHERLY
14	RIGHT OF WAY LINE OF A ROAD WHICH LIES NORTH 89D41'56" EAST
15	1694.42 FEET ALONG THE NORTH LINE OF SECTION 2, AND SOUTH
16	00D18'04" EAST 1510.91 FEET FROM THE NORTHWEST CORNER OF SAID
17	SECTION 2, THENCE NORTH 75D36'08" WEST 247.42 FEET; THENCE
18	NORTH 80D18'12" WEST 315.81 FEET; THENCE SOUTH 88D38'32" WEST
19	191.09; THENCE SOUTH 03D18'53" EAST 4041.38 FEET TO THE SOUTH
20	LINE OF SECTION 2; THENCE ALONG SAID SOUTH LINE SOUTH
21	89D14'41" WEST 1139.66 FEET TO THE SOUTHWEST CORNER OF SECTION
22	2; THENCE ALONG THE WEST LINE OF SECTION 2, NORTH 00D34'25"
23	WEST 2684.94 FEET TO THE WEST QUARTER CORNER OF SECTION 2;
24	THENCE CONTINUING ALONG SAID WEST LINE NORTH 00D34'25" 1619.10
25	FEET; THENCE SOUTH 49D24'43" EAST 87.67 FEET; THENCE NORTH
26	00D34'25" WEST 1084.68 FEET TO THE SOUTHERLY RIGHT OF WAY LINE
27	OF A ROADWAY; THENCE ALONG SAID RIGHT OF WAY THE FOLLOWING
▼ 28	THIRTY-SIX (36) COURSES: (1) SOUTH 81D46'43" EAST 80.15 FEET;



5N, 2 E, Sec. 2

Sheep Herd Ranch

SEE BK 21, PG 44



Parcel Number	Size	Plat	Owner
230060017	12.149 ac	A	MPN, LLC
230060018	43.663 ac		MPN, LLC
230060019	12.062 ac	B	MPN, LLC
230060020	6.854 ac	C	MPN, LLC
230060021	9.707 ac	D	MPN, LLC
230060028	3.879 ac	J	MPN, LLC
230060029	114.98 ac		MPN, LLC
230060030	126.621 ac		Jenna Allen Holt
230060031	129.458 ac		Lesly Allen Beck
Total	459.373 ac		
MPN, LLC	203.294 ac		

230060002
628.69 AC ±

GARTH H ALLEN
(230060003)

ROCKING HR RANCES L

T.5N., R.2E., S.L.B. & M.

WEBER COUNTY

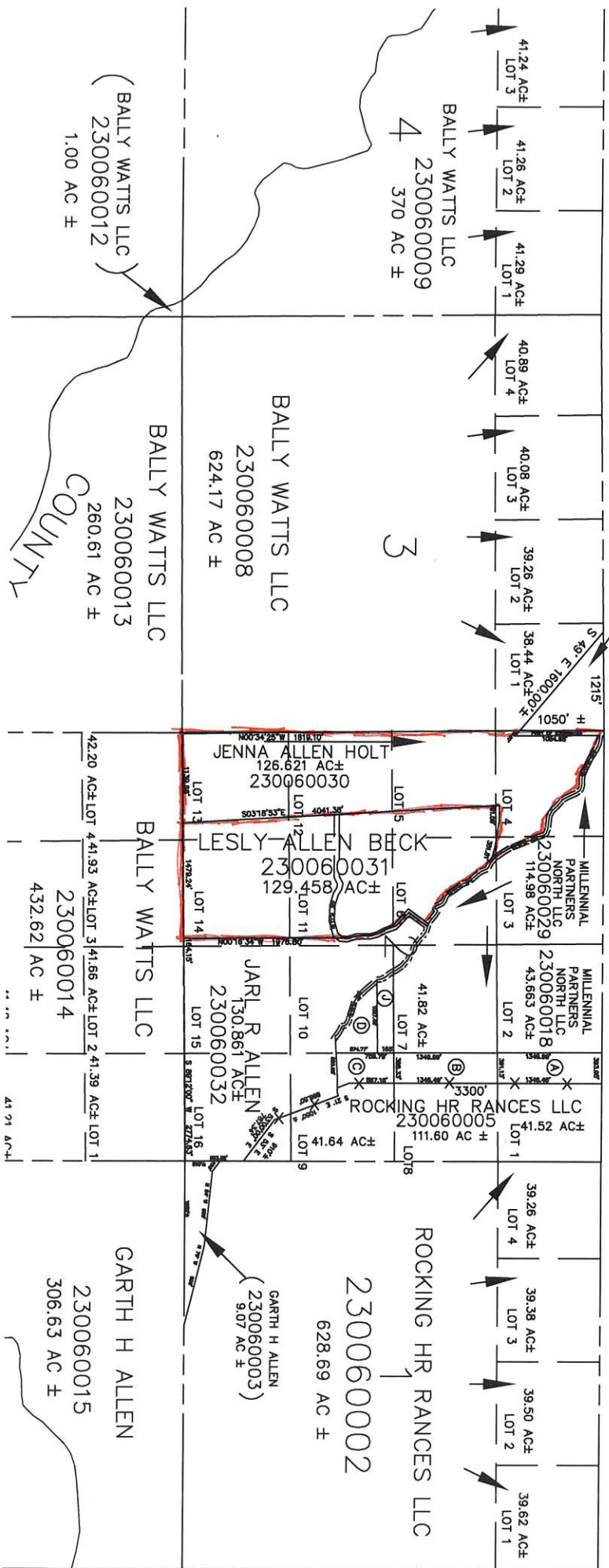
SEE BK 21, PG 43

BK 21, PG 42

SEE BK 21, PG 44

2014

(A)	MILLENNIAL PARTNERS NORTH LLC 230060017 12,149 AC±	(B)	MILLENNIAL PARTNERS NORTH LLC 230060019 12,062 AC±	(C)	MILLENNIAL PARTNERS NORTH LLC 230060020 8,894 AC±	(D)	MILLENNIAL PARTNERS NORTH LLC 230060021 9,707 AC±	(E)	JARL R ALLEN ETAL 230060023 29,015 SQ FT	(J)	MILLENNIAL PARTNERS NORTH LLC 230060028 3,879 AC±
-----	--	-----	--	-----	---	-----	---	-----	--	-----	---



SEE PAGE 121

T.5N., R.2E., S.L.B. & M.

WEBER COUNTY SCALE 1" = 2000'

SEE BK 21, PG 43

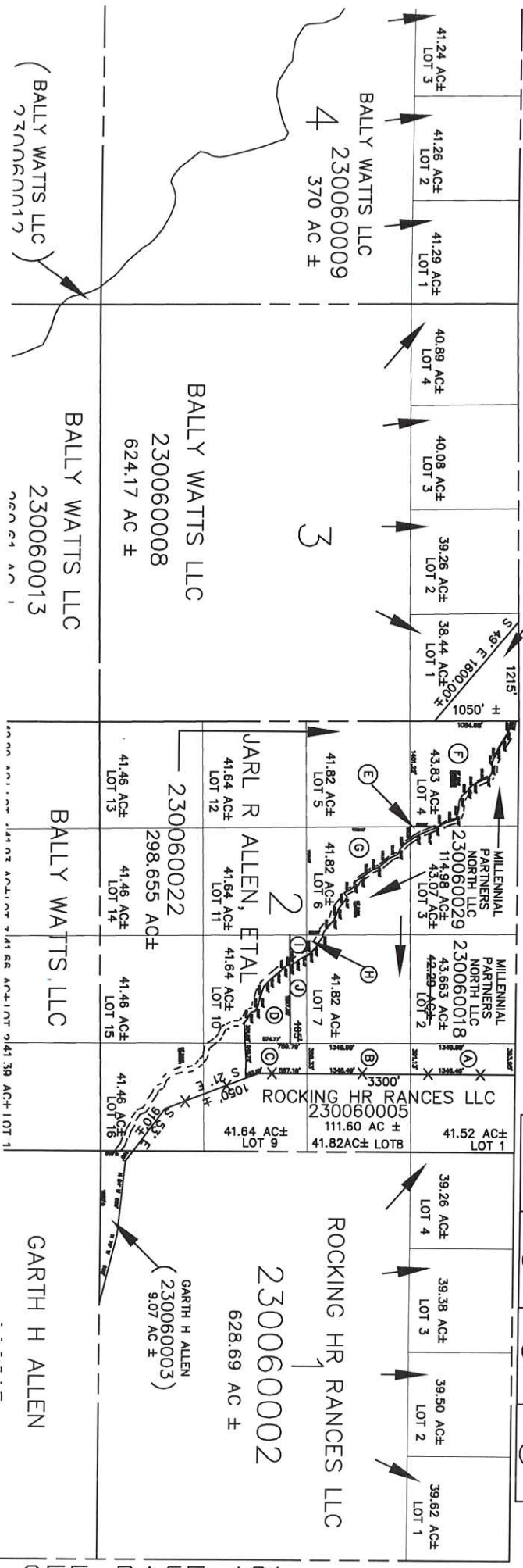
BK 21, PG 42

SEE BK 21, PG 44

2013

MILLENNIAL PARTNERS NORTH LLC 230060017 12.149 AC±	MILLENNIAL PARTNERS NORTH LLC 230060019 12.062 AC±	MILLENNIAL PARTNERS NORTH LLC 230060020 6.854 AC±	MILLENNIAL PARTNERS NORTH LLC 230060021 9.707 AC±	JARL R ALLEN ETAL 230060023 29.015 SQ FT	JARL R ALLEN ETAL 230060024 29.074 AC±
(A)	(B)	(C)	(D)	(E)	(F)

JARL R ALLEN ETAL 230060025 24.983 AC±	JARL R ALLEN ETAL 230060026 36,678 SQ FT	JARL R ALLEN ETAL 230060027 1,331 AC ±	MILLENNIAL PARTNERS NORTH LLC 230060028 3.879 AC±
(G)	(H)	(I)	(J)



SEE PAGE 121

T.5N., R.2E., S.L.B. & M.

IN WEBER COUNTY

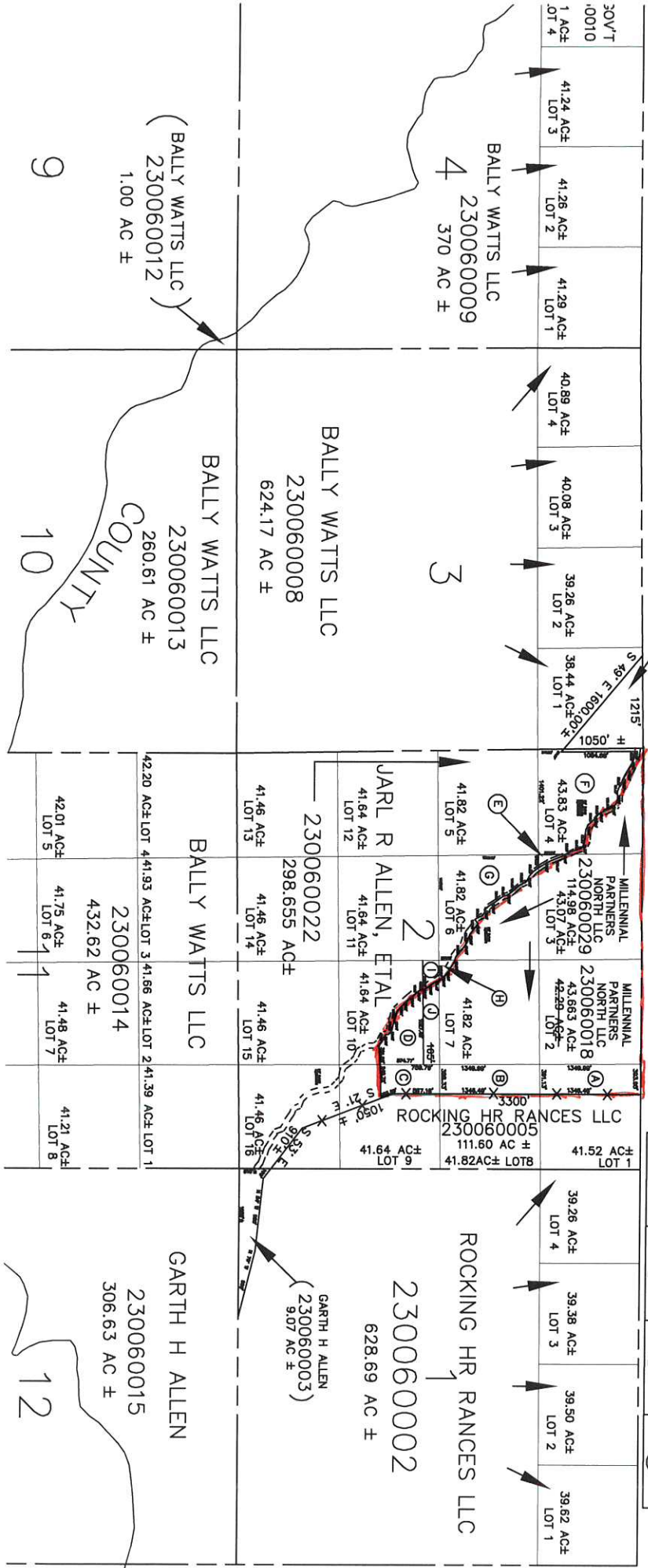
SCALE 1" = 2000'

SEE BK 21, PG 43

SEE BK 21, PG 42

SEE BK 21, PG 44

2011



(A)	MILLENNIAL PARTNERS NORTH LLC 230060017 12.149 AC±	(B)	MILLENNIAL PARTNERS NORTH LLC 230060019 12.062 AC±	(C)	MILLENNIAL PARTNERS NORTH LLC 230060020 8.854 AC±	(D)	MILLENNIAL PARTNERS NORTH LLC 230060021 9.707 AC±	(E)	JARL R ALLEN ETAL 230060023 29.015 SQ FT	(F)	JARL R ALLEN ETAL 230060024 29.074 AC±
(G)	JARL R ALLEN ETAL 230060025 24.983 AC±	(H)	JARL R ALLEN ETAL 230060026 38.878 SQ FT	(I)	JARL R ALLEN ETAL 230060027 1.331 AC±	(J)	MILLENNIAL PARTNERS NORTH LLC 230060028 3.879 AC±				

T.5N., R.2E., S.L.B. & M.
IN WEBER COUNTY SCALE 1" = 2000'

2010

SEE BK 21, PG 42 SEE BK 21, PG 43 (ETAL, TRUSTEES)
ROSS L ALLEN SEE BK 21, PG 44
230060007 14.5 AC ±

