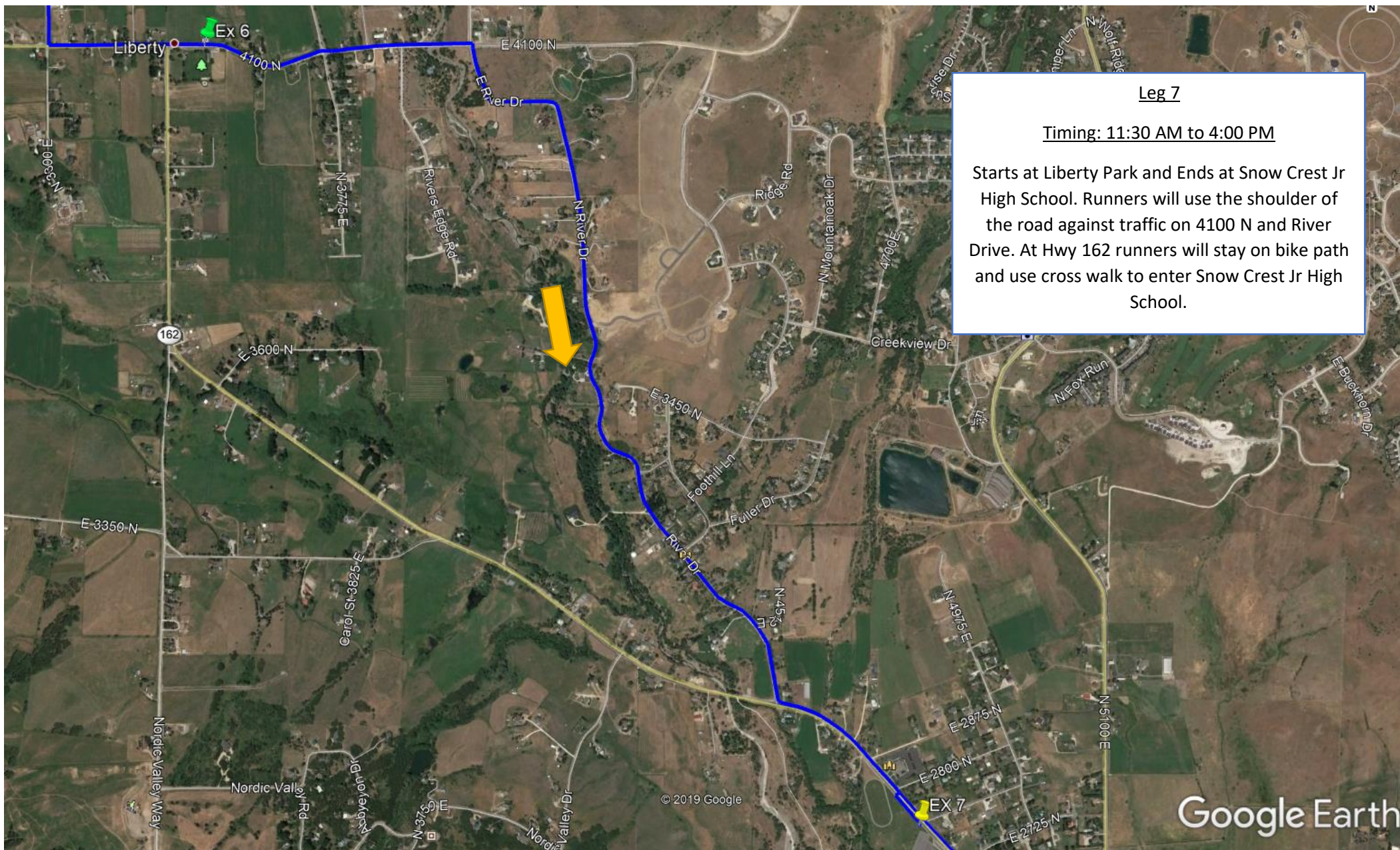


RAGNAR SPRINT WB 2021 COURSE MAPS – WEBER COUNTY



RAGNAR SPRINT WB 2021 COURSE MAPS – WEBER COUNTY



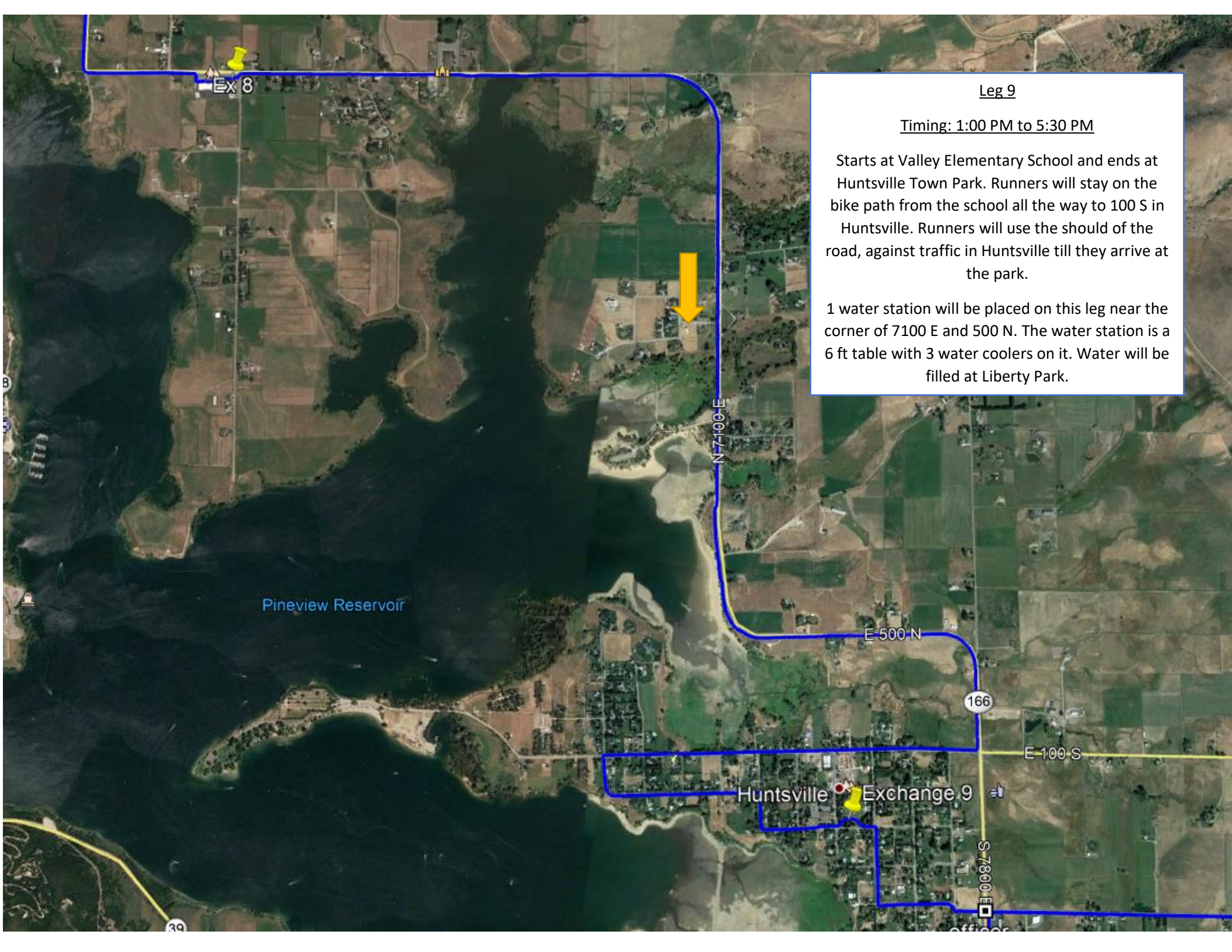
RAGNAR SPRINT WB 2021 COURSE MAPS – WEBER COUNTY



Leg 8

Timing: 12:00 PM to 4:30 PM

Starts at Snow Crest Jr. High School and Ends at Valley Elementary School. Runners will stay on bike path the whole time. Weber County Sheriff Department usually has 2 officers at the intersection of 158 and 162 to help our runners cross. We request this again for 2021.



Leg 9

Timing: 1:00 PM to 5:30 PM

Starts at Valley Elementary School and ends at Huntsville Town Park. Runners will stay on the bike path from the school all the way to 100 S in Huntsville. Runners will use the shoulder of the road, against traffic in Huntsville till they arrive at the park.

1 water station will be placed on this leg near the corner of 7100 E and 500 N. The water station is a 6 ft table with 3 water coolers on it. Water will be filled at Liberty Park.

RAGNAR SPRINT WB 2021 COURSE MAPS – WEBER COUNTY

Leg 10

Timing: 1:30 PM to 6:00 PM

Starts at Huntsville Town Park and ends at Waypoint Academy. Runners on the shoulder of the road with traffic. Weber County Sheriff Dept usually has 2 officers at the intersection of 166 and 500 S to help the runners cross safely. We request this again for 2021.

Leg 10

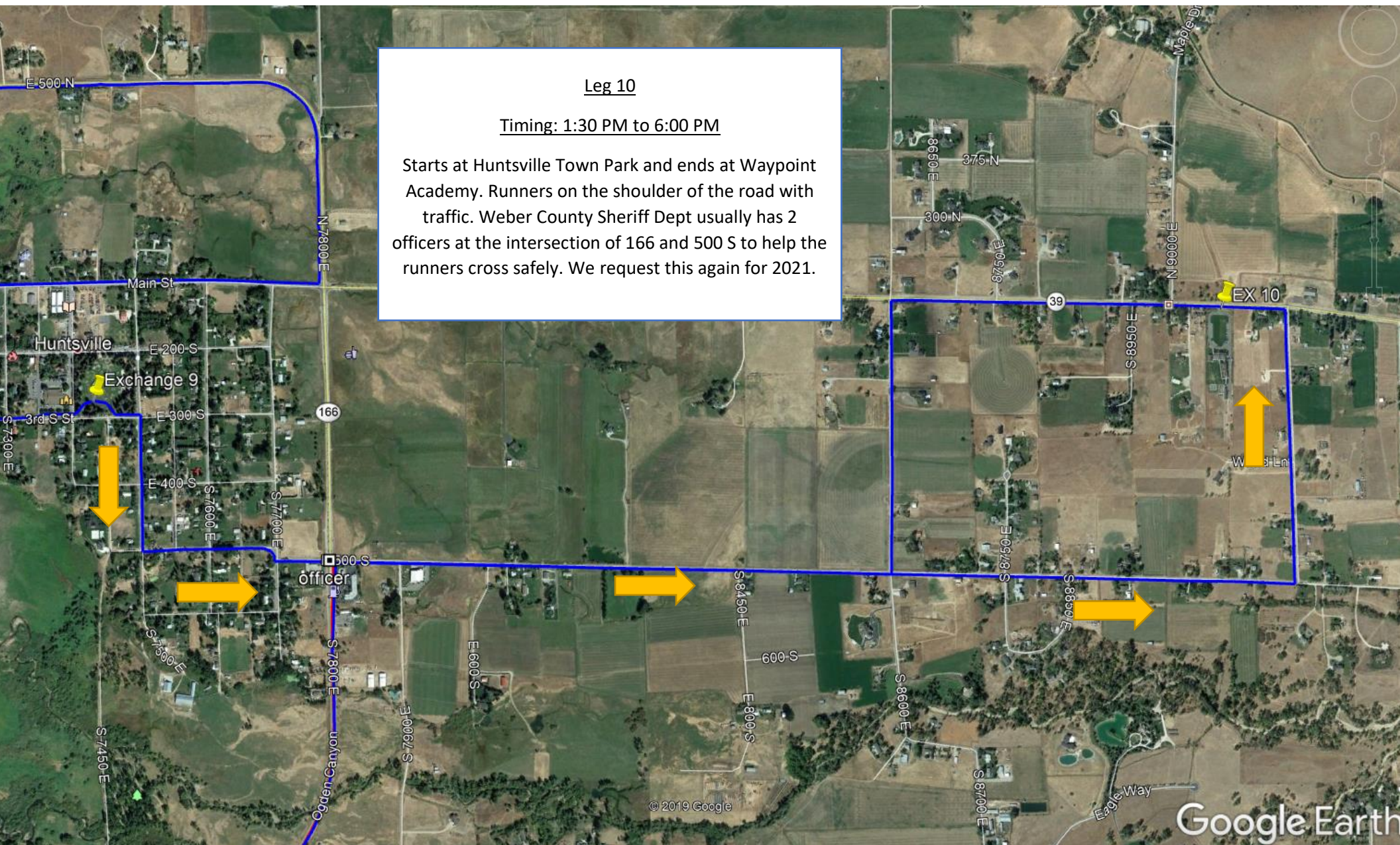
Timing: 1:30 PM to 6:00 PM

Starts at Huntsville Town Park and ends at Waypoint Academy. Runners on the shoulder of the road with traffic. Weber County Sheriff Dept usually has 2 officers at the intersection of 166 and 500 S to help the runners cross safely. We request this again for 2021.

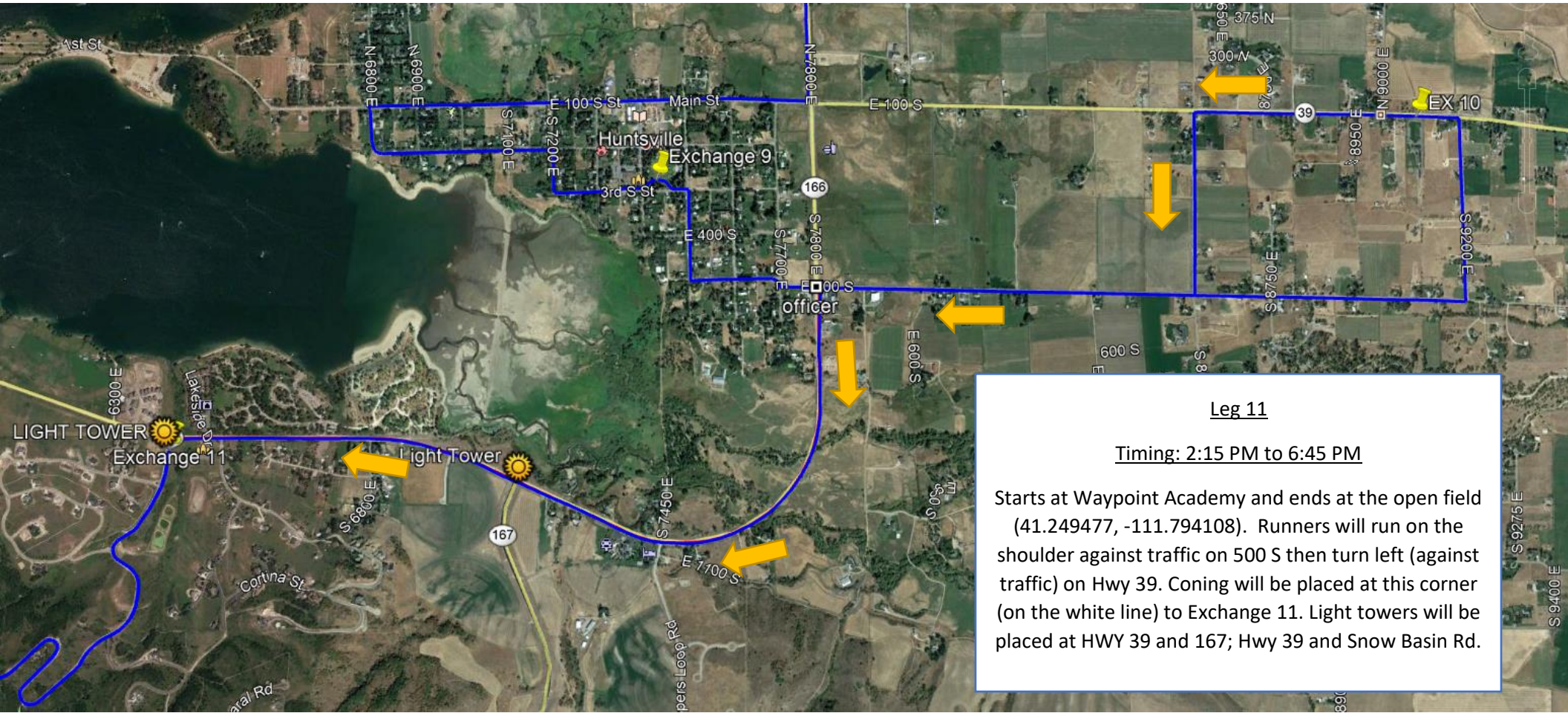
Leg 10

Timing: 1:30 PM to 6:00 PM

Starts at Huntsville Town Park and ends at Waypoint Academy. Runners on the shoulder of the road with traffic. Weber County Sheriff Dept usually has 2 officers at the intersection of 166 and 500 S to help the runners cross safely. We request this again for 2021.



RAGNAR SPRINT WB 2021 COURSE MAPS – WEBER COUNTY



RAGNAR SPRINT WB 2021 COURSE MAPS – WEBER COUNTY

