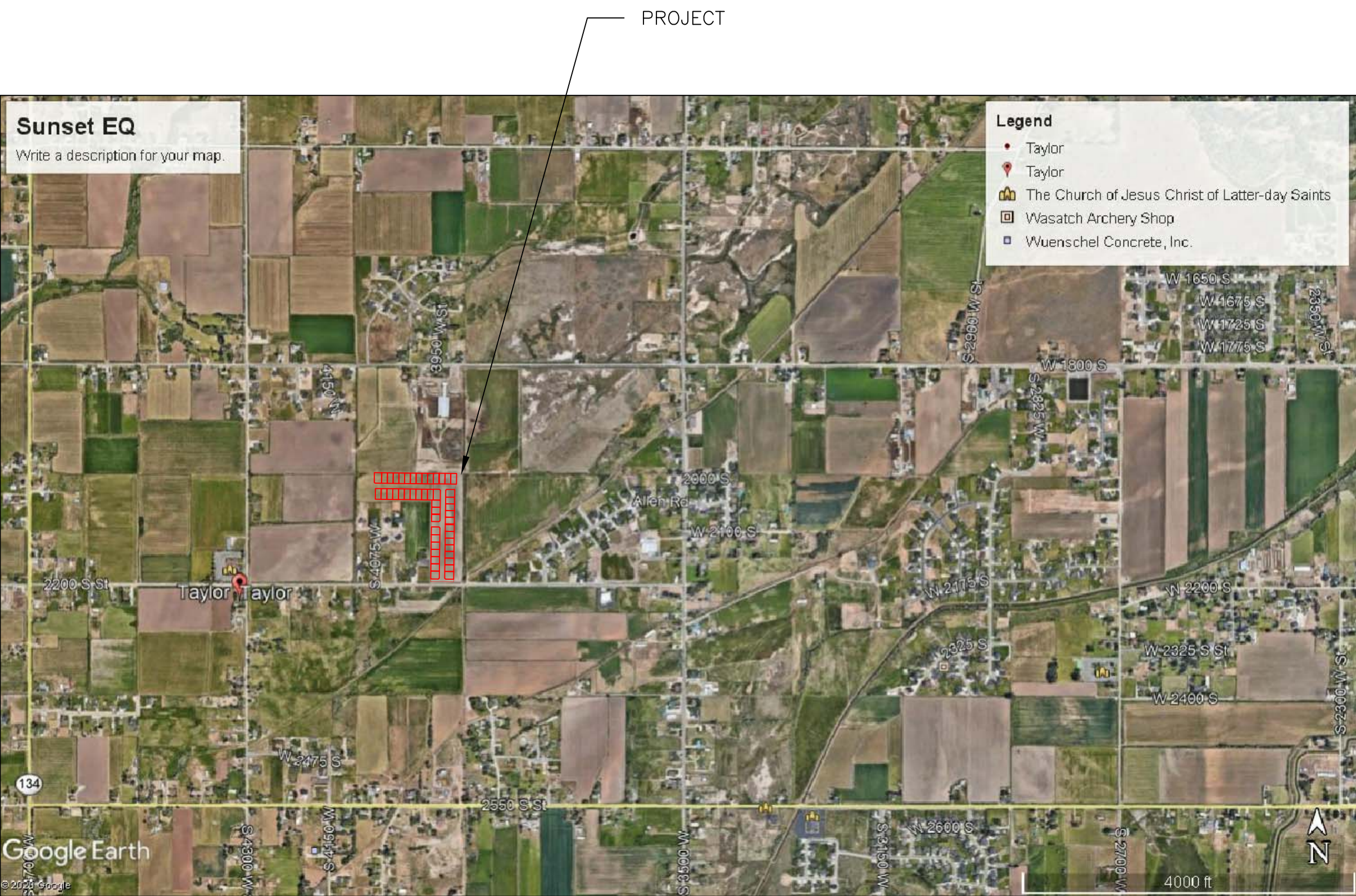


TAYLOR LANDING PHASE 1A/2
A CLUSTER SUBDIVISION
 PART OF THE NORTH HALF OF SECTION 28, TOWNSHIP 6 NORTH,
 RANGE 2 WEST,
 SALT LAKE BASELINE AND MERIDIAN
 WEBER COUNTY, TAYLOR, UTAH
INDEX SHEET



VICINITY MAP

OWNER/DEVELOPER
SIERRA HOMES

CIVIL ENGINEER
ALLIANCE CONSULTING
ENGINEERS, INC.
150 EAST 200 NORTH SUITE P
LOGAN, UTAH 84321
435-755-5121

SHEET INDEX	
SHEET NO.	SHEET DESCRIPTION
1	INDEX SHEET
2	MASTERPLAN
3	3940 WEST/2100 SOUTH ROAD PLAN
4	2025 SOUTH/3900 WEST ROAD PLAN
5	IRRIGATION RE-ROUTE PLAN
6	EAST GRADING/DRAINAGE PLAN
7	WEST GRADING/DRAINAGE PLAN
8	DETAILS

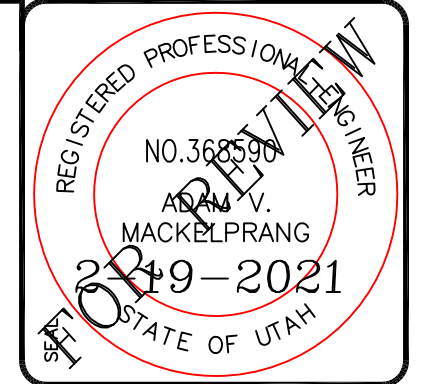
GENERAL NOTES (APPLICABLE TO ALL CIVIL SHEETS):

1. ALL CONSTRUCTION AND MATERIALS SHALL BE IN ACCORDANCE WITH THE PROJECT SPECIFICATIONS, WEBER COUNTY STANDARDS, STATE OF UTAH AND ANY OTHER APPLICABLE STANDARDS ISSUED BY THE CONTROLLING AGENCY.
2. CONTRACTOR SHALL FIELD VERIFY ALL DIMENSIONS BEFORE CONSTRUCTION. ANY DISCREPANCIES BETWEEN CONSTRUCTION DOCUMENTS AND FIELD CONDITIONS SHALL IMMEDIATELY BE BROUGHT TO THE ATTENTION OF THE OWNER. ANY WORK COMPLETED WITHOUT DOING SUCH IS DONE SO AT THE CONTRACTORS EXPENSE.
3. CONTRACTOR SHALL REPAIR AND/OR REPLACE ANY AREAS AND/OR MATERIALS DAMAGED DURING CONSTRUCTION.
4. CONTRACTOR SHALL MAINTAIN ALL ADJACENT PROPERTY (PUBLIC & PRIVATE) FROM ALL CONSTRUCTION DEBRIS.
5. CONTRACTOR SHALL PROVIDE SMOOTH TRANSITION FROM ALL NEW CONSTRUCTION TO EXISTING CONDITIONS.
6. CONTRACTOR SHALL PROVIDE ALL NECESSARY AUTOMOBILE AND PEDESTRIAN TRAFFIC CONTROL DEVICES REQUIRED BY LOCAL, STATE, AND FEDERAL CODES AND ORDINANCES.
7. CONTRACTOR SHALL REPLACE SURVEY MONUMENTS DAMAGED DURING CONSTRUCTION. SURVEY MONUMENTS TO BE REPLACED BY A REGISTERED, LICENSED LAND SURVEYOR.
8. CONTRACTOR TO LOCATE ALL EXISTING UTILITIES, INCLUDING FIBER OPTIC. ANY DAMAGES TO EXISTING UTILITIES WILL BE REPAIRED AT CONTRACTORS EXPENSE.
9. DIMENSIONS SHOWN ARE TO THE CENTER OF THE PIPELINE UNLESS OTHERWISE NOTED.
10. DISTANCES SHOWN ALONG PIPELINES ARE HORIZONTAL DISTANCES AND NOT ACTUAL PIPE LENGTHS. MORE PIPE MAY BE REQUIRED TO COMPLETE CONSTRUCTION THAN IS DIMENSIONED IN THE PLANS.
11. CONTRACTOR IS REQUIRED TO HAVE A SET OF PLANS ON THE SITE AT ALL TIMES. ANY WORK COMPLETED WITHOUT A SET PRESENT IS DONE SO AT THE CONTRACTORS RISK AND EXPENSE IF ERRORS OCCUR.
12. CONTRACTOR IS RESPONSIBLE FOR PROVIDING WATER NECESSARY FOR DUST ABATEMENT, COMPACTION, ETC.
13. THE CONTRACTOR SHALL BE RESPONSIBLE FOR SECURING SOURCES FOR GRANULAR MATERIALS, WATER, WASTE SITES, AND ANY OTHER MATERIALS SOURCES AS REQUIRED FOR PROJECT COMPLETION.
14. ANY WORK DONE WITHIN A PUBLIC RIGHT-OF-WAY SHALL BE COORDINATED WITH THE APPROPRIATE TRANSPORTATION AGENCY AND SHALL MEET THE REQUIREMENTS OF THAT AGENCY AND THE REQUIREMENTS OF ANY RIGHT-OF-WAY OR SPECIAL USE PERMITS.
15. THE CONTRACTOR SHALL COORDINATE ALL LIVE TAPS AND ANY OTHER WORK OR MANIPULATION OF THE EXISTING WATER SYSTEM WITH THE TAYLOR-WEST WEBER WATER IMPROVEMENT DISTRICT, 24 HOURS IN ADVANCE OF AN PRE-CONSTRUCTION MEETING AND CONSTRUCTION ACTIVITY. 801-731-1668.
16. ON SLOPING AREAS THE CONTRACTOR SHALL TAKE PRECAUTIONS TO MITIGATE ANY POSSIBLE EROSION PROBLEMS IN THE TRENCHES DUE TO STORM WATER THAT MIGHT OCCUR DURING OR AFTER CONSTRUCTION AS DIRECTED OR APPROVED BY ENGINEER.
17. THE CONTRACTOR SHALL INSTALL AND MAINTAIN ALL EROSION CONTROL MEASURES AS DETAILED IN THE PROJECT PLANS UNTIL FINAL ACCEPTANCE OF THIS PROJECT.
18. THE CONTRACTOR IS REQUIRED TO TAKE ALL PRECAUTIONS NECESSARY TO INSURE THAT NO STORM WATER/SEDIMENT AND/OR CONSTRUCTION DEBRIS ARE RELEASED FROM THE SITE. ANY RELEASES SHALL BE CLEANED AND MITIGATED AT THE CONTRACTOR'S EXPENSE.
19. CONTRACTOR SHALL COORDINATE ALL CONSTRUCTION ACCESS AND RELATED TRAFFIC CONTROL WITH THE COUNTY, CITY, AND STATE ROADWAY DEPARTMENTS. THE ENGINEER SHALL REVIEW ALL TRAFFIC CONTROL PLANS.
20. CONTRACTOR SHALL PROVIDE ALL NECESSARY FITTINGS, HARDWARE, LABOR, ETC. TO CONSTRUCT VERTICAL AND HORIZONTAL BENDS IN PIPE AS NEEDED TO MEET THE REQUIRED GRADES, ALIGNMENTS AND COVER REQUIREMENTS.
21. ALL AIR RELEASE VALVES SHALL BE INSTALLED AT THE CREST OF THE VERTICAL CURVATURE OF THE WATER LINE. CONTRACTOR SHALL RECORD ACTUAL LOCATION OF VALVES ON FIELD RECORD DRAWINGS.
22. THE CONTRACTOR SHALL COORDINATE WITH WEBER COUNTY FOR ALL UTILITY INSPECTIONS PRIOR TO BACKFILLING.
23. ALL WATER SYSTEM COMPONENTS SHALL BE INSTALLED, PRESSURE TESTED, AND CHLORINATED PRIOR TO COMPLETING ANY ROADWAY CONSTRUCTION.
24. ALL WORK ON THE SECONDARY WATER SYSTEM IS TO BE DONE IN ACCORDANCE WITH HOOPER IRRIGATION COMPANY STANDARDS.

CITY ENGINEER'S CERTIFICATE OF APPROVAL

I hereby approve the above plat having reviewed it for conformity with standard engineering practice and County's Subdivision Ordinance

Date: _____ Weber County Engineer _____



ALLIANCE CONSULTING ENGINEERS
 150 EAST 200 NORTH SUITE P
 LOGAN, UTAH 84321
 (435)755-5121
 allianceeng@questoffice.net

CONFIDENTIALITY AND COPYRIGHT NOTICE
 UNAUTHORIZED USE, DISCLOSURE, OR COPYING OF THIS DRAWING IS PROHIBITED.
 CONSTRUCTION DOCUMENTS THAT ARE DISTRIBUTED FOR CONSTRUCTION SHALL BE DESTROYED WITHIN 30 DAYS AFTER THE END OPENING BY THE PLAN HOLDER.
 COPYRIGHT 2005

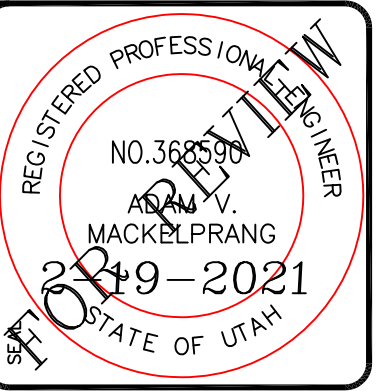
No.	REVISIONS / SUBMISSIONS	DATE	DRAWN	PROJECT NO.

TAYLOR LANDING PHASE 1A/2
A CLUSTER SUBDIVISION
INDEX SHEET

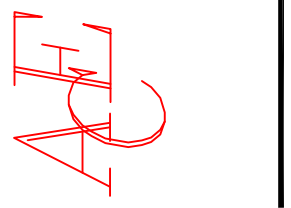
DATE : NOV,2020
 DRAWING No. 1

TAYLOR LANDING PHASE 1A/2 A CLUSTER SUBDIVISION

PART OF THE NORTH HALF OF SECTION 28, TOWNSHIP 6
NORTH, RANGE 2 WEST,
SALT LAKE BASELINE AND MERIDIAN
WEBER COUNTY, TAYLOR, UTAH
3940 WEST/2100 SOUTH ROAD PLAN



ALLIANCE CONSULTING ENGINEERS
150 EAST 200 NORTH SUITE P
LOGAN, UTAH 84321
alliancelogan@yahoo.com

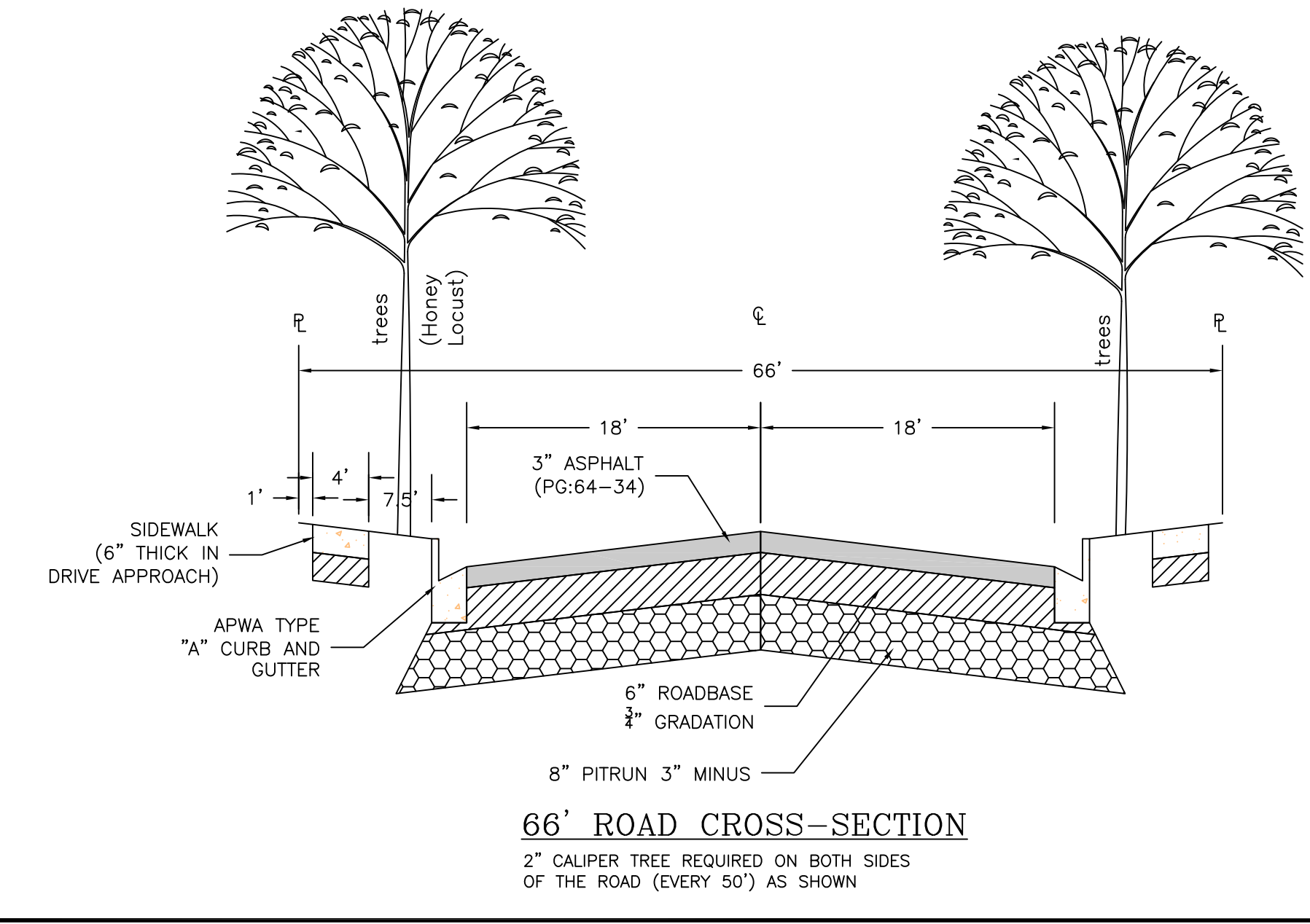
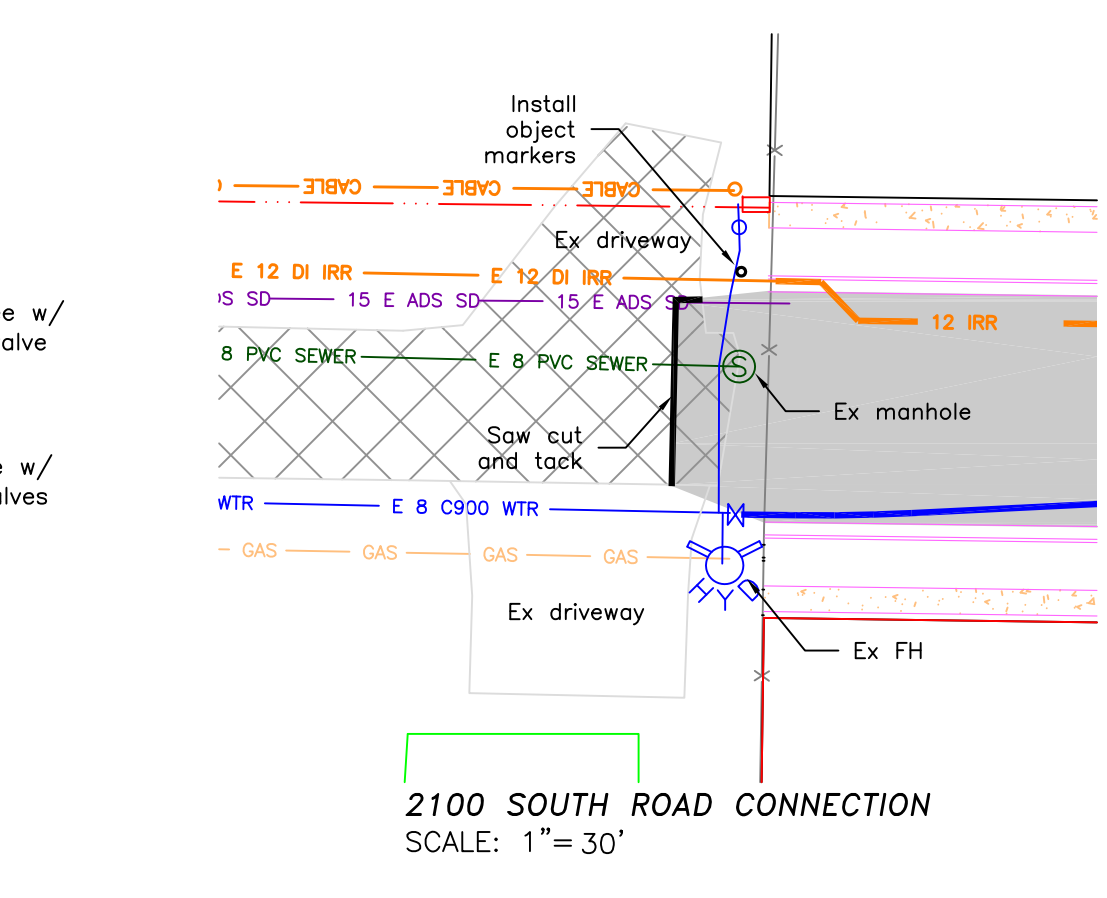
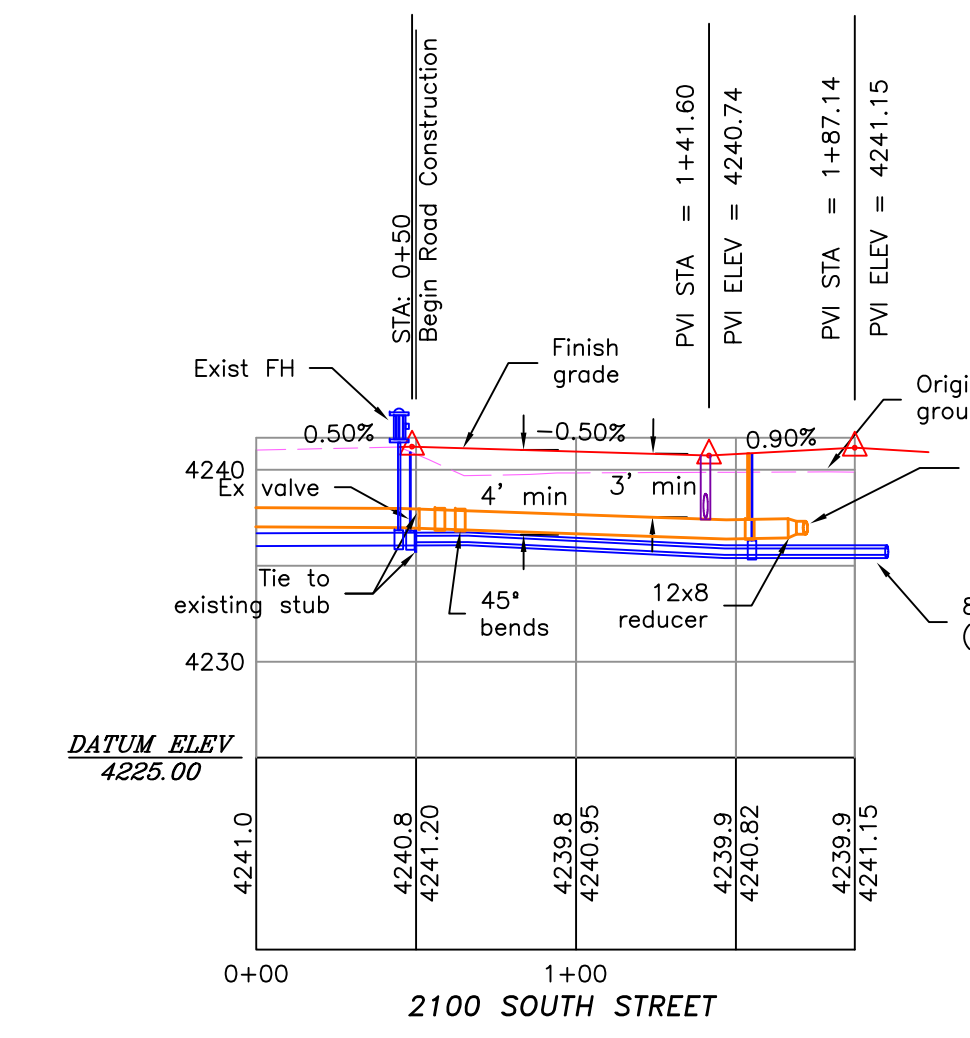
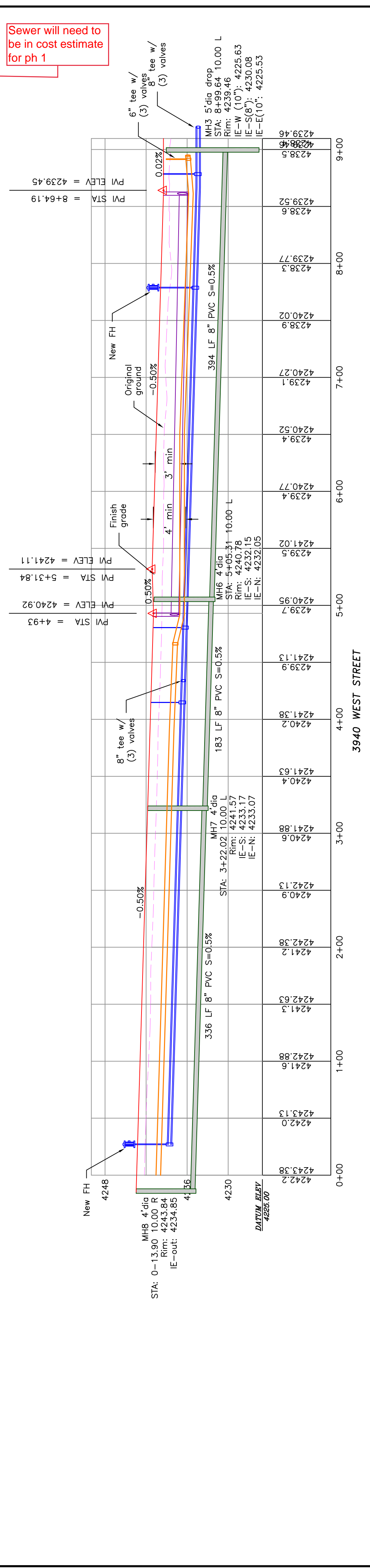
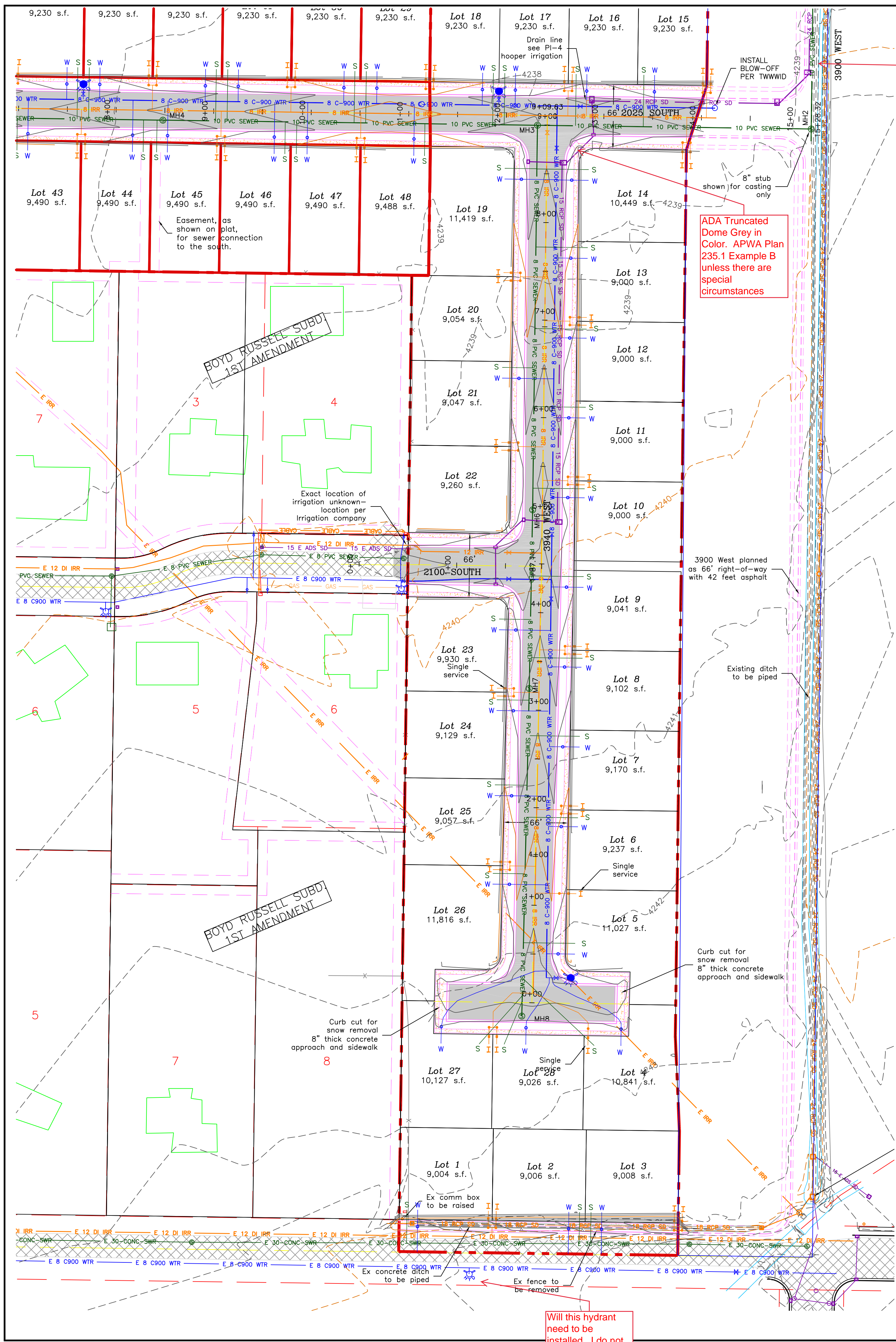


CONFIDENTIALITY AND COPYRIGHT NOTICE
UNAUTHORIZED USE, DISCLOSURE, OR COPYING OF THIS DRAWING IS PROHIBITED.
CONSTRUCTION DOCUMENTS THAT ARE DISTRIBUTED FOR BIDDING PURPOSES SHALL NOT BE RETURNED AND SHALL BE DESTROYED WITHIN 30 DAYS AFTER THE BID OPENING BY THE PLAN HOLDER.
COPYRIGHT 2005

NO.	REVISIONS / SUBMISSIONS	DATE

PROJECT TITLE
**TAYLOR LANDING PHASE 1A/2
A CLUSTER SUBDIVISION
3940 WEST/2100 SOUTH ROAD PLAN**

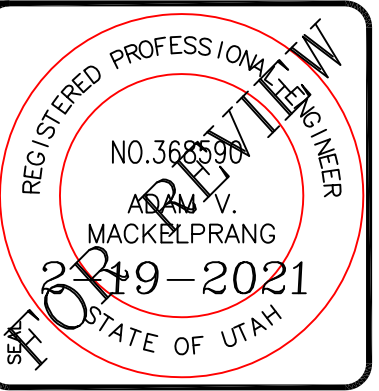
DATE: NOV.2020
DRAWING No. **3**



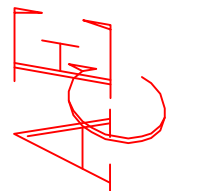
TAYLOR LANDING PHASE 1A/2

A CLUSTER SUBDIVISION
PART OF THE NORTH HALF OF SECTION 28, TOWNSHIP 6
NORTH, RANGE 2 WEST,
SALT LAKE BASELINE AND MERIDIAN
WEBER COUNTY, UTAH

2025 SOUTH/3900 WEST ROAD PLAN



ALLIANCE CONSULTING ENGINEERS
150 EAST 200 NORTH SUITE P
LOGAN, UTAH 84321
alliancelogan@yahoo.com

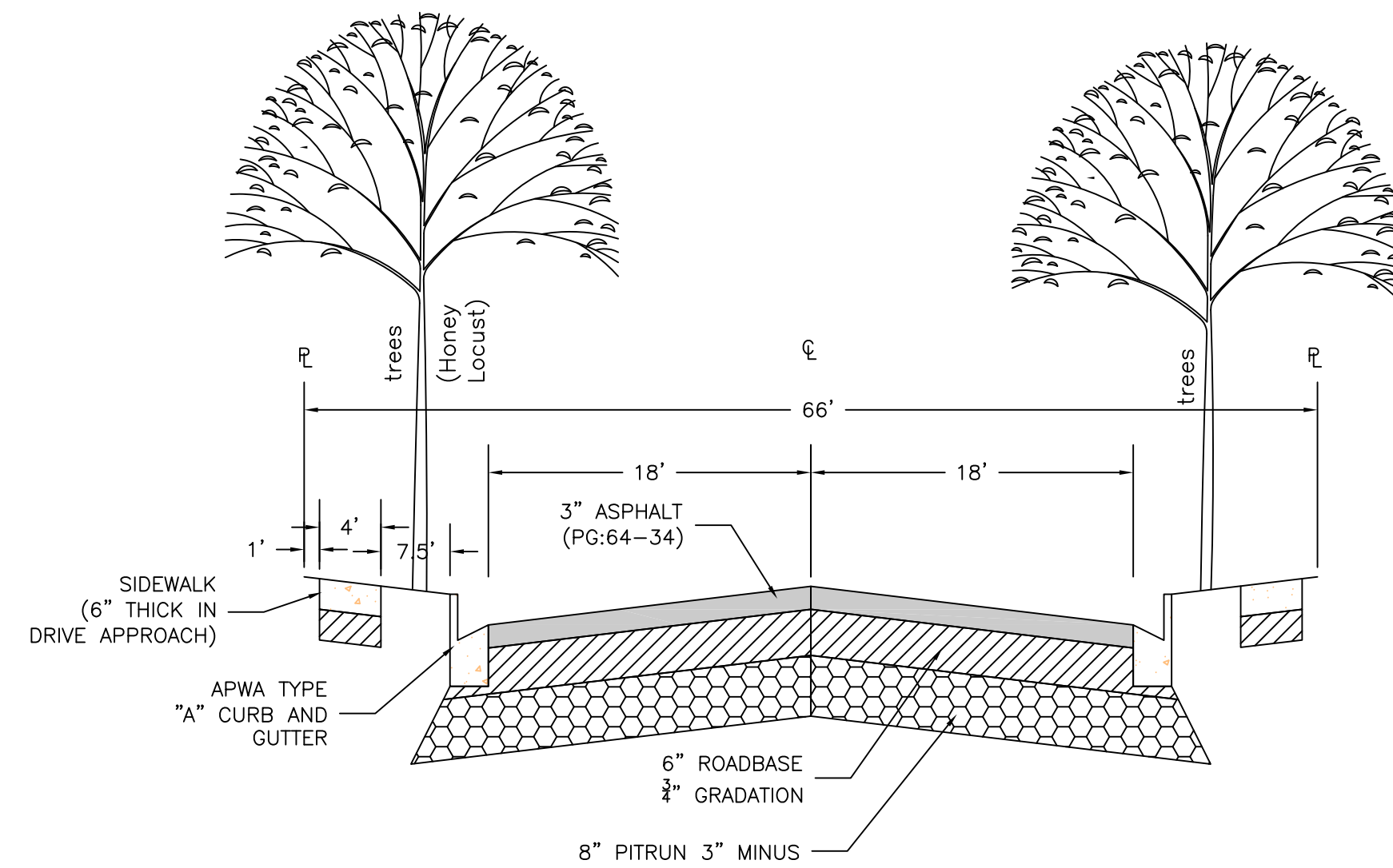


CONFIDENTIALITY AND COPYRIGHT NOTICE
UNAUTHORIZED USE, DISCLOSURE, OR COPYING OF THIS DRAWING IS PROHIBITED.
CONSTRUCTION DOCUMENTS THAT ARE DISTRIBUTED FOR BIDDING PURPOSES SHALL NOT BE RETURNED AND SHALL BE DESTROYED WITHIN 30 DAYS AFTER THE BIDDING PERIOD BY THE PLAN HOLDER.
COPYRIGHT 2005

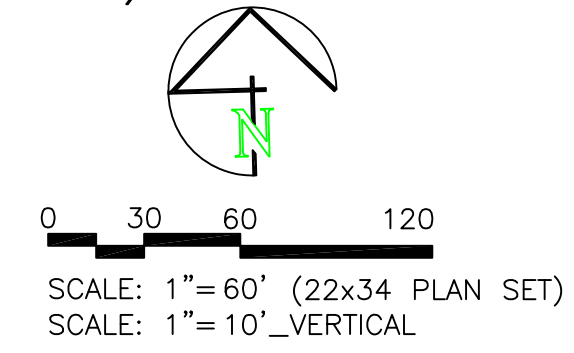
NO.	REVISIONS / SUBMISSIONS	DATE

PROJECT TITLE
TAYLOR LANDING PHASE 1A/2
A CLUSTER SUBDIVISION
DRAWING TITLE
2025 SOUTH/3900 WEST ROAD PLAN

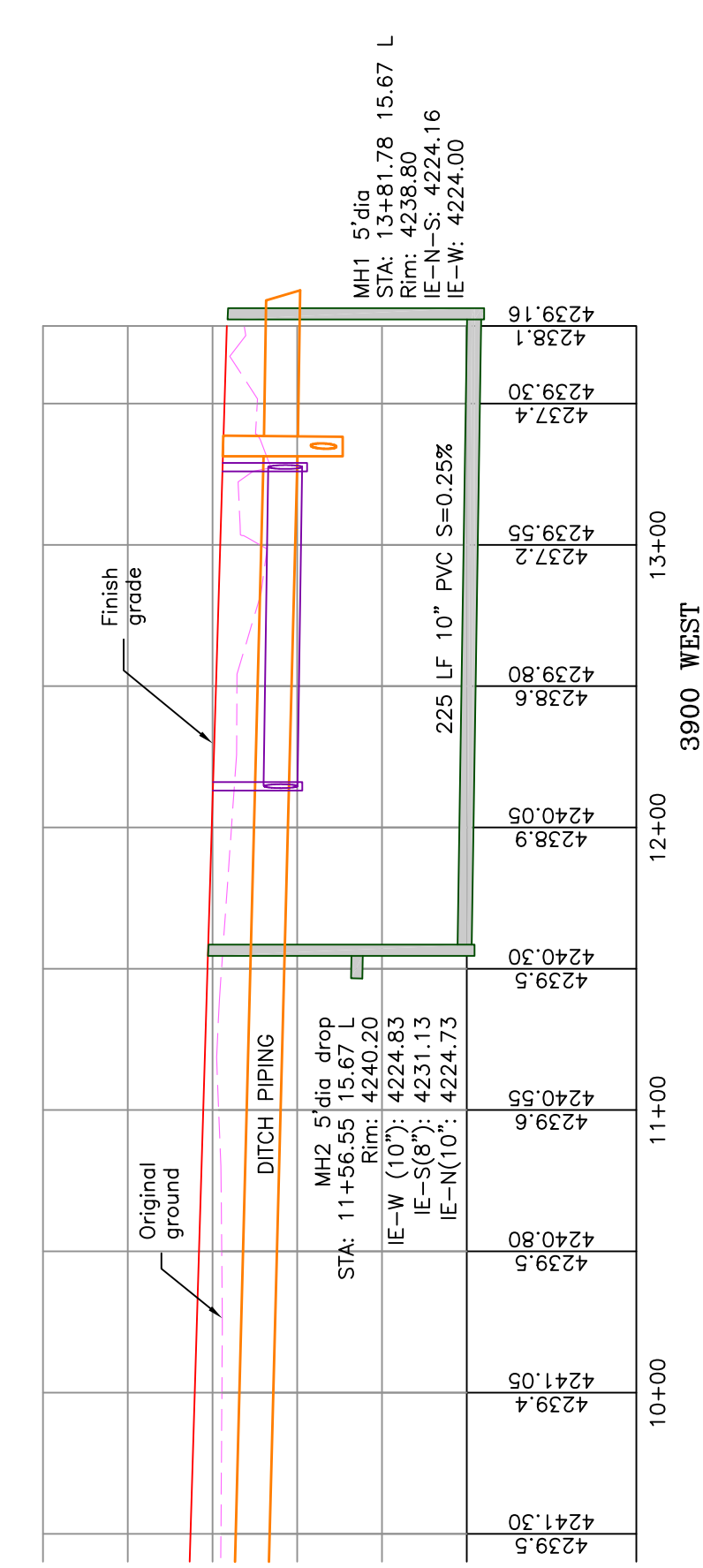
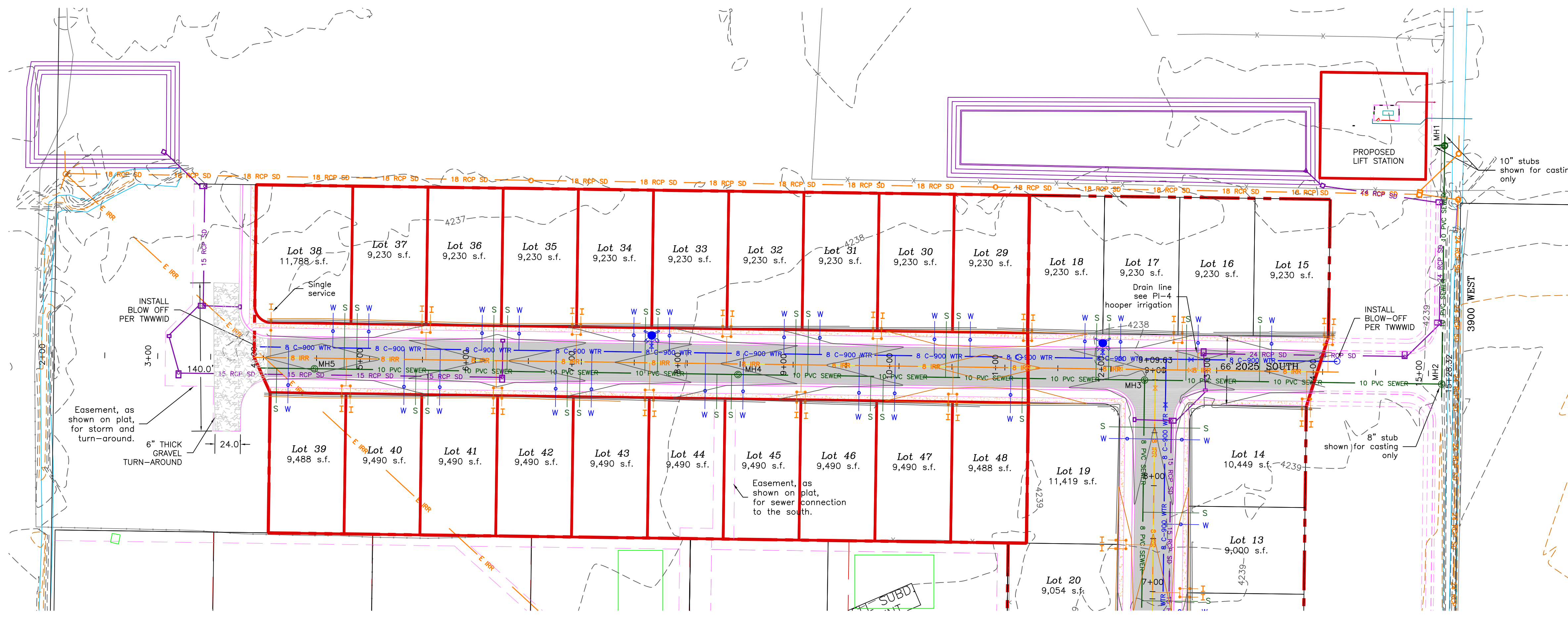
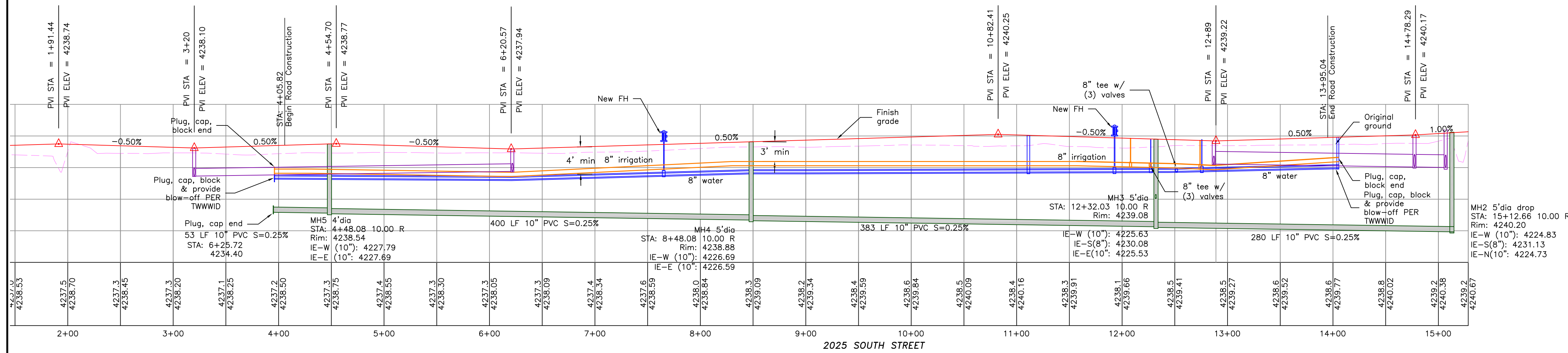
DATE : NOV, 2020
DRAWING No. **4**

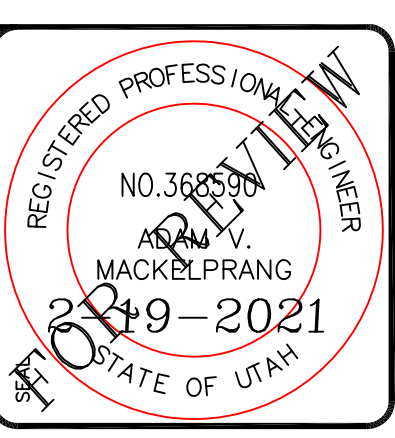


66' ROAD CROSS-SECTION
2" CALIPER TREE REQUIRED ON BOTH SIDES OF THE ROAD (EVERY 50') AS SHOWN



- BOUNDARY LINE
- LOT LINE
- CENTERLINE
- UTILITY EASEMENT LINE
- FUTURE ROAD SHOWN FOR REFERENCE
- EXISTING FENCE
- EXISTING DITCH
- E 8 C-900 WTR
- 8 C-900 WTR
- E 30'-CONC-SWR
- 8 PVC SEWER
- 10 PVC SEWER
- S
- E 12 DI IRR
- 8 IRR
- 12 IRR
- I
- 15 E ADS SD
- 15 RCP SD
- EXISTING MAJOR CONTOUR (5')
- EXISTING MINOR CONTOUR (1')
- EXISTING ASPHALT
- PROPOSED ASPHALT
- PROPOSED CONCRETE





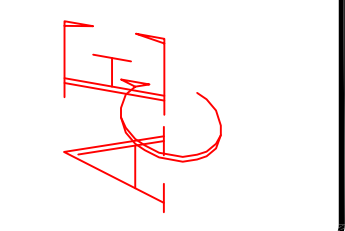
TAYLOR LANDING PHASE 1A/2

A CLUSTER SUBDIVISION

PART OF THE NORTH HALF OF SECTION 28, TOWNSHIP 6 NORTH, RANGE 2 WEST, SALT LAKE BASILINE AND MERIDIAN WEBER COUNTY, TAYLOR, UTAH

IRRIGATION RE-ROUTE

ALLIANCE CONSULTING ENGINEERS
 150 EAST 200 NORTH SUITE P
 LOGAN, UTAH 84321
 (435)755-5121
 alliance@allianceeng.com



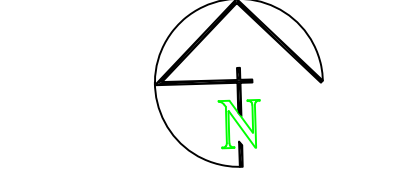
CONFIDENTIALITY AND COPYRIGHT NOTICE
 UNAUTHORIZED USE, DISCLOSURE, OR COPYING OF THIS DRAWING IS PROHIBITED.
 CONSTRUCTION DOCUMENTS THAT ARE DISTRIBUTED FOR BIDDING PURPOSES SHALL NOT BE RETURNED AND SHALL BE DESTROYED WITHIN 30 DAYS AFTER THE BIDDING PERIOD.
 BY THE PLAN HOLDER.

COPYRIGHT 2005

NO.	REVISIONS / SUBMISSIONS	DATE

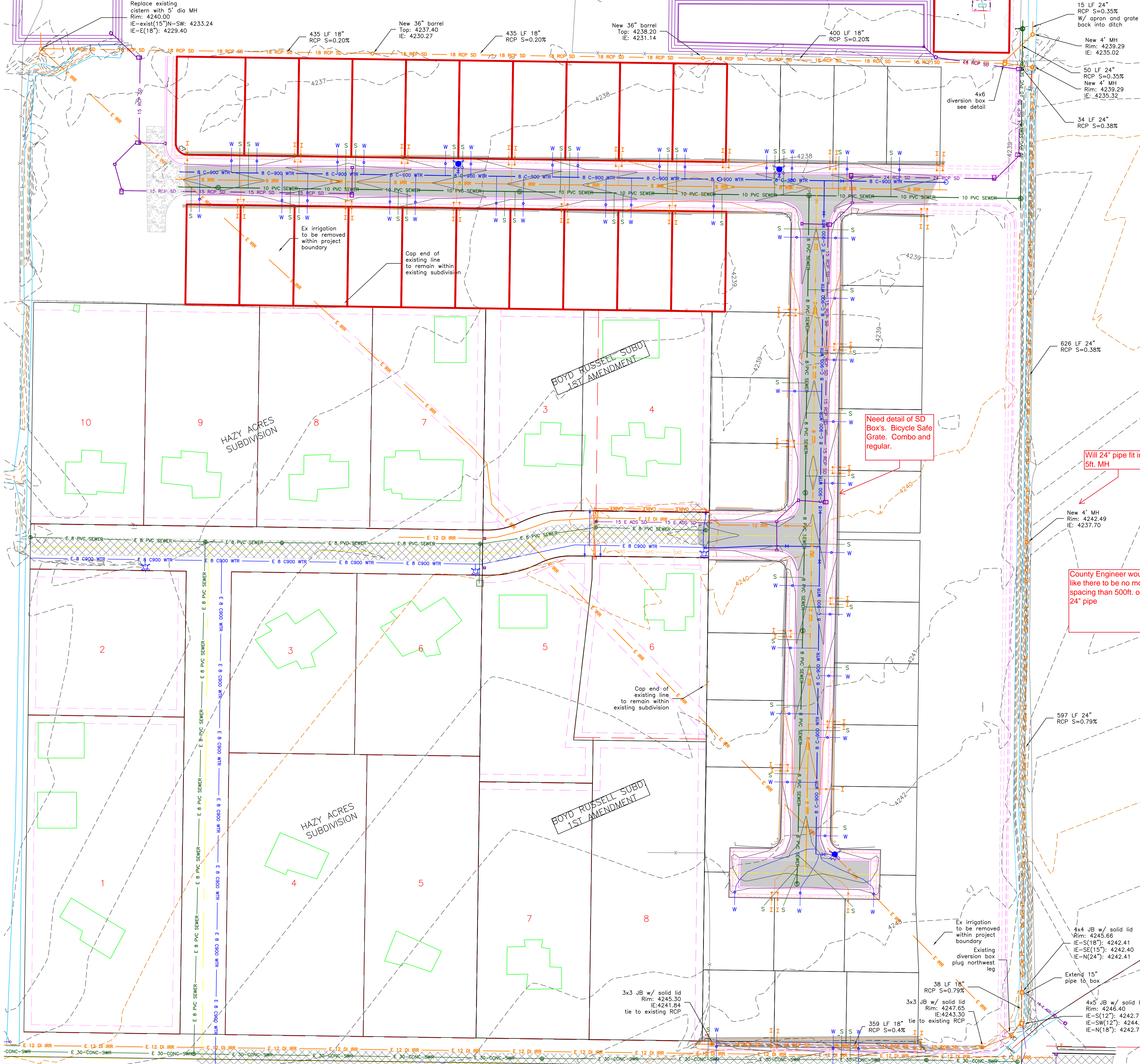
PROJECT TITLE: **TAYLOR LANDING PHASE 1A/2**
 A CLUSTER SUBDIVISION
 IRRIGATION RE-ROUTE

DATE: NOV, 2020
 DRAWING NO. 5



0 30 60 120
 SCALE: 1"=60' (22x34 PLAN SET)
 SCALE: 1"=10' VERTICAL

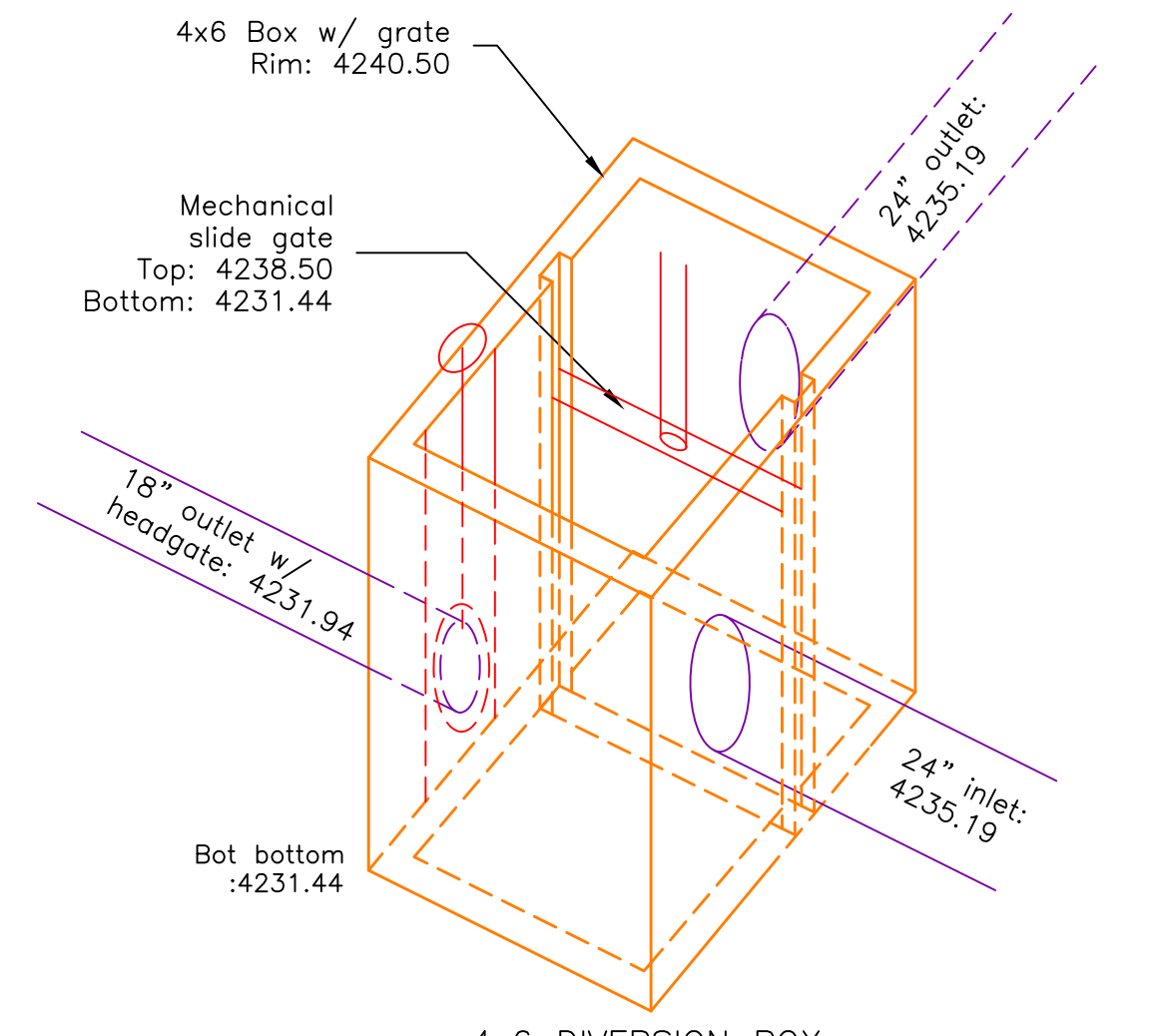
- BOUNDARY LINE
- LOT LINE
- CENTERLINE
- UTILITY EASEMENT LINE
- FUTURE ROAD SHOWN FOR REFERENCE
- EXISTING FENCE
- EXISTING DITCH
- EXISTING WATER AS NOTED
- PROPOSED 8" PVC C-900 DR 18 WATER
- PROPOSED 1" CTS 200 PSI POLY WATER SERVICE
- EXISTING SEWER AS NOTED
- PROPOSED 8" SDR 35 SEWER AS NOTED
- PROPOSED 10" SDR 35 SEWER AS NOTED
- PROPOSED 4" SEWER LATERAL
- EXISTING 12" DI IRRIGATION
- PROPOSED 8" PVC C-900 DR18 IRRIGATION MAIN
- PROPOSED 12" PVC C-909 DR18 IRRIGATION MAIN
- PROPOSED IRRIGATION SERVICE PER HOOPER IRRIGATION COMPANY (see PI-10 hooper irrigation, double service unless otherwise noted)
- EXISTING STORM SYSTEM
- PROPOSED STORM SYSTEM AS NOTED
- EXISTING MAJOR CONTOUR (5')
- EXISTING MINOR CONTOUR (1')
- EXISTING ASPHALT
- PROPOSED ASPHALT
- PROPOSED CONCRETE



Need detail of SD Box's, Bicycle Safe Gate, Combo and regular.

Will 24" pipe fit in a 5ft. MH

County Engineer would like there to be no more spacing than 500ft. on the 24" pipe



4x6 DIVERSION BOX

With mechanical slide gate open water freely flows through the box and out the 24" outlet. With the mechanical slide gate closed the 18" irrigation outlet can be opened and allow water to pass through for irrigation purposes to the west. If both gates are accidentally left closed water will pass over the mechanical slide gate and out the 24" outlet.

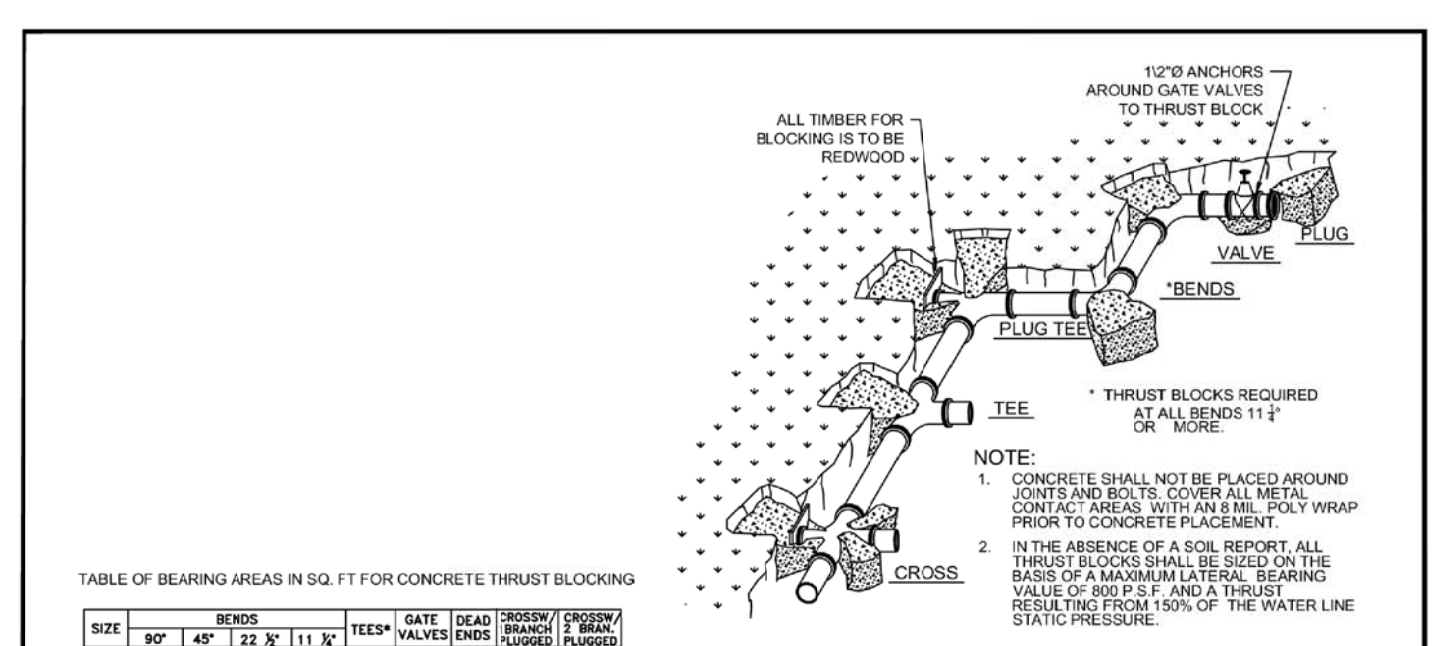
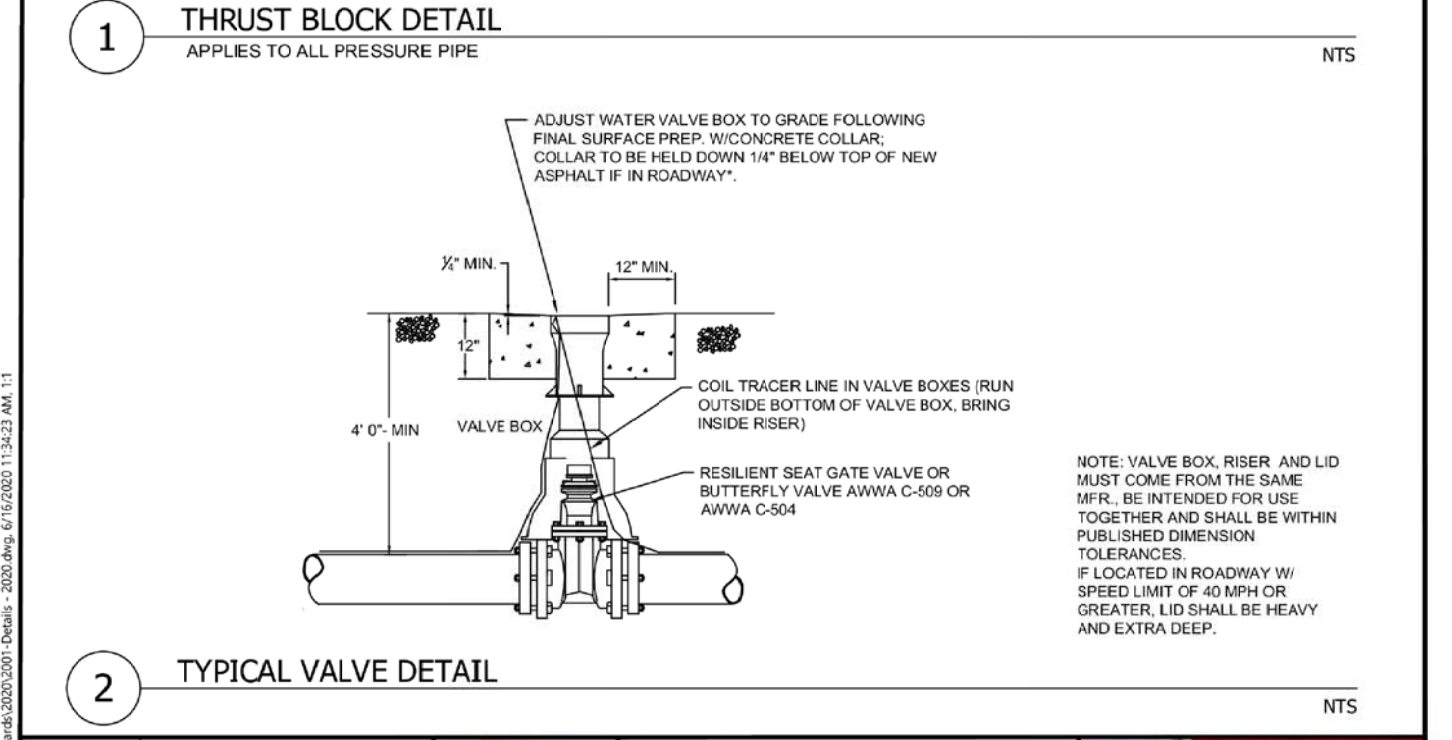
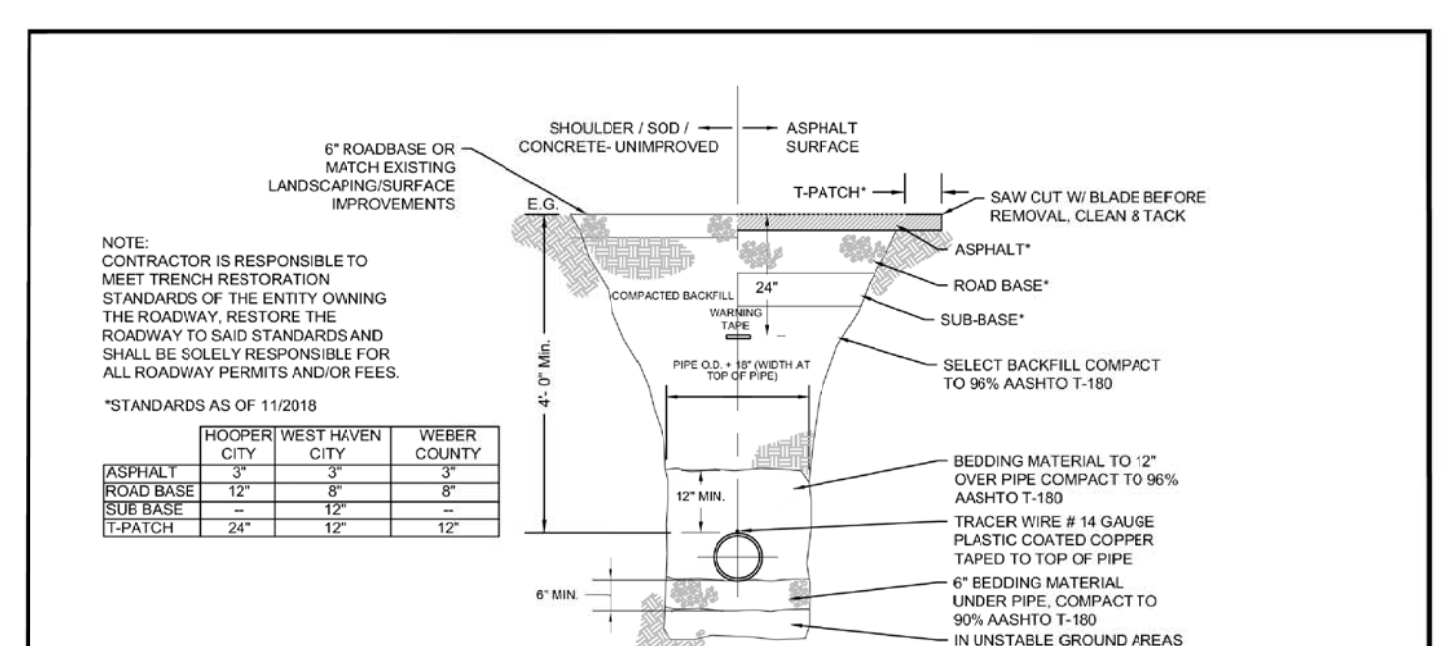


TABLE OF BEARING AREAS IN SQ. FT. FOR CONCRETE THRUST BLOCKING

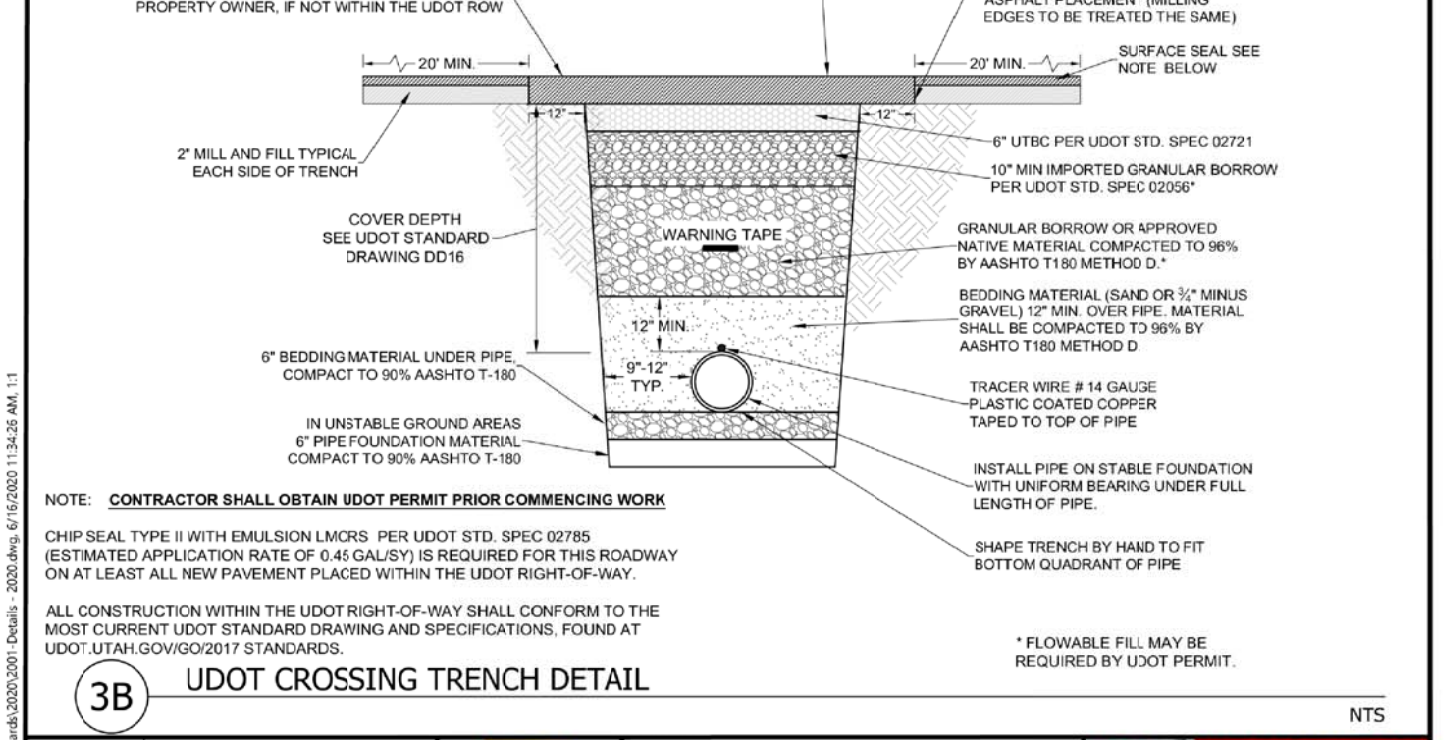
SOIL	BEARS	TEES	CROSSES	BENDS	VALVES	COUPLERS	FLANGES
3	1.0	0.5	0.5	1.0	0.5	0.5	0.5
4	1.5	0.5	0.5	1.5	0.5	0.5	0.5
5	2.0	1.0	1.0	2.0	1.0	1.0	1.0
6	2.5	1.5	1.5	2.5	1.5	1.5	1.5
7	3.0	2.0	2.0	3.0	2.0	2.0	2.0
8	3.5	2.5	2.5	3.5	2.5	2.5	2.5
9	4.0	3.0	3.0	4.0	3.0	3.0	3.0
10	4.5	3.5	3.5	4.5	3.5	3.5	3.5
11	5.0	4.0	4.0	5.0	4.0	4.0	4.0
12	5.5	4.5	4.5	5.5	4.5	4.5	4.5
13	6.0	5.0	5.0	6.0	5.0	5.0	5.0
14	6.5	5.5	5.5	6.5	5.5	5.5	5.5
15	7.0	6.0	6.0	7.0	6.0	6.0	6.0
16	7.5	6.5	6.5	7.5	6.5	6.5	6.5
17	8.0	7.0	7.0	8.0	7.0	7.0	7.0
18	8.5	7.5	7.5	8.5	7.5	7.5	7.5
19	9.0	8.0	8.0	9.0	8.0	8.0	8.0
20	9.5	8.5	8.5	9.5	8.5	8.5	8.5
21	10.0	9.0	9.0	10.0	9.0	9.0	9.0
22	10.5	9.5	9.5	10.5	9.5	9.5	9.5
23	11.0	10.0	10.0	11.0	10.0	10.0	10.0
24	11.5	10.5	10.5	11.5	10.5	10.5	10.5
25	12.0	11.0	11.0	12.0	11.0	11.0	11.0
26	12.5	11.5	11.5	12.5	11.5	11.5	11.5
27	13.0	12.0	12.0	13.0	12.0	12.0	12.0
28	13.5	12.5	12.5	13.5	12.5	12.5	12.5
29	14.0	13.0	13.0	14.0	13.0	13.0	13.0
30	14.5	13.5	13.5	14.5	13.5	13.5	13.5
31	15.0	14.0	14.0	15.0	14.0	14.0	14.0
32	15.5	14.5	14.5	15.5	14.5	14.5	14.5
33	16.0	15.0	15.0	16.0	15.0	15.0	15.0
34	16.5	15.5	15.5	16.5	15.5	15.5	15.5
35	17.0	16.0	16.0	17.0	16.0	16.0	16.0
36	17.5	16.5	16.5	17.5	16.5	16.5	16.5
37	18.0	17.0	17.0	18.0	17.0	17.0	17.0
38	18.5	17.5	17.5	18.5	17.5	17.5	17.5
39	19.0	18.0	18.0	19.0	18.0	18.0	18.0
40	19.5	18.5	18.5	19.5	18.5	18.5	18.5
41	20.0	19.0	19.0	20.0	19.0	19.0	19.0
42	20.5	19.5	19.5	20.5	19.5	19.5	19.5
43	21.0	20.0	20.0	21.0	20.0	20.0	20.0
44	21.5	20.5	20.5	21.5	20.5	20.5	20.5
45	22.0	21.0	21.0	22.0	21.0	21.0	21.0
46	22.5	21.5	21.5	22.5	21.5	21.5	21.5
47	23.0	22.0	22.0	23.0	22.0	22.0	22.0
48	23.5	22.5	22.5	23.5	22.5	22.5	22.5
49	24.0	23.0	23.0	24.0	23.0	23.0	23.0
50	24.5	23.5	23.5	24.5	23.5	23.5	23.5
51	25.0	24.0	24.0	25.0	24.0	24.0	24.0
52	25.5	24.5	24.5	25.5	24.5	24.5	24.5
53	26.0	25.0	25.0	26.0	25.0	25.0	25.0
54	26.5	25.5	25.5	26.5	25.5	25.5	25.5
55	27.0	26.0	26.0	27.0	26.0	26.0	26.0
56	27.5	26.5	26.5	27.5	26.5	26.5	26.5
57	28.0	27.0	27.0	28.0	27.0	27.0	27.0
58	28.5	27.5	27.5	28.5	27.5	27.5	27.5
59	29.0	28.0	28.0	29.0	28.0	28.0	28.0
60	29.5	28.5	28.5	29.5	28.5	28.5	28.5
61	30.0	29.0	29.0	30.0	29.0	29.0	29.0
62	30.5	29.5	29.5	30.5	29.5	29.5	29.5
63	31.0	30.0	30.0	31.0	30.0	30.0	30.0
64	31.5	30.5	30.5	31.5	30.5	30.5	30.5
65	32.0	31.0	31.0	32.0	31.0	31.0	31.0
66	32.5	31.5	31.5	32.5	31.5	31.5	31.5
67	33.0	32.0	32.0	33.0	32.0	32.0	32.0
68	33.5	32.5	32.5	33.5	32.5	32.5	32.5
69	34.0	33.0	33.0	34.0	33.0	33.0	33.0
70	34.5	33.5	33.5	34.5	33.5	33.5	33.5
71	35.0	34.0	34.0	35.0	34.0	34.0	34.0
72	35.5	34.5	34.5	35.5	34.5	34.5	34.5
73	36.0	35.0	35.0	36.0	35.0	35.0	35.0
74	36.5	35.5	35.5	36.5	35.5	35.5	35.5
75	37.0	36.0	36.0	37.0	36.0	36.0	36.0
76	37.5	36.5	36.5	37.5	36.5	36.5	36.5
77	38.0	37.0	37.0	38.0	37.0	37.0	37.0
78	38.5	37.5	37.5	38.5	37.5	37.5	37.5
79	39.0	38.0	38.0	39.0	38.0	38.0	38.0
80	39.5	38.5	38.5	39.5	38.5	38.5	38.5
81	40.0	39.0	39.0	40.0	39.0	39.0	39.0
82	40.5	39.5	39.5	40.5	39.5	39.5	39.5
83	41.0	40.0	40.0	41.0	40.0	40.0	40.0
84	41.5	40.5	40.5	41.5	40.5	40.5	40.5
85	42.0	41.0	41.0	42.0	41.0	41.0	41.0
86	42.5	41.5	41.5	42.5	41.5	41.5	41.5
87	43.0	42.0	42.0	43.0	42.0	42.0	42.0
88	43.5	42.5	42.5	43.5	42.5	42.5	42.5
89	44.0	43.0	43.0	44.0	43.0	43.0	43.0
90	44.5	43.5	43.5	44.5	43.5	43.5	43.5
91	45.0	44.0	44.0	45.0	44.0	44.0	44.0
92	45.5	44.5	44.5	45.5	44.5	44.5	44.5
93	46.0	45.0	45.0	46.0	45.0	45.0	45.0
94	46.5	45.5	45.5	46.5	45.5	45.5	45.5
95	47.0	46.0	46.0	47.0	46.0	46.0	46.0
96	47.5	46.5	46.5	47.5	46.5	46.5	46.5
97	48.0	47.0	47.0	48.0	47.0	47.0	47.0
98	48.5	47.5	47.5	48.5	47.5	47.5	47.5
99	49.0	48.0	48.0	49.0	48.0	48.0	48.0
100	49.5	48.5	48.5	49.5	48.5	48.5	48.5



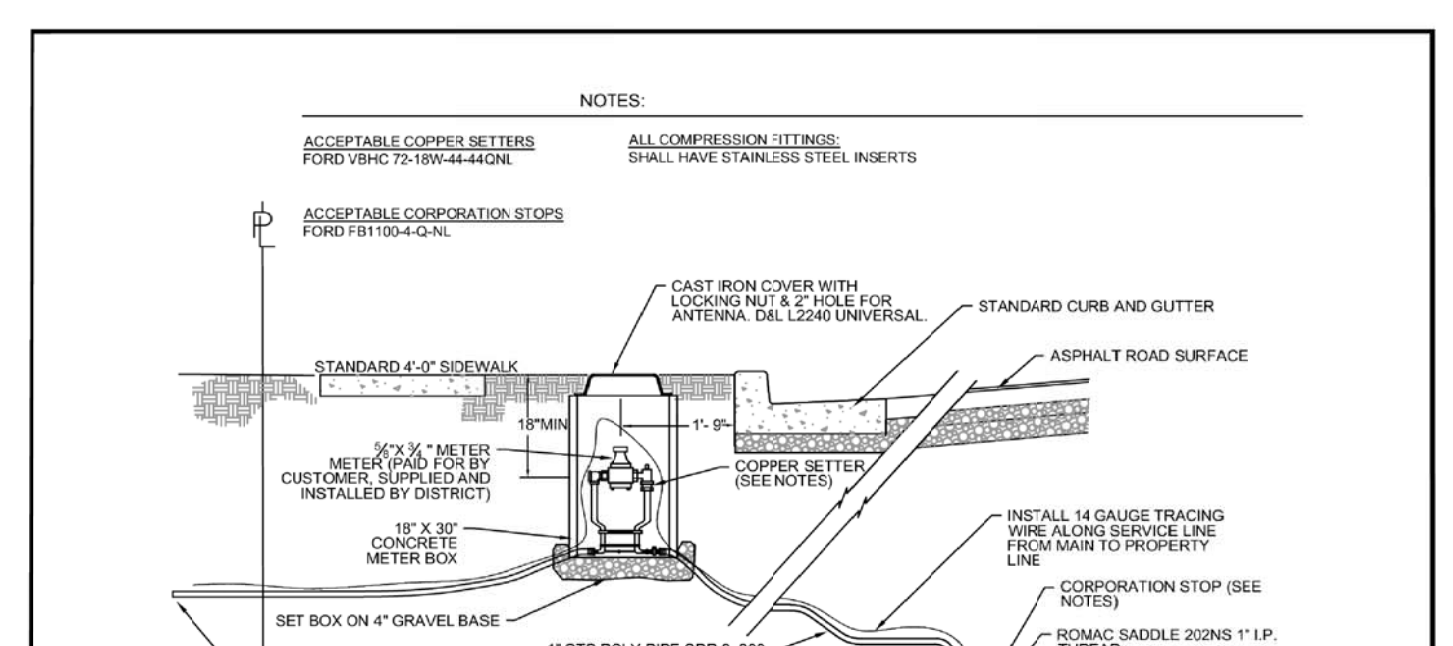
STANDARD WATER DETAILS
TAYLOR WEST WEBER
WATER IMPROVEMENT DISTRICT
THRUST BLOCK DETAIL
TYPICAL VALVE DETAIL
SHEET 1



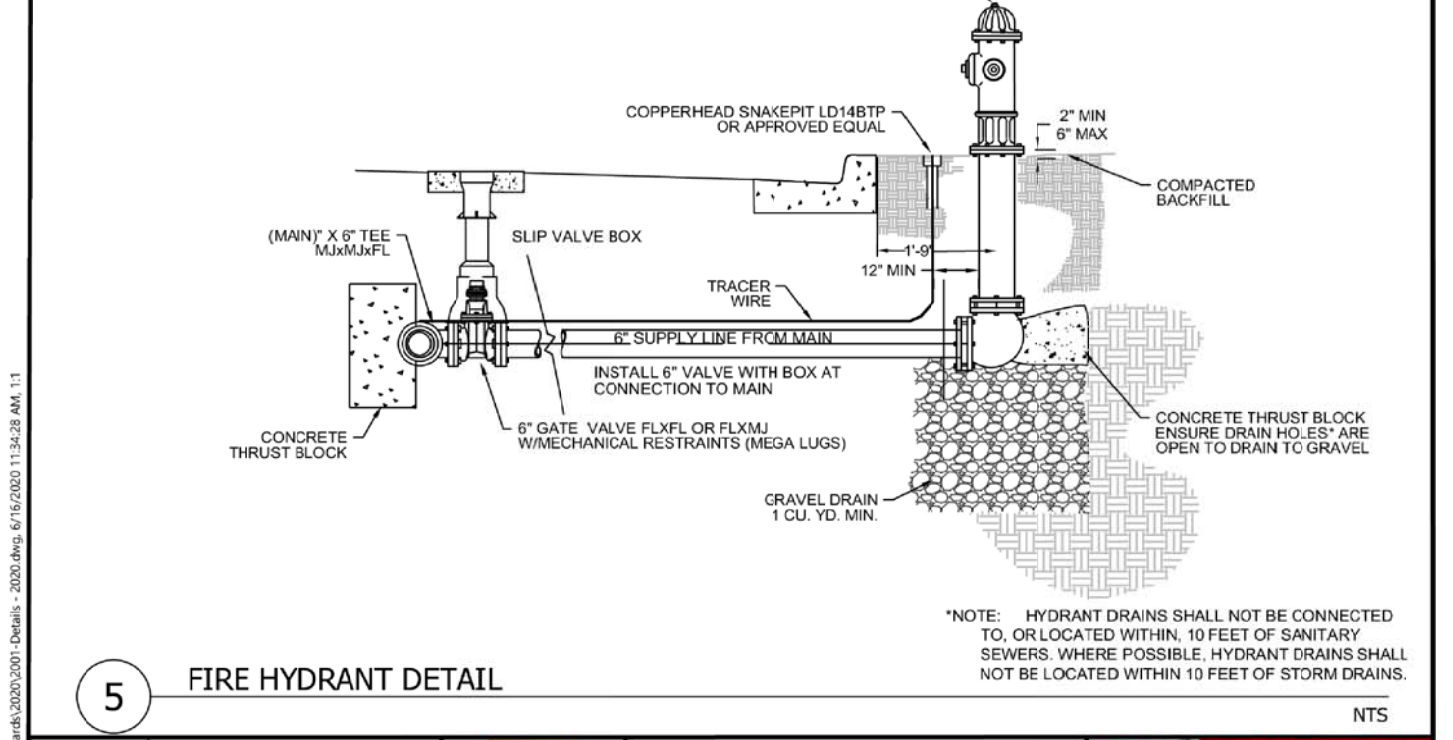
STANDARD WATER DETAILS
TAYLOR WEST WEBER
WATER IMPROVEMENT DISTRICT
TYPICAL TRENCH SECTION
SHEET 2



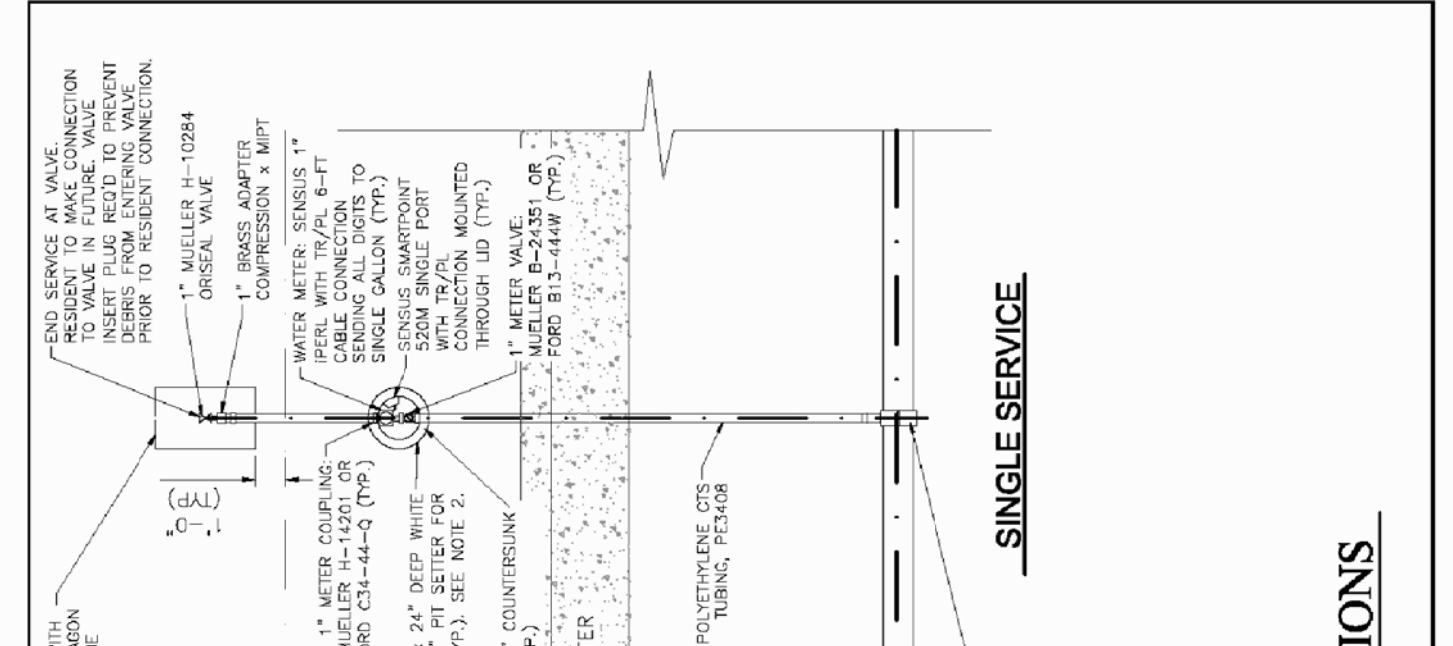
STANDARD WATER DETAILS
TAYLOR WEST WEBER
WATER IMPROVEMENT DISTRICT
TYPICAL TRENCH SECTION
UDOT CROSSING TRENCH DETAIL
SHEET 2



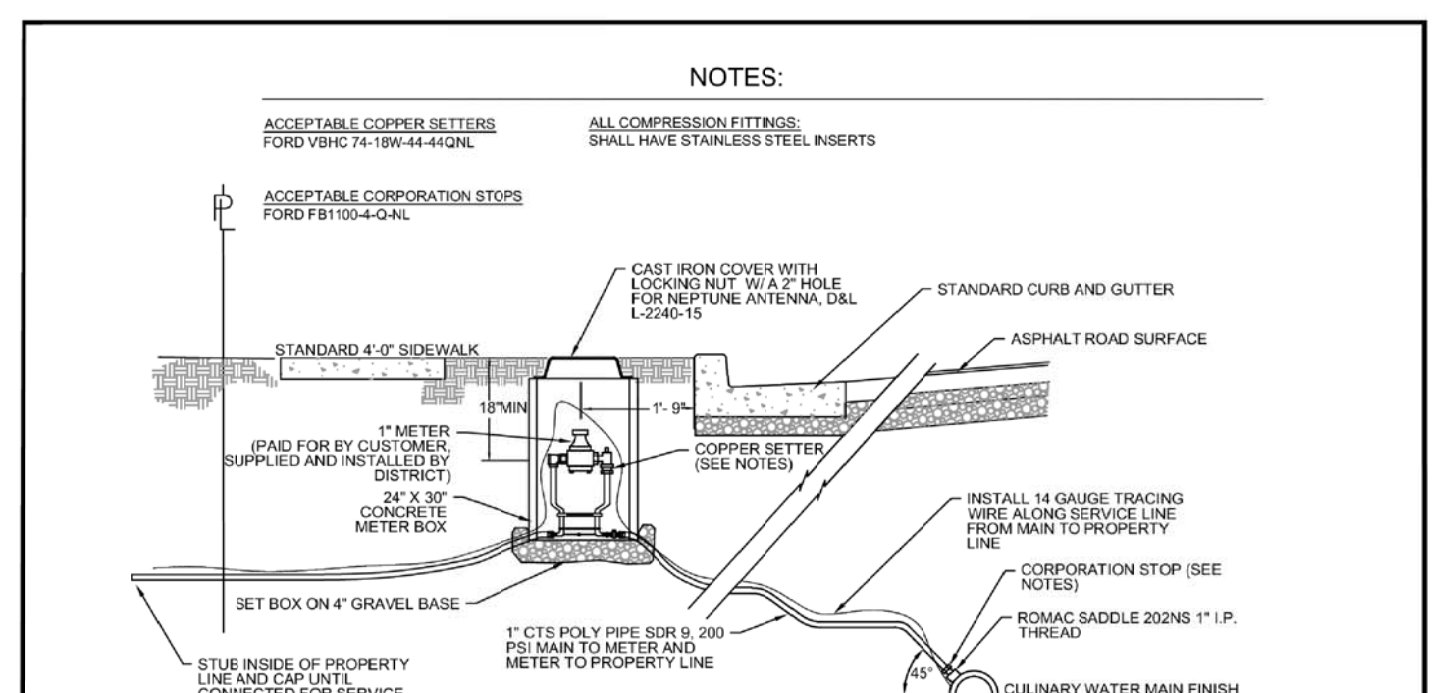
STANDARD WATER DETAILS
TAYLOR WEST WEBER
WATER IMPROVEMENT DISTRICT
TYPICAL WATER CONNECTION DETAIL
FIRE HYDRANT DETAIL
SHEET 3



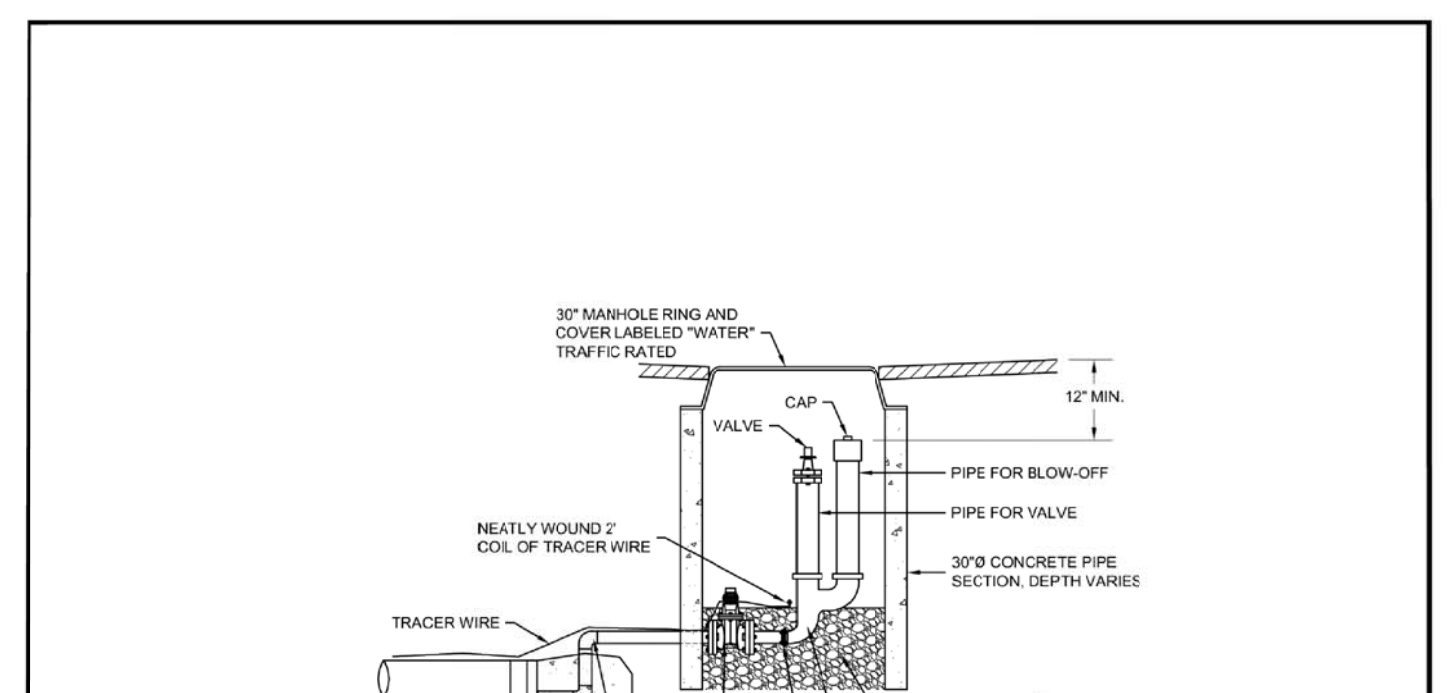
STANDARD WATER DETAILS
TAYLOR WEST WEBER
WATER IMPROVEMENT DISTRICT
TYPICAL WATER CONNECTION DETAIL
FIRE HYDRANT DETAIL
SHEET 3



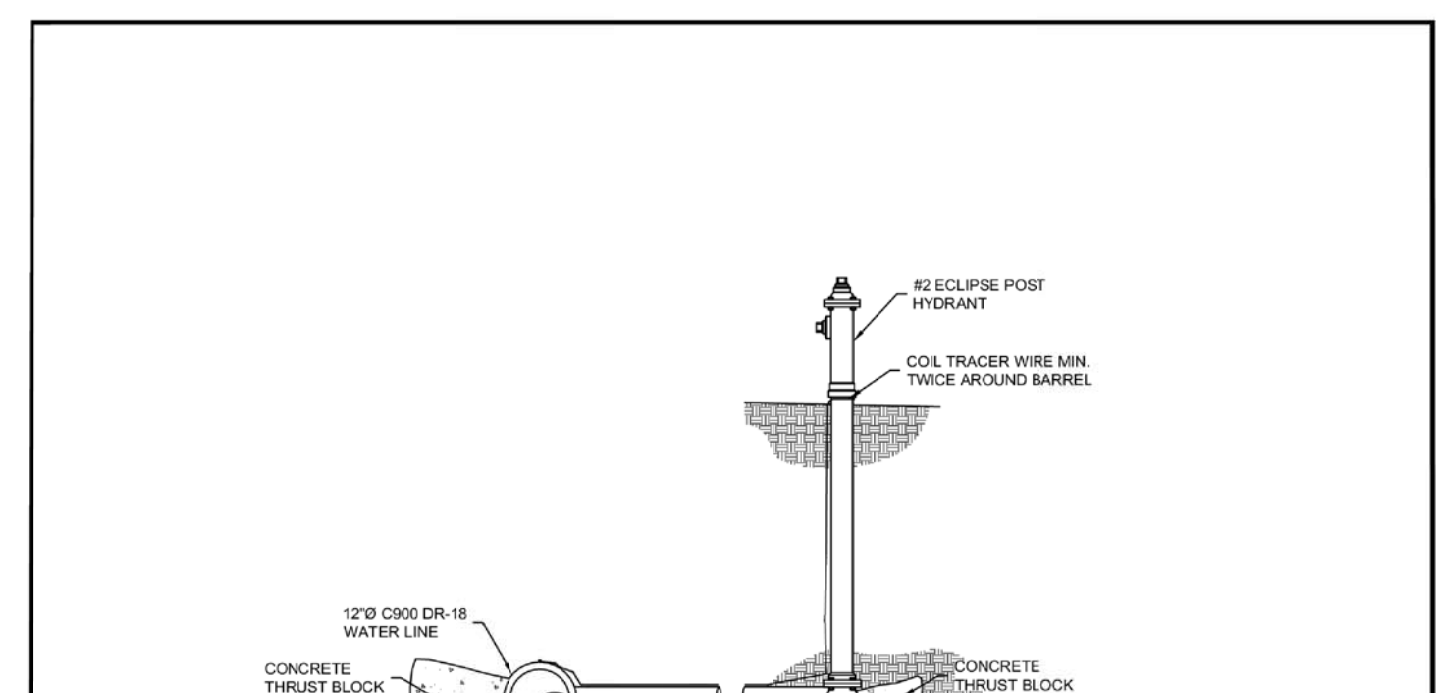
STANDARD WATER DETAILS
TAYLOR WEST WEBER
WATER IMPROVEMENT DISTRICT
TYPICAL SERVICE CONNECTION DETAIL
SHEET 4



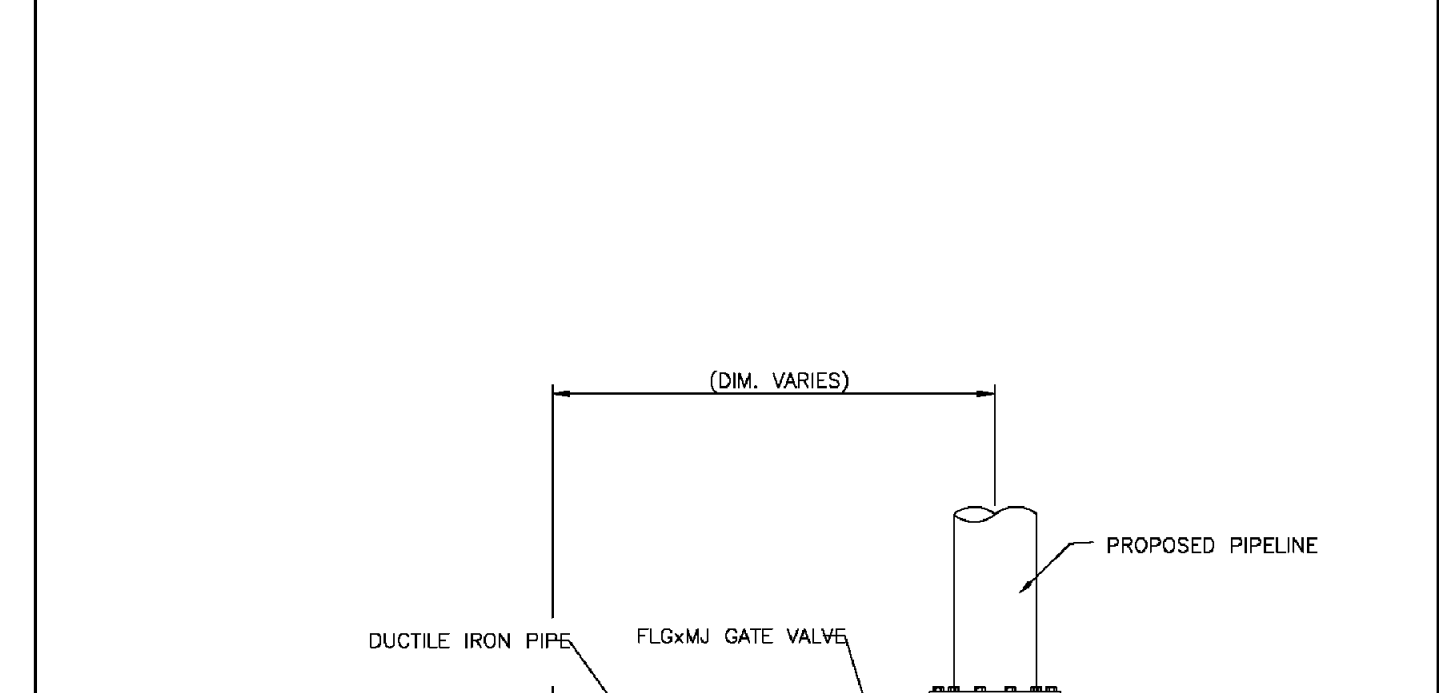
STANDARD WATER DETAILS
TAYLOR WEST WEBER
WATER IMPROVEMENT DISTRICT
1\"/>



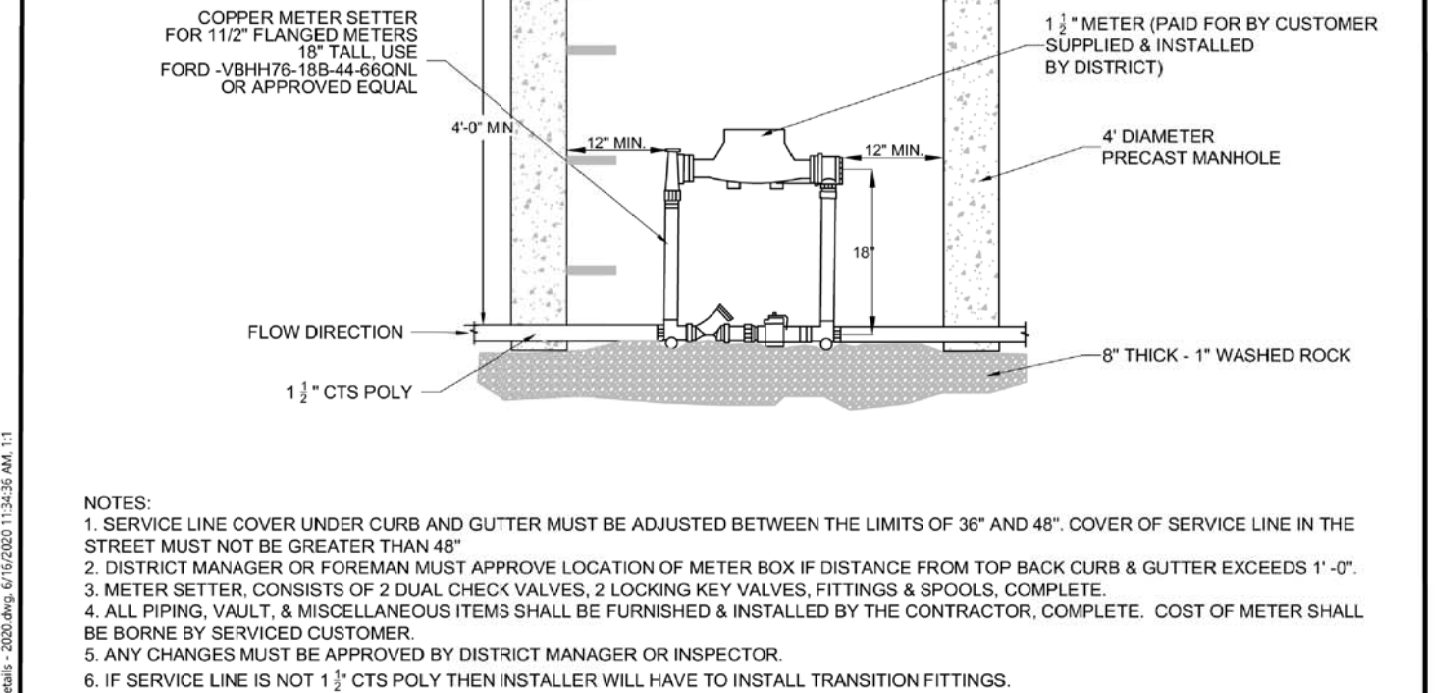
STANDARD WATER DETAILS
TAYLOR WEST WEBER
WATER IMPROVEMENT DISTRICT
BLOW OFF DETAIL
SHEET 1B



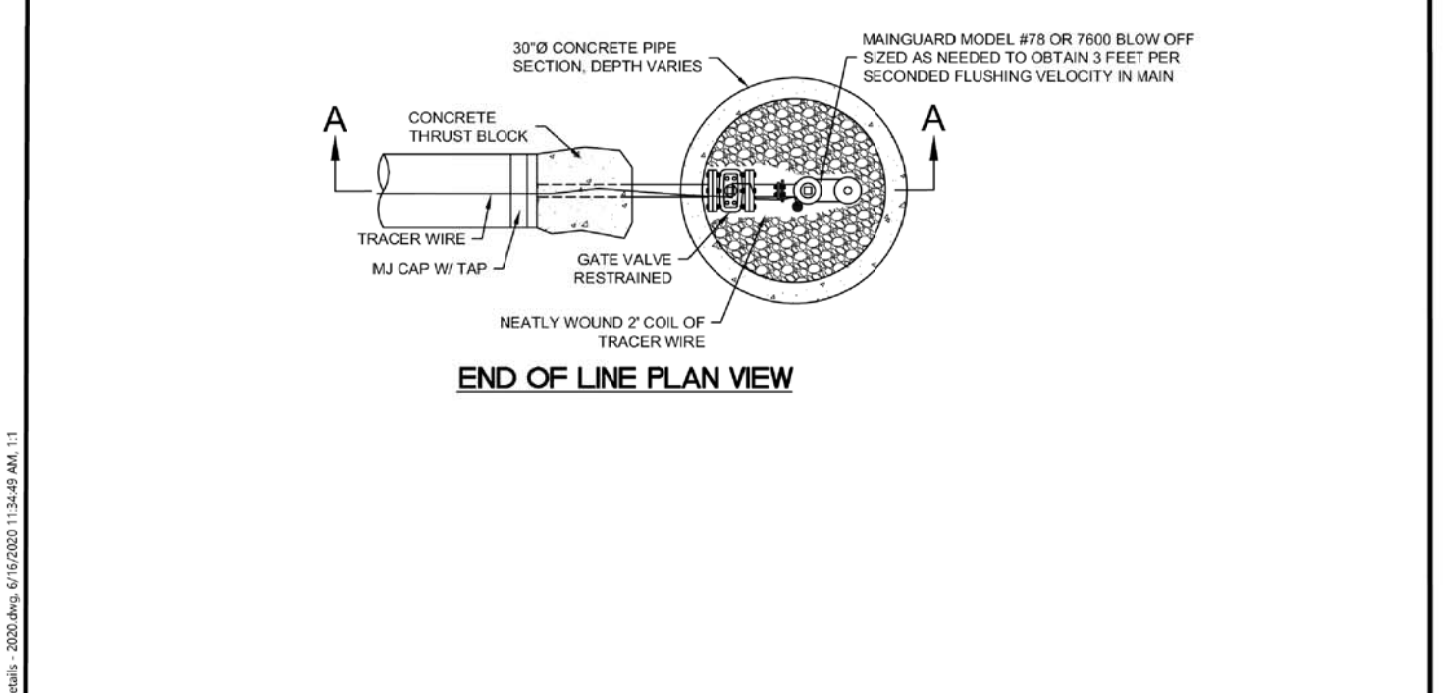
STANDARD WATER DETAILS
TAYLOR WEST WEBER
WATER IMPROVEMENT DISTRICT
BLOW OFF DETAIL
SHEET 1A



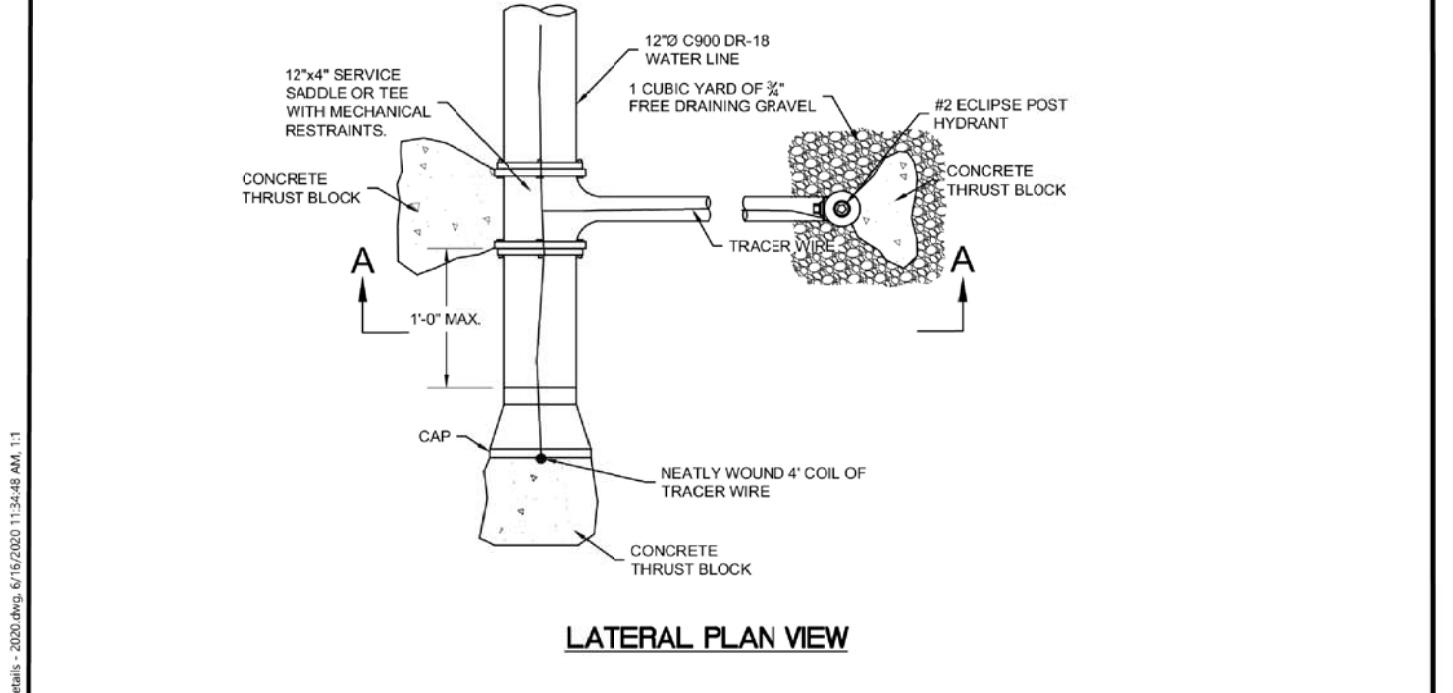
STANDARD WATER DETAILS
TAYLOR WEST WEBER
WATER IMPROVEMENT DISTRICT
LOCAL/SYSTEM DRAIN DETAIL
SHEET 1C



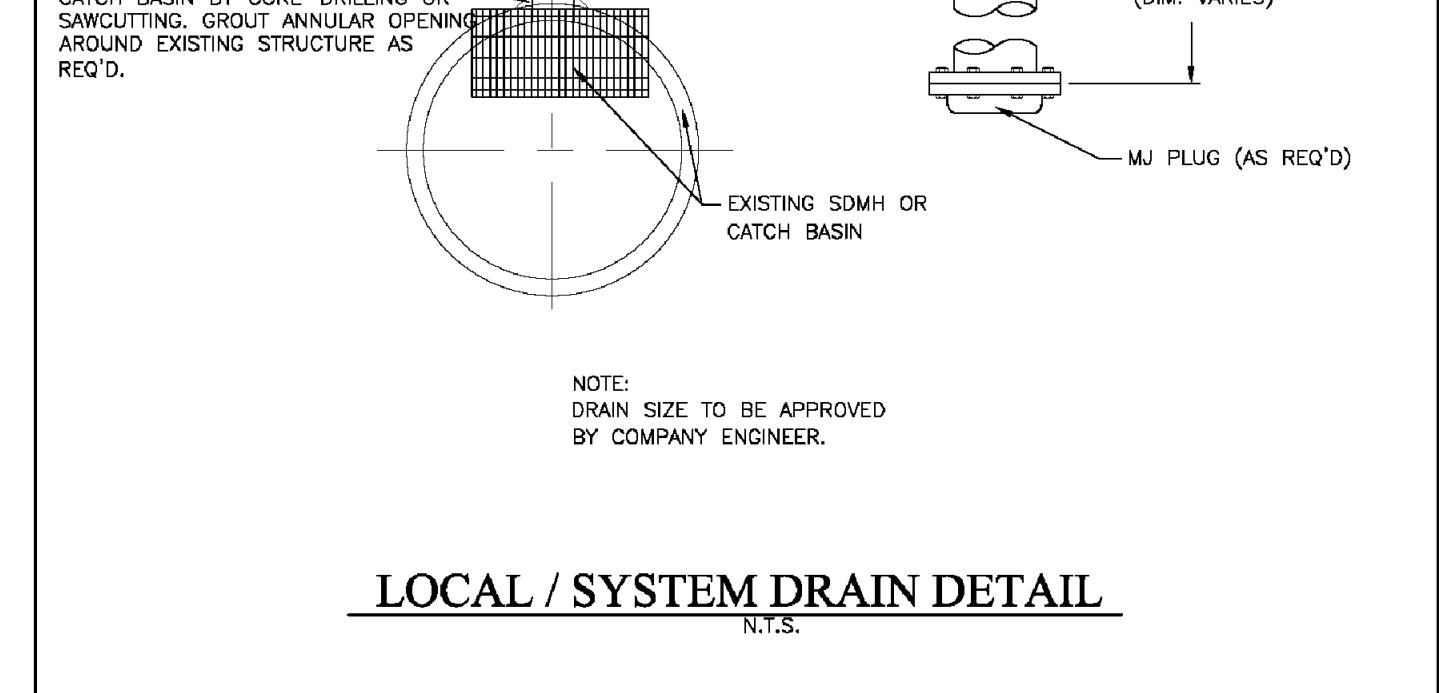
STANDARD WATER DETAILS
TAYLOR WEST WEBER
WATER IMPROVEMENT DISTRICT
1 1/2\"/>



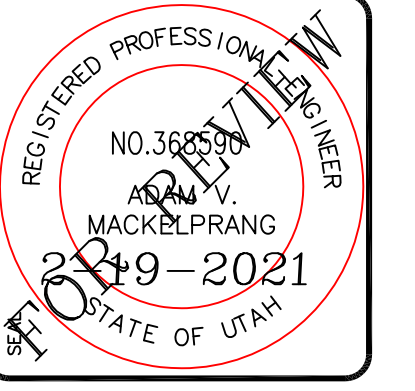
STANDARD WATER DETAILS
TAYLOR WEST WEBER
WATER IMPROVEMENT DISTRICT
BLOW OFF DETAIL
SHEET 1B



STANDARD WATER DETAILS
TAYLOR WEST WEBER
WATER IMPROVEMENT DISTRICT
BLOW OFF DETAIL
SHEET 1A



STANDARD WATER DETAILS
TAYLOR WEST WEBER
WATER IMPROVEMENT DISTRICT
LOCAL/SYSTEM DRAIN DETAIL
SHEET 1C



ALLIANCE CONSULTING ENGINEERS
150 EAST 200 NORTH SUITE P
LOGAN, UTAH 84321
(435)755-5121
alliance@alliance.com

CONFIDENTIALITY AND COPYRIGHT NOTICE
UNAUTHORIZED USE, DISCLOSURE, OR COPYING OF THIS DRAWING IS PROHIBITED.
CONSTRUCTION DOCUMENTS THAT ARE DISTRIBUTED FOR BIDDING PURPOSES SHALL NOT BE RETURNED AND SHALL BE DESTROYED WITHIN 30 DAYS AFTER THE BID OPENING BY THE PLAN HOLDER.

REVISIONS

NO.	REVISIONS / SUBMISSIONS	DATE

PROJECT TITLE: TAYLOR LANDING PHASE 1 A CLUSTER SUBDIVISION

DATE: NOV 2020

DRAWING NO.: 8

PROJECT NO.:

DRAWN BY:

REVIEWED BY:

CAD FILE:

TAYLOR LANDING PHASE 1 A CLUSTER SUBDIVISION

DETAILS

PROJECT TITLE: TAYLOR LANDING PHASE 1 A CLUSTER SUBDIVISION

DATE: NOV 2020

DRAWING NO.: 8

Hooper Irrigation Company Pressure Irrigation Standards

PI-4
LOCAL/SYSTEM DRAIN DETAIL