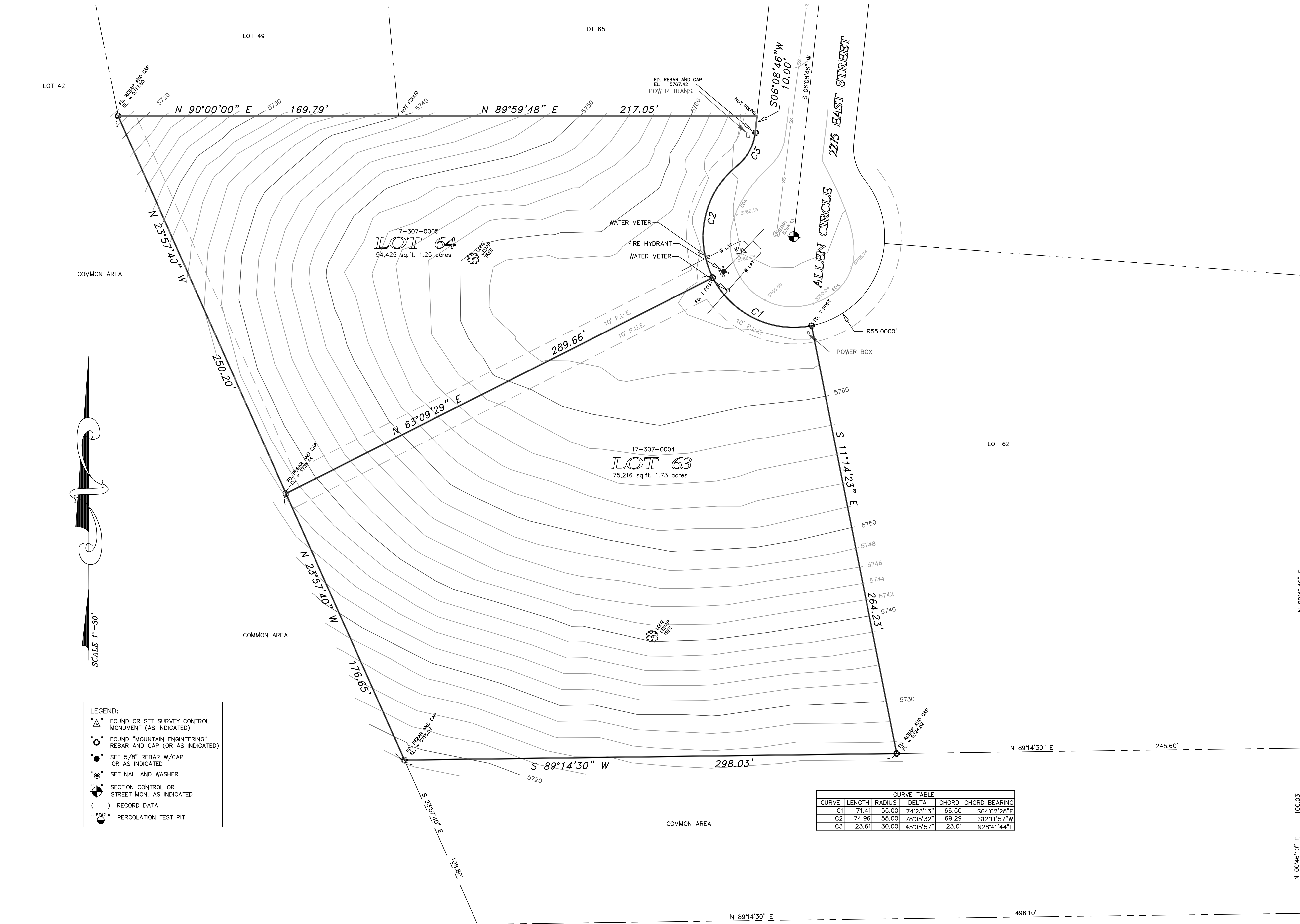


# TOPOGRAPHIC SURVEY - LOT 63 AND 64 DURFEE CREEK ESTATES NO. 2C LIBERTY, UTAH

A PART OF THE EAST HALF OF SECTION 36  
TOWNSHIP 8 NORTH, RANGE 1 WEST  
SALT LAKE BASE AND MERIDIAN,  
U. S. SURVEY, WEBER COUNTY, UTAH



- LEGEND:
- ▲ FOUND OR SET SURVEY CONTROL MONUMENT (AS INDICATED)
  - FOUND "MOUNTAIN ENGINEERING" REBAR AND CAP (OR AS INDICATED)
  - SET 5/8" REBAR W/CAP OR AS INDICATED
  - SET NAIL AND WASHER
  - ⊙ SECTION CONTROL OR STREET MON. AS INDICATED
  - ( ) RECORD DATA
  - ⊙ PERCOLATION TEST PIT

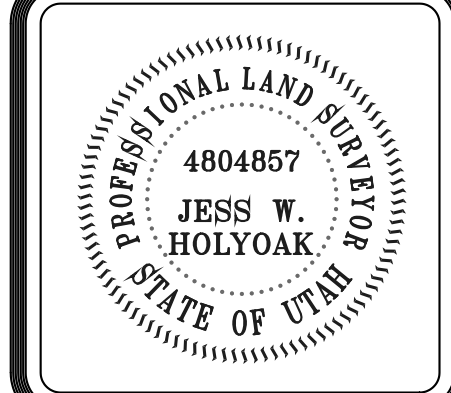
CURVE TABLE					
CURVE	LENGTH	RADIUS	DELTA	CHORD	CHORD BEARING
C1	71.41	55.00	74°23'13"	66.50	S64°02'25"E
C2	74.96	55.00	78°05'32"	69.29	S12°11'57"W
C3	23.61	30.00	45°05'57"	23.01	N28°41'44"E

C:\Land Projects\liberty\_habitations\dwg\durfee\_lot63\_64.dwg 9/24/2020 2:32:03 PM PM MDT

NARRATIVE:  
1. ALL UTILITY LOCATIONS SHOWN HEREON HAVE BEEN COMPILED FROM RECORD INFORMATION OR FACILITIES VISIBLE ON THE SURFACE. ALWAYS BLUE STAKE PRIOR TO CONSTRUCTION ACTIVITIES AND VERIFY UTILITY SERVICE LINE SIZE AND TYPE WITH EACH RESPECTIVE UTILITY COMPANY.

**MOUNTAIN ENGINEERING**  
2250 W OLD HIGHWAY ROAD  
MORGAN, UTAH 84050  
TEL (801) 876-3978  
mountainengineering@msn.com

DATE	BY	REVISIONS	COMMENTS



DESIGNED BY:  
J.W.H.  
DRAWN BY:  
W.L.H.  
DATE:  
SEPTEMBER, 2020

**TOPOGRAPHIC SURVEY**  
LOT 63 AND 64 DURFEE CREEK ESTATES NO. 2C  
A PART OF THE EAST HALF OF SECTION 36  
TOWNSHIP 8 NORTH, RANGE 1 WEST  
SALT LAKE BASE AND MERIDIAN, U.S. SURVEY  
LIBERTY, WEBER COUNTY, UTAH  
FOR: HABITATIONS HOME PLANS, 1523 E. SKYLINE DR., OGDEN, UTAH 84405

DRAWING NO.  
ME 20-62  
SHEET 1 OF 1  
FILE: durfee\_lot63