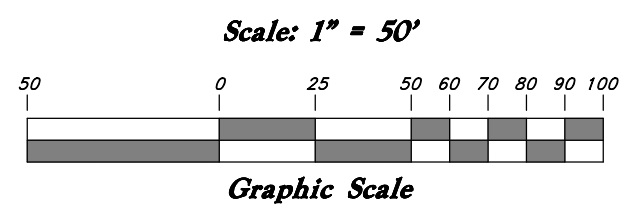
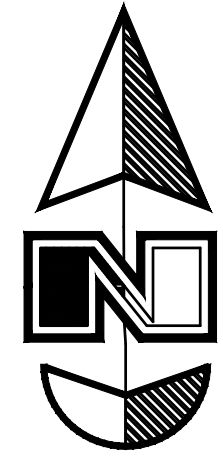


Weber Industrial Park Plat "A" 2nd Amendment

All of Lots 1 & 2, Weber Industrial Park Plat "A" Lot 8 Amended, being a part of the North 1/2 of Section 36, T7N, R2W, SLB&M, U.S. Survey
 Weber County, Utah
 January 2021



- Legend**
- Found Monument
 - (Rad.) Radial Line
 - (N/R) Non-Radial Line
 - PUE Public Utility Easement
 - PU&DE Public Utility & Drainage Easement
 - Fence
 - Easement
 - Existing Boundary
 - Property Boundary
 - Lot Line
 - Set Hub & Tack
 - A will be set Nail in Curb
 - ⊙ Extension of Property
 - Set 5/8" x 24" Long Rebar & Cap w/ Lathe

Deeds will be required



SURVEYOR'S CERTIFICATE
 I, Andy Hubbard, do hereby certify that I am a Professional Land Surveyor in the State of Utah, and that I hold License No. 6242920 in accordance with Title 58, Chapter 22, of the Professional Engineers and Land Surveyors Licensing Act. I also certify that I have completed a survey of the property described herein in accordance with Section 17-23-17 and that I have verified all measurements shown hereon this plat of Weber Industrial Park Plat "A" 2nd Amendment in Weber County, Utah and that it has been correctly drawn to the designated scale and is a true and correct representation of the following description of lands included in said subdivision, based on data compiled from records in the Weber County Recorder's Office. Monuments have been found or placed as represented on this plat. I furthermore certify that all lots within this Subdivision hereby meet all current lot width and area requirements of the Weber County Zoning Ordinance.

Signed this _____ day of _____, 2021.
 6242920 License No. Andy Hubbard

OWNER'S DEDICATION
 I the undersigned owner of the herein described tract of land, do hereby set apart and subdivide the same into lots and streets (Private Streets, Private Rights of Way) as shown hereon and name said tract Weber Industrial Park Plat "A" 2nd Amendment, and do hereby: dedicate to public use all those parts or portions of said tract of land designated as streets, the same to be used as public thoroughfares forever and also grant and dedicate a perpetual right and easement over, upon and under the lands designated hereon as public utility, storm water detention ponds, drainage easements and canal maintenance easements, the same to be used for the installation, maintenance and operation of public utility service lines, storm drainage facilities, irrigation canals or for the perpetual preservation of water drainage channels in their natural state whichever is applicable as may be authorized by the governing authority, with no buildings or structures being erected within such easements.

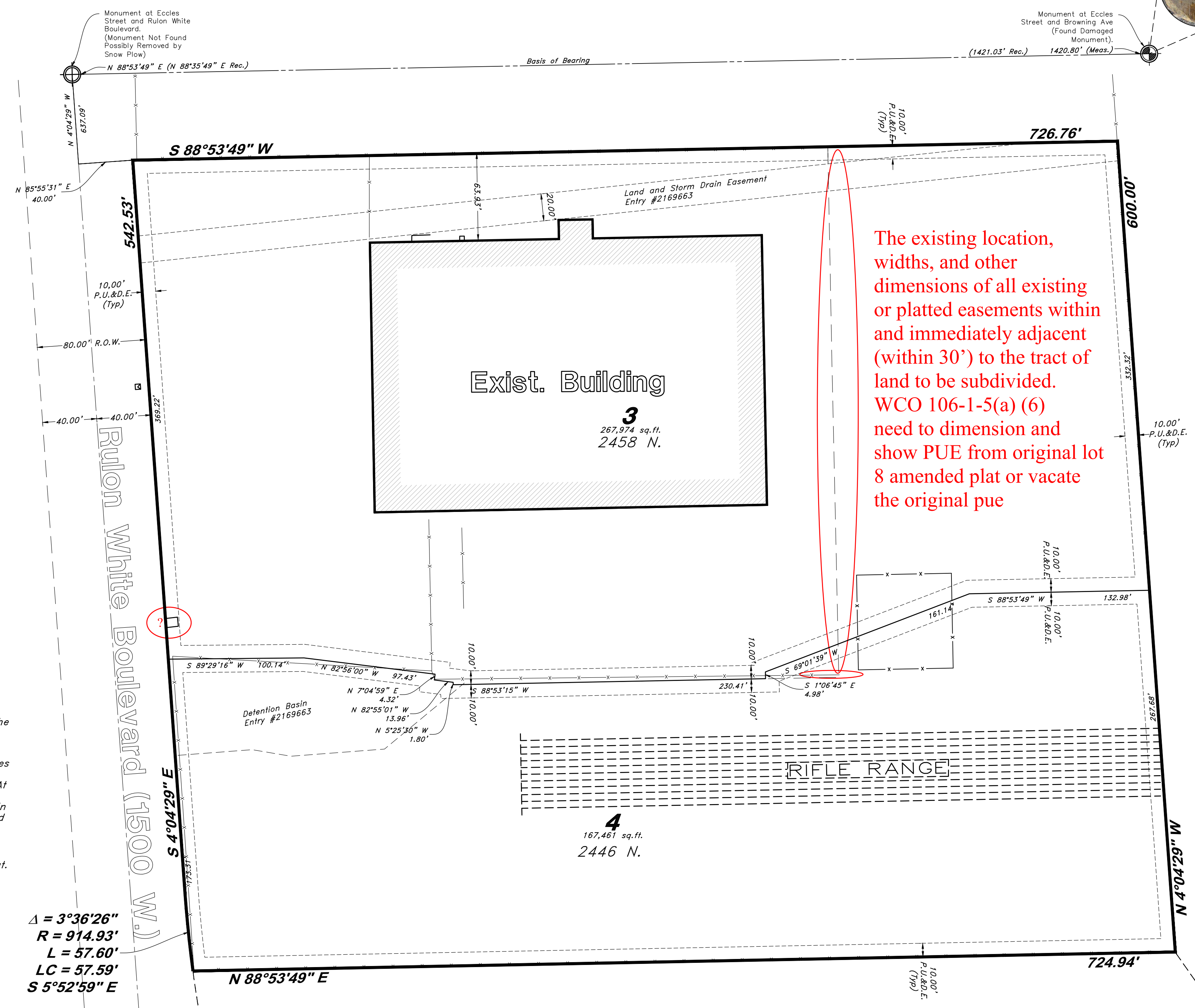
Signed this _____ day of _____, 2021.

Fourstar Investments LLC Weber County, a Body Politic Corporate and Political Subdivision of the State of Utah

ACKNOWLEDGMENTS

State of Utah } ss
 County of _____ }
 The foregoing instrument was acknowledged before me this _____ day of _____ 2021 by _____
 Residing At: _____ A Notary Public commissioned in Utah
 Commission Number: _____ Print Name
 Commission Expires: _____

State of Utah } ss
 County of Weber }
 The foregoing instrument was acknowledged before me this _____ day of _____ 2021 by _____
 Residing At: _____ A Notary Public commissioned in Utah
 Commission Number: _____ Print Name
 Commission Expires: _____



The existing location, widths, and other dimensions of all existing or platted easements within and immediately adjacent (within 30') to the tract of land to be subdivided. WCO 106-1-5(a) (6) need to dimension and show PUE from original lot 8 amended plat or vacate the original pue

NARRATIVE
 This Subdivision Plat was requested by Kraig Urry for the purpose of Amending this Plat and Adjusting the common Line between the lots.
 A Line bearing North 88°53'49" East (N 88°53'49" E Record) between Monuments at the Intersection of Eccles Street & Rulon White Boulevard and Eccles Street & Browning Avenue was used as the Basis of Bearings. At the time of survey it was found that the monument to Eccles & Rulon White Boulevard had been obliterated. In 2006 the monuments were shot for another survey and were held as true for this survey.
 Property Lines were established per the record.
 Property Corners were monument as shown on this plat.

NOTES
 1. Notice to purchasers of lots designated with buildable access has been approved subject to the conditions that the building development shall take place only within such designated areas.

WEBER COUNTY ACCEPTANCE
 This is to certify that this subdivision plat, the dedication of streets and other public ways and financial guarantee of public improvement associated with this subdivision, thereon area hereby approved and accepted by the Commissioners of Weber County, Utah this day of _____, 2021.
 Chairman, Weber County Commission
 Attest:
 Title: _____

WEBER COUNTY SURVEYOR
 I hereby certify that the Weber County Surveyor's Office has reviewed this plat and all conditions for approval by this office has been satisfied. The approval for this plat by the Weber County Surveyor does not relieve the Licensed Land Surveyor who executed this plat from the responsibilities and/or liabilities associated therewith.
 Signed this _____ day of _____, 2021.
 Weber County Surveyor

WEBER COUNTY PLANNING COMMISSION APPROVAL
 This is to certify that this subdivision plat was duly approved by the Weber County Planning Commission.
 Signed this _____ day of _____, 2021.
 Chairman, Weber County Planning Commission

WEBER COUNTY ENGINEER
 I hereby certify that the required public improvement standards and drawings for this subdivision conform with County standards and the amount of the financial guarantee is sufficient for the installation of these improvements.
 Signed this _____ day of _____, 2021.
 Weber County Engineer

WEBER COUNTY ATTORNEY
 I have examined the financial guarantee and other documents associated with this subdivision plat, and in my opinion they conform with the County Ordinance applicable thereto and now in force and effect.
 Signed this _____ day of _____, 2021.
 Weber County Attorney

DESCRIPTION
 All of Lots 1 & 2, Weber Industrial Park Plat "A" Lot 8 Amended, (Weber County Recorder Entry #2169663 in Book 63 page 45) being in the Northeast Quarter of Section 36, Township 7 North, Range 2 West Salt Lake Base and Meridian more particularly described as follows:
 Beginning at the Northwest corner of Lot 1, Weber Industrial Park Plat "A" Lot 8 Amended, said point being 637.09 feet South 4°04'29" East and 40.00 feet North 85°55'31" East from the Monument at Eccles Street and Rulon White Boulevard and running thence North 88°53'49" East 726.76 feet; thence South 04°04'29" East 600.00 feet; thence South 88°53'49" West 724.94 feet to the point of curve of a non tangent curve, of which the radius point lies North 82°18'47" East; thence Northerly along the arc of a 914.93 feet radius curve to the right a distance of 57.60 feet (Central Angle equals 03°36'26" and Long Chord bears North 05°52'59" West 57.59 feet); thence North 04°04'29" West 542.53 feet to the POINT OF BEGINNING.
 Containing 9.9962 acres, more or less.

Sheet 1 of 1

WEBER COUNTY RECORDER	
ENTRY NO. _____	FEE PAID _____
RECORDED _____	FILED FOR RECORD AND AT _____
IN BOOK _____	OF OFFICIAL RECORDS, PAGE _____
RECORDED FOR _____	
WEBER COUNTY RECORDER	
BY: _____	DEPUTY