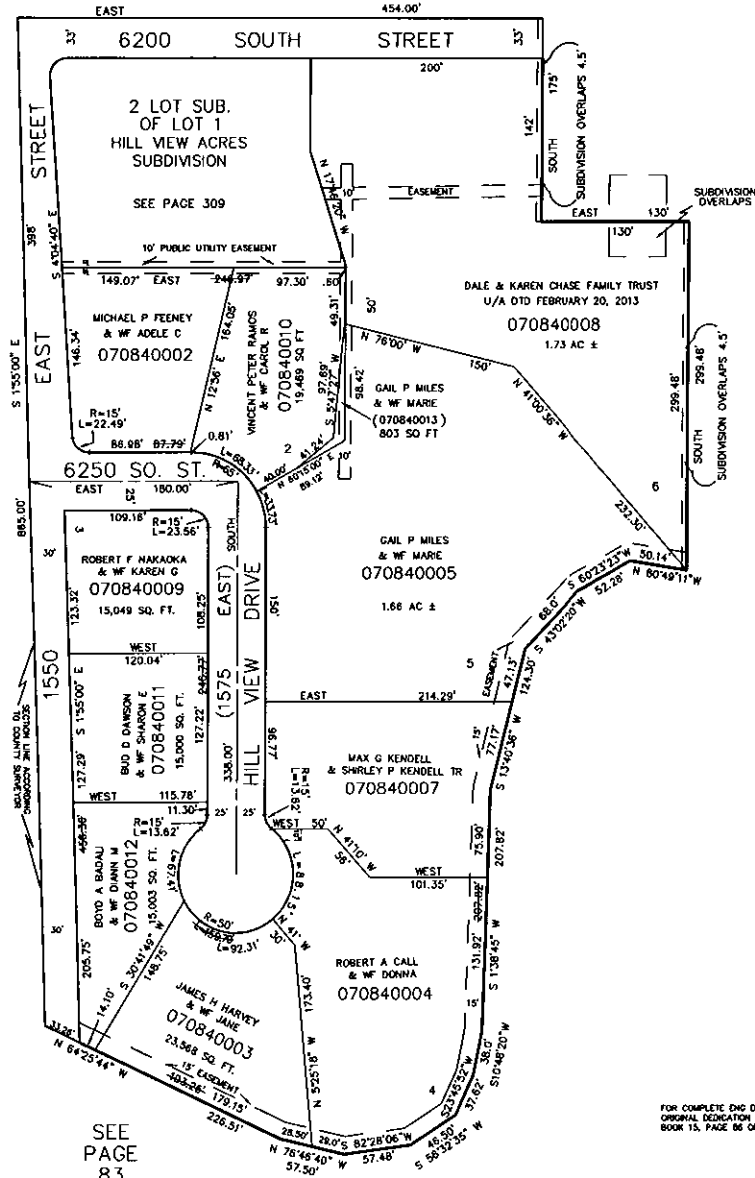


PART OF S.E. 1/4, SEC. 22, T.5N., R.1W., S.L.B & M.
HILL VIEW ACRES SUBDIVISION

TAXING UNIT: 54

IN WEBER COUNTY
 SCALE 1" = 80'

SEE PAGE 83



SEE PAGE 81

SEE PAGE 83

SEE PAGE 83

HILL VIEW ACRES SUBDIVISION

IN WEBER COUNTY, UTAH
BEING A SUBDIVISION OF A PORTION OF THE S.E. 1/4 OF SEC. 22, T3N, R1W,
S.L.R.B.M.

WEBER COUNTY PLANNING COMMISSIONS CERTIFICATE

The Weber County Planning Commission hereby certifies that the foregoing plan and definition of HILL VIEW ACRES SUBDIVISION were approved by said Commission on the 22nd day of July, 1968.

Chairman
CHAIRMAN

COUNTY COMMISSION APPROVAL & ACCEPTANCE

This is to certify that this plan and definition of HILL VIEW ACRES SUBDIVISION in Weber County were duly approved and accepted by the County Commissioners of Weber County, Utah on the 15th day of July, 1968.

Chairman
CHAIRMAN

BOUNDARY DESCRIPTION

A portion of the S.E. 1/4 of Section 22, T3N, R1W, SLP
Lake Base & Meridian described as follows:
Commencing at a point South 132728 feet from the northeast
corner of said upper section; thence East, 4540 feet, thence
South, 1720 feet; thence East, 500 feet; thence South, 238.48
feet; thence N 80°-45'17" W, 50.14 feet; thence S 67°-32'31" W,
52.28 feet; thence S 47°-02'10" W, 68.0 feet; thence S 74°-00'00" W,
144.30 feet; thence S 71°-29'43" W, 207.28 feet; thence S 70°-40'00" W,
38.0 feet; thence S 23°-45'15" W, 37.68 feet; thence S 67°-32'31" W,
46.50 feet; thence S 67°-32'31" W, 57.48 feet; thence N 71°-16'-40" W,
57.50 feet; thence N 64°-25'44" W, 228.5 feet; thence
N 1°-55'00" W, 853.0 feet to point of beginning.

OWNERS DEDICATION

The under signed owners of the foregoing described tract of land do hereby set apart and dedicate the same into
high, streets and utility easements as shown on the above and foregoing plat thereof, which is hereby made a part
hereof, and assign to the lands included in said plat the name of, HILL VIEW ACRES. The undersigned
owners further hereby dedicate, grant and convey to Weber County of those parts or portions of said tract of land
designated on said plat as streets, the same to be used as public thoroughfare forever and grant and dedicate a
perpetual right of way and easement over and under the land designated on the plat as public utility easements, the same
to be used for the installation and of public utility service lines as may be authorized by WEBER COUNTY.

- AND WIFE John G. Reitze
- AND WIFE Charles B. Anderson
- AND WIFE Paul Zimmerman
- AND WIFE Blair S. Henson
- AND WIFE Robert A. Call
- AND WIFE James J. Johnson
- AND WIFE Paul Zimmerman
- AND WIFE Blair S. Henson
- AND WIFE James J. Johnson
- AND WIFE Paul Zimmerman

STATE OF UTAH
COUNTY OF WEBER
WHEELWRIGHT CONST. CO.
PRESIDENT
SECRETARY

On this 25th day of July, 1967, Personally appeared before me the undersigned, **WHEELWRIGHT CONST. CO.**, in and for said county of Weber in said state of Utah the signers of the foregoing plat and definition of HILL VIEW ACRES SUBDIVISION, who duly acknowledged to me that they signed the foregoing plat and definition of HILL VIEW ACRES SUBDIVISION for the uses and purposes therein mentioned, and for the uses and purposes therein mentioned, and for the uses and purposes therein mentioned, and for the uses and purposes therein mentioned.

ENGINEERS CERTIFICATION

I, JOHN G. REITZE, a registered professional engineer, and lead surveyor in the State of Utah, do hereby certify that the foregoing plat of HILL VIEW ACRES SUBDIVISION in Weber County, Utah has been correctly drawn to the designated scale and is true and correct representation of the foregoing description of lands included in said subdivision, based on data compiled from records of the Weber County Recorder's Office and of a survey made on the production of the original plat of HILL VIEW ACRES SUBDIVISION.

JOHN G. REITZE
State License No. 1252
DATE: July 25, 1968

COUNTY SURVEYORS CERTIFICATE OF APPROVAL

I, hereby certify that, I have carefully investigated the lines of survey of the foregoing plat and legal description of the land embraced therein, and found them to be correct and to agree with the data and monument on record in this office and hereby approve said plat on the 22nd day of July, 1968.

David E. Johnson
County Surveyor

COUNTY ATTORNEYS CERTIFICATE OF APPROVAL

I, have examined the proposed plat of HILL VIEW ACRES SUBDIVISION and in my opinion it conforms with the County Ordinance applicable thereto and now in force and effect.

David E. Johnson
County Attorney

502047
FILED AND RECORDED IN
B. S. HERRICK
1968 MAR 19 PM 4 11
RUTH EMMES OLSEN
WEBER COUNTY RECORDER

