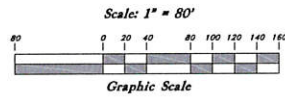


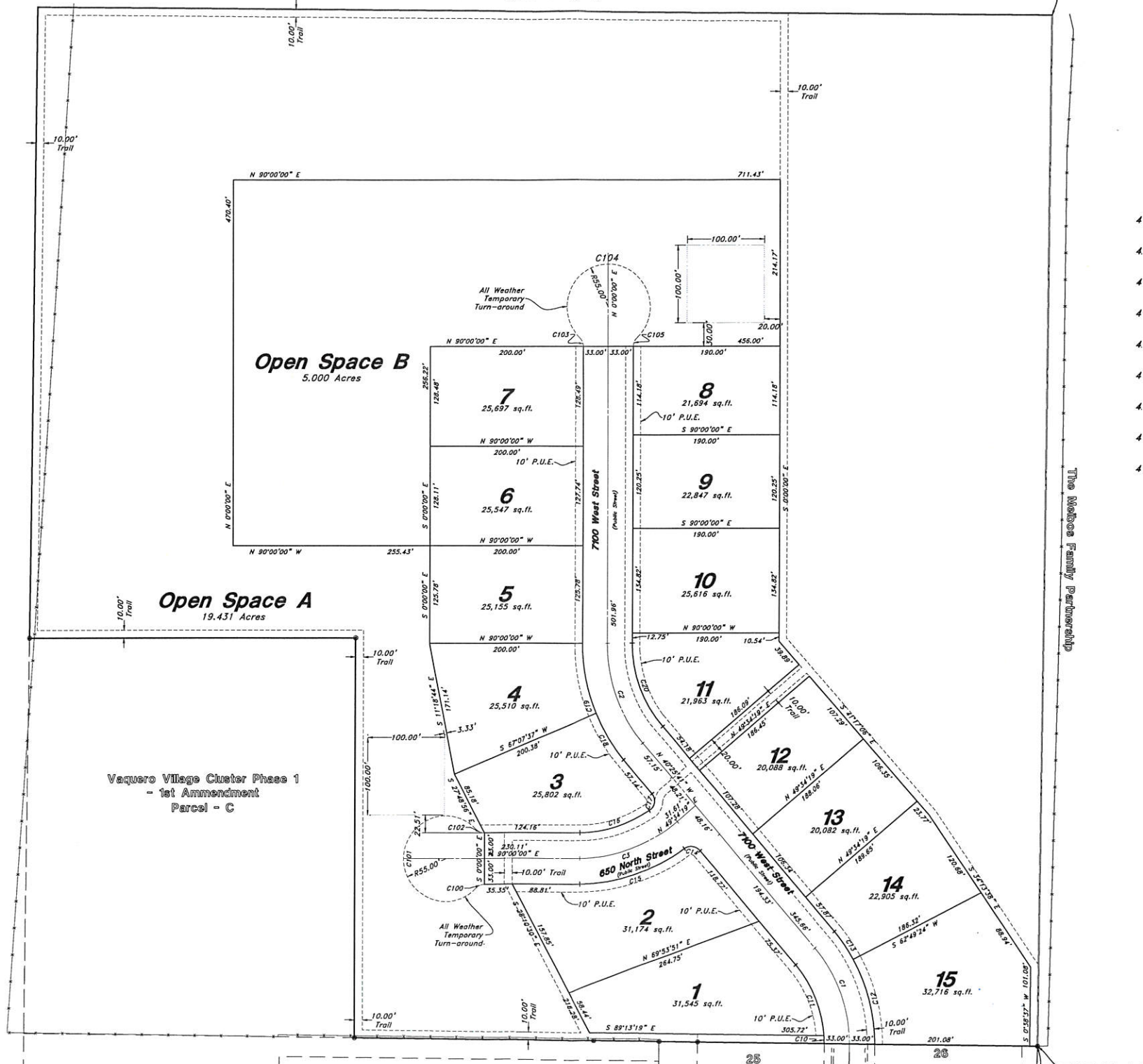
Vaquero Village Cluster Subdivision Phase 2

A part of the Southwest Quarter of Section 14, T6N, R3W, SLB&M, U.S. Survey
Weber County, Utah
September 2020



North Quarter Corner of Section 14,
T6N, R3W, SLB&M, U.S. Survey
(No Record Monument)

Warren Irrigation Company



The Meadows Family Partnership

Legend

- ⊕ Monument to be set
- ⊕ Found Centerline Monument
- (Rad.) Radial Line
- (N/R) Non-Radial Line
- PUE Public Utility Easement
- PU&DE Public Utility & Drainage Easement
- Fence
- Buildable Area
- Pathway
- Easement
- Buildable area
- Existing Boundary
- Set Hub & Tack
- ▲ A will be set Nail in Curb
- Extension of Property
- ▲ Set 5/8" x 24" Long Rebar & Cap w/ Lathe

Centerline Curve Data

Curve #	Delta	Radius	Length	Chord Direction	Chord Length
C1	41°10'09"	189.85'	136.41'	N 19°50'36" W	133.50'
C2	40°25'41"	198.37'	139.97'	N 20°12'51" W	137.08'
C3	40°25'41"	196.07'	138.35'	N 69°47'09" E	135.50'

Curve Data

Curve #	Delta	Radius	Length	Chord Direction	Chord Length
C10	3°40'34"	156.08'	10.01'	N 2°03'36" W	10.01'
C11	35°53'40"	156.08'	97.78'	N 21°50'43" W	96.19'
C12	28°48'29"	226.09'	113.68'	N 14°42'30" W	112.48'
C13	11°00'51"	226.09'	43.46'	N 34°37'10" W	43.39'
C14	85°52'04"	15.36'	23.03'	N 81°57'59" W	20.93'
C15	36°36'20"	229.07'	146.35'	N 71°41'50" E	143.87'
C16	34°05'16"	163.07'	97.02'	S 72°57'22" W	95.59'
C17	96°40'06"	14.64'	24.69'	N 9°01'29" E	21.87'
C18	17°33'18"	231.37'	70.89'	N 31°39'02" W	70.61'
C19	22°52'23"	231.37'	92.37'	N 11°26'12" W	91.75'
C20	40°25'41"	165.37'	116.69'	N 20°12'51" W	114.28'

Easement Curve Data

Curve #	Delta	Radius	Length	Chord Direction	Chord Length
C100	46°14'52"	15.00'	12.11'	S 66°12'52" W	11.78'
C101	273°25'04"	55.00'	262.46'	N 0°12'02" E	75.43'
C102	47°07'38"	15.00'	12.34'	S 67°03'19" E	11.99'
C103	46°14'52"	15.00'	12.11'	N 23°47'06" W	11.78'
C104	273°25'04"	55.00'	262.46'	N 89°48'00" E	75.43'
C105	47°07'38"	15.00'	12.34'	S 22°56'43" W	11.99'

Southwest Corner of Section 14,
T6N, R3W, SLB&M, U.S. Survey
(Found 3" Weber County Brass Cap
Monument in Good Condition 7" below
road surface)

S 89°13'19" E Meas. & Rec. (Basis of Bearings)

Erving J. & Velasquez B. Davis Revocable Trust

2634.24' Meas. (2643.25' Rec.)

South Quarter Corner of Section 14,
T6N, R3W, SLB&M, U.S. Survey
(Found 3" Weber County Brass Cap Monument
in Poor Condition 6" below road surface)
Point of Beginning

Sheet 2 of 2

WEBER COUNTY RECORDER

ENTRY NO. _____ FEE PAID _____

RECORDED _____ FILED FOR RECORD AND _____ AT _____

IN BOOK _____ OF OFFICIAL RECORDS, PAGE _____, RECORDED FOR _____

WEBER COUNTY RECORDER

BY: _____

DEPUTY