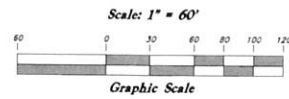


Stoker Subdivision Amendment

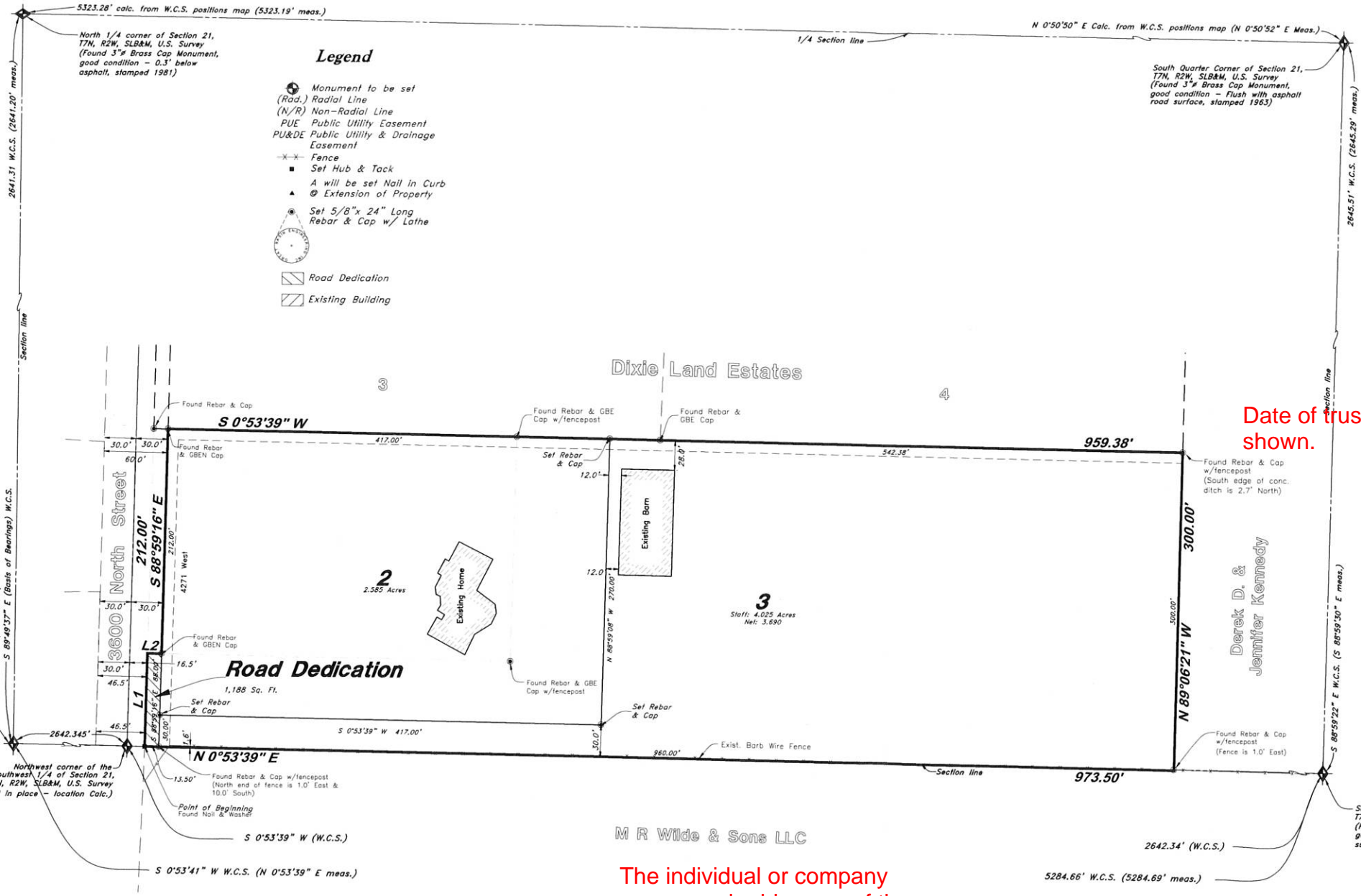
All of Lot 1, Stoker Subdivision, being
 A part of the Southwest 1/4 of Section 21, T7N, R2W, SLB&M, U.S. Survey
 Weber County, Utah
 January 2018

Needs to say 1st Amendment.



SURVEYOR'S CERTIFICATE
 I, Andy Hubbard, do hereby certify that I am a Professional Land Surveyor in the State of Utah, and that I hold Certificate No. 6242920 in accordance with Title 58, Chapter 22, of the Professional Engineers and Land Surveyors Licensing Act. I also certify that I have completed a survey of the property described herein in accordance with Sections 17-23-17 and that I have verified all measurements shown hereon this plat of ~~Stoker Subdivision Amendment~~ in Weber County, Utah and that it has been correctly drawn to the designated scale and is a true and correct representation of the following description of land included in said subdivision, based on data compiled from records in the Weber County Recorder's Office. Monuments have been found or placed as represented on this plat. I furthermore certify that all lots within this Subdivision hereby meet all current lot width and area requirements of the Weber County Zoning Ordinance.

Signed this _____ day of _____, 2018.
 6242920 License No. Andy Hubbard



- Legend**
- Monument to be set (Rad.) Radial Line (N/R) Non-Radial Line
 - PUE Public Utility Easement
 - PUE&DE Public Utility & Drainage Easement
 - Fence
 - Set Hub & Tack
 - A will be set Nail in Curb
 - Extension of Property
 - Set 5/8" x 24" Long Rebar & Cap w/ Lothe
 - Road Dedication
 - Existing Building

OWNER'S DEDICATION
 We the undersigned owners of the herein described tract of land, do hereby set apart and subdivide the same into lots and streets as shown hereon and name said tract ~~Stoker Subdivision Amendment~~ and do hereby dedicate, to public use all those parts or portions of said tract of land designated as streets, the same to be used as public thoroughfares, and also grant and dedicate a perpetual right and easement over, upon and under the lands designated hereon as public utility, storm water detention ponds, drainage easements and canal maintenance easement, the same to be used for the installation, maintenance and operation of public utility service lines, storm drainage facilities, irrigation canals, or for the perpetual preservation of water drainage channels in their natural state, whichever is applicable as may be authorized by the governing authority, with no buildings or structures being erected within such easements.

Signed this _____ day of _____, 2018.
 Kyle S. Stoker and w/f. JuLayne M. Stoker

ACKNOWLEDGMENT
 State of Utah } ss
 County of _____ }
 I, _____, on the _____ day of _____, 2018, personally appeared before me Kyle S. Stoker, who being by me duly sworn, that they are Owners of said parcel, and that said instrument was signed in behalf of said Owners by a resolution of its Owners and Kyle S. Stoker and Julayne M. Stoker, acknowledged to me that said Owners Trust executed the same.

Residing At: _____ A Notary Public commissioned in Utah
 Commission Expires: _____ Notary Name

DESCRIPTION
 All of Lot 1 Stoker Subdivision, Weber County Utah, according to the Official Plat thereof, being a part of the Southwest Quarter of Section 21, Township 7 North, Range 2 West, Salt Lake Base and Meridian, U.S. Survey, Weber County, Utah:
 Beginning at a point on the Southerly Right of Way Line of 3600 North Street, said point being 16.50 feet South 0°53'39" West (Weber County Survey) along the Section Line; and running thence along said Southerly and Westerly Right of Way Lines the following three (3) courses: (1) South 88°59'16" East 88.00 feet, (2) South 0°53'39" West 13.50 feet and (3) South 88°59'16" East 212.00 feet to the Westerly Line of Dixie Land Estates, Weber County, Utah; thence along said Westerly Line South 0°53'39" West 959.38 feet to the Northerly Line of the Derek D. & Jennifer Kennedy Property; thence along said Northerly Line North 89°06'21" West 300.00 feet to a point on an Existing Fence Line and the Easterly Line of the M R Wilde & Sons LLC Property; thence along said Fence Line and Easterly Line North 0°53'39" East 973.50 feet to the said Southerly Right of Way Line and the Point of Beginning.

Contains 6.637 Acres

NARRATIVE
 This Survey and Subdivision plat was requested by Ms. Julayne Stoker for the purpose of platting one residential lot.
 Brass Cap Monuments were found at the Northwest and Southwest corners, North and South 1/4 corners of Section 21, T7N, R2W. A line bearing South 89°49'13" East between the Northwest corner and the North 1/4 corner of Section 21 was used as the basis of bearings.
 The East Line was established along Dixie Land Estates Subdivision. The West Line was established along the Section Line. The North Line was established along the South Line of 3600 North Street.
 Property corners were monumented as depicted on drawing.

The individual or company names and addresses of the applicant of the subdivision.
 WCO 106-1-5(a)(3)

Line	Bearing	Length
L1	S 88°59'16" E	88.00
L2	S 0°53'39" W	13.50

WEBER COUNTY COMMISSION ACCEPTANCE
 This is to certify that this subdivision plat, the dedication of streets and other public ways and financial guarantee of public improvements associated with this subdivision, thereon are hereby approved and accepted by the commissioners of Weber County, Utah.
 Signed this _____ day of _____, 2018.

Chairman, Weber County Commission
 Attest:
 Title:

WEBER COUNTY ATTORNEY
 I have examined the financial guarantee and other documents associated with this subdivision plat, and in my opinion they conform with the County Ordinance applicable thereto and now in force and effect.
 Signed this _____ day of _____, 2018.

Weber County Attorney

WEBER-MORGAN HEALTH DEPARTMENT
 I hereby certify that the soils, percolation rates, and site conditions for this subdivision have been investigated by this office and are approved for on site wastewater disposal systems.
 Signed this _____ day of _____, 2018.

Director Weber-Morgan Health Department

WEBER COUNTY PLANNING COMMISSION APPROVAL
 This is to certify that this subdivision plat was duly approved by the Weber County Planning Commission.
 Signed this _____ day of _____, 2018.

Chairman, Weber County Planning Commission

WEBER COUNTY SURVEYOR
 I hereby certify that the Weber County Surveyor's Office has reviewed this plat for mathematical correctness, section corner data, and for harmony with lines and monument on record in County Offices. The approval of this plat by the Weber County Surveyor does not relieve the licensed Land Surveyor who executed this plat from the responsibilities and/or liabilities associated therewith.
 Signed this _____ day of _____, 2018.

Weber County Surveyor

WEBER COUNTY RECORDER

ENTRY NO. _____ FILED FOR RECORD AND RECORDED _____ IN BOOK _____ OF OFFICIAL RECORDS, PAGE _____, RECORDED FOR _____

WEBER COUNTY RECORDER
 BY: _____ DEPUTY

NOTE:
 10' Public Utility and Drainage Easement each side of property lines as indicated by dashed lines, unless otherwise shown.

AGRICULTURAL NOTE
 Agriculture is the preferred use in the agriculture zones. Agricultural operations as specified in the Land Use Code for a particular zone are permitted at any time including the operation of farm machinery and no allowed agricultural use shall be subject to restrictions on the basis that it interferes with activities of future residents of this subdivision.

WEBER COUNTY ENGINEER
 I hereby certify that the required public improvement standards and drawings for this subdivision conform with County standards and the amount of the financial guarantee is sufficient for the installation of these improvements.
 Signed this _____ day of _____, 2018.

Weber County Engineer

TAYLOR WEST WEBER WATER
 This is to certify that this subdivision plat was duly approved by Taylor West Weber Water.
 Signed this _____ day of _____, 2018.

Taylor West Weber Water

HOOPER WATER IMPROVEMENT DISTRICT
 This is to certify that this subdivision plat was duly approved by Hooper Water Improvement District.
 Signed this _____ day of _____, 2018.

Hooper Water Improvement District

GREAT BASIN ENGINEERING

5746 SOUTH 1475 EAST OGDEN, UTAH 84403
 MAIN (801)394-4515 S.L.C (801)521-0222 FAX (801)392-7544
 WWW.GREATBASINENGINEERING.COM