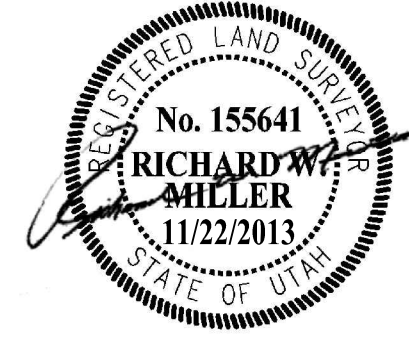


SURVEYOR'S CERTIFICATE

I, RICHARD W. MILLER, DO HEREBY CERTIFY THAT I AM A REGISTERED LAND SURVEYOR, AND THAT I HOLD CERTIFICATE NO. 155641, AS PRESCRIBED UNDER THE LAWS OF THE STATE OF UTAH. I FURTHER CERTIFY THAT THIS PLAT OF ROAD DEDICATION OF SUMMIT PASS AND SPRING PARK, IN WEBER COUNTY, UTAH, HAS BEEN DRAWN CORRECTLY TO THE DESIGNATED SCALE AND IS A TRUE AND CORRECT REPRESENTATION OF THE HEREIN DESCRIBED LANDS INCLUDED IN SAID ROAD DEDICATION, BASED UPON DATA COMPILED FROM THE RECORDS IN THE WEBER COUNTY RECORDER'S OFFICE AND FROM SURVEY MADE UNDER MY DIRECTION ON THE GROUND. I FURTHER CERTIFY THAT THE REQUIREMENTS OF ALL APPLICABLE STATUTES AND ORDINANCES OF WEBER COUNTY CONCERNING SURVEY REQUIREMENTS PERTAINING TO ROAD DEDICATIONS HAS BEEN MET.

RICHARD W. MILLER
PROFESSIONAL LAND SURVEYOR
UTAH CERTIFICATE NO. 155641



LEGAL DESCRIPTIONS:

A DESCRIPTION ALONG THE CENTERLINE OF SUMMIT PASS:

BEGINNING AT A POINT THAT IS ON THE SOUTHERLY LINE OF A COUNTY ROAD (ALSO KNOWN AS STATE HIGHWAY 158) SAID POINT ALSO BEING NORTH 15°55'55" EAST 158.35 FEET ALONG THE LINE BETWEEN THE NORTHEAST CORNER OF SECTION 1, TOWNSHIP 7 NORTH, RANGE 1 EAST, SALT LAKE BASE AND MERIDIAN AND THE SET WEBER COUNTY MONUMENT ON THE WEBER/CACHE COUNTY LINE, SOUTH 283.74 FEET TO A POINT ON THE CENTERLINE OF SAID COUNTY ROAD, AND SOUTH 28°45'09" EAST 50.51 FEET FROM SAID NORTHEAST CORNER OF SECTION 1, RUNNING THENCE SOUTH 28°45'09" EAST 383.38 FEET; THENCE SOUTHEASTERLY ALONG A 200.00 FOOT RADIUS CURVE TO THE LEFT, (CHORD BEARS SOUTH 35°52'00" EAST A DISTANCE OF 49.54 FEET), THROUGH A CENTRAL ANGLE OF 14°13'49", A DISTANCE OF 49.67 FEET; THENCE SOUTH 42°58'51" EAST 85.82 FEET; THENCE SOUTHEASTERLY ALONG A 200.00 FOOT RADIUS CURVE TO THE RIGHT, (CHORD BEARS SOUTH 26°33'36" EAST A DISTANCE OF 113.07 FEET), THROUGH A CENTRAL ANGLE OF 32°50'27", A DISTANCE OF 114.64 FEET; THENCE SOUTH 10°08'25" EAST 52.32 FEET; THENCE SOUTHEASTERLY ALONG A 208.17 FOOT RADIUS CURVE TO THE LEFT, (CHORD BEARS SOUTH 23°51'51" EAST A DISTANCE OF 99.13 FEET), THROUGH A CENTRAL ANGLE OF 27°32'57", A DISTANCE OF 100.09 FEET; THENCE SOUTH 37°41'22" EAST 86.22 FEET; THENCE SOUTHEASTERLY ALONG A 697.48 FOOT RADIUS CURVE TO THE LEFT, (CHORD BEARS SOUTH 41°47'48" EAST A DISTANCE OF 99.91 FEET), THROUGH A CENTRAL ANGLE OF 08°12'53", A DISTANCE OF 100.07 FEET; THENCE SOUTH 10°08'25" EAST 52.32 FEET; THENCE SOUTHEASTERLY ALONG A 246.49 FOOT RADIUS CURVE TO THE RIGHT, (CHORD BEARS SOUTH 34°16'55" EAST A DISTANCE OF 99.32 FEET), THROUGH A CENTRAL ANGLE OF 23°14'40", A DISTANCE OF 100.00 FEET; THENCE SOUTH 22°39'35" EAST 49.01 FEET; THENCE SOUTHEASTERLY ALONG A 1,220.77 FOOT RADIUS CURVE TO THE LEFT, (CHORD BEARS SOUTH 25°00'23" EAST A DISTANCE OF 99.97 FEET), THROUGH A CENTRAL ANGLE OF 04°41'36", A DISTANCE OF 100.00 FEET; THENCE SOUTH 27°21'11" EAST 37.77 FEET; THENCE SOUTHEASTERLY ALONG A 400.00 FOOT RADIUS CURVE TO THE LEFT, (CHORD BEARS SOUTH 50°43'49" EAST A DISTANCE OF 37.42 FEET), THROUGH A CENTRAL ANGLE OF 46°45'15", A DISTANCE OF 326.41 FEET; THENCE SOUTH 74°06'26" EAST 197.06 FEET; THENCE EASTERLY ALONG A 500.00 FOOT RADIUS CURVE TO THE LEFT, (CHORD BEARS SOUTH 83°02'49" EAST A DISTANCE OF 155.40 FEET), THROUGH A CENTRAL ANGLE OF 17°52'47", A DISTANCE OF 156.03 FEET; THENCE SOUTH 82°02'49" EAST 151.85 FEET; THENCE EASTERLY ALONG A 208.89 FOOT RADIUS CURVE TO THE RIGHT, (CHORD BEARS SOUTH 78°14'49" EAST A DISTANCE OF 99.22 FEET), THROUGH A CENTRAL ANGLE OF 27°28'37", A DISTANCE OF 100.17 FEET; THENCE SOUTH 64°30'36" EAST 66.59 FEET; THENCE EASTERLY ALONG A 545.32 FOOT RADIUS CURVE TO THE LEFT, (CHORD BEARS SOUTH 69°45'48" EAST A DISTANCE OF 99.86 FEET), THROUGH A CENTRAL ANGLE OF 10°30'24", A DISTANCE OF 100.00 FEET; THENCE SOUTH 76°41' FEET; THENCE SOUTHEASTERLY ALONG A 278.88 FOOT RADIUS CURVE TO THE RIGHT, (CHORD BEARS SOUTH 64°43'39" EAST A DISTANCE OF 99.47 FEET), THROUGH A CENTRAL ANGLE OF 20°32'41", A DISTANCE OF 100.00 FEET; THENCE SOUTH 54°28'19" EAST 232.48 FEET; THENCE SOUTHEASTERLY ALONG A 1,451.47 FOOT RADIUS CURVE TO THE LEFT, (CHORD BEARS SOUTH 56°26'44" EAST A DISTANCE OF 99.98 FEET), THROUGH A CENTRAL ANGLE OF 03°56'51", A DISTANCE OF 100.00 FEET; THENCE SOUTH 58°25'19" EAST 620.91 FEET; THENCE SOUTHEASTERLY ALONG A 1,500.00 FOOT RADIUS CURVE TO THE LEFT, (CHORD BEARS SOUTH 64°31'12" EAST A DISTANCE OF 318.83 FEET), THROUGH A CENTRAL ANGLE OF 12°12'05", A DISTANCE OF 319.43 FEET; THENCE SOUTH 70°37'41" EAST 238.50 FEET; THENCE SOUTHEASTERLY ALONG A 200.00 FOOT RADIUS CURVE TO THE RIGHT, (CHORD BEARS SOUTH 50°58'22" EAST A DISTANCE OF 134.50 FEET), THROUGH A CENTRAL ANGLE OF 39°17'45", A DISTANCE OF 137.17 FEET; THENCE SOUTH 31°02'51" EAST 63.17 FEET; THENCE SOUTHEASTERLY ALONG A 1,807.50 FOOT RADIUS CURVE TO THE RIGHT, (CHORD BEARS SOUTH 29°44'24" EAST A DISTANCE OF 99.99 FEET), THROUGH A CENTRAL ANGLE OF 03°10'12", A DISTANCE OF 100.00 FEET; THENCE SOUTH 28°09'18" EAST 13.65 FEET; THENCE SOUTHEASTERLY ALONG A 426.10 FOOT RADIUS CURVE TO THE LEFT, (CHORD BEARS SOUTH 33°45'52" EAST A DISTANCE OF 83.32 FEET), THROUGH A CENTRAL ANGLE OF 11°31'09", A DISTANCE OF 83.45 FEET; THENCE SOUTH 39°22'27" EAST 137.41 FEET; THENCE SOUTHEASTERLY ALONG A 369.11 FOOT RADIUS NON-TANGENT CURVE TO THE RIGHT, (CHORD BEARS SOUTH 24°15'16" EAST A DISTANCE OF 193.04 FEET), THROUGH A CENTRAL ANGLE OF 30°19'02", A DISTANCE OF 195.31 FEET; THENCE SOUTH 09°05'45" EAST 309.10 FEET; THENCE SOUTHERLY ALONG A 1,700.00 FOOT RADIUS CURVE TO THE LEFT, (CHORD BEARS SOUTH 14°04'49" EAST A DISTANCE OF 295.32 FEET), THROUGH A CENTRAL ANGLE OF 09°57'57", A DISTANCE OF 295.69 FEET; THENCE SOUTH 19°03'42" EAST 190.69 FEET; THENCE SOUTHERLY ALONG A 180.00 FOOT RADIUS CURVE TO THE RIGHT, (CHORD BEARS SOUTH 10°09'42" WEST A DISTANCE OF 175.76 FEET), THROUGH A CENTRAL ANGLE OF 58°26'48", A DISTANCE OF 183.62 FEET; THENCE SOUTH 39°23'06" WEST 54.26 FEET; THENCE SOUTHERLY ALONG A 180.00 FOOT RADIUS CURVE TO THE LEFT, (CHORD BEARS SOUTH 10°04'10" EAST A DISTANCE OF 273.56 FEET), THROUGH A CENTRAL ANGLE OF 48°54'34", A DISTANCE OF 310.73 FEET; THENCE SOUTH 57°31'27" EAST 20.00 FEET; THENCE EASTERLY ALONG A 182.83 FOOT RADIUS CURVE TO THE LEFT, (CHORD BEARS SOUTH 75°11'36" EAST A DISTANCE OF 98.76 FEET), THROUGH A CENTRAL ANGLE OF 31°20'19", A DISTANCE OF 100.00 FEET; THENCE NORTH 89°08'14" EAST 27.32 FEET; THENCE EASTERLY ALONG A 450.21 FOOT RADIUS CURVE TO THE LEFT, (CHORD BEARS NORTH 82°46'27" EAST A DISTANCE OF 99.79 FEET), THROUGH A CENTRAL ANGLE OF 12°43'35", A DISTANCE OF 100.00 FEET; THENCE NORTH 76°24'39" EAST 166.99 FEET; THENCE EASTERLY ALONG A 180.00 FOOT RADIUS CURVE TO THE RIGHT, (CHORD BEARS SOUTH 80°40'01" EAST A DISTANCE OF 140.21 FEET), THROUGH A CENTRAL ANGLE OF 45°50'39", A DISTANCE OF 144.02 FEET; THENCE SOUTH 57°44'42" EAST 14.03 FEET; THENCE EASTERLY ALONG A 350.00 FOOT RADIUS CURVE TO THE LEFT, (CHORD BEARS SOUTH 78°01'21" EAST A DISTANCE OF 242.60 FEET), THROUGH A CENTRAL ANGLE OF 40°33'19", A DISTANCE OF 247.74 FEET; THENCE NORTH 81°42'59" EAST 63.17 FEET; THENCE EASTERLY ALONG A 451.71 FOOT RADIUS CURVE TO THE RIGHT, (CHORD BEARS NORTH 88°04'31" EAST A DISTANCE OF 100.32 FEET), THROUGH A CENTRAL ANGLE OF 12°45'03", A DISTANCE OF 100.53 FEET; THENCE SOUTH 05°32'57" EAST 56.26 FEET; THENCE EASTERLY ALONG A 700.00 FOOT RADIUS CURVE TO THE LEFT, (CHORD BEARS NORTH 81°41'37" EAST A DISTANCE OF 309.15 FEET), THROUGH A CENTRAL ANGLE OF 25°30'52", A DISTANCE OF 311.72 FEET; THENCE NORTH 68°56'11" EAST 94.64 FEET; THENCE EASTERLY ALONG A 200.00 FOOT RADIUS CURVE TO THE RIGHT, (CHORD BEARS NORTH 85°01'33" EAST A DISTANCE OF 110.86 FEET), THROUGH A CENTRAL ANGLE OF 32°10'44", A DISTANCE OF 112.33 FEET; THENCE SOUTH 78°53'05" EAST 41.36 FEET; THENCE EASTERLY ALONG A 250.00 FOOT RADIUS CURVE TO THE LEFT, (CHORD BEARS NORTH 86°13'07" EAST A DISTANCE OF 128.54 FEET), THROUGH A CENTRAL ANGLE OF 19°26'42", A DISTANCE OF 130.00 FEET; THENCE NORTH 71°19'14" EAST 174.07 FEET; THENCE EASTERLY ALONG A 1,000.00 FOOT RADIUS CURVE TO THE RIGHT, (CHORD BEARS NORTH 76°42'19" EAST A DISTANCE OF 187.63 FEET), THROUGH A CENTRAL ANGLE OF 10°45'58", A DISTANCE OF 187.90 FEET; THENCE NORTH 82°05'18" EAST 101.93 FEET; THENCE EASTERLY ALONG A 426.15 FOOT RADIUS CURVE TO THE RIGHT, (CHORD BEARS NORTH 88°48'39" EAST A DISTANCE OF 99.77 FEET), THROUGH A CENTRAL ANGLE OF 19°26'42", A DISTANCE OF 100.00 FEET; THENCE SOUTH 84°28'01" EAST 114.11 FEET; THENCE EASTERLY ALONG A 3,023.76 FOOT RADIUS CURVE TO THE LEFT, (CHORD BEARS SOUTH 85°24'51" EAST A DISTANCE OF 100.00 FEET), THROUGH A CENTRAL ANGLE OF 01°53'41", A DISTANCE OF 100.00 FEET; THENCE SOUTH 86°21'42" EAST 297.63 FEET; THENCE EASTERLY ALONG A 267.82 FOOT RADIUS CURVE TO THE LEFT, (CHORD BEARS NORTH 82°56'30" EAST A DISTANCE OF 99.42 FEET), THROUGH A CENTRAL ANGLE OF 21°23'37", A DISTANCE OF 100.00 FEET; THENCE NORTH 72°14'41" EAST 103.92 FEET; THENCE EASTERLY ALONG A 300.00 FOOT RADIUS CURVE TO THE RIGHT, (CHORD BEARS NORTH 88°38'49" EAST A DISTANCE OF 169.42 FEET), THROUGH A CENTRAL ANGLE OF 32°48'14", A DISTANCE OF 171.76 FEET; THENCE SOUTH 74°57'04" EAST 46.14 FEET;

LEGAL DESCRIPTIONS (CONT):

THENCE EASTERLY ALONG A 450.00 FOOT RADIUS CURVE TO THE LEFT, (CHORD BEARS SOUTH 88°17'33" EAST A DISTANCE OF 207.67 FEET), THROUGH A CENTRAL ANGLE OF 26°40'57", A DISTANCE OF 209.56 FEET; THENCE NORTH 78°21'59" EAST 163.17 FEET; THENCE EASTERLY ALONG A 500.00 FOOT RADIUS CURVE TO THE RIGHT, (CHORD BEARS NORTH 87°57'27" EAST A DISTANCE OF 166.62 FEET), THROUGH A CENTRAL ANGLE OF 19°10'57", A DISTANCE OF 167.40 FEET; THENCE SOUTH 82°27'04" EAST 241.01 FEET; THENCE EASTERLY ALONG A 500.00 FOOT RADIUS CURVE TO THE RIGHT, (CHORD BEARS SOUTH 76°12'08" EAST A DISTANCE OF 108.85 FEET), THROUGH A CENTRAL ANGLE OF 12°29'53", A DISTANCE OF 104.07 FEET; THENCE SOUTH 69°57'12" EAST 128.40 FEET; THENCE EASTERLY ALONG A 300.00 FOOT RADIUS CURVE TO THE LEFT, (CHORD BEARS SOUTH 81°03'41" EAST A DISTANCE OF 115.60 FEET), THROUGH A CENTRAL ANGLE OF 22°12'58", A DISTANCE OF 116.32 FEET; THENCE NORTH 87°49'50" EAST 231.14 FEET; THENCE EASTERLY ALONG A 400.00 FOOT RADIUS CURVE TO THE RIGHT, (CHORD BEARS SOUTH 70°25'50" EAST A DISTANCE OF 301.26 FEET), THROUGH A CENTRAL ANGLE OF 44°14'39", A DISTANCE OF 308.88 FEET; THENCE SOUTH 47°55'31" EAST 81.02 FEET; THENCE SOUTHEASTERLY ALONG A 600.00 FOOT RADIUS CURVE TO THE RIGHT, (CHORD BEARS SOUTH 36°08'41" EAST A DISTANCE OF 245.00 FEET), THROUGH A CENTRAL ANGLE OF 23°33'40", A DISTANCE OF 246.73 FEET; THENCE SOUTH 24°21'51" EAST 113.52 FEET; THENCE SOUTHERLY ALONG A 600.00 FOOT RADIUS CURVE TO THE RIGHT, (CHORD BEARS SOUTH 15°29'46" EAST A DISTANCE OF 184.99 FEET), THROUGH A CENTRAL ANGLE OF 17°44'11", A DISTANCE OF 185.74 FEET; THENCE SOUTH 06°37'40" EAST 119.34 FEET; THENCE SOUTHERLY ALONG A 570.42 FOOT RADIUS CURVE TO THE LEFT, (CHORD BEARS SOUTH 11°59'10" EAST A DISTANCE OF 99.87 FEET), THROUGH A CENTRAL ANGLE OF 10°02'40", A DISTANCE OF 100.00 FEET; THENCE SOUTH 16°40'20" EAST 261.55 FEET; THENCE SOUTHEASTERLY ALONG A 400.00 FOOT RADIUS CURVE TO THE LEFT, (CHORD BEARS SOUTH 29°31'31" EAST A DISTANCE OF 177.96 FEET), THROUGH A CENTRAL ANGLE OF 25°42'21", A DISTANCE OF 179.46 FEET; THENCE SOUTH 42°22'41" EAST 79.01 FEET; THENCE SOUTHEASTERLY ALONG A 400.00 FOOT RADIUS CURVE TO THE LEFT, (CHORD BEARS SOUTH 54°25'37" EAST A DISTANCE OF 167.00 FEET), THROUGH A CENTRAL ANGLE OF 24°05'53", A DISTANCE OF 168.24 FEET; THENCE SOUTH 66°28'34" EAST 225.95 FEET; THENCE SOUTHEASTERLY ALONG A 400.00 FOOT RADIUS CURVE TO THE RIGHT, (CHORD BEARS SOUTH 57°28'49" EAST A DISTANCE OF 125.09 FEET), THROUGH A CENTRAL ANGLE OF 17°59'29", A DISTANCE OF 125.60 FEET; THENCE SOUTH 48°29'04" EAST 89.38 FEET; THENCE SOUTHEASTERLY ALONG A 400.00 FOOT RADIUS CURVE TO THE LEFT, (CHORD BEARS SOUTH 66°06'41" EAST A DISTANCE OF 242.25 FEET), THROUGH A CENTRAL ANGLE OF 35°15'14", A DISTANCE OF 246.12 FEET; THENCE SOUTH 83°44'18" EAST 166.47 FEET; THENCE EASTERLY ALONG A 750.00 FOOT RADIUS CURVE TO THE LEFT, (CHORD BEARS SOUTH 88°46'32" EAST A DISTANCE OF 131.71 FEET), THROUGH A CENTRAL ANGLE OF 10°04'29", A DISTANCE OF 131.88 FEET; THENCE NORTH 86°11'14" EAST 193.22 FEET; THENCE SOUTHEASTERLY ALONG A 250.00 FOOT RADIUS CURVE TO THE RIGHT, (CHORD BEARS SOUTH 36°46'11" EAST A DISTANCE OF 419.54 FEET), THROUGH A CENTRAL ANGLE OF 11°40'51", A DISTANCE OF 417.79 FEET; THENCE SOUTH 20°16'24" WEST 180.10 FEET; THENCE SOUTHERLY ALONG A 700.00 FOOT RADIUS CURVE TO THE LEFT, (CHORD BEARS SOUTH 10°42'09" WEST A DISTANCE OF 232.77 FEET), THROUGH A CENTRAL ANGLE OF 19°08'30", A DISTANCE OF 233.86 FEET; THENCE SOUTH 01°07'54" WEST 226.01 FEET TO THE POINT OF TERMINUS

A DESCRIPTION ALONG THE CENTERLINE OF SPRING PARK:

BEGINNING AT A POINT THAT IS ON THE WESTERLY RIGHT OF WAY LINE OF SUMMIT PASS, SAID POINT LIES NORTH 87°49'19" EAST 1,401.41 FEET ALONG THE SECTION LINE AND SOUTH 1,036.82 FEET FROM THE SOUTH QUARTER CORNER OF SECTION 5, TOWNSHIP 7 NORTH, RANGE 2 EAST, SALT LAKE BASE AND MERIDIAN, SAID POINT ALSO LIES SOUTH 6,493.21 FEET AND EAST 8,908.38 FEET FROM THE NORTHEAST CORNER OF SECTION 1, TOWNSHIP 7 NORTH, RANGE 1 EAST, SALT LAKE BASE AND MERIDIAN; RUNNING THENCE WESTERLY ALONG A 75.00 FOOT RADIUS CURVE TO THE LEFT, (CHORD BEARS SOUTH 77°35'02" WEST A DISTANCE OF 45.37 FEET), THROUGH A CENTRAL ANGLE OF 35°12'42", A DISTANCE OF 46.09 FEET; THENCE SOUTH 59°58'41" WEST 52.40 FEET; THENCE WESTERLY ALONG A 120.00 FOOT RADIUS CURVE TO THE RIGHT, (CHORD BEARS NORTH 86°21'09" WEST A DISTANCE OF 139.06 FEET), THROUGH A CENTRAL ANGLE OF 67°20'21", A DISTANCE OF 141.04 FEET; THENCE NORTH 52°40'58" WEST 59.72 FEET; THENCE NORTHWESTERLY ALONG A 250.00 FOOT RADIUS CURVE TO THE LEFT, (CHORD BEARS NORTH 65°16'53" WEST A DISTANCE OF 109.06 FEET), THROUGH A CENTRAL ANGLE OF 25°11'49", A DISTANCE OF 109.94 FEET; THENCE NORTH 77°52'47" WEST 144.40 FEET; THENCE WESTERLY ALONG A 250.00 FOOT RADIUS CURVE TO THE LEFT, (CHORD BEARS SOUTH 89°14'55" WEST A DISTANCE OF 111.38 FEET), THROUGH A CENTRAL ANGLE OF 25°44'36", A DISTANCE OF 112.33 FEET; THENCE SOUTH 76°22'37" WEST 117.26 FEET; THENCE WESTERLY ALONG A 250.00 FOOT RADIUS CURVE TO THE RIGHT, (CHORD BEARS SOUTH 88°58'58" WEST A DISTANCE OF 104.12 FEET), THROUGH A CENTRAL ANGLE OF 25°12'43", A DISTANCE OF 110.01 FEET; THENCE NORTH 78°24'40" WEST 62.39 FEET TO THE POINT OF TERMINUS

BASIS OF BEARINGS FOR THIS LEGAL DESCRIPTION IS NORTH 89°55'51" WEST ALONG THE LINE BETWEEN THE NORTHEAST CORNER OF SECTION 1, TOWNSHIP 7 NORTH, RANGE 1 EAST, SALT LAKE BASE AND MERIDIAN AND THE SET WEBER COUNTY MONUMENT ON THE INTERSECTION OF THE WEBER/CACHE COUNTY LINE AND THE SECTION LINE. THIS BASIS DIFFERS FROM WEBER COUNTY SURVEYORS BASIS BY 00°00'14" AS SHOWN ON COUNTY LINE DECLARATION RECORDED PLAT BOOK 74, PAGE 64.

- 1. Add this statement: "In a manner that will not prevent the use of the road."
2. Use modified language for Cache interlocal.
3. Check ties between monuments shown on page 2 to ensure adequate annotations and accuracy of found and calculated monuments.
4. Monuments are to be set in intersections of public and private roads, please show these on this plat.

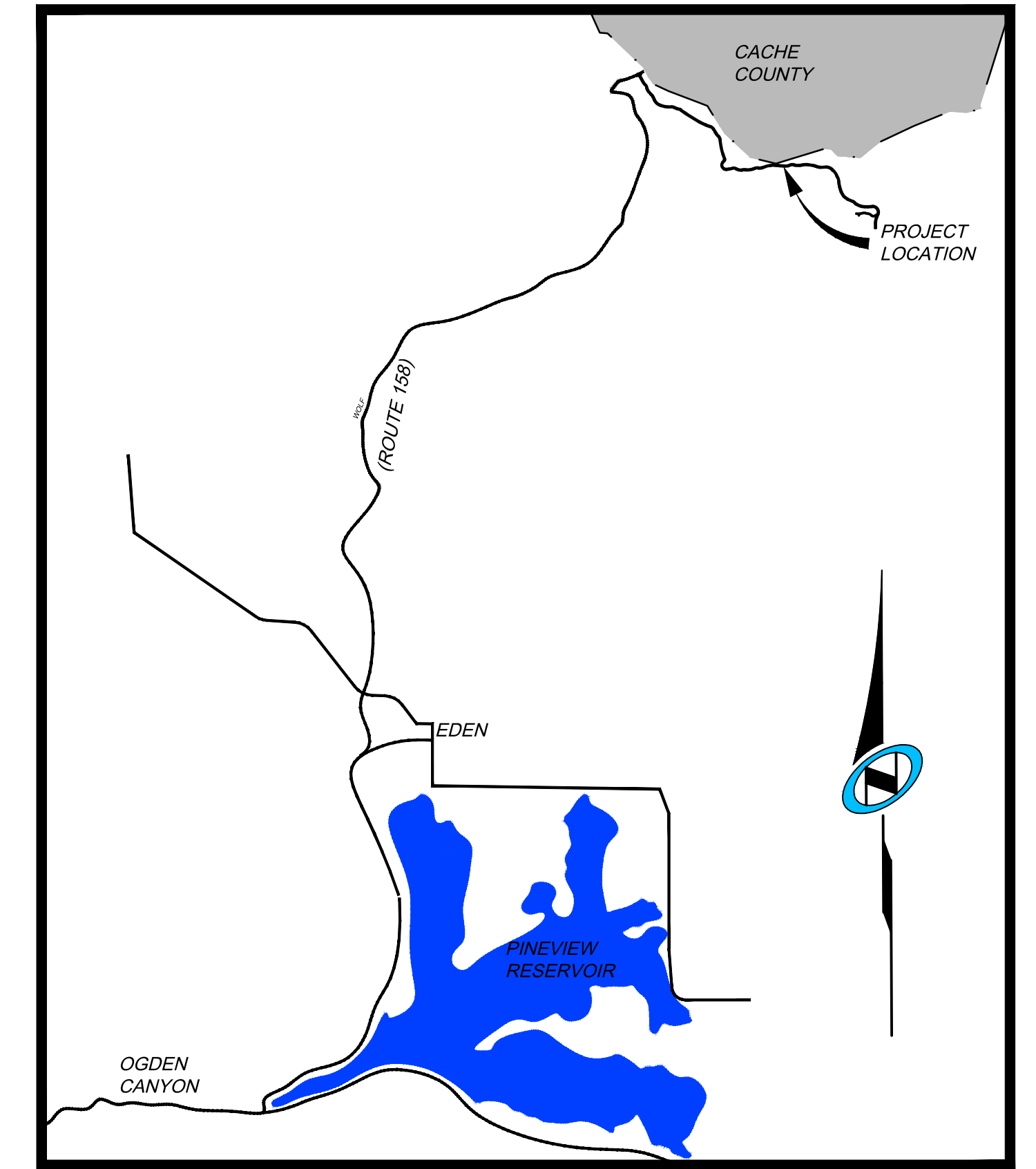
DEDICATION PLAT FOR SUMMIT PASS AND SPRING PARK

LOCATED IN SECTION 1 OF TOWNSHIP 7 NORTH, RANGE 1 EAST AND SECTIONS 6, 5, & 8 OF TOWNSHIP 7 NORTH, RANGE 2 EAST, SALT LAKE BASE AND MERIDIAN, WEBER COUNTY, UTAH

NOVEMBER 27, 2013

PLAT NOTES:

- 1. DECLARANT HEREBY GRANTS TO WEBER COUNTY AN EASEMENT OF VARYING WIDTH ALONG EACH SIDE OF THE ROADS DEDICATED HEREBY ("SLOPE EASEMENT") AS MORE FULLY DESCRIBED IN THAT CERTAIN MASTER DECLARATION OF COVENANTS, CONDITIONS, EASEMENTS AND RESTRICTIONS FOR SUMMIT EDEN ("MASTER DECLARATION") RECORDED IN THE OFFICIAL RECORDS OF WEBER COUNTY. SUCH SLOPE EASEMENT IS FOR THE BENEFIT OF WEBER COUNTY, ITS EMPLOYEES, AND CONTRACTORS, FOR THE PURPOSE OF STABILIZING, CUTTING SLOPES, AND PERFORMING OTHER CONSTRUCTION AND MAINTENANCE TO PREVENT EROSION ALONG THE ROADS. THE PORTION OF THE SLOPE EASEMENT ON A PLATTED LOT SHALL AUTOMATICALLY TERMINATE AT SUCH TIME AS A CERTIFICATE OF OCCUPANCY IS ISSUED FOR A RESIDENTIAL BUILDING CONSTRUCTED ON SUCH LOT.
2. DECLARANT HEREBY RESERVES TO ITSELF A BLANKET EASEMENT AND RIGHT OVER, UNDER, ACROSS AND THROUGH THE PUBLIC ROAD DEDICATED HEREON FOR THE CONSTRUCTION, MAINTENANCE, AND OPERATION OF TUNNELS, BRIDGES AND/OR SKI LIFTS OVER AND UNDER THE ROAD FOR ANY SUCH TUNNELS, BRIDGES AND/OR SKI LIFTS. DECLARANT SHALL MAINTAIN ANY SKI RUNS, TRAILS, OR LIFTS OVER OR UNDER THE ROAD, AND THE COUNTY SHALL OWN, OPERATE, AND MAINTAIN ALL PORTIONS OF THE ROADS, INCLUDING THE STRUCTURE OF ANY TUNNELS OR BRIDGES. DECLARANT MAY CONVEY, TRANSFER, OR ASSIGN ITS RIGHTS WITH RESPECT TO SUCH EASEMENT.
3. DECLARANT HEREBY RESERVES TO ITSELF AN EASEMENT OVER THE ROAD DEDICATED HEREBY FOR THE CONSTRUCTION, MAINTENANCE, OPERATION, AND USE OF A SKI LIFT ("SKI LIFT EASEMENT"), AS MAY BE FURTHER SET FORTH IN A SEPARATE EASEMENT AGREEMENT RECORDED AGAINST SUCH PROPERTY. DECLARANT HEREBY GRANTS AN EASEMENT IN FAVOR OF SUMMIT EDEN ESTATES ASSOCIATION, INC., A UTAH NONPROFIT CORPORATION AND SUMMIT EDEN OWNERS ASSOCIATION, INC., A UTAH NONPROFIT CORPORATION AND THEIR MEMBERS FOR USE AND ENJOYMENT OF THE SKI LIFT EASEMENT IN ACCORDANCE WITH ANY RULES AND REGULATIONS ADOPTED BY DECLARANT.
4. DECLARANT HEREBY GRANTS TO WEBER COUNTY AN EASEMENT OVER AND ACROSS ALL AREAS SHOWN HEREOF AS STORM DRAIN EASEMENTS FOR THE PURPOSE OF INSTALLING, MAINTAINING AND OPERATING EQUIPMENT AND FACILITIES ABOVE AND BELOW GROUND AS MAY BE NECESSARY OR DESIRABLE IN PROVIDING STORM DRAINAGE FOR THE DEDICATED RIGHT OF WAY, INCLUDING THE RIGHT OF ACCESS TO ANY FACILITIES AND THE RIGHT TO REQUIRE REMOVAL OF ANY OBSTRUCTIONS INCLUDING STRUCTURES, TREES, AND VEGETATION THAT MAY HAVE BEEN PLACED WITHIN THE EASEMENTS AND INTERFERE WITH STORM DRAINAGE. AT NO TIME MAY ANY PERMANENT STRUCTURES BE PLACED WITHIN THE STORM DRAIN EASEMENTS WHICH INTERFERES WITH THE USE OF THE EASEMENTS WITHOUT THE PRIOR WRITTEN APPROVAL OF WEBER COUNTY.



Vicinity Map N.T.S.

ACKNOWLEDGMENT

State of Utah } S.S.
County of }
The foregoing instrument was acknowledged before me this day of _____ A.D., 20____, by _____, who is the _____ of _____.

My commission expires: _____ Residing at: _____

State of Utah } S.S.
County of }
The foregoing instrument was acknowledged before me this day of _____ A.D., 20____, by _____, who is the _____ of _____.

My commission expires: _____ Residing at: _____

OWNER'S DEDICATION

SUMMIT MOUNTAIN HOLDING GROUP, LLC. ("DECLARANT"), AS THE OWNER OF THE HEREIN DESCRIBED TRACT OF LAND, DOES HEREBY DEDICATE, GRANT AND CONVEY TO WEBER COUNTY, STATE OF UTAH, ALL THOSE PARTS OR PORTIONS OF SAID TRACT OF LAND DESIGNATED AS ROADS, STREETS AND EASEMENTS, THE SAME TO BE USED AS PUBLIC THOROUGHFARES FOREVER AS SHOWN HEREOF. SUCH DEDICATION IS SUBJECT TO WEBER COUNTY GRANTING TO THE UNDERSIGNED EASEMENTS OVER A SKI BRIDGE, THROUGH TWO SKI TUNNELS, AND FOR THE CONSTRUCTION AND MAINTENANCE OF A SKI LIFT, WHICH EASEMENTS SHALL BE RECORDED SIMULTANEOUSLY HEREWITH.

IN WITNESS WHEREOF, DECLARANT HAS EXECUTED THIS OWNER'S DEDICATION AS OF THE _____ DAY OF _____, 2013.

BY: SUMMIT REVOLUTION LLC, A UTAH LIMITED LIABILITY COMPANY
ITS: MANAGING MEMBER

BY: ELLIOTT BISNOW
TITLE: MANAGER

BY: GREGORY VINCENT MAURO
TITLE: MANAGER

The plat notes for road dedication plat are incorporated herewith and made part hereof.

DEDICATION FOR SUMMIT PASS AND SPRING PARK COVER SHEET, SIGNATURES, & VICINITY MAP

LOCATED IN SECTION 1, 6, 5 AND 8 TOWNSHIP 7 NORTH, RANGE 1 EAST AND SECTIONS 6, 5 AND 8 OF TOWNSHIP 7 NORTH, RANGE 2 EAST, SALT LAKE BASE AND MERIDIAN, WEBER COUNTY, UTAH
PLAT PREPARED FOR:
SUMMIT MOUNTAIN HOLDING GROUP, LLC.
1355 NORTH 5900 EAST
EDEN, UTAH 84310

WEBER COUNTY ATTORNEY
I HAVE EXAMINED THE FINANCIAL GUARANTEE AND OTHER DOCUMENTS ASSOCIATED WITH THIS SUBDIVISION PLAT AND IN MY OPINION THEY CONFORM WITH THE COUNTY ORDINANCE APPLICABLE THERETO AND NOW IN FORCE AND EFFECT.
SIGNED THIS _____ DAY OF _____, 20____.

WEBER COUNTY SURVEYOR
I HEREBY CERTIFY THAT THE WEBER COUNTY SURVEYOR'S OFFICE HAS REVIEWED THIS PLAT FOR MATHEMATICAL CORRECTNESS, SECTION CORNER DATA AND FOR HARMONY WITH LINES AND MONUMENTS ON RECORD IN THE COUNTY OFFICES. THE APPROVAL OF THIS PLAT BY THE WEBER COUNTY SURVEYORS DOES NOT RELIEVE THE LICENSED LAND SURVEYOR WHO EXECUTED THIS PLAT FROM RESPONSIBILITIES AND/OR LIABILITIES ASSOCIATED THEREWITH. SIGNED THIS _____ DAY OF _____, 20____.

WEBER COUNTY ENGINEER
I HEREBY CERTIFY THAT THE REQUIRED PUBLIC IMPROVEMENT STANDARDS AND DRAWINGS FOR THIS SUBDIVISION CONFORM WITH COUNTY STANDARDS AND THE AMOUNT OF THE FINANCIAL GUARANTEE IS SUFFICIENT FOR THE INSTALLATION OF THESE IMPROVEMENTS. SIGNED THIS _____ DAY OF _____, 20____.

WEBER COUNTY PLANNING COMMISSION APPROVAL
THIS IS TO CERTIFY THAT THIS SUBDIVISION PLAT WAS FULLY APPROVED BY THE WEBER COUNTY PLANNING COMMISSION ON THE DAY OF _____, 20____.

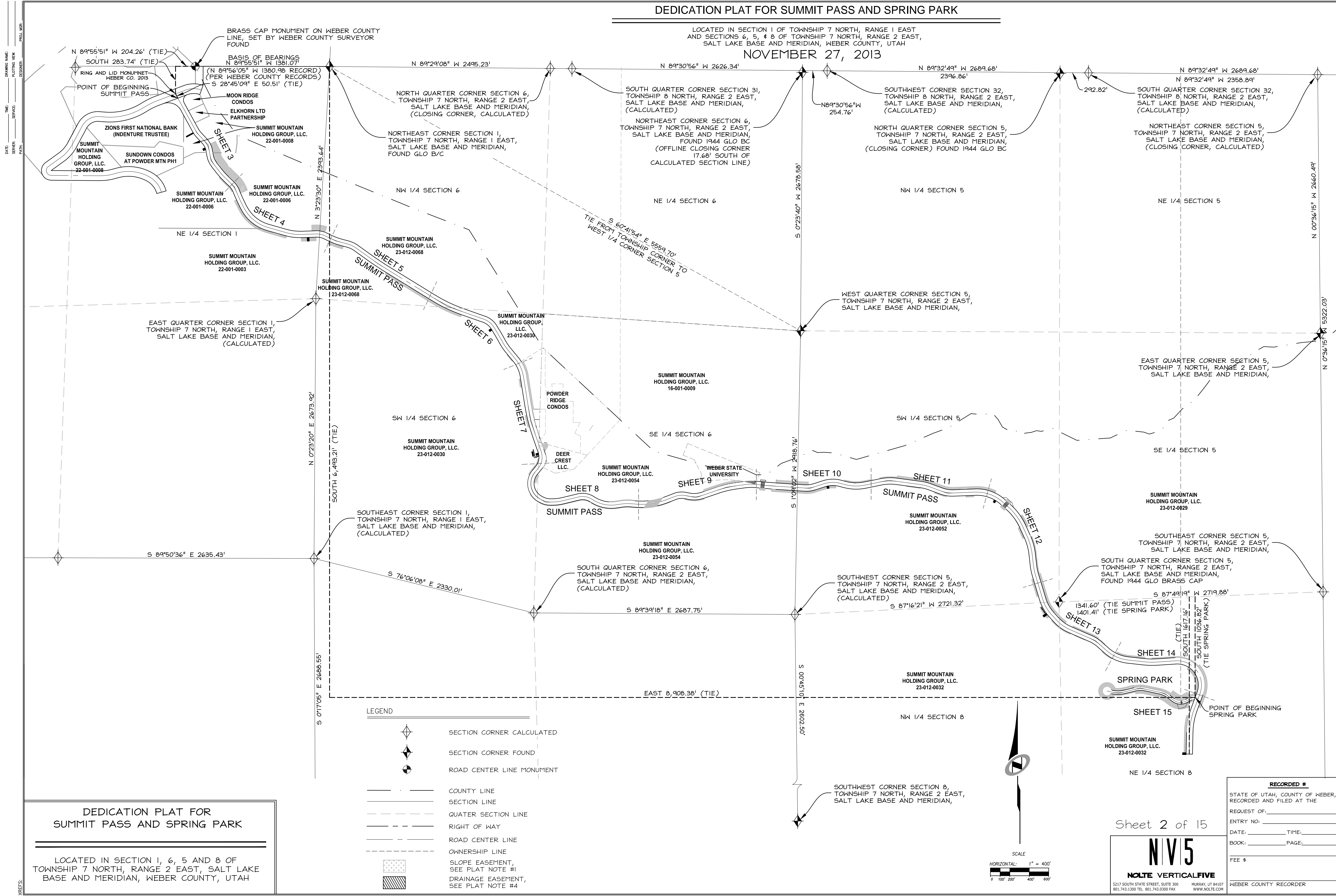
WEBER COUNTY COMMISSION ACCEPTANCE
THIS IS TO CERTIFY THAT THIS SUBDIVISION PLAT, THE DEDICATION OF STREETS AND OTHER PUBLICWAYS AND FINANCIAL GUARANTEE OF PUBLIC IMPROVEMENTS ASSOCIATED WITH THIS SUBDIVISION THEREON ARE HEREBY APPROVED AND ACCEPTED BY THE COMMISSIONERS OF WEBER COUNTY, UTAH THIS _____ DAY OF _____, 20____.

RECORDED #
STATE OF UTAH, COUNTY OF WEBER, RECORDED AND FILED AT THE
REQUEST OF:
ENTRY NO:
DATE:
BOOK:
PAGE:
FEE \$
WEBER COUNTY RECORDER

DEDICATION PLAT FOR SUMMIT PASS AND SPRING PARK

LOCATED IN SECTION 1 OF TOWNSHIP 7 NORTH, RANGE 1 EAST, AND SECTIONS 6, 5, & 8 OF TOWNSHIP 7 NORTH, RANGE 2 EAST, SALT LAKE BASE AND MERIDIAN, WEBER COUNTY, UTAH

NOVEMBER 27, 2013

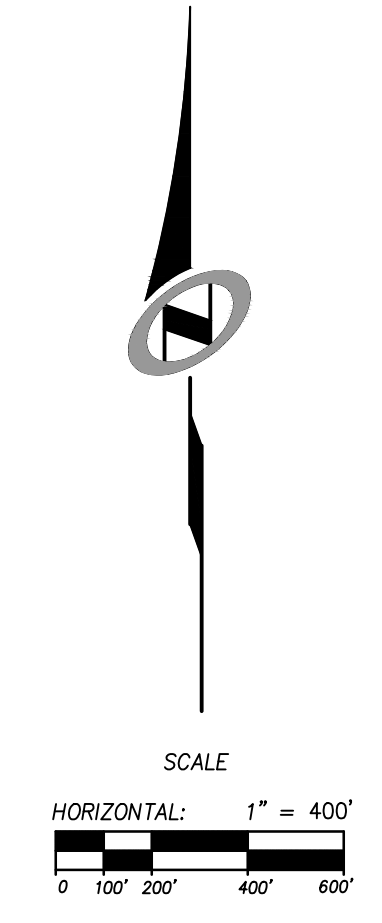


DRAWING NAME: _____
 DATE: _____
 TIME: _____
 SERVER: _____
 SERVICE: _____
 PLOT: _____
 PROJ. MOR: _____
 ESRI: _____
 XREFS: _____

DEDICATION PLAT FOR
SUMMIT PASS AND SPRING PARK

LOCATED IN SECTION 1, 6, 5 AND 8 OF
TOWNSHIP 7 NORTH, RANGE 2 EAST, SALT LAKE
BASE AND MERIDIAN, WEBER COUNTY, UTAH

- LEGEND
- SECTION CORNER CALCULATED
 - SECTION CORNER FOUND
 - ROAD CENTER LINE MONUMENT
 - COUNTY LINE
 - SECTION LINE
 - QUARTER SECTION LINE
 - RIGHT OF WAY
 - ROAD CENTER LINE
 - OWNERSHIP LINE
 - SLOPE EASEMENT, SEE PLAT NOTE #1
 - DRAINAGE EASEMENT, SEE PLAT NOTE #4



Sheet 2 of 15

N|V|5
NOLTE VERTICALFIVE

5217 SOUTH STATE STREET, SUITE 300 MURRAY, UT 84107
801.743.1300 TEL. 801.743.0300 FAX WWW.NOLTE.COM

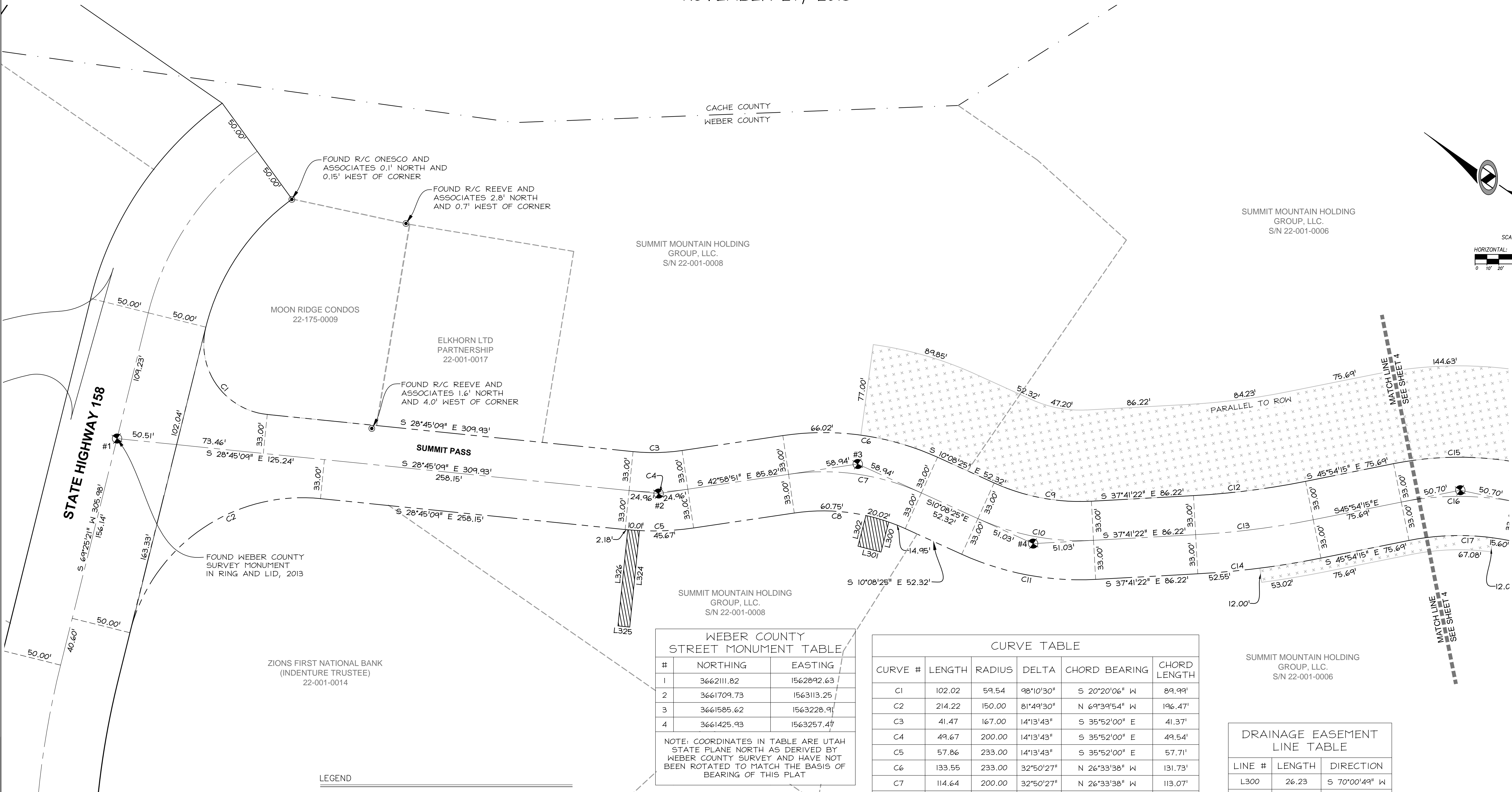
RECORDED # _____
STATE OF UTAH, COUNTY OF WEBER,
RECORDED AND FILED AT THE
REQUEST OF: _____
ENTRY NO: _____
DATE: _____ TIME: _____
BOOK: _____ PAGE: _____
FEE \$ _____
WEBER COUNTY RECORDER

DEDICATION PLAT FOR SUMMIT PASS AND SPRING PARK

LOCATED IN SECTION 1 OF TOWNSHIP 7 NORTH, RANGE 1 EAST
AND SECTIONS 6, 5, & 8 OF TOWNSHIP 7 NORTH, RANGE 2 EAST,
SALT LAKE BASE AND MERIDIAN, WEBER COUNTY, UTAH

NOVEMBER 27, 2013

DATE: _____ TIME: _____
DRAWING NAME: _____ PLOTTING VIEW: _____
SERVICE: _____ DESIGNED BY: _____
PARK: _____



WEBER COUNTY STREET MONUMENT TABLE

#	NORTHING	EASTING
1	3662111.82	1562892.63
2	3661709.73	1563113.25
3	3661585.62	1563228.91
4	3661425.93	1563257.47

NOTE: COORDINATES IN TABLE ARE UTAH STATE PLANE NORTH AS DERIVED BY WEBER COUNTY SURVEY AND HAVE NOT BEEN ROTATED TO MATCH THE BASIS OF BEARING OF THIS PLAT

CURVE TABLE

CURVE #	LENGTH	RADIUS	DELTA	CHORD BEARING	CHORD LENGTH
C1	102.02	59.54	98°10'30"	S 20°20'06" W	89.99'
C2	214.22	150.00	81°49'30"	N 69°39'54" W	196.47'
C3	41.47	167.00	14°13'43"	S 35°52'00" E	41.37'
C4	49.67	200.00	14°13'43"	S 35°52'00" E	49.54'
C5	57.86	233.00	14°13'43"	S 35°52'00" E	57.71'
C6	133.55	233.00	32°50'27"	N 26°33'38" W	131.73'
C7	114.64	200.00	32°50'27"	N 26°33'38" W	113.07'
C8	95.72	167.00	32°50'27"	N 26°33'38" W	94.42'
C9	84.23	175.17	27°32'57"	S 23°54'53" E	83.42'
C10	100.09	208.17	27°32'57"	S 23°54'53" E	99.13'
C11	115.96	241.17	27°32'57"	S 23°54'53" E	114.85'
C12	95.27	664.48	8°12'53"	S 41°47'48" E	95.19'
C13	100.00	697.48	8°12'53"	S 41°47'48" E	99.91'
C14	104.73	730.48	8°12'53"	S 41°47'48" E	104.64'
C15	113.39	279.49	23°14'40"	N 34°16'55" W	112.61'
C16	100.00	246.49	23°14'40"	N 34°16'55" W	99.32'

DRAINAGE EASEMENT LINE TABLE

LINE #	LENGTH	DIRECTION
L300	26.23	S 70°00'49" W
L301	20.00	N 19°59'11" W
L302	26.67	N 70°00'49" E
L324	81.72	S 61°15'50" W
L325	10.00	N 28°44'10" W
L326	81.41	N 61°15'50" E

LEGEND

- SECTION CORNER CALCULATED
- SECTION CORNER FOUND
- ROAD CENTER LINE MONUMENT
- COUNTY LINE
- SECTION LINE
- QUARTER SECTION LINE
- RIGHT OF WAY
- ROAD CENTER LINE
- OWNERSHIP LINE
- SLOPE EASEMENT, SEE PLAT NOTE #1
- DRAINAGE EASEMENT, SEE PLAT NOTE #4

NOTE:
ALL SLOPE EASEMENTS ARE PARALLEL TO R.O.W.

DEDICATION PLAT FOR
SUMMIT PASS AND SPRING PARK

LOCATED IN SECTION 1 OF
TOWNSHIP 7 NORTH, RANGE 2 EAST, SALT LAKE
BASE AND MERIDIAN, WEBER COUNTY, UTAH

SUNDOWN CONDOS AT
POWDER MOUNTAIN PHASE 1
22-093-0021

SUMMIT MOUNTAIN HOLDING
GROUP, LLC.
S/N 22-001-0006

RECORDED #
STATE OF UTAH, COUNTY OF WEBER,
RECORDED AND FILED AT THE
REQUEST OF: _____
ENTRY NO: _____
DATE: _____ TIME: _____
BOOK: _____ PAGE: _____
FEE \$ _____
WEBER COUNTY RECORDER

Sheet 3 of 15

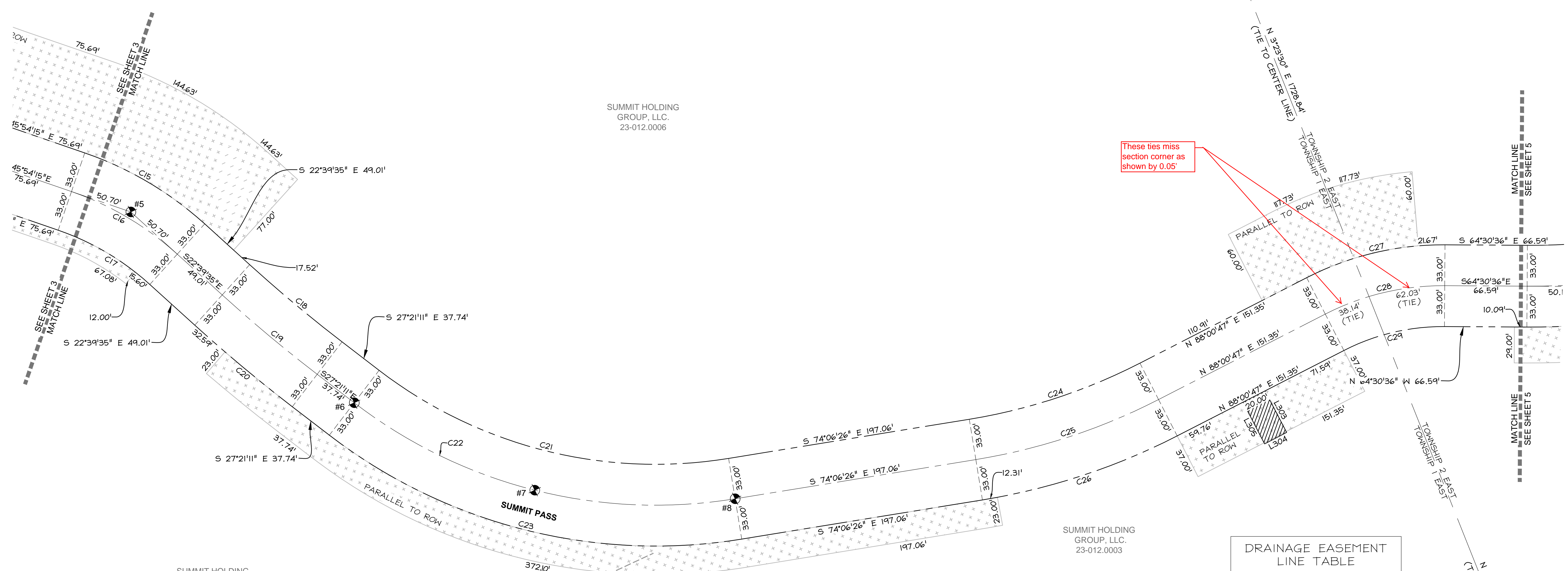
N|V|5
NOLTE VERTICALFIVE
5217 SOUTH STATE STREET, SUITE 300 MURRAY, UT 84107
801.743.1300 TEL. 801.743.0300 FAX WWW.NOLTE.COM

DEDICATION PLAT FOR SUMMIT PASS AND SPRING PARK

LOCATED IN SECTION 1 OF TOWNSHIP 7 NORTH, RANGE 1 EAST
AND SECTIONS 6, 5, & 8 OF TOWNSHIP 7 NORTH, RANGE 2 EAST,
SALT LAKE BASE AND MERIDIAN, WEBER COUNTY, UTAH

NOVEMBER 27, 2013

DATE: _____ TIME: _____
DRAWING NAME: _____ PLOTTING VIEW: _____
SERVER: _____ SERVICE: _____
PAPER: _____ PROJ. MOR: _____



SUMMIT HOLDING GROUP, LLC.
23-012.0006

SUMMIT HOLDING GROUP, LLC.
23-012.0003

SUMMIT HOLDING GROUP, LLC.
23-012.0006

WEBER COUNTY STREET MONUMENT TABLE

#	NORTHING	EASTING
5	3661155.00	1563498.63
6	3660938.97	1563596.60
7	3660813.14	1563698.64
8	3660738.14	1563842.23

NOTE: COORDINATES IN TABLE ARE UTAH STATE PLANE NORTH AS DERIVED BY WEBER COUNTY SURVEY AND HAVE NOT BEEN ROTATED TO MATCH THE BASIS OF BEARING OF THIS PLAT

CURVE TABLE

CURVE #	LENGTH	RADIUS	DELTA	CHORD BEARING	CHORD LENGTH
C15	113.39	279.49	23°14'40"	N 34°16'55" W	112.61'
C16	100.00	246.49	23°14'40"	N 34°16'55" W	99.32'
C17	86.61	213.49	23°14'40"	N 34°16'55" W	86.02'
C18	97.30	1187.77	4°41'36"	S 25°00'23" E	97.27'
C19	100.00	1220.77	4°41'36"	S 25°00'23" E	99.97'
C20	102.70	1253.77	4°41'36"	S 25°00'23" E	102.67'
C21	299.48	367.00	46°45'15"	S 50°43'49" E	291.24'
C22	326.41	400.00	46°45'15"	S 50°43'49" E	317.42'
C23	353.33	433.00	46°45'15"	S 50°43'49" E	343.61'
C24	145.73	467.00	17°52'47"	S 83°02'49" E	145.14'
C25	156.03	500.00	17°52'47"	S 83°02'49" E	155.40'
C26	166.33	533.00	17°52'47"	S 83°02'49" E	165.65'
C27	116.00	241.89	27°28'37"	N 78°14'54" W	114.89'
C28	100.17	208.89	27°28'37"	N 78°14'54" W	99.22'
C29	84.35	175.89	27°28'37"	N 78°14'54" W	83.54'

DRAINAGE EASEMENT LINE TABLE

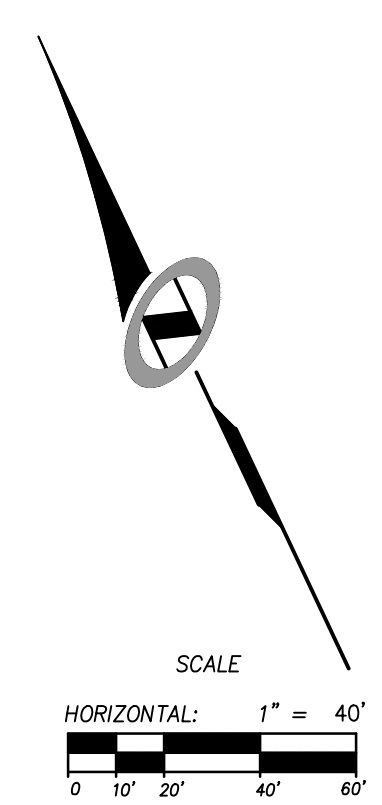
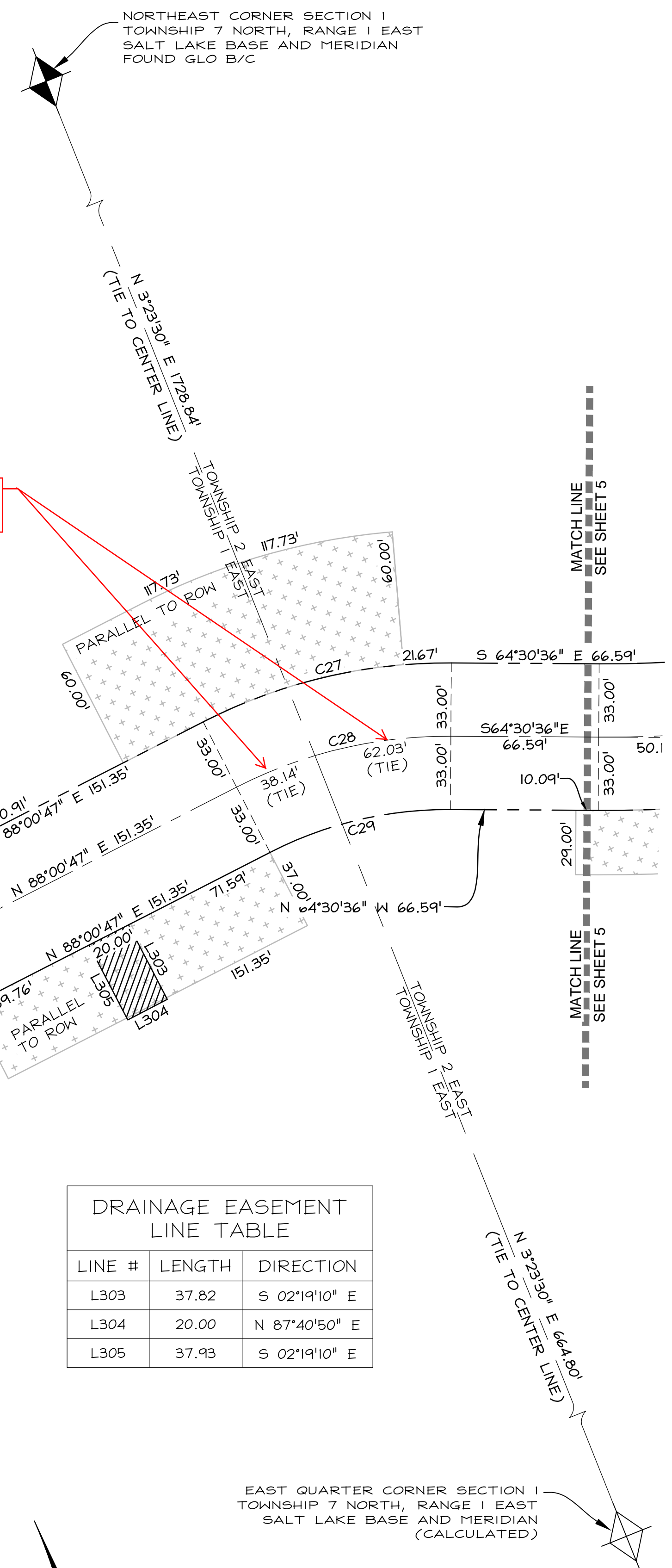
LINE #	LENGTH	DIRECTION
L303	37.82	S 02°19'10" E
L304	20.00	N 87°40'50" E
L305	37.93	S 02°19'10" E

- LEGEND
- SECTION CORNER CALCULATED
 - SECTION CORNER FOUND
 - ROAD CENTER LINE MONUMENT
 - COUNTY LINE
 - SECTION LINE
 - QUATER SECTION LINE
 - RIGHT OF WAY
 - ROAD CENTER LINE
 - OWNERSHIP LINE
 - SLOPE EASEMENT, SEE PLAT NOTE #1
 - DRAINAGE EASEMENT, SEE PLAT NOTE #4

NOTE: ALL SLOPE EASEMENTS ARE PARALLEL TO R.O.W.

DEDICATION PLAT FOR SUMMIT PASS AND SPRING PARK

LOCATED IN SECTION 1 & 6 OF TOWNSHIP 7 NORTH, RANGE 2 EAST, SALT LAKE BASE AND MERIDIAN, WEBER COUNTY, UTAH



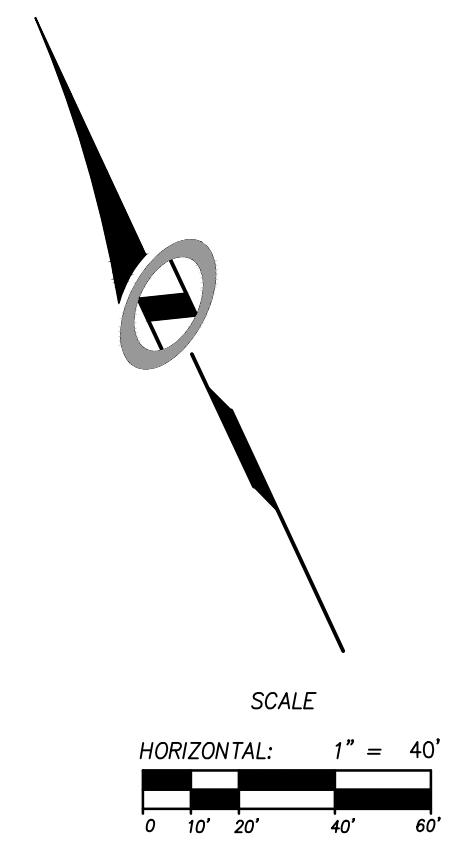
Sheet 4 of 15

N/V/5
NOLTE VERTICALFIVE

5217 SOUTH STATE STREET, SUITE 300 MURRAY, UT 84107
801.743.1300 TEL. 801.743.0300 FAX WWW.NOLTE.COM

RECORDED # _____
STATE OF UTAH, COUNTY OF WEBER, RECORDED AND FILED AT THE
REQUEST OF: _____
ENTRY NO: _____
DATE: _____ TIME: _____
BOOK: _____ PAGE: _____
FEE \$ _____
WEBER COUNTY RECORDER

DATE: _____ TIME: _____ DRAWING NAME: _____
 SERVICE: _____ PLOTTING VIEW: _____
 DESIGNED: _____ PROJ. MOR: _____



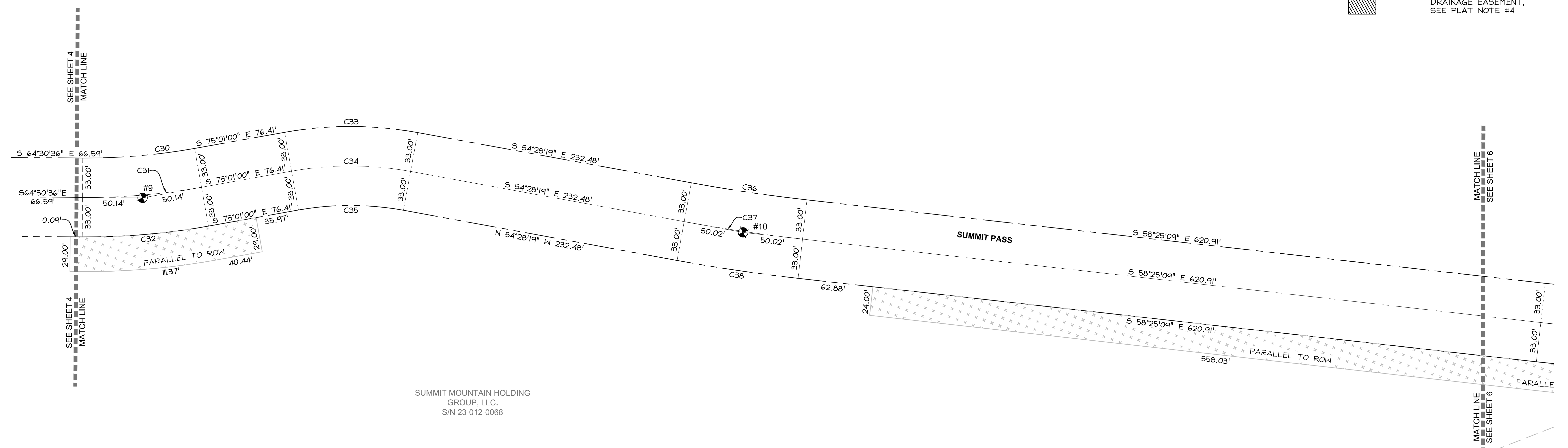
DEDICATION PLAT FOR SUMMIT PASS AND SPRING PARK

LOCATED IN SECTION 1 OF TOWNSHIP 7 NORTH, RANGE 1 EAST
 AND SECTIONS 6, 5, & 8 OF TOWNSHIP 7 NORTH, RANGE 2 EAST,
 SALT LAKE BASE AND MERIDIAN, WEBER COUNTY, UTAH

NOVEMBER 27, 2013

LEGEND	
	SECTION CORNER CALCULATED
	SECTION CORNER FOUND
	ROAD CENTER LINE MONUMENT
	COUNTY LINE
	SECTION LINE
	QUARTER SECTION LINE
	RIGHT OF WAY
	ROAD CENTER LINE
	OWNERSHIP LINE
	SLOPE EASEMENT, SEE PLAT NOTE #1
	DRAINAGE EASEMENT, SEE PLAT NOTE #4

SUMMIT MOUNTAIN HOLDING
 GROUP, LLC.
 S/N 23-012-0068



SUMMIT MOUNTAIN HOLDING
 GROUP, LLC.
 S/N 23-012-0068

WEBER COUNTY STREET MONUMENT TABLE		
#	NORTHING	EASTING
9	3660600.23	1564539.47
10	3660361.02	1564981.38

NOTE: COORDINATES IN TABLE ARE UTAH STATE PLANE NORTH AS DERIVED BY WEBER COUNTY SURVEY AND HAVE NOT BEEN ROTATED TO MATCH THE BASIS OF BEARING OF THIS PLAT

CURVE TABLE					
CURVE #	LENGTH	RADIUS	DELTA	CHORD BEARING	CHORD LENGTH
C30	93.95	512.32	10°30'24"	S 69°45'48" E	93.82'
C31	100.00	545.32	10°30'24"	S 69°45'48" E	99.86'
C32	106.05	578.32	10°30'24"	S 69°45'48" E	105.90'
C33	111.83	311.88	20°32'41"	N 64°44'39" W	111.23'
C34	100.00	278.88	20°32'41"	N 64°44'39" W	99.47'
C35	88.17	245.88	20°32'41"	N 64°44'39" W	87.70'
C36	97.73	1418.47	3°56'51"	S 56°26'44" E	97.71'
C37	100.00	1451.47	3°56'51"	S 56°26'44" E	99.98'
C38	102.27	1484.47	3°56'51"	S 56°26'44" E	102.25'

NOTE:
 ALL SLOPE EASEMENTS ARE PARALLEL TO R.O.W.

DEDICATION PLAT FOR
 SUMMIT PASS AND SPRING PARK

LOCATED IN SECTION 6 OF
 TOWNSHIP 7 NORTH, RANGE 2 EAST, SALT LAKE
 BASE AND MERIDIAN, WEBER COUNTY, UTAH

SUMMIT MOUNTAIN HOLDING
 GROUP, LLC.
 S/N 23-012-030

Sheet 5 of 15

N|V|5
NOLTE VERTICAL FIVE
 5217 SOUTH STATE STREET, SUITE 300 MURRAY, UT 84107
 801.743.1300 TEL. 801.743.0300 FAX WWW.NOLTE.COM

RECORDED #

STATE OF UTAH, COUNTY OF WEBER,
 RECORDED AND FILED AT THE

REQUEST OF: _____

ENTRY NO: _____

DATE: _____ TIME: _____

BOOK: _____ PAGE: _____

FEE \$ _____

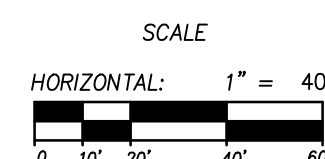
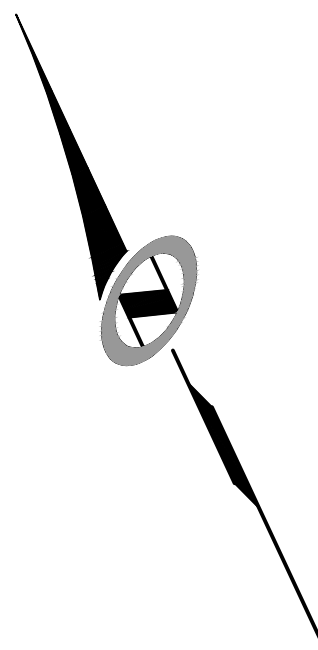
WEBER COUNTY RECORDER

DEDICATION PLAT FOR SUMMIT PASS AND SPRING PARK

LOCATED IN SECTION 1 OF TOWNSHIP 7 NORTH, RANGE 1 EAST
AND SECTIONS 6, 5, & 8 OF TOWNSHIP 7 NORTH, RANGE 2 EAST,
SALT LAKE BASE AND MERIDIAN, WEBER COUNTY, UTAH

NOVEMBER 27, 2013

DATE: _____ TIME: _____ DRAWING NAME: _____
SERVICES: _____ PLOTTING VIEW: _____
PAGE: _____ DESIGNED: _____



SUMMIT MOUNTAIN HOLDING
GROUP, LLC.
S/N 23-012-0068

SUMMIT MOUNTAIN HOLDING
GROUP, LLC.
S/N 23-012-030

SUMMIT MOUNTAIN HOLDING
GROUP, LLC.
S/N 23-012-030

FOUND R/C HJA ENGINEERS
41.79' SOUTH AND 29.52' EAST
FROM ROW "PC" (LS6707)

WEBER COUNTY
STREET MONUMENT TABLE

#	NORTHING	EASTING
11	3659925.89	1565689.21
12	3659708.95	1566169.70

NOTE: COORDINATES IN TABLE ARE UTAH STATE PLANE NORTH AS DERIVED BY WEBER COUNTY SURVEY AND HAVE NOT BEEN ROTATED TO MATCH THE BASIS OF BEARING OF THIS PLAT

LINE TABLE

LINE #	LENGTH	DIRECTION
L1	13.65	S 28°09'18" E
L2	13.65	S 28°09'18" E
L3	13.65	S 28°09'18" E

CURVE TABLE

CURVE #	LENGTH	RADIUS	DELTA	CHORD BEARING	CHORD LENGTH
C39	312.40	1467.00	12°12'05"	S 64°31'12" E	311.81'
C40	319.43	1500.00	12°12'05"	S 64°31'12" E	318.83'
C41	326.46	1533.00	12°12'05"	S 64°31'12" E	325.84'
C42	159.80	233.00	39°17'45"	N 50°58'22" W	156.69'
C43	137.17	200.00	39°17'45"	N 50°58'22" W	134.50'
C44	114.54	167.00	39°17'45"	N 50°58'22" W	112.30'
C45	101.83	1840.50	3°10'12"	N 29°44'24" W	101.81'
C46	100.00	1807.50	3°10'12"	N 29°44'24" W	99.99'
C47	98.17	1774.50	3°10'12"	N 29°44'24" W	98.16'
C48	76.99	393.18	11°13'09"	S 33°45'52" E	76.87'
C49	83.45	426.18	11°13'09"	S 33°45'52" E	83.32'
C50	89.91	459.18	11°13'09"	S 33°45'52" E	89.77'
C51	212.77	402.11	30°19'02"	N 24°15'16" W	210.30'
C52	195.31	369.11	30°19'02"	N 24°15'16" W	193.04'
C53	177.85	336.11	30°19'02"	N 24°15'16" W	175.78'

DRAINAGE EASEMENT
LINE TABLE

LINE #	LENGTH	DIRECTION
L306	26.95	S 58°03'09" W
L307	20.00	N 31°56'51" W
L308	27.05	N 58°03'09" E

LEGEND

	SECTION CORNER CALCULATED
	SECTION CORNER FOUND
	ROAD CENTER LINE MONUMENT
	COUNTY LINE
	SECTION LINE
	QUATER SECTION LINE
	RIGHT OF WAY
	ROAD CENTER LINE
	OWNERSHIP LINE
	SLOPE EASEMENT, SEE PLAT NOTE #1
	DRAINAGE EASEMENT, SEE PLAT NOTE #4

NOTE:
ALL SLOPE EASEMENTS ARE PARALLEL TO R.O.W.

DEDICATION PLAT FOR
SUMMIT PASS AND SPRING PARK

LOCATED IN SECTION 6 OF
TOWNSHIP 7 NORTH, RANGE 2 EAST, SALT LAKE
BASE AND MERIDIAN, WEBER COUNTY, UTAH

Sheet 6 of 15

N|V|S
NOLTE VERTICAL FIVE
5217 SOUTH STATE STREET, SUITE 300 MURRAY, UT 84107
801.743.1300 TEL. 801.743.0300 FAX WWW.NOLTE.COM

RECORDED # _____
STATE OF UTAH, COUNTY OF WEBER,
RECORDED AND FILED AT THE
REQUEST OF: _____
ENTRY NO: _____
DATE: _____ TIME: _____
BOOK: _____ PAGE: _____
FEE \$ _____
WEBER COUNTY RECORDER

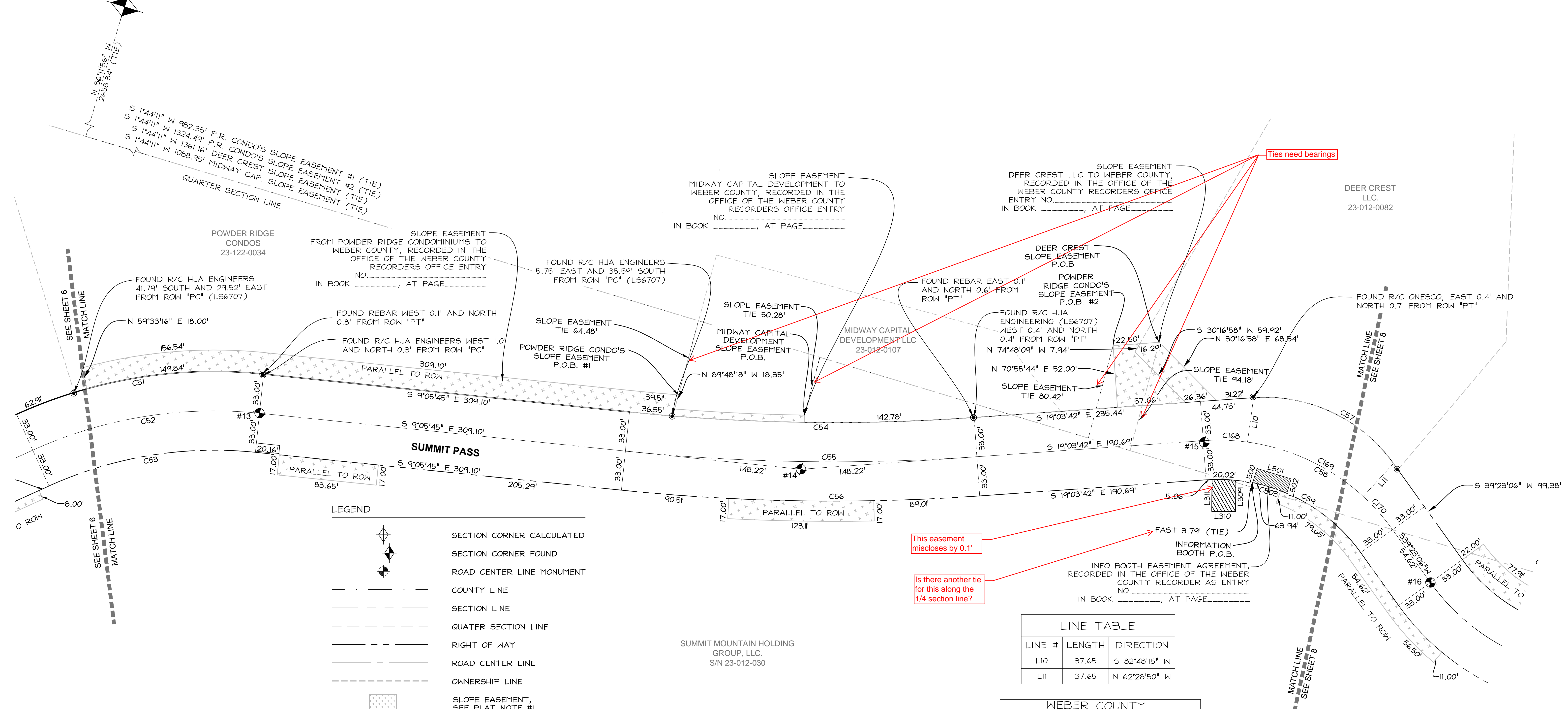
DEDICATION PLAT FOR SUMMIT PASS AND SPRING PARK

LOCATED IN SECTION 1 OF TOWNSHIP 7 NORTH, RANGE 1 EAST AND SECTIONS 6, 5, & 8 OF TOWNSHIP 7 NORTH, RANGE 2 EAST, SALT LAKE BASE AND MERIDIAN, WEBER COUNTY, UTAH

NOVEMBER 27, 2013

DATE: _____ TIME: _____ DRAWING NAME: _____ PLOTTING VIEW: _____ SCALE: _____ SHEET: _____ PATH: _____ PROJ. MGR.: _____

EAST QUARTER CORNER SECTION 6, TOWNSHIP 7 NORTH, RANGE 2 EAST SALT LAKE BASE AND MERIDIAN FOUND 1941 GLO BRASS CAP



LEGEND

- SECTION CORNER CALCULATED
- SECTION CORNER FOUND
- ROAD CENTER LINE MONUMENT
- COUNTY LINE
- SECTION LINE
- QUATER SECTION LINE
- RIGHT OF WAY
- ROAD CENTER LINE
- OWNERSHIP LINE
- SLOPE EASEMENT, SEE PLAT NOTE #1
- DRAINAGE EASEMENT, SEE PLAT NOTE #4

SUMMIT MOUNTAIN HOLDING GROUP, LLC. S/N 23-012-030

LINE TABLE

LINE #	LENGTH	DIRECTION
L10	37.65	S 82°48'15" W
L11	37.65	N 62°28'50" W

WEBER COUNTY STREET MONUMENT TABLE

#	NORTHING	EASTING
13	3659204.42	1566471.50
14	3658753.06	1566543.77
15	3658432.87	1566654.40
16	3658259.95	1566623.41

NOTE: COORDINATES IN TABLE ARE UTAH STATE PLANE NORTH AS DERIVED BY WEBER COUNTY SURVEY AND HAVE NOT BEEN ROTATED TO MATCH THE BASIS OF BEARING OF THIS PLAT

CURVE TABLE

CURVE #	LENGTH	RADIUS	DELTA	CHORD BEARING	CHORD LENGTH
C51	212.77	402.11	30°19'02"	N 24°15'16" W	210.30'
C52	195.31	369.11	30°19'02"	N 24°15'16" W	193.04'
C53	177.85	336.11	30°19'02"	N 24°15'16" W	175.78'
C54	289.95	1667.00	9°57'57"	S 14°04'43" E	289.59'
C55	295.69	1700.00	9°57'57"	S 14°04'43" E	295.32'
C56	301.43	1733.00	9°57'57"	S 14°04'43" E	301.05'
C57	135.67	133.00	58°26'48"	N 10°09'42" E	129.87'
C58	183.62	180.00	58°26'48"	N 10°09'42" E	175.76'
C59	149.95	147.00	58°26'48"	N 10°09'42" E	143.54'
C168	37.28	180.00	11°51'57"	N 13°07'43" W	37.21'
C169	109.06	180.00	34°42'54"	N 10°09'42" E	107.40'
C170	37.28	180.00	11°51'57"	N 33°27'08" E	37.21'

INFO BOOTH LINE TABLE

LINE #	LENGTH	DIRECTION
L500	12.57	S 88°02'35" E
L501	30.00	S 01°57'25" W
L502	12.67	S 88°02'35" E

INFO BOOTH CURVE TABLE

CURVE #	LENGTH	RADIUS	DELTA	CHORD BEARING	CHORD LENGTH
C503	30.05	147.00	11°42'48"	S 02°08'22" W	30.00'

NOTE: ALL SLOPE EASEMENTS ARE PARALLEL TO R.O.W.

DEDICATION PLAT FOR SUMMIT PASS AND SPRING PARK

LOCATED IN SECTION 6 OF TOWNSHIP 7 NORTH, RANGE 2 EAST, SALT LAKE BASE AND MERIDIAN, WEBER COUNTY, UTAH

Sheet 7 of 15

N|V|5
NOLTE VERTICAL FIVE
 5217 SOUTH STATE STREET, SUITE 300 MURRAY, UT 84107
 801.743.1300 TEL. 801.743.0300 FAX WWW.NOLTE.COM

RECORDED #

STATE OF UTAH, COUNTY OF WEBER, RECORDED AND FILED AT THE REQUEST OF: _____

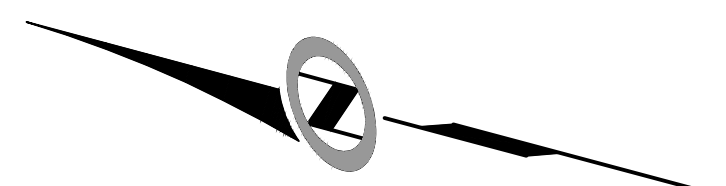
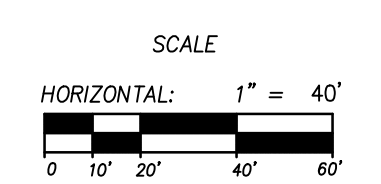
ENTRY NO: _____

DATE: _____ TIME: _____

BOOK: _____ PAGE: _____

FEE \$ _____

WEBER COUNTY RECORDER

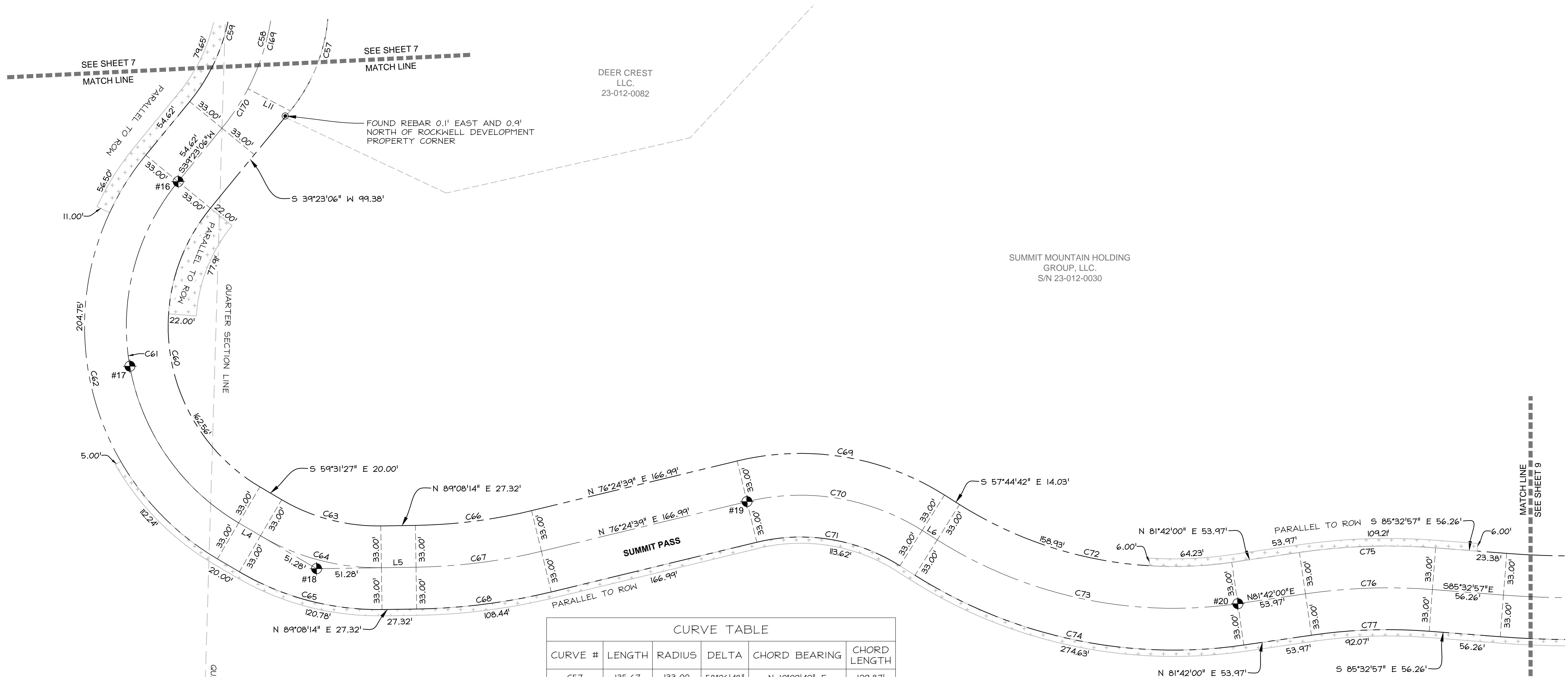


DEDICATION PLAT FOR SUMMIT PASS AND SPRING PARK

LOCATED IN SECTION 1 OF TOWNSHIP 7 NORTH, RANGE 1 EAST
AND SECTIONS 6, 5, & 8 OF TOWNSHIP 7 NORTH, RANGE 2 EAST,
SALT LAKE BASE AND MERIDIAN, WEBER COUNTY, UTAH

NOVEMBER 27, 2013

DATE: _____ TIME: _____ DRAWING NAME: _____
SERVER: _____ SPACE: _____ PLOTTING VIEW: _____
PATH: _____ ESCALATE: _____ PROJ. WDR: _____



DEER CREST
LLC.
23-012-0082

SUMMIT MOUNTAIN HOLDING
GROUP, LLC.
S/N 23-012-0030

SUMMIT MOUNTAIN HOLDING
GROUP, LLC.
S/N 23-012-0030

CURVE TABLE					
CURVE #	LENGTH	RADIUS	DELTA	CHORD BEARING	CHORD LENGTH
C57	135.67	133.00	58°26'48"	N 10°09'42" E	129.87'
C58	183.62	180.00	58°26'48"	N 10°09'42" E	175.76'
C59	149.95	147.00	58°26'48"	N 10°09'42" E	143.54'
C60	253.77	147.00	98°54'34"	S 10°04'10" E	223.41'
C61	310.73	180.00	98°54'34"	S 10°04'10" E	273.56'
C62	367.70	213.00	98°54'33"	S 10°04'10" E	323.71'
C63	81.95	149.83	31°20'19"	S 75°11'36" E	80.93'
C64	100.00	182.83	31°20'19"	S 75°11'36" E	98.76'
C65	118.05	215.83	31°20'19"	S 75°11'36" E	116.58'
C66	92.67	417.21	12°43'35"	N 82°46'27" E	92.48'
C67	100.00	450.21	12°43'35"	N 82°46'27" E	99.79'
C68	107.33	483.21	12°43'35"	N 82°46'27" E	107.11'
C69	170.43	213.00	45°50'39"	N 80°40'01" W	165.92'
C70	144.02	180.00	45°50'39"	N 80°40'01" W	140.21'
C71	117.62	147.00	45°50'39"	N 80°40'01" W	114.51'
C72	224.38	317.00	40°33'19"	S 78°01'21" E	219.72'
C73	247.74	350.00	40°33'19"	S 78°01'21" E	242.60'
C74	271.10	383.00	40°33'19"	S 78°01'21" E	265.47'
C75	107.87	484.71	12°45'03"	S 88°04'31" W	107.65'
C76	100.53	451.71	12°45'03"	S 88°04'31" W	100.32'
C77	93.18	418.71	12°45'03"	S 88°04'31" W	92.99'
C170	37.28	180.00	11°51'57"	N 33°27'08" E	37.21'

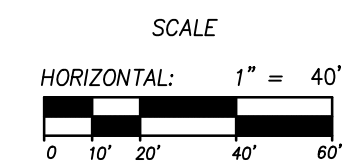
LINE TABLE		
LINE #	LENGTH	DIRECTION
L4	20.00	N 59°31'27" W
L5	27.32	S 89°08'14" W
L6	14.03	S 57°44'42" E

WEBER COUNTY STREET MONUMENT TABLE		
#	NORTHING	EASTING
16	3658259.95	1566623.41
17	3658072.13	1566550.68
18	3657912.39	1566697.98
19	3657965.33	1567037.75
20	3657884.80	1567425.11

NOTE: COORDINATES IN TABLE ARE UTAH STATE PLANE NORTH AS DERIVED BY WEBER COUNTY SURVEY AND HAVE NOT BEEN ROTATED TO MATCH THE BASIS OF BEARING OF THIS PLAT

LEGEND

- SECTION CORNER CALCULATED
- SECTION CORNER FOUND
- ROAD CENTER LINE MONUMENT
- COUNTY LINE
- SECTION LINE
- QUARTER SECTION LINE
- RIGHT OF WAY
- ROAD CENTER LINE
- OWNERSHIP LINE
- SLOPE EASEMENT, SEE PLAT NOTE #1
- DRAINAGE EASEMENT, SEE PLAT NOTE #4



Sheet 8 of 15

NOTE:
ALL SLOPE EASEMENTS ARE PARALLEL TO R.O.W.

DEDICATION PLAT FOR
SUMMIT PASS AND SPRING PARK

LOCATED IN SECTION 6 OF
TOWNSHIP 7 NORTH, RANGE 2 EAST, SALT LAKE
BASE AND MERIDIAN, WEBER COUNTY, UTAH

RECORDED #
STATE OF UTAH, COUNTY OF WEBER,
RECORDED AND FILED AT THE
REQUEST OF: _____
ENTRY NO: _____
DATE: _____ TIME: _____
BOOK: _____ PAGE: _____
FEE \$ _____

N|V|5
NOLTE VERTICALFIVE
5217 SOUTH STATE STREET, SUITE 300 MURRAY, UT 84107
801.743.1300 TEL. 801.743.0300 FAX WWW.NOLTE.COM

WEBER COUNTY RECORDER

DEDICATION PLAT FOR SUMMIT PASS AND SPRING PARK

LOCATED IN SECTION 1 OF TOWNSHIP 7 NORTH, RANGE 1 EAST AND SECTIONS 6, 5, & 8 OF TOWNSHIP 7 NORTH, RANGE 2 EAST, SALT LAKE BASE AND MERIDIAN, WEBER COUNTY, UTAH

NOVEMBER 27, 2013

DATE: _____ TIME: _____ DRAWING NAME: _____ PLOTTING VIEW: _____ SCALE: _____ SHEET: _____ TOTAL SHEETS: _____

SUMMIT MOUNTAIN HOLDING GROUP, LLC. S/N 16-001-0009

See legend

EAST QUARTER CORNER SECTION 6, TOWNSHIP 7 NORTH, RANGE 2 EAST SALT LAKE BASE AND MERIDIAN FOUND 1941 GLO BRASS CAP

SUMMIT MOUNTAIN HOLDING GROUP, LLC. S/N 23-012-0030

WEBER STATE UNIVERSITY 23-012-0109

BLANKET EASEMENT FROM WEBER STATE UNIVERSITY TO WEBER COUNTY FOR THE INSTALLATION OF A ROAD AND MAINTENANCE OF ALL SLOPES. RECORDED IN THE OFFICE OF THE WEBER COUNTY RECORDER'S OFFICE AS ENTRY NO. _____ AT PAGE _____

EASEMENT FROM WEBER STATE UNIVERSITY TO SUMMIT MOUNTAIN HOLDING GROUP FOR THE CONSTRUCTION OF A ROAD. RECORDED IN THE OFFICE OF THE WEBER COUNTY RECORDER'S OFFICE AS ENTRY NO. 2646631

100.00' SKI LIFT EASEMENT, TO BE RECORDED IN THE OFFICE OF THE WEBER COUNTY RECORDER'S OFFICE. As entry #... Book & Page

SUMMIT MOUNTAIN HOLDING GROUP, LLC. S/N 23-012-0054

WEBER COUNTY STREET MONUMENT TABLE

#	NORTHING	EASTING
21	3657936.21	1567940.16
22	3657959.06	1568245.00
23	3658066.23	1568562.03

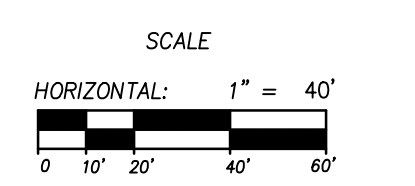
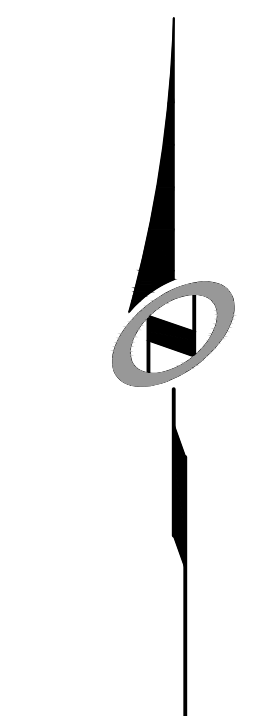
NOTE: COORDINATES IN TABLE ARE UTAH STATE PLANE NORTH AS DERIVED BY WEBER COUNTY SURVEY AND HAVE NOT BEEN ROTATED TO MATCH THE BASIS OF BEARING OF THIS PLAT

CURVE TABLE

CURVE #	LENGTH	RADIUS	DELTA	CHORD BEARING	CHORD LENGTH
C78	297.02	667.00	25°30'52"	N 81°41'37" E	294.57'
C79	311.72	700.00	25°30'52"	N 81°41'37" E	309.15'
C80	326.41	733.00	25°30'52"	N 81°41'37" E	323.72'
C81	130.86	233.00	32°10'44"	S 85°01'33" W	129.15'
C82	112.33	200.00	32°10'44"	S 85°01'33" W	110.86'
C83	93.79	167.00	32°10'44"	S 85°01'33" W	92.56'
C84	112.84	217.00	29°47'36"	N 86°13'07" E	111.57'
C85	130.00	250.00	29°47'36"	N 86°13'07" E	128.54'
C86	147.16	283.00	29°47'36"	N 86°13'07" E	145.50'
C87	194.11	1033.00	10°45'58"	S 76°42'19" W	193.82'
C88	187.90	1000.00	10°45'58"	S 76°42'19" W	187.63'
C89	181.70	967.00	10°45'58"	S 76°42'19" W	181.44'
C90	107.74	459.15	13°26'42"	S 88°48'39" W	107.50'
C91	100.00	426.15	13°26'42"	S 88°48'39" W	99.77'
C92	92.26	393.15	13°26'42"	S 88°48'39" W	92.04'
C504	70.37	1049.43	3°50'31"	N 81°23'47" W	70.36'

LEGEND

- SECTION CORNER CALCULATED
- SECTION CORNER FOUND
- ROAD CENTER LINE MONUMENT
- COUNTY LINE
- SECTION LINE
- QUARTER SECTION LINE
- RIGHT OF WAY
- ROAD CENTER LINE
- OWNERSHIP LINE
- SLOPE EASEMENT, SEE PLAT NOTE #1
- DRAINAGE EASEMENT, SEE PLAT NOTE #4



NOTE: ALL SLOPE EASEMENTS ARE PARALLEL TO R.O.W.

DEDICATION PLAT FOR SUMMIT PASS AND SPRING PARK

LOCATED IN SECTION 6 OF TOWNSHIP 7 NORTH, RANGE 2 EAST, SALT LAKE BASE AND MERIDIAN, WEBER COUNTY, UTAH

Sheet 9 of 15

N|V|5
NOLTE VERTICAL FIVE

5217 SOUTH STATE STREET, SUITE 300 MURRAY, UT 84107
801.743.1300 TEL. 801.743.0300 FAX WWW.NOLTE.COM

RECORDED #
STATE OF UTAH, COUNTY OF WEBER, RECORDED AND FILED AT THE
REQUEST OF: _____
ENTRY NO: _____
DATE: _____ TIME: _____
BOOK: _____ PAGE: _____
FEE \$ _____
WEBER COUNTY RECORDER

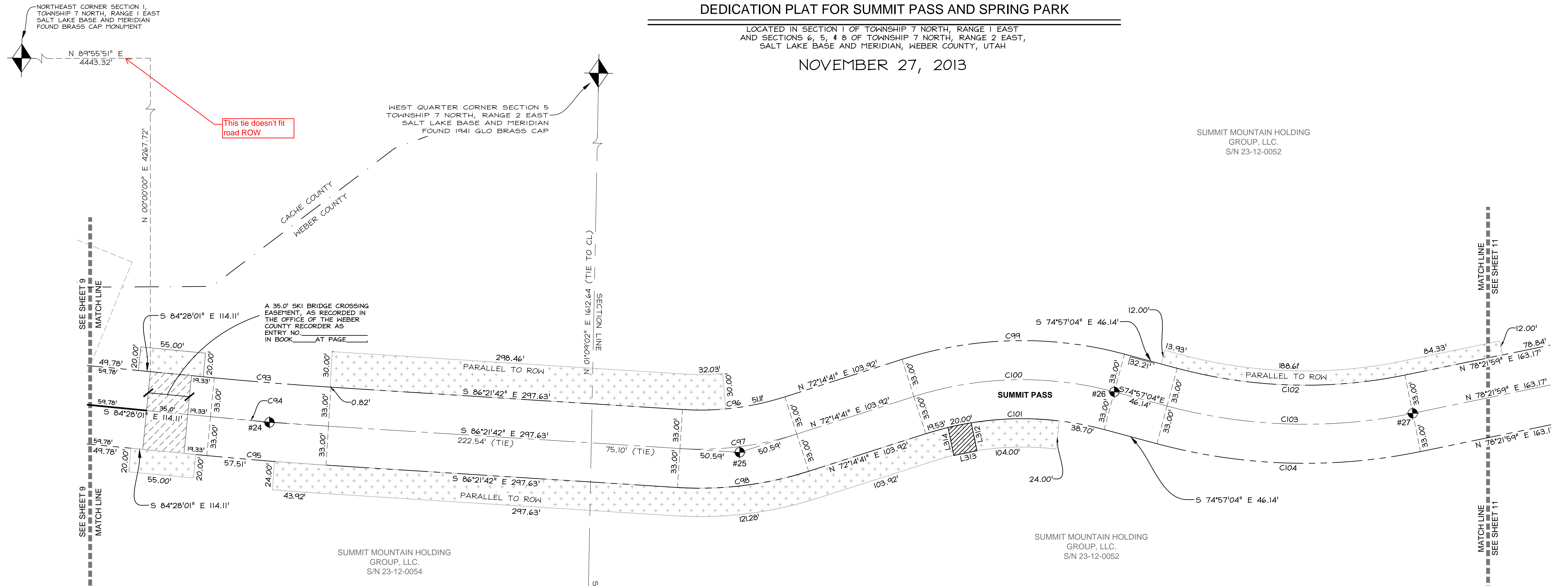
DEDICATION PLAT FOR SUMMIT PASS AND SPRING PARK

LOCATED IN SECTION 1 OF TOWNSHIP 7 NORTH, RANGE 1 EAST AND SECTIONS 6, 5, & 8 OF TOWNSHIP 7 NORTH, RANGE 2 EAST, SALT LAKE BASE AND MERIDIAN, WEBER COUNTY, UTAH

NOVEMBER 27, 2013

SUMMIT MOUNTAIN HOLDING GROUP, LLC.
S/N 23-12-0052

DATE: _____ TIME: _____ DRAWING NAME: _____ PLOTTING VIEW: _____ SCALE: _____ FROM: _____ TO: _____



LEGEND

	SECTION CORNER CALCULATED
	SECTION CORNER FOUND
	ROAD CENTER LINE MONUMENT
	COUNTY LINE
	SECTION LINE
	QUARTER SECTION LINE
	RIGHT OF WAY
	ROAD CENTER LINE
	OWNERSHIP LINE
	SLOPE EASEMENT, SEE PLAT NOTE #1
	DRAINAGE EASEMENT, SEE PLAT NOTE #4

WEBER COUNTY STREET MONUMENT TABLE

#	NORTHING	EASTING
24	3658079.47	1569019.21
25	3658054.21	1569416.45
26	3658105.31	1569732.83
27	3658087.15	1569984.86

NOTE: COORDINATES IN TABLE ARE UTAH STATE PLANE NORTH AS DERIVED BY WEBER COUNTY SURVEY AND HAVE NOT BEEN ROTATED TO MATCH THE BASIS OF BEARING OF THIS PLAT

SKI EASEMENT LINE TABLE

LINE #	LENGTH	DIRECTION
L400	20.00	N 05°31'59" E
L401	55.00	S 84°28'01" E
L402	20.00	S 05°31'59" W
L403	55.00	S 84°28'01" E
L404	20.00	N 05°31'59" E
L405	55.00	S 84°28'01" E
L406	20.00	S 05°31'59" W
L407	55.00	N 84°28'01" W

CURVE TABLE

CURVE #	LENGTH	RADIUS	DELTA	CHORD BEARING	CHORD LENGTH
C93	98.91	2990.76	1°53'41"	S 85°24'51" E	98.90'
C94	100.00	3023.76	1°53'41"	S 85°24'51" E	100.00'
C95	101.09	3056.76	1°53'41"	S 85°24'51" E	101.09'
C96	87.68	234.82	21°23'37"	N 82°56'30" E	87.17'
C97	100.00	267.82	21°23'37"	N 82°56'30" E	99.42'
C98	112.32	300.82	21°23'37"	N 82°56'30" E	111.67'
C99	190.65	333.00	32°48'14"	S 88°38'49" W	188.06'
C100	171.76	300.00	32°48'14"	S 88°38'49" W	169.42'
C101	152.87	267.00	32°48'14"	S 88°38'49" W	150.79'
C102	194.19	417.00	26°40'57"	S 88°17'33" E	192.44'
C103	209.56	450.00	26°40'57"	S 88°17'33" E	207.67'
C104	224.93	483.00	26°40'57"	S 88°17'33" E	222.90'

DRAINAGE EASEMENT LINE TABLE

LINE #	LENGTH	DIRECTION
L312	24.08	N 11°40'20" W
L313	20.00	N 78°19'40" E
L314	24.16	S 11°40'20" E

NOTE: ALL SLOPE EASEMENTS ARE PARALLEL TO R.O.W.

DEDICATION PLAT FOR SUMMIT PASS AND SPRING PARK

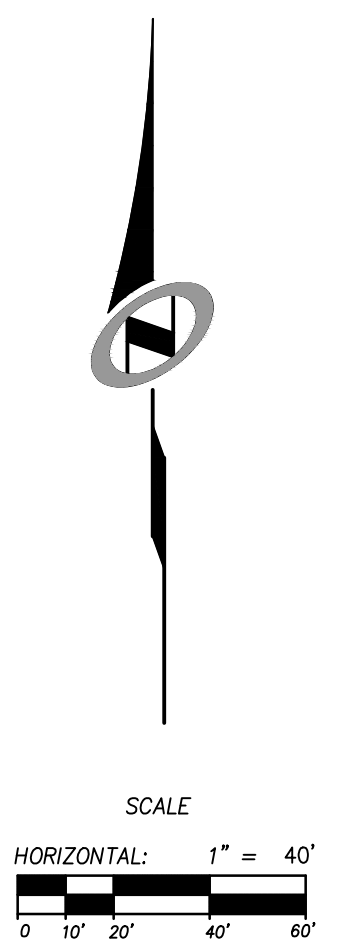
LOCATED IN SECTION 6 & 5 OF TOWNSHIP 7 NORTH, RANGE 2 EAST, SALT LAKE BASE AND MERIDIAN, WEBER COUNTY, UTAH

SOUTHWEST CORNER SECTION 5 TOWNSHIP 7 NORTH, RANGE 2 EAST SALT LAKE BASE AND MERIDIAN (CALCULATED)

Sheet 10 of 15

N|V|5
NOLTE VERTICAL FIVE
5217 SOUTH STATE STREET, SUITE 300 MURRAY, UT 84107
801.743.1300 TEL. 801.743.0300 FAX WWW.NOLTE.COM

RECORDED #
STATE OF UTAH, COUNTY OF WEBER, RECORDED AND FILED AT THE REQUEST OF: _____
ENTRY NO: _____
DATE: _____ TIME: _____
BOOK: _____ PAGE: _____
FEE \$ _____
WEBER COUNTY RECORDER



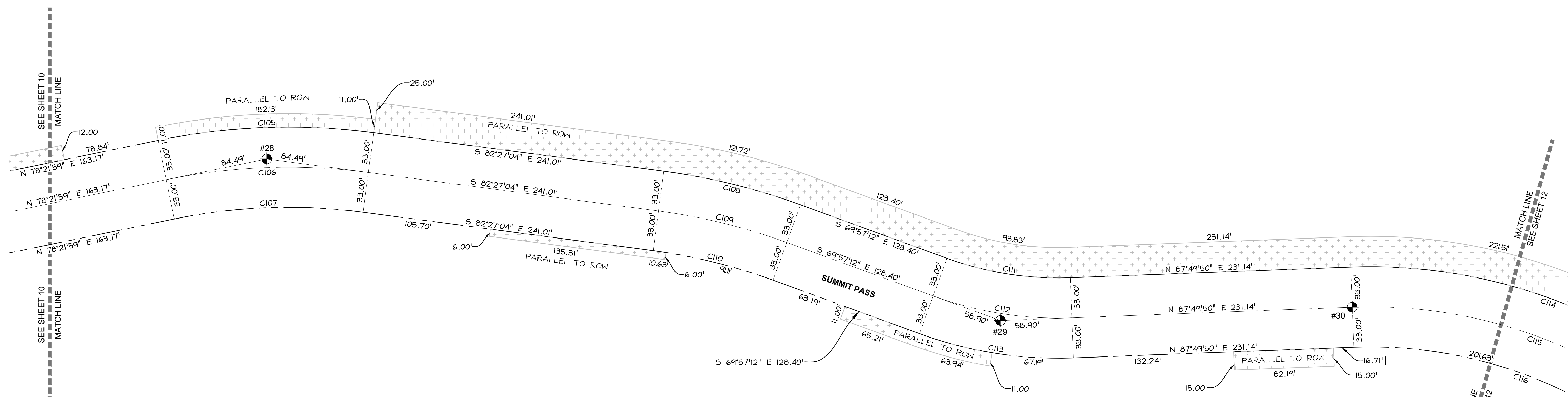
DATE: _____ TIME: _____ DRAWING NAME: _____
 SERVER: _____ SPACE: _____ PLOTTING VIEW: _____
 PATH: _____ ESCALATOR: _____ PROJ. MGR: _____

DEDICATION PLAT FOR SUMMIT PASS AND SPRING PARK

LOCATED IN SECTION 1 OF TOWNSHIP 7 NORTH, RANGE 1 EAST
 AND SECTIONS 6, 5, & 8 OF TOWNSHIP 7 NORTH, RANGE 2 EAST,
 SALT LAKE BASE AND MERIDIAN, WEBER COUNTY, UTAH

NOVEMBER 27, 2013

SUMMIT MOUNTAIN HOLDING
 GROUP, LLC.
 S/N 23-12-0052



LEGEND

- SECTION CORNER CALCULATED
- SECTION CORNER FOUND
- ROAD CENTER LINE MONUMENT
- COUNTY LINE
- SECTION LINE
- QUATER SECTION LINE
- RIGHT OF WAY
- ROAD CENTER LINE
- OWNERSHIP LINE
- SLOPE EASEMENT,
SEE PLAT NOTE #1
- DRAINAGE EASEMENT,
SEE PLAT NOTE #4

SUMMIT MOUNTAIN HOLDING
 GROUP, LLC.
 S/N 23-12-0052

**WEBER COUNTY
 STREET MONUMENT TABLE**

#	NORTHING	EASTING
28	3658137.07	1570227.32
29	3658004.20	1570831.39
30	3658015.18	1571121.09

NOTE: COORDINATES IN TABLE ARE UTAH STATE PLANE NORTH AS DERIVED BY WEBER COUNTY SURVEY AND HAVE NOT BEEN ROTATED TO MATCH THE BASIS OF BEARING OF THIS PLAT

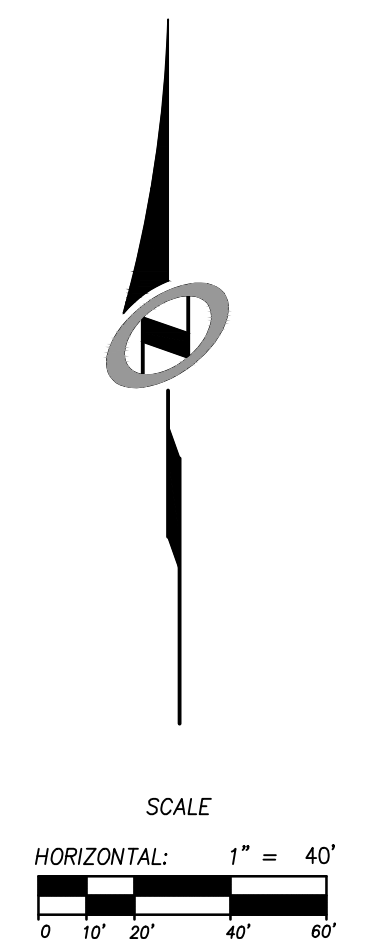
CURVE TABLE

CURVE #	LENGTH	RADIUS	DELTA	CHORD BEARING	CHORD LENGTH
C105	178.45	533.00	19°10'57"	S 87°57'27" W	177.61'
C106	167.40	500.00	19°10'57"	S 87°57'27" W	166.62'
C107	156.35	467.00	19°10'57"	S 87°57'27" W	155.62'
C108	116.26	533.00	12°29'53"	N 76°12'08" W	116.03'
C109	109.07	500.00	12°29'53"	N 76°12'08" W	108.85'
C110	101.87	467.00	12°29'53"	N 76°12'08" W	101.66'
C111	103.53	267.00	22°12'58"	S 81°03'41" E	102.88'
C112	116.32	300.00	22°12'58"	S 81°03'41" E	115.60'
C113	129.12	333.00	22°12'58"	S 81°03'41" E	128.31'

NOTE:
 ALL SLOPE EASEMENTS ARE PARALLEL TO R.O.W.

**DEDICATION PLAT FOR
 SUMMIT PASS AND SPRING PARK**

LOCATED IN SECTION 5 OF
 TOWNSHIP 7 NORTH, RANGE 2 EAST, SALT LAKE
 BASE AND MERIDIAN, WEBER COUNTY, UTAH



Sheet 11 of 15

N|V|5
NOLTE VERTICALFIVE

5217 SOUTH STATE STREET, SUITE 300 MURRAY, UT 84107
 801.743.1300 TEL. 801.743.0300 FAX WWW.NOLTE.COM

RECORDED #

STATE OF UTAH, COUNTY OF WEBER,
 RECORDED AND FILED AT THE
 REQUEST OF: _____
 ENTRY NO: _____
 DATE: _____ TIME: _____
 BOOK: _____ PAGE: _____
 FEE \$ _____

WEBER COUNTY RECORDER

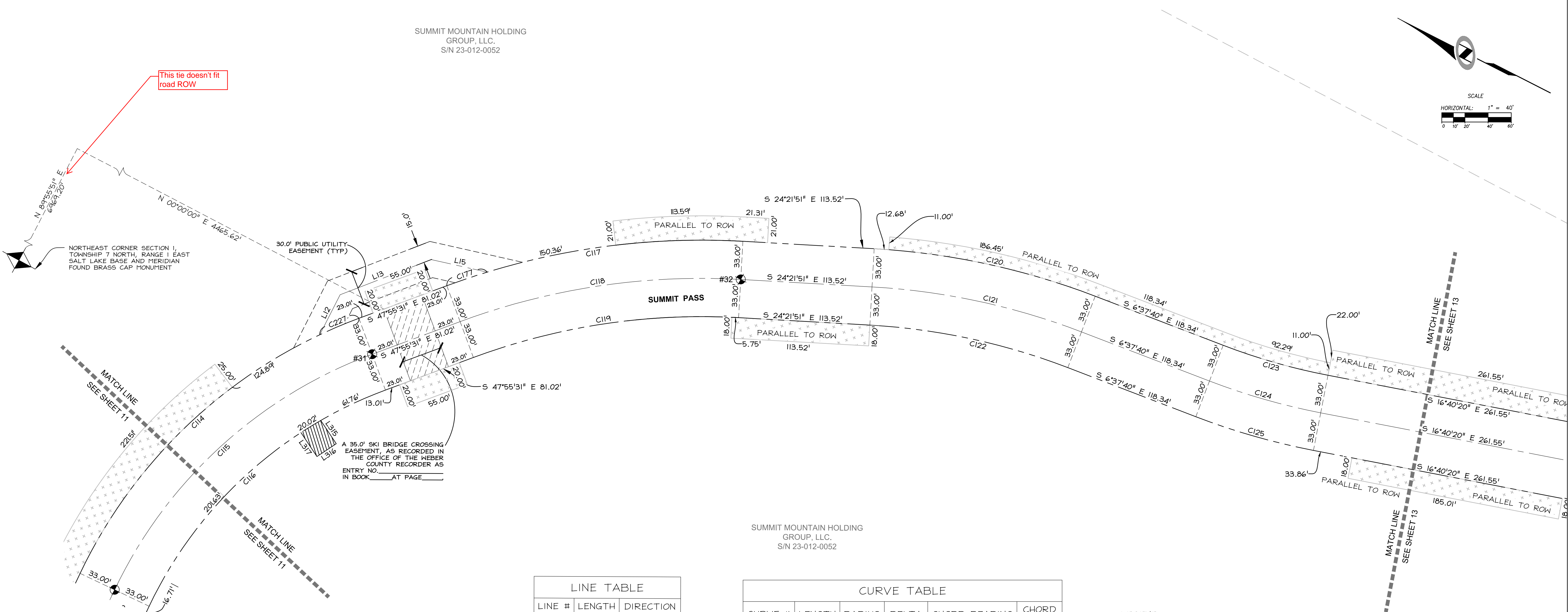
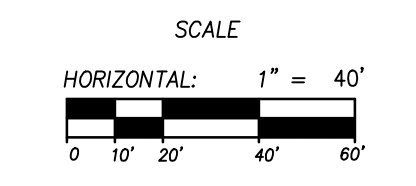
DEDICATION PLAT FOR SUMMIT PASS AND SPRING PARK

LOCATED IN SECTION 1 OF TOWNSHIP 7 NORTH, RANGE 1 EAST
AND SECTIONS 6, 5, & 8 OF TOWNSHIP 7 NORTH, RANGE 2 EAST,
SALT LAKE BASE AND MERIDIAN, WEBER COUNTY, UTAH

NOVEMBER 27, 2013

SUMMIT MOUNTAIN HOLDING
GROUP, LLC.
S/N 23-012-0052

DATE: _____ TIME: _____ DRAWING NAME: _____ PLOTTING VIEW: _____ SCALE: _____ PROJ. WGS: _____



SUMMIT MOUNTAIN HOLDING
GROUP, LLC.
S/N 23-012-0052

LINE TABLE		
LINE #	LENGTH	DIRECTION
L12	38.68	N 89°18'01" E
L13	84.35	S 48°41'59" E
L15	49.48	S 14°56'59" E

CURVE TABLE					
CURVE #	LENGTH	RADIUS	DELTA	CHORD BEARING	CHORD LENGTH
C114	334.37	433.00	44°14'39"	N 70°02'50" W	326.12'
C115	308.88	400.00	44°14'39"	N 70°02'50" W	301.26'
C116	283.40	367.00	44°14'39"	N 70°02'50" W	276.41'
C117	260.30	633.00	23°33'40"	N 36°08'41" W	258.47'
C118	246.73	600.00	23°33'40"	N 36°08'41" W	245.00'
C119	233.16	567.00	23°33'40"	N 36°08'41" W	231.52'
C120	195.95	633.00	17°44'11"	N 15°29'46" W	195.17'
C121	185.74	600.00	17°44'11"	N 15°29'46" W	184.99'
C122	175.52	567.00	17°44'11"	N 15°29'46" W	174.82'
C123	94.21	537.42	10°02'40"	S 11°39'00" E	94.09'
C124	100.00	570.42	10°02'40"	S 11°39'00" E	99.87'
C125	105.79	603.42	10°02'40"	S 11°39'00" E	105.65'
C177	36.71	633.00	3°19'23"	N 46°15'49" W	36.71'
C227	36.58	433.03	4°50'25"	N 50°20'44" W	36.57'

WEBER COUNTY STREET MONUMENT TABLE		
#	NORTHING	EASTING
31	3657912.42	1571404.15
32	3657660.40	1571608.70

NOTE: COORDINATES IN TABLE ARE UTAH STATE PLANE NORTH AS DERIVED BY WEBER COUNTY SURVEY AND HAVE NOT BEEN ROTATED TO MATCH THE BASIS OF BEARING OF THIS PLAT

DRAINAGE EASEMENT LINE TABLE		
LINE #	LENGTH	DIRECTION
L315	24.10	S 28°37'53" W
L316	20.00	N 61°22'07" W
L317	24.88	N 28°37'53" E

LEGEND	
	SECTION CORNER CALCULATED
	SECTION CORNER FOUND
	ROAD CENTER LINE MONUMENT
	COUNTY LINE
	SECTION LINE
	QUARTER SECTION LINE
	RIGHT OF WAY
	ROAD CENTER LINE
	OWNERSHIP LINE
	SLOPE EASEMENT, SEE PLAT NOTE #1
	DRAINAGE EASEMENT, SEE PLAT NOTE #4

NOTE:
ALL SLOPE EASEMENTS ARE PARALLEL TO R.O.W.

**DEDICATION PLAT FOR
SUMMIT PASS AND SPRING PARK**

LOCATED IN SECTION 5 OF
TOWNSHIP 7 NORTH, RANGE 2 EAST, SALT LAKE
BASE AND MERIDIAN, WEBER COUNTY, UTAH

Sheet 12 of 15

N|V|5

NOLTE VERTICALFIVE

5217 SOUTH STATE STREET, SUITE 300 MURRAY, UT 84107
801.743.1300 TEL. 801.743.0300 FAX WWW.NOLTE.COM

RECORDED #

STATE OF UTAH, COUNTY OF WEBER,
RECORDED AND FILED AT THE

REQUEST OF: _____

ENTRY NO: _____

DATE: _____ TIME: _____

BOOK: _____ PAGE: _____

FEE \$ _____

WEBER COUNTY RECORDER

DEDICATION PLAT FOR SUMMIT PASS AND SPRING PARK

LOCATED IN SECTION 1 OF TOWNSHIP 7 NORTH, RANGE 1 EAST
AND SECTIONS 6, 5, & 8 OF TOWNSHIP 7 NORTH, RANGE 2 EAST,
SALT LAKE BASE AND MERIDIAN, WEBER COUNTY, UTAH

NOVEMBER 27, 2013

SUMMIT MOUNTAIN HOLDING
GROUP, LLC.
S/N 23-012-0029

SUMMIT MOUNTAIN HOLDING
GROUP, LLC.
S/N 23-012-0052

SUMMIT MOUNTAIN HOLDING
GROUP, LLC.
S/N 23-012-0032

SOUTH QUARTER CORNER SECTION 5,
TOWNSHIP 7 NORTH, RANGE 2 EAST
SALT LAKE BASE AND MERIDIAN
FOUND 1944 GLO BRASS CAP

SOUTH QUARTER CORNER SECTION 6
TOWNSHIP 7 NORTH, RANGE 2 EAST
SALT LAKE BASE AND MERIDIAN
(CALCULATED)

LEGEND

- SECTION CORNER CALCULATED
- SECTION CORNER FOUND
- ROAD CENTER LINE MONUMENT
- COUNTY LINE
- SECTION LINE
- QUARTER SECTION LINE
- RIGHT OF WAY
- ROAD CENTER LINE
- OWNERSHIP LINE
- SLOPE EASEMENT, SEE PLAT NOTE #1
- DRAINAGE EASEMENT, SEE PLAT NOTE #4

WEBER COUNTY
STREET MONUMENT TABLE

#	NORTHING	EASTING
33	3656913.14	1571813.73
34	3656700.02	1571954.62
35	3656487.50	1572355.50

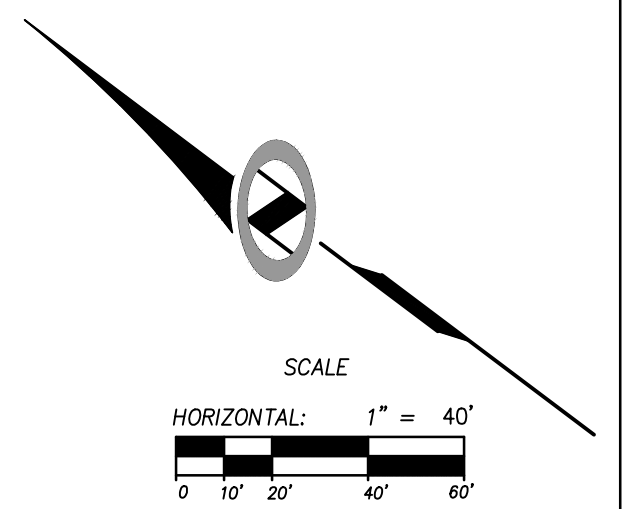
NOTE: COORDINATES IN TABLE ARE UTAH STATE PLANE NORTH AS DERIVED BY WEBER COUNTY SURVEY AND HAVE NOT BEEN ROTATED TO MATCH THE BASIS OF BEARING OF THIS PLAT

CURVE TABLE

CURVE #	LENGTH	RADIUS	DELTA	CHORD BEARING	CHORD LENGTH
C126	164.65	367.00	25°42'21"	S 29°31'31" E	163.28'
C127	179.46	400.00	25°42'21"	S 29°31'31" E	177.96'
C128	194.27	433.00	25°42'21"	S 29°31'31" E	192.64'
C129	154.36	367.00	24°05'53"	S 54°25'37" E	153.22'
C130	168.24	400.00	24°05'53"	S 54°25'37" E	167.00'
C131	182.11	433.00	24°05'53"	S 54°25'37" E	180.78'
C132	135.97	433.00	17°59'29"	N 57°28'49" W	135.41'
C133	125.60	400.00	17°59'29"	N 57°28'49" W	125.09'
C134	115.24	367.00	17°59'29"	N 57°28'49" W	114.77'
C135	225.81	367.00	35°15'14"	S 66°06'41" E	222.27'
C136	246.12	400.00	35°15'14"	S 66°06'41" E	242.25'
C137	266.42	433.00	35°15'14"	S 66°06'41" E	262.24'

DRAINAGE EASEMENT
LINE TABLE

LINE #	LENGTH	DIRECTION
L318	42.10	S 52°06'01" W
L319	20.00	S 37°53'59" E
L320	42.15	S 52°06'01" W



NOTE:
ALL SLOPE EASEMENTS ARE PARALLEL TO R.O.W.

**DEDICATION PLAT FOR
SUMMIT PASS AND SPRING PARK**

LOCATED IN SECTION 5 & 8 OF
TOWNSHIP 7 NORTH, RANGE 2 EAST, SALT LAKE
BASE AND MERIDIAN, WEBER COUNTY, UTAH

Sheet 13 of 15

N|V|5
NOLTE VERTICAL FIVE

5217 SOUTH STATE STREET, SUITE 300 MURRAY, UT 84107
801.743.1300 TEL. 801.743.0300 FAX WWW.NOLTE.COM

RECORDED #

STATE OF UTAH, COUNTY OF WEBER,
RECORDED AND FILED AT THE
REQUEST OF: _____
ENTRY NO: _____
DATE: _____ TIME: _____
BOOK: _____ PAGE: _____
FEE \$ _____

WEBER COUNTY RECORDER

DATE: _____ TIME: _____ DRAWING NAME: _____ PLOTTING VIEW: _____ SERVER: _____ SPACE: _____ PATH: _____ PROJ. WDR: _____

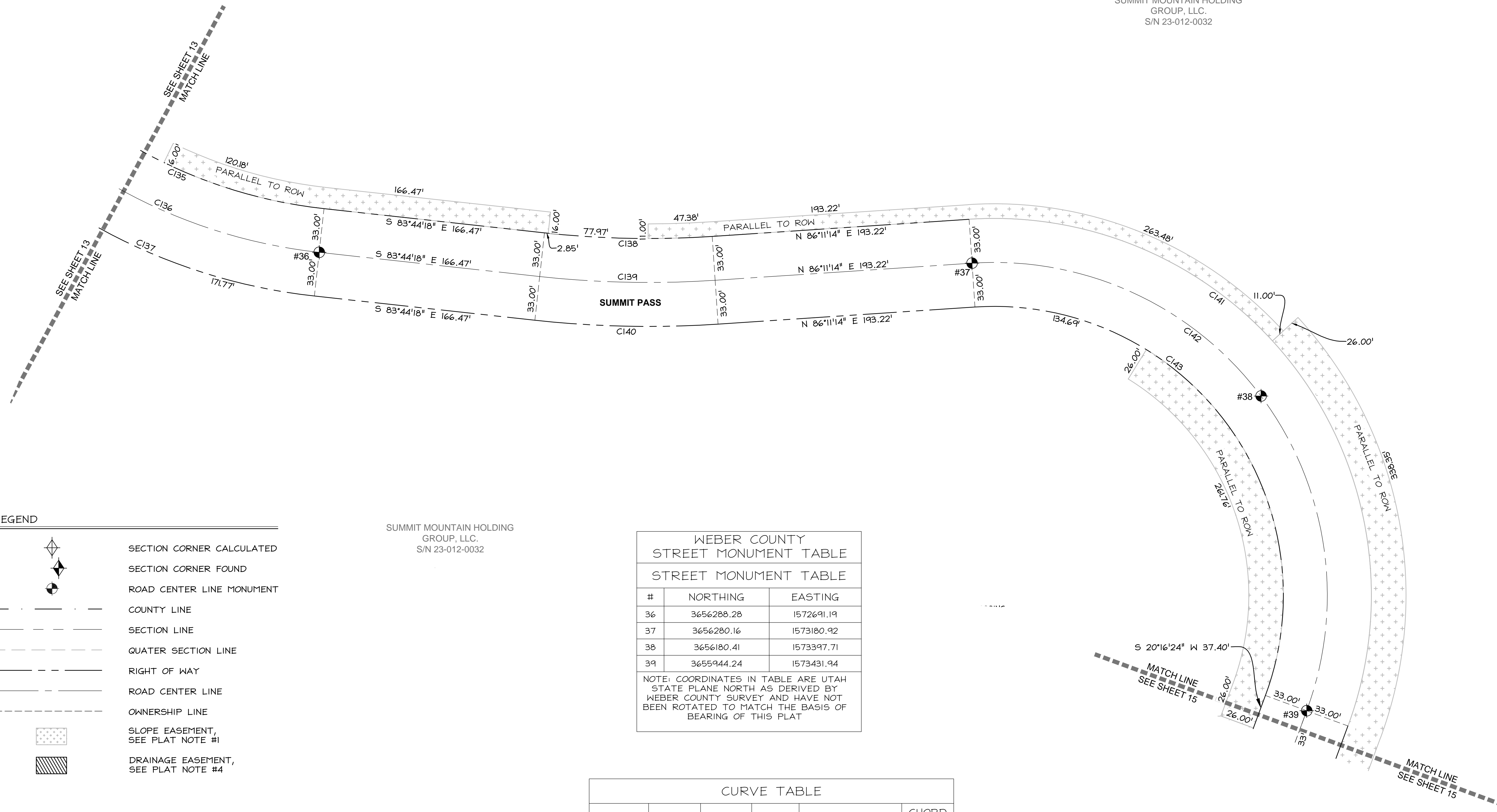
DEDICATION PLAT FOR SUMMIT PASS AND SPRING PARK

LOCATED IN SECTION 1 OF TOWNSHIP 7 NORTH, RANGE 1 EAST
AND SECTIONS 6, 5, & 8 OF TOWNSHIP 7 NORTH, RANGE 2 EAST,
SALT LAKE BASE AND MERIDIAN, WEBER COUNTY, UTAH

NOVEMBER 27, 2013

SUMMIT MOUNTAIN HOLDING
GROUP, LLC.
S/N 23-012-0032

DATE: _____ TIME: _____ DRAWING NAME: _____
SERVER: _____ PLOTTING VIEW: _____
PATH: _____ ESCORTER: _____



LEGEND

	SECTION CORNER CALCULATED
	SECTION CORNER FOUND
	ROAD CENTER LINE MONUMENT
	COUNTY LINE
	SECTION LINE
	QUATER SECTION LINE
	RIGHT OF WAY
	ROAD CENTER LINE
	OWNERSHIP LINE
	SLOPE EASEMENT, SEE PLAT NOTE #1
	DRAINAGE EASEMENT, SEE PLAT NOTE #4

SUMMIT MOUNTAIN HOLDING
GROUP, LLC.
S/N 23-012-0032

WEBER COUNTY
STREET MONUMENT TABLE

#	NORTHING	EASTING
36	3656288.28	1572691.19
37	3656280.16	1573180.92
38	3656180.41	1573397.71
39	3655944.24	1573431.94

NOTE: COORDINATES IN TABLE ARE UTAH STATE PLANE NORTH AS DERIVED BY WEBER COUNTY SURVEY AND HAVE NOT BEEN ROTATED TO MATCH THE BASIS OF BEARING OF THIS PLAT

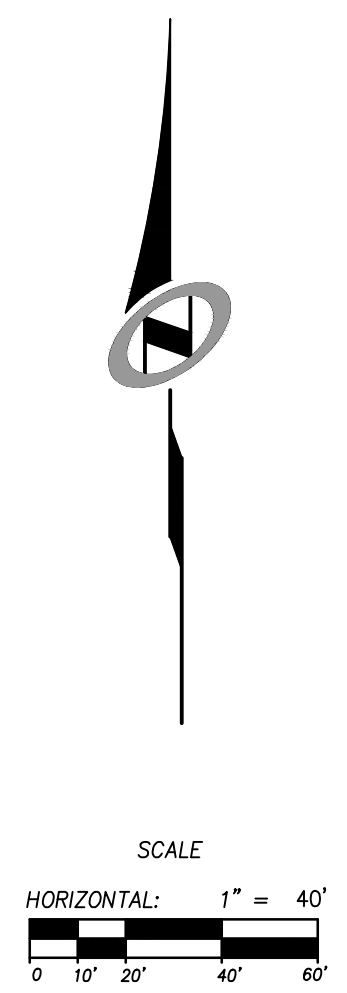
CURVE TABLE

CURVE #	LENGTH	RADIUS	DELTA	CHORD BEARING	CHORD LENGTH
C135	225.81	367.00	35°15'14"	S 66°06'41" E	222.27'
C136	246.12	400.00	35°15'14"	S 66°06'41" E	242.25'
C137	266.42	433.00	35°15'14"	S 66°06'41" E	262.24'
C138	126.07	717.00	10°04'29"	S 88°46'32" E	125.91'
C139	131.88	750.00	10°04'29"	S 88°46'32" E	131.71'
C140	137.68	783.00	10°04'29"	S 88°46'32" E	137.50'
C141	563.50	283.00	114°05'10"	N 36°46'11" W	474.92'
C142	497.79	250.00	114°05'10"	N 36°46'11" W	419.54'
C143	432.09	217.00	114°05'10"	N 36°46'11" W	364.16'

NOTE:
ALL SLOPE EASEMENTS ARE PARALLEL TO R.O.W.

DEDICATION PLAT FOR
SUMMIT PASS AND SPRING PARK

LOCATED IN SECTION 8 OF
TOWNSHIP 7 NORTH, RANGE 2 EAST, SALT LAKE
BASE AND MERIDIAN, WEBER COUNTY, UTAH



Sheet 14 of 15

N|V|5
NOLTE VERTICAL FIVE
5217 SOUTH STATE STREET, SUITE 300 MURRAY, UT 84107
801.743.1300 TEL. 801.743.0300 FAX WWW.NOLTE.COM

RECORDED #

STATE OF UTAH, COUNTY OF WEBER,
RECORDED AND FILED AT THE

REQUEST OF: _____

ENTRY NO: _____

DATE: _____ TIME: _____

BOOK: _____ PAGE: _____

FEE \$ _____

WEBER COUNTY RECORDER

DEDICATION PLAT FOR SUMMIT PASS AND SPRING PARK

LOCATED IN SECTION 1 OF TOWNSHIP 7 NORTH, RANGE 1 EAST AND SECTIONS 6, 5, & 8 OF TOWNSHIP 7 NORTH, RANGE 2 EAST, SALT LAKE BASE AND MERIDIAN, WEBER COUNTY, UTAH

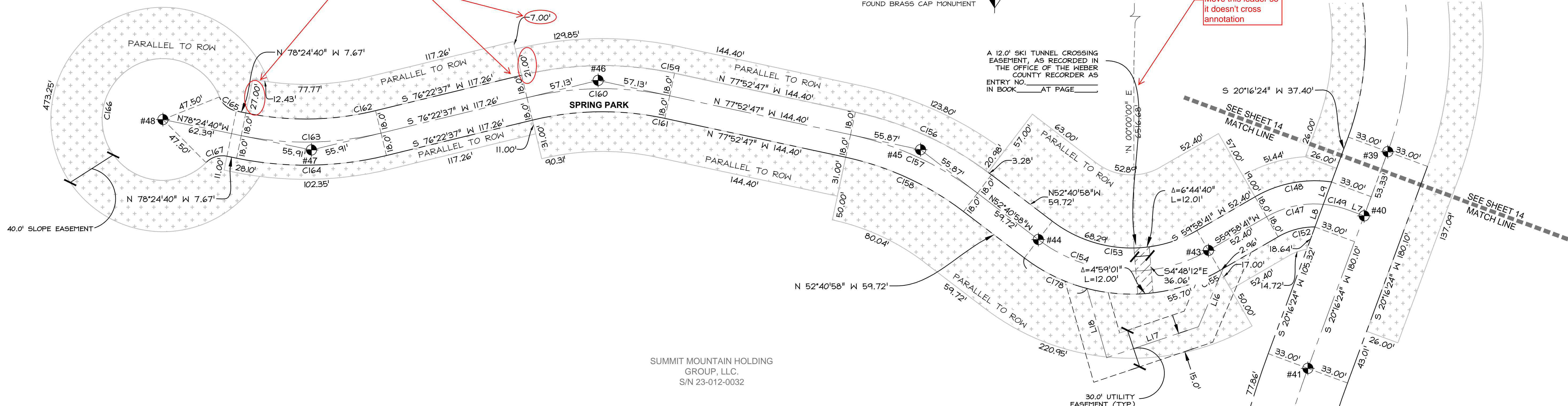
NOVEMBER 27, 2013

NORTHEAST CORNER SECTION 1, TOWNSHIP 7 NORTH, RANGE 1 EAST, SALT LAKE BASE AND MERIDIAN, FOUND BRASS CAP MONUMENT

Check this tie, I think it should be Southeast

Move this leader so it doesn't cross annotation

Is this 27' or 28'?



SUMMIT MOUNTAIN HOLDING GROUP, LLC. S/N 23-012-0032

SUMMIT MOUNTAIN HOLDING GROUP, LLC. S/N 23-012-0032

LINE #	LENGTH	DIRECTION
L7	13.48	S 69°43'36" E
L8	18.86	S 20°16'24" W
L9	18.51	S 20°16'24" W
L16	49.33	N 23°07'00" E
L17	75.60	N 71°22'55" E
L18	56.10	S 15°53'00" E

CURVE #	LENGTH	RADIUS	DELTA	CHORD BEARING	CHORD LENGTH
C144	222.83	667.00	19°08'30"	S 10°42'09" W	221.80'
C145	233.86	700.00	19°08'30"	S 10°42'09" W	232.77'
C146	244.88	733.00	19°08'30"	N 10°42'09" E	243.75'
C147	46.09	75.00	35°12'42"	S 77°35'02" W	45.37'
C148	61.97	93.00	38°10'51"	S 79°04'07" W	60.83'
C149	19.74	75.00	15°05'01"	N 77°16'06" W	19.69'
C152	30.12	57.00	30°16'19"	S 75°06'50" W	29.77'
C153	119.88	102.00	67°20'21"	S 86°21'09" E	113.10'
C154	141.04	120.00	67°20'21"	N 86°21'09" W	133.06'
C155	162.19	138.00	67°20'21"	S 86°21'09" E	153.02'
C156	117.86	268.00	25°11'49"	N 65°16'53" W	116.91'
C157	109.94	250.00	25°11'49"	N 65°16'53" W	109.06'
C158	102.03	232.00	25°11'49"	N 65°16'53" W	101.21'
C159	120.41	268.00	25°44'36"	S 89°14'55" W	119.40'
C160	112.33	250.00	25°44'36"	S 89°14'55" W	111.38'
C161	104.24	232.00	25°44'36"	S 89°14'55" W	103.36'
C162	102.09	232.00	25°12'43"	N 88°58'58" E	101.27'
C163	110.01	250.00	25°12'43"	S 88°58'58" W	109.12'
C164	117.93	268.00	25°12'43"	N 88°58'58" E	116.98'
C165	17.80	18.00	56°39'33"	S 50°04'54" E	17.08'
C166	243.17	47.50	293°19'06"	S 11°35'20" W	52.21'
C167	17.80	18.00	56°39'33"	S 73°15'33" W	17.08'
C178	54.75	138.00	22°43'47"	S 64°02'52" E	54.39'

#	NORTHING	EASTING
40	3655894.24	1573413.48
41	3655775.37	1573369.57
42	3655546.75	1573326.36
43	3655867.25	1573292.08
44	3655875.71	1573159.35
45	3655945.76	1573067.46
46	3655999.78	1572815.91
47	3655945.56	1572592.19
48	36559669.31	1572476.36

NOTE: COORDINATES IN TABLE ARE UTAH STATE PLANE NORTH AS DERIVED BY WEBER COUNTY SURVEY AND HAVE NOT BEEN ROTATED TO MATCH THE BASIS OF BEARING OF THIS PLAT

LINE #	LENGTH	DIRECTION
L321	36.48	N 88°42'25" W
L322	20.00	N 01°17'35" E
L323	36.43	S 88°42'25" E

LEGEND

- SECTION CORNER CALCULATED
- SECTION CORNER FOUND
- ROAD CENTER LINE MONUMENT
- COUNTY LINE
- SECTION LINE
- QUATER SECTION LINE
- RIGHT OF WAY
- ROAD CENTER LINE
- OWNERSHIP LINE
- SLOPE EASEMENT, SEE PLAT NOTE #1
- DRAINAGE EASEMENT, SEE PLAT NOTE #4

NOTE: ALL SLOPE EASEMENTS ARE PARALLEL TO R.O.W.

DEDICATION PLAT FOR SUMMIT PASS AND SPRING PARK

LOCATED IN SECTION 8 OF TOWNSHIP 7 NORTH, RANGE 2 EAST, SALT LAKE BASE AND MERIDIAN, WEBER COUNTY, UTAH

SCALE
HORIZONTAL: 1" = 40'

RECORDED #

STATE OF UTAH, COUNTY OF WEBER, RECORDED AND FILED AT THE REQUEST OF: _____

ENTRY NO: _____ DATE: _____ TIME: _____

BOOK: _____ PAGE: _____

FEE \$ _____

WEBER COUNTY RECORDER

Sheet 15 of 15

N | V | 5

NOLTE VERTICAL FIVE

5217 SOUTH STATE STREET, SUITE 300 MURRAY, UT 84107
801.743.1300 TEL. 801.743.0300 FAX WWW.NOLTE.COM