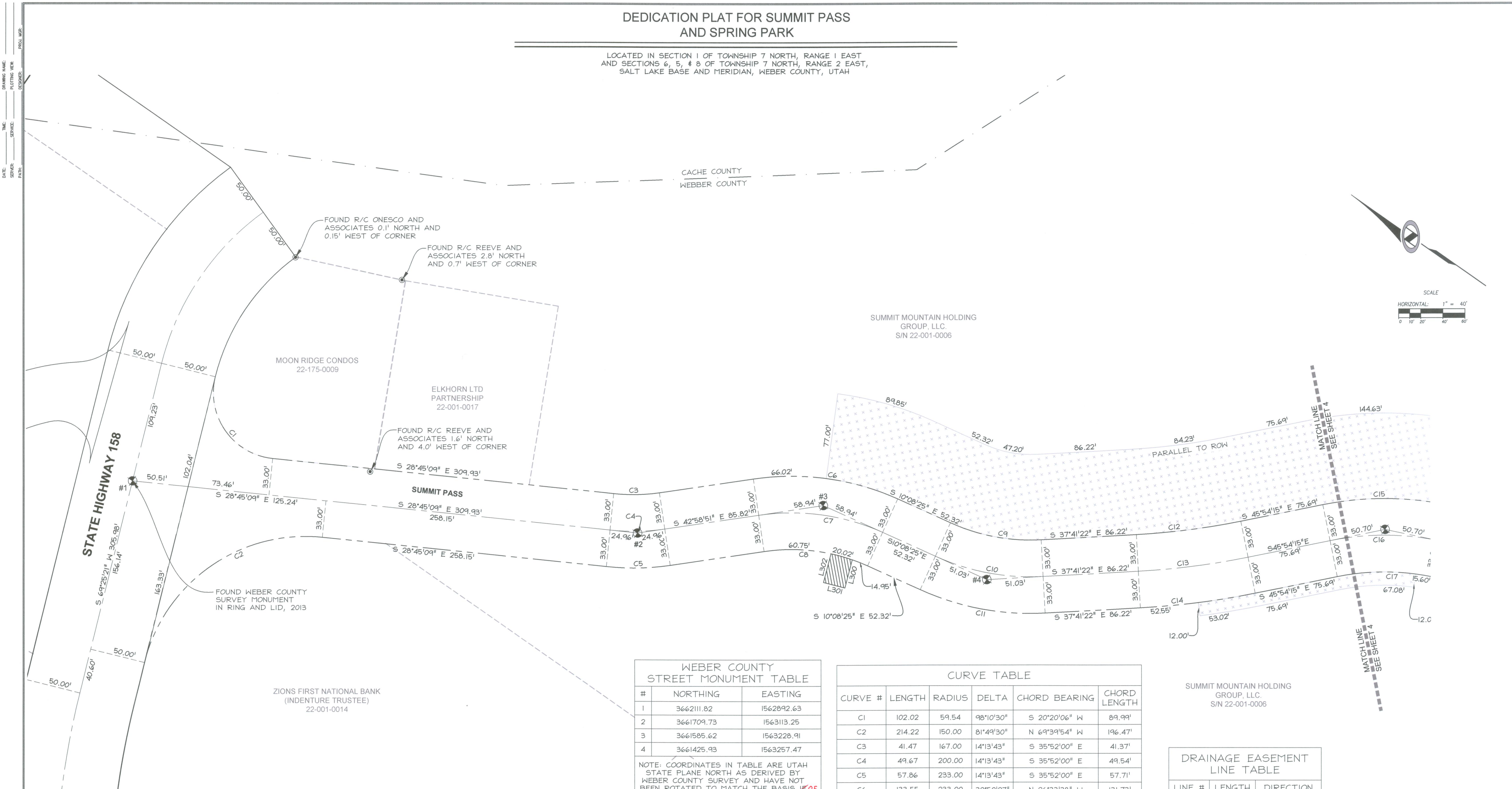


DEDICATION PLAT FOR SUMMIT PASS AND SPRING PARK

LOCATED IN SECTION 1 OF TOWNSHIP 7 NORTH, RANGE 1 EAST
AND SECTIONS 6, 5, & 8 OF TOWNSHIP 7 NORTH, RANGE 2 EAST,
SALT LAKE BASE AND MERIDIAN, WEBER COUNTY, UTAH



WEBER COUNTY
STREET MONUMENT TABLE

#	NORTHING	EASTING
1	3662111.82	1562892.63
2	3661709.73	1563113.25
3	3661585.62	1563228.91
4	3661425.93	1563257.47

NOTE: COORDINATES IN TABLE ARE UTAH
STATE PLANE NORTH AS DERIVED BY
WEBER COUNTY SURVEY AND HAVE NOT
BEEN ROTATED TO MATCH THE BASIS **JPOF**
BEARING OF THIS PLAT

CURVE TABLE

CURVE #	LENGTH	RADIUS	DELTA	CHORD BEARING	CHORD LENGTH
C1	102.02	59.54	98°10'30"	S 20°20'06" W	89.99'
C2	214.22	150.00	81°49'30"	N 69°39'54" W	196.47'
C3	41.47	167.00	14°13'43"	S 35°52'00" E	41.37'
C4	49.67	200.00	14°13'43"	S 35°52'00" E	49.54'
C5	57.86	233.00	14°13'43"	S 35°52'00" E	57.71'
C6	133.55	233.00	32°50'27"	N 26°33'38" W	131.73'
C7	114.64	200.00	32°50'27"	N 26°33'38" W	113.07'
C8	95.72	167.00	32°50'27"	N 26°33'38" W	94.42'
C9	84.23	175.17	27°32'57"	S 23°54'53" E	83.42'
C10	100.09	208.17	27°32'57"	S 23°54'53" E	99.13'
C11	115.96	241.17	27°32'57"	S 23°54'53" E	114.85'
C12	95.27	664.48	8°12'53"	S 41°47'48" E	95.19'
C13	100.00	697.48	8°12'53"	S 41°47'48" E	99.91'
C14	104.73	730.48	8°12'53"	S 41°47'48" E	104.64'
C15	113.39	279.49	23°14'40"	N 34°16'55" W	112.61'
C16	100.00	246.49	23°14'40"	N 34°16'55" W	99.32'

DRAINAGE EASEMENT
LINE TABLE

LINE #	LENGTH	DIRECTION
L300	26.23	S 70°00'49" W
L301	20.00	N 19°59'11" W
L302	26.67	N 70°00'49" E

NOTE:
ALL SLOPE EASEMENTS ARE PARALLEL TO R.O.W.

LEGEND

- SECTION CORNER CALCULATED
- SECTION CORNER FOUND
- ROAD CENTER LINE MONUMENT
- COUNTY LINE
- SECTION LINE
- QUARTER SECTION LINE
- RIGHT OF WAY
- ROAD CENTER LINE
- OWNERSHIP LINE
- SLOPE EASEMENT, SEE PLAT NOTE #1
- DRAINAGE EASEMENT, SEE PLAT NOTE #4

SUNDOWN CONDOS AT
POWDER MOUNTAIN PHASE 1
22-093-0021

NO.	BY	DATE	REVISIONS:
2	TD	2013-10-23	COUNTY REDLINES
1	TD	2013-09-19	O.D./PLAT NOTES & EASEMENTS

**DEDICATION PLAT FOR
SUMMIT PASS AND SPRING PARK**

LOCATED IN SECTION 1 OF
TOWNSHIP 7 NORTH, RANGE 2 EAST, SALT LAKE
BASE AND MERIDIAN, WEBER COUNTY, UTAH

Sheet 3 of 15

N|V|5
NOLTE VERTICALFIVE

5217 SOUTH STATE STREET, SUITE 300 MURRAY, UT 84107
801.743.1300 TEL. 801.743.0300 FAX 801.743.0300 WWW.NOLTE.COM

RECORDED #

STATE OF UTAH, COUNTY OF WEBER,
RECORDED AND FILED AT THE

REQUEST OF: _____

ENTRY NO: _____

DATE: _____ TIME: _____

BOOK: _____ PAGE: _____

FEE \$ _____

WEBER COUNTY RECORDER