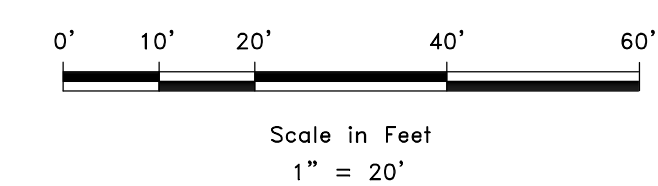
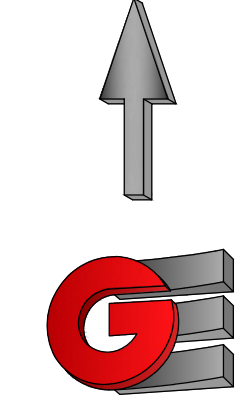
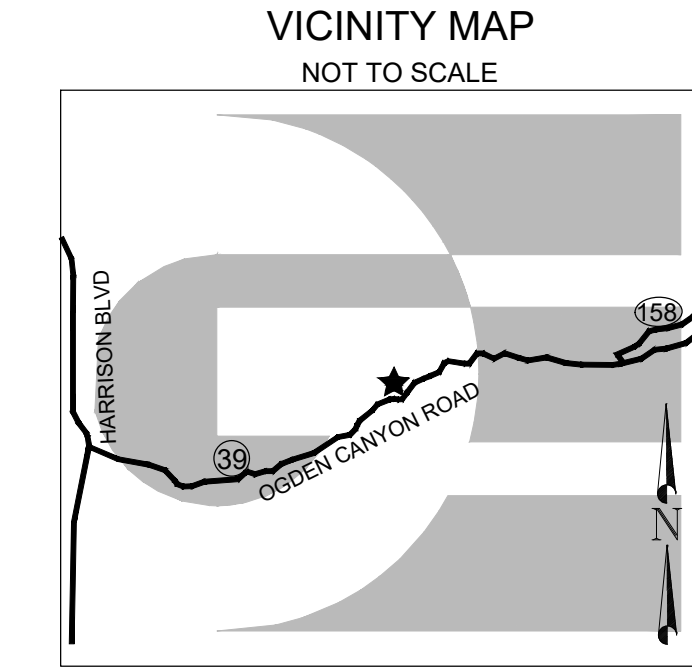
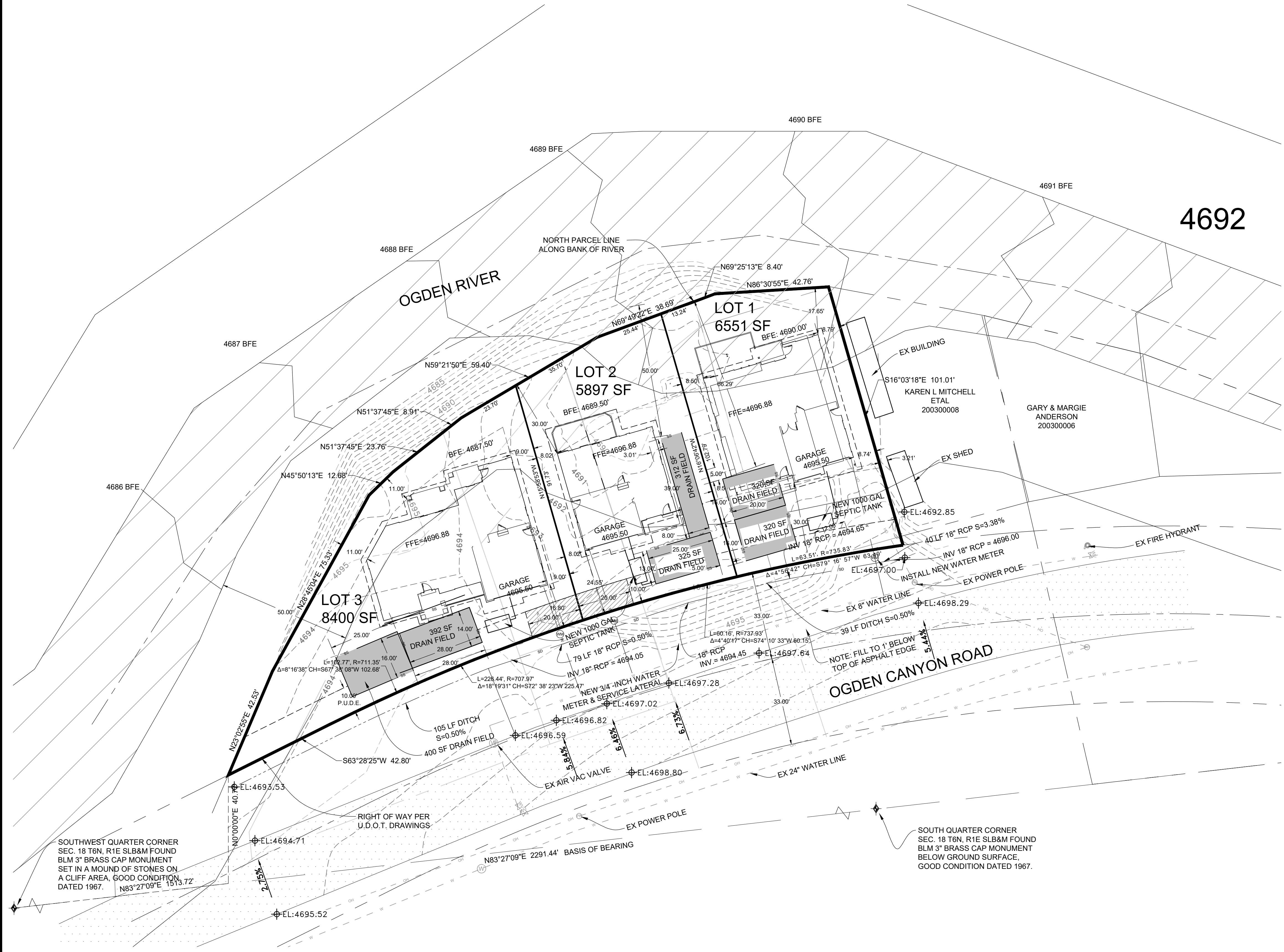


NEILSON HERMITAGE SUBDIVISION
 LOCATED IN THE SOUTHWEST QUARTER OF SECTION 18,
 TOWNSHIP 6 NORTH, RANGE 1 EAST, SALT LAKE BASE AND MERIDIAN,
 WEBER COUNTY, UTAH
 JULY 2020



LEGEND

- ◆ WEBER COUNTY MONUMENT AS NOTED
- SET 24" REBAR AND CAP MARKED GARDNER ENGINEERING
- SUBDIVISION BOUNDARY
- LOT LINE
- - - ADJACENT PARCEL
- - - SECTION LINE
- - - EASEMENT
- ▨ AE FLOODWAY
- ▨ SHARED ACCESS EASEMENT
- - - EXISTING WATER LINE
- - - EXISTING IRRIGATION LINE
- - - EXISTING STORM DRAIN
- - - EXISTING SANITARY SEWER
- - - EXISTING OVERHEAD POWER
- - - EXISTING GAS LINE
- ⊙ EXISTING WATER METER
- ⊙ EXISTING WATER MANHOLE
- ⊙ EXISTING FIRE HYDRANT
- ⊙ EXISTING WATER VALVE
- ⊙ EXISTING STORM MANHOLE
- ⊙ EXISTING CATCH BASIN
- ⊙ EXISTING SEWER MANHOLE

REVISIONS	DATE	DESCRIPTION

SCALE: 1"=20'
 DATE: 7/16/20
 DESIGN: WJS
 DRAWN: WJS
 CHECKED: TMN
 DWG.: E:\2020 - MISC SURVEY\1999 - DOUG NELSON\DESIGN\DWG\NEILSON.DWG

SITE, UTILITY AND GRADING PLAN
 NEILSON HERMITAGE SUBDIVISION
 305 OGDEN CANYON ROAD
 OGDEN VALLEY, WEBER COUNTY

GARDNER ENGINEERING
 CIVIL • LAND PLANNING
 MUNICIPAL • LAND SURVEYING
 5750 SOUTH 375 EAST OGDEN, UT
 OFFICE: 801.476.0202 FAX: 801.476.0066

P:\2020 - MISC SURVEY\1999 - DOUG NELSON\DESIGN\DWG\NEILSON.DWG