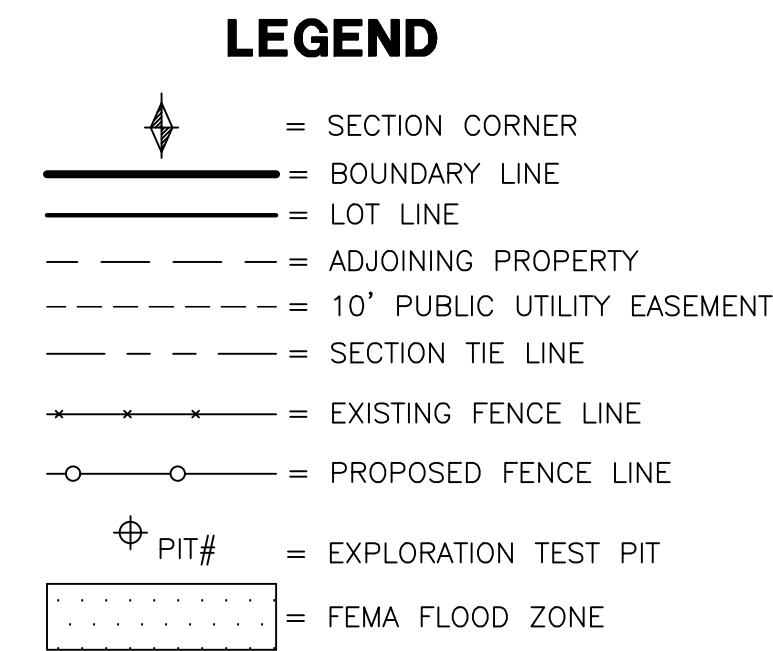
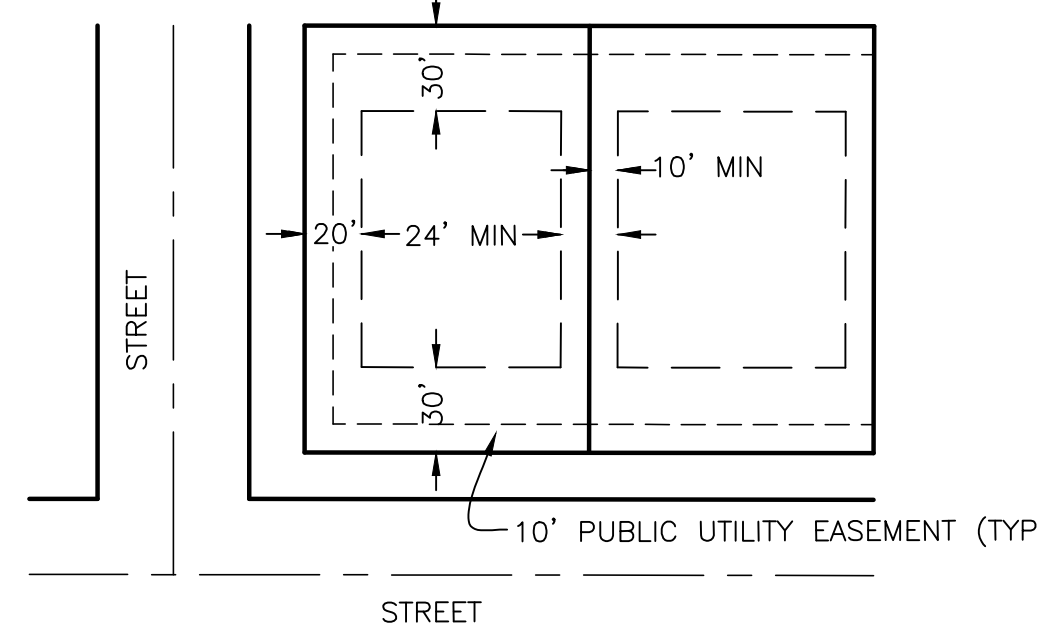
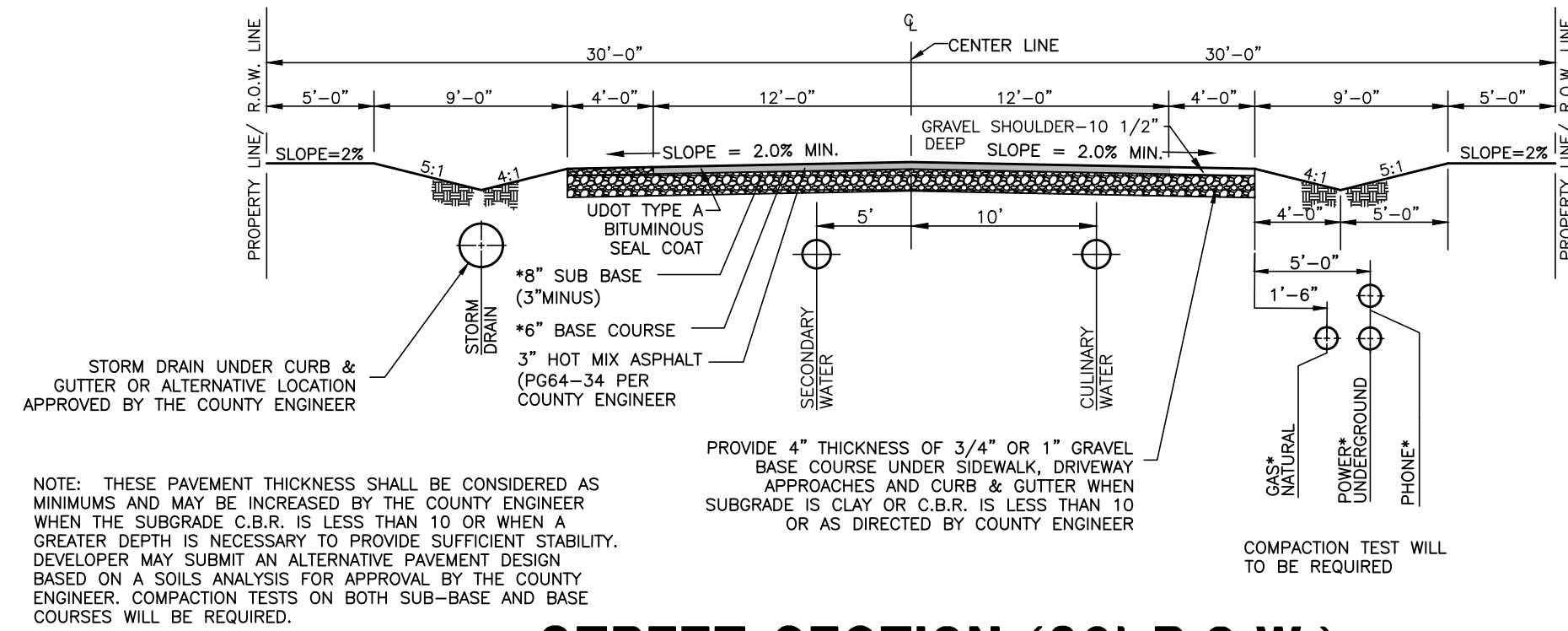




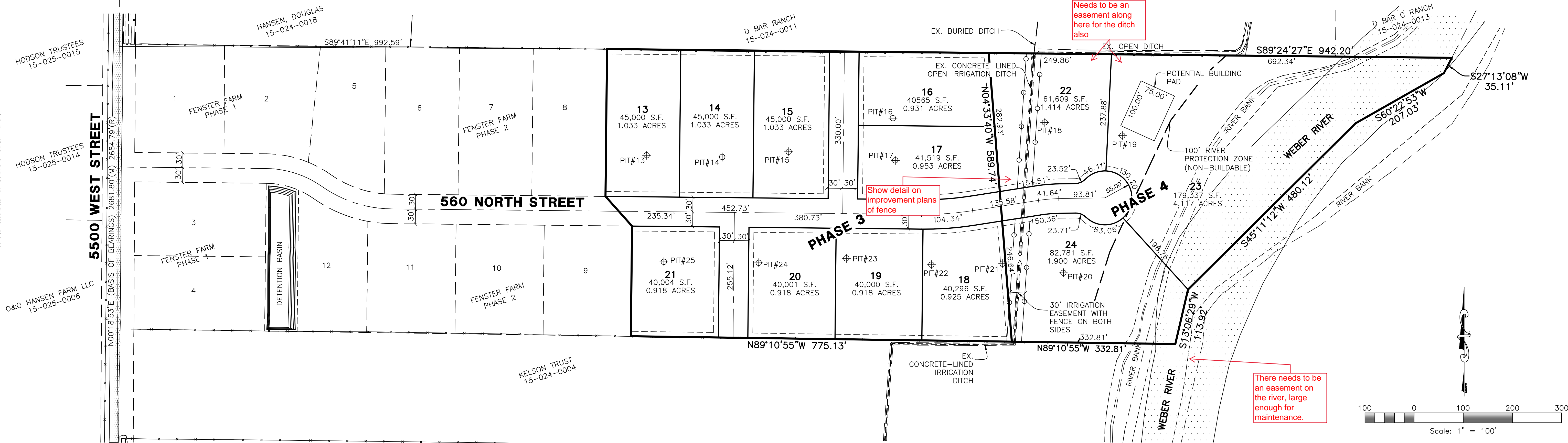
VICINITY MAP
NOT TO SCALE



ELEVATION NOTES

- ADD 3.18 TO PROJECT ELEVATIONS FOR COMPARISON TO FEMA FIRM PARCELS (LOCATED ON NAVD88)
- ALL LOTS: FFE 4224.82 BFE 4222.82

CENTER OF SECTION 7, TOWNSHIP 6 NORTH, RANGE 2 WEST, SALT LAKE BASE & MERIDIAN, U.S. SURVEY



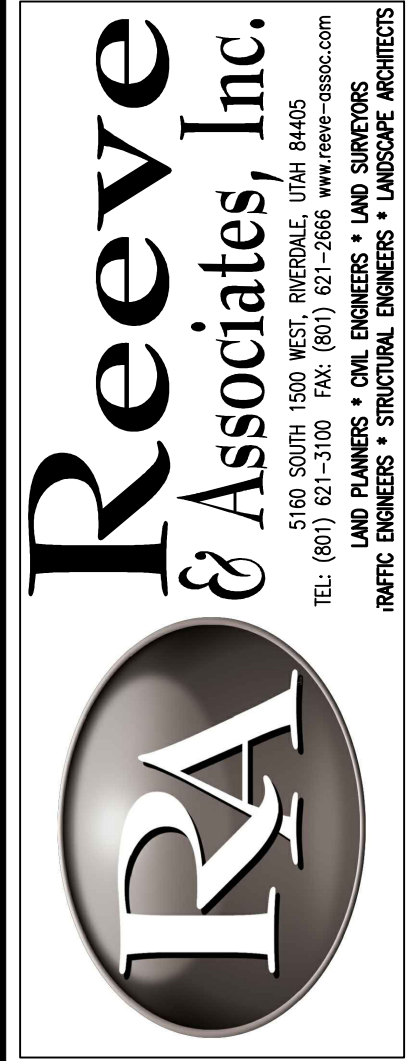
EXPLORATION TEST PIT INFO.

<p>EXPLORATION PIT #13 (UTM ZONE 12 NAD 83 (12T) 0407102E 4569238N) 0-10' SANDY LOAM, GRANULAR STRUCTURE, 0.65 GPD/SQ FT 10-64' SANDY CLAY LOAM, BLOCKY STRUCTURE, 0.4 GPD/SQ FT (E)(H)= 240 MPI 64-100' SANDY CLAY LOAM, MASSIVE STRUCTURE, (E)(H)</p>	<p>EXPLORATION PIT #17 (UTM ZONE 12 NAD 83 (12T) 0407256E 4569233N) 0-20' SANDY LOAM, GRANULAR STRUCTURE, 0.65 GPD/SQ FT 20-70' SANDY LOAM, WEAK MASSIVE STRUCTURE, 0.45 GPD/SQ FT 70-120' SANDY CLAY LOAM, MASSIVE STRUCTURE, (E)(H) 120-131' SANDY LOAM, WEAK MASSIVE STRUCTURE, 0.45 GPD/SQ FT GROUND WATER OBSERVED AT 67 INCHES.</p>	<p>EXPLORATION PIT #21 (UTM ZONE 12 NAD 83 (12T) 0407322E 4569168N) 0-16' SANDY LOAM, GRANULAR STRUCTURE, 0.65 GPD/SQ FT 16-60' CLAY LOAM, GRANULAR STRUCTURE, 0.4 GPD/SQ FT (E)(H)=120 MPI 60-70' LOAMY SAND, WEAK MASSIVE STRUCTURE, 0.45 GPD/SQ FT 70-128' SANDY CLAY LOAM, GRANULAR STRUCTURE, 0.4 GPD/SQ FT (E)(H) GROUND WATER OBSERVED AT 67 INCHES.</p>	<p>EXPLORATION PIT #24 (UTM ZONE 12 NAD 83 (12T) 0407166E 4569171N) 0-15' FINE SANDY LOAM, GRANULAR STRUCTURE, 0.5 GPD/SQ FT 15-26' CLAY LOAM, BLOCKY STRUCTURE, 0.4 GPD/SQ FT (E)(H)=120 MPI 26-49' SANDY CLAY LOAM, BLOCKY STRUCTURE, 0.4 GPD/SQ FT (E)(H) = 68 MPI 49-105' FINE SANDY LOAM, BLOCKY STRUCTURE, 0.5 GPD/SQ FT GROUND WATER OBSERVED AT 105 INCHES.</p>
<p>EXPLORATION PIT #14 (UTM ZONE 12 NAD 83 (12T) 0407149 E 4569236 N) 0-8' FINE SANDY LOAM, GRANULAR STRUCTURE, 0.5 GPD/SQ FT 8-24' FINE SANDY CLAY LOAM, BLOCKY STRUCTURE, 0.4 GPD/SQ FT (E)(H)= 60 MPI 24-48' FINE SANDY CLAY LOAM, MASSIVE STRUCTURE, (E)(H) = 60 MPI 48-86' LOAMY SAND, SINGLE GRAIN STRUCTURE, 09 (E) GROUND WATER OBSERVED AT 86 INCHES.</p>	<p>EXPLORATION PIT #18 (UTM ZONE 12 NAD 83 (12T) 0407349E 4569255N) 0-10' FINE SANDY LOAM, GRANULAR STRUCTURE, 0.5 GPD/SQ FT 10-36' CLAY LOAM, BLOCKY STRUCTURE, 0.4 GPD/SQ FT (E)(H)= 80 MPI 36-112' SILTY CLAY LOAM, MASSIVE STRUCTURE, (E)(H) = 96 MPI</p>	<p>EXPLORATION PIT #22 (UTM ZONE 12 NAD 83 (12T) 0407274E 4569168N) 0-10' FINE SANDY LOAM, GRANULAR STRUCTURE, 0.5 GPD/SQ FT 10-50' SILTY CLAY LOAM, BLOCKY STRUCTURE, 0.4 GPD/SQ FT (E)(H)=120 MPI 50-122' SILTY CLAY LOAM, MASSIVE STRUCTURE, (E)(H)</p>	<p>EXPLORATION PIT #25 (UTM ZONE 12 NAD 83 (12T) 0407112E 4569172N) 0-18' SANDY LOAM, GRANULAR STRUCTURE, 0.65 GPD/SQ FT 18-45' SANDY LOAM, MASSIVE STRUCTURE, 0.45 GPD/SQ FT=120 MPI 45-80' SANDY CLAY LOAM, MASSIVE STRUCTURE, (E)(H) 80-92' LOAMY SAND, WEAK MASSIVE STRUCTURE, 0.45 GPD/SQ FT GROUND WATER OBSERVED AT 64 INCHES.</p>
<p>EXPLORATION PIT #15 (UTM ZONE 12 NAD 83 (12T) 0407190E 4569239N) 0-10' SANDY LOAM, GRANULAR STRUCTURE, 0.65 GPD/SQ FT 10-32' SANDY CLAY LOAM, BLOCKY STRUCTURE, 0.4 GPD/SQ FT (E)(H)= 48 MPI 32-96' SANDY CLAY LOAM, MASSIVE STRUCTURE, (E)(H)=106 MPI GROUND WATER OBSERVED AT 96 INCHES.</p>	<p>EXPLORATION PIT #19 (UTM ZONE 12 NAD 83 (12T) 0407397 E 4569253 N) 0-12' SANDY LOAM, GRANULAR STRUCTURE, 0.65 GPD/SQ FT 12-60' SANDY LOAM, WEAK MASSIVE STRUCTURE, 0.45 GPD/SQ FT (E) 60-96' LOAMY SAND, SINGLE GRAIN STRUCTURE, 09 GPD/SQ FT (E)</p>	<p>EXPLORATION PIT #23 (UTM ZONE 12 NAD 83 (12T) 0407225 E 4569173 N) 0-12' LOAM, GRANULAR STRUCTURE, 0.5 GPD/SQ FT 12-20' CLAY LOAM, BLOCKY STRUCTURE, 0.4 GPD/SQ FT (E)(H)=60 MPI 20-54' SANDY CLAY LOAM, BLOCKY STRUCTURE, 0.4 GPD/SQ FT (E)(H)=53 MPI 54-108' LOAMY SAND, SINGLE GRAIN STRUCTURE, 0.65 GPD/SQ FT GROUND WATER OBSERVED AT 108 INCHES.</p>	
<p>EXPLORATION PIT #16 (UTM ZONE 12 NAD 83 (12T) 0407255 E 4569259 N) 0-10' SANDY LOAM, GRANULAR STRUCTURE, 0.65 GPD/SQ FT 10-32' SANDY CLAY LOAM, BLOCKY STRUCTURE, 0.4 GPD/SQ FT (E)(H)= 120 MPI 32-120' SILTY CLAY LOAM, MASSIVE STRUCTURE, (E)(H)=64 MPI GROUND WATER OBSERVED AT 120 INCHES.</p>	<p>EXPLORATION PIT #20 (UTM ZONE 12 NAD 83 (12T) 0407359 E 4569162 N) 0-10' SANDY LOAM, GRANULAR STRUCTURE, 0.65 GPD/SQ FT 10-72' SANDY LOAM, WEAK MASSIVE STRUCTURE, 0.45 GPD/SQ FT 72-110' LOAMY SAND, SINGLE GRAIN STRUCTURE, 0.9 GPD/SQ FT (E)</p>		

SOUTH QUARTER CORNER OF SECTION 7, TOWNSHIP 6 NORTH, RANGE 2 WEST, SALT LAKE BASE & MERIDIAN, U.S. SURVEY

Fenster Farms Subdivision Phase 4

Weber County, Utah



REVISIONS	DESCRIPTION	COUNTY COMMENTS
DATE		
3-8-19		

Fenster Farms Subdivision Phase 4
PART OF THE SE QUARTER OF SECTION 7, T.6N., R.2W., S.1B. & M., U.S. SURVEY
WEBER COUNTY, UTAH

Phase 4 Exhibit

Project Info.
Engineer: N. Reeve
Designer: C. Cave
Begin Date: 1-8-20
Name: FENSTER FARM PHASE 4
Number: 1714-26

Sheet 1 of 1
1 Sheets