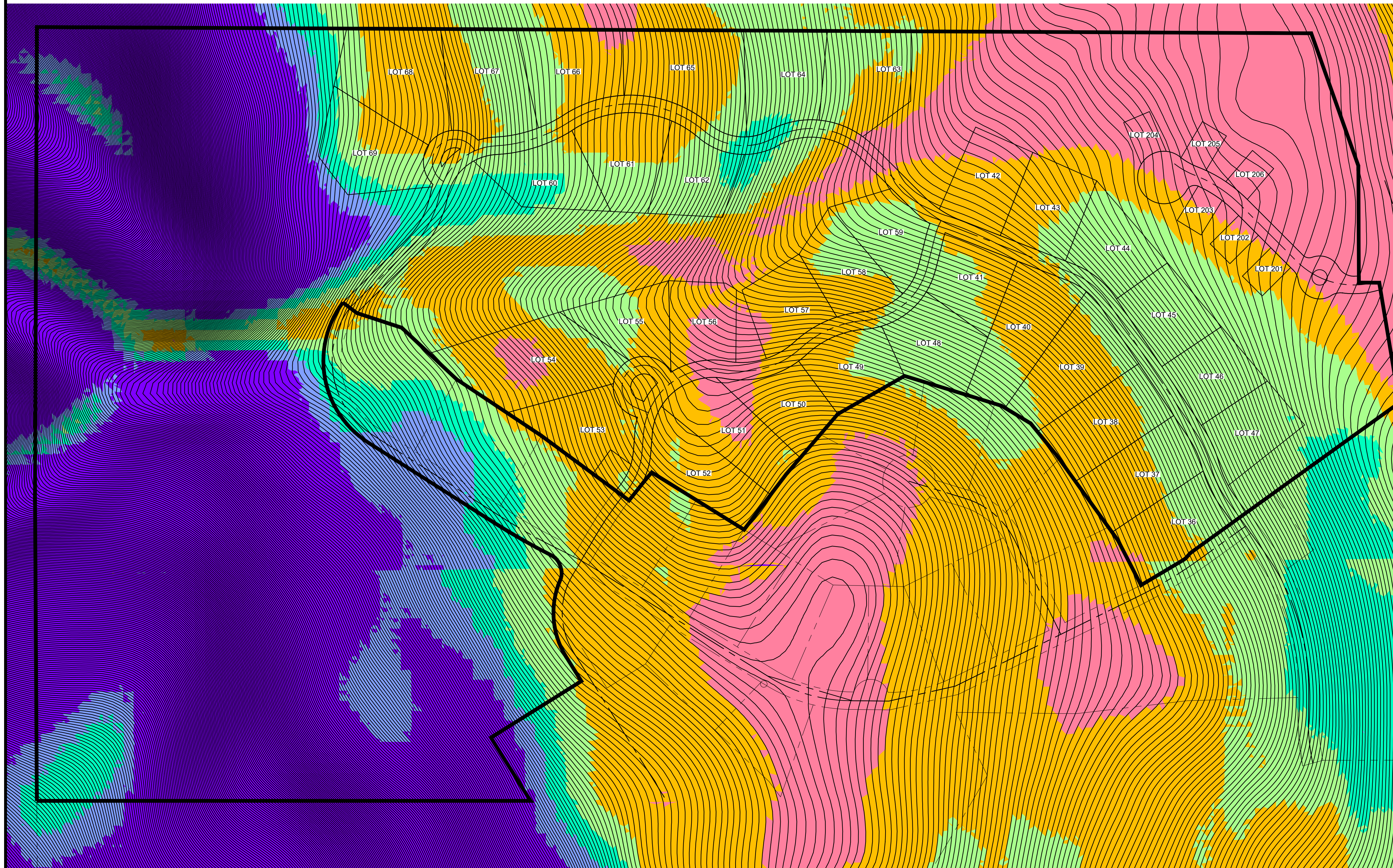


SLOPE ANALYSIS

THE RESERVE AT CRIMSON RIDGE CLUSTER SUBD. - PH 2 + PH 3



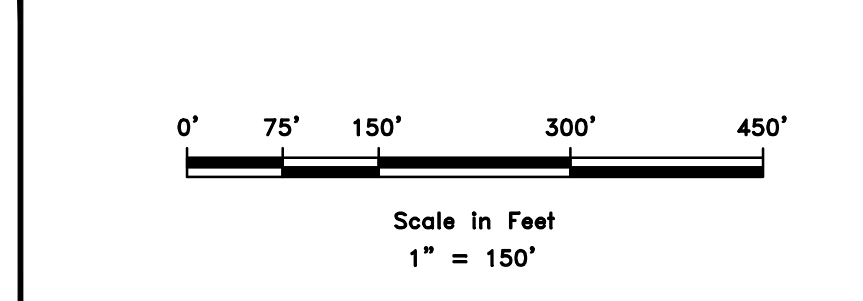
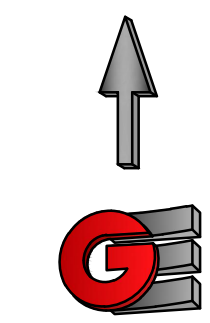
Number	Minimum Slope	Maximum Slope	Area	Color
1	0.00%	10.00%	3142262.63	
2	10.00%	15.00%	6080752.95	
3	15.00%	20.00%	4337425.79	
4	20.00%	25.00%	1806228.42	
5	25.00%	30.00%	2198622.86	
6	30.00%	100.00%	9937661.56	

REVISIONS	DESCRIPTION

SCALE: 1" = 150'
 DATE: 5/7/2020
 DESIGN: RI
 DRAWN: WS
 CHECKED: TMI
 DWG#: RA1008 - BKH INVESTMENT, CRIMSON RIDGE, DESIGN, CRIMSON RIDGE - SLOPE ANALYSIS.DWG

SLOPE ANALYSIS
 THE RESERVE AT CRIMSON RIDGE CLUSTER SUBD.
 1250 NORTH 5200 EAST
 OGDEN VALLEY, WEBER, UTAH

GARDNER ENGINEERING
 CIVIL - LAND PLANNING
 MUNICIPAL - LAND SURVEYING
 5150 SOUTH 375 EAST OGDEN, UT
 OFFICE: 801-476-0202 FAX: 801-476-0066



DEVELOPER:
 BKH INVESTMENT
 STEVE FENTON (WELLS FARGO ADVISORS)
 201 SOUTH MAIN STREET, STE 160
 SALT LAKE CITY, UT 84111
 PH: 801-535-4055

R:\2020 - BKH Investment\Crmsn Ridge\DESIGN\DWG\Crmsn Ridge_Slope_Analysis.dwg, C:\SLOPE ANALYSIS, 5/6/2020 14:44 AM, ARCH (Full) 024.DWG, 35.00 Inches, 1:1