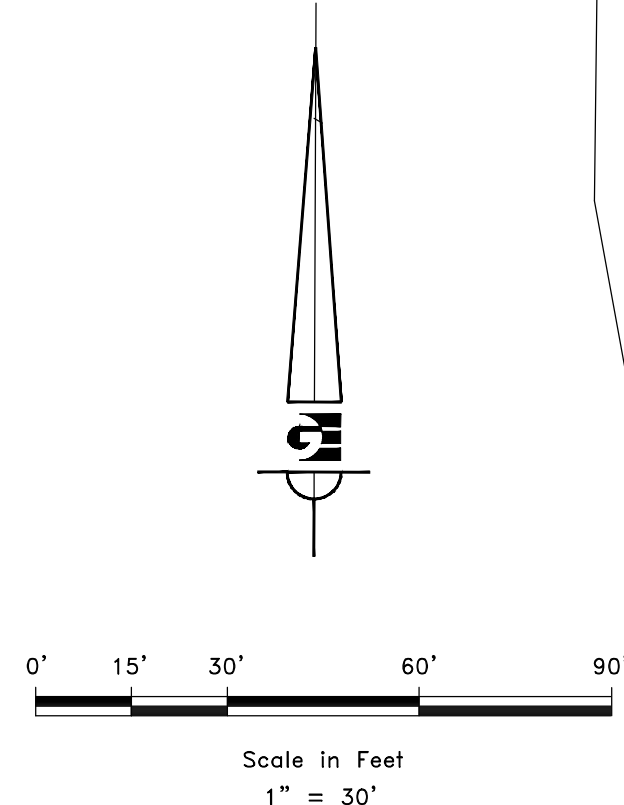


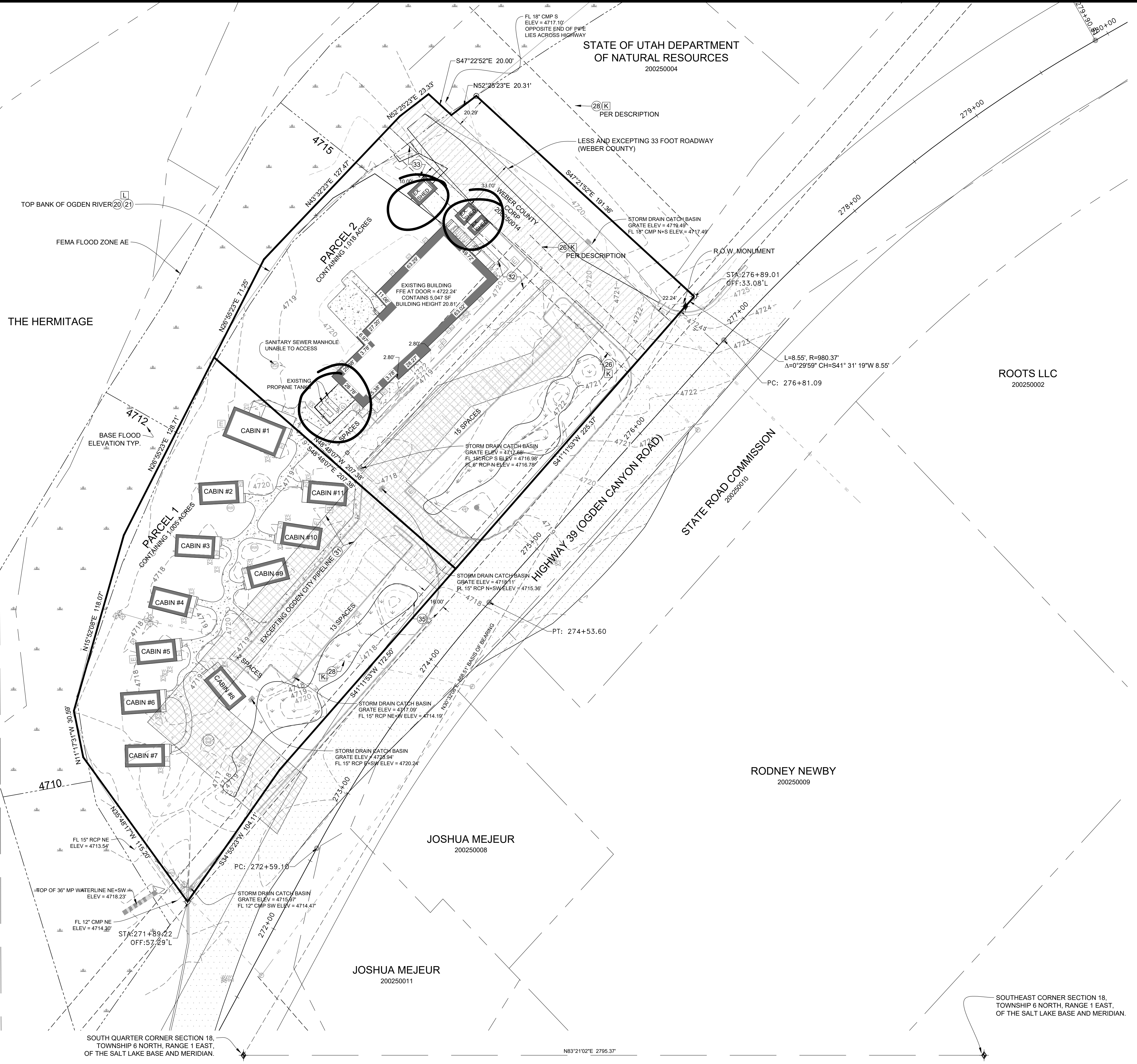
CABIN DETAILS

- CABIN #1 FFE AT DOOR = 4720.06'
20.3'x36.5' CONTAINS 668 SF
BLDG HEIGHT 11.12'
- CABIN #2 FFE AT DOOR = 4719.74'
14.2'x25.5' CONTAINS 361 SF
BLDG HEIGHT 11.12'
- CABIN #3 FFE AT DOOR = 4719.75'
14.2'x25.5' CONTAINS 361 SF
BLDG HEIGHT 11.12'
- CABIN #4 FFE AT DOOR = 4719.85'
14.2'x25.5' CONTAINS 361 SF
BLDG HEIGHT 11.12'
- CABIN #5 FFE AT DOOR = 4719.86'
14.2'x25.5' CONTAINS 361 SF
BLDG HEIGHT 11.12'
- CABIN #6 FFE AT DOOR = 4719.72'
14.2'x25.5' CONTAINS 361 SF
BLDG HEIGHT 11.12'
- CABIN #7 FFE AT DOOR = 4719.05'
14.2'x25.5' CONTAINS 361 SF
BLDG HEIGHT 11.12'
- CABIN #8 FFE AT DOOR = 4719.68'
14.2'x25.5' CONTAINS 361 SF
BLDG HEIGHT 11.12'
- CABIN #9 FFE AT DOOR = 4719.72'
14.2'x25.5' CONTAINS 361 SF
BLDG HEIGHT 11.12'
- CABIN #10 FFE AT DOOR = 4719.88'
14.2'x25.5' CONTAINS 361 SF
BLDG HEIGHT 11.12'
- CABIN #11 FFE AT DOOR = 4720.15'
14.2'x25.5' CONTAINS 361 SF
BLDG HEIGHT 11.12'



LEGEND

- | | | | |
|--|--|--|---------------------------------|
| | COUNTY MONUMENT AS NOTED | | EXISTING WATER VALVE |
| | SET 24" REBAR AND CAP MARKED GARDNER ENGINEERING | | EXISTING FIRE HYDRANT |
| | PROPERTY LINE | | EXISTING SANITARY MANHOLE |
| | ADJACENT PARCEL | | EXISTING SANITARY CLEANOUT |
| | SECTION LINE | | EXISTING CATCH BASIN |
| | CENTERLINE | | EXISTING POWER POLE |
| | RIGHT-OF-WAY LINE | | EXISTING IRRIGATION MANHOLE |
| | EXISTING FENCE LINE | | EXISTING ELECTRICAL TRANSFORMER |
| | EXISTING WATER LINE | | EXISTING TELEPHONE MANHOLE |
| | EXISTING SANITARY SEWER LINE | | EXISTING TELEPHONE PEDESTAL |
| | EXISTING STORM DRAIN LINE | | EXISTING GAS METER |
| | EXISTING OVERHEAD POWER LINE | | EXISTING AC UNIT |
| | EXISTING UNDERGROUND POWER LINE | | EXISTING CONCRETE |
| | EXISTING FIBER OPTIC LINE | | EXISTING LANDSCAPE AREA |
| | EXISTING GAS LINE | | |
| | OGDEN CITY PIPELINE PARCEL | | |
| | WEBER COUNTY ROADWAY PARCEL | | |



SCALE:	1:30 XREF
DATE:	11/26/18
DESIGN:	
DRAWN:	MLL
CHECKED:	KHW

REVISIONS	DATE	DESCRIPTION

ALTA SURVEY FOR GRP CAPITAL
429 AND 435 OGDEN CANYON ROAD, OGDEN UTAH
LOCATED IN THE SOUTHEAST QUARTER OF SECTION 18,
TOWNSHIP 6 NORTH, RANGE 1 EAST, S.L.B. AND M.

GARDNER ENGINEERING
CIVIL - LAND PLANNING
MUNICIPAL - LAND SURVEYING
5150 SOUTH 375 EAST OGDEN, UT
OFFICE: 801.476.6202 FAX: 801.476.6066

S2
2

SOUTHEAST CORNER SECTION 18,
TOWNSHIP 6 NORTH, RANGE 1 EAST,
OF THE SALT LAKE BASE AND MERIDIAN.