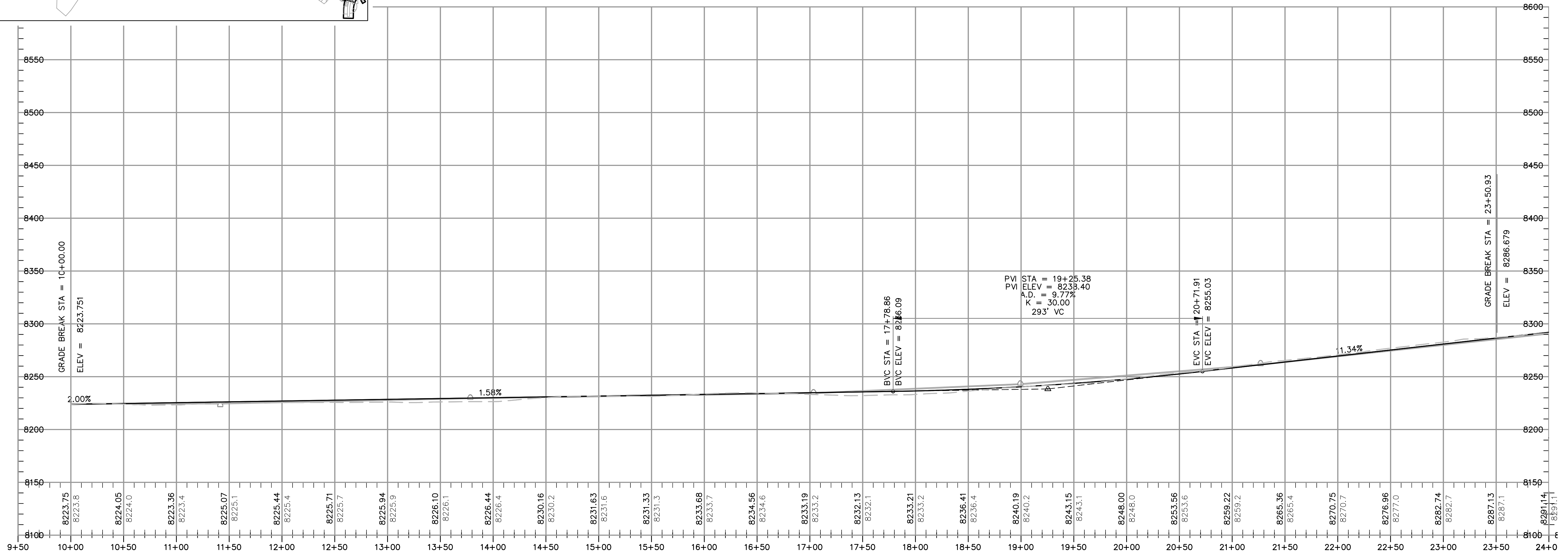


**POWDER RIDGE ROAD (RD01)**  
 STA: 10+00.00 TO 24+00.00



**PRELIMINARY**  
**NOT FOR CONSTRUCTION**

NO.	BY	DATE	REVISIONS

**SUMMIT AT POWDER MTN PH1**  
**POWDER RIDGE ROAD**  
**PLAN AND PROFILE**

DATE SUBMITTED: 12/21/2012

PREPARED FOR: SUMMIT, LLC

**NV5**  
 BEYOND ENGINEERING

6217 SOUTH STATE STREET, SUITE 300  
 801743.8000 TEL. 801743.0800 FAX

MURRAY, UT 84107  
 WWW.NV5.COM

SHEET NUMBER  
**2.0**  
 OF 43 SHEETS

SCALE  
 VERTICAL: 1" = 50'  
 HORIZONTAL: 1" = 50'

JOB NUMBER  
**SLB079306**

CAUTION  
 The engineer preparing these plans will not be responsible for, or liable for, unauthorized changes to or uses of these plans, and must be approved by the preparer of these plans.