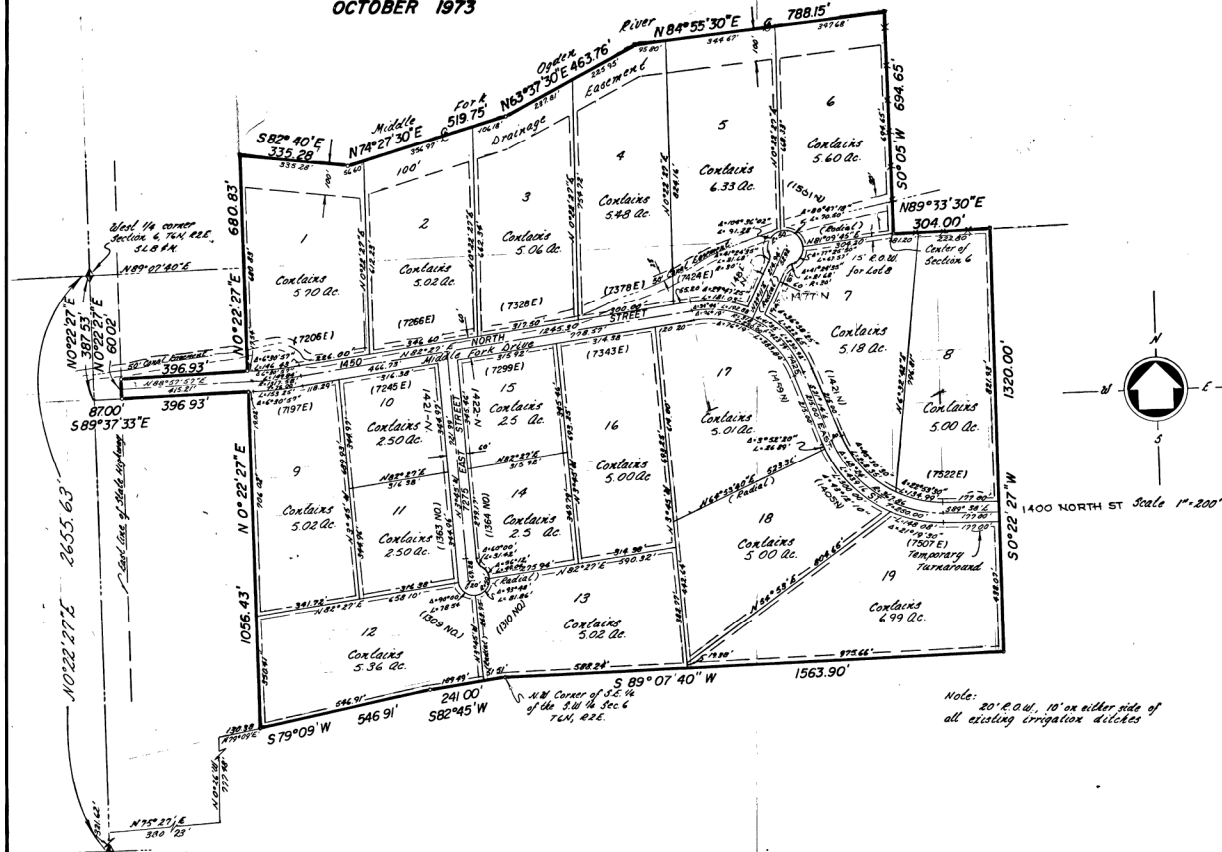


MIDDLE FORK RANCHES

A PART OF SECTION 6, T6N, R2E S.L.B. & M. U.S. SURVEY

WEBER COUNTY, UTAH

OCTOBER 1973



SURVEYORS CERTIFICATE
 I, Jay E. Osterman, a registered land surveyor in the State of Utah, do hereby certify that this plat of Middle Fork Ranches in Weber County, Utah, has been correctly drawn to the designated scale and is a true and correct representation of the following description of lands included in said subdivision, based on data compiled from records in the Weber County Records Office, and of a survey made on the ground.

Signed this 26th day of OCT 1973
 2430 License No. *J. P. Paul* Signature
 2430 License No. *J. P. Paul* Signature



OWNERS DEDICATION

We the undersigned owners of the hereon described tract of land, hereby set apart and subdivide the same into lots and streets as shown on this plat, and name said tract Middle Fork Ranches and hereby dedicate, grant and convey to Weber County, Utah, all those parts or portions of said tract of land designated as streets, the same to be used as public thoroughfares forever, and also dedicate to Weber County these certain strips as easements for public utility and drainage purposes as shown hereon, the same to be used for the installation, maintenance, and operation of public utility service lines and drainage as may be authorized by Weber County.

Signed this 12th day of APRIL, 1974
 Former Corp. *Fred. Frasier*
 Fred. Frasier, President

ACKNOWLEDGEMENT

State of Utah
 County of _____
 On this day of _____, 1974, personally appeared before me, the undersigned Notary Public, the undersigned Fred. Frasier, Dedication in number, who duly acknowledged to me they signed it freely and voluntarily and for the purposes therein mentioned.

Commission Expires _____ Notary Public
 State of Utah
 County of _____
 On this 12th day of APRIL, 1974, personally appeared before me, Fred. Frasier, and _____, and _____, both being duly sworn, and acknowledged to me he is President of said Corporation and that they signed the Owners Dedication freely, voluntarily and in behalf of said Corporation for the purposes therein mentioned.
 January 22, 1978 *Kathryn A. Johnson*
 Notary Public

BOUNDARY DESCRIPTION

A part of Section 6, T6N, R2E, S.L.B. & M. U.S. Survey; Beginning at a point which is S 22° 27' 15" E 327.57 ft. along the section line and S 89° 37' 35" E 82.00 ft. from the West 1/4 corner of said section 6; Running thence N 0° 22' 27" E 60.02 ft., thence N 89° 37' 35" E 34.75 ft., thence N 0° 22' 27" E 480.85 ft. to the center of the Middle Fork of the Ogden River, thence four courses along the center of said Middle Fork as follows: S 82° 40' E 335.28 ft., N 74° 27' 30" E 519.75 ft., N 83° 47' 30" E 443.76 ft., and N 84° 33' 00" E 788.15 ft. to a fence thence S 0° 05' W 494.45 ft. along said fence to the center of said Sec 6, thence N 89° 37' 35" E 304.00 ft. along a fence thence S 0° 22' 27" E 1,320.00 ft. thence S 89° 07' 40" W 1563.90 ft. to the N.W. Corner of the S.E. 1/4 of the S.W. 1/4 of said section 6, thence S 82° 49' W 241.00 ft. to a point which is North 32° 42 ft. along the section line, 475.25 ft. S 89° 37' 35" E 775.80 ft. and N 70° 00' E 671.29 ft. from the S.W. corner of said Sec 6, thence S 79° 09' W 546.91 ft. thence N 0° 22' 27" E 1056.43 ft. thence S 89° 37' 35" E 376.93 ft. to the point of beginning.

Note: 20' e.o.w., 10' on either side of all existing irrigation ditches

NOTE: Utility and Drainage Easements each side of Property Lines as indicated by dashed lines.
 PREPARED BY: GREAT BASIN ENGINEERING & SURVEYING INC. CIVIL ENGINEERS LAND SURVEYORS Ogden, Utah

WEBER COUNTY ATTORNEY
 I have examined the proposed plat of Middle Fork Ranches and in my opinion it conforms with the county Ordinance applicable thereto and now in force and effect.
 Date 11 APRIL 1974
Robert L. Newley
 County Attorney

WEBER COUNTY ENGINEER
 I hereby certify that I have carefully investigated the lines of Survey of the foregoing plat and legal description of the land embraced therein, and find them to be correct and to agree with the lines and monuments on record in this office.
 Signed this 12th day of APRIL, 1974
Frank W. Malan
 Signature

WEBER COUNTY APPROVAL
 This is to certify that this plat and dedication of this plat were duly approved and accepted by the County Commission of Weber County, Utah this 11th day of APRIL, 1974
 attested
 Title *Kathryn A. Johnson*

WEBER COUNTY PLANNING COMMISSION
 Approved by the Weber County Planning Commission on the 30th day of OCTOBER 1974
Russell W. Jones
 Chairman

614116 #1299
 FILED AND RECORDED FOR
 FRASIER CORP
 1974 APR 29 AM 10 38
 In Book 18 of Plat Page 36
 RUTH EAMES OLSEN
 WEBER COUNTY CLERK
 DEPUTY County Clerk