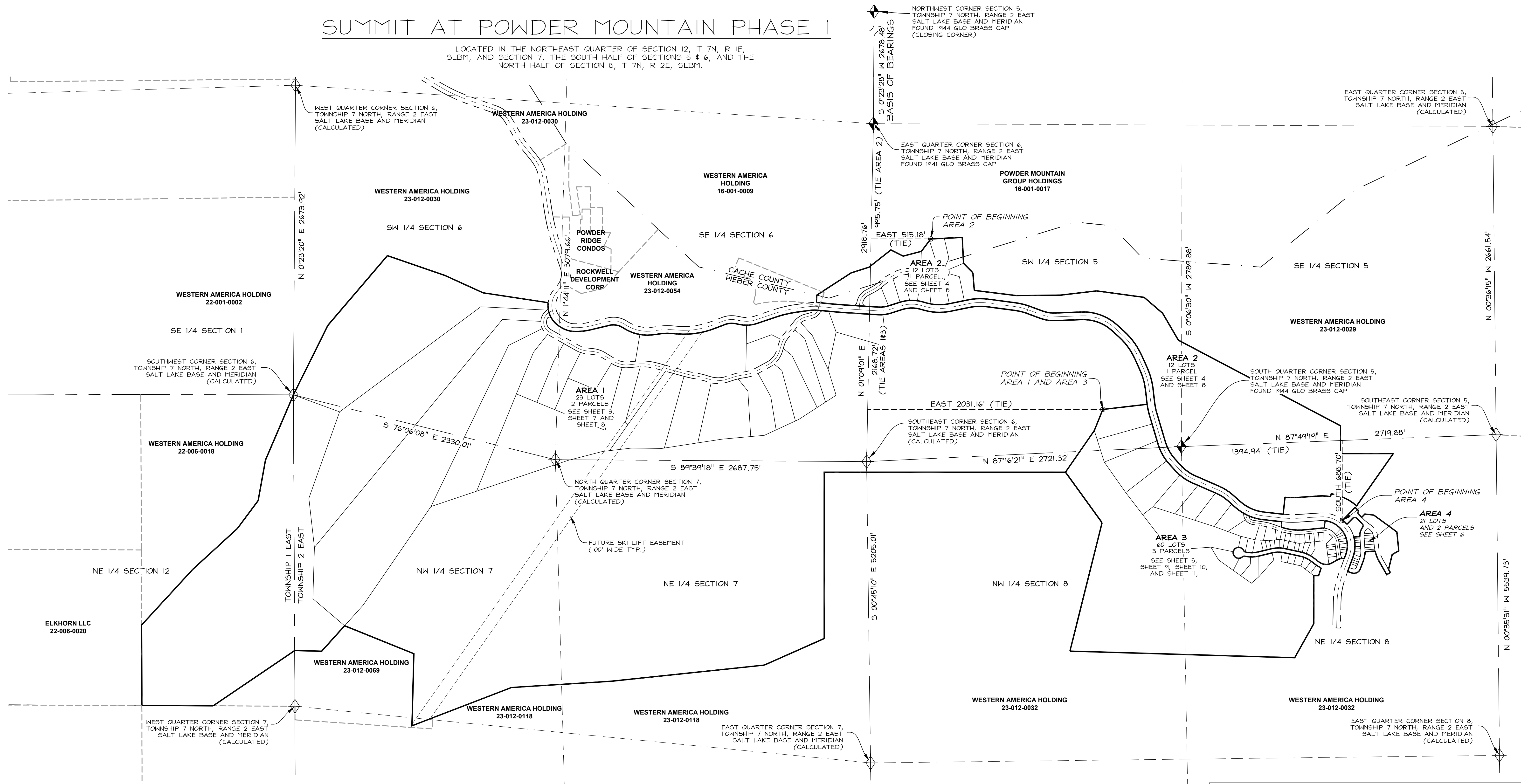


SUMMIT AT POWDER MOUNTAIN PHASE I

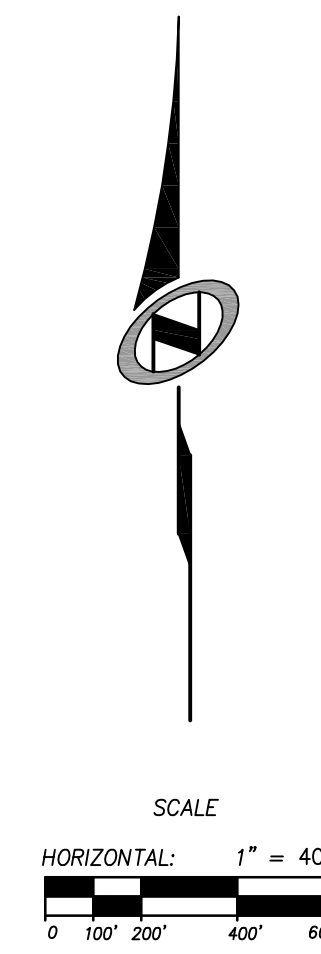
LOCATED IN THE NORTHEAST QUARTER OF SECTION 12, T 7N, R 1E, SLBM, AND SECTION 7, THE SOUTH HALF OF SECTIONS 5 & 6, AND THE NORTH HALF OF SECTION 8, T 7N, R 2E, SLBM.



LEGEND

- BOUNDARY LINE
- LOT LINE
- SECTION LINE
- QUARTER SECTION LINE
- COUNTY LINE
- ADJOINER DEED LINES
- EASEMENT LINE
- AREA TIE LINES

- CALCULATED SECTION CORNER AS NOTED
- SECTION CORNER AS NOTED



SUMMIT AT POWDER MOUNTAIN PHASE I

SECTION BREAKDOWN, BASIS OF BEARINGS AND BOUNDARY OVERVIEW

LOCATED IN THE NORTHEAST QUARTER OF SECTION 12, T 7N, R 1E, SLBM, AND SECTION 7, THE SOUTH HALF OF SECTIONS 5 & 6, AND THE NORTH HALF OF SECTION 8, T 7N, R 2E, SLBM.

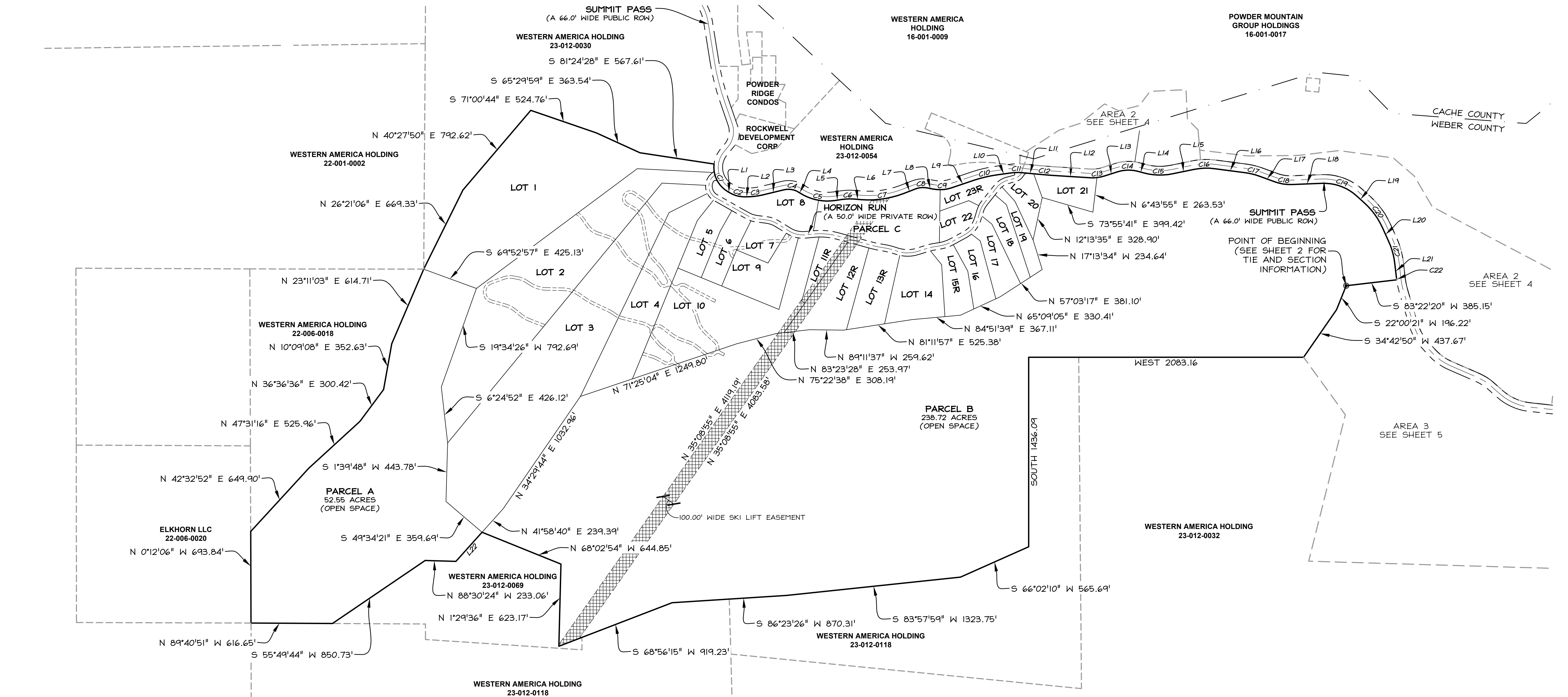
Sheet **2** of 10

NV5 **NOLTE VERTICALFIVE**
 5217 SOUTH STATE STREET, SUITE 300 MURKIN, UT 84107
 801.743.1300 TEL. 801.743.0300 FAX WWW.NOLTE.COM

STATE OF UTAH, COUNTY OF WEBER, RECORDED AND FILED AT THE REQUEST OF: _____ ENTRY NO: _____
 DATE: _____ TIME: _____ BOOK: _____ PAGE: _____
 FEE \$ _____ WEBER COUNTY RECORDER

SUMMIT AT POWDER MOUNTAIN PHASE I

LOCATED IN THE NORTHEAST QUARTER OF SECTION 12, T 7N, R 1E, SLBM, AND SECTION 7, THE SOUTH HALF OF SECTIONS 5 & 6, AND THE NORTH HALF OF SECTION 8, T 7N, R 2E, SLBM.



CURVE TABLE				
CURVE	LENGTH	RADIUS	LONG CHORD	LENGTH
C1	246.37'	213.00'	S 26°23'17\"	232.86'
C2	118.05'	215.83'	S 75°11'36\"	116.58'
C3	107.33'	483.21'	N 82°46'27\"	107.11'
C4	117.62'	147.00'	S 80°40'01\"	114.51'
C5	271.10'	383.00'	S 78°01'21\"	265.47'
C6	93.18'	418.71'	N 88°04'31\"	92.99'
C7	326.41'	733.00'	N 81°41'37\"	323.72'
C8	93.79'	167.00'	N 85°01'33\"	92.56'
C9	147.16'	283.00'	N 86°13'07\"	145.50'
C10	181.70'	967.00'	N 76°42'19\"	181.44'
C11	92.26'	393.15'	N 88°48'39\"	92.04'
C12	101.09'	3056.76'	S 85°24'51\"	101.09'
C13	112.32'	300.82'	N 82°56'30\"	111.67'
C14	152.87'	267.00'	N 88°38'49\"	150.79'
C15	224.93'	483.00'	S 88°17'33\"	222.90'
C16	156.35'	467.00'	N 87°57'27\"	155.62'
C17	101.87'	467.00'	S 76°12'08\"	101.66'
C18	129.12'	333.00'	S 81°03'41\"	128.31'
C19	283.40'	367.00'	S 70°02'50\"	276.41'
C20	233.16'	567.00'	S 36°08'41\"	231.52'
C21	175.52'	567.00'	S 15°29'46\"	174.82'
C22	6.19'	603.42'	S 6°55'18\"	6.19'

LINE TABLE		
LINE	LENGTH	DIRECTION
L1	20.07'	S 59°31'27\"
L2	27.32'	N 89°08'14\"
L3	166.99'	N 76°24'39\"
L4	14.03'	S 57°44'42\"
L5	53.97'	N 81°42'00\"
L6	56.26'	S 85°32'57\"
L7	94.64'	N 68°56'11\"
L8	41.36'	S 78°53'05\"
L9	174.07'	N 71°19'19\"
L10	101.93'	N 82°05'18\"
L11	114.11'	S 84°28'01\"
L12	297.63'	S 86°21'42\"
L13	103.92'	N 72°14'41\"
L14	46.14'	S 74°57'04\"
L15	163.17'	N 78°21'59\"
L16	241.01'	S 82°27'04\"
L17	128.40'	S 69°57'12\"
L18	231.14'	N 87°49'50\"
L19	81.02'	S 47°55'31\"
L20	113.52'	S 24°21'51\"
L21	118.34'	S 6°37'40\"
L22	296.34'	S 41°58'40\"

LEGEND

- BOUNDARY LINE
- LOT LINE
- SECTION LINE
- QUARTER SECTION LINE
- COUNTY LINE
- ADJOINER DEED LINES
- AREA TIE LINES
- CALCULATED SECTION CORNER AS NOTED
- SECTION CORNER AS NOTED
- BUILDABLE AREA
- EASEMENT

SCALE
HORIZONTAL: 1" = 400'
0 100' 200' 400' 600'

SUMMIT AT POWDER MOUNTAIN PHASE I
AREA I BOUNDARY, PARCEL A AND PARCEL B

LOCATED IN THE NORTHEAST QUARTER OF SECTION 12, T 7N, R 1E, SLBM, AND SECTION 7, THE SOUTH HALF OF SECTIONS 5 & 6, AND THE NORTH HALF OF SECTION 8, T 7N, R 2E, SLBM.

Sheet **3** of 10

NV5 **NOLTE VERTICALFIVE**
5217 SOUTH STATE STREET, SUITE 300 MURRAY, UT 84107
801.743.1300 TEL. 801.743.0300 FAX WWW.NOLTE.COM

RECORDED #

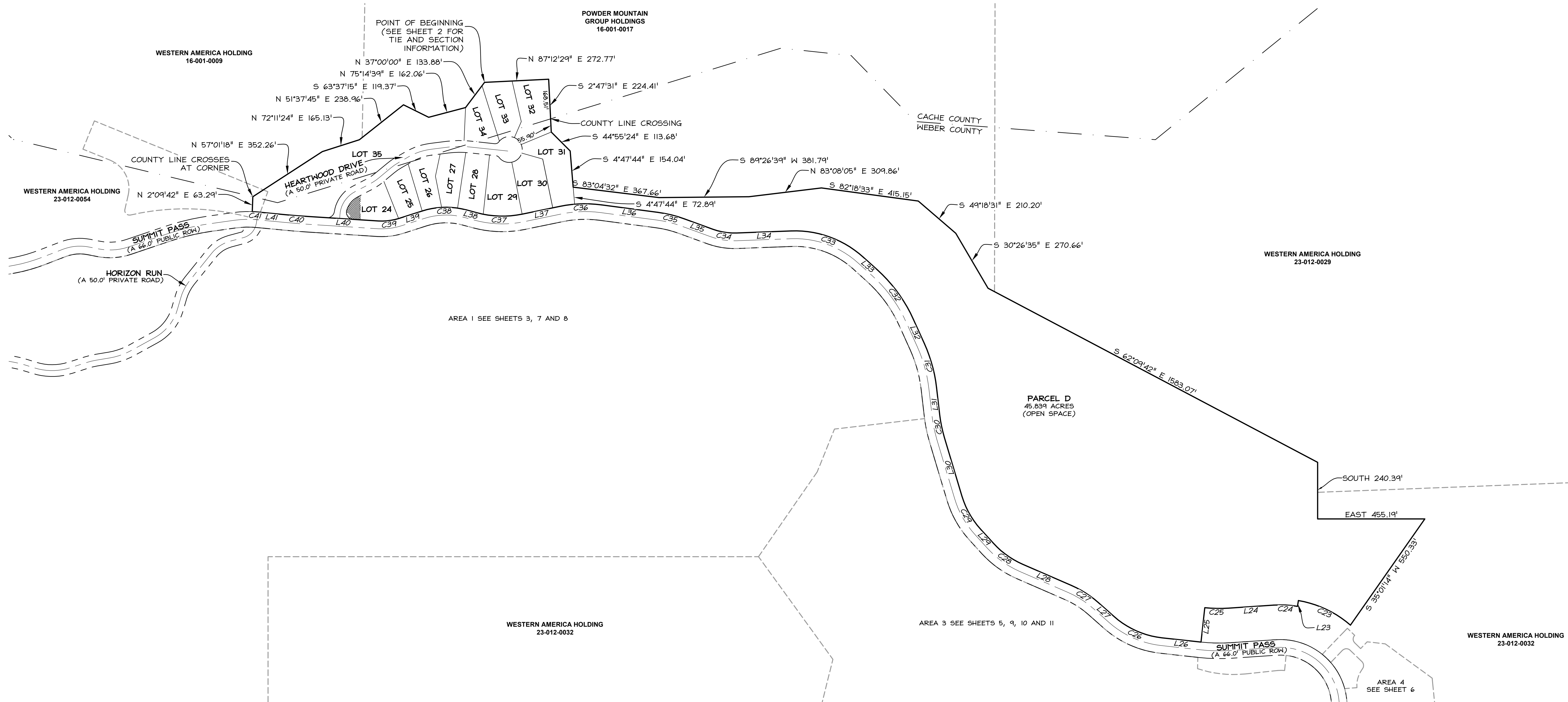
STATE OF UTAH, COUNTY OF WEBER, RECORDED AND FILED AT THE REQUEST OF: _____ ENTRY NO: _____

DATE: _____ TIME: _____ BOOK: _____ PAGE: _____

FEE \$ _____ WEBER COUNTY RECORDER

SUMMIT AT POWDER MOUNTAIN PHASE I

LOCATED IN THE NORTHEAST QUARTER OF SECTION 12, T 7N, R 1E, SLBM, AND SECTION 7, THE SOUTH HALF OF SECTIONS 5 & 6, AND THE NORTH HALF OF SECTION 8, T 7N, R 2E, SLBM.

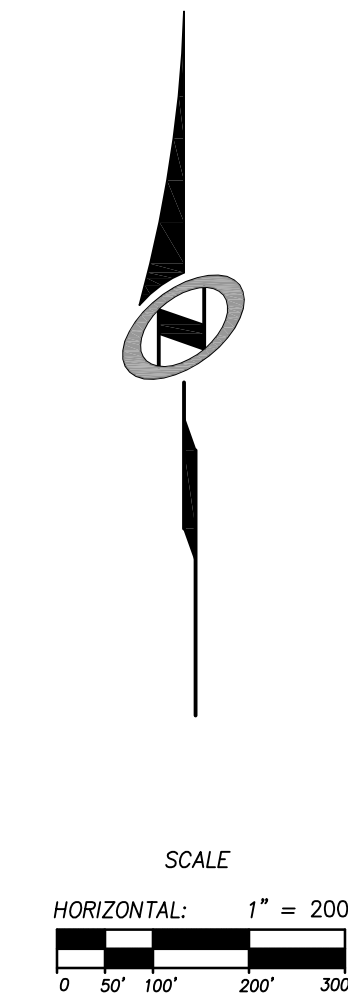


CURVE TABLE				
CURVE	LENGTH	RADIUS	LONG CHORD	LENGTH
C23	247.36'	455.00'	N 64°45'19" W	244.33'
C24	101.19'	430.00'	N 87°04'17" W	100.96'
C25	100.23'	570.00'	N 88°46'32" W	100.10'
C26	225.81'	367.00'	N 66°06'41" W	222.27'
C27	135.97'	433.00'	N 57°28'49" W	135.41'
C28	154.36'	367.00'	N 54°25'37" W	153.22'
C29	164.65'	367.00'	N 29°31'31" W	163.28'
C30	94.21'	537.42'	N 11°39'00" W	94.09'
C31	195.95'	633.00'	N 15°29'46" W	195.17'
C32	260.30'	633.00'	N 36°08'41" W	258.47'
C33	334.37'	433.00'	N 70°02'50" W	326.12'
C34	103.53'	267.00'	N 81°03'41" W	102.88'
C35	116.26'	533.00'	N 76°12'08" W	116.03'
C36	178.45'	533.00'	S 87°57'27" W	177.61'
C37	194.19'	417.00'	N 88°17'33" W	192.44'
C38	190.65'	333.00'	S 88°38'49" W	188.06'
C39	87.68'	234.82'	S 82°56'30" W	87.17'
C40	98.91'	2990.76'	N 85°24'51" W	98.90'
C41	27.02'	459.15'	N 86°09'09" W	27.01'

LINE TABLE		
LINE	LENGTH	DIRECTION
L23	25.00'	S 9°40'13" W
L24	193.22'	S 86°11'14" W
L25	147.00'	S 6°15'42" W
L26	166.47'	N 83°44'18" W
L27	89.38'	N 48°29'04" W
L28	225.95'	N 66°28'34" W
L29	79.01'	N 42°22'41" W
L30	261.55'	N 16°40'20" W
L31	118.34'	N 6°37'40" W
L32	113.52'	N 24°21'51" W
L33	81.02'	N 47°55'31" W
L34	231.14'	S 87°49'50" W
L35	128.40'	N 69°57'12" W
L36	241.01'	N 82°27'04" W
L37	163.17'	N 78°21'59" E
L38	46.14'	N 74°57'04" W
L39	103.92'	S 72°14'41" W
L40	297.63'	N 86°21'42" W
L41	114.11'	N 84°28'01" W

LEGEND

- BOUNDARY LINE
- LOT LINE
- SECTION LINE
- QUARTER SECTION LINE
- COUNTY LINE
- ADJOINER DEED LINES
- AREA TIE LINES
- CALCULATED SECTION CORNER AS NOTED
- SECTION CORNER AS NOTED
- BUILDABLE AREA
- EASEMENT



SUMMIT AT POWDER MOUNTAIN PHASE I

AREA 2 BOUNDARY & PARCEL D

LOCATED IN THE NORTHEAST QUARTER OF SECTION 12, T 7N, R 1E, SLBM, AND SECTION 7, THE SOUTH HALF OF SECTIONS 5 & 6, AND THE NORTH HALF OF SECTION 8, T 7N, R 2E, SLBM.

Sheet 4 of 10

NV5

NOLTE VERTICALFIVE

5217 SOUTH STATE STREET, SUITE 300 MURKIN, UT 84107
801.743.1300 TEL. 801.743.0300 FAX WWW.NOLTE.COM

RECORDED #

STATE OF UTAH, COUNTY OF WEBER, RECORDED AND FILED AT THE REQUEST OF: _____ ENTRY NO: _____

DATE: _____ TIME: _____ BOOK: _____ PAGE: _____

FEE \$ _____ WEBER COUNTY RECORDER

XREFS:

SUMMIT AT POWDER MOUNTAIN PHASE 1

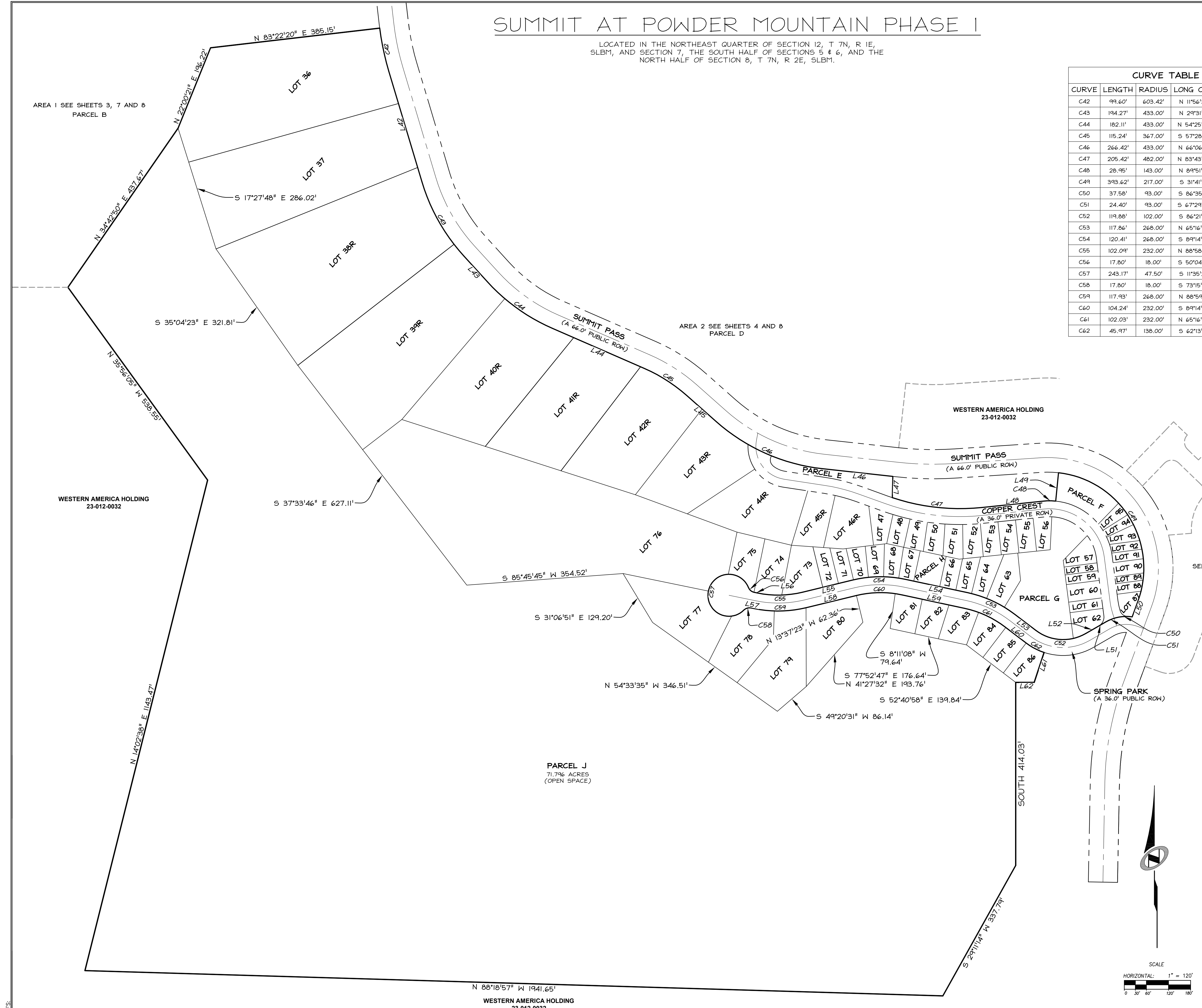
LOCATED IN THE NORTHEAST QUARTER OF SECTION 12, T 7N, R 1E, SLBM, AND SECTION 7, THE SOUTH HALF OF SECTIONS 5 & 6, AND THE NORTH HALF OF SECTION 8, T 7N, R 2E, SLBM.

CURVE TABLE				
CURVE	LENGTH	RADIUS	LONG CHORD	LENGTH
C42	99.60'	603.42'	N 11°56'38" W	99.48'
C43	194.27'	433.00'	N 29°31'31" W	192.64'
C44	182.11'	433.00'	N 54°25'37" W	180.78'
C45	115.24'	367.00'	S 57°28'49" E	114.77'
C46	266.42'	433.00'	N 66°06'41" W	262.24'
C47	205.42'	482.00'	N 83°43'36" W	203.87'
C48	28.95'	143.00'	N 89°51'47" E	28.90'
C49	393.62'	217.00'	S 31°41'30" E	341.83'
C50	37.58'	93.00'	S 86°35'01" W	37.32'
C51	24.40'	93.00'	S 67°29'35" W	24.33'
C52	119.88'	102.00'	S 86°21'04" E	113.10'
C53	117.86'	268.00'	N 65°16'53" W	116.91'
C54	120.41'	268.00'	S 89°14'55" W	119.40'
C55	102.04'	232.00'	N 88°58'58" E	101.27'
C56	17.80'	18.00'	S 50°04'54" E	17.08'
C57	243.17'	47.50'	S 11°35'20" W	52.21'
C58	17.80'	18.00'	S 73°15'33" W	17.08'
C59	117.93'	268.00'	N 88°59'01" E	116.98'
C60	104.24'	232.00'	S 89°14'55" W	103.36'
C61	102.03'	232.00'	N 65°16'53" W	101.21'
C62	45.97'	138.00'	S 62°13'30" E	45.75'

LINE TABLE		
LINE	LENGTH	DIRECTION
L42	261.55'	S 16°40'20" E
L43	79.01'	S 42°22'41" E
L44	225.95'	S 66°28'34" E
L45	89.38'	S 48°29'04" E
L46	160.34'	S 83°44'18" E
L47	47.96'	S 1°26'03" W
L48	138.80'	N 84°03'51" E
L49	64.51'	N 5°39'44" E
L50	37.40'	S 20°16'24" W
L51	28.58'	S 59°58'41" W
L52	23.81'	S 59°58'41" W
L53	59.72'	N 52°40'58" W
L54	144.40'	N 77°52'47" W
L55	117.26'	S 76°22'37" W
L56	7.67'	N 78°24'40" W
L57	7.67'	S 78°24'40" E
L58	117.26'	N 76°22'37" E
L59	144.40'	S 77°52'47" E
L60	59.72'	S 52°40'58" E
L61	71.30'	N 18°13'59" E
L62	41.88'	N 90°00'00" E

LEGEND

- BOUNDARY LINE
- LOT LINE
- SECTION LINE
- QUARTER SECTION LINE
- COUNTY LINE
- ADJOINER DEED LINES
- AREA TIE LINES
- CALCULATED SECTION CORNER AS NOTED
- SECTION CORNER AS NOTED
- BUILDABLE AREA
- EASEMENT



**SUMMIT AT POWDER MOUNTAIN
PHASE 1
AREA 3 BOUNDARY AND
PARCEL H**

LOCATED IN THE NORTHEAST QUARTER OF SECTION 12, T 7N, R 1E, SLBM, AND SECTION 7, THE SOUTH HALF OF SECTIONS 5 & 6, AND THE NORTH HALF OF SECTION 8, T 7N, R 2E, SLBM.

Sheet **5** of 10

NV5 **NOLTE VERTICALFIVE**

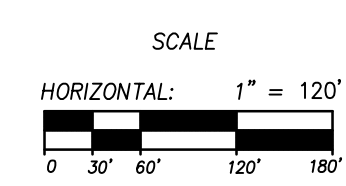
5217 SOUTH STATE STREET, SUITE 300
801.743.1300 TEL. 801.743.0300 FAX
MURRAY, UT 84107
WWW.NOLTE.COM

RECORDED # _____

STATE OF UTAH, COUNTY OF WEBER, RECORDED AND FILED AT THE REQUEST OF: _____ ENTRY NO: _____

DATE: _____ TIME: _____ BOOK: _____ PAGE: _____

FEE \$ _____ WEBER COUNTY RECORDER



XREFS:

SUMMIT AT POWDER MOUNTAIN PHASE I

LOCATED IN THE NORTHEAST QUARTER OF SECTION 12, T 7N, R 1E, SLBM, AND SECTION 7, THE SOUTH HALF OF SECTIONS 5 & 6, AND THE NORTH HALF OF SECTION 8, T 7N, R 2E, SLBM.

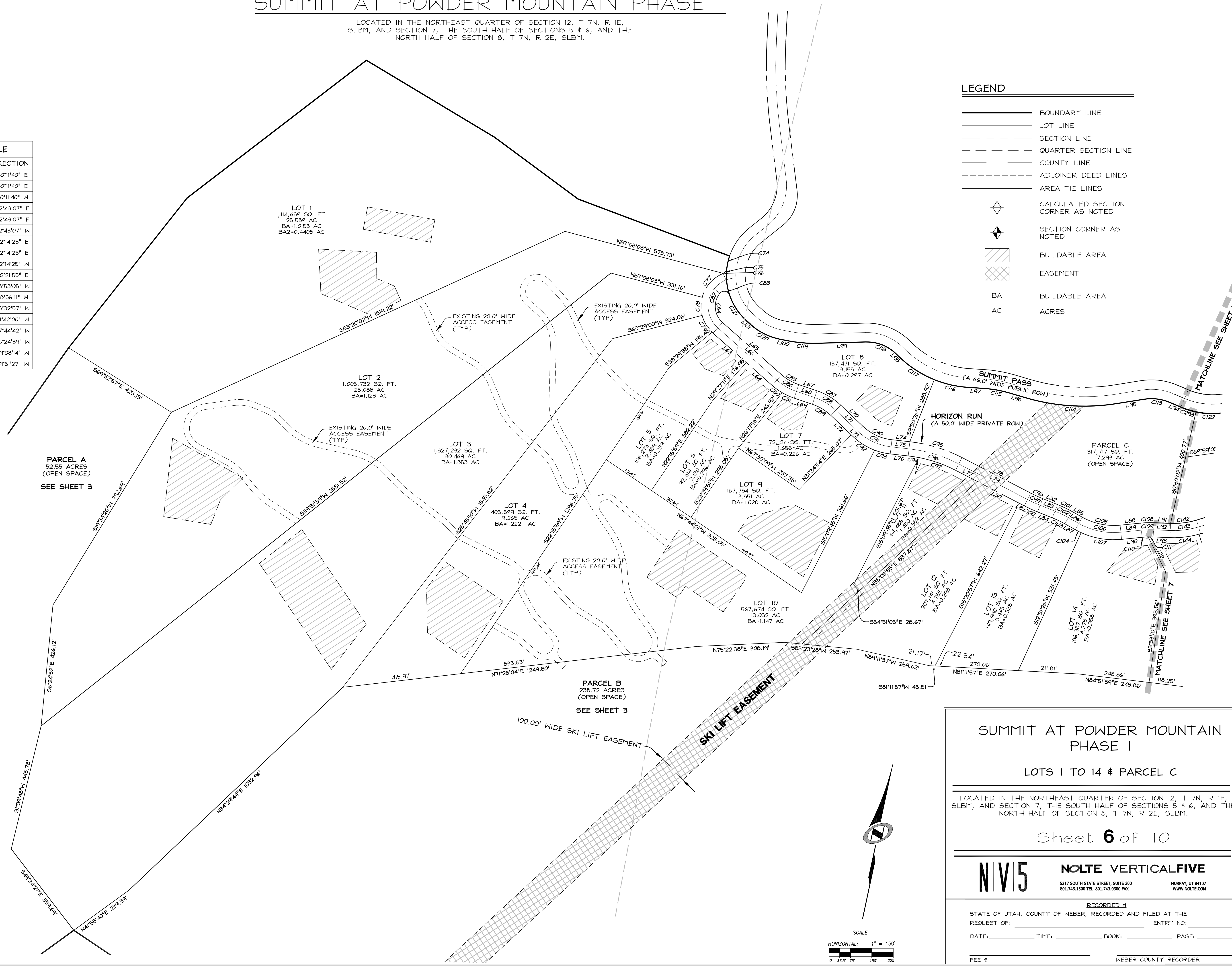
LINE	LENGTH	DIRECTION
L63	155.25'	N 60°32'49" W
L64	121.35'	N 60°32'49" W
L65	276.60'	S 60°32'49" E
L66	276.60'	S 60°32'49" E
L67	67.47'	S 83°22'38" E
L68	67.47'	S 83°22'38" E
L69	67.47'	N 83°22'38" W
L70	107.81'	S 58°25'06" E
L71	107.81'	S 58°25'06" E
L72	98.53'	N 58°25'06" W
L73	9.28'	N 58°25'06" W
L74	63.25'	N 84°20'22" E
L75	63.25'	N 84°20'22" E
L76	63.25'	S 84°20'22" W
L77	85.26'	N 74°39'03" W
L78	271.59'	S 74°39'03" E
L79	271.59'	S 74°39'03" E
L80	165.94'	N 74°39'03" W
L81	20.39'	N 74°39'03" W

LINE	LENGTH	DIRECTION
L82	55.85'	S 80°11'40" E
L83	55.85'	S 80°11'40" E
L84	55.85'	N 80°11'40" W
L85	42.25'	S 72°43'07" E
L86	42.25'	S 72°43'07" E
L87	42.25'	N 72°43'07" W
L88	72.15'	N 72°14'25" E
L89	72.15'	N 72°14'25" E
L90	72.15'	S 72°14'25" W
L91	58.94'	N 80°21'55" E
L94	41.36'	N 78°53'05" W
L95	94.64'	S 68°56'11" W
L96	56.26'	N 85°32'57" W
L97	53.97'	S 81°42'00" W
L98	14.03'	N 57°44'42" W
L99	166.99'	S 76°24'39" W
L100	27.32'	S 89°08'14" W
L101	20.07'	N 59°31'27" W

CURVE	LENGTH	RADIUS	LONG CHORD	LENGTH
C74	45.95'	213.00'	N 24°34'06" W	45.86'
C75	21.20'	20.00'	N 24°45'19" E	20.22'
C76	0.26'	20.00'	N 55°29'54" E	0.26'
C77	115.65'	125.00'	S 29°22'12" W	111.57'
C78	64.10'	125.00'	S 11°49'31" E	63.40'
C79	69.49'	125.00'	S 42°26'34" E	68.60'
C80	43.66'	225.00'	S 66°06'19" E	43.59'
C81	46.00'	225.00'	S 77°31'14" E	45.92'
C82	238.95'	100.00'	S 7°54'24" W	186.02'
C83	43.21'	20.00'	S 87°20'05" W	35.28'
C84	112.55'	75.00'	S 17°33'18" E	102.28'
C85	69.73'	175.00'	S 71°57'44" E	69.27'
C86	79.69'	200.00'	S 71°57'44" E	79.17'
C87	98.01'	225.00'	N 70°53'52" W	97.24'
C88	87.12'	200.00'	N 70°53'52" W	86.44'
C89	76.23'	175.00'	N 70°53'52" W	75.63'
C90	113.75'	175.00'	S 77°02'22" E	111.76'
C91	130.00'	200.00'	S 77°02'22" E	127.72'
C92	89.53'	225.00'	S 69°49'03" E	88.94'
C93	56.72'	225.00'	S 88°26'19" E	56.57'
C94	37.87'	475.00'	S 86°37'24" W	37.86'
C95	192.51'	525.00'	N 85°09'21" W	191.44'
C96	183.35'	500.00'	N 85°09'21" W	182.32'
C97	136.31'	475.00'	N 82°52'18" W	135.84'
C98	45.96'	475.00'	S 77°25'21" E	45.94'
C99	48.38'	500.00'	S 77°25'21" E	48.36'
C100	50.80'	525.00'	S 77°25'21" E	50.78'
C101	55.45'	425.00'	N 76°27'23" W	55.41'
C102	52.19'	400.00'	N 76°27'23" W	52.15'
C103	48.93'	375.00'	N 76°27'23" W	48.89'
C104	22.83'	275.00'	S 75°05'50" E	22.83'
C105	137.61'	225.00'	N 89°45'39" E	135.47'
C106	152.90'	250.00'	N 89°45'39" E	150.52'
C107	145.35'	275.00'	N 87°22'55" E	143.67'
C108	46.09'	325.00'	S 76°18'10" W	46.05'
C109	42.54'	300.00'	S 76°18'10" W	42.51'
C110	21.01'	275.00'	S 74°25'42" W	21.00'
C111	17.99'	275.00'	S 78°29'28" W	17.99'
C113	93.79'	167.00'	S 85°01'33" W	92.56'
C114	326.41'	733.00'	N 81°41'37" E	323.72'
C115	93.18'	418.71'	S 88°04'31" W	92.99'
C116	122.41'	383.00'	S 89°08'39" E	121.89'
C117	148.69'	383.00'	S 68°52'00" E	147.76'
C118	117.62'	147.00'	N 80°40'01" W	114.51'
C119	107.33'	483.21'	N 82°46'27" E	107.11'
C120	118.05'	215.83'	S 75°11'37" E	116.58'
C121	106.90'	213.00'	S 45°08'45" E	105.79'

LEGEND

- BOUNDARY LINE
- LOT LINE
- - - SECTION LINE
- - - QUARTER SECTION LINE
- - - COUNTY LINE
- - - ADJOINER DEED LINES
- - - AREA TIE LINES
- ◊ CALCULATED SECTION CORNER AS NOTED
- ◊ SECTION CORNER AS NOTED
- ▨ BUILDABLE AREA
- ▩ EASEMENT
- BA BUILDABLE AREA
- AC ACRES



SUMMIT AT POWDER MOUNTAIN PHASE I

LOTS 1 TO 14 & PARCEL C

LOCATED IN THE NORTHEAST QUARTER OF SECTION 12, T 7N, R 1E, SLBM, AND SECTION 7, THE SOUTH HALF OF SECTIONS 5 & 6, AND THE NORTH HALF OF SECTION 8, T 7N, R 2E, SLBM.

Sheet **6** of 10

NV5 **NOLTE VERTICALFIVE**

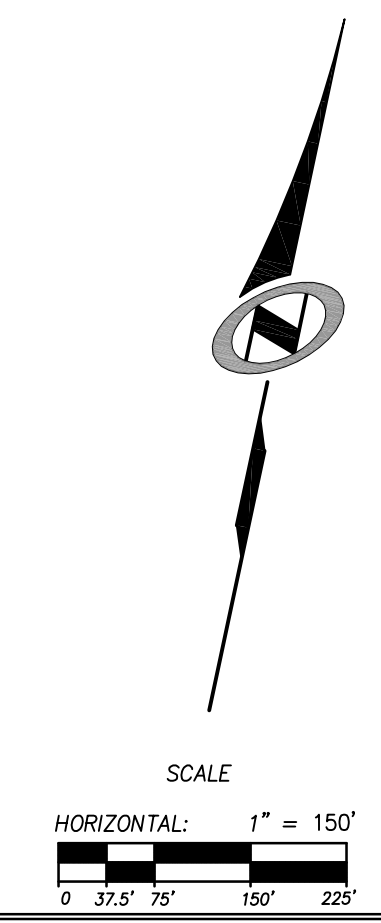
5217 SOUTH STATE STREET, SUITE 300
801.743.1300 TEL 801.743.0300 FAX MURKIN UT 84107
WWW.NOLTE.COM

RECORDED # _____

STATE OF UTAH, COUNTY OF WEBER, RECORDED AND FILED AT THE REQUEST OF: _____ ENTRY NO: _____

DATE: _____ TIME: _____ BOOK: _____ PAGE: _____

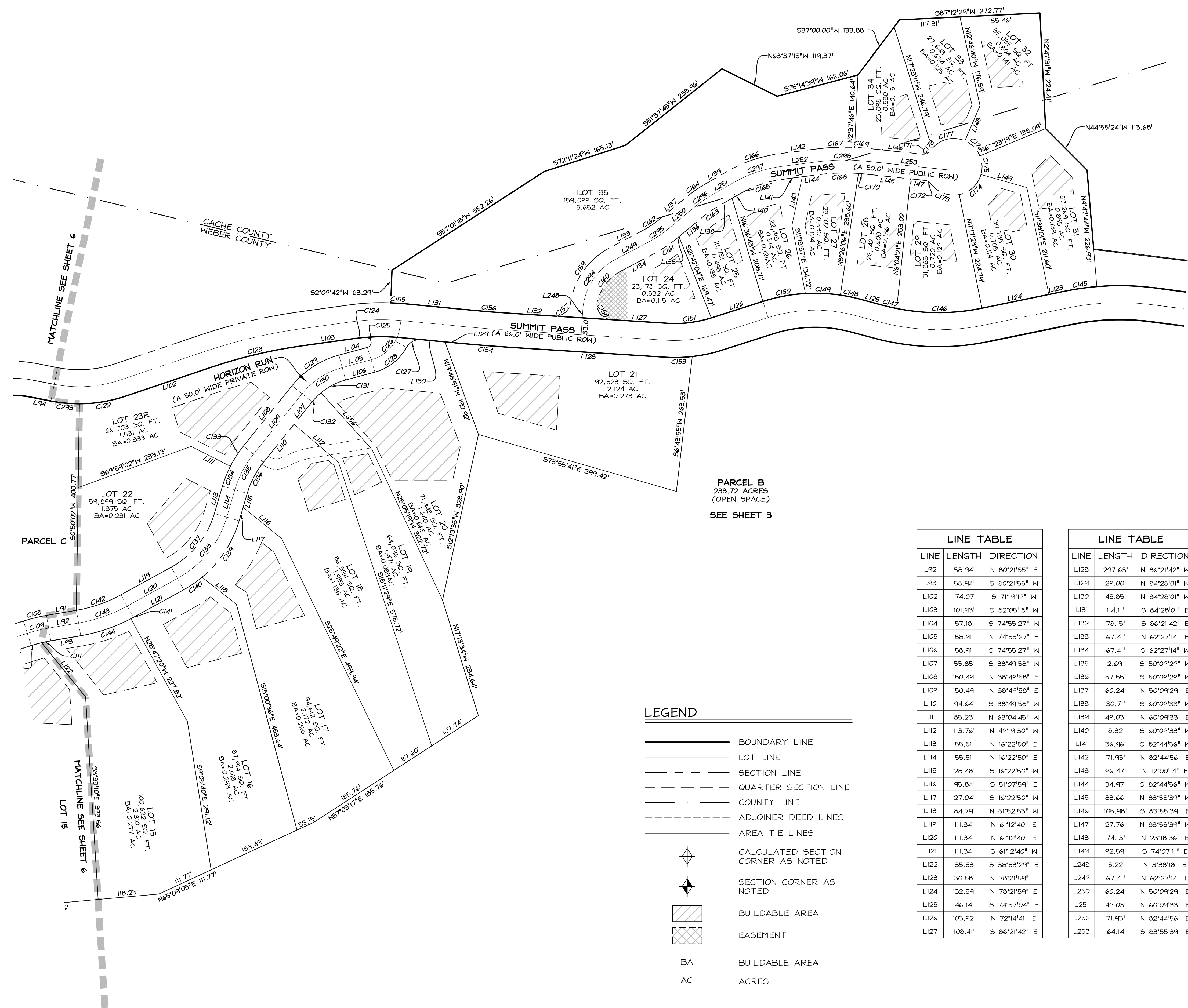
FEE \$ _____ WEBER COUNTY RECORDER



XREFS:

SUMMIT AT POWDER MOUNTAIN PHASE I

LOCATED IN THE NORTHEAST QUARTER OF SECTION 12, T 7N, R 1E, SLBM, AND SECTION 7, THE SOUTH HALF OF SECTIONS 5 & 6, AND THE NORTH HALF OF SECTION 8, T 7N, R 2E, SLBM.



CURVE TABLE				
CURVE	LENGTH	RADIUS	LONG CHORD	LENGTH
C111	17.99'	275.00'	S 78°29'28" W	17.99'
C122	91.54'	283.00'	N 80°35'36" E	91.19'
C123	181.70'	967.00'	S 76°42'19" W	181.44'
C124	22.75'	393.15'	S 83°44'45" W	22.75'
C125	29.59'	10.00'	N 9°50'10" W	19.92'
C126	86.20'	75.00'	N 41°59'48" E	81.54'
C127	34.76'	30.00'	S 62°20'24" W	32.85'
C128	79.90'	100.00'	N 52°02'08" E	77.79'
C129	110.23'	175.00'	S 56°52'43" W	108.42'
C130	94.49'	150.00'	S 56°52'43" W	92.93'
C131	54.19'	125.00'	S 62°30'21" W	53.76'
C132	24.55'	125.00'	S 44°27'36" W	24.51'
C133	46.78'	225.00'	S 32°52'37" W	46.69'
C134	41.39'	225.00'	S 21°39'02" W	41.33'
C135	78.37'	200.00'	S 27°36'24" W	77.87'
C136	68.58'	175.00'	S 27°36'24" W	68.14'
C137	136.93'	175.00'	N 38°47'45" E	133.46'
C138	156.49'	200.00'	N 38°47'45" E	152.53'
C139	132.96'	225.00'	N 33°18'36" E	131.04'
C140	43.08'	225.00'	N 55°43'31" E	43.02'
C141	5.58'	325.00'	N 61°42'10" E	5.58'
C142	91.93'	275.00'	N 70°47'17" E	91.51'
C143	100.29'	300.00'	N 70°47'17" E	99.83'
C144	103.07'	325.00'	N 71°16'48" E	102.64'
C145	63.61'	533.00'	S 81°47'07" W	63.57'
C146	166.44'	417.00'	N 89°48'02" E	165.33'
C147	27.76'	417.00'	S 76°51'29" E	27.75'
C148	38.44'	333.00'	N 78°15'29" E	38.42'
C149	67.91'	333.00'	N 87°24'27" W	67.80'
C150	84.30'	333.00'	S 79°29'51" W	84.08'
C151	87.68'	234.82'	N 82°56'30" E	87.17'
C153	52.85'	300.82'	N 88°36'20" E	52.78'

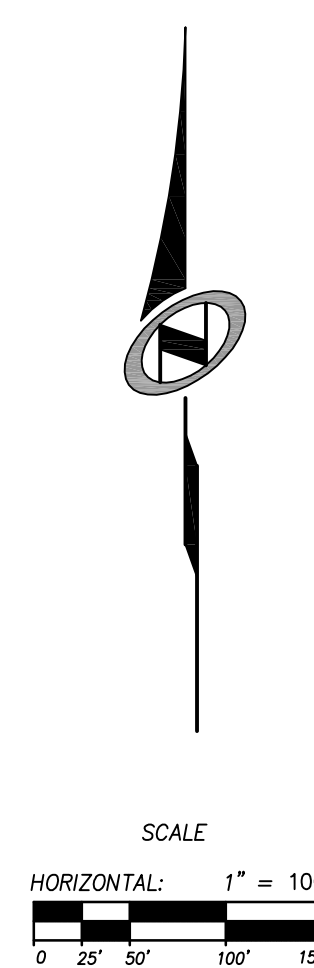
CURVE TABLE				
CURVE	LENGTH	RADIUS	LONG CHORD	LENGTH
C154	101.09'	3056.76'	S 85°24'51" E	101.09'
C155	27.02'	459.15'	N 86°09'09" W	27.01'
C156	98.91'	2990.76'	S 85°24'51" E	98.90'
C157	44.59'	30.00'	N 51°03'40" E	40.60'
C158	54.01'	30.00'	S 34°47'21" E	47.00'
C159	136.58'	145.00'	S 35°28'08" W	131.59'
C160	75.72'	95.00'	S 39°37'07" W	73.74'
C161	59.02'	275.00'	N 56°18'22" E	58.90'
C162	48.29'	225.00'	N 56°18'22" E	48.19'
C163	39.27'	225.00'	S 55°09'31" W	39.22'
C164	48.00'	275.00'	S 55°09'31" W	47.94'
C165	88.71'	225.00'	S 71°27'14" W	88.14'
C166	108.42'	275.00'	S 71°27'14" W	107.72'
C167	73.29'	425.00'	S 87°41'21" W	73.20'
C168	74.35'	375.00'	S 88°25'44" W	74.23'
C169	25.54'	425.00'	N 85°38'57" W	25.53'
C170	12.85'	375.00'	N 84°54'34" W	12.85'
C171	19.01'	18.00'	N 65°48'35" E	18.14'
C172	14.67'	18.00'	N 60°35'11" W	14.26'
C173	61.48'	55.00'	S 69°16'03" E	58.33'
C174	60.31'	55.00'	N 47°17'43" E	57.34'
C175	36.95'	55.00'	N 3'21'56" W	36.26'
C176	42.31'	55.00'	N 44°39'02" W	41.28'
C177	70.00'	55.00'	S 76°50'57" W	65.37'
C178	4.65'	55.00'	S 37°58'04" W	4.65'
C293	55.57'	283.00'	S 84°30'36" E	55.48'
C294	123.18'	120.00'	S 33°02'46" W	117.85'
C295	53.65'	250.00'	N 56°18'22" E	53.55'
C296	43.64'	250.00'	S 55°09'31" W	43.58'
C297	98.57'	250.00'	S 71°27'14" W	97.93'
C298	93.02'	400.00'	S 84°24'38" W	92.81'

PARCEL B
238.72 ACRES
(OPEN SPACE)
SEE SHEET 3

LINE TABLE		
LINE	LENGTH	DIRECTION
L92	58.94'	N 80°21'55" E
L93	58.94'	S 80°21'55" W
L102	174.07'	S 71°19'19" W
L103	101.93'	S 82°05'18" W
L104	57.18'	S 74°55'27" W
L105	58.91'	N 74°55'27" E
L106	58.91'	S 74°55'27" W
L107	55.85'	S 38°49'58" W
L108	150.49'	N 38°49'58" E
L109	150.49'	N 38°49'58" E
L110	94.64'	S 38°49'58" W
L111	85.23'	N 63°04'45" W
L112	113.76'	N 49°19'30" W
L113	55.51'	N 16°22'50" E
L114	55.51'	N 16°22'50" E
L115	28.48'	S 16°22'50" W
L116	95.84'	S 51°07'59" E
L117	27.04'	S 16°22'50" W
L118	84.79'	N 51°52'53" W
L119	111.34'	N 61°12'40" E
L120	111.34'	N 61°12'40" E
L121	111.34'	S 61°12'40" W
L122	135.53'	S 38°53'29" E
L123	30.58'	N 78°21'59" E
L124	132.59'	N 78°21'59" E
L125	46.14'	S 74°57'04" E
L126	103.92'	N 72°14'41" E
L127	108.41'	S 86°21'42" E

LINE TABLE		
LINE	LENGTH	DIRECTION
L128	297.63'	N 86°21'42" W
L129	29.00'	N 84°28'01" W
L130	45.85'	N 84°28'01" W
L131	114.11'	S 84°28'01" E
L132	78.15'	S 86°21'42" E
L133	67.41'	N 62°27'14" E
L134	67.41'	S 62°27'14" W
L135	2.69'	S 50°09'29" W
L136	57.55'	S 50°09'29" W
L137	60.24'	N 50°09'29" E
L138	30.71'	S 60°09'33" W
L139	49.03'	N 60°09'33" E
L140	18.32'	S 60°09'33" W
L141	36.96'	S 82°44'56" W
L142	71.93'	N 82°44'56" E
L143	96.47'	N 12°00'14" E
L144	34.97'	S 82°44'56" W
L145	88.66'	N 83°55'39" W
L146	105.98'	S 83°55'39" E
L147	27.76'	N 83°55'39" W
L148	74.13'	N 23°18'36" E
L149	92.59'	S 74°07'11" W
L248	15.22'	N 3°38'18" E
L249	67.41'	N 62°27'14" E
L250	60.24'	N 50°09'29" E
L251	49.03'	N 60°09'33" E
L252	71.93'	N 82°44'56" E
L253	164.14'	S 83°55'39" E

- LEGEND**
- BOUNDARY LINE
 - LOT LINE
 - - - SECTION LINE
 - - - QUARTER SECTION LINE
 - - - COUNTY LINE
 - - - ADJOINER DEED LINES
 - - - AREA TIE LINES
 - ◆ CALCULATED SECTION CORNER AS NOTED
 - ◆ SECTION CORNER AS NOTED
 - ▨ BUILDABLE AREA
 - ▩ EASEMENT
 - BA BUILDABLE AREA
 - AC ACRES



SUMMIT AT POWDER MOUNTAIN PHASE I

LOTS 15 TO 35

LOCATED IN THE NORTHEAST QUARTER OF SECTION 12, T 7N, R 1E, SLBM, AND SECTION 7, THE SOUTH HALF OF SECTIONS 5 & 6, AND THE NORTH HALF OF SECTION 8, T 7N, R 2E, SLBM.

Sheet **7** of 10

NV5 **NOLTE VERTICALFIVE**

5217 SOUTH STATE STREET, SUITE 300
801.743.1300 TEL. 801.743.0300 FAX

MURKIN, UT 84107
WWW.NOLTE.COM

RECORDED #

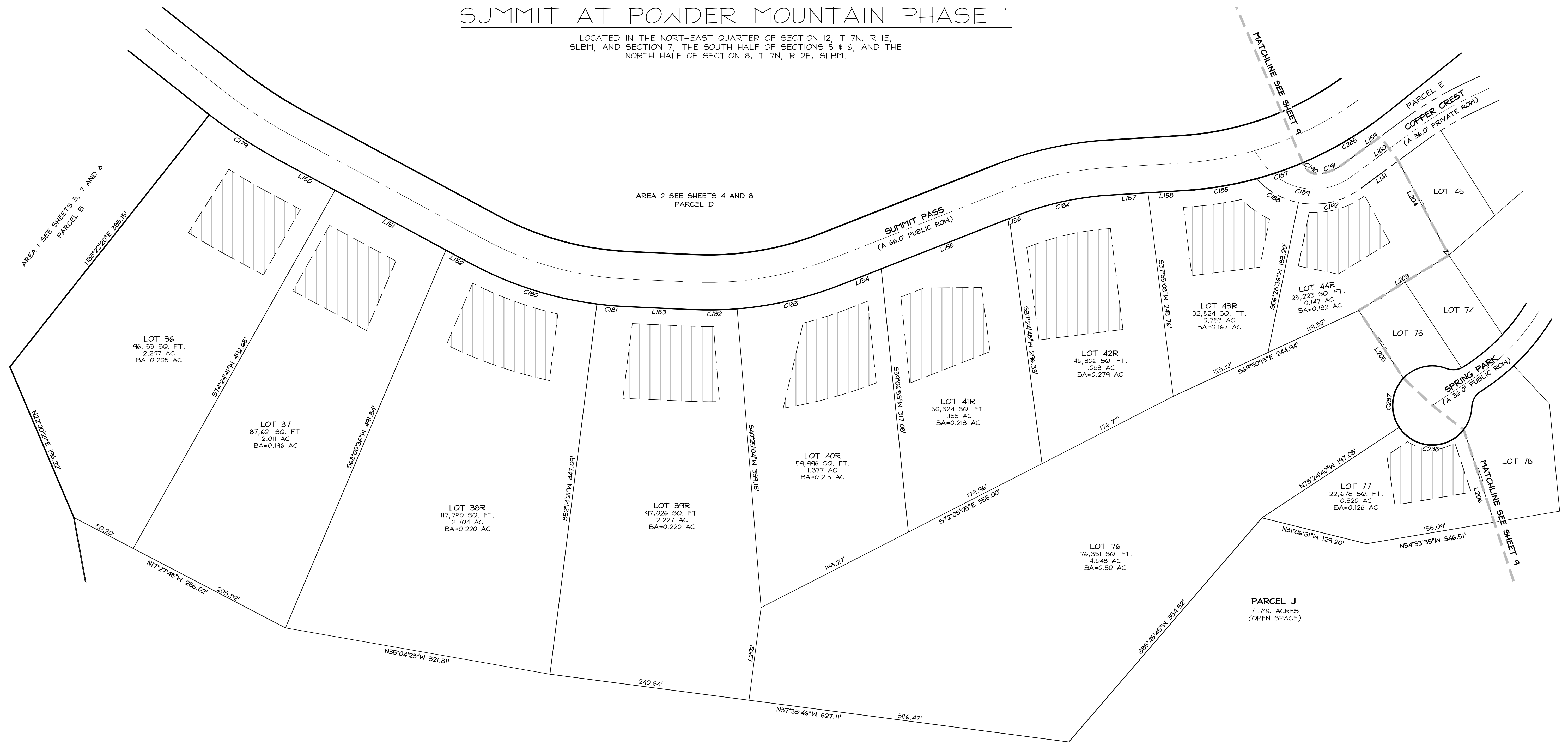
STATE OF UTAH, COUNTY OF WEBER, RECORDED AND FILED AT THE REQUEST OF: _____ ENTRY NO: _____

DATE: _____ TIME: _____ BOOK: _____ PAGE: _____

FEE \$ _____ WEBER COUNTY RECORDER

SUMMIT AT POWDER MOUNTAIN PHASE I

LOCATED IN THE NORTHEAST QUARTER OF SECTION 12, T 7N, R 1E, SLBM, AND SECTION 7, THE SOUTH HALF OF SECTIONS 5 & 6, AND THE NORTH HALF OF SECTION 8, T 7N, R 2E, SLBM.

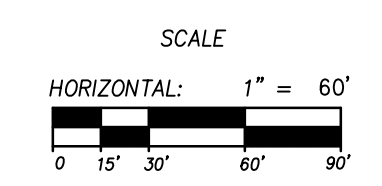
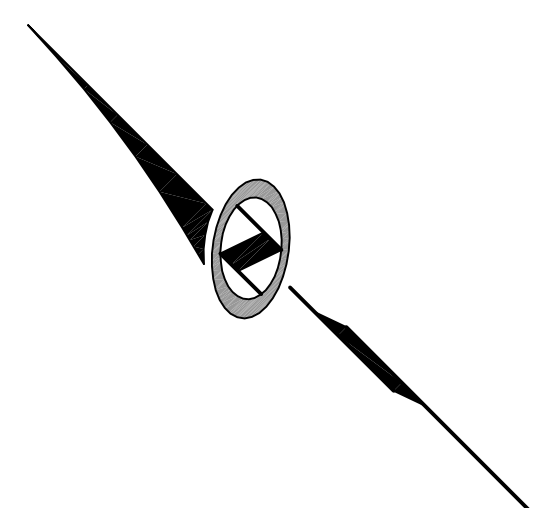


LINE TABLE		
LINE	LENGTH	DIRECTION
L150	76.37'	S 16°40'20" E
L151	150.90'	S 16°40'20" E
L152	34.27'	S 16°40'20" E
L153	79.01'	N 42°22'41" W
L154	52.33'	N 66°28'34" W
L155	165.00'	N 66°28'34" W
L156	8.63'	N 66°28'34" W
L157	46.14'	N 48°29'04" W
L158	43.24'	N 48°29'04" W
L160	93.74'	N 81°19'28" W
L161	57.11'	S 81°19'28" E
L202	111.93'	S 52°26'14" W
L203	126.69'	N 76°28'35" W
L204	128.38'	N 16°46'15" E
L205	97.33'	S 11°35'20" W
L206	116.81'	N 26°45'20" E

CURVE TABLE				
CURVE	LENGTH	RADIUS	LONG CHORD	LENGTH
C179	99.60'	603.42'	S 11°56'38" E	99.48'
C180	159.37'	433.00'	S 27°13'00" E	158.47'
C181	34.89'	433.00'	S 40°04'10" E	34.88'
C182	54.44'	433.00'	S 45°58'49" E	54.41'
C183	127.67'	433.00'	S 58°01'45" E	127.21'
C184	115.24'	367.00'	N 57°28'49" W	114.77'
C185	88.08'	433.00'	S 54°18'44" E	87.93'
C186	120.43'	75.00'	N 35°19'21" W	107.90'
C187	58.96'	433.00'	S 64°02'26" E	58.91'
C188	58.92'	93.00'	S 15°22'27" E	57.94'
C189	120.43'	75.00'	N 35°19'21" W	107.90'
C192	77.59'	93.00'	S 67°25'26" E	75.36'
C237	63.60'	47.50'	S 49°56'56" W	58.96'
C238	90.35'	47.50'	S 42°54'09" E	77.33'

LEGEND

- BOUNDARY LINE
- LOT LINE
- SECTION LINE
- QUARTER SECTION LINE
- COUNTY LINE
- ADJOINER DEED LINES
- AREA TIE LINES
- CALCULATED SECTION CORNER AS NOTED
- SECTION CORNER AS NOTED
- BUILDABLE AREA
- EASEMENT
- BA BUILDABLE AREA
- AC ACRES



SUMMIT AT POWDER MOUNTAIN PHASE I

LOTS 36-44R, 76, & 77.

LOCATED IN THE NORTHEAST QUARTER OF SECTION 12, T 7N, R 1E, SLBM, AND SECTION 7, THE SOUTH HALF OF SECTIONS 5 & 6, AND THE NORTH HALF OF SECTION 8, T 7N, R 2E, SLBM.

Sheet 8 of 10

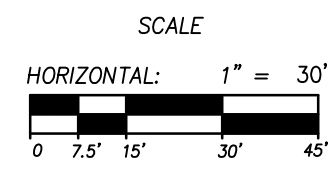
NV5 **NOLTE VERTICALFIVE**
5217 SOUTH STATE STREET, SUITE 300 MURKIN, UT 84107
801.743.1300 TEL. 801.743.0300 FAX WWW.NOLTE.COM

RECORDED #
STATE OF UTAH, COUNTY OF WEBER, RECORDED AND FILED AT THE REQUEST OF: _____ ENTRY NO: _____
DATE: _____ TIME: _____ BOOK: _____ PAGE: _____
FEE \$ _____ WEBER COUNTY RECORDER

SUMMIT AT POWDER MOUNTAIN PHASE I

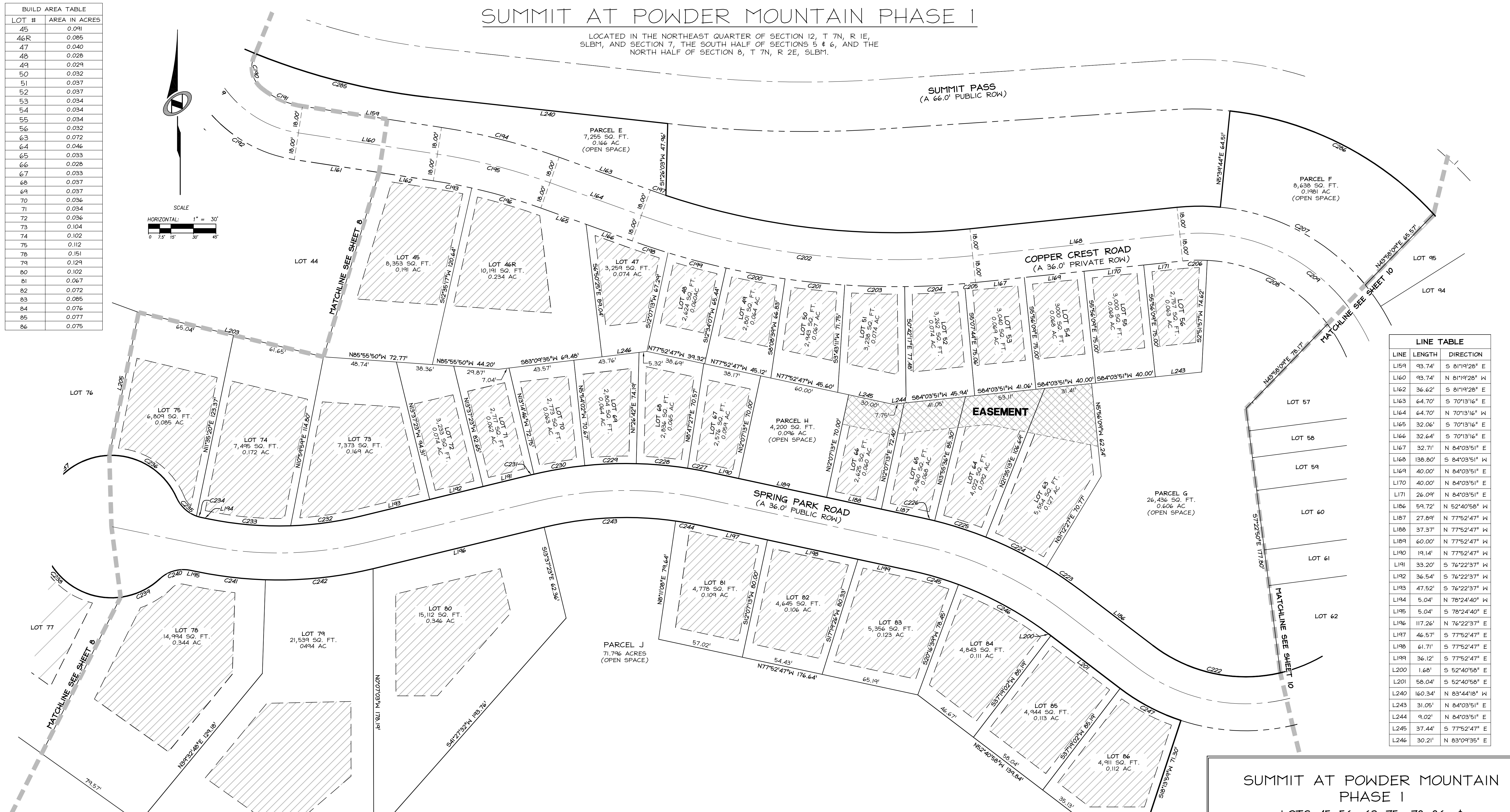
LOCATED IN THE NORTHEAST QUARTER OF SECTION 12, T 7N, R 1E, SLBM, AND SECTION 7, THE SOUTH HALF OF SECTIONS 5 & 6, AND THE NORTH HALF OF SECTION 8, T 7N, R 2E, SLBM.

LOT #	AREA IN ACRES
45	0.091
46R	0.085
47	0.040
48	0.028
49	0.029
50	0.032
51	0.037
52	0.037
53	0.034
54	0.034
55	0.034
56	0.032
63	0.072
64	0.046
65	0.033
66	0.028
67	0.033
68	0.037
69	0.037
70	0.036
71	0.034
72	0.036
73	0.104
74	0.102
75	0.112
78	0.151
79	0.129
80	0.102
81	0.067
82	0.072
83	0.085
84	0.076
85	0.077
86	0.075



SCALE

HORIZONTAL: 1" = 30'



LINE	LENGTH	DIRECTION
L159	93.74'	S 81°19'28" E
L160	93.74'	N 81°19'28" W
L162	36.62'	S 81°19'28" E
L163	64.70'	S 70°13'16" E
L164	64.70'	N 70°13'16" W
L165	32.06'	S 70°13'16" E
L166	32.64'	S 70°13'16" E
L167	32.71'	N 84°03'51" E
L168	138.80'	S 84°03'51" W
L169	40.00'	N 84°03'51" E
L170	40.00'	N 84°03'51" E
L171	26.04'	N 84°03'51" E
L186	59.72'	N 52°40'58" W
L187	27.89'	N 77°52'47" W
L188	37.37'	N 77°52'47" W
L189	60.00'	N 77°52'47" W
L190	19.14'	N 77°52'47" W
L191	33.20'	S 76°22'37" W
L192	36.54'	S 76°22'37" W
L193	47.52'	S 76°22'37" W
L194	5.04'	N 78°24'40" W
L195	5.04'	S 78°24'40" E
L196	117.26'	N 76°22'37" W
L197	46.57'	S 77°52'47" E
L198	61.71'	S 77°52'47" E
L199	36.12'	S 77°52'47" E
L200	1.68'	S 52°40'58" E
L201	58.04'	S 52°40'58" E
L240	160.34'	N 83°44'18" W
L243	31.05'	N 84°03'51" E
L244	9.02'	N 84°03'51" E
L245	37.44'	S 77°52'47" E
L246	30.21'	N 83°09'35" E

CURVE TABLE					CURVE TABLE					CURVE TABLE				
CURVE	LENGTH	RADIUS	LONG CHORD	LENGTH	CURVE	LENGTH	RADIUS	LONG CHORD	LENGTH	CURVE	LENGTH	RADIUS	LONG CHORD	LENGTH
C190	25.68'	18.00'	S 10°23'05" E	23.55'	C206	16.44'	107.00'	S 88°27'54" W	16.42'	C233	55.01'	232.00'	S 85°12'16" E	54.88'
C191	29.92'	57.00'	S 66°17'14" E	29.58'	C207	112.50'	143.00'	N 61°48'04" W	109.62'	C234	3.24'	23.00'	S 74°22'26" E	3.24'
C193	26.09'	382.00'	N 79°22'05" W	26.08'	C208	93.68'	107.00'	N 62°03'10" W	90.72'	C235	18.61'	23.00'	S 47°09'15" E	18.11'
C194	81.00'	418.00'	N 75°46'22" W	80.88'	C209	193.20'	125.00'	N 51°39'30" W	174.53'	C236	56.14'	47.50'	N 57°49'52" W	52.93'
C195	77.52'	400.00'	N 75°46'22" W	77.39'	C222	89.73'	102.00'	S 77°53'04" E	86.86'	C239	29.40'	47.50'	N 64°52'40" E	28.93'
C196	47.94'	382.00'	N 73°49'00" W	47.91'	C223	28.58'	268.00'	N 55°44'15" W	28.56'	C240	21.85'	23.00'	S 74°22'08" W	21.04'
C197	10.90'	482.00'	S 70°52'09" E	10.90'	C224	45.00'	268.00'	N 63°36'10" W	44.95'	C241	45.50'	268.00'	S 83°16'30" E	45.45'
C198	25.19'	518.00'	S 71°36'51" E	25.18'	C225	35.83'	268.00'	N 72°14'36" W	35.80'	C242	72.43'	268.00'	N 84°07'09" E	72.21'
C199	40.00'	518.00'	S 75°13'09" E	39.99'	C226	8.45'	268.00'	N 76°58'36" W	8.45'	C243	88.31'	232.00'	S 87°16'53" W	87.78'
C200	40.00'	518.00'	S 79°38'37" E	39.99'	C227	15.57'	268.00'	N 79°32'40" W	15.57'	C244	15.93'	232.00'	N 79°50'49" W	15.93'
C201	40.00'	518.00'	S 84°04'05" E	39.99'	C228	34.36'	268.00'	N 84°52'56" W	34.34'	C245	33.03'	232.00'	N 73°48'04" W	33.00'
C202	224.40'	500.00'	N 83°04'43" W	222.52'	C229	34.36'	268.00'	S 87°46'20" W	34.34'	C246	69.00'	232.00'	N 61°12'10" W	68.74'
C203	40.00'	518.00'	S 88°24'33" E	39.99'	C230	34.36'	268.00'	S 80°25'36" W	34.34'	C247	45.97'	138.00'	S 62°13'30" E	45.75'
C204	40.00'	518.00'	N 87°05'00" E	39.99'	C231	1.76'	268.00'	S 76°33'55" W	1.76'	C285	119.38'	433.00'	S 75°50'23" E	119.00'
C205	7.29'	518.00'	N 84°28'03" E	7.29'	C232	47.07'	232.00'	N 82°11'23" E	46.99'	C286	155.51'	217.00'	N 63°07'35" W	152.20'

LEGEND

- BOUNDARY LINE
- LOT LINE
- COUNTY LINE
- ADJOINER DEED LINES
- BUILDABLE AREA
- EASEMENT
- BUILDABLE AREA
- ACRES

SUMMIT AT POWDER MOUNTAIN PHASE I
 LOTS 45-56, 63-75, 78-86, & PARCELS E-J

LOCATED IN THE NORTHEAST QUARTER OF SECTION 12, T 7N, R 1E, SLBM, AND SECTION 7, THE SOUTH HALF OF SECTIONS 5 & 6, AND THE NORTH HALF OF SECTION 8, T 7N, R 2E, SLBM.

Sheet **9** of 10

NV5 **NOLTE VERTICALFIVE**
 5217 SOUTH STATE STREET, SUITE 300
 801.743.1300 TEL. 801.743.0300 FAX
 MURKIN, UT 84107
 WWW.NOLTE.COM

RECORDED #

STATE OF UTAH, COUNTY OF WEBER, RECORDED AND FILED AT THE REQUEST OF: _____ ENTRY NO. _____

DATE: _____ TIME: _____ BOOK: _____ PAGE: _____

FEE \$ _____ WEBER COUNTY RECORDER

SUMMIT AT POWDER MOUNTAIN PHASE I

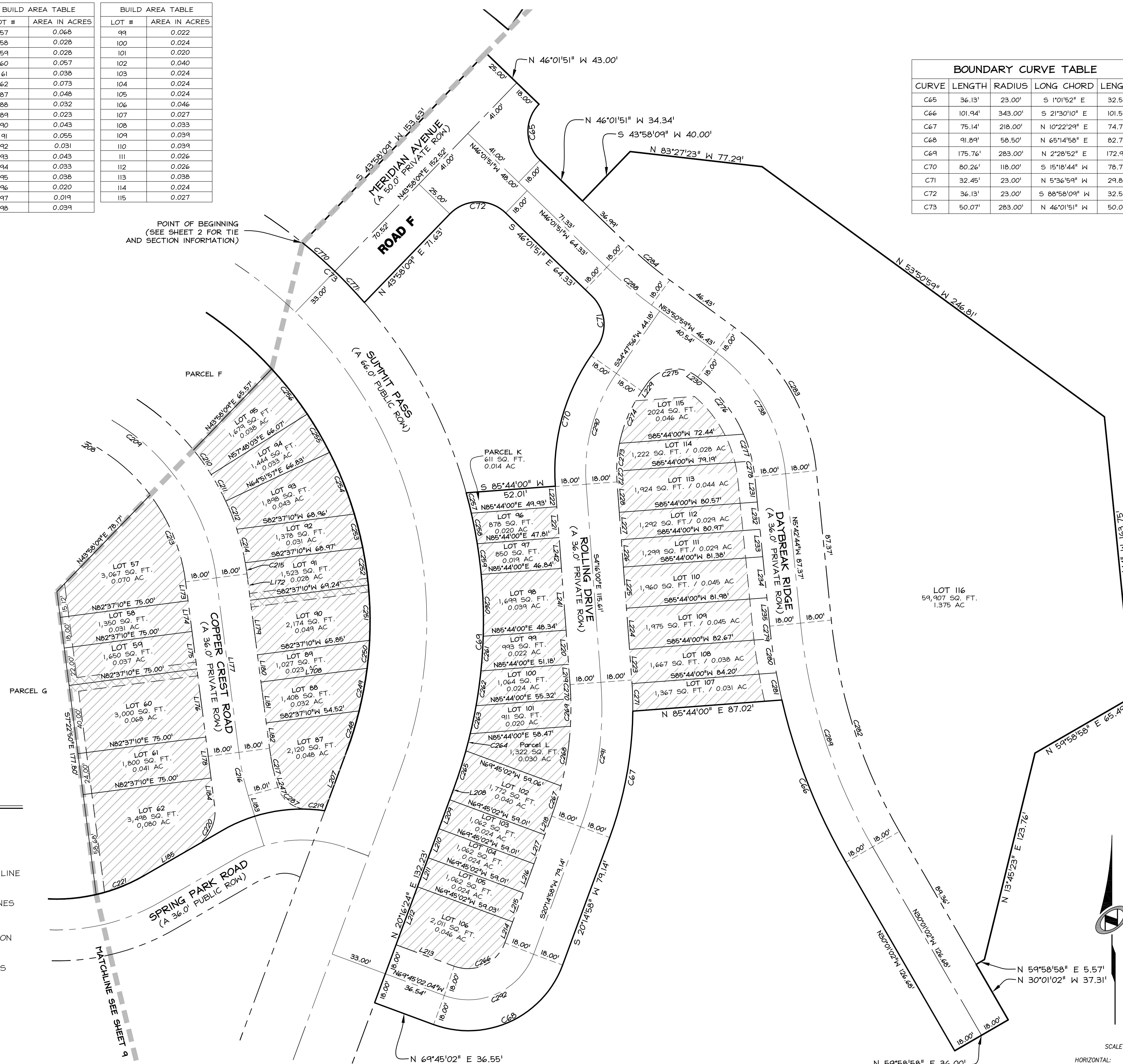
LOCATED IN THE NORTHEAST QUARTER OF SECTION 12, T 7N, R 1E, SLBM, AND SECTION 7, THE SOUTH HALF OF SECTIONS 5 & 6, AND THE NORTH HALF OF SECTION 8, T 7N, R 2E, SLBM.

LINE	LENGTH	DIRECTION
L172	15.48'	S 7°22'50" E
L173	11.11'	S 7°22'50" E
L174	18.00'	S 7°22'50" E
L175	22.00'	S 7°22'50" E
L176	40.00'	S 7°22'50" E
L177	102.39'	N 7°22'50" W
L178	24.00'	S 7°22'50" E
L179	32.00'	S 7°22'50" E
L180	16.00'	S 7°22'50" E
L181	24.00'	S 7°22'50" E
L182	14.92'	S 7°22'50" E
L183	12.54'	N 17°14'04" W
L184	16.86'	S 7°22'50" E
L185	34.38'	S 5°15'41" W
L207	37.40'	N 20°16'24" E
L208	6.23'	S 20°16'24" W
L209	18.00'	S 20°16'24" W
L210	18.00'	S 20°16'24" W
L211	18.00'	S 20°16'24" W
L212	36.00'	S 20°16'24" W
L213	36.04'	N 6°45'02" W
L214	13.00'	S 20°14'58" W
L215	18.00'	S 20°14'58" W
L216	18.00'	S 20°14'58" W
L217	18.00'	S 20°14'58" W
L218	11.64'	S 20°14'58" W
L219	11.80'	S 4°16'00" E
L220	20.00'	S 4°16'00" E
L221	18.00'	S 4°16'00" E
L222	11.81'	S 4°16'00" E
L223	17.88'	S 4°16'00" E
L224	24.00'	S 4°16'00" E
L225	24.00'	S 4°16'00" E
L226	16.00'	S 4°16'00" E
L227	16.00'	S 4°16'00" E
L228	17.72'	S 4°16'00" E
L229	5.27'	S 34°47'56" W
L230	1.63'	N 53°50'59" W
L231	14.71'	N 5°42'44" W
L232	16.01'	N 5°42'44" W
L233	16.01'	N 5°42'44" W
L234	24.01'	N 5°42'44" W
L235	16.65'	N 5°42'44" W
L241	36.00'	S 4°16'00" E
L242	18.00'	S 4°16'00" E

BUILD AREA TABLE		BUILD AREA TABLE	
LOT #	AREA IN ACRES	LOT #	AREA IN ACRES
57	0.068	99	0.022
58	0.028	100	0.024
59	0.028	101	0.020
60	0.057	102	0.040
61	0.038	103	0.024
62	0.073	104	0.024
63	0.048	105	0.024
64	0.032	106	0.046
65	0.023	107	0.027
66	0.043	108	0.033
67	0.055	109	0.039
68	0.031	110	0.039
69	0.043	111	0.026
70	0.033	112	0.026
71	0.038	113	0.038
72	0.020	114	0.024
73	0.019	115	0.027
74	0.039		

BOUNDARY CURVE TABLE				
CURVE	LENGTH	RADIUS	LONG CHORD	LENGTH
C65	36.13'	23.00'	S 1°01'52" E	32.53'
C66	101.94'	343.00'	S 21°30'10" E	101.57'
C67	75.14'	218.00'	N 10°22'29" E	74.77'
C68	91.89'	58.50'	N 65°14'58" E	82.73'
C69	175.76'	283.00'	N 2°28'52" E	172.95'
C70	80.26'	118.00'	S 15°18'44" W	78.73'
C71	32.45'	23.00'	N 5°36'59" W	29.82'
C72	36.13'	23.00'	S 88°58'09" W	32.53'
C73	50.07'	283.00'	N 46°01'51" W	50.00'

CURVE TABLE				
CURVE	LENGTH	RADIUS	LONG CHORD	LENGTH
C210	17.63'	143.00'	N 35°43'55" W	17.62'
C211	17.63'	143.00'	N 28°40'00" W	17.62'
C212	17.63'	143.00'	N 21°36'08" W	17.62'
C213	55.26'	107.00'	N 22°10'33" W	54.65'
C214	20.15'	143.00'	N 14°01'59" W	20.14'
C215	6.53'	143.00'	N 8°41'18" W	6.53'
C216	25.80'	150.00'	N 12°18'30" W	25.77'
C217	22.70'	132.00'	S 12°18'30" E	22.68'
C219	10.50'	93.00'	N 85°04'34" W	10.50'
C220	27.04'	23.00'	N 26°17'55" E	25.51'
C221	30.15'	102.00'	N 68°26'45" E	30.04'
C248	24.06'	217.00'	N 17°05'47" E	24.05'
C249	25.24'	217.00'	N 10°35'13" E	25.23'
C250	16.39'	217.00'	N 5°05'25" E	16.39'
C251	32.21'	217.00'	N 1°19'32" W	32.18'
C252	22.01'	217.00'	N 8°29'03" W	22.00'
C253	20.14'	217.00'	N 14°02'58" W	20.14'
C254	38.73'	217.00'	N 21°49'18" W	38.68'
C255	25.84'	217.00'	N 30°20'44" W	25.82'
C256	33.48'	217.00'	N 38°10'35" W	33.45'
C257	12.18'	283.00'	N 14°04'42" W	12.18'
C258	18.13'	283.00'	N 11°00'37" W	18.13'
C259	18.03'	283.00'	N 7°21'00" W	18.03'
C260	36.06'	283.00'	N 1°52'31" W	36.03'
C261	20.21'	283.00'	N 3°49'12" E	20.20'
C262	20.47'	283.00'	N 7°56'14" E	20.46'
C263	16.64'	283.00'	N 11°41'38" E	16.64'
C264	10.26'	283.00'	N 14°25'03" E	10.26'
C265	23.79'	283.00'	N 17°51'53" E	23.79'
C266	36.13'	23.00'	N 65°14'58" E	32.53'
C267	18.40'	182.00'	N 17°21'14" E	18.39'
C268	35.21'	182.00'	N 8°54'59" E	35.15'
C269	16.07'	182.00'	N 0°50'43" E	16.06'
C270	8.20'	182.00'	N 2°58'31" W	8.20'
C271	16.02'	218.00'	N 1°36'19" W	16.02'
C272	6.28'	82.00'	S 2°04'20" E	6.28'
C273	16.28'	82.00'	S 5°48'32" W	16.25'
C274	33.35'	82.00'	S 23°08'50" W	33.12'
C275	31.89'	82.00'	S 80°28'29" W	28.62'
C276	43.06'	82.00'	N 38°48'24" W	42.57'
C277	16.50'	82.00'	N 17°59'59" W	16.47'
C278	9.34'	82.00'	N 8°58'26" W	9.33'
C279	7.36'	343.00'	S 61°19" E	7.36'
C280	20.06'	343.00'	S 8°37'04" E	20.06'
C281	16.13'	343.00'	S 11°38'27" E	16.13'
C282	130.23'	307.00'	S 17°51'53" E	129.26'
C283	99.14'	118.00'	N 29°46'51" W	96.25'
C284	31.66'	232.00'	S 49°56'25" E	31.63'
C287	22.33'	18.00'	S 52°46'24" E	20.92'



LEGEND	
	BOUNDARY LINE
	LOT LINE
	SECTION LINE
	QUARTER SECTION LINE
	COUNTY LINE
	ADJOINER DEED LINES
	AREA TIE LINES
	CALCULATED SECTION CORNER AS NOTED
	SECTION CORNER AS NOTED
	BUILDABLE AREA
	EASEMENT
BA	BUILDABLE AREA
AC	ACRES

SUMMIT AT POWDER MOUNTAIN PHASE I
AREA 4 BOUNDARY, LOTS 57-62, 87-116 AND PARCEL J

LOCATED IN THE NORTHEAST QUARTER OF SECTION 12, T 7N, R 1E, SLBM, AND SECTION 7, THE SOUTH HALF OF SECTIONS 5 & 6, AND THE NORTH HALF OF SECTION 8, T 7N, R 2E, SLBM.

Sheet 10 of 10

NV5 **NOLTE VERTICALFIVE**
5217 SOUTH STATE STREET, SUITE 300 MURKIN, UT 84107
 801.743.1300 TEL. 801.743.0300 FAX WWW.NOLTE.COM

RECORDED #			
STATE OF UTAH, COUNTY OF WEBER, RECORDED AND FILED AT THE REQUEST OF:	ENTRY NO.:	DATE:	TIME:
		BOOK:	PAGE:
FEE \$		WEBER COUNTY RECORDER	