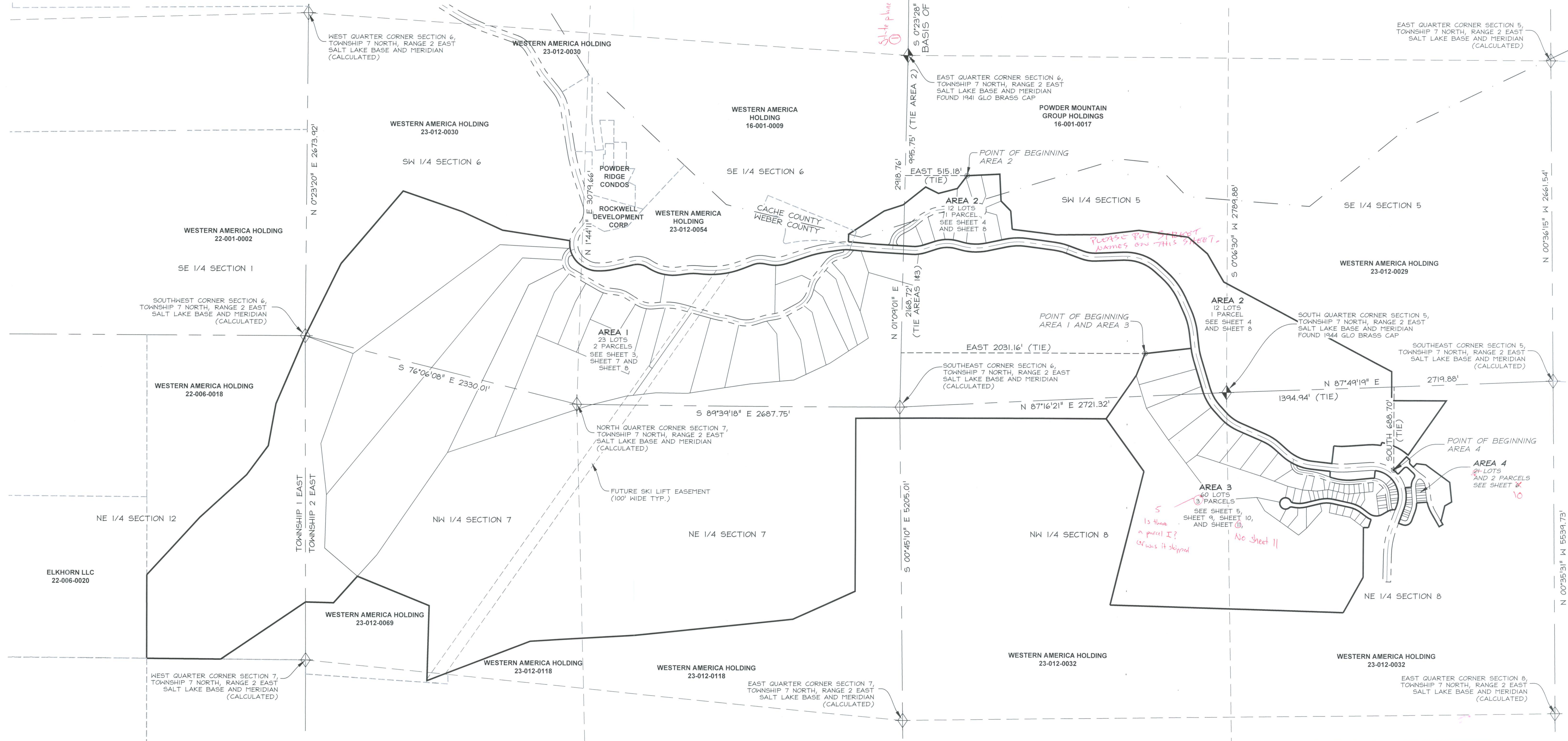


# SUMMIT AT POWDER MOUNTAIN PHASE I

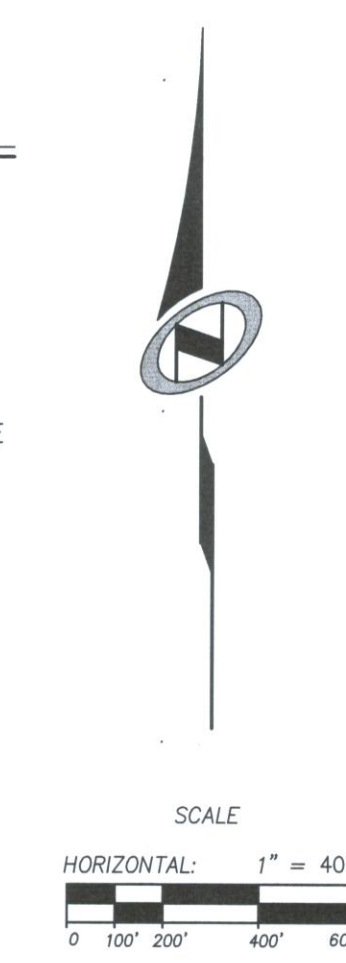
LOCATED IN THE NORTHEAST QUARTER OF SECTION 12, T 7N, R 1E, SLBM, AND SECTION 7, THE SOUTH HALF OF SECTIONS 5 & 6, AND THE NORTH HALF OF SECTION 8, T 7N, R 2E, SLBM.



## LEGEND

- BOUNDARY LINE
- LOT LINE
- SECTION LINE
- QUARTER SECTION LINE
- COUNTY LINE
- ADJOINER DEED LINES
- EASEMENT LINE
- AREA TIE LINES

- CALCULATED SECTION CORNER AS NOTED
- SECTION CORNER AS NOTED



## SUMMIT AT POWDER MOUNTAIN PHASE I

### SECTION BREAKDOWN, BASIS OF BEARINGS AND BOUNDARY OVERVIEW

LOCATED IN THE NORTHEAST QUARTER OF SECTION 12, T 7N, R 1E, SLBM, AND SECTION 7, THE SOUTH HALF OF SECTIONS 5 & 6, AND THE NORTH HALF OF SECTION 8, T 7N, R 2E, SLBM.

Sheet **2** of 10

**N|V|5** **NOLTE VERTICALFIVE**  
 5217 SOUTH STATE STREET, SUITE 300 MURRAY, UT 84107  
 801.743.1300 TEL. 801.743.0300 FAX WWW.NOLTE.COM

STATE OF UTAH, COUNTY OF WEBER, RECORDED AND FILED AT THE REQUEST OF: \_\_\_\_\_ ENTRY NO: \_\_\_\_\_

DATE: \_\_\_\_\_ TIME: \_\_\_\_\_ BOOK: \_\_\_\_\_ PAGE: \_\_\_\_\_

FEE \$ \_\_\_\_\_ WEBER COUNTY RECORDER