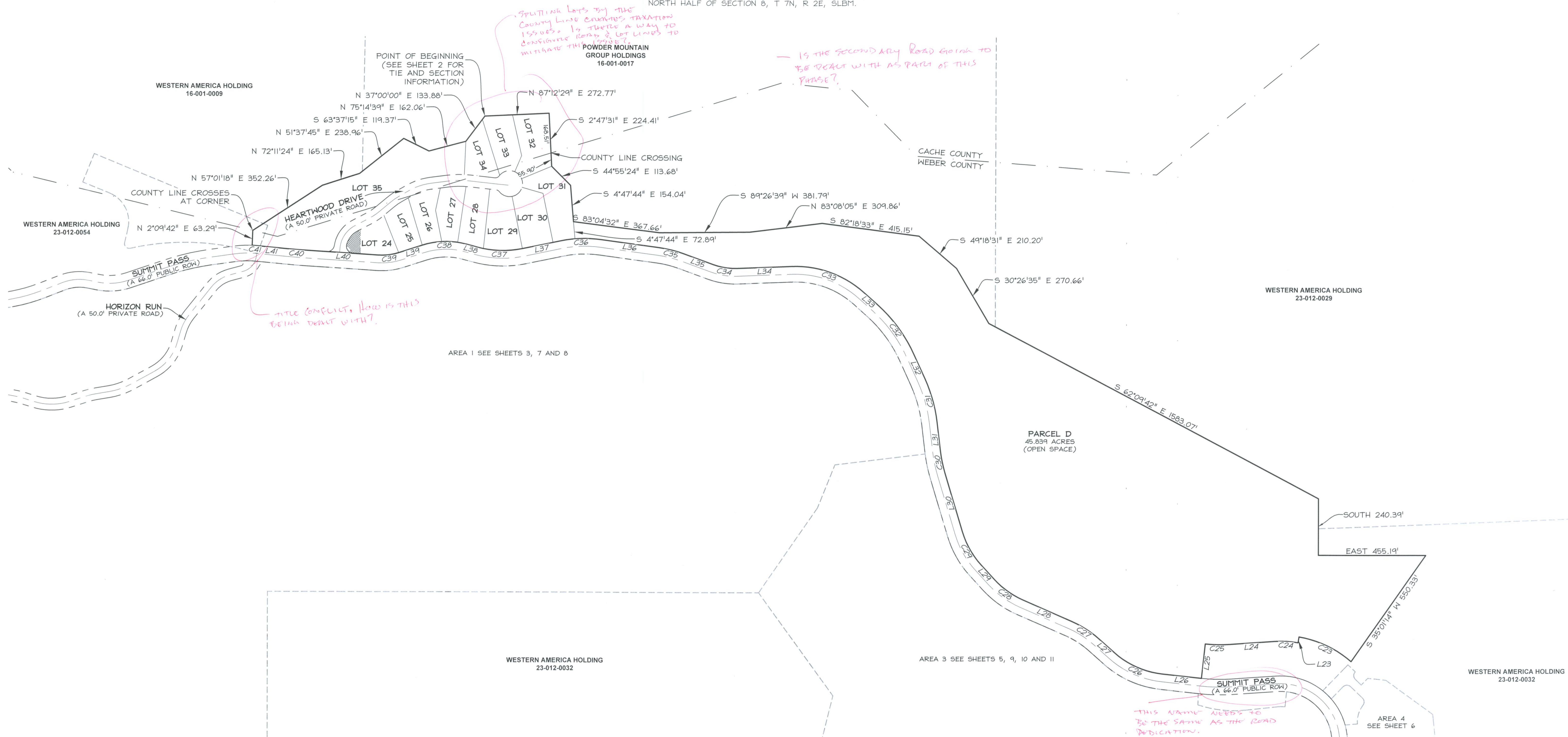


SUMMIT AT POWDER MOUNTAIN PHASE I

LOCATED IN THE NORTHEAST QUARTER OF SECTION 12, T 7N, R 1E, SLBM, AND SECTION 7, THE SOUTH HALF OF SECTIONS 5 & 6, AND THE NORTH HALF OF SECTION 8, T 7N, R 2E, SLBM.

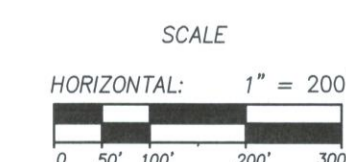


CURVE TABLE				
CURVE	LENGTH	RADIUS	LONG CHORD	LENGTH
C23	247.36'	455.00'	N 64°45'19" W	244.33'
C24	101.19'	430.00'	N 87°04'17" W	100.96'
C25	100.23'	570.00'	N 88°46'32" W	100.10'
C26	225.81'	367.00'	N 66°06'41" W	222.27'
C27	135.97'	433.00'	N 57°28'49" W	135.41'
C28	154.36'	367.00'	N 54°25'37" W	153.22'
C29	164.65'	367.00'	N 29°31'31" W	163.28'
C30	94.21'	537.42'	N 11°39'00" W	94.09'
C31	195.95'	633.00'	N 15°29'46" W	195.17'
C32	260.30'	633.00'	N 36°08'41" W	258.47'
C33	334.37'	433.00'	N 70°02'50" W	326.12'
C34	103.53'	267.00'	N 81°03'41" W	102.88'
C35	116.26'	533.00'	N 76°12'08" W	116.03'
C36	178.45'	533.00'	S 87°57'27" W	177.61'
C37	194.19'	417.00'	N 88°17'33" W	192.44'
C38	190.65'	333.00'	S 88°38'49" W	188.06'
C39	87.68'	234.82'	S 82°56'30" W	87.17'
C40	98.91'	2990.76'	N 85°24'51" W	98.90'
C41	27.02'	459.15'	N 86°09'09" W	27.01'

LINE TABLE		
LINE	LENGTH	DIRECTION
L23	25.00'	S 9°40'13" W
L24	193.22'	S 86°11'14" W
L25	147.00'	S 6°15'42" W
L26	166.47'	N 83°44'18" W
L27	89.38'	N 48°29'04" W
L28	225.95'	N 66°28'34" W
L29	79.01'	N 42°22'41" W
L30	261.55'	N 16°40'20" W
L31	118.34'	N 6°37'40" W
L32	113.52'	N 24°21'51" W
L33	81.02'	N 47°55'31" W
L34	231.14'	S 87°49'50" W
L35	128.40'	N 69°57'12" W
L36	241.01'	N 82°27'04" W
L37	163.17'	N 78°21'59" E
L38	46.14'	N 74°57'04" W
L39	103.92'	S 72°14'41" W
L40	297.63'	N 86°21'42" W
L41	114.11'	N 84°28'01" W

LEGEND

- BOUNDARY LINE
- LOT LINE
- SECTION LINE
- QUARTER SECTION LINE
- COUNTY LINE
- ADJOINER DEED LINES
- AREA TIE LINES
- CALCULATED SECTION CORNER AS NOTED
- SECTION CORNER AS NOTED
- BUILDABLE AREA
- EASEMENT



SUMMIT AT POWDER MOUNTAIN PHASE I

AREA 2 BOUNDARY & PARCEL D

LOCATED IN THE NORTHEAST QUARTER OF SECTION 12, T 7N, R 1E, SLBM, AND SECTION 7, THE SOUTH HALF OF SECTIONS 5 & 6, AND THE NORTH HALF OF SECTION 8, T 7N, R 2E, SLBM.

Sheet 4 of 10

N|V|5 **NOLTE VERTICALFIVE**
 5217 SOUTH STATE STREET, SUITE 300 MURRAY, UT 84107
 801.743.1300 TEL. 801.743.0300 FAX WWW.NOLTE.COM

RECORDED # _____
 STATE OF UTAH, COUNTY OF WEBER, RECORDED AND FILED AT THE
 REQUEST OF: _____ ENTRY NO: _____
 DATE: _____ TIME: _____ BOOK: _____ PAGE: _____
 FEE \$ _____ WEBER COUNTY RECORDER

This curve does not fully describe, close

XREFS: