

SUMMIT AT POWDER MOUNTAIN PHASE I

LOCATED IN THE NORTHEAST QUARTER OF SECTION 12, T 7N, R 1E, SLBM, AND SECTION 7, THE SOUTH HALF OF SECTIONS 5 & 6, AND THE NORTH HALF OF SECTION 8, T 7N, R 2E, SLBM.

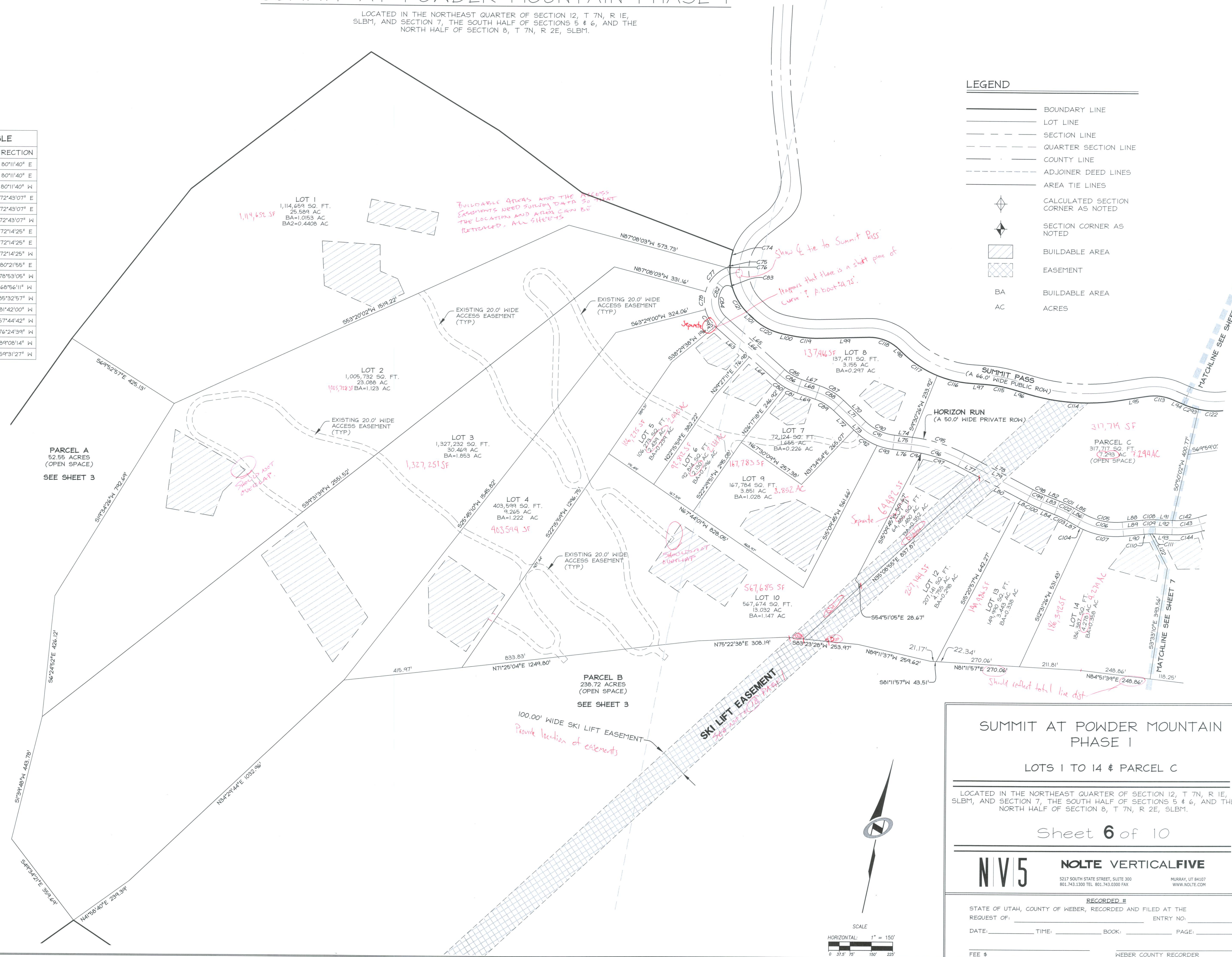
LINE	LENGTH	DIRECTION
L63	155.25'	N 60°32'49" W
L64	121.35'	N 60°32'49" W
L65	276.60'	S 60°32'49" E
L66	276.60'	S 60°32'49" E
L67	67.47'	S 83°22'38" E
L68	67.47'	S 83°22'38" E
L69	67.47'	N 83°22'38" W
L70	107.81'	S 58°25'06" E
L71	107.81'	S 58°25'06" E
L72	98.53'	N 58°25'06" W
L73	9.28'	N 58°25'06" W
L74	63.25'	N 84°20'22" E
L75	63.25'	N 84°20'22" E
L76	63.25'	S 84°20'22" W
L77	85.26'	N 74°39'03" W
L78	271.59'	S 74°39'03" E
L79	271.59'	S 74°39'03" E
L80	165.94'	N 74°39'03" W
L81	20.39'	N 74°39'03" W

LINE	LENGTH	DIRECTION
L82	55.85'	S 80°11'40" E
L83	55.85'	S 80°11'40" E
L84	55.85'	N 80°11'40" W
L85	42.25'	S 72°43'07" E
L86	42.25'	S 72°43'07" E
L87	42.25'	N 72°43'07" W
L88	72.15'	N 72°14'25" E
L89	72.15'	N 72°14'25" E
L90	72.15'	S 72°14'25" W
L91	58.94'	N 80°21'55" E
L94	41.36'	N 78°53'05" W
L95	94.64'	S 68°56'11" W
L96	56.26'	N 85°32'57" W
L97	53.97'	S 81°42'00" W
L98	14.03'	N 57°44'42" W
L99	166.99'	S 76°24'39" W
L100	27.32'	S 89°08'14" W
L101	20.07'	N 59°31'27" W

CURVE	LENGTH	RADIUS	LONG CHORD	LENGTH
C74	45.95'	213.00'	S 0°34'06" W	45.86'
C75	21.20'	20.00'	N 24°45'19" E	20.22'
C76	0.26'	20.00'	N 55°29'54" E	0.26'
C77	115.65'	125.00'	S 29°22'12" W	111.57'
C78	64.10'	125.00'	S 11°49'31" E	63.40'
C79	69.49'	125.00'	S 42°26'34" E	68.60'
C80	43.66'	225.00'	S 66°06'19" E	43.59'
C81	46.00'	225.00'	S 77°31'14" E	45.92'
C82	238.95'	100.00'	S 75°42'24" W	186.02'
C83	43.21'	20.00'	S 87°20'05" W	35.28'
C84	112.55'	75.00'	S 17°33'18" E	102.28'
C85	69.73'	175.00'	S 71°57'44" E	69.27'
C86	79.69'	200.00'	S 71°57'44" E	79.17'
C87	98.01'	225.00'	N 70°53'52" W	97.24'
C88	87.12'	200.00'	N 70°53'52" W	86.44'
C89	76.23'	175.00'	N 70°53'52" W	75.63'
C90	113.75'	175.00'	S 77°02'22" E	111.76'
C91	130.00'	200.00'	S 77°02'22" E	127.72'
C92	89.53'	225.00'	S 69°49'03" E	88.94'
C93	56.72'	225.00'	S 88°26'19" E	56.57'
C94	37.87'	475.00'	S 86°37'24" W	37.86'
C95	192.51'	525.00'	N 85°09'21" W	191.44'
C96	183.35'	500.00'	N 85°09'21" W	182.32'
C97	136.31'	475.00'	N 82°52'18" W	135.84'
C98	45.96'	475.00'	S 77°25'21" E	45.94'
C99	48.38'	500.00'	S 77°25'21" E	48.36'
C100	50.80'	525.00'	S 77°25'21" E	50.78'
C101	55.45'	425.00'	N 76°27'23" W	55.41'
C102	52.19'	400.00'	N 76°27'23" W	52.15'
C103	48.93'	375.00'	N 76°27'23" W	48.89'
C104	22.83'	275.00'	S 75°05'50" E	22.83'
C105	137.61'	225.00'	N 89°45'39" E	135.47'
C106	152.90'	250.00'	N 89°45'39" E	150.52'
C107	145.35'	275.00'	N 87°22'55" E	143.67'
C108	46.09'	325.00'	S 76°18'10" W	46.05'
C109	42.54'	300.00'	S 76°18'10" W	42.51'
C110	21.01'	275.00'	S 74°25'42" W	21.00'
C111	17.99'	275.00'	S 78°29'28" W	17.99'
C113	93.79'	167.00'	S 85°01'33" W	92.56'
C114	326.41'	733.00'	N 81°41'37" E	323.72'
C115	93.18'	418.71'	S 88°04'31" W	92.99'
C116	122.41'	383.00'	S 89°08'39" E	121.89'
C117	148.69'	383.00'	S 68°52'00" E	147.76'
C118	117.62'	147.00'	N 80°40'01" W	114.51'
C119	107.33'	483.21'	N 82°46'27" E	107.11'
C120	118.05'	215.83'	S 75°11'37" E	116.58'
C121	106.90'	213.00'	S 45°08'45" E	105.79'

LEGEND

- BOUNDARY LINE
- LOT LINE
- SECTION LINE
- QUARTER SECTION LINE
- COUNTY LINE
- ADJOINER DEED LINES
- AREA TIE LINES
- CALCULATED SECTION CORNER AS NOTED
- SECTION CORNER AS NOTED
- BUILDABLE AREA
- EASEMENT
- BA BUILDABLE AREA
- AC ACRES



SUMMIT AT POWDER MOUNTAIN PHASE I

LOTS 1 TO 14 & PARCEL C

LOCATED IN THE NORTHEAST QUARTER OF SECTION 12, T 7N, R 1E, SLBM, AND SECTION 7, THE SOUTH HALF OF SECTIONS 5 & 6, AND THE NORTH HALF OF SECTION 8, T 7N, R 2E, SLBM.

Sheet **6** of 10

NV5 **NOLTE VERTICAL FIVE**

8217 SOUTH STATE STREET, SUITE 300
801.743.1300 TEL. 801.743.0300 FAX
MURRAY, UT 84107
WWW.NOLTE.COM

RECORDED # _____

STATE OF UTAH, COUNTY OF WEBER, RECORDED AND FILED AT THE REQUEST OF: _____ ENTRY NO: _____

DATE: _____ TIME: _____ BOOK: _____ PAGE: _____

FEE \$ _____ WEBER COUNTY RECORDER