

SUMMIT AT POWDER MOUNTAIN PHASE I

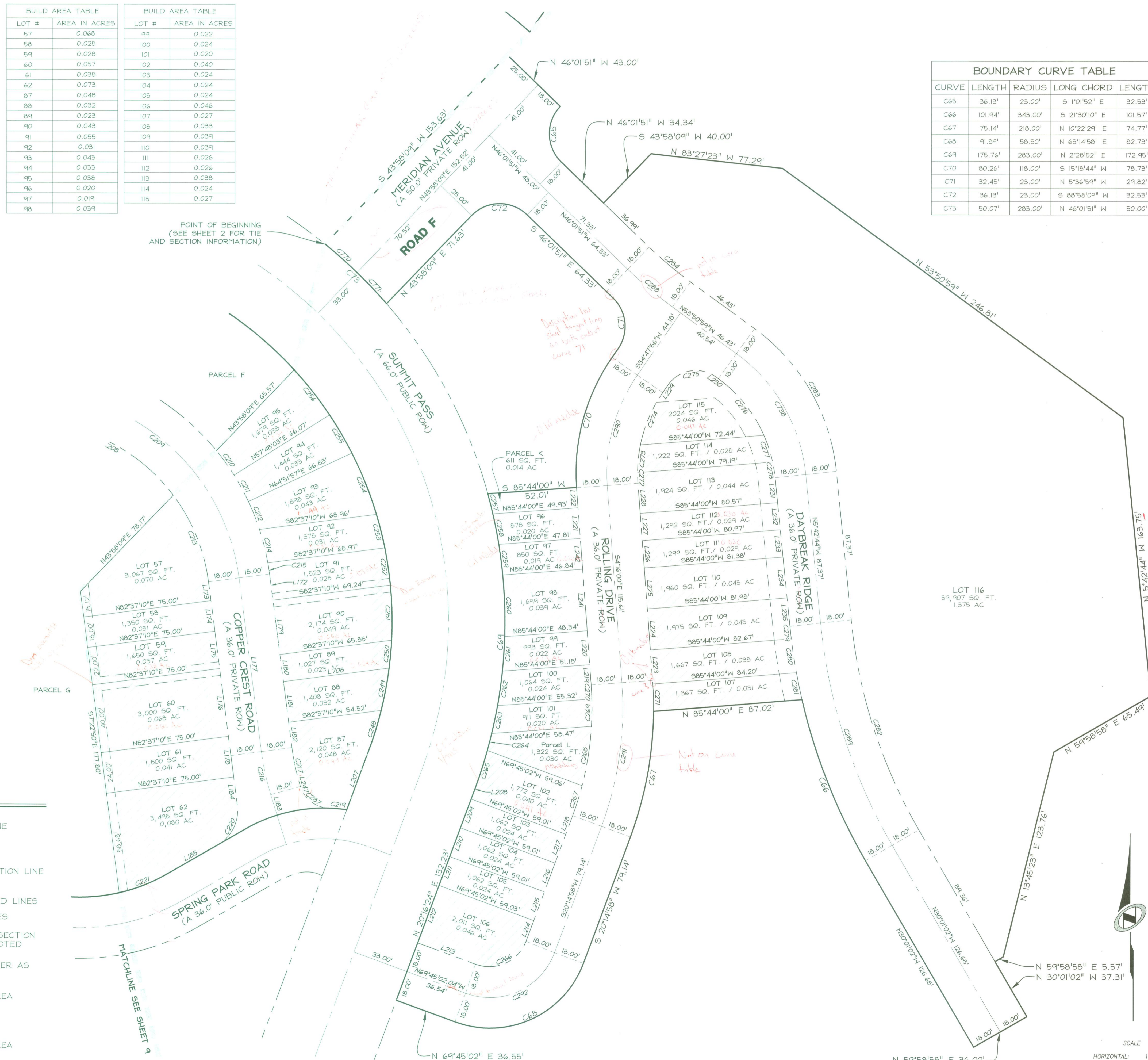
LOCATED IN THE NORTHEAST QUARTER OF SECTION 12, T 7N, R 1E, SLBM, AND SECTION 7, THE SOUTH HALF OF SECTIONS 5 & 6, AND THE NORTH HALF OF SECTION 8, T 7N, R 2E, SLBM.

LINE	LENGTH	DIRECTION
L172	15.48'	S 7°22'50" E
L173	11.11'	S 7°22'50" E
L174	18.00'	S 7°22'50" E
L175	22.00'	S 7°22'50" E
L176	40.00'	S 7°22'50" E
L177	102.39'	N 7°22'50" W
L178	24.00'	S 7°22'50" E
L179	32.00'	S 7°22'50" E
L180	16.00'	S 7°22'50" E
L181	24.00'	S 7°22'50" E
L182	14.92'	S 7°22'50" E
L183	12.54'	N 17°14'09" W
L184	16.86'	S 7°22'50" E
L185	34.38'	S 59°58'41" W
L207	37.40'	N 20°16'24" E
L208	6.23'	S 20°16'24" W
L209	18.00'	S 20°16'24" W
L210	18.00'	S 20°16'24" W
L211	18.00'	S 20°16'24" W
L212	36.00'	S 20°16'24" W
L213	36.04'	N 69°45'02" W
L214	13.00'	S 20°14'58" W
L215	18.00'	S 20°14'58" W
L216	18.00'	S 20°14'58" W
L217	18.00'	S 20°14'58" W
L218	11.64'	S 20°14'58" W
L219	11.80'	S 4°16'00" E
L220	20.00'	S 4°16'00" E
L221	18.00'	S 4°16'00" E
L222	11.81'	S 4°16'00" E
L223	17.88'	S 4°16'00" E
L224	24.00'	S 4°16'00" E
L225	24.00'	S 4°16'00" E
L226	16.00'	S 4°16'00" E
L227	16.00'	S 4°16'00" E
L228	17.72'	S 4°16'00" E
L229	5.27'	S 34°47'56" W
L230	1.63'	N 53°50'59" W
L231	14.71'	N 5°42'44" W
L232	16.01'	N 5°42'44" W
L233	16.01'	N 5°42'44" W
L234	24.01'	N 5°42'44" W
L235	16.65'	N 5°42'44" W
L241	36.00'	S 4°16'00" E
L242	18.00'	S 4°16'00" E

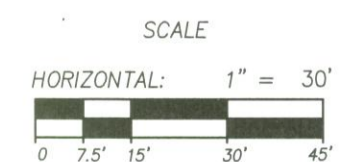
BUILD AREA TABLE		BUILD AREA TABLE	
LOT #	AREA IN ACRES	LOT #	AREA IN ACRES
57	0.068	99	0.022
58	0.028	100	0.024
59	0.028	101	0.020
60	0.057	102	0.040
61	0.038	103	0.024
62	0.073	104	0.024
87	0.048	105	0.024
88	0.032	106	0.046
89	0.023	107	0.027
90	0.043	108	0.033
91	0.055	109	0.039
92	0.031	110	0.039
93	0.043	111	0.026
94	0.033	112	0.026
95	0.038	113	0.038
96	0.020	114	0.024
97	0.019	115	0.027
98	0.039		

BOUNDARY CURVE TABLE				
CURVE	LENGTH	RADIUS	LONG CHORD	LENGTH
C65	36.13'	23.00'	S 1°01'52" E	32.53'
C66	101.94'	343.00'	S 21°30'10" E	101.57'
C67	75.14'	218.00'	N 10°22'29" E	74.77'
C68	91.89'	58.50'	N 65°14'58" E	82.73'
C69	175.76'	283.00'	N 2°28'52" E	172.95'
C70	80.26'	118.00'	S 15°18'44" W	78.73'
C71	32.45'	23.00'	N 5°36'59" W	29.82'
C72	36.13'	23.00'	S 88°58'09" W	32.53'
C73	50.07'	283.00'	N 46°01'51" W	50.00'

CURVE TABLE				
CURVE	LENGTH	RADIUS	LONG CHORD	LENGTH
C210	17.63'	143.00'	N 35°43'55" W	17.62'
C211	17.63'	143.00'	N 28°40'00" W	17.62'
C212	17.63'	143.00'	N 21°36'08" W	17.62'
C213	55.26'	107.00'	N 22°10'33" W	54.65'
C214	20.15'	143.00'	N 14°01'59" W	20.14'
C215	6.53'	143.00'	N 8°41'18" W	6.53'
C216	25.80'	150.00'	N 12°18'30" W	25.77'
C217	22.70'	132.00'	S 12°18'30" E	22.68'
C219	10.50'	93.00'	N 85°04'34" W	10.50'
C220	27.04'	23.00'	N 26°17'55" E	25.51'
C221	30.15'	102.00'	N 68°26'45" E	30.04'
C248	24.06'	217.00'	N 17°05'47" E	24.05'
C249	25.24'	217.00'	N 10°35'13" E	25.23'
C250	16.39'	217.00'	N 5°05'25" E	16.39'
C251	32.21'	217.00'	N 1°19'32" W	32.18'
C252	22.01'	217.00'	N 8°29'03" W	22.00'
C253	20.14'	217.00'	N 14°02'58" W	20.14'
C254	38.73'	217.00'	N 21°49'18" W	38.68'
C255	25.84'	217.00'	N 30°20'44" W	25.82'
C256	33.48'	217.00'	N 38°10'35" W	33.45'
C257	12.18'	283.00'	N 14°04'42" W	12.18'
C258	18.13'	283.00'	N 11°00'37" W	18.13'
C259	18.03'	283.00'	N 7°21'00" W	18.03'
C260	36.06'	283.00'	N 1°52'31" W	36.03'
C261	20.21'	283.00'	N 3°49'12" E	20.20'
C262	20.47'	283.00'	N 7°56'14" E	20.46'
C263	16.64'	283.00'	N 11°41'38" E	16.64'
C264	10.26'	283.00'	N 14°25'03" E	10.26'
C265	23.79'	283.00'	N 17°51'53" E	23.79'
C266	36.13'	23.00'	N 65°14'58" E	32.53'
C267	18.40'	182.00'	N 17°21'14" E	18.39'
C268	35.21'	182.00'	N 8°54'59" E	35.15'
C269	16.07'	182.00'	N 0°50'43" E	16.06'
C270	8.20'	182.00'	N 2°58'31" W	8.20'
C271	16.02'	218.00'	N 1°36'19" W	16.02'
C272	6.28'	82.00'	S 2°04'20" E	6.28'
C273	16.28'	82.00'	S 5°48'32" W	16.25'
C274	33.35'	82.00'	S 23°08'50" W	33.12'
C275	31.89'	20.00'	S 80°28'29" W	28.62'
C276	43.06'	82.00'	N 38°48'24" W	42.57'
C277	16.50'	82.00'	N 17°59'59" W	16.47'
C278	9.34'	82.00'	N 8°58'26" W	9.33'
C279	7.36'	343.00'	S 6°19'38" E	7.36'
C280	20.06'	343.00'	S 8°37'04" E	20.06'
C281	16.13'	343.00'	S 11°38'27" E	16.13'
C282	130.23'	307.00'	S 17°51'53" E	129.26'
C283	99.14'	118.00'	N 29°46'51" W	96.25'
C284	31.66'	232.00'	S 49°56'25" E	31.63'
C287	22.33'	18.00'	S 52°46'24" E	20.92'



LEGEND	
	BOUNDARY LINE
	LOT LINE
	SECTION LINE
	QUARTER SECTION LINE
	COUNTY LINE
	ADJOINER DEED LINES
	AREA TIE LINES
	CALCULATED SECTION CORNER AS NOTED
	SECTION CORNER AS NOTED
	BUILDABLE AREA
	EASEMENT
BA	BUILDABLE AREA
AC	ACRES



SUMMIT AT POWDER MOUNTAIN PHASE I
AREA 4 BOUNDARY, LOTS 57-62, 87-116 AND PARCEL J

LOCATED IN THE NORTHEAST QUARTER OF SECTION 12, T 7N, R 1E, SLBM, AND SECTION 7, THE SOUTH HALF OF SECTIONS 5 & 6, AND THE NORTH HALF OF SECTION 8, T 7N, R 2E, SLBM.

Sheet **10** of 10

NV5 **NOLTE VERTICALFIVE**
5217 SOUTH STATE STREET, SUITE 300 MURRAY, UT 84107
 801.743.1300 TEL 801.743.0300 FAX WWW.NV5.COM

RECORDED # _____
 STATE OF UTAH, COUNTY OF WEBER, RECORDED AND FILED AT THE REQUEST OF: _____ ENTRY NO. _____
 DATE: _____ TIME: _____ BOOK: _____ PAGE: _____
 FEE \$ _____ WEBER COUNTY RECORDER