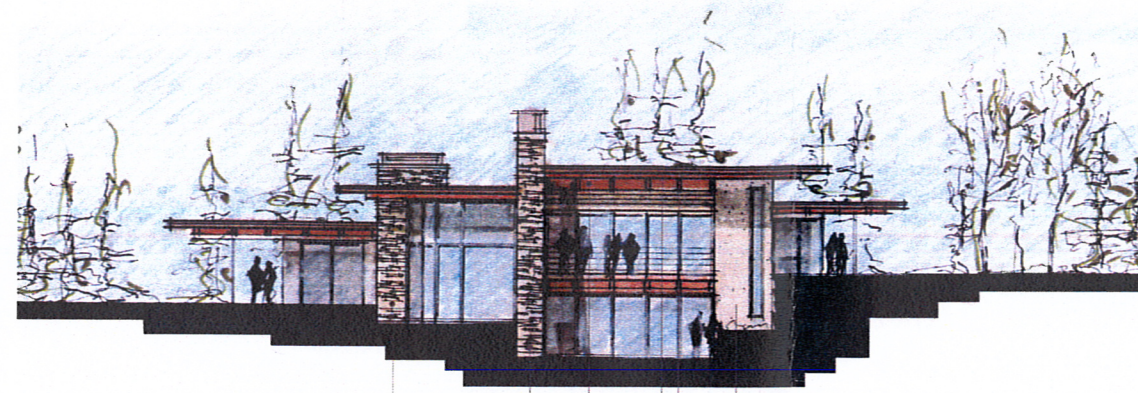
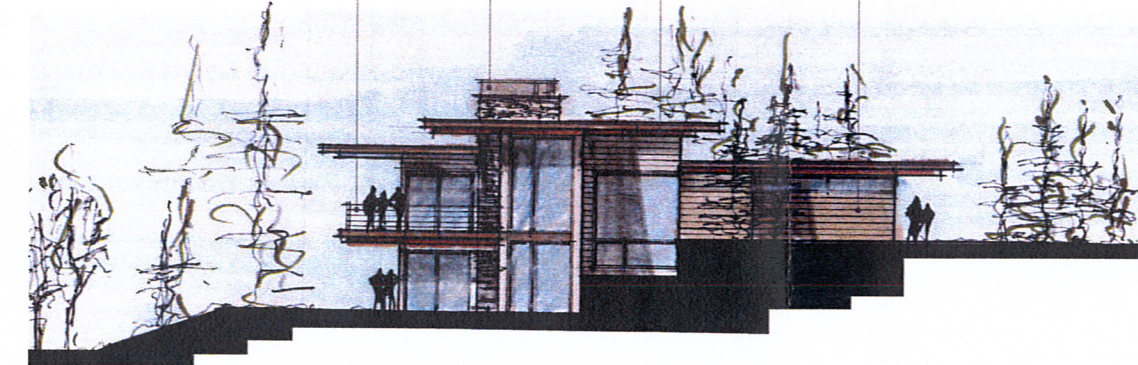


Exhibit F



STONE CHIMNEY
METAL FASCIA
METAL ARRESTOR
STAINLESS STEEL CABLE RAILING

BOARD FORMED CONCRETE
TIMBER BEAMS
EXPOSED STEEL BEAM
RECLAIMED WOOD SIDING



FORM AND MASSING

- Clustered, low-profile building volumes
- Step down at edges
- Create shadows
- Garage door off main traffic pattern

ROOFS

- Low and fragmented rooflines
- Maximum ridge length of 50 feet
- Non-reflective materials

MATERIALS

- Real stone (manufactured not allowed)
- Wood
- Concrete
- Glass (mirrored not allowed)
- Stucco (earth-tones & maximum of 30%)
- Metal (non-reflective)
- Connection to surrounding landscape
- Colors of earth-tone hues

RESIDENTIAL DESIGN



BERTOLDI ARCHITECTS
ARCHITECTURE • PLANNING • INTERIORS
7726 HARRISON BLVD., OGDEN, UTAH 84001 PH: 801.576.4300 FX: 801.476.6318

SUMMIT EDEN PHASE 1 PRUD SUBMITTAL

POWDER MOUNTAIN, WEBER COUNTY, UTAH

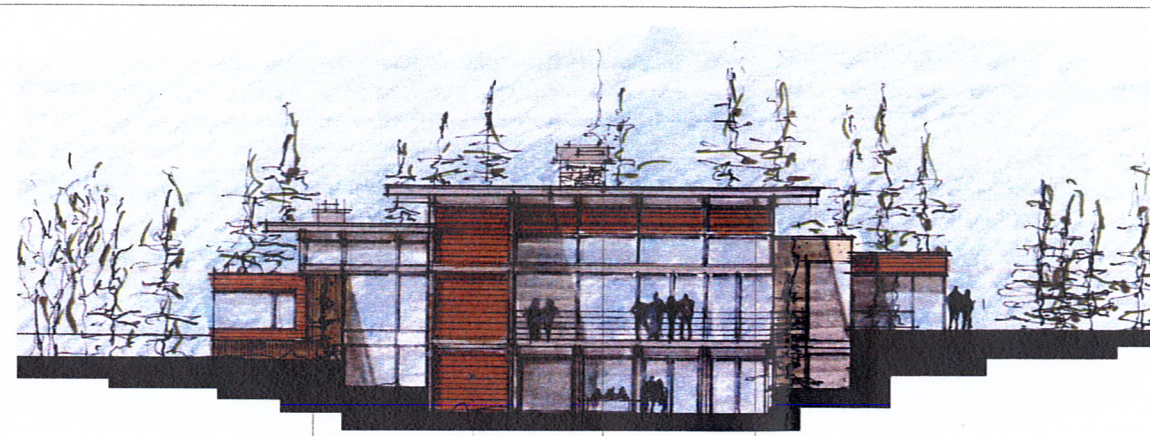


DATE:	JANUARY 25, 2013
PROJECT:	1301
DRAWN BY:	
REVIEW BY:	
VERSION:	PRUD
REVISIONS:	

SHEET TITLE:
DESIGN GUIDELINE
REFERENCE

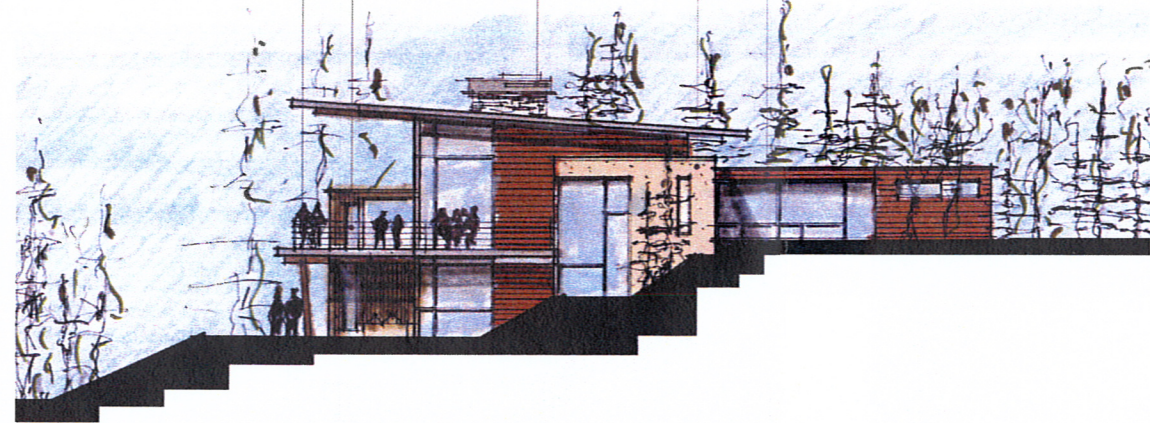
SHEET NUMBER:
A1.10

NOTE: THE DRAWINGS ARE CONCEPTUAL AND THEMATIC IN NATURE, AND THE BUILDING IMAGES ARE FOR REFERENCE ONLY. THEY ARE INTENDED TO ILLUSTRATE GENERAL DESIGN STYLE, MATERIALS, AND FORM. THEY ARE NOT FINAL BUILDING CONFIGURATIONS OR FOOTPRINTS. ALL BUILDINGS WITHIN PHASE 1 WILL FOLLOW APPROVED SUMMIT EDEN VIEWS AND DESIGN GUIDELINES.



METAL PANEL SIDING
WOOD SCREEN
STAINLESS STEEL RAILING
HEAVY TIMBER FRAMING

EXPOSED STEEL STRUCTURE
METAL FASCIA
STONE FIREPLACE & METAL ARRESTOR
RAMMED EARTH WALL
CEDAR SIDING



FORM AND MASSING

- Clustered, low-profile building volumes
- Step down at edges
- Create shadows
- Garage door off main traffic pattern

ROOFS

- Low and fragmented rooflines
- Maximum ridge length of 50 feet
- Non-reflective materials

MATERIALS

- Real stone (manufactured not allowed)
- Wood
- Concrete
- Glass (mirrored not allowed)
- Stucco (earth-tones & maximum of 30%)
- Metal (non-reflective)
- Connection to surrounding landscape
- Colors of earth-tone hues

RESIDENTIAL DESIGN

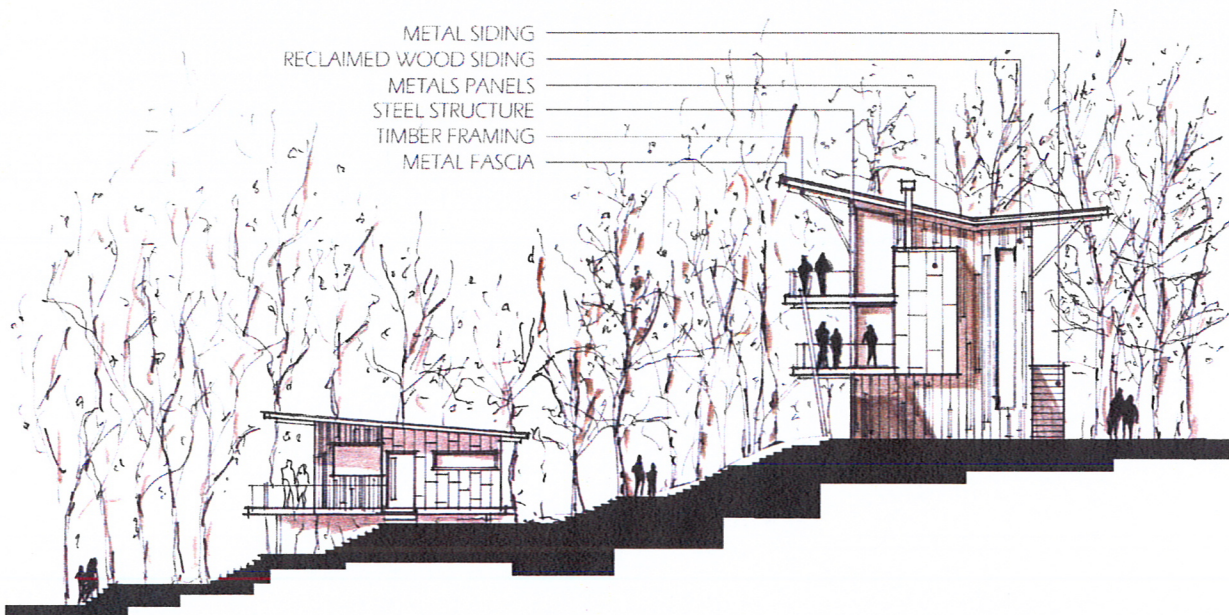
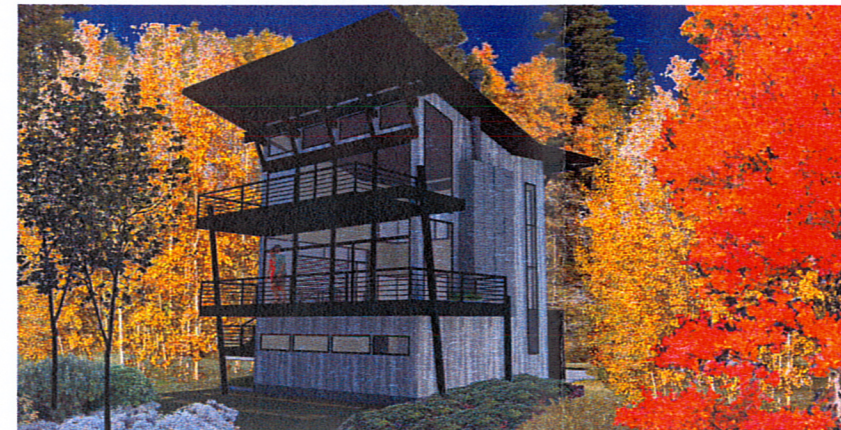
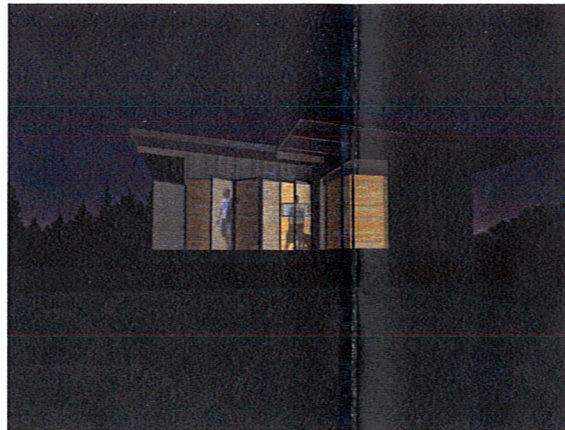
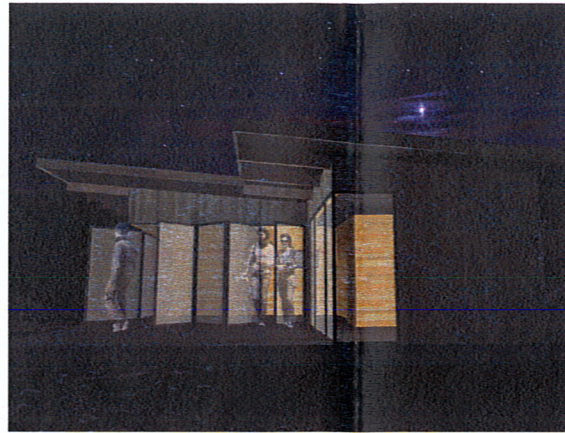


DATE:	JANUARY 25, 2013
PROJECT:	1301
DRAWN BY:	
REVIEW BY:	
VERSION:	PRUD
REVISIONS:	

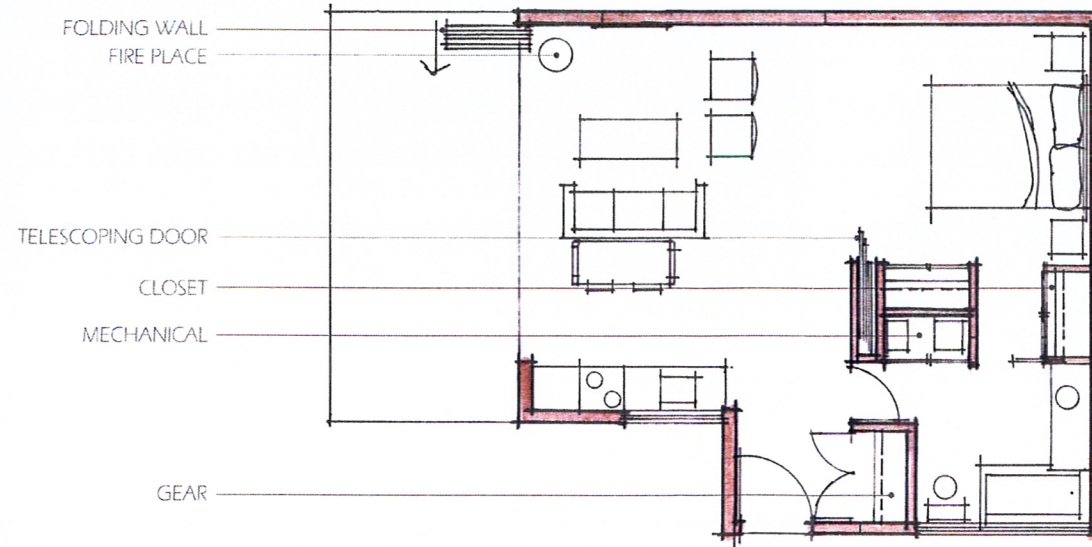
SHEET TITLE:
DESIGN GUIDELINE REFERENCE

SHEET NUMBER:
A1.11

NOTE: THE DRAWINGS ARE CONCEPTUAL AND THEMATIC IN NATURE, AND THE BUILDING IMAGES ARE FOR REFERENCE ONLY. THEY ARE INTENDED TO ILLUSTRATE GENERAL DESIGN STYLE, MATERIALS, AND FORMS. THEY ARE NOT FINAL BUILDING CONSTRUCTION OR FOOTPRINTS. ALL BUILDINGS WITHIN PHASE 1 WILL FOLLOW APPROVED SUMMIT EDEN'S DESIGN GUIDELINES.



- METAL SIDING
- RECLAIMED WOOD SIDING
- METALS PANELS
- STEEL STRUCTURE
- TIMBER FRAMING
- METAL FASCIA



- FOLDING WALL
- FIRE PLACE
- TELESCOPING DOOR
- CLOSET
- MECHANICAL
- GEAR

NEST DESIGN



BERTOLDI
ARCHITECTS
 ARCHITECTURE • PLANNING • INTERIORS
 220 HARRISON BLVD. COCHISE, UTAH 84001 TEL: 801.426.4300 FAX: 801.426.4335

SUMMIT EDEN
 PHASE 1 PRUD SUBMITTAL
 POWDER MOUNTAIN, WEBER COUNTY, UTAH

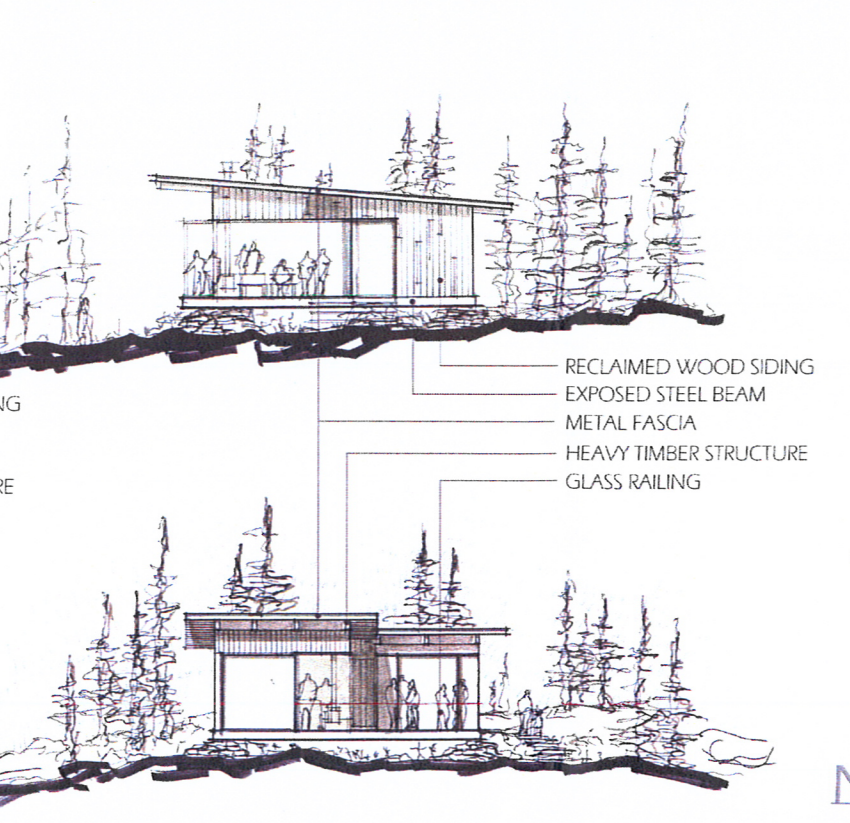
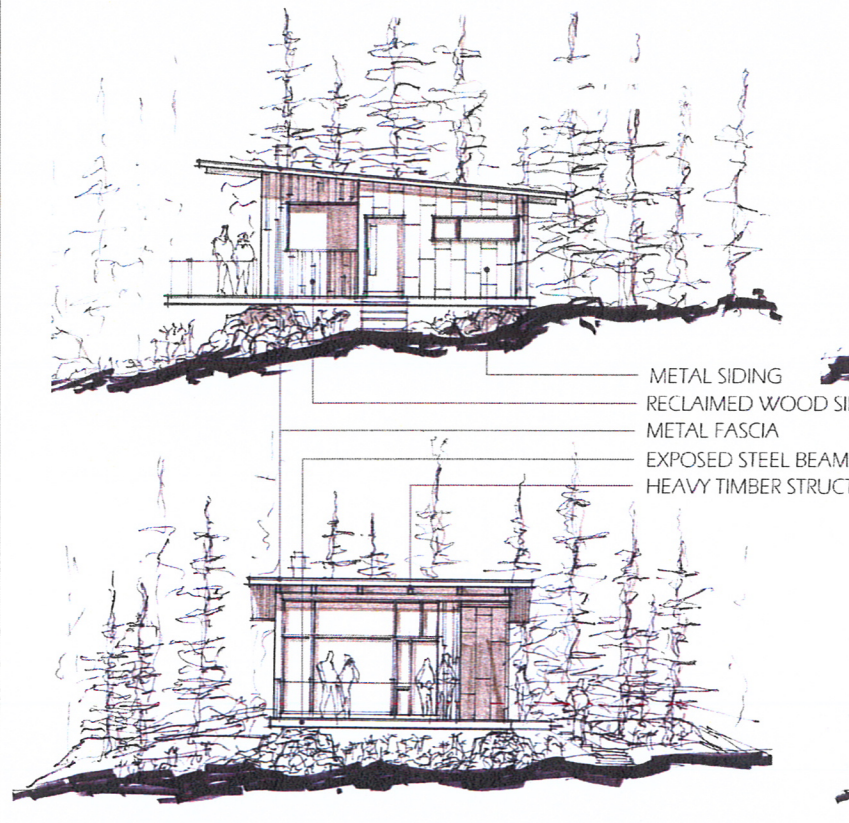


DATE:	JANUARY 25, 2013
PROJECT:	1301
DRAWN BY:	
REVIEW BY:	
VERSION:	PRUD
REVISIONS:	

SHEET TITLE:
 DESIGN GUIDELINE
 REFERENCE

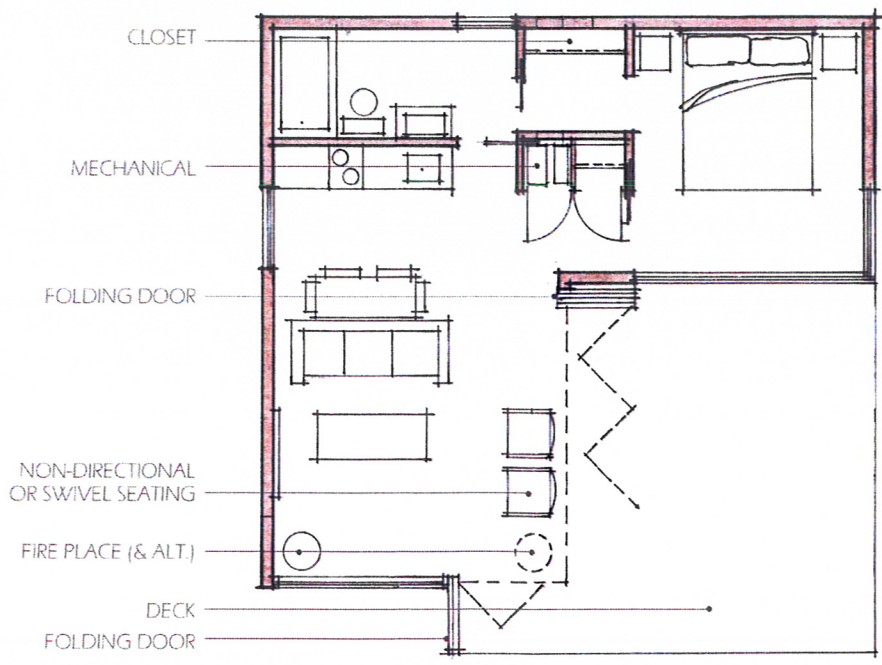
SHEET NUMBER:
A1.12

NOTE: THESE DRAWINGS ARE CONCEPTUAL AND THEMATIC IN NATURE. THEY ARE INTENDED TO ILLUSTRATE GENERAL DESIGN STYLE, MATERIALS AND FORM. THEY ARE NOT FINAL BUILDING CONFIGURATIONS OR FOOTPRINTS. ALL DISTANCES WITHIN THIS PLAN SHALL FOLLOW APPROVED SUMMIT EDEN LOTS AND DESIGN GUIDELINES.



- METAL SIDING
- RECLAIMED WOOD SIDING
- METAL FASCIA
- EXPOSED STEEL BEAM
- HEAVY TIMBER STRUCTURE

- RECLAIMED WOOD SIDING
- EXPOSED STEEL BEAM
- METAL FASCIA
- HEAVY TIMBER STRUCTURE
- GLASS RAILING



NEST DESIGN

NOTE: THESE DRAWINGS ARE CONCEPTUAL AND THEMATIC IN NATURE. THEY ARE INTENDED TO ILLUSTRATE DESIGNER'S DESIGN STYLE, MATERIALS AND COLORS. THEY ARE NOT FINAL BUILTS. ALL CONSTRUCTION SHALL COMPLY WITH ALL CITY, COUNTY, STATE AND FEDERAL REGULATIONS AND ALL APPLICABLE CODES AND REGULATIONS. ALL DIMENSIONS SHALL BE AS SHOWN UNLESS OTHERWISE NOTED. FOLLOW APPROVED SUBMITTALS AND DESIGN GUIDELINES.

SUMMIT EDEN
 PHASE 1 PRUD SUBMITTAL
 POWDER MOUNTAIN, WEBER COUNTY, UTAH

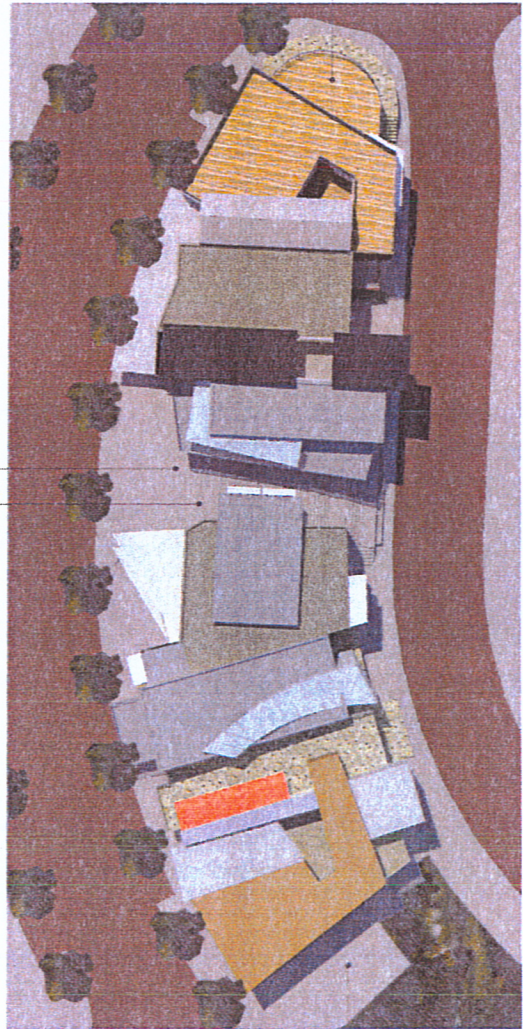
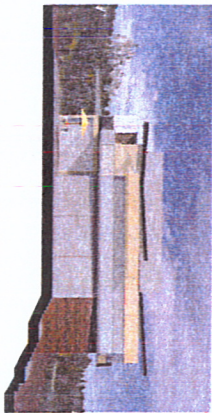


DATE:	JANUARY 25, 2013
PROJECT:	1301
DRAWN BY:	
REVIEW BY:	
VERSION:	PRUD
REVISIONS:	

SHEET TITLE:
 DESIGN GUIDELINE
 REFERENCE

SHEET NUMBER:
A1.13


SOUTH

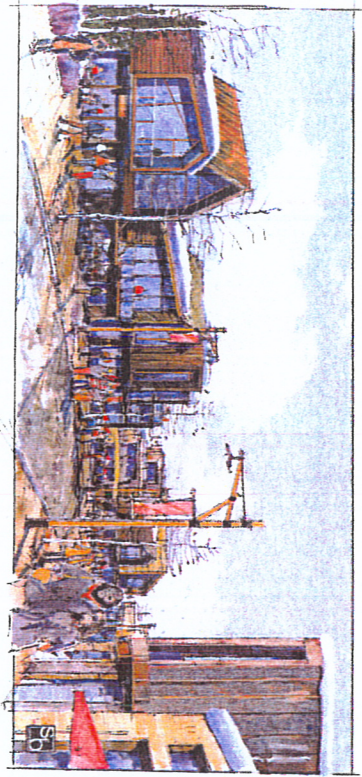


NORTH



VILLAGE CORE ROOF PLAN & SIDE ELEVATIONS

 <p>SUMMIT EDEN PHASE 1 PRUD SUBMITTAL</p> <p>POWDER MOUNTAIN, WEBER COUNTY, UTAH</p>	<p>BERTOLDI ARCHITECTS ARCHITECTURE • PLANNING • INTERIORS</p>
	<p>DATE: JANUARY 25, 2013</p>
	<p>PROJECT: 1281</p>
	<p>DESIGNED BY: [REDACTED]</p>
	<p>REVISIONS: [REDACTED]</p>
<p>SCALE: 1/8" = 1'-0"</p>	<p>A1.7</p>



UPPER STREETSCAPE



MID BLOCK PLAZA



LOWER STREETSCAPE

VILLAGE CORE VIGNETTES



DATE	JANUARY 26, 2010
PROJECT	PHASE 1 PRUD SUBMITTAL
CLIENT	PRUD
LOCATION	POWDER MOUNTAIN, UTAH
DESIGNER	BERTOLDI ARCHITECTS
REVISIONS	

A1.8

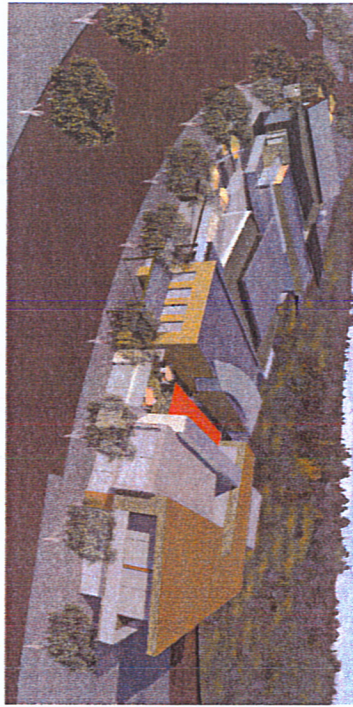


SUMMIT EDEN
PHASE 1 PRUD SUBMITTAL

POWDER MOUNTAIN, WEBER COUNTY, UTAH



ARCHITECTURE • PLANNING • INTERIORS



VIEW FROM NORTH EAST



VIEW FROM NORTH WEST



SITE SECTION AND ELEVATION

VILLAGE CORE SECTION
AND VIGNETTES



DATE	2/10/2012
PROJECT	PHASE 1 PRUD SUBMITTAL
DESIGNED BY	BBN
REVIEWED BY	
DRAWN BY	
CHECKED BY	
APPROVED BY	
REVISIONS	
NO. 1	
NO. 2	
NO. 3	
NO. 4	
NO. 5	
NO. 6	
NO. 7	
NO. 8	
NO. 9	
NO. 10	
NO. 11	
NO. 12	
NO. 13	
NO. 14	
NO. 15	
NO. 16	
NO. 17	
NO. 18	
NO. 19	
NO. 20	
NO. 21	
NO. 22	
NO. 23	
NO. 24	
NO. 25	
NO. 26	
NO. 27	
NO. 28	
NO. 29	
NO. 30	
NO. 31	
NO. 32	
NO. 33	
NO. 34	
NO. 35	
NO. 36	
NO. 37	
NO. 38	
NO. 39	
NO. 40	
NO. 41	
NO. 42	
NO. 43	
NO. 44	
NO. 45	
NO. 46	
NO. 47	
NO. 48	
NO. 49	
NO. 50	
NO. 51	
NO. 52	
NO. 53	
NO. 54	
NO. 55	
NO. 56	
NO. 57	
NO. 58	
NO. 59	
NO. 60	
NO. 61	
NO. 62	
NO. 63	
NO. 64	
NO. 65	
NO. 66	
NO. 67	
NO. 68	
NO. 69	
NO. 70	
NO. 71	
NO. 72	
NO. 73	
NO. 74	
NO. 75	
NO. 76	
NO. 77	
NO. 78	
NO. 79	
NO. 80	
NO. 81	
NO. 82	
NO. 83	
NO. 84	
NO. 85	
NO. 86	
NO. 87	
NO. 88	
NO. 89	
NO. 90	
NO. 91	
NO. 92	
NO. 93	
NO. 94	
NO. 95	
NO. 96	
NO. 97	
NO. 98	
NO. 99	
NO. 100	



SUMMIT EDEN
PHASE 1 PRUD SUBMITTAL
 POWDER MOUNTAIN, WEBER COUNTY, UTAH



A1.9