

Legend

- Monument to be set
Found Centerline Monument
Radial Line
Non-Radial Line
PUE Public Utility Easement
PU&DE Public Utility & Drainage Easement
Fence
Buildable Area
Set Hub & Tack
A will be set Nail in Curb
Extension of Property
Set 5/8" x 24" Long Rebar & Cap w/ Lathe

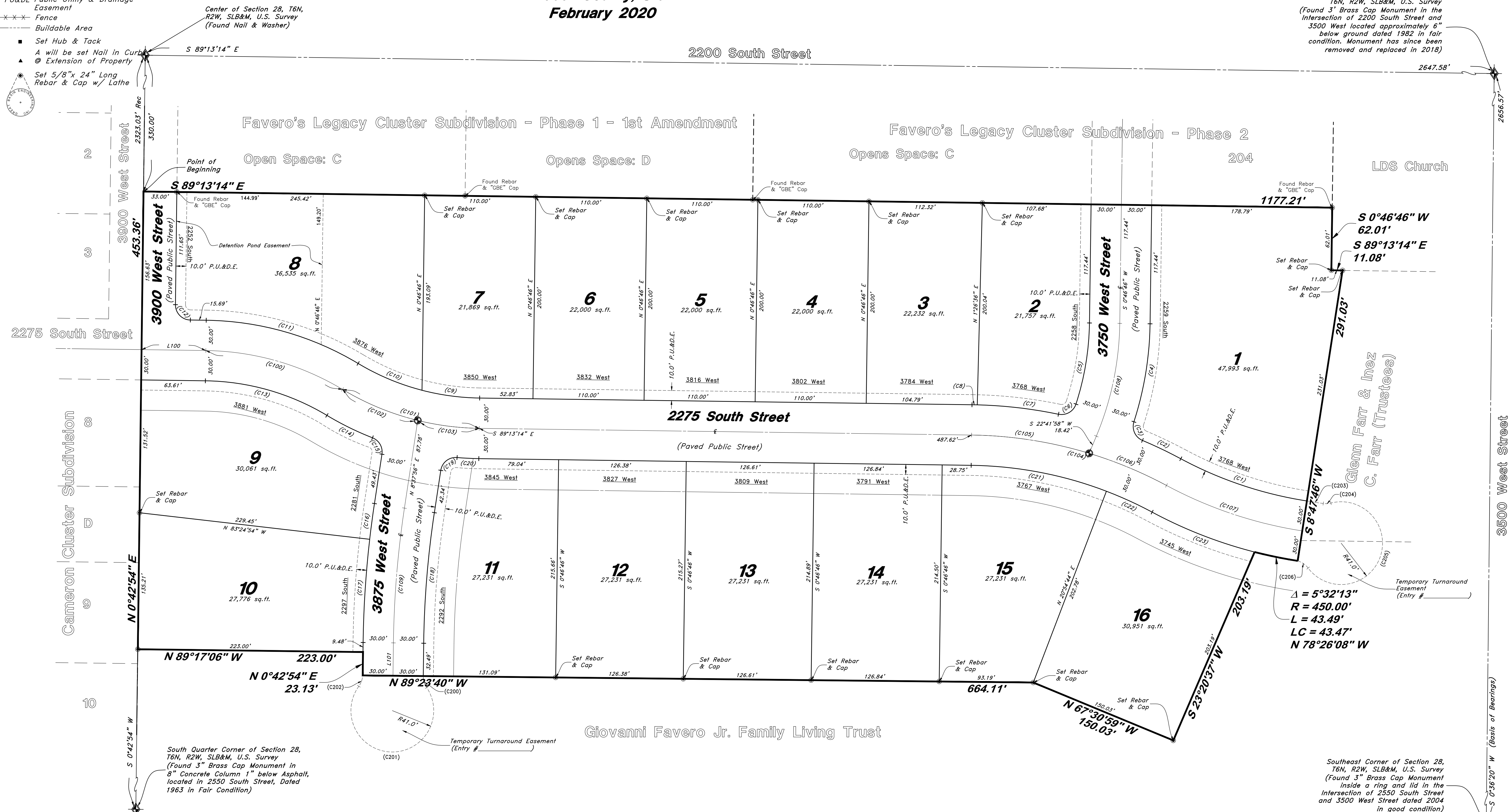
Summerset Farms - Phase 1
A Lot Averaging Subdivision

A part of the Southeast Quarter of Section 28, T6N, R2W, SLB&M, U.S. Survey
Weber County, Utah
February 2020

East Quarter Corner of Section 28, T6N, R2W, SLB&M, U.S. Survey
Found 3" Brass Cap Monument in the Intersection of 2200 South Street and 3500 West located approximately 6" below ground dated 1982 in fair condition. Monument has since been removed and replaced in 2018)

LOT AVERAGING TABLE

Table with 3 columns: Lot #, Sq.Ft., Frontage. Rows include individual lots 1-16, Phase 1 Average, Phase 2 Average, Phase 3 Average, and Overall Averages.



Delta = 5°32'13"
R = 450.00'
L = 43.49'
LC = 43.47'
N 78°26'08" W

PROPERTY LINE CURVE DATA table with columns: Curve #, Delta, Radius, Length, Chord Direction, Chord Length. Lists curves C(1) through C(12).

PROPERTY LINE CURVE DATA table with columns: Curve #, Delta, Radius, Length, Chord Direction, Chord Length. Lists curves C(13) through C(23).

PROPERTY LINE CURVE DATA table with columns: Curve #, Delta, Radius, Length, Chord Direction, Chord Length. Lists curves C(100) through C(109).

EASEMENT LINE CURVE DATA table with columns: Curve #, Delta, Radius, Length, Chord Direction, Chord Length. Lists curves C(200) through C(206).

LINE DATA table with columns: Line, Bearing, Length. Lists lines L100, L101, L102.

NOTE
1. 10' wide Public Utility Easement as indicated by dashed lines, except as otherwise shown.
2. For each zone in this subdivision, the average area and average width of lots within the zone equal or exceed the minimum area and minimum width allowed in the zone.

GREAT BASIN ENGINEERING logo and address: 5746 SOUTH 1475 EAST OGDEN, UTAH 84403

WEBER COUNTY RECORDER form with fields for ENTRY NO., FEE PAID, RECORDED, IN BOOK, OF OFFICIAL RECORDS, PAGE, RECORDED FOR.